

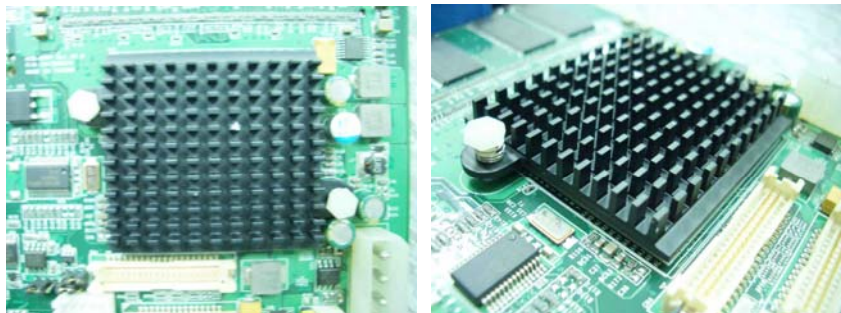
Test item list

| | |
|--|---|
| 1. <i>Test item list</i> ----- | 2 |
| 2. <i>Temp./humidity power on/off test</i> ----- | 3 |
| 3. <i>Temperature variation operation test</i> ----- | 4 |
| 4. <i>Cold start and hot start test</i> ----- | 5 |

Test Product: HSB-800P A0.2 + BP-205SP-P4-A10-C00

Sample Configuration & Quantity Under Test:

1. CPU Board: AAEON HSB-800P A0.2
2. CPU: AMD Geode LX800 / 500MHz (Bios Ver.0.2)
3. Chipset: AMD LX800 / AMD CS5536
4. VGA: AMD LX800
5. Memory: Onboard 256MB / SAMSUNG K4H511638F-LCCC
6. CFD: PQI 32MB
7. IDE HDD: Western Digital WD800BB / 80GB
8. Test Software: Windows XP / Run PassMark Burn In Test Pro 4.0
9. Backplane: BP-205SP-P4-A10-C00
10. ATX Power Supply: Seventeam ST-350EAG-05G
11. Heat Sink:



Temp./humidity power on/off test

Test Date: 08-26~27-2009

Test Site: AAEON QA Internal Lab.

Test Standard: Reference IEC 68-2-30 Testing procedures
Test Db: Damp Heat Test

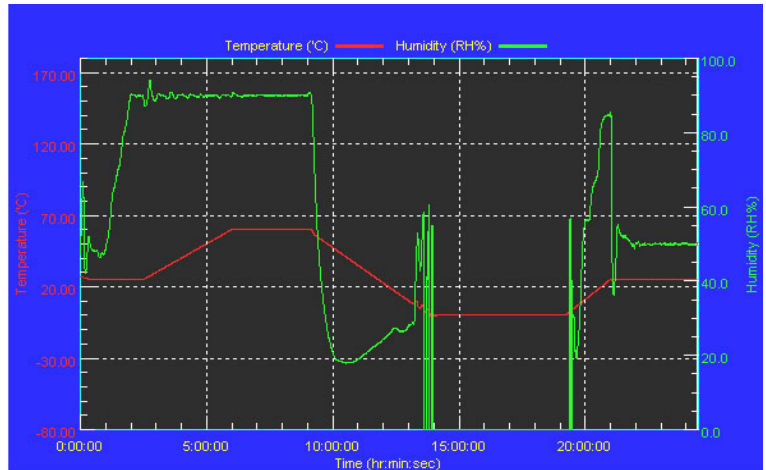
Test Equipment:
Programmable Temperature & Humidity Chamber
K.SON. INS. TECH. CORP.
Model: THS-D7S-100+1 N2
Date of Calibration: 12/13/08
Serial Number: 3898

Temperature & Humidity Power On/Off Test:

Testing Specification:

| Step | Temperature (°C) | Humidity (%RH) | Duration (HH:MM) |
|------|------------------|----------------|------------------|
| 1 | 25 | 50 | 00:30 |
| 2 | 25 | 50 | 00:30 |
| 3 | 25 | 90 | 01:00 |
| 4 | 25 | 90 | 00:30 |
| 5 | 60 | 90 | 03:30 |
| 6 | 60 | 90 | 03:00 |
| 7 | 0 | 0 | 04:50 |
| 8 | 0 | 0 | 05:23 |
| 9 | 25 | 50 | 01:47 |
| 10 | 25 | 50 | 03:00 |

Test Curve:



Test Result:

No problem was found during the temperature & humidity power on/off test.

Test Date: 08-28~29-2009

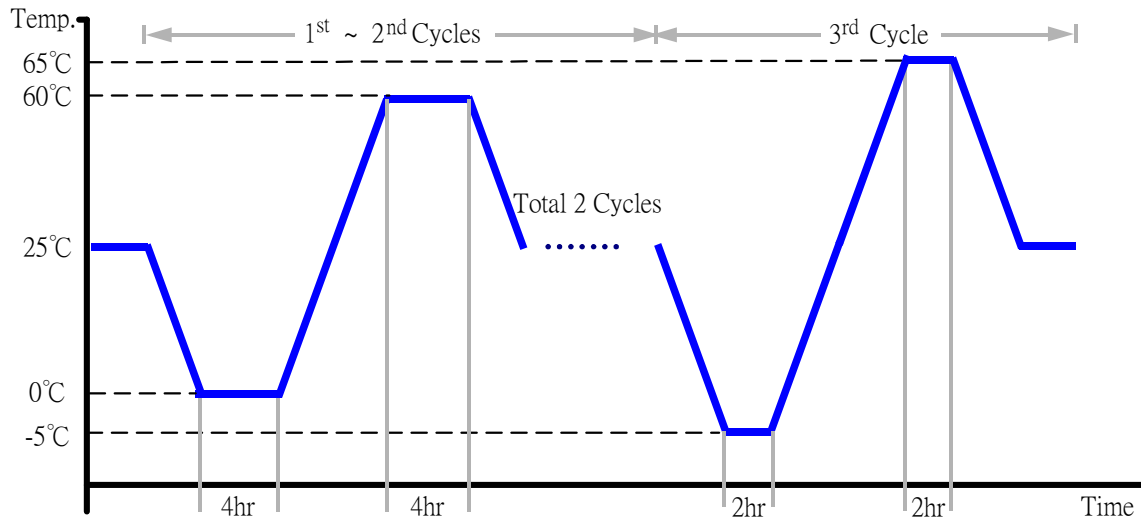
Test Site: AAEON QA Internal Lab.

Test Standard: Reference IEC 68-2-14 Testing procedures
Test N: Change of temperature Test

Test Equipment:
Programmable Temperature & Humidity Chamber
K.SON. INS. TECH. CORP.
Model: THS-D7S-100+1 N2
Date of Calibration: 12/13/08
Serial Number: 3898

Temperature & Humidity Cycle Test:

1. Test Low Temperature: 0°C (1~2 cycles)
-5°C (3rd cycle)
2. Test High Temperature: 60°C (1~2 cycles)
65°C (3rd cycle)
3. Test dwell time: 4Hrs (1~2 cycles)
2Hrs (3rd cycle)
4. Temperature slope: 2°C/min
5. Test cycle: 3 cycles
6. Test Environment Curve:



Test Result:

No problem was found during the temperature variation operation test.

Cold start and hot start test

Test Date: 08-28-2009

Test Site: AAEON QA Internal Lab.

Test Standard: Reference IEC 68-2-14 Testing procedures
Test N: Change of temperature Test

Test Equipment:
Programmable Temperature & Humidity Chamber
K.SON. INS. TECH. CORP.
Model: THS-D7S-100+1 N2
Date of Calibration: 12/13/08
Serial Number: 3898

Test Condition:



| Parameters | Description |
|------------|-------------|
| T1 | -5°C |
| T2 | 65°C |
| t1 | 1 hrs |
| t2 | 2 hrs |
| t4, t5 | 30 min |
| t, t3 | 2°C/min |
| n (Cycle) | 1 |

t,t3 = temprature slope
t, t1: Power Off
t2: Power on/off test 10 times (on 2 min / off 5min)
t3,t4: Run PassMark Burn In Test
t5: Win XP Software restart test 2 times
Test Software:Windows XP

Test Result:

- a. No problem was found during the cold start test.
- b. No problem was found during the hot start test.