



HSB-660I A0.1

Test Date: 10-09~14-2003

Test Product: HSB-660I ( PCB Rev:A0.1 BIOS Rev: 1.0)

Test Site: AAEON DV Internal Lab.

Performed By : Rex Chang

**Test Standard :** Reference IEC 68-2-30 Testing procedures  
 Test DB : Damp Heat Test  
 Reference IEC 68-2-61 Testing procedures  
 Test Z/ABD : Climatic Sequence Test

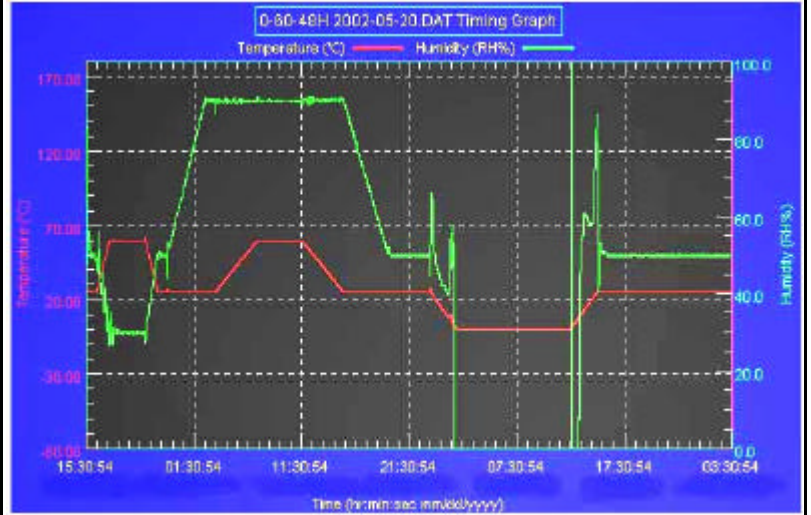
**Test Equipment:**  
 Programmable Temperature & Humidity Chamber  
 K.SON. INS. TECH. CORP.  
 Model : THS-A4C+-100  
 Date of Calibration : 06/23/03  
 Serial Number: 3188

### Temperature & Humidity Cycle Test:

#### Testing Specification

Step	Temperature ( )	Humidity (%RH)	Duration (HH:MM)
1	25	50	00:30
2	25	50	00:30
3	60	30	01:10
4	60	30	03:20
5	25	50	01:10
6	25	50	00:50
7	25	90	03:30
8	25	90	01:00
9	60	90	03:53
10	60	90	04:07
11	25	90	03:53
12	25	50	04:07
13	25	50	03:30
14	25	50	00:30
15	0	0	02:30
16	0	0	10:30
17	25	50	02:30
18	25	50	00:30

#### Test Curve:

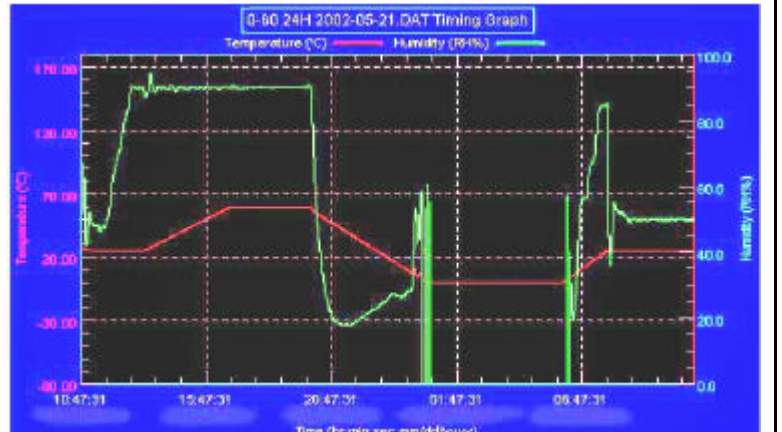


### Temperature & Humidity Power On/Off Test

#### Testing Specification:

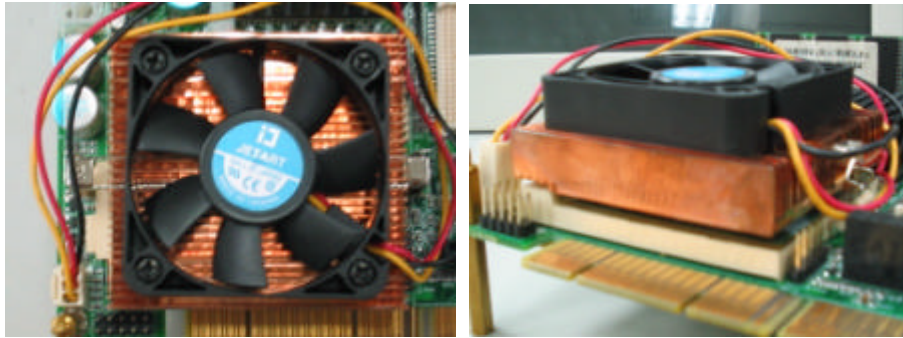
Step	Temperature ( )	Humidity (%RH)	Duration (HH:MM)
1	25	50	00:30
2	25	50	00:30
3	25	90	01:00
4	25	90	00:30
5	60	90	03:30
6	60	90	03:00
7	0	0	04:50
8	0	0	05:23
9	25	50	01:47
10	25	50	03:00

#### Test Curve:



**HSB-660I A0.1****Sample Configuration & Quantity Under Test:**

1. CPU : Intel Pentium 1.4GHz
2. SDRAM : 128MB SDRAM NEC D45128841G5-A75-9JF (PC-133)
3. Chipset : VIA VT8606 / VT82C686B
4. VGA : Onboard VIA VT8606 (Share memory up to 32MB)
5. CFD : SanDisk 32MB
6. Cooler :

**Test Result :****Passed.**

The HSB-660I rev:A0.1 Half-size CPU card meets temperature cycle test.