

HSB-525I

Ver.A0.2

Temperature/Humidity Test Report

Report NO: 11I020010

Summary	<p><input checked="" type="checkbox"/> Pass</p> <p><input type="checkbox"/> Fail</p> <p>Note : There is/are ____ defect(s) not list in the report, please check it in the DTS Website.</p> <p><input type="checkbox"/> Pass with Deviation</p> <p>Comment: _____</p>
---------	---

Issue date

2011-05-11

Approval

Jansin Lee

Test Engineer

Clement Chien

Test item list

-
1. *Test item list* ----- 2
 2. *Configuration of EUT* ----- 3
 3. *Temp./humidity power on/off test* ----- 4
 4. *Temperature variation operation test* ----- 5
 5. *Cold start and hot start test* ----- 6

Testing Result

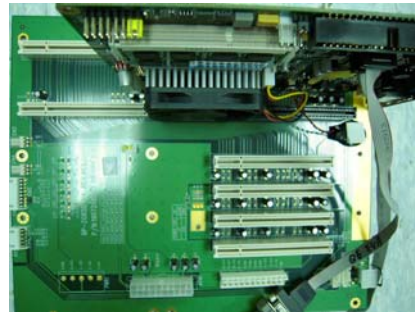
Num	Test item list	Result	Remark
1	Temp./humidity power on/off test	Pass	
2	Temperature variation operation test	Pass	
3	Cold start and hot start test	Pass	

Configuration of EUT

Test Product: HSB-525I A0.2 + BP-208SG-P4 A1.1

Sample Configuration & Quantity Under Test:

1. CPU: Intel Atom Dual Core D525 / 1.80GHz (Bios Ver. H525I 0.05X64)
2. Chipset: Intel Atom D525 / ICH8M
3. Memory: DSL DDR3 1066 2GB-CL7-ELPIDA J1108BDSE-DJ-F
4. SATA HDD: WD 3.5" SATA 80GB-WD800AAJS-00PSA0
5. Test Software: Windows XP / Run PassMark Burn In Test 6.0 Pro
6. Carrier board: BP-208SG-P4 REV.A1.1
7. Power Supply: ATX to AT power
8. CPU Cooler:



Temp./humidity power on/off test

Test Date: 05-10 ~ 11-2011

Test Site: AAEON QE Internal Lab.

Test Standard: Reference IEC 68-2-30 Testing procedures
Test Db: Damp Heat Test

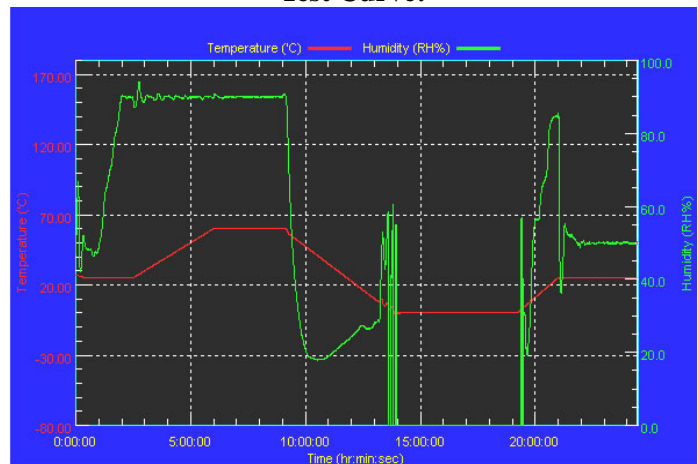
Test Equipment:
Programmable Temperature & Humidity Chamber
K.SON. INS. TECH. CORP.
Model: THS-B6T-150+LN2
Date of Calibration: 03/17/11
Serial Number: 6487KT

Temperature & Humidity Power On/Off Test:

Testing Specification:

Step	Temperature (°C)	Humidity (%RH)	Duration (HH:MM)
1	25	50	00:30
2	25	50	00:30
3	25	90	01:00
4	25	90	00:30
5	60	90	03:30
6	60	90	03:00
7	0	0	04:50
8	0	0	05:23
9	25	50	01:47
10	25	50	03:00

Test Curve:



Test Result:

Test Method	Actual	Successful	Failure rate
Power On/Off	1890/times	1890/times	0 %

Note: Failure rate need to under 0.2%.

Temperature variation operation test

Test Date: 05-09 ~ 10-2011

Test Site: AAEON QE Internal Lab.

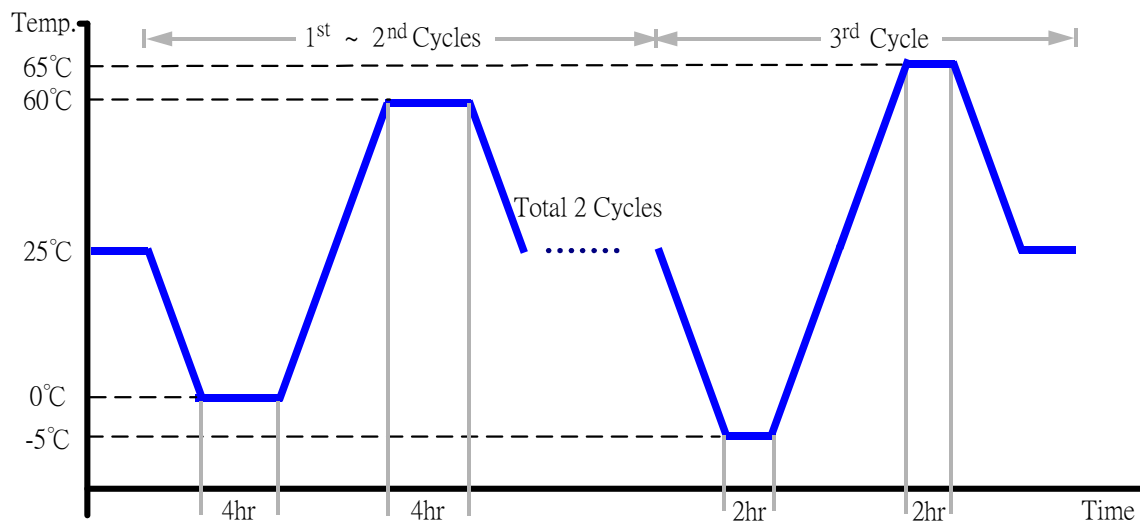
Test Standard: Reference IEC 68-2-14 Testing procedures
Test N: Change of temperature Test

Test Equipment:

Programmable Temperature & Humidity Chamber
K.SON. INS. TECH. CORP.
Model: THS-B6T-150+LN2
Date of Calibration: 03/17/11
Serial Number: 6487KT

Temperature & Humidity Cycle Test:

1. Test Low Temperature: 0°C (1~2 cycles)
-5°C (3rd cycle)
2. Test High Temperature: 60°C (1~2 cycles)
65°C (3rd cycle)
3. Test dwell time: 4Hrs (1~2 cycles)
2Hrs (3rd cycle)
4. Temperature slope: 2°C/min
5. Test cycle: 3 cycles
6. Test Environment Curve:



Test Result:

No problem was found during the temperature variation operation test.

Cold start and hot start test

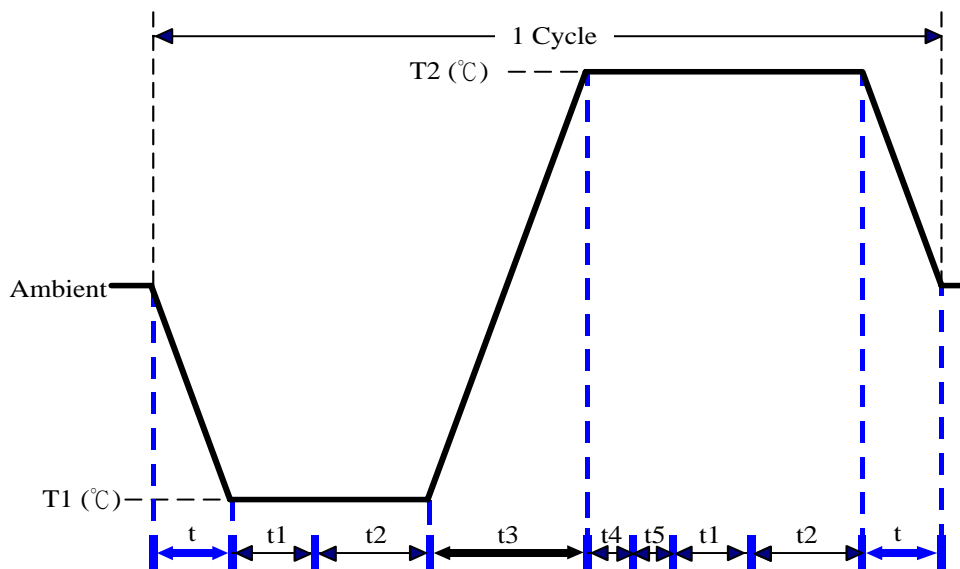
Test Date: 05-07 ~ 08-2011

Test Site: AAEON QE Internal Lab.

Test Standard: Reference IEC 68-2-14 Testing procedures
Test N: Change of temperature Test

Test Equipment:
Programmable Temperature & Humidity Chamber
K.SON. INS. TECH. CORP.
Model: THS-B6T-150+LN2
Date of Calibration: 03/17/11
Serial Number: 6487KT

Test Condition:



Parameters	Description
T1	-5°C
T2	65°C
t1	1 hrs
t2	2 hrs
t4, t5	30 min
t, t3	2°C/min
n (Cycle)	1

t,t3 = temprature slope
t, t1: Power Off
t2: Power on/off test 10 times (on 2 min / off 5min)
t3,t4: Run PassMark Burn In Test
t5: Win XP Software restart test 2 times
Test Software:Windows XP

Test Result:

- a. No problem was found during the cold start test.
- b. No problem was found during the hot start test.