



HSB-460I Rev:A0.2

Temperature cycle Test Report

Report NO : 03E020041

Issued by:

/

06/06/2003

Rex Chang
Test Engineer

Date

Reviewed by:

/

06/06/2003

Wayne-Chen
A.V.P.

Date

HSB-460I A0.2

Test Date: 06-3~6-2003

Test Product: HSB-460I (PCB Rev:A0.2 BIOS Rev: 0.4)

Test Site: AAEON DV Internal Lab.

Performed By : Rex Chang

Test Standard : Reference IEC 68-2-30 Testing procedures
 Test DB : Damp Heat Test
 Reference IEC 68-2-61 Testing procedures
 Test Z/ABD : Climatic Sequence Test

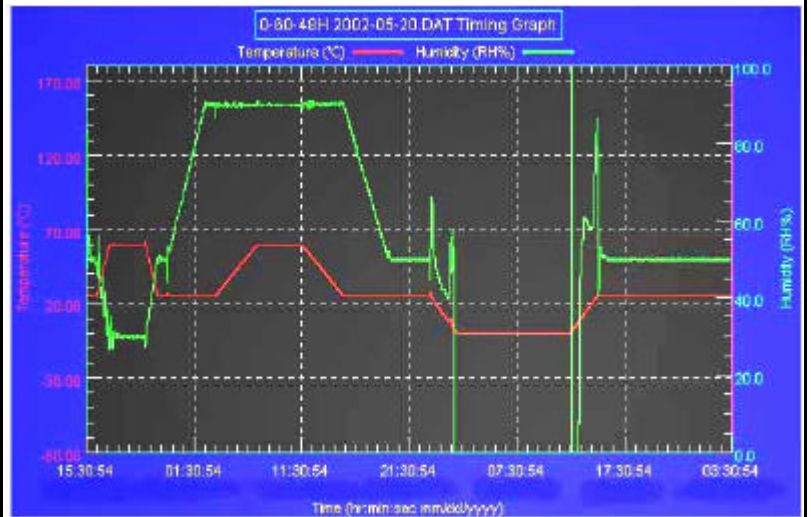
Test Equipment:
 Programmable Temperature & Humidity Chamber
 K.SON. INS. TECH. CORP.
 Model : THS-D4H+-100
 Date of Calibration : 06/03/03
 Serial Number: 1241

Temperature & Humidity Cycle Test:

Testing Specification

Step	Temperature ()	Humidity (%RH)	Duration (HH:MM)
1	25	50	00:30
2	25	50	00:30
3	60	30	01:10
4	60	30	03:20
5	25	50	01:10
6	25	50	00:50
7	25	90	03:30
8	25	90	01:00
9	60	90	03:53
10	60	90	04:07
11	25	90	03:53
12	25	50	04:07
13	25	50	03:30
14	25	50	00:30
15	0	0	02:30
16	0	0	10:30
17	25	50	02:30
18	25	50	00:30

Test Curve:

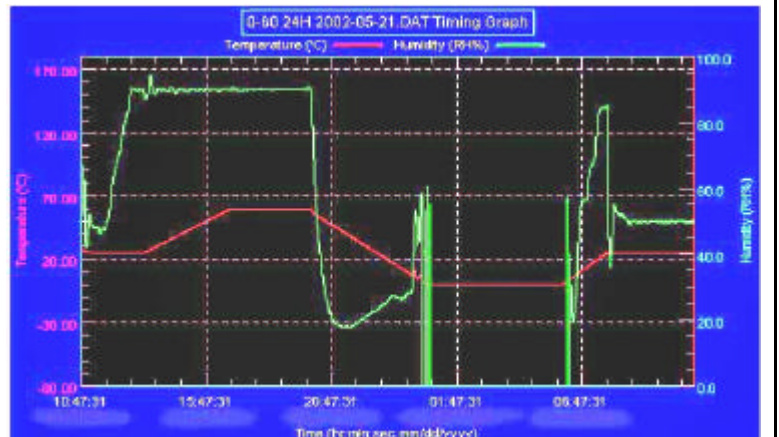


Temperature & Humidity Power On/Off Test

Testing Specification:

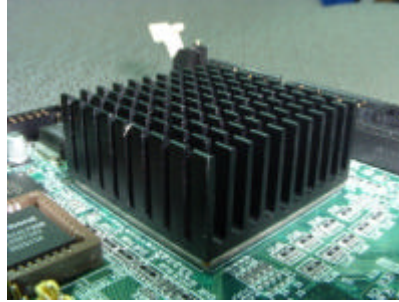
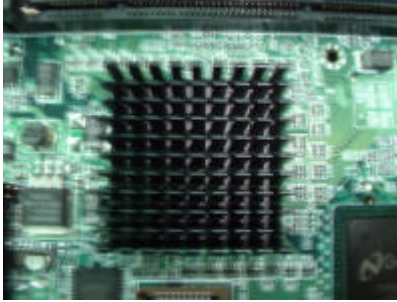
Step	Temperature ()	Humidity (%RH)	Duration (HH:MM)
1	25	50	00:30
2	25	50	00:30
3	25	90	01:00
4	25	90	00:30
5	60	90	03:30
6	60	90	03:00
7	0	0	04:50
8	0	0	05:23
9	25	50	01:47
10	25	50	03:00

Test Curve:



HSB-460I A0.2**Sample Configuration & Quantity Under Test:**

1. CPU : NS Geode GX1 300MHz
2. SDRAM : Onboard 64MB SDRAM SAMAUNG K4S281632D-TC75
3. VGA : Onboard CS5530A(share system memory up to 4 MB)
4. Heat Sink(P/N): 1963558000

**Test Result :****Passed.**

The HSB-460I rev:A0.2 Half-size CPU card meets temperature cycle test.