

# GENE-SKU7

## Temperature/Humidity Test Report

Report NO: 17E020002

Sum mary	<p><input type="checkbox"/> Pass</p> <p><input type="checkbox"/> Fail</p> <p>Note : There is/are ____ defect(s) not list in the report, please check it in the DTS Website.</p> <p><input checked="" type="checkbox"/> Pass with Deviation</p> <p>Comment: <u>1,Under PassMark Burn In Test 8.0 Pro, test Network set loading to 100% test failed (Error message shows “Timeout waiting for packet”) , but change to 99% test pass. Please refer to for PASSMARK SOFTWARE</u> <a href="http://www.passmark.com/forum/showthread.php?2931-How-to-test-burnin-test-with-Network">http://www.passmark.com/forum/showthread.php?2931-How-to-test-burnin-test-with-Network</a></p>
-------------	---

Issue date

QE Manager

Test Engineer

2017-05-04

KJ Wang

Rex Chang

# Test item list

- 
1. *Test item list* ----- 2
  2. *Configuration of EUT* ----- 3
  3. *Temp./humidity power on/off test* ----- 4
  4. *Temperature variation operation test* ----- 5
  5. *Cold start and hot start test* ----- 6

## Testing Result

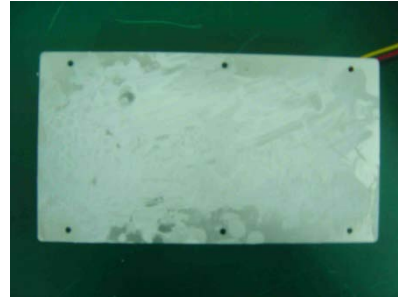
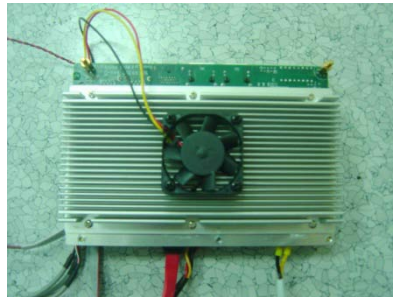
Num	Test item list	Result	Remark
1	Temp./humidity power on/off test	Pass	
2	Temperature variation operation test	Pass	
3	Cold start and hot start test	Pass	

# Configuration of EUT

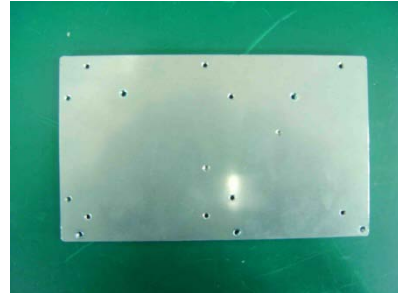
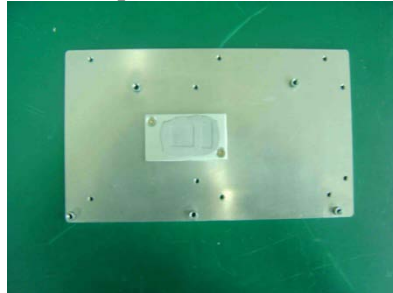
## Test Product: GENE-SKU7 A0.1

### Sample Configuration & Quantity Under Test:

1. CPU: Intel Core i7-6600U / 2.6GHz
2. BIOS Ver. ESB-D-TWITES R0.4 (EITEAM04) (03/30/2017)
3. Chipset: Intel Sky Lake-U SoC
4. Memory: Kingston 16GB / DDR4 2133 / Micron 6BA77 D9SRJ
5. 2.5" SATA HDD: Western Digital WD2500BEVT / 250GB
6. Test Software: Windows 10 / Run PassMark Burn In Test 8.1 Pro
7. AT Power Supply: Zippy HG2-6400P / 400W
8. Heat Sink + FAN:



9. Heat-Spreader + Thermal Pad:



# Temp./humidity power on/off test

**Test Date:** 05-02 ~ 03-2017

**Test Site:** AAEON QE Dept.

**Test Standard:** Refer to IEC 68-2-30 Testing procedures  
 Test Db: Damp Heat Test  
 Refer to IEC 68-2-1 Testing procedures  
 Test Ad: Cold Test

**Test Equipment:**

Programmable Temperature & Humidity Chamber: (K.SON. INS. TECH. CORP.)  
 Model: THS-B6T-150+LN2  
 Date of Calibration: 06/03/16  
 Due date of Calibration: 06/02/17  
 Serial Number: 9095KT

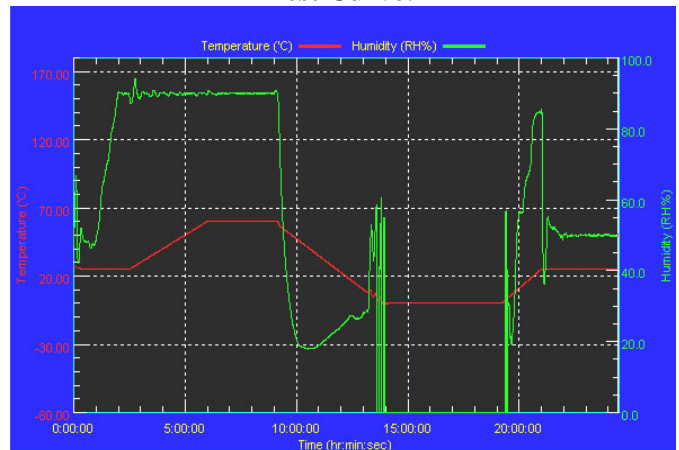
**Temperature & Humidity Power On/Off Test:**

1. Test High Temp./Humidity: 60°C @90% RH
2. Test Low Temperature: 0°C
3. Test Time: 24Hours / Cycle
4. Test Cycle: 1 Cycles
5. Test Software: DOS Mode / Run Boot Up Record Program ver 1.41

**Testing Specification:**

Step	Temperature (°C)	Humidity (%RH)	Duration (HH:MM)
1	25	50	00:30
2	25	50	00:30
3	25	90	01:00
4	25	90	00:30
5	60	90	03:30
6	60	90	03:00
7	0	0	04:50
8	0	0	05:23
9	25	50	01:47
10	25	50	03:00

**Test Curve:**



**Test Result:**

Test Method	Actual	Successful	Failure rate	Test Result
Power On/Off	2406/times	2406/times	0 %	Pass

**Note:** 1. Failure rate need to under 0%.  
 2. Power on/off fixture setting: on – 31sec / off - 5 sec

# Temperature variation operation test

**Test Date:** 05-03 ~ 04-2017

**Test Site:** AAEON QE Dept.

**Test Standard:** Refer to IEC 68-2-14 Testing procedures

Test N: Change of temperature Test

**Test Equipment:**

Programmable Temperature & Humidity Chamber: (K.SON. INS. TECH. CORP.)

Model: THS-B6T-150+LN2

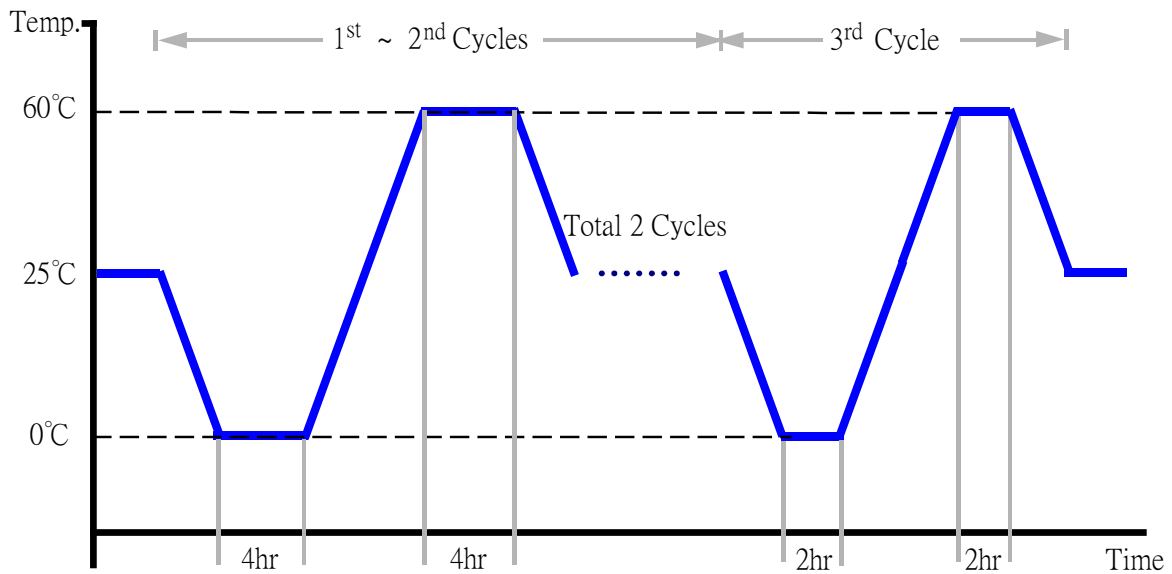
Date of Calibration: 06/03/16

Due date of Calibration: 06/02/17

Serial Number: 9095KT

**Temperature & Humidity Cycle Test:**

1. Test Low Temperature: 0°C (1~3 cycles)
2. Test High Temperature: 60°C (1~3 cycles)
3. Test dwell time: 4Hrs(1~2 cycles)  
2Hrs (3<sup>rd</sup>cycle)
4. Temperature slope: 2°C/min
5. Test cycle: 3 cycles
6. Test Environment Curve:



**Test Result:**

No issues were found during the temperature variation operation test.

# Cold start and hot start test

**Test Date:** 04-29 ~ 30-2017

**Test Site:** AAEON QE Dept.

**Test Standard:** Refer to IEC 68-2-14 Testing procedures

Test N: Change of temperature Test

**Test Equipment:**

Programmable Temperature & Humidity Chamber: (K.SON. INS. TECH. CORP.)

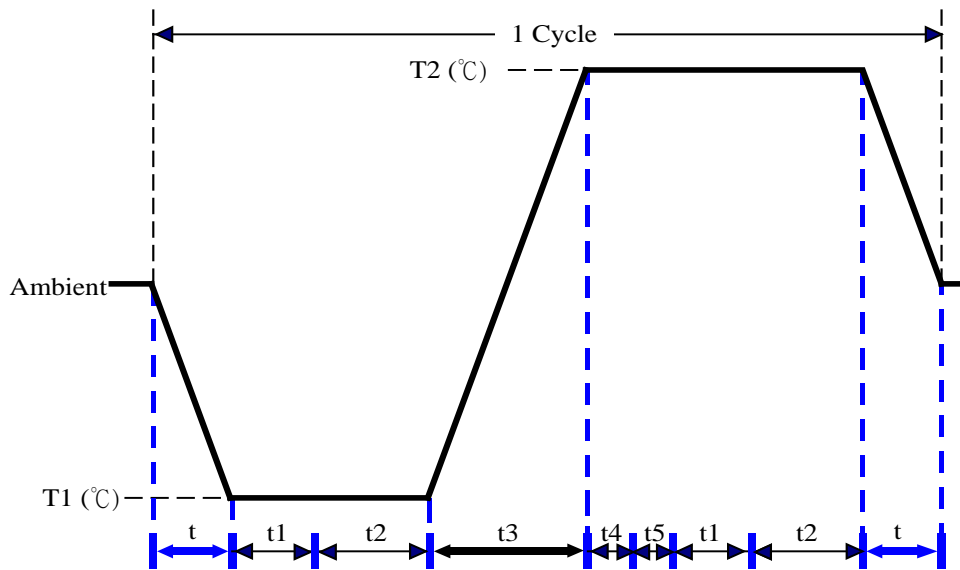
Model: THS-B6T-150+LN2

Date of Calibration: 06/03/16

Due date of Calibration: 06/02/17

Serial Number: 9095KT

**Test Condition:**



Parameters	Description
T1	0°C
T2	60°C
t1	1 hrs
t2	2 hrs
t4, t5	30 min
t, t3	2°C/min
n (Cycle)	1

t,t3 = temperature slope

t, t1: Power Off

t2: Power on/off test 10 times (on 2 min / off 5min)

t3,t4: Run PassMark Burn In Test

t5: Windows10 Software restart test 2 times

Test Software: Windows 10

**Test Result:**

- a. No issues were found during the cold start test.
- b. No issues were found during the hot start test.