

# GENE-QM57

## Temperature/Humidity Test Report

Report NO: 11E020026

Summary	<p><input type="checkbox"/> Pass</p> <p><input type="checkbox"/> Fail</p> <p>Note : There is/are ____ defect(s) not list in the report, please check it in the DTS Website.</p> <p><input checked="" type="checkbox"/> Pass with Deviation</p> <p>Comment: <u>Power on/off test function set 43 sec/time, but random shown on 38~47 sec/time.</u></p>
---------	---

Issue date

2011-06-21

Approval

Jansin Lee

Test Engineer

Rex Chang

# Test item list

- 
1. *Test item list* ----- 2
  2. *Configuration of EUT* ----- 3
  3. *Temp./humidity power on/off test* ----- 4
  4. *Temperature variation operation test* ----- 5
  5. *Cold start and hot start test* ----- 6

## Testing Result

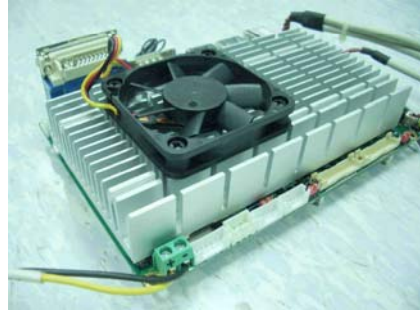
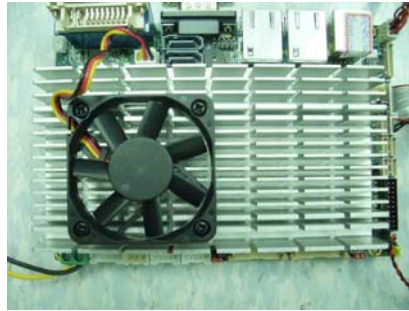
Num	Test item list	Result	Remark
1	Temp./humidity power on/off test	Pass	
2	Temperature variation operation test	Pass	
3	Cold start and hot start test	Pass	

# Configuration of EUT

## Test Product: GENE-QM57 A0.3

### Sample Configuration & Quantity Under Test:

1. CPU: Intel Core i7-620M / 2.66GHz (Bios Ver.GENE-QM57 1.0)
2. Chipset: Intel Arrandale / Ibex Peak M PCH (QM57)
3. VGA: Intel i7 integrated graphics core
4. Memory: ADATA 2GB / DDR3-1066 / Hynix H5TQ1G83BFR G7C
5. USB Flash: Transcend 4GB
6. SATA HDD: Seagate ST3160811AS / 160GB
7. Test Software: Windows XP / Run PassMark Burn In Test 6.0 Pro
8. AT Power Supply: Zippy SP2-4300F
9. CPU Cooler:



# Temp./humidity power on/off test

**Test Date:** 06-20~21-2011

**Test Site:** AAEON QE Internal Lab.

**Test Standard:** Reference IEC 68-2-30 Testing procedures  
Test Db: Damp Heat Test

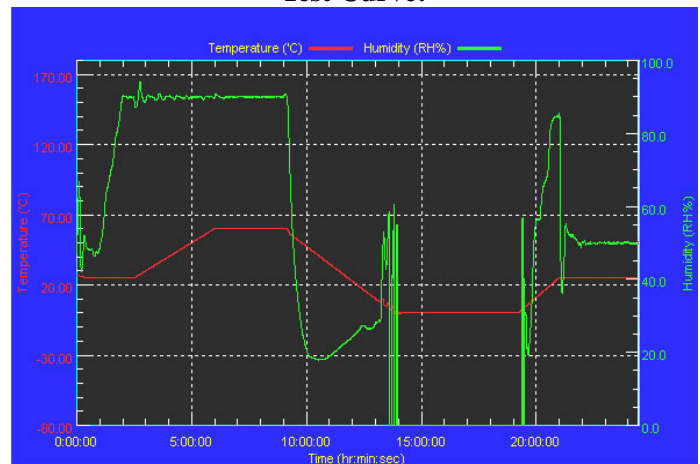
**Test Equipment:**  
Programmable Temperature & Humidity Chamber  
K.SON. INS. TECH. CORP.  
Model: THS-D4H+-100  
Date of Calibration: 11/03/10  
Serial Number: 2582

## Temperature & Humidity Power On/Off Test:

### Testing Specification:

Step	Temperature (°C)	Humidity (%RH)	Duration (HH:MM)
1	25	50	00:30
2	25	50	00:30
3	25	90	01:00
4	25	90	00:30
5	60	90	03:30
6	60	90	03:00
7	0	0	04:50
8	0	0	05:23
9	25	50	01:47
10	25	50	03:00

### Test Curve:



## Test Result:

Test Method	Actual	Successful	Failure rate
Power On/Off	2146/times	2146/times	0 %

Note: Failure rate need to under 0.2%.

# Temperature variation operation test

**Test Date:** 06-17~18-2011

**Test Site:** AAEON QE Internal Lab.

**Test Standard:** Reference IEC 68-2-14 Testing procedures  
Test N: Change of temperature Test

**Test Equipment:**

Programmable Temperature & Humidity Chamber  
K.SON. INS. TECH. CORP.

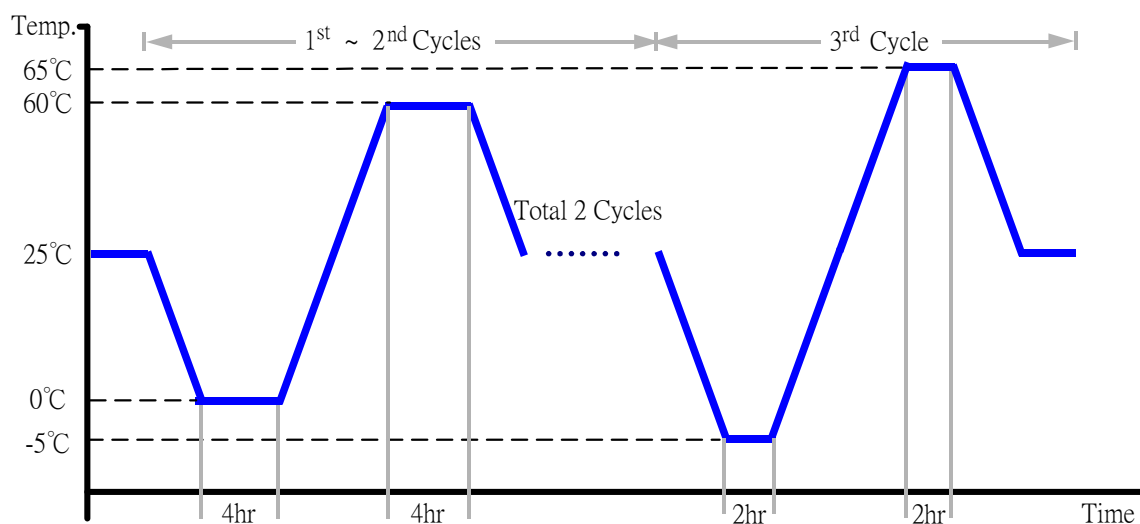
Model: THS-D4H+-100

Date of Calibration: 11/03/10

Serial Number: 2582

**Temperature & Humidity Cycle Test:**

1. Test Low Temperature: 0°C (1~2 cycles)  
-5°C (3<sup>rd</sup> cycle)
2. Test High Temperature: 60°C (1~2 cycles)  
65°C (3<sup>rd</sup> cycle)
3. Test dwell time: 4Hrs (1~2 cycles)  
2Hrs (3<sup>rd</sup> cycle)
4. Temperature slope: 2°C/min
5. Test cycle: 3 cycles
6. Test Environment Curve:



**Test Result:**

No problem was found during the temperature variation operation test.

# Cold start and hot start test

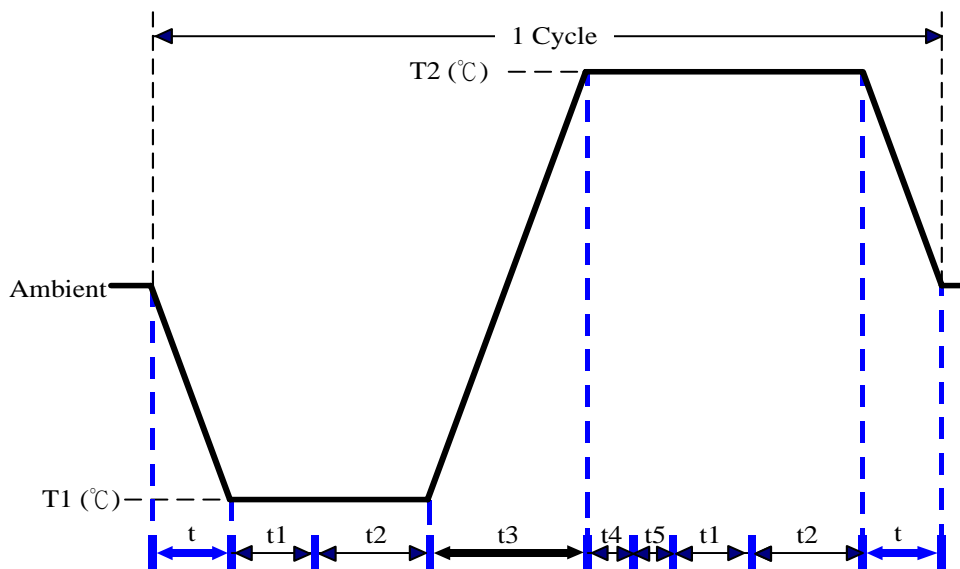
**Test Date:** 06-16~17-2011

**Test Site:** AAEON QE Internal Lab.

**Test Standard:** Reference IEC 68-2-14 Testing procedures  
Test N: Change of temperature Test

**Test Equipment:**  
Programmable Temperature & Humidity Chamber  
K.SON. INS. TECH. CORP.  
Model: THS-D4H+-100  
Date of Calibration: 11/03/10  
Serial Number: 2582

**Test Condition:**



Parameters	Description
T1	-5°C
T2	65°C
t1	1 hrs
t2	2 hrs
t4, t5	30 min
t, t3	2°C/min
n (Cycle)	1

t,t3 = temprature slope  
t, t1: Power Off  
t2: Power on/off test 10 times (on 2 min / off 5min)  
t3,t4: Run PassMark Burn In Test  
t5: Win XP Software restart test 2 times  
Test Software:Windows XP

**Test Result:**

- a. No problem was found during the cold start test.
- b. No problem was found during the hot start test.