

Test item list

1. <i>Test item list</i> -----	2
2. <i>Temp./humidity power on/off test</i> -----	3
3. <i>Temperature variation operation test</i> -----	4
4. <i>Cold start and hot start test</i> -----	5

Test Product: GENE-9655 A0.3

Sample Configuration & Quantity Under Test:

1. CPU: Intel Core 2 Duo T7500 / 2.2GHz (Bios Ver.0.4)
2. Chipset: Intel GM965 / ICH8M
3. VGA: Intel GM965
4. Memory: Transcend 2GB / SEC K4T1G084QQ(DDR2-667)
5. CFD: PQI 32MB
6. SATA HDD: Seagate ST380815AS / 80GB
7. Test Software: Windows XP / Run PassMark Burn In Test Pro 4.0
8. AT Power Supply: Zippy SP2-4300F
9. CPU Cooler:



Temp./humidity power on/off test

Test Date: 12-31-2009 ~ 01-01-2010

Test Site: AAEON QA Internal Lab.

Test Standard: Reference IEC 68-2-30 Testing procedures
Test Db: Damp Heat Test

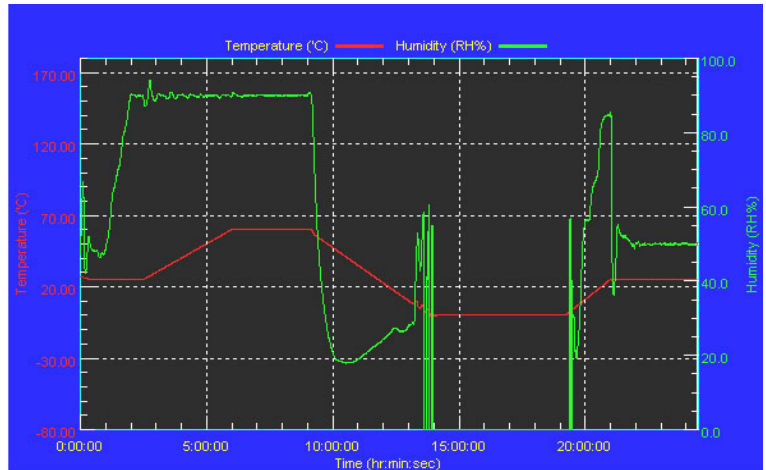
Test Equipment:
Programmable Temperature & Humidity Chamber
K.SON. INS. TECH. CORP.
Model: THS-B6T-150+LN2
Date of Calibration: 04/10/09
Serial Number: 6487KT

Temperature & Humidity Power On/Off Test:

Testing Specification:

Step	Temperature (°C)	Humidity (%RH)	Duration (HH:MM)
1	25	50	00:30
2	25	50	00:30
3	25	90	01:00
4	25	90	00:30
5	60	90	03:30
6	60	90	03:00
7	0	0	04:50
8	0	0	05:23
9	25	50	01:47
10	25	50	03:00

Test Curve:



Test Result:

No problem was found during the temperature & humidity power on/off test.

Test Method	Actual	Successful	Failure rate	On time	Off Time
Power On/Off	1317/times	1317/times	0 %	34 Sec.	34 Sec.

Test Date: 01-04~05-2010

Test Site: AAEON QA Internal Lab.

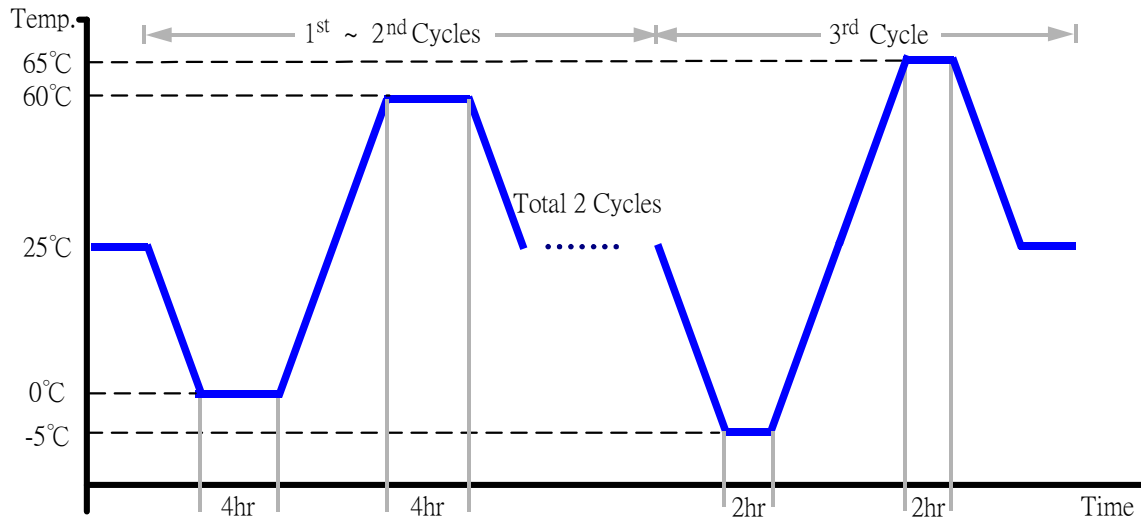
Test Standard: Reference IEC 68-2-14 Testing procedures
Test N: Change of temperature Test

Test Equipment:

Programmable Temperature & Humidity Chamber
K.SON. INS. TECH. CORP.
Model: THS-B6T-150+LN2
Date of Calibration: 04/10/09
Serial Number: 6487KT

Temperature & Humidity Cycle Test:

1. Test Low Temperature: 0°C (1~2 cycles)
-5°C (3rd cycle)
2. Test High Temperature: 60°C (1~2 cycles)
65°C (3rd cycle)
3. Test dwell time: 4Hrs (1~2 cycles)
2Hrs (3rd cycle)
4. Temperature slope: 2°C/min
5. Test cycle: 3 cycles
6. Test Environment Curve:



Test Result:

No problem was found during the temperature variation operation test.

Cold start and hot start test

Test Date: 01-05-2010

Test Site: AAEON QA Internal Lab.

Test Standard: Reference IEC 68-2-14 Testing procedures
Test N: Change of temperature Test

Test Equipment:
Programmable Temperature & Humidity Chamber
K.SON. INS. TECH. CORP.
Model: THS-B6T-150+LN2
Date of Calibration: 04/10/09
Serial Number: 6487KT

Test Condition:



Parameters	Description
T1	-5°C
T2	65°C
t1	1 hrs
t2	2 hrs
t4, t5	30 min
t, t3	2°C/min
n (Cycle)	1

t,t3 = temprature slope
t, t1: Power Off
t2: Power on/off test 10 times (on 2 min / off 5min)
t3,t4: Run PassMark Burn In Test
t5: Win XP Software restart test 2 times
Test Software:Windows XP

Test Result:

- a. No problem was found during the cold start test.
- b. No problem was found during the hot start test.