



Industrial Computing Platform Partner

GENE-9310

AT and ATX Power

Temperature cycle Test Report

Report NO: 07E020004

Issued by:

Rex Chang

/

01/29/2007

Test Engineer

Date

Reviewed by:

Wenyuan Yang

/

01/29/2007

Manager

Date

Temperature cycle test

Test Date: 01-25~29-2007

Test Product: GENE-9310 Rev: A0.2

Test Site: AAEON QA Internal Lab.

Performed By: Rex Chang

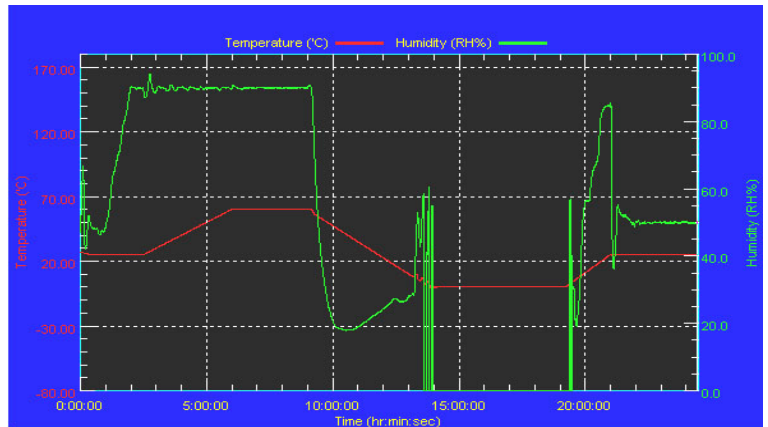
Test Standard: Reference IEC 68-2-30 Testing procedures
Test Db: Damp Heat Test
Reference IEC 68-2-61 Testing procedures
Test Z/ABD: Climatic Sequence Test

Test Equipment:
Programmable Temperature & Humidity Chamber
K.SON. INS. TECH. CORP.
Model: THS-A4C-100
Date of Calibration: 07/07/06
Serial Number: 3188

**Temperature & Humidity Power On/Off Test:
Testing Specification:**

Step	Temperature (°C)	Humidity (%RH)	Duration (HH:MM)
1	25	50	00:30
2	25	50	00:30
3	25	90	01:00
4	25	90	00:30
5	60	90	03:30
6	60	90	03:00
7	0	0	04:50
8	0	0	05:23
9	25	50	01:47
10	25	50	03:00

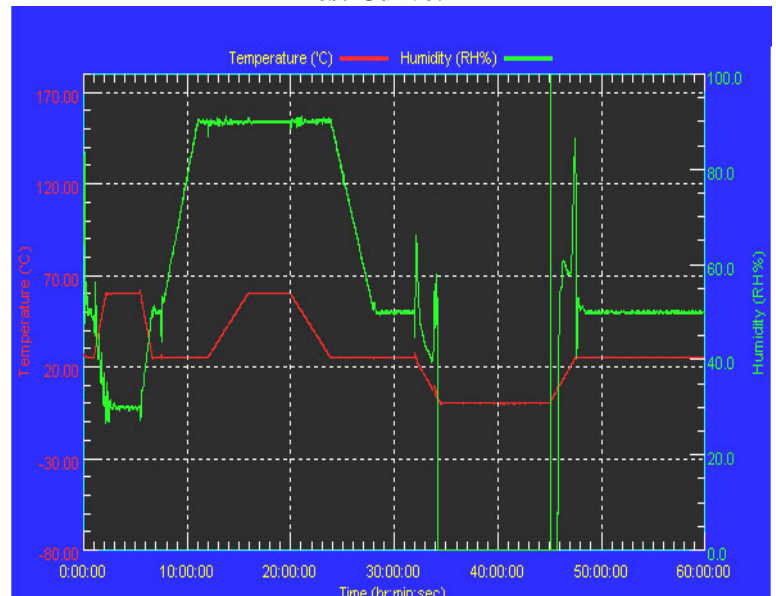
Test Curve:



**Temperature & Humidity Cycle Test:
Testing Specification**

Step	Temperature (°C)	Humidity (%RH)	Duration (HH:MM)
1	25	50	00:30
2	25	50	00:30
3	60	30	01:10
4	60	30	03:20
5	25	50	01:10
6	25	50	00:50
7	25	90	03:30
8	25	90	01:00
9	60	90	03:53
10	60	90	04:07
11	25	90	03:53
12	25	50	04:07
13	25	50	03:30
14	25	50	00:30
15	0	0	02:30
16	0	0	10:30
17	25	50	02:30
18	25	50	00:30

Test Curve:



Sample Configuration & Quantity Under Test:

Sample 1: AT Power

- a. CPU: Intel Celeron M (Yonah ICP-M) / 1.73GHz (Bios Ver.0.5)
- b. Memory: 512MB ELPIDA E5108AE-5C-E (DDR2)
- c. Chipset: Intel 945GM+ICH7-M
- d. VGA: Intel 945GM integrated VGA
- e. LAN: Intel 82573L
- f. Audio: Realtek ALC655 5.1CH AC97 CODEC
- g. CFD: PQI 32MB
- h. HDD: Seagate ST340014A 40GB
- i. AT Power Supply: Zippy SP2-4300F
- j. Cooler:



Sample 2: ATX Power

- a. CPU: Intel Celeron M (Yonah ICP-M) / 1.73GHz (Bios Ver.0.5)
- b. Memory: 512MB ELPIDA E5108AE-5C-E (DDR2)
- c. Chipset: Intel 945GM+ICH7-M
- d. VGA: Intel 945GM integrated VGA
- e. LAN: Intel 82573L
- f. Audio: Realtek ALC655 5.1CH AC97 CODEC
- g. CFD: PQI 32MB
- h. HDD: Seagate ST340014A 40GB
- i. ATX Power Supply: Zippy SP2-4300F
- j. Cooler:



Test Result:

Sample 1: AT Power

a. Temperature & Humidity Power On/Off Test:

No problem was found during the Temperature & Humidity Power On/Off Test.

b. Temperature & Humidity Cycle Test:

No problem was found during the Temperature & Humidity Cycle Test.

Sample 2: ATX Power

a. Temperature & Humidity Power On/Off Test:

No problem was found during the Temperature & Humidity Power On/Off Test.

b. Temperature & Humidity Cycle Test:

No problem was found during the Temperature & Humidity Cycle Test.