



**Test Date:** 08-23~26-2005

**Test Product:** GENE-6350 A1.1

**Test Site:** AAEON QA Internal Lab.

**Performed By:** Rex Chang

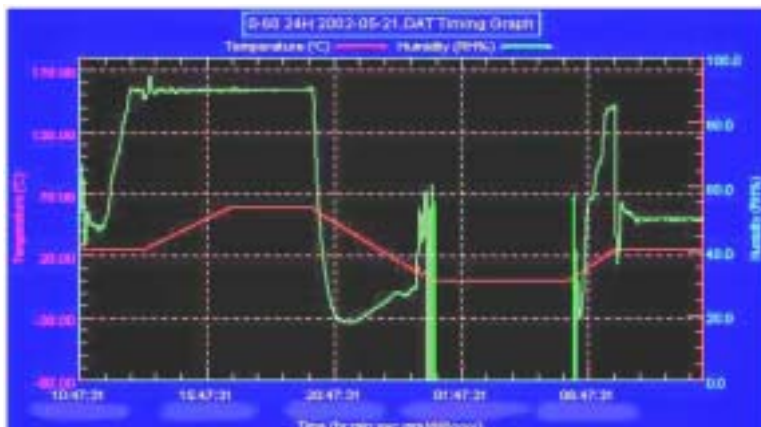
**Test Standard:** Reference IEC 68-2-30 Testing procedures  
 Test DB: Damp Heat Test  
 Reference IEC 68-2-61 Testing procedures  
 Test Z/ABD: Climatic Sequence Test

**Test Equipment:**  
 Programmable Temperature & Humidity Chamber  
 K.SON. INS. TECH. CORP.  
 Model: THS-D4H+-100  
 Date of Calibration: 05/23/05  
 Serial Number: 1241

**Temperature & Humidity Power On/Off Test:  
 Testing Specification:**

Step	Temperature ( )	Humidity (%RH)	Duration (HH:MM)
1	25	50	00:30
2	25	50	00:30
3	25	90	01:00
4	25	90	00:30
5	60	90	03:30
6	60	90	03:00
7	0	0	04:50
8	0	0	05:23
9	25	50	01:47
10	25	50	03:00

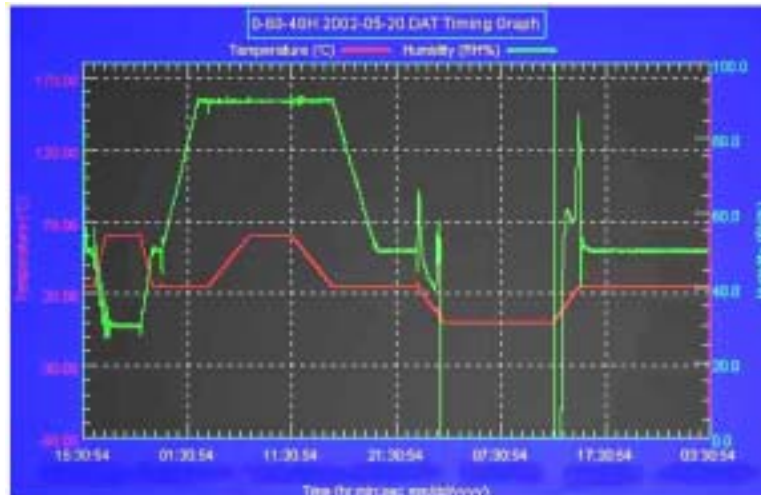
**Test Curve:**



**Temperature & Humidity Cycle Test:  
 Testing Specification**

Step	Temperature ( )	Humidity (%RH)	Duration (HH:MM)
1	25	50	00:30
2	25	50	00:30
3	60	30	01:10
4	60	30	03:20
5	25	50	01:10
6	25	50	00:50
7	25	90	03:30
8	25	90	01:00
9	60	90	03:53
10	60	90	04:07
11	25	90	03:53
12	25	50	04:07
13	25	50	03:30
14	25	50	00:30
15	0	0	02:30
16	0	0	10:30
17	25	50	02:30
18	25	50	00:30

**Test Curve:**



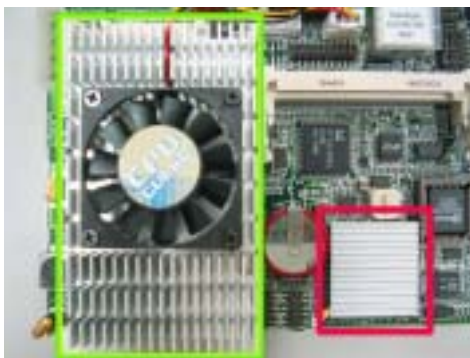
**Sample Configuration & Quantity Under Test:**  
**Temperature & Humidity Power On/Off Test:**

1. CPU: Intel Low Voltage Celeron 650MHz CPU (BIOS Rev: 1.2)
2. SDRAM: ELPIDA M2S56D40ATP 256MB(DDR-266)
3. Chipset: VIA CLE 266CE + VT8235CD + W83697UF + W83781D
4. VGA: VIA CLE 266 (share up to 64MB)
5. Ethernet: Realtek 8100BL.
6. CFD: PQI 32MB
7. AT Power: Enhance ENP-1815
8. Cooler:



**Temperature & Humidity Cycle Test:**

1. CPU: Intel Low Voltage Celeron 650MHz CPU (BIOS Rev: 1.2)
2. SDRAM: ELPIDA M2S56D40ATP 256MB(DDR-266)
3. Chipset: VIA CLE 266CE + VT8235CD + W83697UF + W83781D
4. VGA: VIA CLE 266 (share up to 64MB)
5. Ethernet: Realtek 8100BL.
6. HDD: Maxtor DiamondMax Plus 9 80GB ATA/133 HDD
7. Test Software: Windows 2000 / PassMark Burn In Test Pro 4.0
8. ATX Power: E-Safe LC-B300ATX
9. Cooler:



**Test Result:**

**Passed.**