



# Temperature cycle test

**Test Date:** 10-16~24-2006

**Test Product:** GENE-6315 Rev: A0.3

**Test Site:** AAEON QA Internal Lab.

**Performed By:** Rex Chang

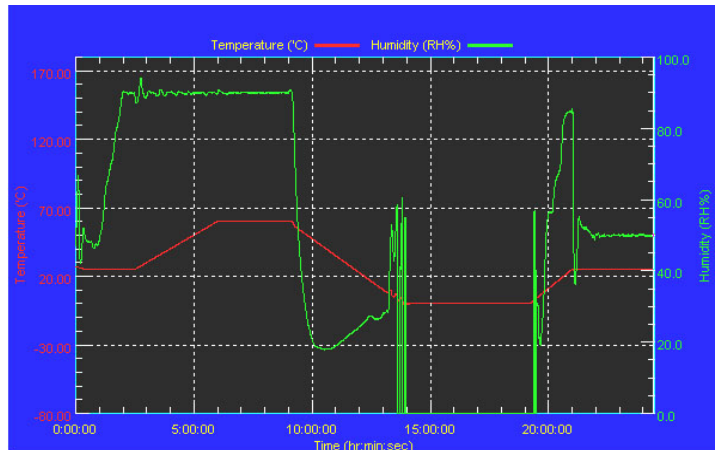
**Test Standard:** Reference IEC 68-2-30 Testing procedures  
Test DB: Damp Heat Test  
Reference IEC 68-2-61 Testing procedures  
Test Z/ABD: Climatic Sequence Test

**Test Equipment:**  
Programmable Temperature & Humidity Chamber  
K.SON. INS. TECH. CORP.  
Model: THS-D7S-100+1 N2  
Date of Calibration: 12/14/05  
Serial Number: 3898

**Temperature & Humidity Power On/Off Test:  
Testing Specification:**

Step	Temperature (°C)	Humidity (%RH)	Duration (HH:MM)
1	25	50	00:30
2	25	50	00:30
3	25	90	01:00
4	25	90	00:30
5	60	90	03:30
6	60	90	03:00
7	0	0	04:50
8	0	0	05:23
9	25	50	01:47
10	25	50	03:00

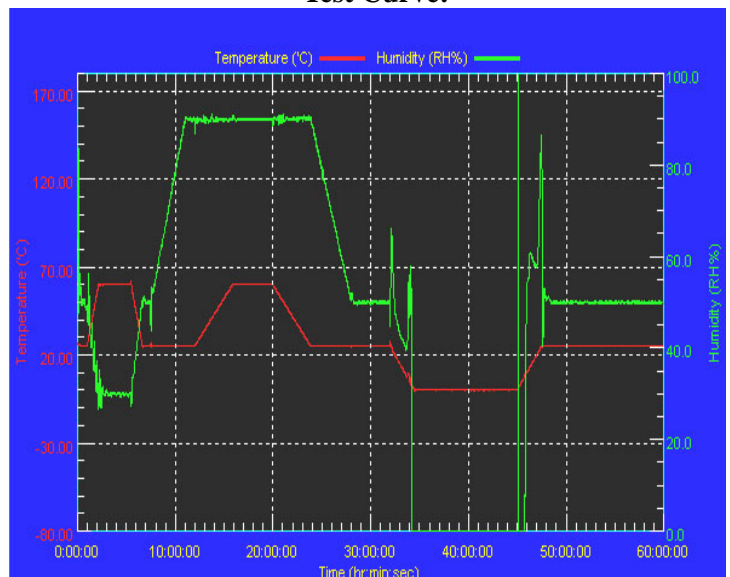
**Test Curve:**



**Temperature & Humidity Cycle Test:  
Testing Specification**

Step	Temperature (°C)	Humidity (%RH)	Duration (HH:MM)
1	25	50	00:30
2	25	50	00:30
3	60	30	01:10
4	60	30	03:20
5	25	50	01:10
6	25	50	00:50
7	25	90	03:30
8	25	90	01:00
9	60	90	03:53
10	60	90	04:07
11	25	90	03:53
12	25	50	04:07
13	25	50	03:30
14	25	50	00:30
15	0	0	02:30
16	0	0	10:30
17	25	50	02:30
18	25	50	00:30

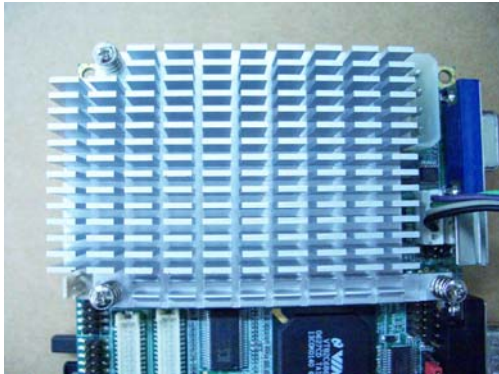
**Test Curve:**



## Sample Configuration & Quantity Under Test:

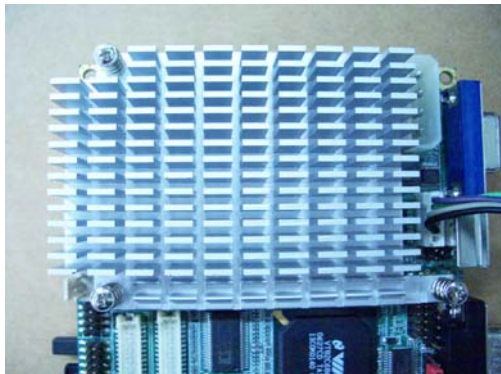
### Sample 1: (AT Power)

- a. CPU: VIA Mark 800MHz CPU (Bios Ver.0.C For Testing Only)
- b. Memory: 128MB Hynix HY57V561620CT-H (PC-100)
- c. Chipset: VIA82C686B
- d. VGA: Mark integrated VGA, share up to 32MB
- e. LAN: Realtek RTL 8100BL 10/100 Base-T Fast Ethernet
- f. CFD: PQI 32MB
- g. HDD: Maxtor Fireball 3 ATA/133 30GB
- h. Test Software: Windows XP / Run PassMark Burn In Test Pro 4.0
- i. AT Power Supply: EMACS SP2-4300F
- j. Heat Sink:



### Sample 2: (ATX Power)

- a. CPU: VIA Mark 800MHz CPU (Bios Ver.0.C For Testing Only)
- b. Memory: 512MB ELPIDA HB52RF648DC-75B (PC-133)
- c. Chipset: VIA82C686B
- d. VGA: Mark integrated VGA, share up to 32MB
- e. LAN: Realtek RTL 8100BL 10/100 Base-T Fast Ethernet
- f. CFD: M-System 8MB
- g. HDD: Maxtor Fireball 3 ATA/133 30GB
- h. Test Software: Windows XP / Run PassMark Burn In Test Pro 4.0
- i. ATX Power Supply: Enhance ENP-1815
- j. Heat Sink:



**Test Result:**

**Sample 1: (AT Power)**

**a. Temperature & Humidity Power On/Off Test:**

No problem was found during the Temperature & Humidity Power On/Off Test.

**b. Temperature & Humidity Cycle Test:**

No problem was found during the Temperature & Humidity Cycle Test.

**Sample 2: (ATX Power)**

**a. Temperature & Humidity Power On/Off Test:**

No problem was found during the Temperature & Humidity Power On/Off Test.

**b. Temperature & Humidity Cycle Test:**

No problem was found during the Temperature & Humidity Cycle Test.