



GENE-6310 rev:B0.1

Temperature cycle Test Report

Report NO : 03E020046

Issued by:

/

07/15/2003

Rex Chang
DV Engineer

Date

Reviewed by:

/

07/15/2003

Wayne-Chen
A.V.P

Date

GENE-6310 B0.1

Test Date: 07-10~14-2003

Test Product: GENE-6310 Rev : B0.1

Test Site: AAEON DV Internal Lab.

Performed By : Rex Chang

Test Standard : Reference IEC 68-2-30 Testing procedures
 Test DB : Damp Heat Test
 Reference IEC 68-2-61 Testing procedures
 Test Z/ABD : Climatic Sequence Test

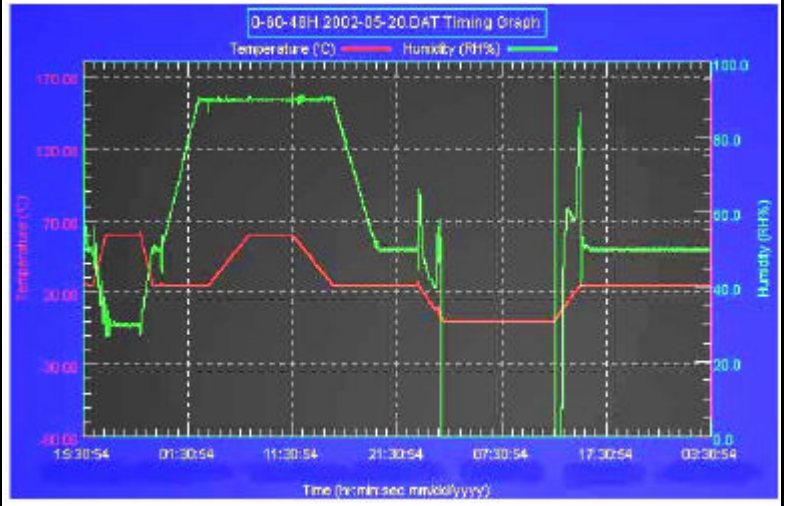
Test Equipment:
 Programmable Temperature & Humidity Chamber
 K.SON. INS. TECH. CORP.
 Model : THS-D4H+-100
 Date of Calibration : 06/03/03
 Serial Number: 1241

Temperature & Humidity Cycle Test:

Testing Specification

Step	Temperature ()	Humidity (%RH)	Duration (HH:MM)
1	25	50	00:30
2	25	50	00:30
3	60	30	01:10
4	60	30	03:20
5	25	50	01:10
6	25	50	00:50
7	25	90	03:30
8	25	90	01:00
9	60	90	03:53
10	60	90	04:07
11	25	90	03:53
12	25	50	04:07
13	25	50	03:30
14	25	50	00:30
15	0	0	02:30
16	0	0	10:30
17	25	50	02:30
18	25	50	00:30

Test Curve:

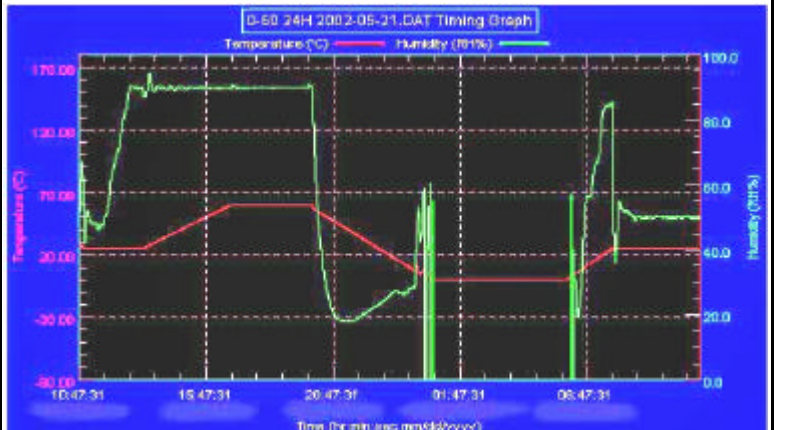


Temperature & Humidity Power On/Off Test

Testing Specification:

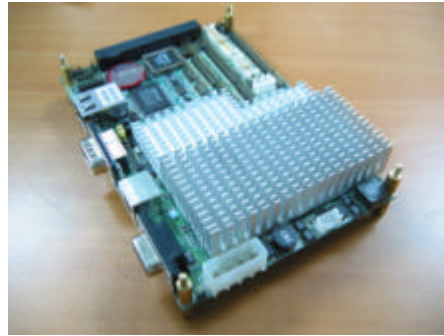
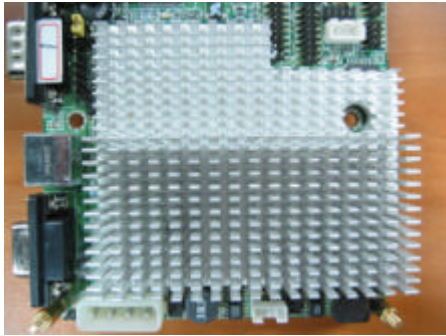
Step	Temperature ()	Humidity (%RH)	Duration (HH:MM)
1	25	50	00:30
2	25	50	00:30
3	25	90	01:00
4	25	90	00:30
5	60	90	03:30
6	60	90	03:00
7	0	0	04:50
8	0	0	05:23
9	25	50	01:47
10	25	50	03:00

Test Curve:



Sample Configuration & Quantity Under Test:**Quantity : 1**

1. CPU : Onboard VIA C3 Eden EBGA Mobile CPU 667MHz (Bios Ver.B0.1)
2. SDRAM : ELPIDA D45128163G5-A75-9JF 128MB SDRAM(PC-133)
3. VGA : North Bridge VT8606 (Share memory up to 32MB)
4. LAN : Realtek RTL 8100, 10/100MB Fast Ethernet
5. Compact Flash : SanDisk 32MB
6. Heat sink (P/N) : M166310020

**Test Result :****Passed.**

The GENE-6310 B0.1 Sub Compact Board meets temperature cycle test.



GENE-6310 rev:B0.1

CPU : VIA 733MHz

Temperature cycle Test Report

Report NO : 03E020047

Issued by:

/

07/21/2003

Rex Chang
DV Engineer

Date

Reviewed by:

/

07/21/2003

Wayne-Chen
A.V.P

Date

GENE-6310(733MHZ CPU) B0.1

Test Date: 07-16~21-2003

Test Product: GENE-6310 (733MHZ CPU) Rev : B0.1

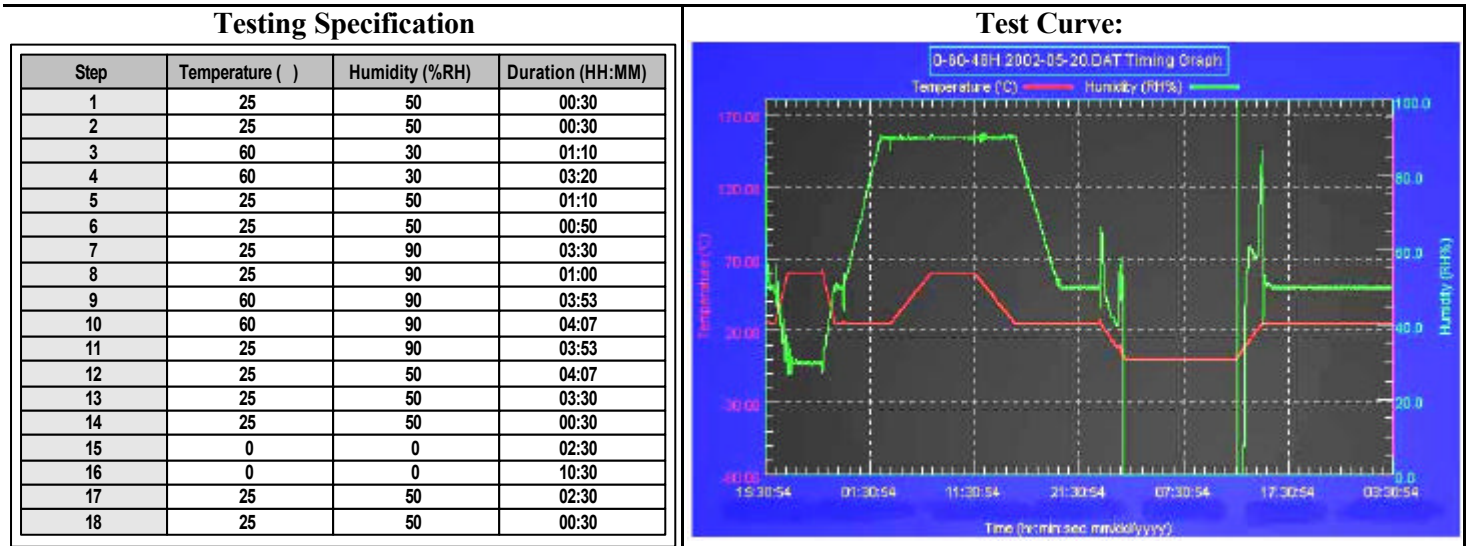
Test Site: AAEON DV Internal Lab.

Performed By : Rex Chang

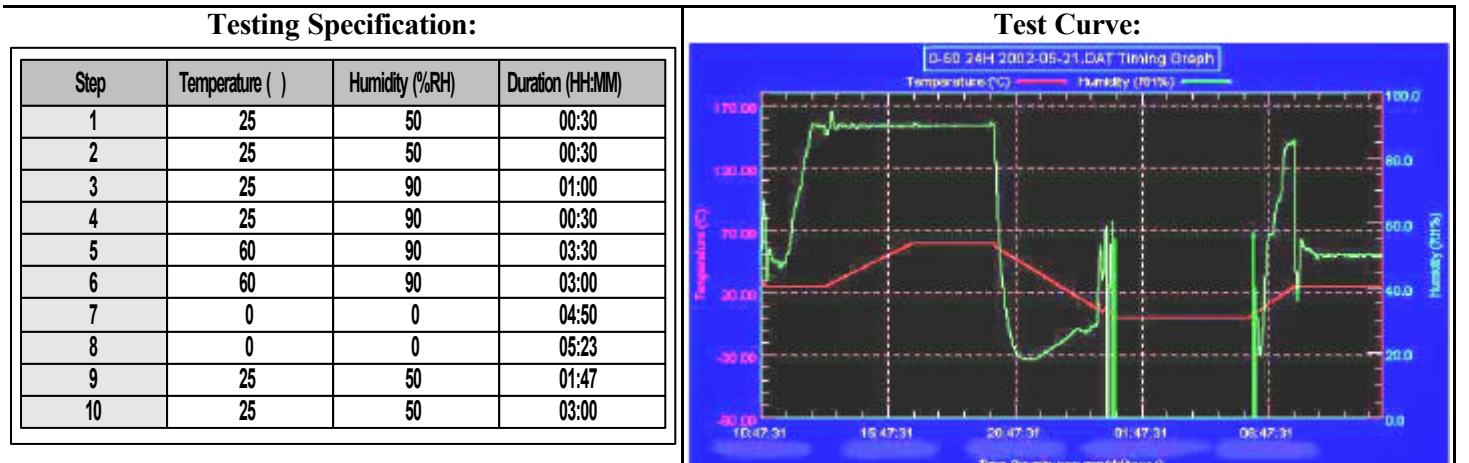
Test Standard : Reference IEC 68-2-30 Testing procedures
 Test DB : Damp Heat Test
 Reference IEC 68-2-61 Testing procedures
 Test Z/ABD : Climatic Sequence Test

Test Equipment:
 Programmable Temperature & Humidity Chamber
 K.SON. INS. TECH. CORP.
 Model : THS-D4H+-100
 Date of Calibration : 06/03/03
 Serial Number: 1241

Temperature & Humidity Cycle Test:

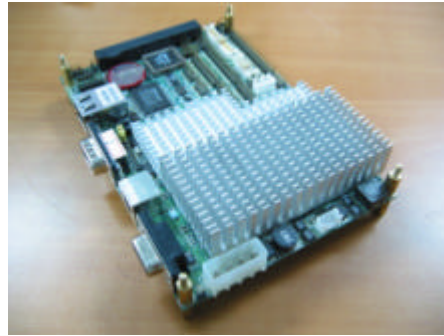
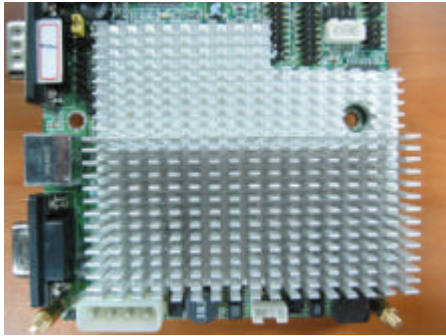


Temperature & Humidity Power On/Off Test



Sample Configuration & Quantity Under Test:**Quantity : 1**

1. CPU : Onboard VIA C3 Eden EPGA Mobile CPU 733MHz (Bios Ver.B0.1)
2. SDRAM : ELPIDA D45128163G5-A75-9JF 128MB SDRAM(PC-133)
3. VGA : North Bridge VT8606 (Share memory up to 32MB)
4. LAN : Realtek RTL 8100, 10/100MB Fast Ethernet
5. Compact Flash : SanDisk 32MB
6. Heat sink (P/N) : M166310020

**Test Result :****Passed.**

The GENE-6310 (733MHz CPU) B0.1 Sub Compact Board meets temperature cycle test.