



Industrial Computing Platform Partner

GENE-5315

ATX Power

Temperature cycle Test Report

Report NO: 06E020042

Issued by:

Rex Chang /

09/14/2006

Test Engineer

Date

Reviewed by:

Wenyuan Yang /

09/14/2006

Manager

Date

Temperature cycle test

Test Date: 09-08~14-2006

Test Product: GENE-5315 (ATX Power) Rev: A0.1

Test Site: AAEON QA Internal Lab.

Performed By: Rex Chang

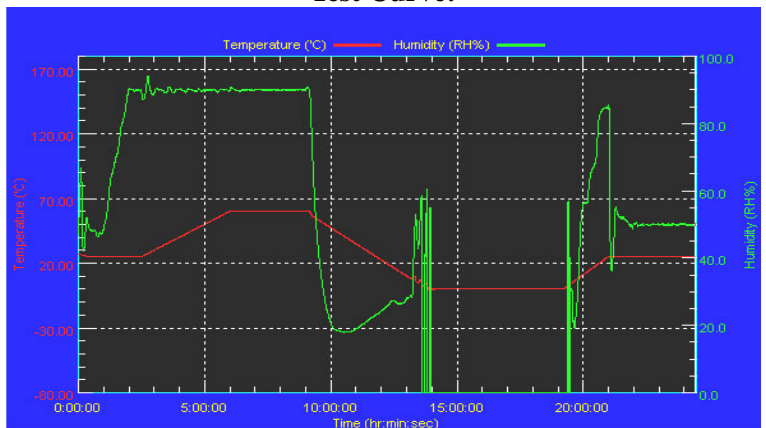
Test Standard: Reference IEC 68-2-30 Testing procedures
 Test DB: Damp Heat Test
 Reference IEC 68-2-61 Testing procedures
 Test Z/ABD: Climatic Sequence Test

Test Equipment:
 Programmable Temperature & Humidity Chamber
 K.SON. INS. TECH. CORP.
 Model: THS-D7S-100+1 N2
 Date of Calibration: 12/14/05
 Serial Number: 3898

**Temperature & Humidity Power On/Off Test:
 Testing Specification:**

Step	Temperature (°C)	Humidity (%RH)	Duration (HH:MM)
1	25	50	00:30
2	25	50	00:30
3	25	90	01:00
4	25	90	00:30
5	60	90	03:30
6	60	90	03:00
7	0	0	04:50
8	0	0	05:23
9	25	50	01:47
10	25	50	03:00

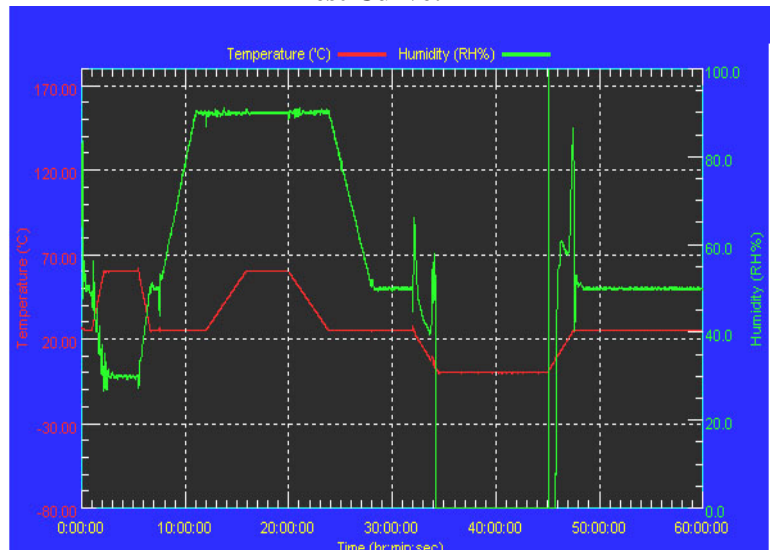
Test Curve:



**Temperature & Humidity Cycle Test:
 Testing Specification**

Step	Temperature (°C)	Humidity (%RH)	Duration (HH:MM)
1	25	50	00:30
2	25	50	00:30
3	60	30	01:10
4	60	30	03:20
5	25	50	01:10
6	25	50	00:50
7	25	90	03:30
8	25	90	01:00
9	60	90	03:53
10	60	90	04:07
11	25	90	03:53
12	25	50	04:07
13	25	50	03:30
14	25	50	00:30
15	0	0	02:30
16	0	0	10:30
17	25	50	02:30
18	25	50	00:30

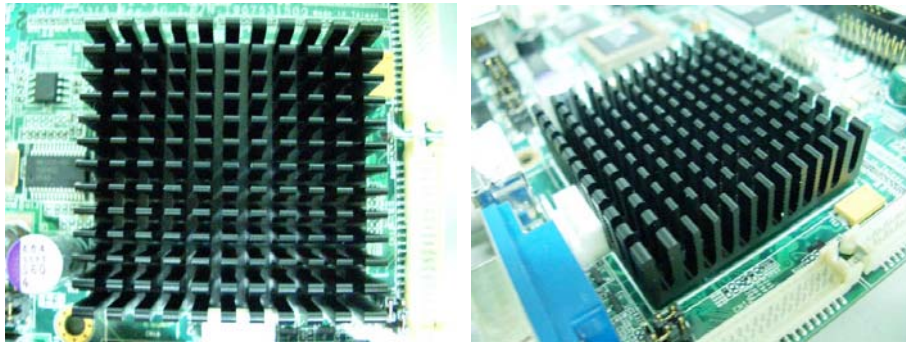
Test Curve:



Sample Configuration & Quantity Under Test:

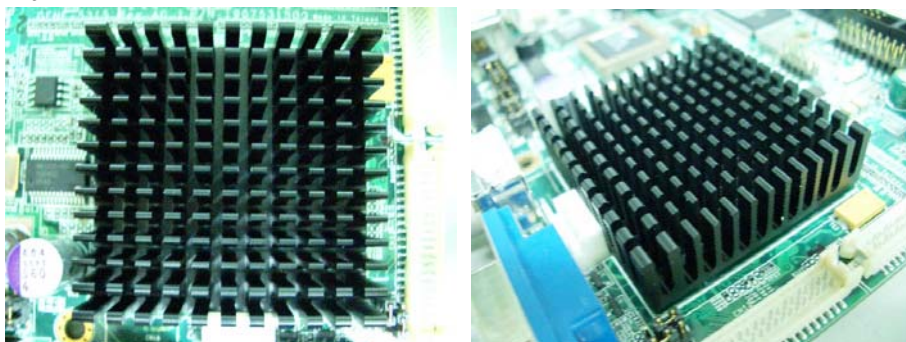
Sample 1:

- a. CPU: AMD Geode LX 700 (433MHz) on board (Bios Ver.0.3)
- b. Memory: Kingston 256MB / NANYA NT5DS16M16CT-6K (DDR333 SODIMM)
- c. Chipset: AMD LX series + CS5536
- d. VGA: AMD Geode LX 700 integrated graphic
- e. LAN: Realtek RTL8100BL, 10/100Mbps
- f. CFD: SanDisk 32MB
- g. HDD: Western Digital WD800BB-00JHA0 80GB
- h. Test Software: Windows XP / Run PassMark Burn In Test Pro 4.0
- i. ATX Power Supply: Zippy AX2-5300FB-25
- j. Heat Sink:



Sample 2:

- a. CPU: AMD Geode LX 800 (500 MHz) on board (Bios Ver.0.3)
- b. Memory: ELPIDA 256MB / ELPIDA DD2516AKTA-6B(DDR333 SODIMM)
- c. Chipset: AMD LX series + CS5536
- d. VGA: AMD Geode LX 800 integrated graphic
- e. LAN: Realtek RTL8100BL, 10/100Mbps
- f. CFD: SanDisk 32MB
- g. HDD: Western Digital WD800BB-00JHA0 80GB
- h. Test Software: Windows XP / Run PassMark Burn In Test Pro 4.0
- i. ATX Power Supply: FSP ATX-300PA
- j. Heat Sink:



Test Result:

Sample 1:

- a. **Temperature & Humidity Power On/Off Test:**
No problem was found during the Temperature & Humidity Power On/Off Test.
- b. **Temperature & Humidity Cycle Test:**
No problem was found during the Temperature & Humidity Cycle Test.

Sample 2:

- a. **Temperature & Humidity Power On/Off Test:**
No problem was found during the Temperature & Humidity Power On/Off Test.
- b. **Temperature & Humidity Cycle Test:**
No problem was found during the Temperature & Humidity Cycle Test.