

1. Test Item List -----	2
2. Test Configuration -----	3
2. Power On/Off Test -----	4
3. Cold Start and Hot Start Test -----	5
3. Low Temperature Operation Test -----	6
4. High Temp./Humidity Operation Test -----	7
5. Variation Temperature Operation Test -----	8

Test Configuration

Sample 1 (S/N: 08021192)

Num	Item	Spec
1.	SubCompact Board:	GENE-5315 Rev: B1.0 (BIOS: 0.6)
	1.CPU	Onboard AMD Geode LX800 / 500MHz
	2. Industrial Memory	Unigen 512MB / ProMOS V58C2512164SAI5I (DDR400)
2.	Industrial CFD	ATP 4GB
3.	Power Supply	Zippy SP2-4300F (AT Power)

Sample 2 (S/N: 08021195)

Num	Item	Spec
1.	SubCompact Board:	GENE-5315 Rev: B1.0 (BIOS: 0.6)
	1.CPU	Onboard AMD Geode LX800 / 500MHz
	2. Industrial Memory	Unigen 512MB / ProMOS V58C2512164SAI5I (DDR400)
2.	Industrial CFD	ATP 4GB
3.	Power Supply	Zippy SP2-4300F (AT Power)

Sample 3 (S/N: 08021203)

Num	Item	Spec
1.	SubCompact Board:	GENE-5315 Rev: B1.0 (BIOS: 0.6)
	1.CPU	Onboard AMD Geode LX800 / 500MHz
	2. Industrial Memory	Unigen 512MB / ProMOS V58C2512164SAI5I (DDR400)
2.	Industrial CFD	ATP 4GB
3.	Power Supply	Zippy SP2-4300F (AT Power)

Sample 4 (S/N: 08161095)

Num	Item	Spec
1.	SubCompact Board:	GENE-5315 Rev: B1.0 (BIOS: 0.6)
	1.CPU	Onboard AMD Geode LX800 / 500MHz
	2. Industrial Memory	Unigen 512MB / ProMOS V58C2512164SAI5I (DDR400)
2.	Industrial CFD	ATP 4GB
3.	Power Supply	Zippy SP2-4300F (AT Power)

Test Date: 10-23~24-2008

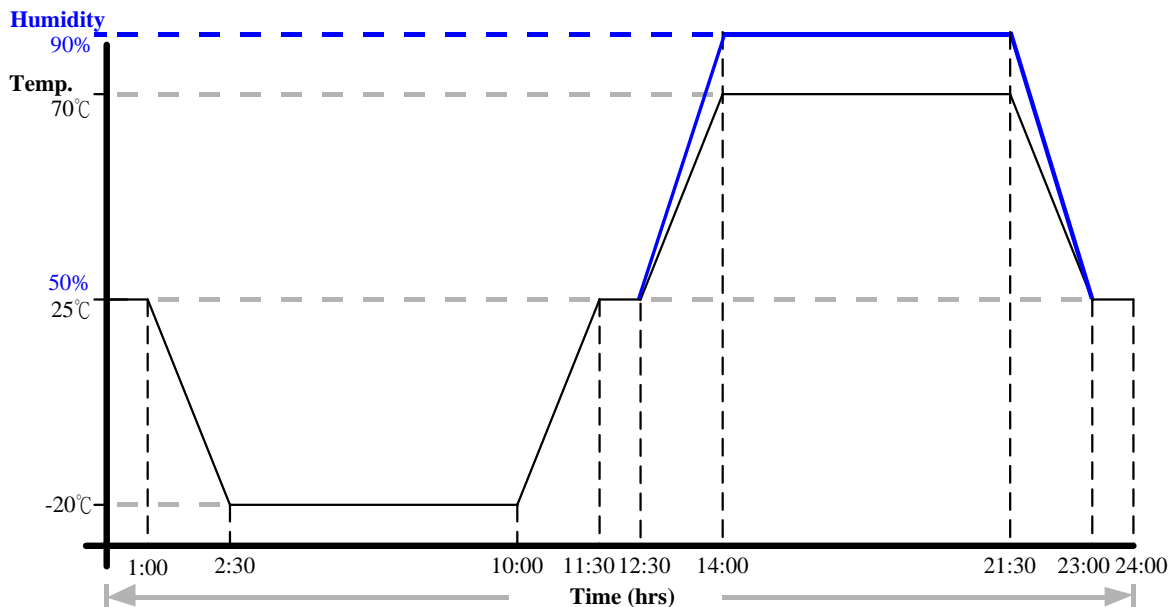
Test Site: AAEON QA Internal Lab.

Test Standard: Reference IEC 68-2-1 Testing procedures
Test Ad: Cold Test
Reference IEC 68-2-3 Testing procedures
Test Ca: Damp Heat steady state Test

Test Equipment:
Programmable Temperature & Humidity Chamber
K.SON. INS. TECH. CORP.
Model: THS-B6T-150+LN2
Date of Calibration: 04/17/08
Serial Number: 6488KT

Test Condition:

1. Test Low Temperature: -20°C
2. Test High Temp./ Humidity: 70°C/ 90%RH
3. Test Times: 24 hrs
4. Power On/Off Time: 40sec / 5sec
4. Test Software: DOS Mode / Boot Up Record Program ver 1.41
5. Test Environment Curve:



Sample Configuration & Quantity Under Test:

Quantity: 4

Test Result:

No problem was found during the temp./humidity power on/off test report.

Cold start and hot start test

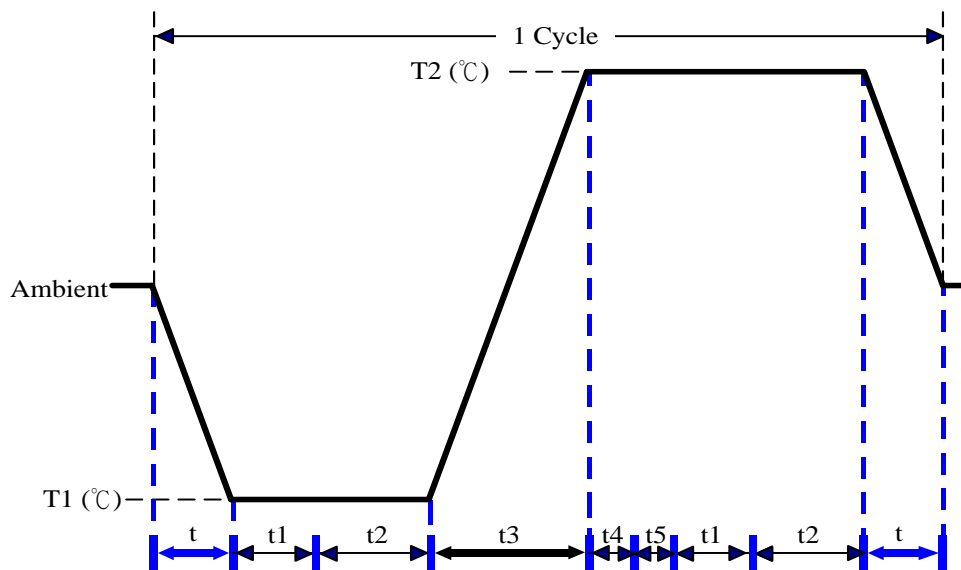
Test Date: 10-22~23-2008

Test Site: AAEON QA Internal Lab.

Test Standard: Reference IEC 68-2-14 Testing procedures
Test N: Change of temperature Test

Test Equipment:
Programmable Temperature & Humidity Chamber
K.SON. INS. TECH. CORP.
Model: THS-B6T-150+LN2
Date of Calibration: 04/17/08
Serial Number: 6488KT

Test Condition:



Parameters	Description
T1	-25°C
T2	75°C
t1	1 hrs
t2	2 hrs
t4, t5	30 min
t, t3	2°C/min
n (Cycle)	1

t,t3 = temprature slope
t, t1: Power Off
t2: Power on/off test 10 times (on 2 min / off 5min)
t3,t4: Run PassMark Burn In Test
t5: Win XP Software restart test 2 times
Test Software:Windows XP

Test Result:

- a. No problem was found during the cold start test.
- b. No problem was found during the hot start test.

Test Date: 10-21~22-2008

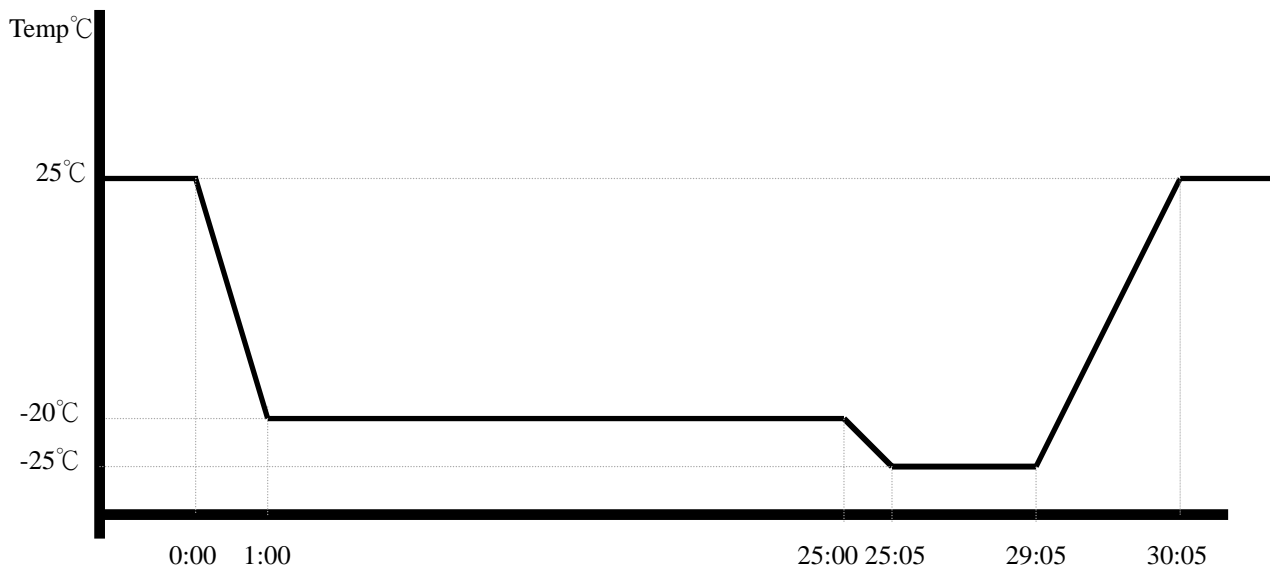
Test Site: AAEON QA Internal Lab.

Test Standard: Reference IEC 68-2-1 Testing procedures
Test Ad: Cold Test

Test Equipment:
Programmable Temperature & Humidity Chamber
K.SON. INS. TECH. CORP.
Model: THS-B6T-150+LN2
Date of Calibration: 04/17/08
Serial Number: 6488KT

Test Condition:

1. Test Temperature: -20°C, -25°C
2. Test Times: -20°C/24Hrs; -25°C/4Hrs
3. Test Software: Windows XP / Run PassMark Burn In Test 4.0 Pro
4. Test Environment Curve:



Sample Configuration & Quantity Under Test:

Quantity: 4

Test Result:

No problem was found during the low temperature operation test.

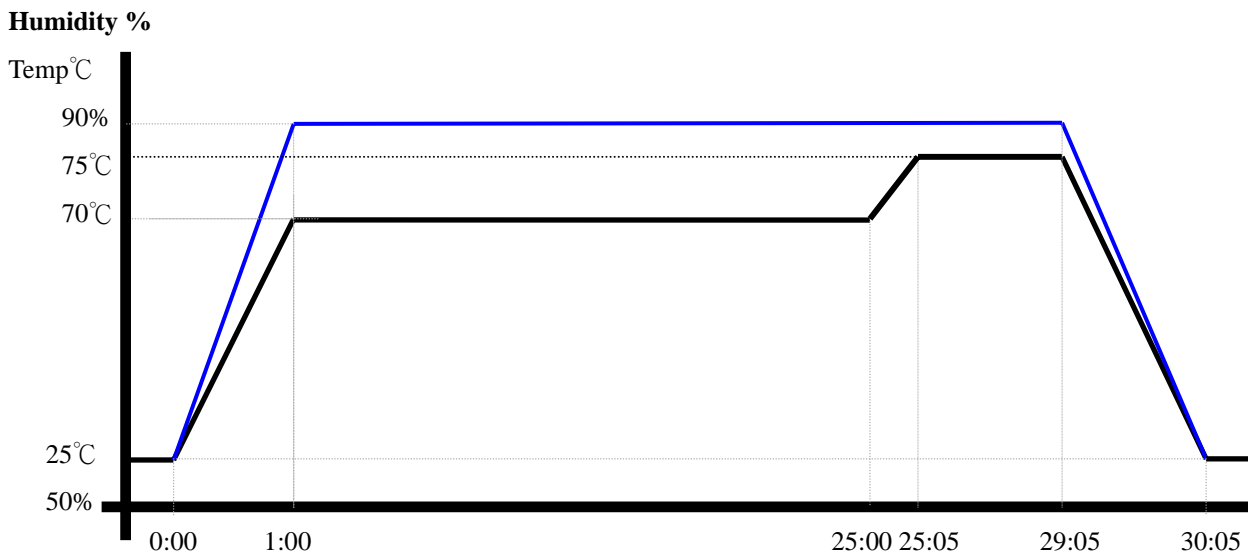
Test Date: 10-24~25-2008

Test Site: AAEON QA Internal Lab.

Test Standard: Reference IEC 68-2-3 Testing procedures
Test Ca: Damp Heat steady state Test

Test Equipment:
Programmable Temperature & Humidity Chamber
K.SON. INS. TECH. CORP.
Model: THS-B6T-150+LN2
Date of Calibration: 04/17/08
Serial Number: 6488KT

- Test Condition:**
1. Test Temperature: 70°C, 90°C
 2. Test Humidity: 90%RH
 3. Test Times: 70°C/24Hrs; 75°C/4Hrs
 4. Test Software: Windows XP / Run PassMark Burn In Test 4.0 Pro
 5. Test Environment Curve:



Sample Configuration & Quantity Under Test:

Quantity: 4

Test Result:

No problem was found during the high temp./humidity operation test.

Test Date: 10-27~30-2008

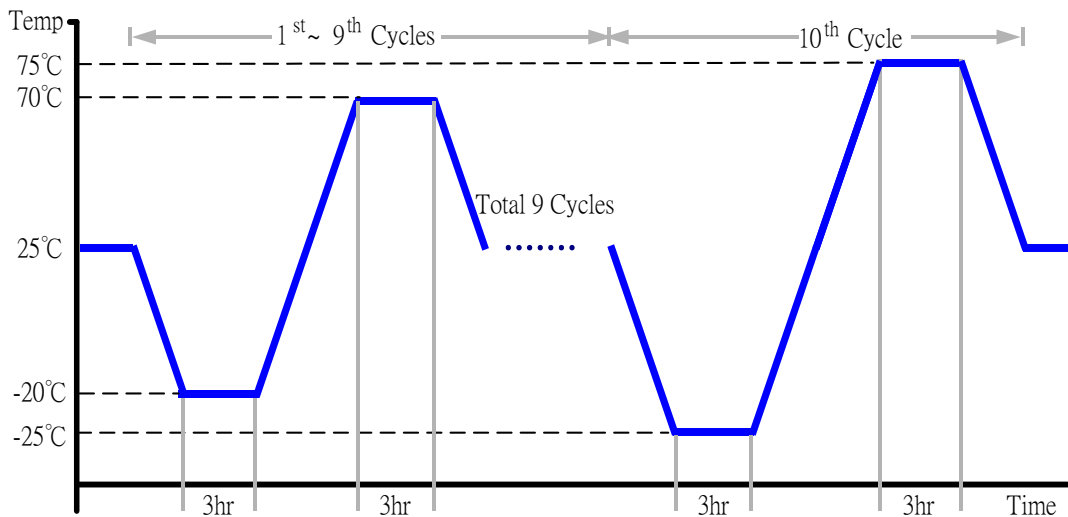
Test Site: AAEON QA Internal Lab.

Test Standard: Reference IEC 68-2-14 Testing procedures
Test N: Change of temperature Test

Test Equipment:
Programmable Temperature & Humidity Chamber
K.SON. INS. TECH. CORP.
Model: THS-D7S-100+1 N2
Date of Calibration: 12/13/07
Serial Number: 3898

Test Condition:

1. Test Low Temperature: -20°C (1~9 cycles)
-25°C (10th cycle)
2. Test High Temperature: 70°C (1~9 cycles)
75°C (10th cycle)
3. Test dwell time: 3Hrs
4. Temperature slope: 15°C/min
5. Test cycle: 10 cycles
6. Test Software: Windows XP / Run PassMark Burn In Test 4.0 Pro
7. Test Environment Curve:



Sample Configuration & Quantity Under Test:

Quantity: 4

Test Result:

No problem was found during the variation temperature operation test.