

Test item list

1. <i>Test item list</i> -----	2
2. <i>Temp./humidity power on/off Test</i> -----	3
3. <i>Temperature cycle operation test</i> -----	4
4. <i>High temperature storage test</i> -----	7
5. <i>Low temperature storage test</i> -----	8
6. <i>Humidity test</i> -----	9
7. <i>Cold start and hot start test</i> -----	10

Num	Item	Spec
1.	Mounting Chassis:	FWS-6700
	1. PCB / CPU	FWB-6700 A0.1 (BIOS0.3 10/19/2007) / VIA Eden 400MHz
	2. North Bridge	VIA CN700
	3. South Bridge	VIA VT8237R
	4. Memory	KINMAX DDR2-533 512MB / KLBC28K-A8K14
	5. CFD	PQI 32MB (for DOS mode Power on/off test)
	6. IDE HDD	Fujitsu 2.5" MHV2060AT 60GB
	7. Test Software	Windows XP / Run PassMark Burn In Test 4.0 Pro
2.	Adapter	FSP FSP065-A 19V 3.42A

Test Date: 10-30~31-2007

Test Product: FWB-6700 A0.1

Test Site: AAEON QA Internal Lab.

Test Standard: Reference IEC 68-2-30 Testing procedures
Test Db: Damp Heat Test

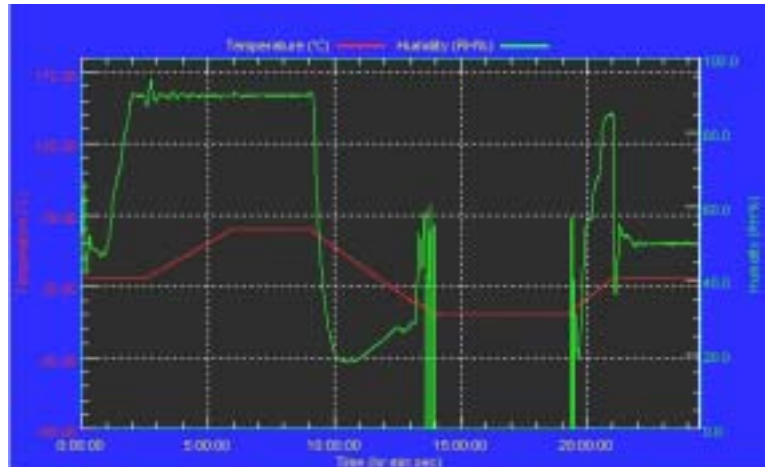
Test Equipment:
Programmable Temperature & Humidity Chamber
K.SON. INS. TECH. CORP.
Model: THS-D4H+-100
Date of Calibration: 05/16/07
Serial Number: 1241

Temperature & Humidity Power On/Off Test:

Testing Specification:

Step	Temperature ()	Humidity (%RH)	Duration (HH:MM)
1	25	50	00:30
2	25	50	00:30
3	25	90	01:00
4	25	90	00:30
5	60	90	03:30
6	60	90	03:00
7	0	0	04:50
8	0	0	05:23
9	25	50	01:47
10	25	50	03:00

Test Curve:



Sample Configuration & Quantity Under Test:

Quantity: 1 (FWB-6700)

Test Result:

No problem was found during the Temperature & Humidity Power On/Off Test..

Test Method	Actual	Successful	Failure rate	On time	Off Time
Power On/Off Test (Dos Mode)	1430/times	1427/times	0 %	40 Sec.	5 Sec.

Temperature cycle test

Test Date: 11-02~05-2007

Test Product: FWS-6700

Test Site: AAEON QA Internal Lab.

Test Standard: Reference IEC68-2-14 Testing procedures
Test N: Change of temperature Test

Test Equipment:

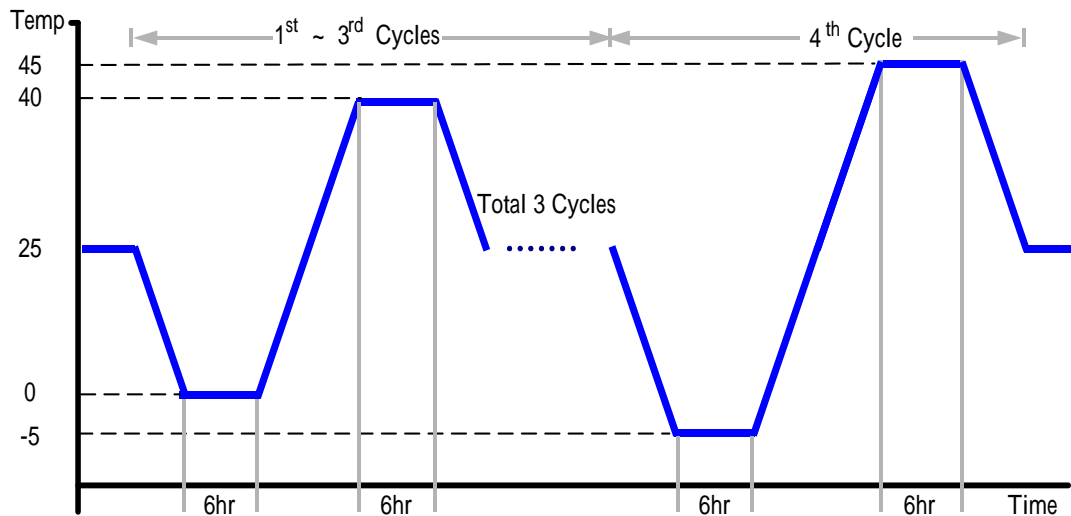
Programmable Temperature & Humidity Chamber
K.SON. INS. TECH. CORP.
Model: THS-D4H+-100
Date of Calibration: 05/16/07
Serial Number: 1241

Temperature Measurement:

40 Channel Thermal Recorder:
YOKOGAWA Inc,
Model: DA100-13-1D
Date of Calibration: 12/11/06
Serial Number: 12A323190

Test Condition:

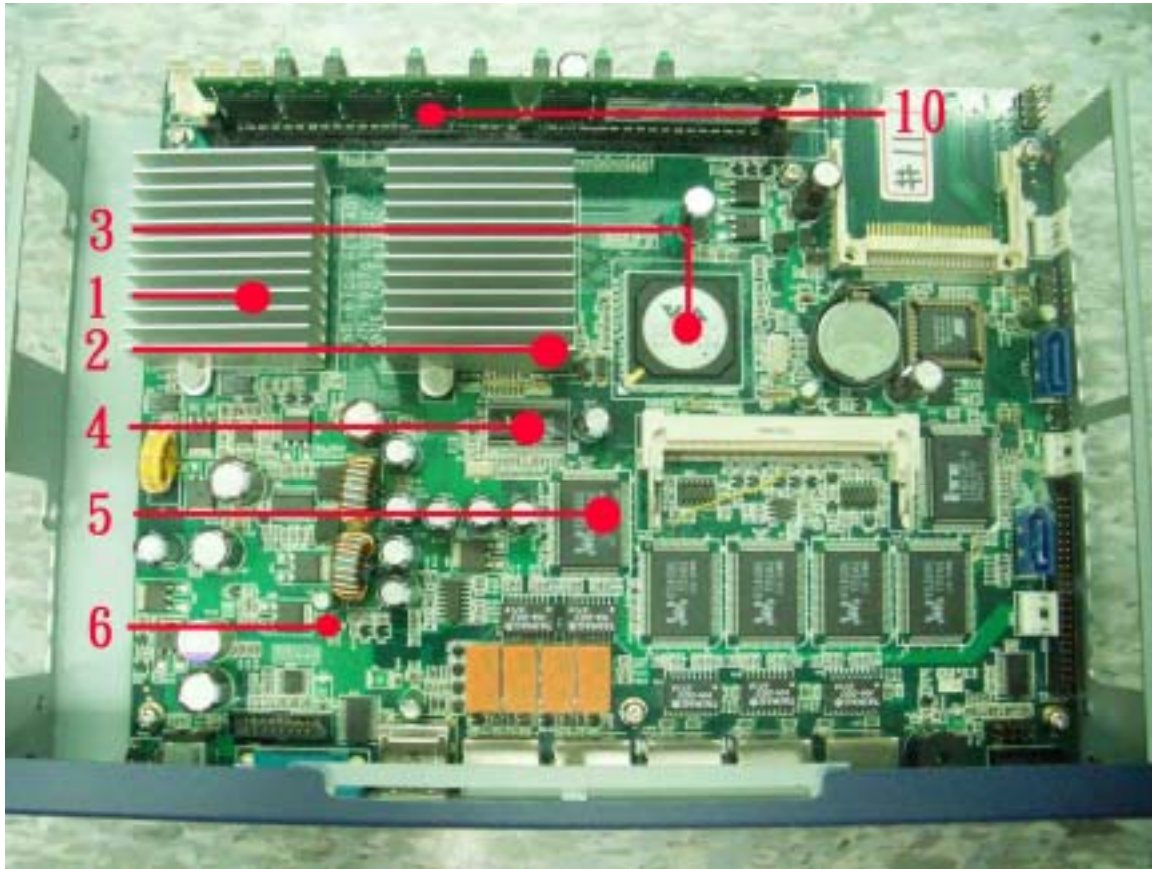
1. Test Low Temperature: 0 (1~3 cycles)
-5 (4th cycle)
2. Test High Temperature: 40 (1~3 cycles)
45 (4th cycle)
3. Test dwell time: 6Hrs
4. Temperature slope: 2 /min
5. Test cycle: 4 cycles
6. Test Environment Curve:



Temperature cycle test

Temperature Recorder:

Measuring Thermal Couple Position :



Temperature cycle test

Thermal profile data:

FWS-6700

Point	Temp. Stage()	Spec	40	25	0
1. CPU		100	75.6	60.6	35.6
2. U8 - North Bridge.VIA.CN700		85	82.4	67.4	42.4
3. U9 - South Bridge.VIA.VT8237R+		85	82.7	67.7	42.7
4. U14 - Clock Generator.REALTEK.RTM866-522-VD-LF		95	94.0	79.0	54.0
5. U22 - PCI Ethernet Chip 10/100BaseT.REALTEK.RTL8100C-LF		95	77.3	62.3	37.3
6. Q37 - Terminal Low Regulator.ANPEC.APL78L05EC-TRL		125	91.9	76.9	51.9
7. Control Box Inside Air -1		N/A	54.1	39.1	14.1
8. Control Box Inside Air -2		N/A	53.5	38.5	13.5
9. HDD		55	60.4	45.4	20.4
10.Memory		70	73.1	58.1	33.1
11.Control Box External Surface		N/A	53.7	38.7	13.7
12.Chamber Air Temperature		N/A	40.2	25.2	0.2

Any Tm value showed in red words which meaning the value over the Tc + 5 degree C of this device specification.

Sample Configuration & Quantity Under Test:

Quantity: 1 (FWS-6700)

Test Result:

No problem was found during the temperature cycle operation test. But point 9 (HDD) is over spec.

High temperature storage test

Test Date: 11-03~04-2007

Test Product: FWS-6700

Test Site: AAEON QA Internal Lab.

Test Standard: Reference IEC 68-2-2 Testing procedures
Test Bb: Dry Heat Test (Non-operation)

Test Equipment:

Programmable Temperature & Humidity Chamber
K.SON. INS. TECH. CORP.

Model: THS-D4H+-100

Date of Calibration: 05/16/07

Serial Number: 1241

Testing Item:

1. Test Temperature: 60
2. Test Times: 48Hrs
3. Test Software: Windows XP / Run PassMark Burn In Test 4.0 Pro
4. Test Environment Curve:



Sample Configuration & Quantity Under Test:

Quantity: 1 (FWS-6700)

Test Result:

No problem was found after the high temperature storage test.

Low temperature storage test

Test Date: 11-01~02-2007

Test Product: FWS-6700

Test Site: AAEON QA Internal Lab.

Test Standard: Reference IEC 68-2-1
Testing procedures Test Ab: Cold Test (Non-operation)

Test Equipment:

Programmable Temperature & Humidity Chamber
K.SON. INS. TECH. CORP.

Model: THS-D4H+-100

Date of Calibration: 05/16/07

Serial Number: 1241

Testing Item:

1. Test Temperature: -20
2. Test Times: 48Hrs
3. Test Software: Windows XP / Run PassMark Burn In Test 4.0 Pro
4. Test Environment Curve:



Sample Configuration & Quantity Under Test:

Quantity: 1 (FWS-6700)

Test Result:

No problem was found after the low temperature storage test.

Humidity test

Test Date: 10-29~30-2007

Test Product: FWS-6700

Test Site: AAEON QA Internal Lab.

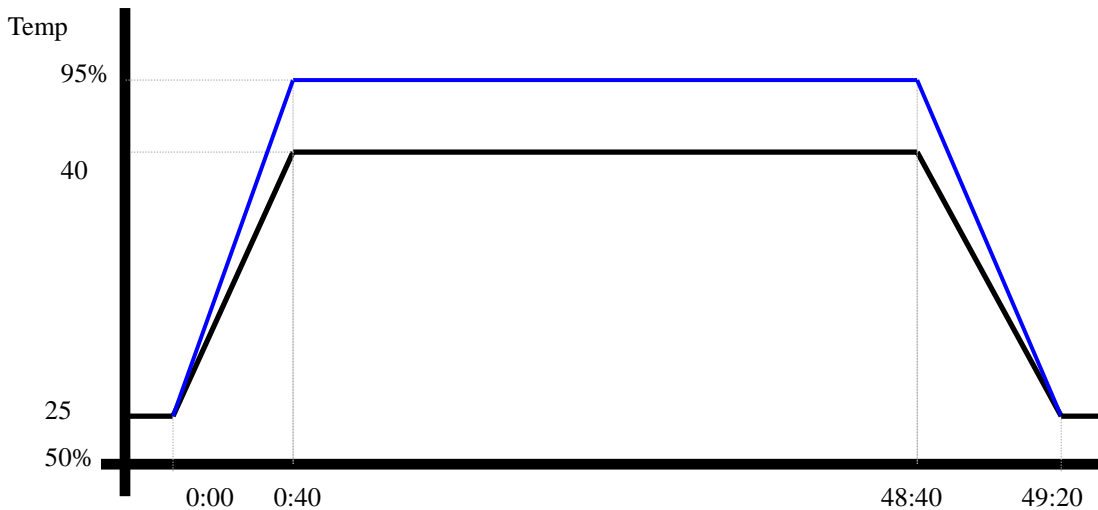
Test Standard: Reference IEC 68-2-3 Testing procedures
Test Ca: Damp heat, steady state (Non-operation)

Test Equipment:
Programmable Temperature & Humidity Chamber
K.SON. INS. TECH. CORP.
Model: THS-D4H+-100
Date of Calibration: 05/16/07
Serial Number: 1241

Testing Item:

1. Test Temperature: 40
2. Test Humidity: 95%RH
3. Test Times: 48Hrs
4. Test Software: Windows XP / Run PassMark Burn In Test 4.0 Pro
5. Test Environment Curve:

Humidity %



Sample Configuration & Quantity Under Test:
Quantity: 1 (FWS-6700)

Test Result:
No problem was found after the humidity test.

Cold start and hot start test

Test Date: 11-01~02-2007

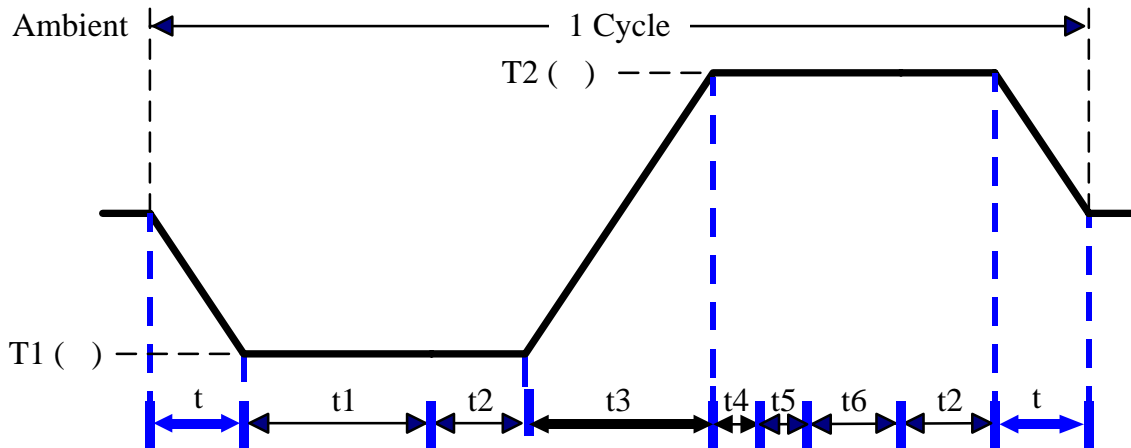
Test Site: AAEON QA Internal Lab.

Test Product: FWS-6700

Test Standard: Reference IEC 68-2-14 Testing procedures
Test N: Change of temperature Test

Test Equipment:
Programmable Temperature & Humidity Chamber
K.SON. INS. TECH. CORP.
Model: THS-D4H+-100
Date of Calibration: 05/16/07
Serial Number: 1241

Test Condition:



Parameters	Description
T1	5
T2	45
t1	4 hrs
t2, t6	2 hrs
t4, t5	1hrs
t, t3	2 /min
n (Cycle)	1

t = temprature slope
t , t1, t6: Power Off
t2: Power on/off test 10 times (on 2 min / off 5min)
t3, t4: Run PassMark Burn In Test
t5: Win XP Software restart test 3 times
Test Software: Windows XP

Test Result:

- a. No problem was found during the cold start test.
- b. No problem was found during the hot start test.