



# Test item list

1. <i>Test item list</i> -----	2
2. <i>Temp./humidity power on/off test</i> -----	3
3. <i>Temperature variation operation test</i> -----	4
4. <i>Cold start and hot start test</i> -----	5

## Test Product: FSB-945G + BP-208SG-P4 A1.1

### Sample Configuration & Quantity Under Test:

1. CPU: Intel Pentium 4 /3.4GHz (Bios Ver.1.1)
2. Chipset: Intel 945G / ICH7M
3. VGA: Intel 945G
4. Memory: Kingston 512MB / HYB18T512 (DDR2-667)
5. DOM: PQI 32MB
6. IDE HDD: Seagate ST3160815A / 160GB
7. Test Software: Windows XP / Run PassMark Burn In Test 5.1 Pro
8. ATX Power Supply: Seventeam ST-350EAG-05G
9. Backplane: BP-208SG-P4 A1.1
10. CPU Cooler:



# Temp./humidity power on/off test

**Test Date:** 04-21~22-2009

**Test Site:** AAEON QA Internal Lab.

**Test Standard:** Reference IEC 68-2-30 Testing procedures  
Test Db: Damp Heat Test

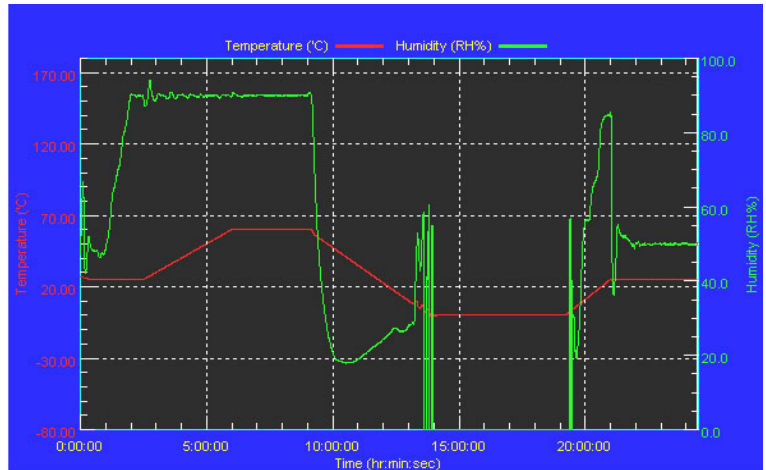
**Test Equipment:**  
Programmable Temperature & Humidity Chamber  
K.SON. INS. TECH. CORP.  
Model: THS-A4C-100  
Date of Calibration: 06/18/08  
Serial Number: 3188

## Temperature & Humidity Power On/Off Test:

### Testing Specification:

Step	Temperature (°C)	Humidity (%RH)	Duration (HH:MM)
1	25	50	00:30
2	25	50	00:30
3	25	90	01:00
4	25	90	00:30
5	60	90	03:30
6	60	90	03:00
7	0	0	04:50
8	0	0	05:23
9	25	50	01:47
10	25	50	03:00

### Test Curve:



### Test Result:

No problem was found during the temperature & humidity power on/off test.

**Test Date:** 04-22~23-2009

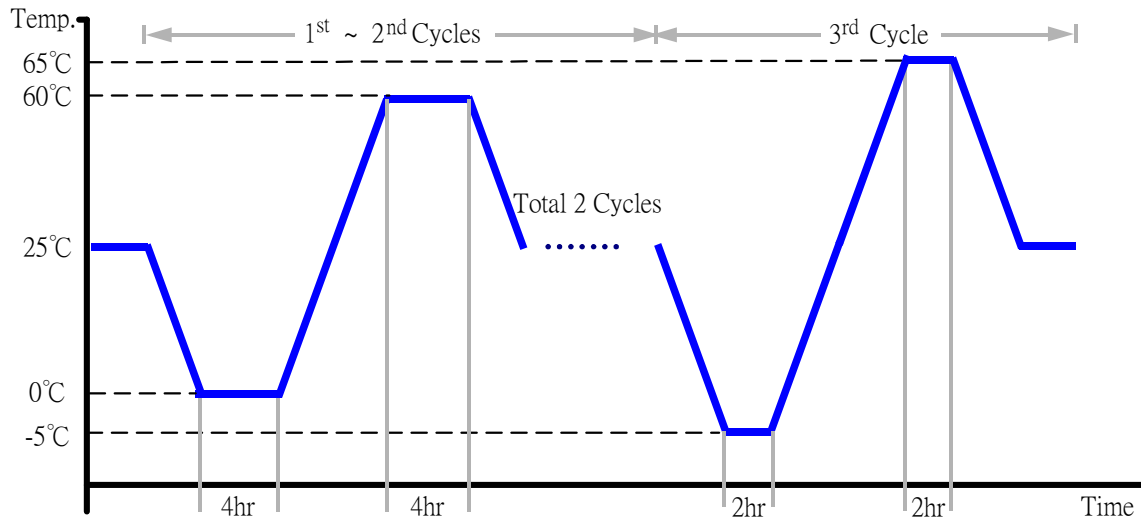
**Test Site:** AAEON QA Internal Lab.

**Test Standard:** Reference IEC 68-2-14 Testing procedures  
Test N: Change of temperature Test

**Test Equipment:**  
Programmable Temperature & Humidity Chamber  
K.SON. INS. TECH. CORP.  
Model: THS-A4C-100  
Date of Calibration: 06/18/08  
Serial Number: 3188

### Temperature & Humidity Cycle Test:

1. Test Low Temperature: 0°C (1~2 cycles)  
-5°C (3<sup>rd</sup> cycle)
2. Test High Temperature: 60°C (1~3 cycles)  
65°C (3<sup>rd</sup> cycle)
3. Test dwell time: 4Hrs (1~2 cycles)  
2Hrs (3<sup>rd</sup> cycle)
4. Temperature slope: 2°C/min
5. Test cycle: 3 cycles
6. Test Environment Curve:



### Test Result:

No problem was found during the temperature variation operation test.

# Cold start and hot start test

**Test Date:** 04-24-2009

**Test Site:** AAEON QA Internal Lab.

**Test Standard:** Reference IEC 68-2-14 Testing procedures  
Test N: Change of temperature Test

**Test Equipment:**  
Programmable Temperature & Humidity Chamber  
K.SON. INS. TECH. CORP.  
Model: THS-A4C-100  
Date of Calibration: 06/18/08  
Serial Number: 3188

**Test Condition:**



Parameters	Description
T1	-5°C
T2	65°C
t1	1 hrs
t2	2 hrs
t4, t5	30 min
t, t3	2°C/min
n (Cycle)	1

t,t3 = temprature slope  
t, t1: Power Off  
t2: Power on/off test 10 times (on 2 min / off 5min)  
t3,t4: Run PassMark Burn In Test  
t5: Win XP Software restart test 2 times  
Test Software:Windows XP

**Test Result:**

- a. No problem was found during the cold start test.
- b. No problem was found during the hot start test.