



Industrial Computing Platform Partner

FSB-868G

Temperature cycle Test Report

Report NO: 06I020007

Issued by: ***Rex Chang*** / ***07/28/2006***

Test Engineer Date

Reviewed by: ***Wenyuan Yang*** / ***07/28/2006***

Manager Date

Temperature cycle test

Test Date: 07-24~28-2006

Test Product: FSB-868G A0.2

Test Site: AAEON QA Internal Lab.

Performed By: Rex Chang

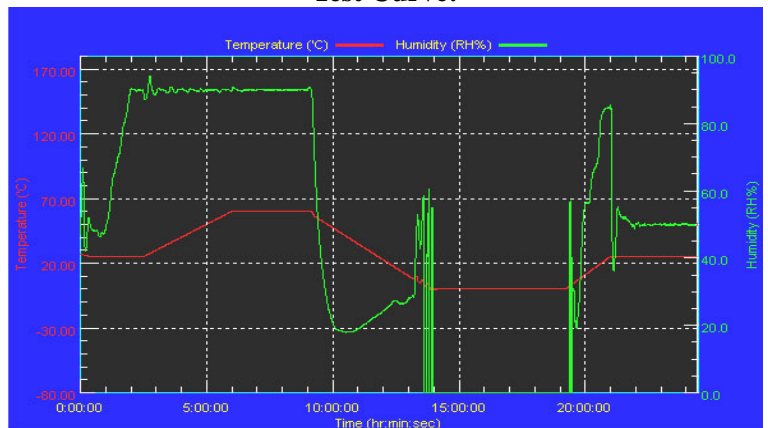
Test Standard: Reference IEC 68-2-30 Testing procedures
 Test DB: Damp Heat Test
 Reference IEC 68-2-61 Testing procedures
 Test Z/ABD: Climatic Sequence Test

Test Equipment:
 Programmable Temperature & Humidity Chamber
 K.SON. INS. TECH. CORP.
 Model: THS-D7S-100+1 N2
 Date of Calibration: 12/14/05
 Serial Number: 3898

**Temperature & Humidity Power On/Off Test:
 Testing Specification:**

Step	Temperature (°C)	Humidity (%RH)	Duration (HH:MM)
1	25	50	00:30
2	25	50	00:30
3	25	90	01:00
4	25	90	00:30
5	60	90	03:30
6	60	90	03:00
7	0	0	04:50
8	0	0	05:23
9	25	50	01:47
10	25	50	03:00

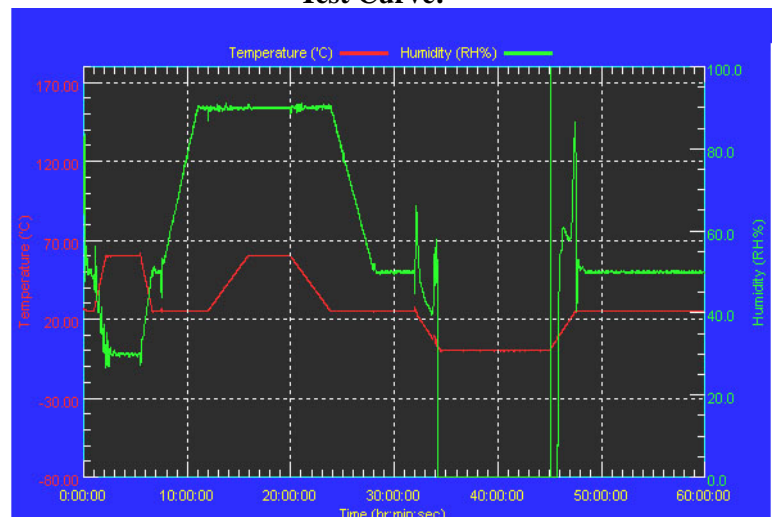
Test Curve:



**Temperature & Humidity Cycle Test:
 Testing Specification**

Step	Temperature (°C)	Humidity (%RH)	Duration (HH:MM)
1	25	50	00:30
2	25	50	00:30
3	60	30	01:10
4	60	30	03:20
5	25	50	01:10
6	25	50	00:50
7	25	90	03:30
8	25	90	01:00
9	60	90	03:53
10	60	90	04:07
11	25	90	03:53
12	25	50	04:07
13	25	50	03:30
14	25	50	00:30
15	0	0	02:30
16	0	0	10:30
17	25	50	02:30
18	25	50	00:30

Test Curve:

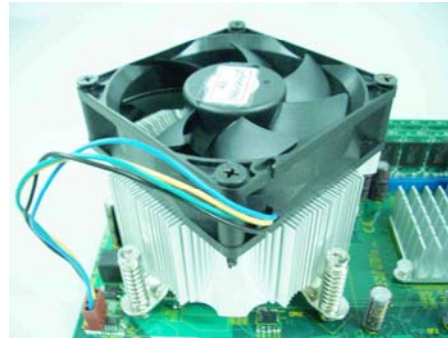


Temperature cycle test

Sample Configuration & Quantity Under Test:

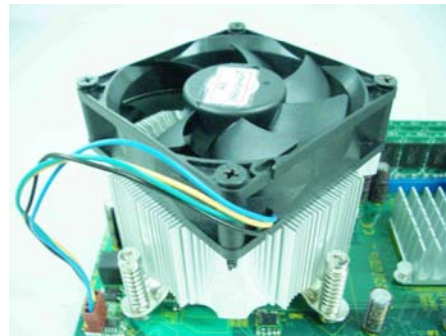
1. Temperature & Humidity Power On/Off Test:

1. CPU: Intel Pentium 4 / 2.8GHz CPU (Bios Ver.0.4)
2. Memory: 1GB ELPIDA E5108AG-5C-E (DDR2-533)
3. Chipset: Intel 945G + Intel 82801FB(ICH7)
4. VGA: Integrated VGA on Intel 945G
5. LAN: Marvell 88E8036 * 2
6. DOM: PQI 16MB
7. AT Power Supply: AOpen AO350-12AHN
8. CPU Cooler:



2. Temperature & Humidity Cycle Test:

1. CPU: Intel Pentium 4 / 3.8GHz CPU (Bios Ver.0.4)
2. Memory: 1GB KINGMAX HY5PS12821 F-C4 (DDR2-533) * 2
3. Chipset: Intel 945G + Intel 82801FB(ICH7)
4. VGA: Integrated VGA on Intel 945G
5. LAN: Marvell 88E8036 * 2
6. HDD: SATA Seagate ST3120026AS 120GB
7. Backplane: BP-213RG-P4 A1.1
8. AT Power Supply: AOpen AO350-12AHN
9. CPU Cooler:



Test Result:

1. Temperature & Humidity Power On/Off Test:

No problem was found during the Temperature & Humidity Power On/Off Test.

2. Temperature & Humidity Cycle Test:

No problem was found during the Temperature & Humidity Cycle Test.