



Industrial Computing Platform Partner

ETX-821

Bulletin

Temperature cycle Test Report

Report NO: 07E020001

Issued by:

Rex Chang

/

01/12/2007

Test Engineer

Date

Reviewed by:

Wenyuan Yang

/

01/12/2007

Manager

Date

Temperature cycle test

Test Date: 01-10~12-2007

Test Product: ETX-821 (ATX Power) Rev: A1.2 + ECB-901A A1.0-A

Test Site: AAEON QA Internal Lab.

Performed By: Rex Chang

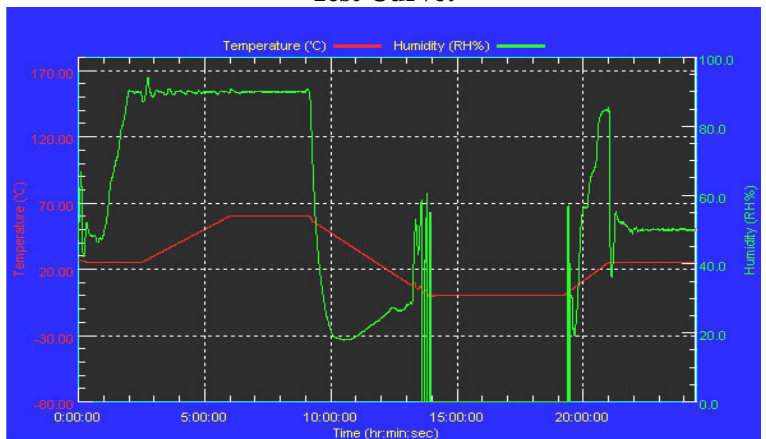
Test Standard: Reference IEC 68-2-30 Testing procedures
 Test DB: Damp Heat Test
 Reference IEC 68-2-61 Testing procedures
 Test Z/ABD: Climatic Sequence Test

Test Equipment:
 Programmable Temperature & Humidity Chamber
 K.SON. INS. TECH. CORP.
 Model: THS-A4C-100
 Date of Calibration: 07/07/06
 Serial Number: 3188

**Temperature & Humidity Power On/Off Test:
 Testing Specification:**

Step	Temperature (°C)	Humidity (%RH)	Duration (HH:MM)
1	25	50	00:30
2	25	50	00:30
3	25	90	01:00
4	25	90	00:30
5	60	90	03:30
6	60	90	03:00
7	0	0	04:50
8	0	0	05:23
9	25	50	01:47
10	25	50	03:00

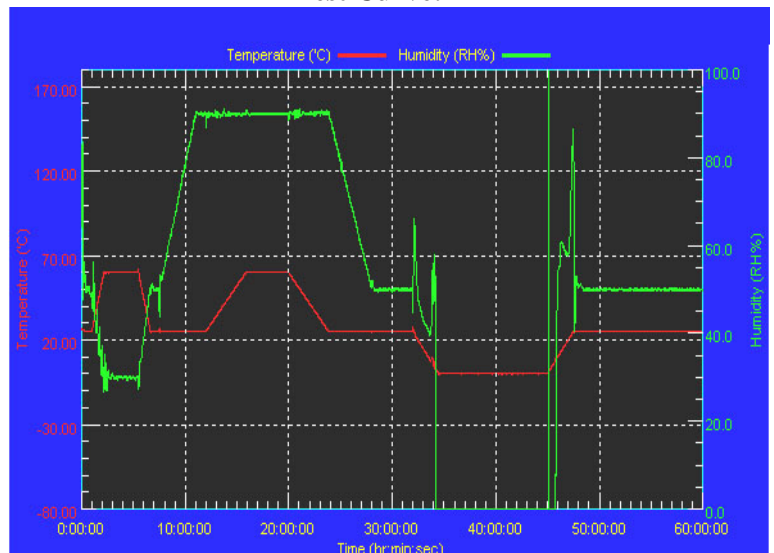
Test Curve:



**Temperature & Humidity Cycle Test:
 Testing Specification**

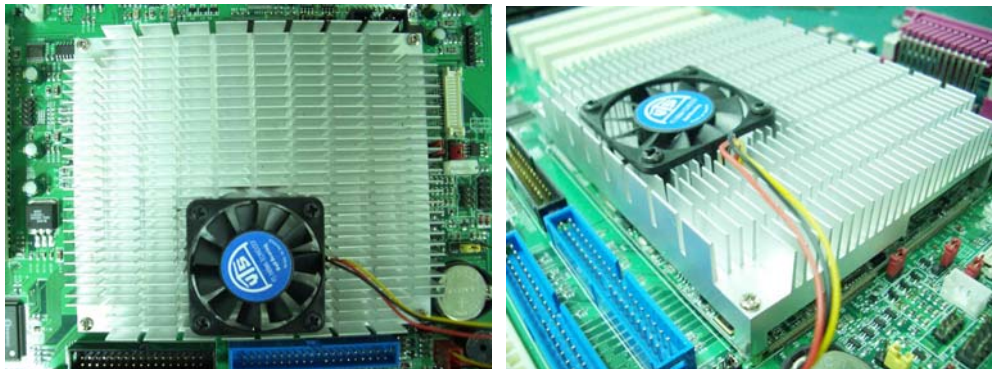
Step	Temperature (°C)	Humidity (%RH)	Duration (HH:MM)
1	25	50	00:30
2	25	50	00:30
3	60	30	01:10
4	60	30	03:20
5	25	50	01:10
6	25	50	00:50
7	25	90	03:30
8	25	90	01:00
9	60	90	03:53
10	60	90	04:07
11	25	90	03:53
12	25	50	04:07
13	25	50	03:30
14	25	50	00:30
15	0	0	02:30
16	0	0	10:30
17	25	50	02:30
18	25	50	00:30

Test Curve:



Sample Configuration & Quantity Under Test:

1. CPU: Onboard Intel Pentium M / 2.0GHz (Bios Ver.1.1)
2. Memory: 1GB Kingmax KDLD88T4AC-60 (DDR333)
3. Chipset: Intel 852GM+ICH4 or 855GME+ICH4
4. VGA: Intel 82852GM integrated
5. LAN: Intel 82562ET
6. CFD: PQI 32MB
7. HDD: Maxtor Fireball ATA/133 30GB
8. ATX Power Supply: FSP FSP-250-601U
9. ETX Evaluation Board: ECB-901A A1.0-A
10. CPU Cooler:



Test Result:

1. **Temperature & Humidity Power On/Off Test:**
No problem was found during the Temperature & Humidity Power On/Off Test.
2. **Temperature & Humidity Cycle Test:**
No problem was found during the Temperature & Humidity Cycle Test.