

ETX-625 A0.3 (AT Power)

Test Date: 03-30~04-06-2005

Test Product: ETX-625 A0.3 (BIOS: B0.2) + ECB-901A A0.2

Test Site: AAEON QA Internal Lab.

Performed By: Rex Chang

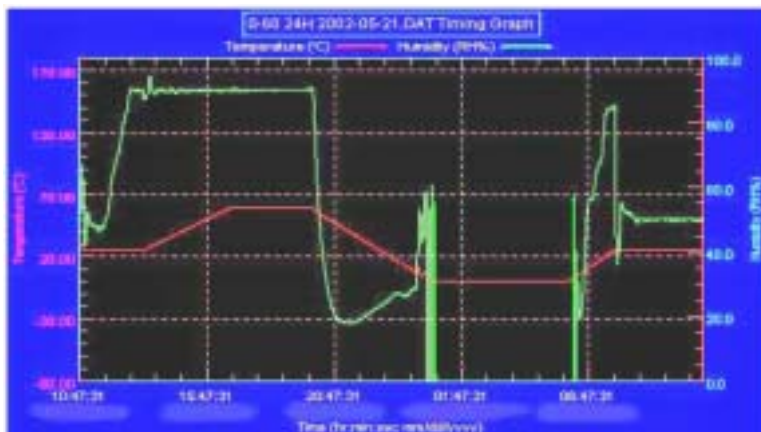
Test Standard: Reference IEC 68-2-30 Testing procedures
 Test DB: Damp Heat Test
 Reference IEC 68-2-61 Testing procedures
 Test Z/ABD: Climatic Sequence Test

Test Equipment:
 Programmable Temperature & Humidity Chamber
 K.SON. INS. TECH. CORP.
 Model: THS-D4L+-100
 Date of Calibration: 11/30/04
 Serial Number: 2582

**Temperature & Humidity Power On/Off Test:
 Testing Specification:**

Step	Temperature ()	Humidity (%RH)	Duration (HH:MM)
1	25	50	00:30
2	25	50	00:30
3	25	90	01:00
4	25	90	00:30
5	60	90	03:30
6	60	90	03:00
7	0	0	04:50
8	0	0	05:23
9	25	50	01:47
10	25	50	03:00

Test Curve:



**Temperature & Humidity Cycle Test:
 Testing Specification**

Step	Temperature ()	Humidity (%RH)	Duration (HH:MM)
1	25	50	00:30
2	25	50	00:30
3	60	30	01:10
4	60	30	03:20
5	25	50	01:10
6	25	50	00:50
7	25	90	03:30
8	25	90	01:00
9	60	90	03:53
10	60	90	04:07
11	25	90	03:53
12	25	50	04:07
13	25	50	03:30
14	25	50	00:30
15	0	0	02:30
16	0	0	10:30
17	25	50	02:30
18	25	50	00:30

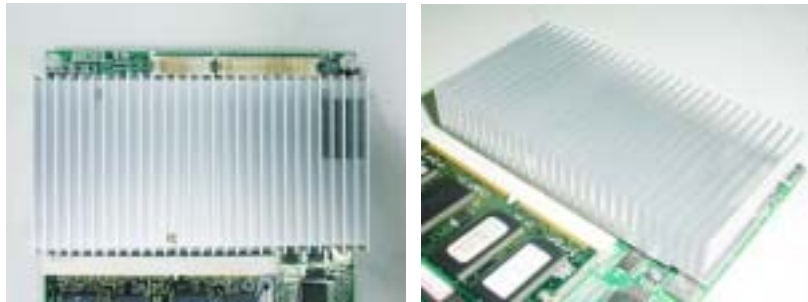
Test Curve:



Sample Configuration & Quantity Under Test:

Sample 1: ETX-625 (Celeron 400MHz) A0.3

1. CPU: Intel Celeron(R) 400MHz
2. Memory: 256MB KINGMAX KSV684T4A2A-07L (PC-133)
3. Chipset: VIA VT8606 / VT82C686B
4. VGA: Integrated S3 in VT8606
5. LAN: Realtek RTL 8100BL 10/100Mb
6. CFD: PQI 32MB
7. HDD: Maxtor DiamondMax Plus 9 / 80GB
8. Test Software: Windows 2000 / Run HCT 9.5
9. Power Supply: Zippy SP2-4300F (AT Power)
10. Heat Sink:



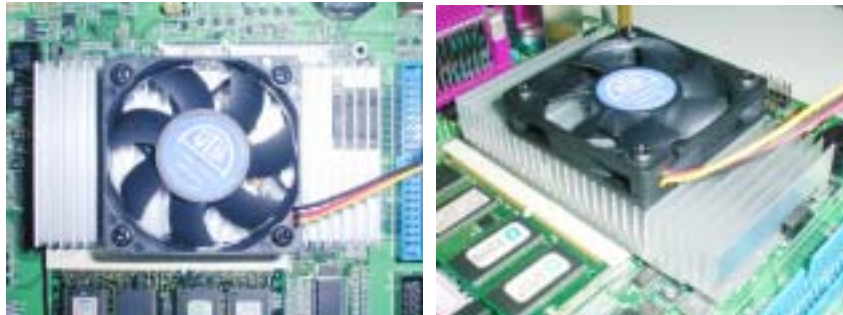
Sample 2: ETX-625 (Celeron 650MHz) A0.3

1. CPU: Intel Celeron(R) 650MHz
2. Memory: 256MB HITACHI HB52F328DC-75B (PC-133)
3. Chipset: VIA VT8606 / VT82C686B
4. VGA: Integrated S3 in VT8606
5. LAN: Realtek RTL 8100BL 10/100Mb
6. CFD: PQI 32MB
7. HDD: Maxtor Fireball 3 ATA/133 40GB
8. Test Software: Windows 2000 / Run HCT 9.5
9. Power Supply: Zippy SP2-4300F (AT Power)
10. Cooler:



Sample 3: ETX-625 (Pentium III / 933MHz) A0.3

1. CPU: Intel Pentium III / 933MHz
2. Memory: 128MB Infineon HYB39S128800CT-75 (PC-133)
3. Chipset: VIA VT8606 / VT82C686B
4. VGA: Integrated S3 in VT8606
5. LAN: Realtek RTL 8100BL 10/100Mb
6. CFD: PQI 32MB
7. HDD: Maxtor Fireball 3 ATA/133 30GB
8. Test Software: Windows 2000 / Run HCT 9.5
9. Power Supply: Zippy SP2-4300F (AT Power)
10. Cooler:



Test Result:

Passed.