

# EPIC-KBS8

## Temperature/Humidity Test Report

Report NO: 18E020001



Summary	<p><input type="checkbox"/> <b>Pass</b></p> <p><input type="checkbox"/> <b>Fail</b> Note : There is/are ___ defect(s) not list in the report, please check it in the DTS Website.</p> <p><input checked="" type="checkbox"/> <b>Pass with Deviation</b> <b>Comment:</b> The Network LAN load setting 100% testing failed under the PassMark BurnIn Test 8.1 Pro, but setting to 99% can test pass. The fail message shows (Timeout waiting for packet). Please refer to the PASSMARK SOFTWARE as below: <a href="http://www.passmark.com/forum/showthread.php?2931-How-to-test-burnin-test-with-Network">http://www.passmark.com/forum/showthread.php?2931-How-to-test-burnin-test-with-Network</a></p>
---------	---

Issue date

2018-03-29

QE Manager

KJ Wang

Test Engineer

Jerry Chen

# Test item list

- 
1. *Test item list* ----- 2
  2. *Configuration of EUT* ----- 3
  3. *Temp./humidity power on/off test* ----- 4
  4. *Temperature variation operation test* ----- 5
  5. *Cold start and hot start test* ----- 6

## Testing Result

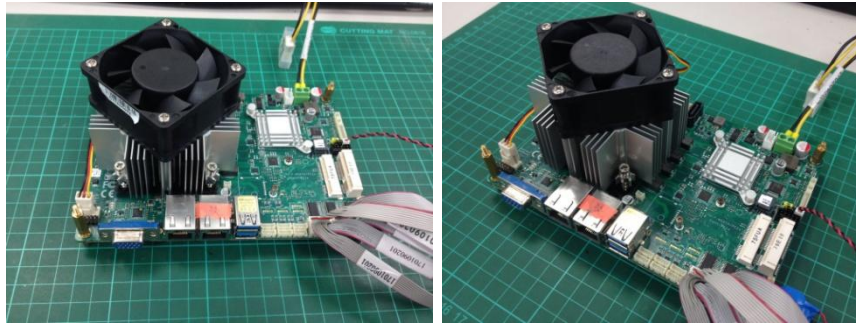
Num	Test item list	Result	Remark
1	Temp./humidity power on/off test	Pass	
2	Temperature variation operation test	Pass	
3	Cold start and hot start test	Pass	

# Configuration of EUT

## Test Product: EPIC-KBS8

### Sample Configuration & Quantity Under Test:

1. Model name: EPIC-KBS8
2. M/B Name: EPIC-KBS8 / Rev. A1.0\_0\_2
3. CPU: Intel Core i7-7700T CPU @ 2.90GHz
4. BIOS Ver.: EPIC-KBS8 R0.7 (EKS8AM07) (03/14/2018)
5. Chipset: PCH H110
6. Memory: DSL / DDR4 2666 8GB CL18 ECC / D4XM1G081SH26A-C
7. 2.5" SATA HDD: HITACHI / Z5K320-160 / 160GB
8. Test Software: Windows 10 / Run PassMark Burn In Test 8.1 Pro (1022)
9. Power supply: Zippy / HG2-6400P / 400W (MAX)
10. Cooler:



# Temp./humidity power on/off test

**Test Date:** 03-23 ~ 26-2018

**Test Site:** AAEON QE Dept.

**Test Standard:** Refer to IEC 68-2-30 Testing procedures  
 Test Db: Damp Heat Test  
 Refer to IEC 68-2-1 Testing procedures  
 Test Ad: Cold Test

**Test Equipment:**

Programmable Temperature & Humidity Chamber: (K.SON. INS. TECH. CORP.)  
 Model: THS-B6T-150+LN2  
 Date of Calibration: 03/16/2018  
 Due date of Calibration: 03/15/2019  
 Serial Number: 6487KT

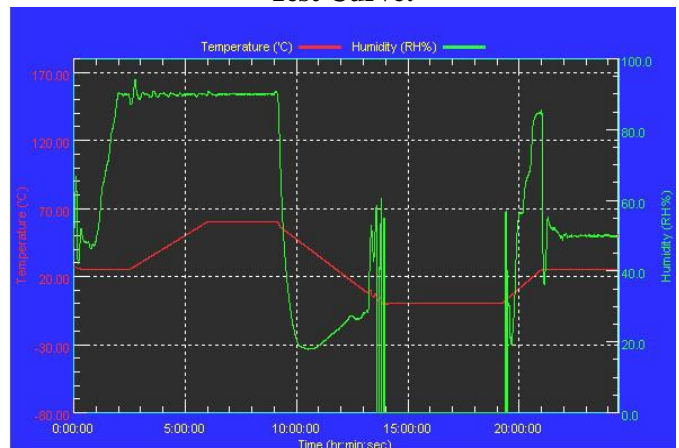
**Temperature & Humidity Power On/Off Test:**

1. Test High Temp./Humidity: 60°C @90%RH
2. Test Low Temperature: 0°C
3. Test Time: 24Hours / Cycle
4. Test Cycle: 1 Cycles
5. Test Software: DOS Mode / Run Boot Up Record Program ver 1.41

**Testing Specification:**

Step	Temperature (°C)	Humidity (%RH)	Duration (HH:MM)
1	25	50	00:30
2	25	50	00:30
3	25	90	01:00
4	25	90	00:30
5	60	90	03:30
6	60	90	03:00
7	0	0	04:50
8	0	0	05:23
9	25	50	01:47
10	25	50	03:00

**Test Curve:**



**Test Result:**

	Actual	Successful	Failure rate	Test Result
Power On/Off	1843/times	1843/times	0 %	Pass

**Note:** 1. Failure rate need to under 0%.  
 2. Power on/off fixture setting: on - 40sec. / off - 5sec.

# Temperature variation operation test

**Test Date:** 03-27 ~ 28-2018

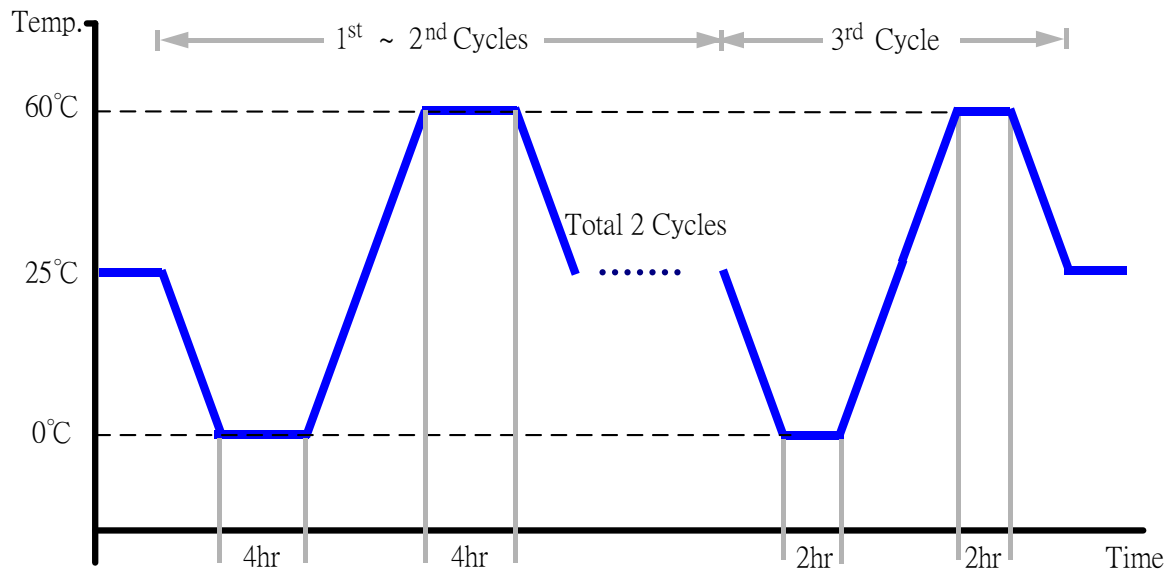
**Test Site:** AAEON QE Dept.

**Test Standard:** Refer to IEC 68-2-14 Testing procedures  
Test N: Change of temperature Test

**Test Equipment:**  
Programmable Temperature & Humidity Chamber: (K.SON. INS. TECH. CORP.)  
Model: THS-B6T-150+LN2  
Date of Calibration: 03/16/2018  
Due date of Calibration: 03/15/2019  
Serial Number: 6487KT

## Temperature & Humidity Cycle Test:

1. Test Low Temperature: 0°C (1~3 cycles)
2. Test High Temperature: 60°C (1~3 cycles)
3. Test dwell time: 4Hrs (1~2 cycles)  
2Hrs (3<sup>rd</sup> cycle)
4. Temperature slope: 2°C/min
5. Test cycle: 3 cycles
6. Test Environment Curve:



## Test Result:

No issues were found during the temperature variation operation test.

# Cold start and hot start test

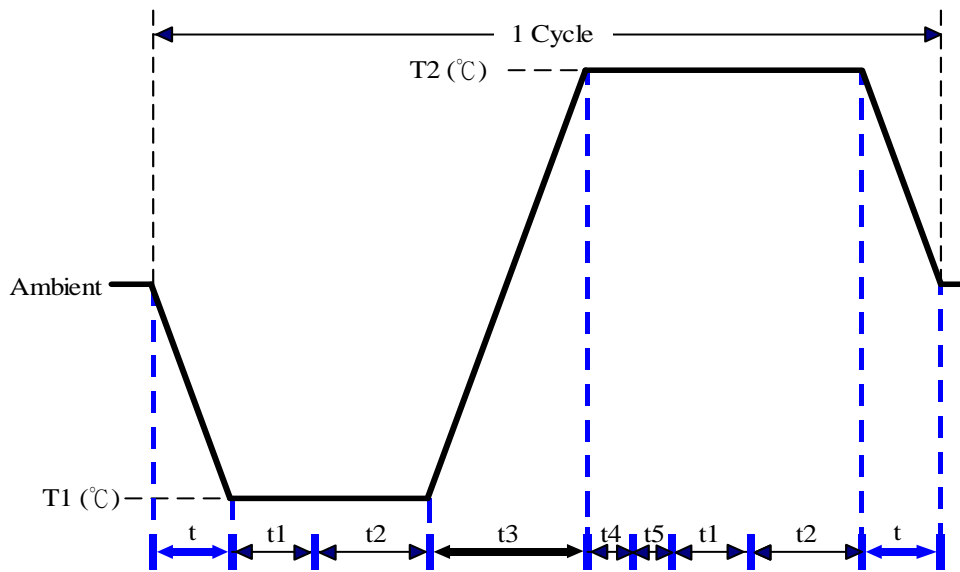
**Test Date:** 03-26 ~ 27-2018

**Test Site:** AAEON QE Dept.

**Test Standard:** Refer to IEC 68-2-14 Testing procedures  
Test N: Change of temperature Test

**Test Equipment:**  
Programmable Temperature & Humidity Chamber: (K.SON. INS. TECH. CORP.)  
Model: THS-B6T-150+LN2  
Date of Calibration: 03/16/2018  
Due date of Calibration: 03/15/2019  
Serial Number: 6487KT

**Test Condition:**



Parameters	Description
T1	0°C
T2	60°C
t1	1 hrs
t2	2 hrs
t4, t5	30 min
t, t3	2°C/min
n (Cycle)	1

- t, t3 = temprature slope
- t, t1: Power Off
- t2: Power on/off test 10 times (on 2 min / off 5min)
- t3, t4: Run PassMark Burn In Test
- T5: Win. 10 Software restart test 2 times
- Test Software: Windows 10

**Test Result:**

- a. No issues were found during the cold start test.
- b. No issues were found during the hot start test.