

EPIC-KBS7 A0.2

Temperature/Humidity Test Report

Report NO:

Summary	<p><input type="checkbox"/> Pass</p> <p><input type="checkbox"/> Fail Note : There is/are ___ defect(s) not list in the report, please check it in the DTS Website.</p> <p><input checked="" type="checkbox"/> Pass with Deviation Comment: <u>1.Under PassMark Burn In Test 8.1 Pro, test Network set loading to 100 % test failed (Error message shows “Timeout waiting for packet”) , but change to 99% test pass. Please refer to for PASSMARK SOFTWARE</u> http://www.passmark.com/forum/showthread.php?2931-How-to-test-burnin-test-with-Network</p>
---------	--

Issue date

QE Manager

Test Engineer

2016-10-20

ChienkowLiao

Dinken Chuang

Test item list

-
1. *Test item list* ----- 2
 2. *Configuration of EUT* ----- 3
 3. *Temp./humidity power on/offtest* ----- 4
 4. *Temperaturevariationoperation test* ----- 5
 5. *Cold start and hot start test* ----- 6

Testing Result

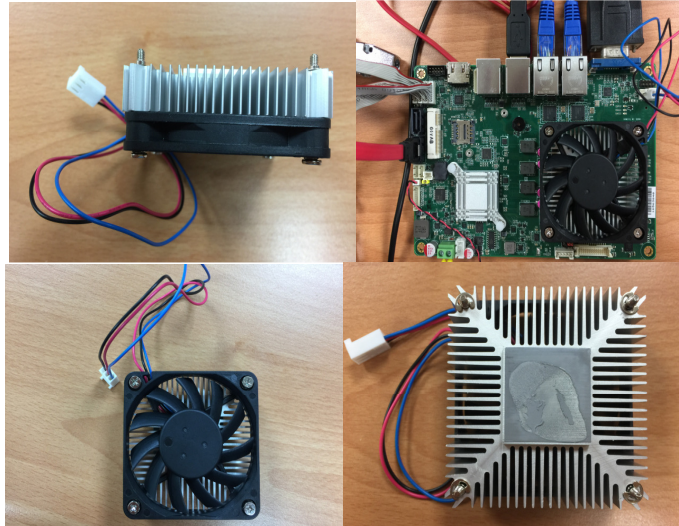
Num	Test item list	Result	Remark
1	Temp./humidity power on/offtest	Pass	
2	Temperaturevariationoperation test	Pass	
3	Cold start and hot start test	Pass	

Configuration of EUT

Test Product: EPIC-KBS7 A0.2

Sample Configuration & Quantity Under Test:

1. CPU: Intel Core i7 6700TE/ 2.3GHz
2. BIOS Ver.ESS7AM02(10/14/2016)
3. Chipset: Intel H110
4. Memory: Transcend 16GB * 1/ DDR4 2133 / SEC K4B2G0846Q
5. USB Flash: Transcend 8GB (For DOS Mode Power On/Off Test)
6. 3.5" SATA HDD: HITACHI H3D3201672S / 320GB
7. Test Software: Windows 10 / Run PassMark Burn In Test 8.1 Pro
8. AT Power Supply: EMACS HG2-6400P / 400W (AT to ATX Mode)
9. Heat Sink:



Temp./humidity power on/off test

Test Date: 10-15 ~ 16-2016

Test Site: AAEON Taichung Internal Lab

Test Standard: Refer to IEC 68-2-30 Testing procedures
 Test Db: Damp Heat Test
 Refer to IEC 68-2-1 Testing procedures
 Test Ad: Cold Test

Test Equipment:

Programmable Temperature & Humidity Chamber: (K.SON. INS. TECH. CORP.)
 Model: MHU-150LB
 Date of Calibration: 01/26/16
 Due date of Calibration: 01/25/17
 Serial Number: 961138

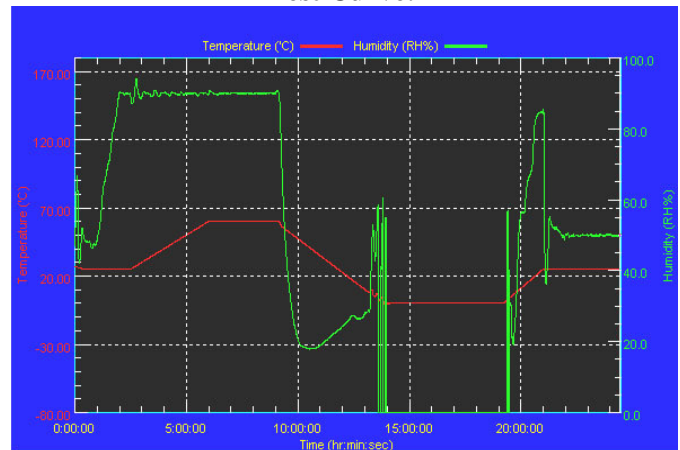
Temperature & Humidity Power On/Off Test:

1. Test High Temp./Humidity: 60°C @90%RH
2. Test Low Temperature: 0°C
3. Test Time: 24Hours / Cycle
4. Test Cycle: 1 Cycles
5. Test Software: DOS Mode / Run Boot Up Record Program ver 1.41

Testing Specification:

Step	Temperature (°C)	Humidity (%RH)	Duration (HH:MM)
1	25	50	00:30
2	25	50	00:30
3	25	90	01:00
4	25	90	00:30
5	60	90	03:30
6	60	90	03:00
7	0	0	04:50
8	0	0	05:23
9	25	50	01:47
10	25	50	03:00

Test Curve:



Test Result:

Test Method	Actual	Successful	Failure rate	Test Result
Power On/Off	1672/times	1672/times	0 %	

Note: 1. Failure rate need to under 0%.
 2. Power on/off fixture setting: on - 40 sec / off - 5 sec

Temperature variation operation test

Test Date: 10-17 ~ 18-2016

Test Site: AAEON Taichung Internal Lab

Test Standard: Refer to IEC 68-2-14 Testing procedures

Test N: Change of temperature Test

Test Equipment:

Programmable Temperature & Humidity Chamber: (K.SON. INS. TECH. CORP.)

Model: MHU-150LB

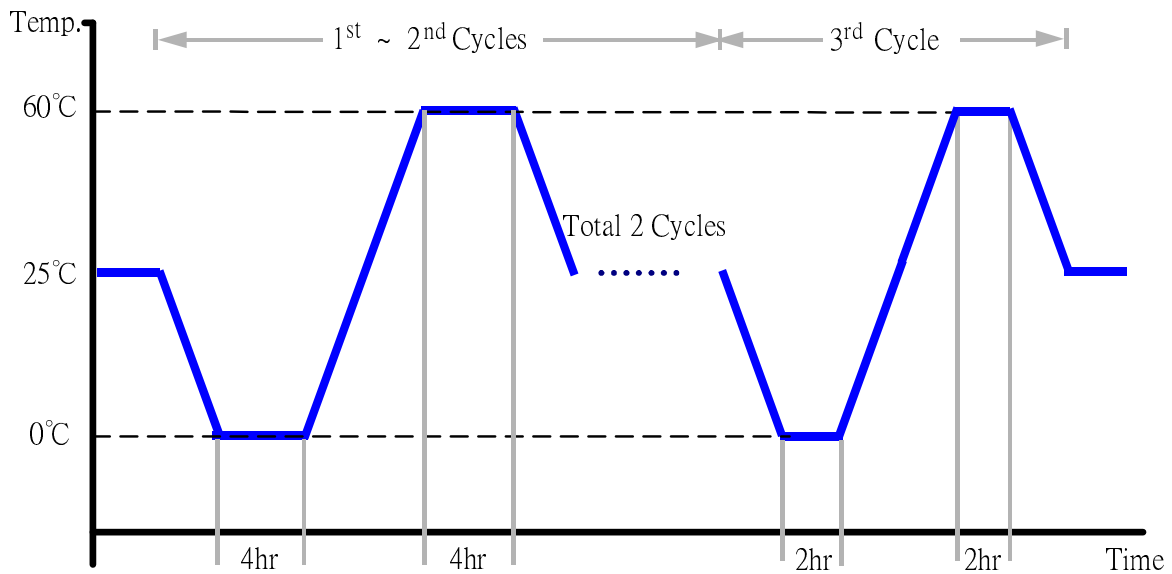
Date of Calibration: 01/26/16

Due date of Calibration: 01/25/17

Serial Number: 961138

Temperature & Humidity Cycle Test:

1. Test Low Temperature: 0°C (1~3 cycles)
2. Test High Temperature: 60°C (1~3 cycles)
3. Test dwell time: 4Hrs(1~2 cycles)
2Hrs (3rdcycle)
4. Temperature slope: 2°C/min
5. Test cycle: 3 cycles
6. Test Environment Curve:



Test Result:

No issues were found during the temperature variation operation test.

Cold start and hot start test

Test Date:10-19-2016

Test Site: AAEON Taichung Internal Lab

Test Standard: Refer to IEC 68-2-14 Testing procedures
 Test N: Change of temperature Test

Test Equipment:

Programmable Temperature & Humidity Chamber: (K.SON. INS. TECH. CORP.)

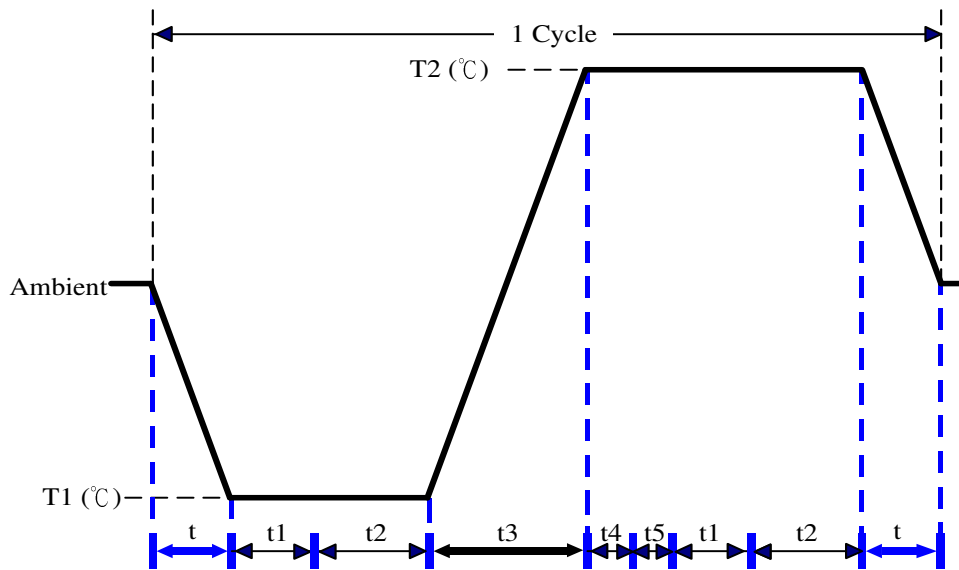
Model: MHU-150LB

Date of Calibration: 01/26/16

Due date of Calibration: 01/25/15

Serial Number: 961138

Test Condition:



Parameters	Description
T1	0°C
T2	60°C
t1	1 hrs
t2	2 hrs
t4, t5	30 min
t, t3	2°C/min
n(Cycle)	1

t, t3=temperature slope
 t, t1 : Power Off
 t2 : Power on/off test 10 times (on 2 min / off 5min)
 t3, t4 : Run PassMark Burn In Test
 t5 : Windows 10 Software resrart test 2 times
 Test Software : Windows 10

Test Result:

- a. No issues were found during the cold start test.
- b. No issues were found during the hot start test.