

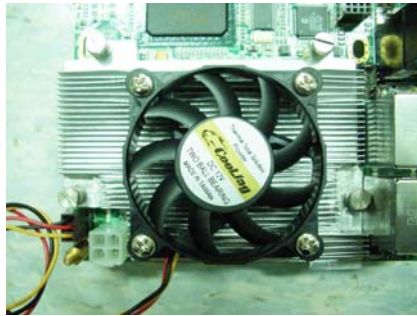
Test item list

1. <i>Test item list</i> -----	2
2. <i>Temp./humidity power on/off test</i> -----	3
3. <i>Temperature variation operation test</i> -----	4
4. <i>Cold start and hot start test</i> -----	5

Test Product: EPIC-9456 A0.2

Sample Configuration & Quantity Under Test:

1. CPU: Intel Core 2 Duo T7400 / Merom 2.16GHz CPU / (Bios Ver.0.7)
2. Chipset: Intel 945GM / ICH7-M
3. VGA: Intel 945GM
4. Memory: Kingston 2GB / MT 7KE12 D9HNL (DDR-667)
5. CFD: PQI 32MB
6. HDD: Maxtor Fireball 3 / 30GB
7. Test Software: Windows XP / Run PassMark Burn In Test 4.0 Pro
8. AT Power Supply: Zippy SP2-4300F
9. CPU Cooler:



Test Date: 02-24~25-2008

Test Site: AAEON QA Internal Lab.

Test Product: EPIC-9456

Test Standard: Reference IEC 68-2-30 Testing procedures
Test Db: Damp Heat Test

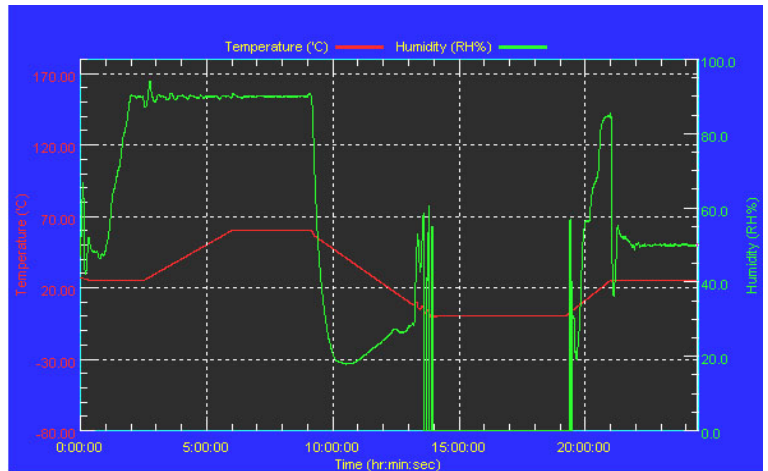
Test Equipment:
Programmable Temperature & Humidity Chamber
K.SON. INS. TECH. CORP.
Model: THS-D4L+-100
Date of Calibration: 11/06/07
Serial Number: 2582

Temperature & Humidity Power On/Off Test:

Testing Specification:

Step	Temperature (°C)	Humidity (%RH)	Duration (HH:MM)
1	25	50	00:30
2	25	50	00:30
3	25	90	01:00
4	25	90	00:30
5	60	90	03:30
6	60	90	03:00
7	0	0	04:50
8	0	0	05:23
9	25	50	01:47
10	25	50	03:00

Test Curve:



Test Result:

No problem was found during the temperature & humidity power on/off test.

Test Date: 02-26~27-2008

Test Site: AAEON QA Internal Lab.

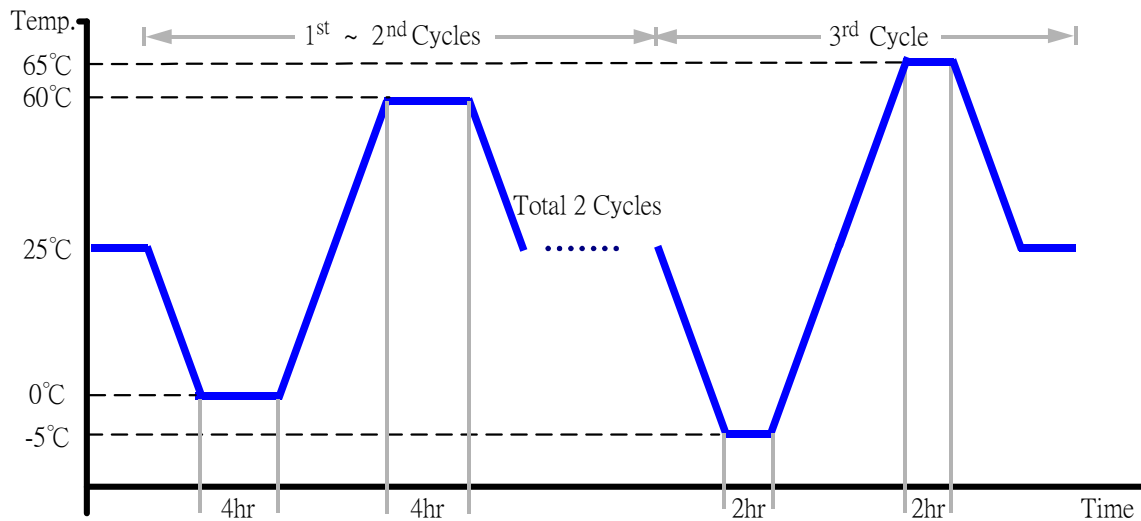
Test Product: EPIC-9456

Test Standard: Reference IEC 68-2-14 Testing procedures
Test N: Change of temperature Test

Test Equipment:
Programmable Temperature & Humidity Chamber
K.SON. INS. TECH. CORP.
Model: THS-D4L+-100
Date of Calibration: 11/06/07
Serial Number: 2582

Temperature & Humidity Cycle Test:

1. Test Low Temperature: 0°C (1~2 cycles)
-5°C (3rd cycle)
2. Test High Temperature: 60°C (1~3 cycles)
65°C (3rd cycle)
3. Test dwell time: 4Hrs (1~2 cycles)
2Hrs (3rd cycle)
4. Temperature slope: 2°C/min
5. Test cycle: 3 cycles
6. Test Environment Curve:



Test Result:

No problem was found during the temperature variation operation test.

Cold start and hot start test

Test Date: 02-26-2008

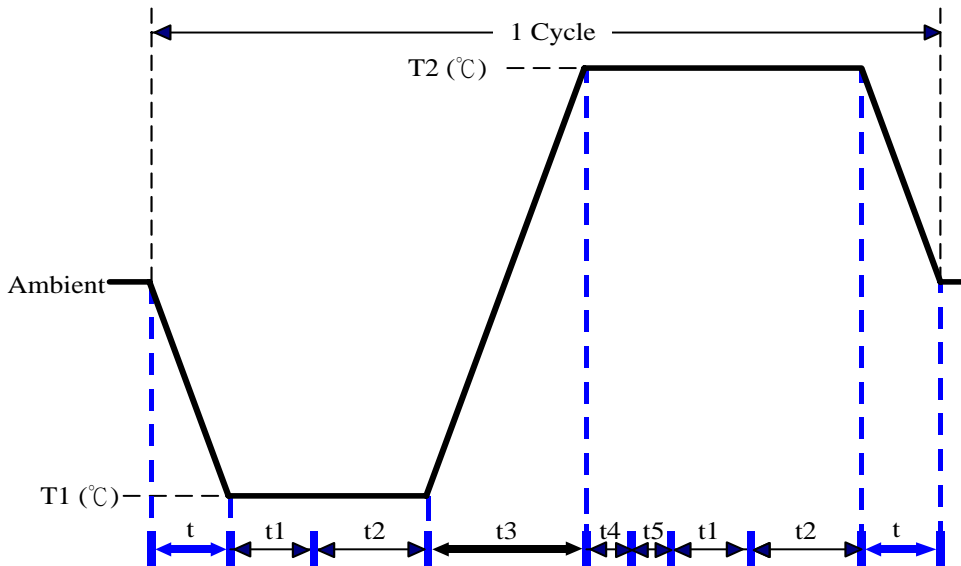
Test Site: AAEON QA Internal Lab.

Test Product: EPIC-9456

Test Standard: Reference IEC 68-2-14 Testing procedures
Test N: Change of temperature Test

Test Equipment:
Programmable Temperature & Humidity Chamber
K.SON. INS. TECH. CORP.
Model: THS-D4L+-100
Date of Calibration: 11/06/07
Serial Number: 2582

Test Condition:



Parameters	Description
T1	-5°C
T2	65°C
t1	1 hrs
t2	2 hrs
t4, t5	30 min
t, t3	2°C/min
n (Cycle)	1

t,t3 = temprature slope
t, t1: Power Off
t2: Power on/off test 10 times (on 2 min / off 5min)
t3,t4: Run PassMark Burn In Test
t5: Win XP Software restart test 2 times
Test Software: Windows XP

Test Result:

- a. No problem was found during the cold start test.
- b. No problem was found during the hot start test.