



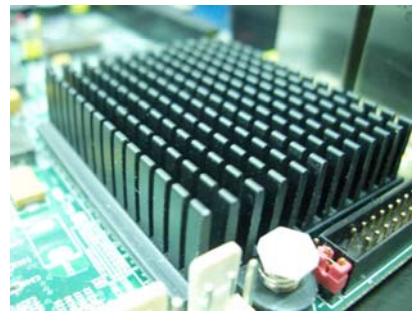
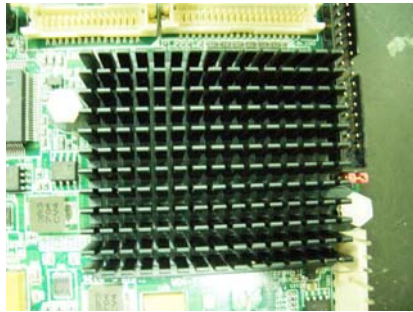
# Test item list

1. <i>Test item list</i> -----	2
2. <i>Temp./humidity power on/off test</i> -----	3
3. <i>Temperature variation operation test</i> -----	4
4. <i>Cold start and hot start test</i> -----	5

## Test Product: EPIC-5536 A0.2

### Sample Configuration & Quantity Under Test:

1. CPU: Onboard AMD Geode LX800 / 500MHz CPU
2. VGA: AMD Geode LX800
3. Chipset: AMD Geode LX800 / CS5536AD
4. Memory: ATP 512MB / SAMSUNG K4H510838C-U (DDR-333)
5. CFD: PQI 32MB
6. HDD: WD 1600JB / 160GB
7. Test Software: Windows XP / Run PassMark Burn In Test 5.1 Pro
8. AT Power Supply: Zippy SP2-4300F
9. Heat Sink:



**Test Date:** 12-14~15-2007

**Test Site:** AAEON QA Internal Lab.

**Test Product:** EPIC-5536 A0.2 (Bios Ver.EPIC-700S 0.52)

**Test Standard:** Reference IEC 68-2-30 Testing procedures  
Test Db: Damp Heat Test

**Test Equipment:**

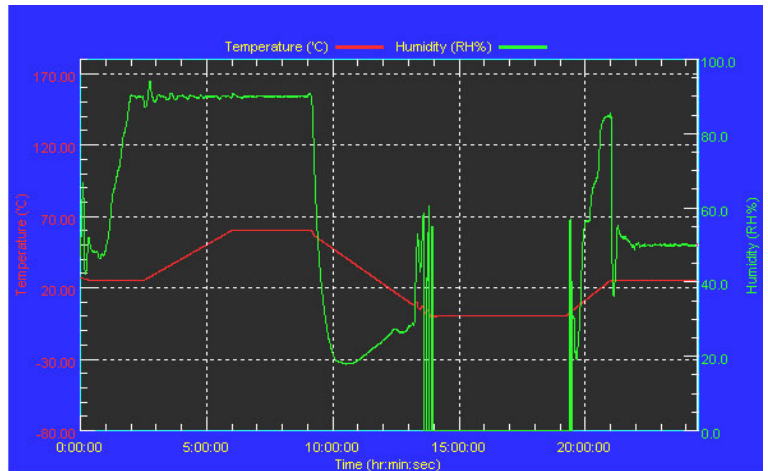
Programmable Temperature & Humidity Chamber  
K.SON. INS. TECH. CORP.  
Model: THS-D4L+-100  
Date of Calibration: 11/06/07  
Serial Number: 2582

**Temperature & Humidity Power On/Off Test:**

**Testing Specification:**

Step	Temperature (°C)	Humidity (%RH)	Duration (HH:MM)
1	25	50	00:30
2	25	50	00:30
3	25	90	01:00
4	25	90	00:30
5	60	90	03:30
6	60	90	03:00
7	0	0	04:50
8	0	0	05:23
9	25	50	01:47
10	25	50	03:00

**Test Curve:**



**Test Result:**

No problem was found during the temperature & humidity power on/off test.

**Test Date:** 12-16~17-2007

**Test Site:** AAEON QA Internal Lab.

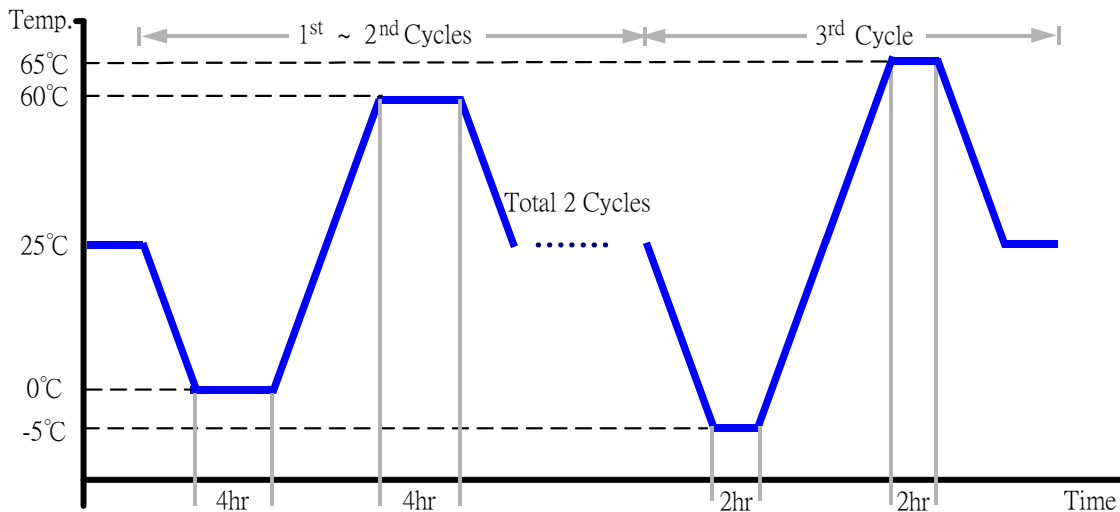
**Test Product:** EPIC-5536 A0.2 (Bios Ver. 5536\_06E)

**Test Standard:** Reference IEC 68-2-14 Testing procedures  
Test N: Change of temperature Test

**Test Equipment:**  
Programmable Temperature & Humidity Chamber  
K.SON. INS. TECH. CORP.  
Model: THS-D4H+-100  
Date of Calibration: 05/16/07  
Serial Number: 1241

### Temperature & Humidity Cycle Test:

1. Test Low Temperature: 0°C (1~2 cycles)  
-5°C (3<sup>rd</sup> cycle)
2. Test High Temperature: 60°C (1~3 cycles)  
65°C (3<sup>rd</sup> cycle)
3. Test dwell time: 4Hrs (1~2 cycles)  
2Hrs (3<sup>rd</sup> cycle)
4. Temperature slope: 2°C/min
5. Test cycle: 3 cycles
6. Test Environment Curve:



### Test Result:

No problem was found during the temperature variation operation test.

# Cold start and hot start test

**Test Date:** 12-17~18-2007

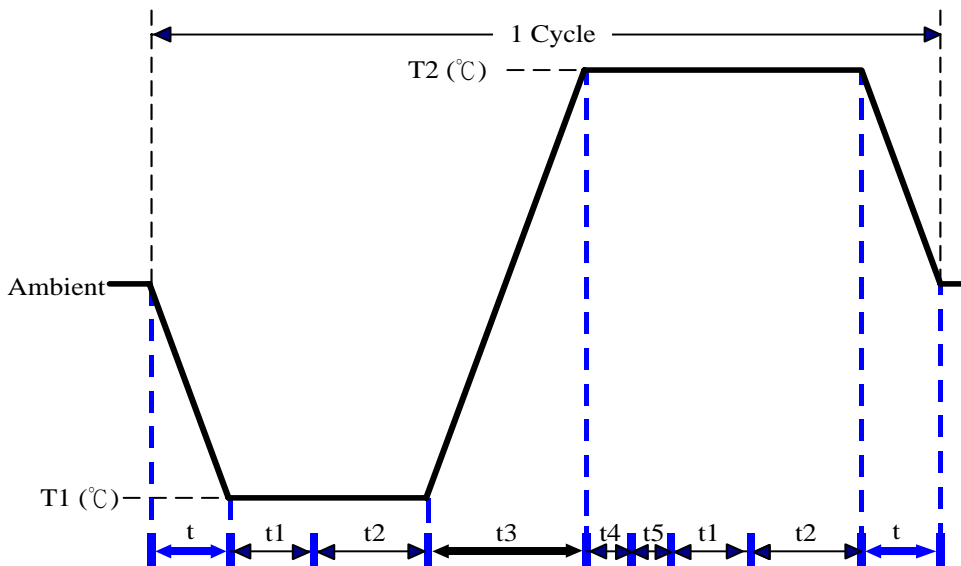
**Test Site:** AAEON QA Internal Lab.

**Test Product:** EPIC-5536 A0.2 (Bios Ver.EPIC-700S 0.52)

**Test Standard:** Reference IEC 68-2-14 Testing procedures  
Test N: Change of temperature Test

**Test Equipment:**  
Programmable Temperature & Humidity Chamber  
K.SON. INS. TECH. CORP.  
Model: THS-D4H+-100  
Date of Calibration: 05/16/07  
Serial Number: 1241

**Test Condition:**



Parameters	Description
T1	-5°C
T2	65°C
t1	1 hrs
t2	2 hrs
t4, t5	30 min
t, t3	2°C/min
n (Cycle)	1

t,t3 = temprature slope  
t, t1: Power Off  
t2: Power on/off test 10 times (on 2 min / off 5min)  
t3,t4: Run PassMark Burn In Test  
t5: Win XP Software restart test 2 times  
Test Software: Windows XP

**Test Result:**

- a. No problem was found during the cold start test.
- b. No problem was found during the hot start test.