

Test item list

- | | |
|--|---|
| 1. <i>Test item list</i> ----- | 2 |
| 2. <i>Configuration of EUT</i> ----- | 3 |
| 3. <i>Temp./humidity power on/off test</i> ----- | 4 |
| 4. <i>Temperature variation operation test</i> ----- | 5 |
| 5. <i>Cold start and hot start test</i> ----- | 6 |

Testing Result

Num	Test item list	Result	Remark
1	Temp./humidity power on/off test	Pass	
2	Temperature variation operation test	Pass	
3	Cold start and hot start test	Pass	

Configuration of EUT

Test Product: EMB-LN9T A0.2

Sample Configuration & Quantity Under Test:

1. CPU: Intel Pineview-D (D510) / 1.66GHz (Bios Ver.0.15)
2. Chipset: Intel Pineview-D (D510) / ICH8M
3. VGA: Intel Pineview-D (D510)
4. Memory:
SODIMM1 - DSL 1GB * 1 / ELPIDA E5108AG-6E-E (DDR2-667)
SODIMM2 - Transcend 1GB * 1 / SEC K4T51083QE (DDR2-667)
5. CFD: PQI 32MB
6. SATA HDD: Seagate ST380815AS / 80GB
7. Test Software: Windows XP / Run PassMark Burn In Test 6.0 Pro
8. AT Power Supply: Zippy SP2-4300F to ATX Mode
9. CPU Cooler:



Test Date: 08-20~21-2010

Test Site: AAEON QE Internal Lab.

Test Standard: Reference IEC 68-2-30 Testing procedures
Test Db: Damp Heat Test

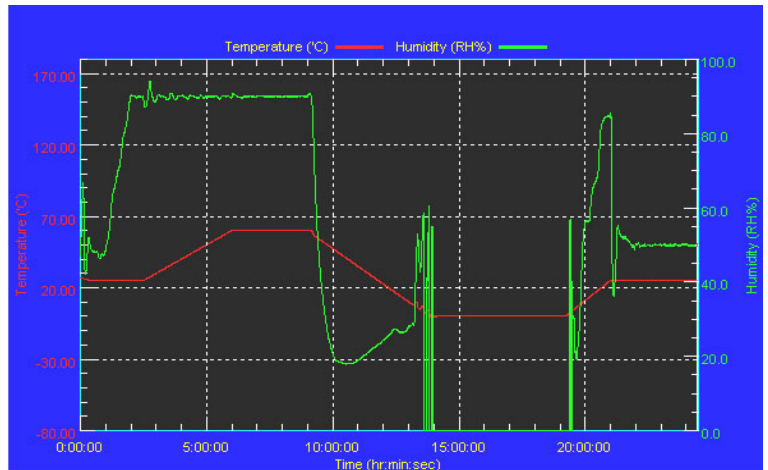
Test Equipment:
Programmable Temperature & Humidity Chamber
K.SON. INS. TECH. CORP.
Model: THS-D7S-100+1 N2
Date of Calibration: 12/08/09
Serial Number: 3898

Temperature & Humidity Power On/Off Test:

Testing Specification:

Step	Temperature (°C)	Humidity (%RH)	Duration (HH:MM)
1	25	50	00:30
2	25	50	00:30
3	25	90	01:00
4	25	90	00:30
5	60	90	03:30
6	60	90	03:00
7	0	0	04:50
8	0	0	05:23
9	25	50	01:47
10	25	50	03:00

Test Curve:



Test Result:

No problem was found during the temperature & humidity power on/off test.

Test Method	Actual	Successful	Failure rate	On time	Off Time
Power On/Off	1256/times	1256/times	0 %	37 Sec.	37 Sec.

Test Date: 08-19~20-2010

Test Site: AAEON QE Internal Lab.

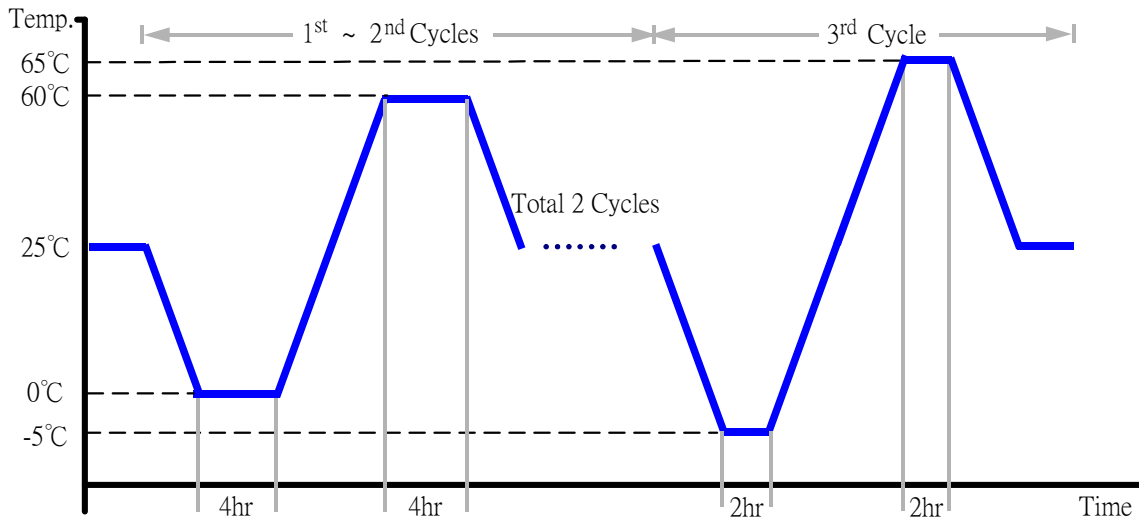
Test Standard: Reference IEC 68-2-14 Testing procedures
Test N: Change of temperature Test

Test Equipment:

Programmable Temperature & Humidity Chamber
K.SON. INS. TECH. CORP.
Model: THS-D7S-100+1 N2
Date of Calibration: 12/08/09
Serial Number: 3898

Temperature & Humidity Cycle Test:

1. Test Low Temperature: 0°C (1~2 cycles)
-5°C (3rd cycle)
2. Test High Temperature: 60°C (1~2 cycles)
65°C (3rd cycle)
3. Test dwell time: 4Hrs (1~2 cycles)
2Hrs (3rd cycle)
4. Temperature slope: 2°C/min
5. Test cycle: 3 cycles
6. Test Environment Curve:



Test Result:

No problem was found during the temperature variation operation test.

Cold start and hot start test

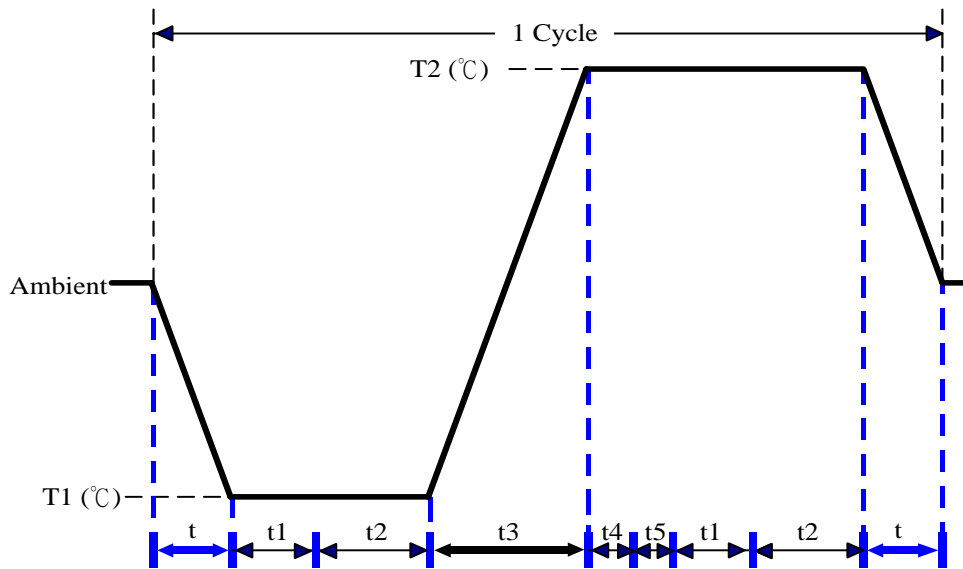
Test Date: 08-18~19-2010

Test Site: AAEON QE Internal Lab.

Test Standard: Reference IEC 68-2-14 Testing procedures
Test N: Change of temperature Test

Test Equipment:
Programmable Temperature & Humidity Chamber
K.SON. INS. TECH. CORP.
Model: THS-D7S-100+1 N2
Date of Calibration: 12/08/09
Serial Number: 3898

Test Condition:



Parameters	Description
T1	-5°C
T2	65°C
t1	1 hrs
t2	2 hrs
t4, t5	30 min
t, t3	2°C/min
n (Cycle)	1

t,t3 = temprature slope
t, t1: Power Off
t2: Power on/off test 10 times (on 2 min / off 5min)
t3,t4: Run PassMark Burn In Test
t5: Win XP Software restart test 2 times
Test Software: Windows XP

Test Result:

- a. No problem was found during the cold start test.
- b. No problem was found during the hot start test.