

EMB-BT2

Temperature/Humidity Test Report

Report NO: 14IP020011

Summary	<p><input checked="" type="checkbox"/> Pass</p> <p><input type="checkbox"/> Fail</p> <p>Note : There is/are ____ defect(s) not list in the report, please check it in the DTS Website.</p> <p><input type="checkbox"/> Pass with Deviation</p> <p>Comment: _____</p>
---------	--

Issue date	Approval	Test Engineer
2014-10-21	Tom Lin	Jerry Chen

Test item list

-
1. *Test item list* ----- 2
 2. *Configuration of EUT* ----- 3
 3. *Temp./humidity power on/off test* ----- 4
 4. *Temperature variation operation test* ----- 5
 5. *Cold start and hot start test* ----- 6

Testing Result

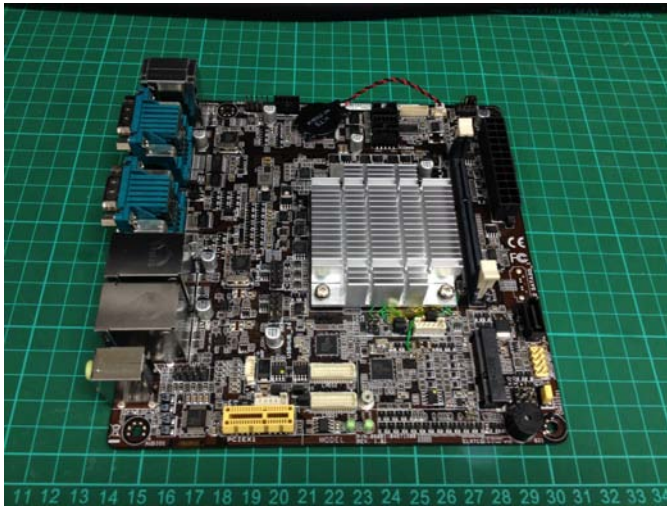
Num	Test item list	Result	Remark
1	Temp./humidity power on/off test	Pass	
2	Temperature variation operation test	Pass	
3	Cold start and hot start test	Pass	

Configuration of EUT

Test Product: EMB-BT2 Ver. R1.01

Sample Configuration & Quantity Under Test:

1. **CPU:** Intel Celeron J1900 1.99GHz
2. **BIOS Ver.:** R0.6(EBT2BT06) (09/01/2014)
3. **Memory:** Transcend DDR3L 1600 8GB (SEC / K4B4G0846D)
4. **USB Flash:** Transcend 2GB (For DOS Mode Power On/Off Test)
5. **2.5" SATA HDD:** WD / WD5000BPKX 500GB
6. **Test Software:** Windows 8 / Run PassMark Burn In Test 7.1Pro
7. **ATX Power Supply:** CWT / SDA400P-C
8. **CPU Heat Sink:**



Temp./humidity power on/off test

Test Date: 10-15 ~ 16-2014

Test Site: AAEON QE Dept.

Test Standard: Refer to IEC 68-2-30 Testing procedures
Test Db: Damp Heat Test

Test Equipment:

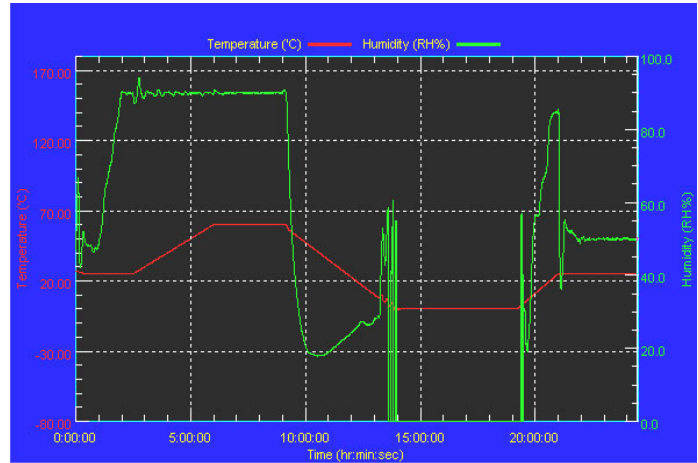
Programmable Temperature & Humidity Chamber: (K.SON. INS. TECH. CORP.)
Model: THS-D7S-100+1 N2
Date of Calibration: 10/09/'13
Serial Number: 3898

Temperature & Humidity Power On/Off Test:

Testing Specification:

Step	Temperature (°C)	Humidity (%RH)	Duration (HH:MM)
1	25	50	00:30
2	25	50	00:30
3	25	90	01:00
4	25	90	00:30
5	60	90	03:30
6	60	90	03:00
7	0	0	04:50
8	0	0	05:23
9	25	50	01:47
10	25	50	03:00

Test Curve:



Test Result:

Test Method	Actual	Successful	Failure rate
Power On/Off	1089/times	1089/times	0 %
Note: Failure rate need to under 0%.			

Temperature variation operation test

Test Date: 10-16 ~ 17-2014

Test Site: AAEON QE Dept.

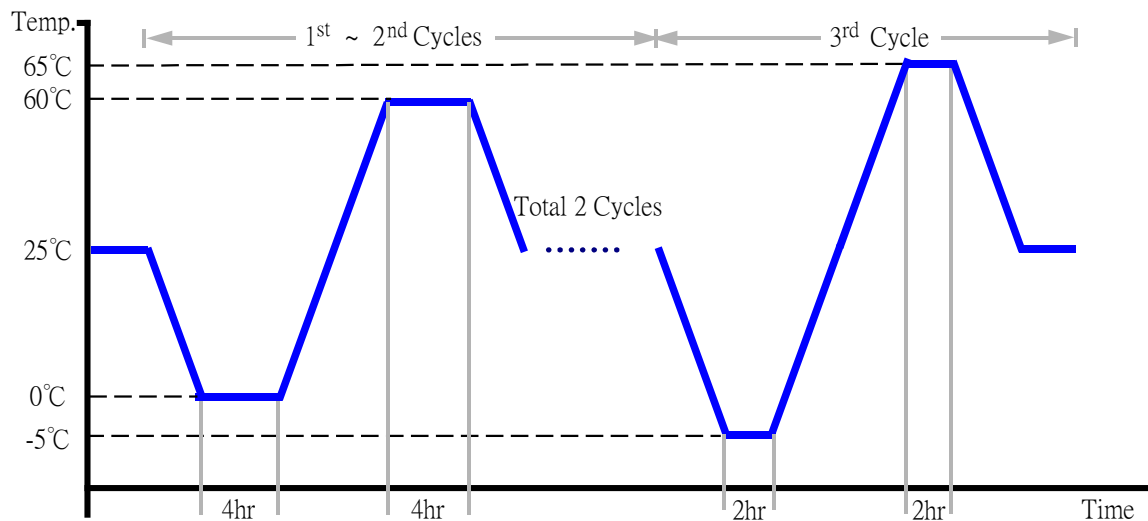
Test Standard: Refer to IEC 68-2-14 Testing procedures
Test N: Change of temperature Test

Test Equipment:

Programmable Temperature & Humidity Chamber: (K.SON. INS. TECH. CORP.)
Model: THS-D7S-100+1 N2
Date of Calibration: 10/09/'13
Serial Number: 3898

Temperature & Humidity Cycle Test:

1. Test Low Temperature: 0°C (1~2 cycles)
-5°C (3rd cycle)
2. Test High Temperature: 60°C (1~2 cycles)
65°C (3rd cycle)
3. Test dwell time: 4Hrs (1~2 cycles)
2Hrs (3rd cycle)
4. Temperature slope: 2°C/min
5. Test cycle: 3 cycles
6. Test Environment Curve:



Test Result:

No issues were found during the temperature variation operation test.

Cold start and hot start test

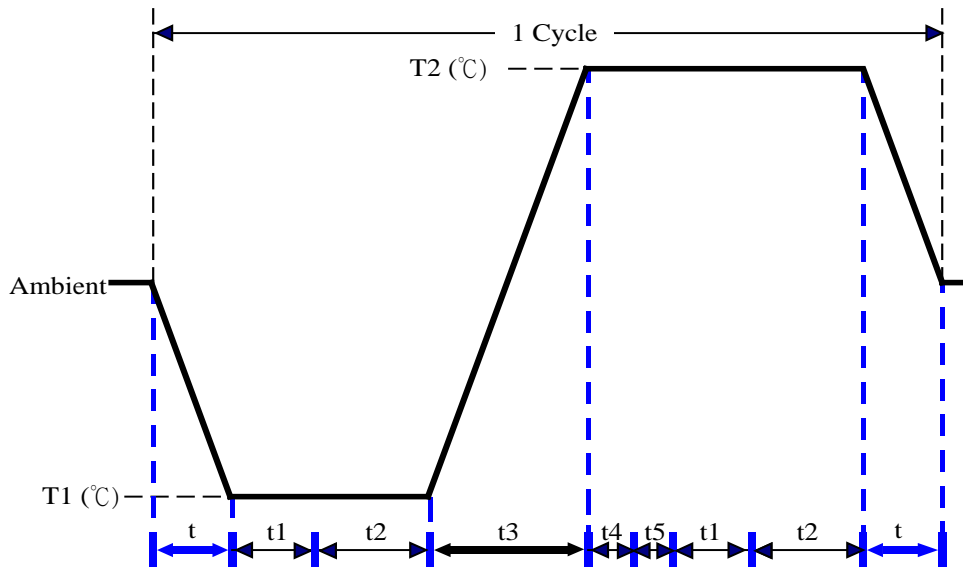
Test Date: 10-17 ~ 20-2014

Test Site: AAEON QE Dept.

Test Standard: Refer to IEC 68-2-14 Testing procedures
Test N: Change of temperature Test

Test Equipment:
Programmable Temperature & Humidity Chamber: (K.SON. INS. TECH. CORP.)
Model: THS-D7S-100+1 N2
Date of Calibration: 10/09/'13
Serial Number: 3898

Test Condition:



Parameters	Description
T1	-5°C
T2	65°C
t1	1 hrs
t2	2 hrs
t4, t5	30 min
t, t3	2°C/min
n (Cycle)	1

t,t3 = temprature slope
t, t1: Power Off
t2: Power on/off test 10 times (on 2 min / off 5min)
t3,t4: Run PassMark Burn In Test
t5: Windows 8 Software restart test 2 times
Test Software:Windows 8

Test Result:

- a. No issues were found during the cold start test.
- b. No issues were found during the hot start test.