

EMB-BSW1

Temperature/Humidity Test Report

Report NO: 16IP020003

Summary	<p><input type="checkbox"/> Pass</p> <p><input type="checkbox"/> Fail</p> <p><input checked="" type="checkbox"/> Pass with Deviation</p> <p>Comment:</p> <p>(1). The EMB-BSW1 can not to display boot screen, when the EMB-BSW1 use ASUS monitor (Model No.: VS247, VS228) and Dell monitor (Model No.: UZ2315Hf) in 25°C working environmental. Therefore monitor change to use ASUS monitor (Model No.: PA238), It is able to display the boot screen.</p> <p>(2). The Network 1 & 2 test failed, when LAN load is setting on 100% with run PassMark Burn In Test 8.1 Pro in 25°C working environmental. Error message show “Timeout waiting for packet”. Therefore change the LAN load 100% to 99% and then after run the PassMark Burn In Test again during the temperature variation operation test, test result was pass.</p> <p>(3). The Sound test option failed during the temperature variation operation test (Run PassMark Burn In Test 8.1 Pro). Error message shows “ Failed to play back MIDI via sequencer”. Therefore install the Realtek audio driver (Driver Version: 6.0.1.7765) with setting power options (change to high performance) and then after run PassMark Burn In Test again during the temperature variation operation test, test result was pass.</p>
---------	--

Issue date

2016-03-29

Approval

KJ Wang

Test Engineer

Jerry Chen

Test item list

-
1. *Test item list* ----- 2
 2. *Configuration of EUT* ----- 3
 3. *Temp./humidity power on/off test* ----- 4
 4. *Temperature variation operation test* ----- 5
 5. *Cold start and hot start test* ----- 6

Testing Result

Num	Test item list	Result	Remark
1	Temp./humidity power on/off test	Pass	
2	Temperature variation operation test	Pass	
3	Cold start and hot start test	Pass	

Configuration of EUT

Test Product: EMB-BSW1 R1.02

Sample Configuration & Quantity Under Test:

1. CPU: Intel Pentium N3710 1.6 GHz
2. BIOS Ver. R1.3 (EBW1AM13) (03/07/2016)
3. Chipset: Intel Braswell
4. Memory: Transcend DDR3L 1600 SO 4GB (SEC / K4B4G0846B) *2
5. USB Flash: Transcend 8 GB (For DOS Mode Power On/Off Test)
6. 2.5" SATA SSD: OCZ / TRN100-25SAT3-240G 240GB
7. Test Software: Windows 8 / Run PassMark Burn In Test 8.1 Pro
8. AT Power Supply: Zippy HG2-6400P / 400W
9. Heat Sink:



Temp./humidity power on/off test

Test Date: 03-23 ~ 24-2016

Test Site: AAEON QE Dept.

Test Standard: Refer to IEC 68-2-30 Testing procedures
 Test Db: Damp Heat Test
 Refer to IEC 68-2-1 Testing procedures
 Test Ad: Cold Test

Test Equipment:

Programmable Temperature & Humidity Chamber: (K.SON. INS. TECH. CORP.)
 Model: THS-D7TS-100+LN2
 Date of Calibration: 23/04/2015
 Due date of Calibration: 22/04/2016
 Serial Number: A0445

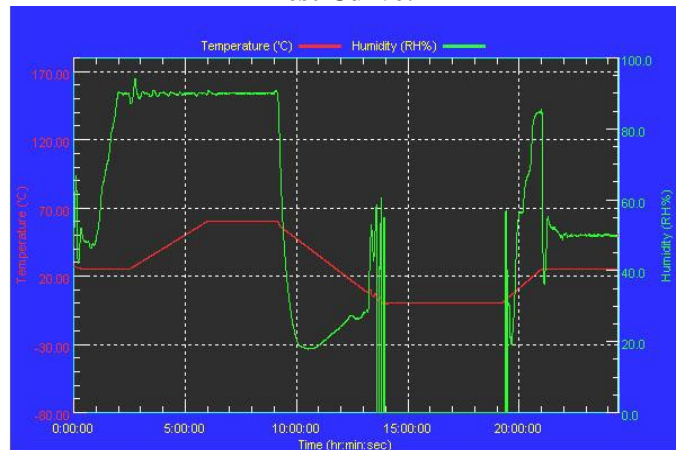
Temperature & Humidity Power On/Off Test:

1. Test High Temp./Humidity: 60°C @90%RH
2. Test Low Temperature: 0°C
3. Test Time: 24Hours / Cycle
4. Test Cycle: 1 Cycles
5. Test Software: DOS Mode / Run Boot Up Record Program ver 1.41

Testing Specification:

Step	Temperature (°C)	Humidity (%RH)	Duration (HH:MM)
1	25	50	00:30
2	25	50	00:30
3	25	90	01:00
4	25	90	00:30
5	60	90	03:30
6	60	90	03:00
7	0	0	04:50
8	0	0	05:23
9	25	50	01:47
10	25	50	03:00

Test Curve:



Test Result:

	Actual	Successful	Failure rate	Test Result
Power On/Off	1947/times	1947/times	0 %	Pass

Note: 1. Failure rate need to under 0%.
 2. Power on/off fixture setting: on - 37 sec / off - 5 sec

Temperature variation operation test

Test Date: 03-25 ~ 28-2016

Test Site: AAEON QE Dept.

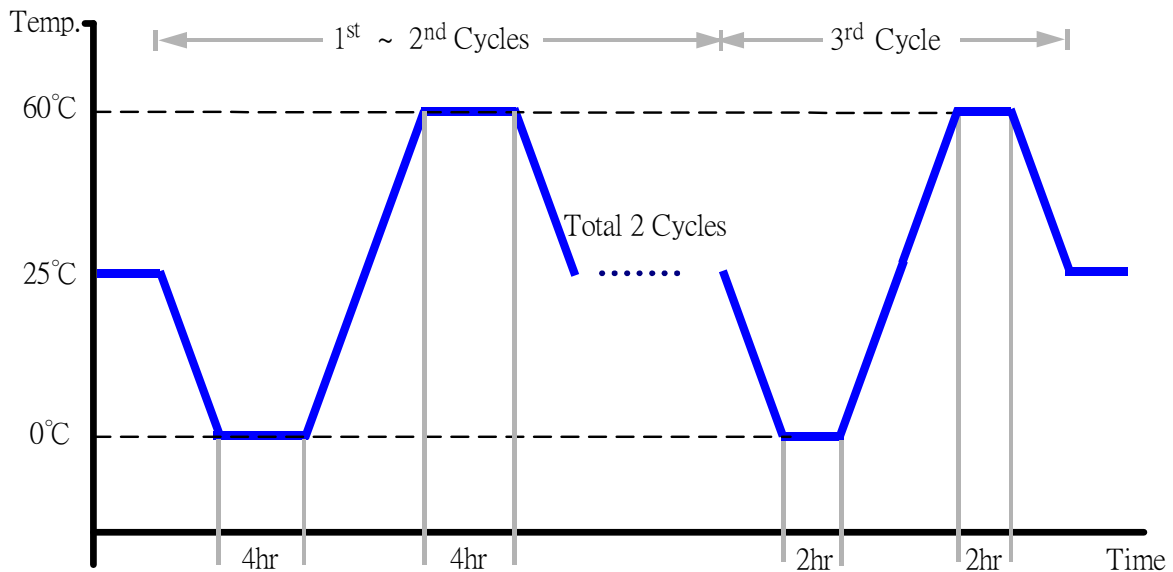
Test Standard: Refer to IEC 68-2-14 Testing procedures
Test N: Change of temperature Test

Test Equipment:

Programmable Temperature & Humidity Chamber: (K.SON. INS. TECH. CORP.)
Model: THS-D7TS-100+LN2
Date of Calibration: 23/04/2015
Due date of Calibration: 22/04/2016
Serial Number: A0445

Temperature & Humidity Cycle Test:

1. Test Low Temperature: 0°C (1~3 cycles)
2. Test High Temperature: 60°C (1~3 cycles)
3. Test dwell time: 4Hrs (1~2 cycles)
2Hrs (3rd cycle)
4. Temperature slope: 2°C/min
5. Test cycle: 3 cycles
6. Test Environment Curve:



Test Result:

No issues were found during the temperature variation operation test.

Cold start and hot start test

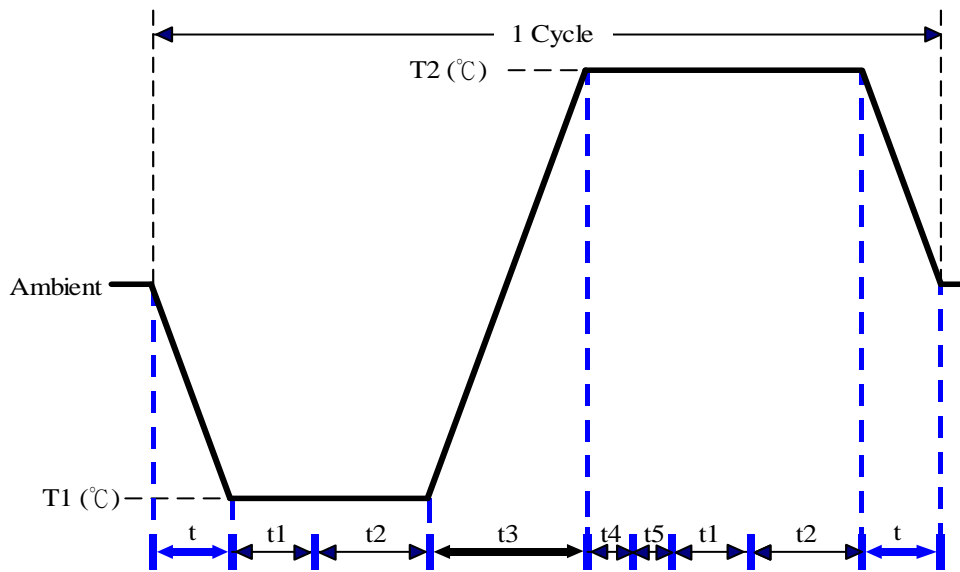
Test Date: 03-24 ~ 25-2016

Test Site: AAEON QE Dept.

Test Standard: Refer to IEC 68-2-14 Testing procedures
Test N: Change of temperature Test

Test Equipment:
Programmable Temperature & Humidity Chamber: (K.SON. INS. TECH. CORP.)
Model: THS-D7TS-100+LN2
Date of Calibration: 23/04/2015
Due date of Calibration: 22/04/2016
Serial Number: A0445

Test Condition:



Parameters	Description
T1	0°C
T2	60°C
t1	1 hrs
t2	2 hrs
t4, t5	30 min
t, t3	2°C/min
n (Cycle)	1

t,t3 = temperature slope
t, t1: Power Off
t2: Power on/off test 10 times (on 2 min / off 5min)
t3,t4: Run PassMark Burn In Test
t5: Windows 8 Software restart test 2 times
Test Software: Windows 8

Test Result:

- a. No issues were found during the cold start test.
- b. No issues were found during the hot start test.