

Test item list

- | | |
|--|---|
| 1. <i>Test item list</i> ----- | 2 |
| 2. <i>Configuration of EUT</i> ----- | 3 |
| 3. <i>Temp./humidity power on/off test</i> ----- | 4 |
| 4. <i>Temperature variation operation test</i> ----- | 5 |
| 5. <i>Cold start and hot start test</i> ----- | 6 |

Testing Result

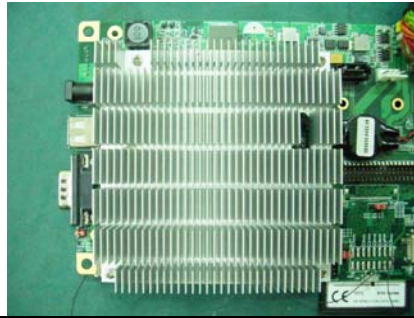
Num	Test item list	Result	Remark
1	Temp./humidity power on/off test	Pass	
2	Temperature variation operation test	Pass	
3	Cold start and hot start test	Pass	

Configuration of EUT

Test Product: COM-U15 A2.0 + ECB-951D A1.0

Sample Configuration & Quantity Under Test:

1. CPU: Intel Atom Z530 /1.6GHz (Bios Ver.2.0)
2. Chipset: Intel SU15W
3. VGA: Intel SU15W
4. Memory: Transcend1GB / ELIPDA E51D8AJBG (DDR2-667)
5. SATA HDD: Fujitsu MHY2080BH / 80GB
6. Test Software: Windows XP / Run PassMark Burn In Test Pro 4.0
7. Carrier Board:ECB-951D A1.0
8. VGA Daughter Board: PER-V07B A1.0
9. Adapter: FSP FSP065-RAB (19V / 65W)
10. Heat Sink:



Test Date: 06-21~22-2010

Test Site: AAEON QE Internal Lab.

Test Standard: Reference IEC 68-2-30 Testing procedures
Test Db: Damp Heat Test

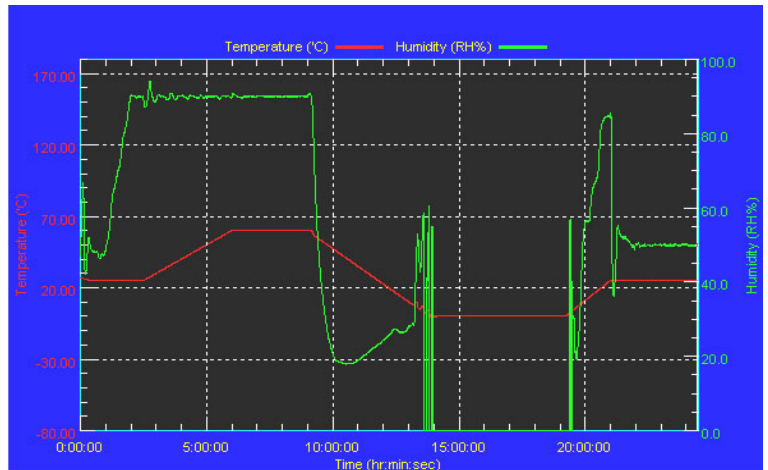
Test Equipment:
Programmable Temperature & Humidity Chamber
K.SON. INS. TECH. CORP.
Model: THS-A4C-100
Date of Calibration: 05/25/10
Serial Number: 3188

Temperature & Humidity Power On/Off Test:

Testing Specification:

Step	Temperature (°C)	Humidity (%RH)	Duration (HH:MM)
1	25	50	00:30
2	25	50	00:30
3	25	90	01:00
4	25	90	00:30
5	60	90	03:30
6	60	90	03:00
7	0	0	04:50
8	0	0	05:23
9	25	50	01:47
10	25	50	03:00

Test Curve:



Test Result:

No problem was found during the temperature & humidity power on/off test.

Test Method	Actual	Successful	Failure rate	On time	Off Time
Power On/Off	1295/times	1295/times	0 %	34 Sec.	34 Sec.
Note: Failure rate need to under 0.2%.					

Test Date: 06-22~23-2010

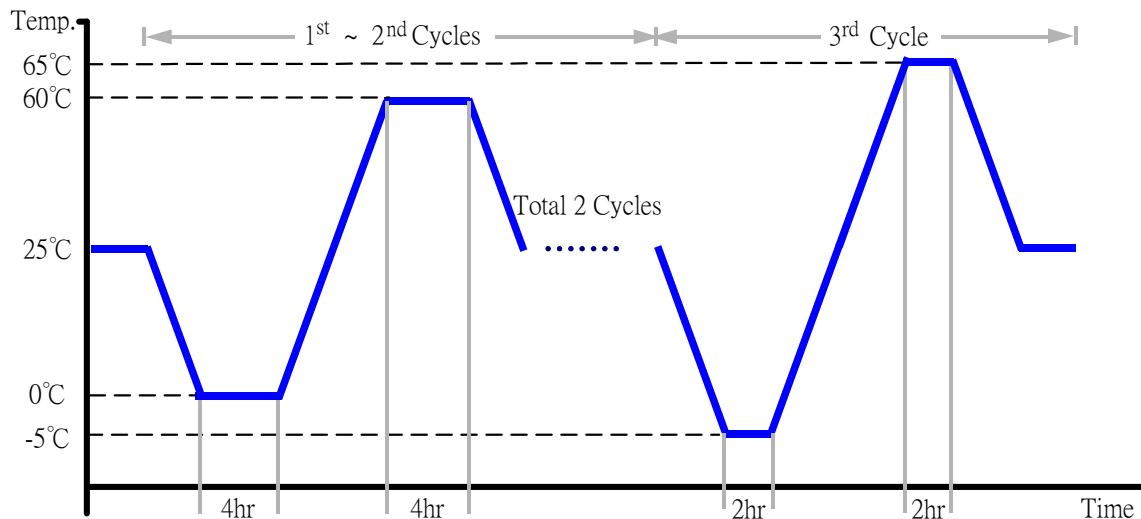
Test Site: AAEON QE Internal Lab.

Test Standard: Reference IEC 68-2-14 Testing procedures
Test N: Change of temperature Test

Test Equipment:
Programmable Temperature & Humidity Chamber
K.SON. INS. TECH. CORP.
Model: THS-A4C-100
Date of Calibration: 05/25/10
Serial Number: 3188

Temperature & Humidity Cycle Test:

1. Test Low Temperature: 0°C (1~2 cycles)
-5°C (3rd cycle)
2. Test High Temperature: 60°C (1~2 cycles)
65°C (3rd cycle)
3. Test dwell time: 4Hrs (1~2 cycles)
2Hrs (3rd cycle)
4. Temperature slope: 2°C/min
5. Test cycle: 3 cycles
6. Test Environment Curve:



Test Result:

No problem was found during the temperature variation operation test.

Cold start and hot start test

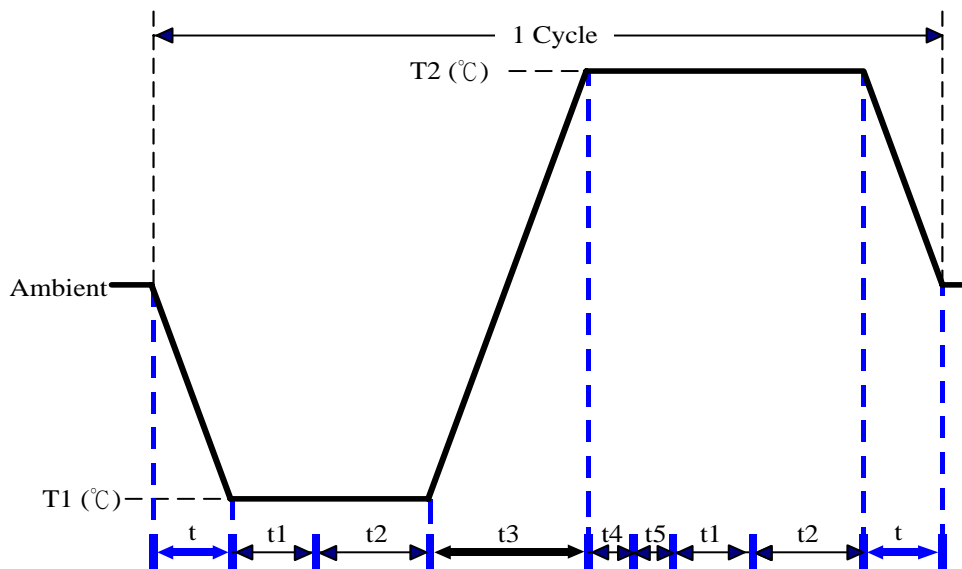
Test Date: 06-23~24-2010

Test Site: AAEON QE Internal Lab.

Test Standard: Reference IEC 68-2-14 Testing procedures
Test N: Change of temperature Test

Test Equipment:
Programmable Temperature & Humidity Chamber
K.SON. INS. TECH. CORP.
Model: THS-A4C-100
Date of Calibration: 05/25/10
Serial Number: 3188

Test Condition:



Parameters	Description
T1	-5°C
T2	65°C
t1	1 hrs
t2	2 hrs
t4, t5	30 min
t, t3	2°C/min
n (Cycle)	1

t,t3 = temprature slope
t, t1: Power Off
t2: Power on/off test 10 times (on 2 min / off 5min)
t3,t4: Run PassMark Burn In Test
t5: Win XP Software restart test 2 times
Test Software:Windows XP

Test Result:

- a. No problem was found during the cold start test.
- b. No problem was found during the hot start test.