

# COM-BYTC2

## Temperature/Humidity Test Report

Report NO: 16E020006

Summary	<input checked="" type="checkbox"/> <b>Pass</b>  <input type="checkbox"/> <b>Fail</b>  <input type="checkbox"/> <b>Pass with Deviation</b> Comment: _____
---------	--

Issue date

2016-04-27

QE Manager

KJ Wang

Test Engineer

Rex Chang

# Test item list

- 
1. *Test item list* ----- 2
  2. *Configuration of EUT* ----- 3
  3. *Temp./humidity power on/off test* ----- 4
  4. *Temperature variation operation test* ----- 5
  5. *Cold start and hot start test* ----- 6

## Testing Result

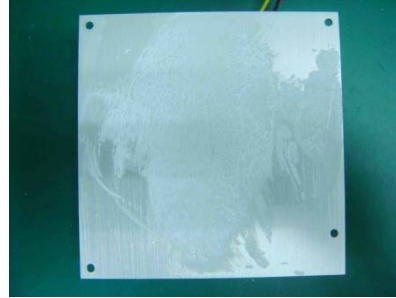
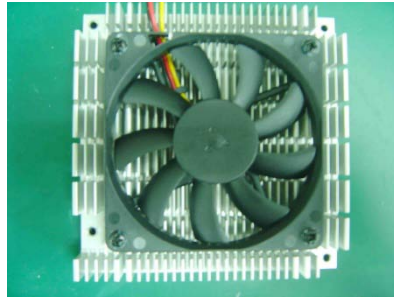
Num	Test item list	Result	Remark
1	Temp./humidity power on/off test	Pass	
2	Temperature variation operation test	Pass	
3	Cold start and hot start test	Pass	

# Configuration of EUT

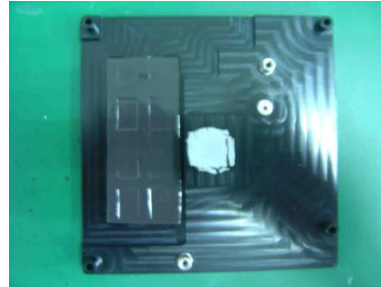
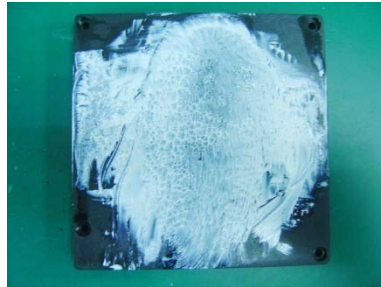
## Test Product: COM-BYTC2 A0.2

### Sample Configuration & Quantity Under Test:

1. CPU: Intel Celeron J1900 / 2GHz
2. BIOS Ver. COM-BYTC2 R0.7 (CMB2AL07)(03/21/2016) X64
3. Chipset: Intel Bay-Trial SOC
4. Memory: Transcend 8GB / DDR3L 1600 / SEC K484G0846D
5. USB Flash: Transcend 8GB (For DOS Mode Power On/Off Test)
6. 2.5" SATA HDD: TOSHIBA MK1676GSX / 160GB
7. Test Software: Windows 8 / Run PassMark Burn In Test 8.1 Pro
8. Carrier Board: ECB-916M Ver. B1.1
9. ATX Power Supply: CWT DSA400P-C
10. CPU Cooler.FAN+Heat Sink (P/N: 17592CV000)



11. Heat-Spreader (P/N: M16BT00000) + Thermal Pad



# Temp./humidity power on/off test

**Test Date:** 04-21 ~ 22-2016

**Test Site:** AAEON QE Dept.

**Test Standard:** Refer to IEC 68-2-30 Testing procedures  
 Test Db: Damp Heat Test  
 Refer to IEC 68-2-1 Testing procedures  
 Test Ad: Cold Test

**Test Equipment:**

Programmable Temperature & Humidity Chamber: (K.SON. INS. TECH. CORP.)  
 Model: THS-B6T-150+LN2  
 Date of Calibration: 06/04/15  
 Due date of Calibration: 06/03/16  
 Serial Number: 9095KT

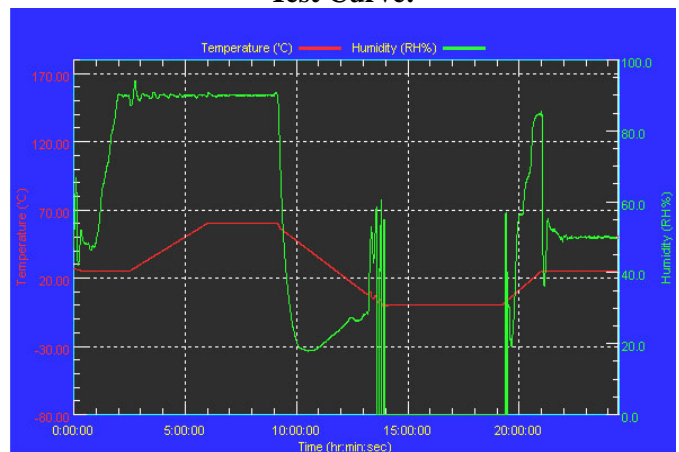
**Temperature & Humidity Power On/Off Test:**

1. Test High Temp./Humidity: 60°C @90%RH
2. Test Low Temperature: 0°C
3. Test Time: 24Hours / Cycle
4. Test Cycle: 1 Cycles
5. Test Software: DOS Mode / Run Boot Up Record Program ver 1.41

**Testing Specification:**

Step	Temperature (°C)	Humidity (%RH)	Duration (HH:MM)
1	25	50	00:30
2	25	50	00:30
3	25	90	01:00
4	25	90	00:30
5	60	90	03:30
6	60	90	03:00
7	0	0	04:50
8	0	0	05:23
9	25	50	01:47
10	25	50	03:00

**Test Curve:**



**Test Result:**

	Actual	Successful	Failure rate	Test Result
Power On/Off	1504/times	1504/times	0 %	Pass

**Note:** 1. Failure rate need to under 0%.  
 2. Power on/off fixture setting: on - 30 sec / off - 30 sec

# Temperature variation operation test

**Test Date:** 04-22 ~ 23-2016

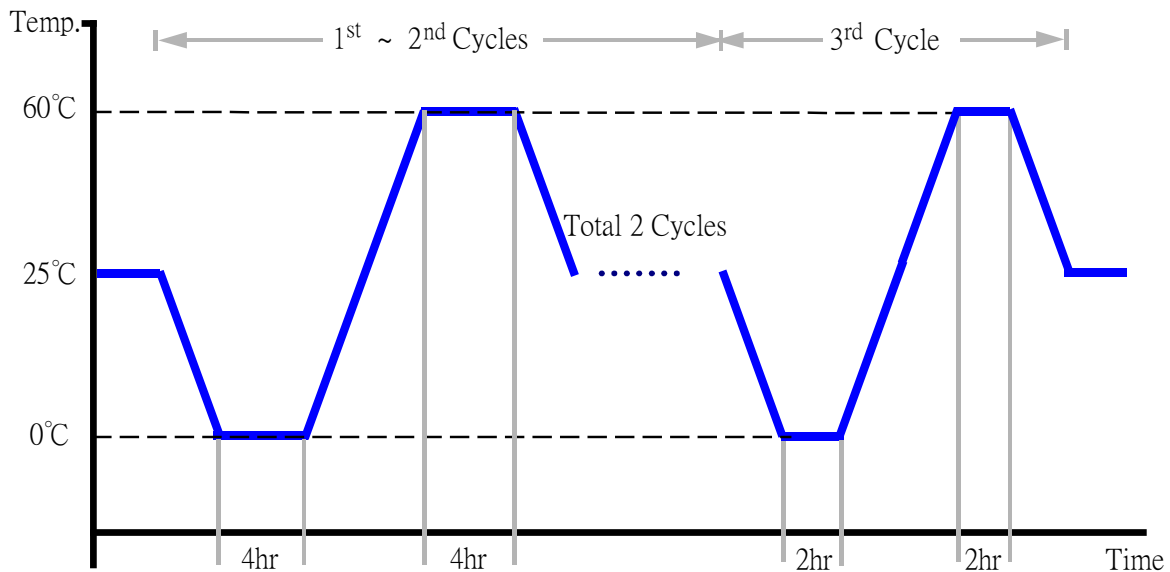
**Test Site:** AAEON QE Dept.

**Test Standard:** Refer to IEC 68-2-14 Testing procedures  
Test N: Change of temperature Test

**Test Equipment:**  
Programmable Temperature & Humidity Chamber: (K.SON. INS. TECH. CORP.)  
Model: THS-D4H+-100  
Date of Calibration: 10/09/15  
Due date of Calibration: 10/08/16  
Serial Number: 2582

## Temperature & Humidity Cycle Test:

1. Test Low Temperature: 0°C
2. Test High Temperature: 60°C
3. Test dwell time: 4Hrs (1~2 cycles)  
2Hrs (3<sup>rd</sup> cycle)
4. Temperature slope: 2°C/min
5. Test cycle: 3 cycles
6. Test Environment Curve:



## Test Result:

No issues were found during the temperature variation operation test.

# Cold start and hot start test

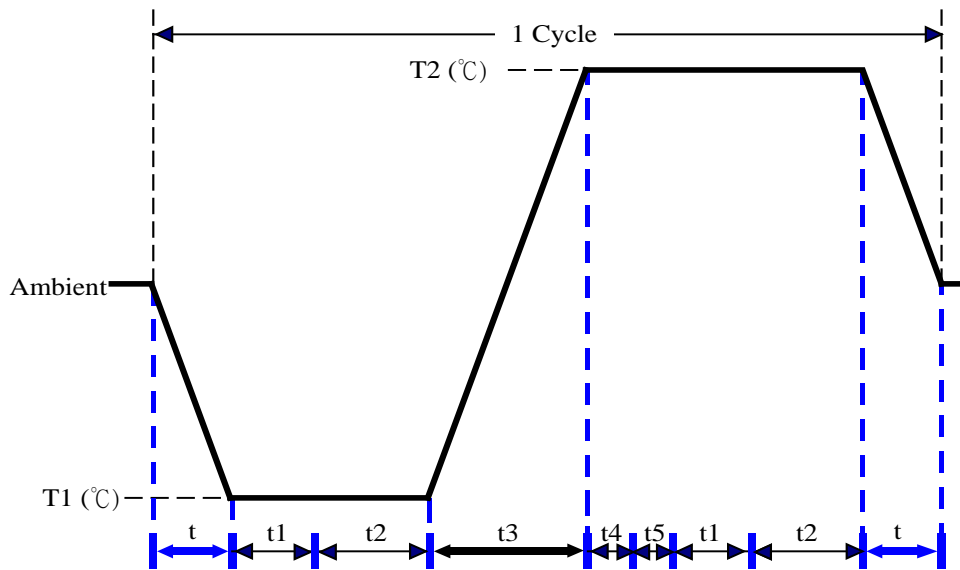
**Test Date:** 04-25 ~ 26-2016

**Test Site:** AAEON QE Dept.

**Test Standard:** Refer to IEC 68-2-14 Testing procedures  
Test N: Change of temperature Test

**Test Equipment:**  
Programmable Temperature & Humidity Chamber: (K.SON. INS. TECH. CORP.)  
Model: THS-D4H+-100  
Date of Calibration: 10/09/15  
Due date of Calibration: 10/08/16  
Serial Number: 2582

**Test Condition:**



Parameters	Description
T1	0°C
T2	60°C
t1	1 hrs
t2	2 hrs
t4, t5	30 min
t, t3	2°C/min
n (Cycle)	1

t,t3 = temperature slope  
t, t1: Power Off  
t2: Power on/off test 10 times (on 2 min / off 5min)  
t3,t4: Run PassMark Burn In Test  
t5: Windows 8 Software restart test 2 times  
Test Software: Windows 8

**Test Result:**

- No issues were found during the cold start test.
- No issues were found during the hot start test.