

# COM-BT

## Temp./Humidity Test Report

Report NO: 14E020008

Summary	<p><input type="checkbox"/> Pass</p> <p><input type="checkbox"/> Fail</p> <p>Note : There is/are ___ defect(s) not list in the report, please check it in the DTS Website.</p> <p><input checked="" type="checkbox"/> Pass with Deviation</p> <p>Comment: <u>COM Port defected a Receive Over run Error, ITE Vender Reply: It can be a limitation for ITE8528 Serial Ports. Because it doesn't have extend buffer.</u></p>
---------	--

Issue date

2014-08-11

Approval

Tom Lin

Test Engineer

Rex Chang

# Test item list

- 
1. *Test item list* ----- 2
  2. *Configuration of EUT* ----- 3
  3. *Temp./humidity power on/off test* ----- 4
  4. *Temperature variation operation test* ----- 5
  5. *Cold start and hot start test* ----- 6

## Testing Result

Num	Test item list	Result	Remark
1	Temp./humidity power on/off test	Pass	
2	Temperature variation operation test	Pass	
3	Cold start and hot start test	Pass	

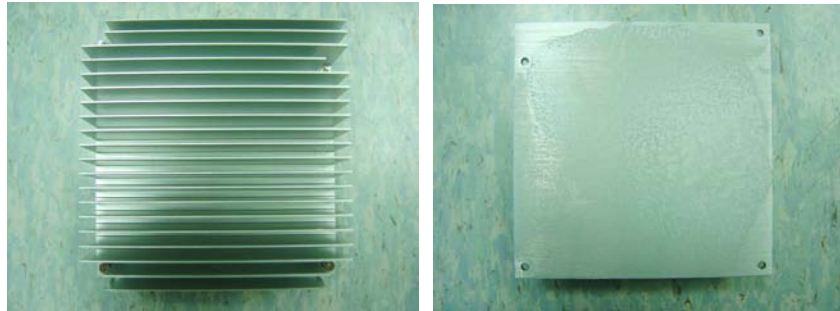
# Configuration of EUT

## Test Product: COM-BT A0.3 + ECB-920A A0.3

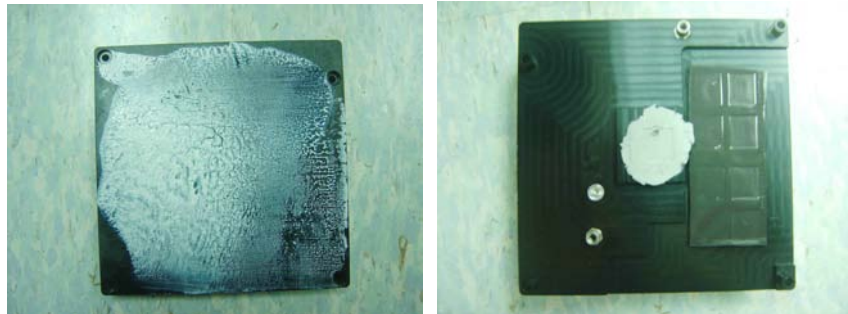
### Sample Configuration & Quantity Under Test:

1. CPU: Intel Celeron J1900 / 1.99GHz
2. BIOS Ver. COM-BT R0.C (CMBTAM0C) (07/30/2014) x64
3. Chipset: Intel BT
4. Memory: Innodisk 8G / DDR3 1333 / SAMSUNG K4B4G1646D-BYKO
5. USB Flash: Transcend 4GB (For DOS Mode Power On/Off Test Only)
6. 2.5" SATA HDD: Toshiba MK1676GSX / 160GB
7. Test Software: Windows 8 / Run PassMark Burn In Test 7.1 Pro
8. Carrier Board: ECB-920A A0.3
9. ATX Power Supply: CWT DSA400P-C
10. Heat Sink / Heat-Spreader:

Heat sink(P/N: M16CV00010)



Heat-Spreader (P/N: M16BT00000) and Thermal Pad



# Temp./humidity power on/off test

**Test Date:** 08-04 ~ 05-2014

**Test Site:** AAEON QE Dept.

**Test Standard:** Refer to IEC 68-2-30 Testing procedures  
Test Db: Damp Heat Test

**Test Equipment:**

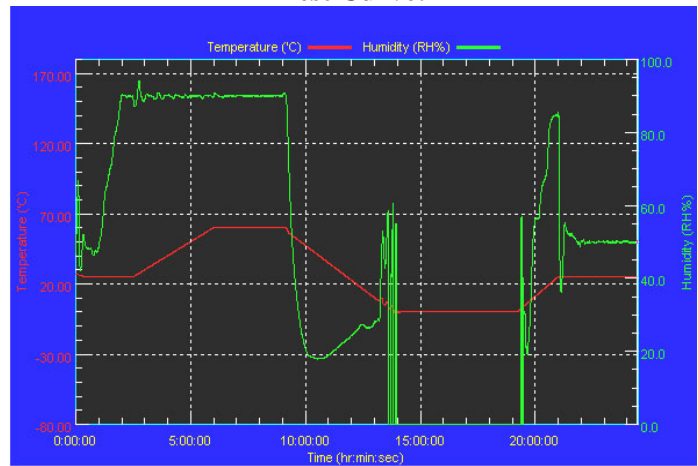
Programmable Temperature & Humidity Chamber (K.SON. INS. TECH. CORP.)  
Model: THS-B6T-150+LN2  
Date of Calibration: 03/07/14  
Serial Number: 6488KT

**Temperature & Humidity Power On/Off Test:**

**Testing Specification:**

Step	Temperature (°C)	Humidity (%RH)	Duration (HH:MM)
1	25	50	00:30
2	25	50	00:30
3	25	90	01:00
4	25	90	00:30
5	60	90	03:30
6	60	90	03:00
7	0	0	04:50
8	0	0	05:23
9	25	50	01:47
10	25	50	03:00

**Test Curve:**



**Test Result:**

Test Method	Actual	Successful	Failure rate
Power On/Off	969/times	969/times	0 %
Note: Failure rate need to 0%.			

# Temperature variation operation test

**Test Date:** 08-05 ~ 06-2014

**Test Site:** AAEON QE Dept.

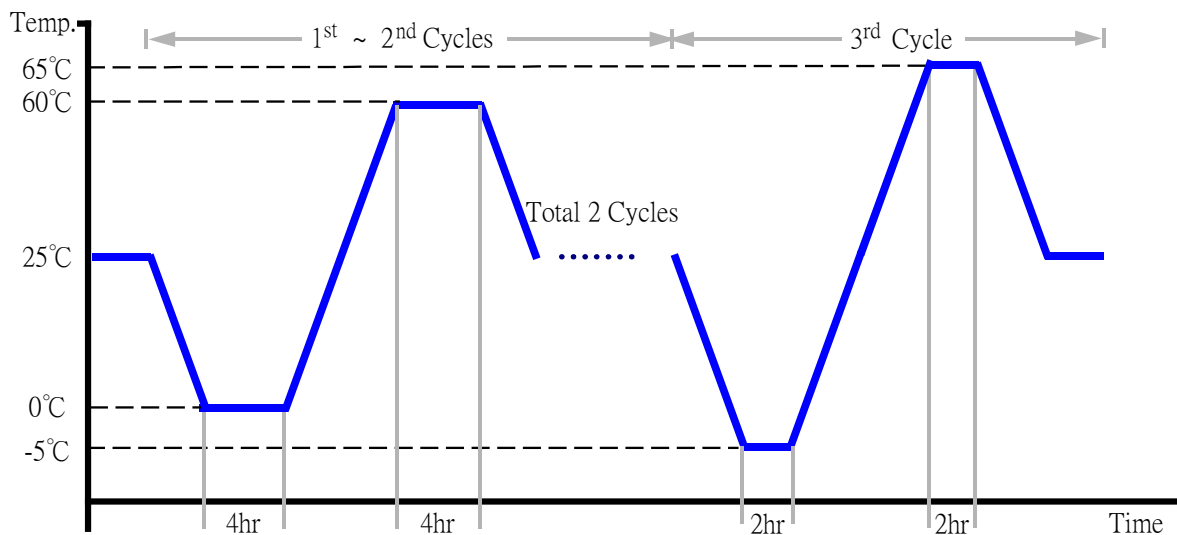
**Test Standard:** Refer to IEC 68-2-14 Testing procedures  
Test N: Change of temperature Test

**Test Equipment:**

Programmable Temperature & Humidity Chamber (K.SON. INS. TECH. CORP.)  
Model: THS-B6T-150+LN2  
Date of Calibration: 03/07/14  
Serial Number: 6488KT

**Temperature & Humidity Cycle Test:**

1. Test Low Temperature: 0°C (1~2 cycles)  
-5°C (3<sup>rd</sup> cycle)
2. Test High Temperature: 60°C (1~2 cycles)  
65°C (3<sup>rd</sup> cycle)
3. Test dwell time: 4Hrs (1~2 cycles)  
2Hrs (3<sup>rd</sup> cycle)
4. Temperature slope: 2°C/min
5. Test cycle: 3 cycles
6. Test Environment Curve:



**Test Result:**

No issues were found during the temperature variation operation test.

# Cold start and hot start test

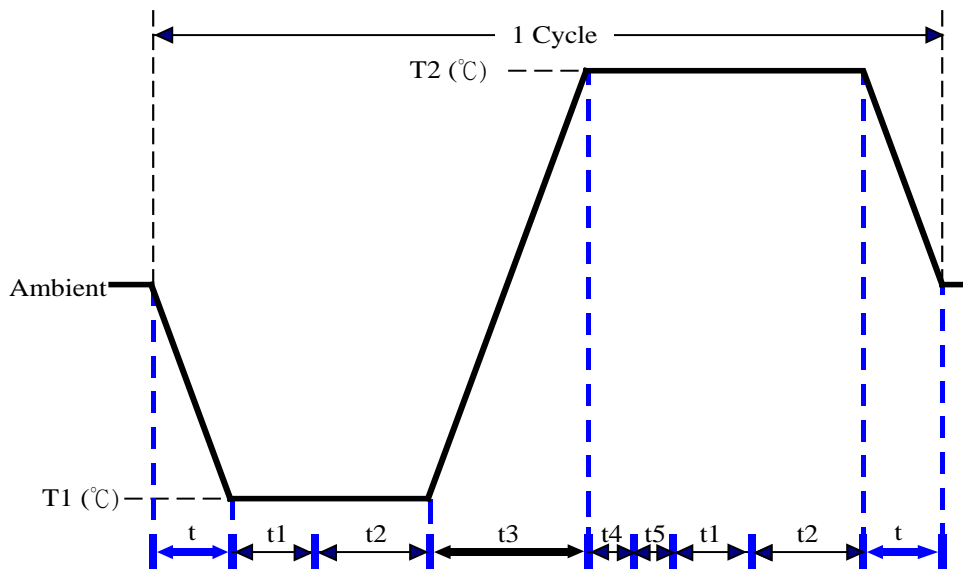
**Test Date:** 08-06 ~ 07-2014

**Test Site:** AAEON QE Dept.

**Test Standard:** Refer to IEC 68-2-14 Testing procedures  
Test N: Change of temperature Test

**Test Equipment:**  
Programmable Temperature & Humidity Chamber (K.SON. INS. TECH. CORP.)  
Model: THS-B6T-150+LN2  
Date of Calibration: 03/07/14  
Serial Number: 6488KT

**Test Condition:**



Parameters	Description
T1	-5°C
T2	65°C
t1	1 hrs
t2	2 hrs
t4, t5	30 min
t, t3	2°C/min
n (Cycle)	1

t, t3 = temperature slope  
t, t1: Power Off  
t2: Power on/off test 10 times (on 2 min / off 5min)  
t3, t4: Run PassMark Burn In Test  
t5: Windows 7 Software restart test 2 times  
Test Software: Windows 7

**Test Result:**

- a. No issues were found during the cold start test.
- b. No issues were found during the hot start test.