

COM-BT

Ver. A3.0

Temp./Humidity Test Report

Report NO: 18E020007

Summary	<p><input type="checkbox"/> Pass</p> <p><input type="checkbox"/> Fail</p> <p>Note : There is/are ____ defect(s) not list in the report, please check it in the DTS Website.</p> <p><input checked="" type="checkbox"/> Pass with Deviation</p> <p>Comment: <u>COM Port defected a Receive Over run Error, ITE Vender Reply: It can be a limitation for ITE8528 Serial Ports. Because it doesn't have extend buffer.</u></p>
---------	---

Issue date

2018-06-20

Approval

KJ Wang

Test Engineer

Rex Chang

Test item list

-
1. *Test item list* ----- 2
 2. *Configuration of EUT* ----- 3
 3. *Temp./humidity power on/off test* ----- 4
 4. *Temperature variation operation test* ----- 5
 5. *Cold start and hot start test* ----- 6

Testing Result

Num	Test item list	Result	Remark
1	Temp./humidity power on/off test	Pass	
2	Temperature variation operation test	Pass	
3	Cold start and hot start test	Pass	

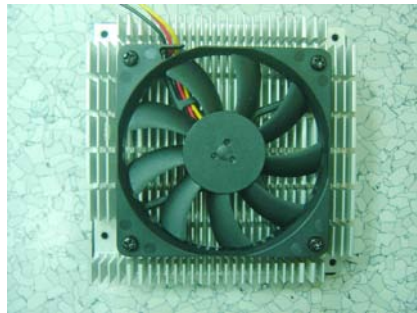
Configuration of EUT

Test Product: COM-BT A3.0 + ECB-920A A1.0

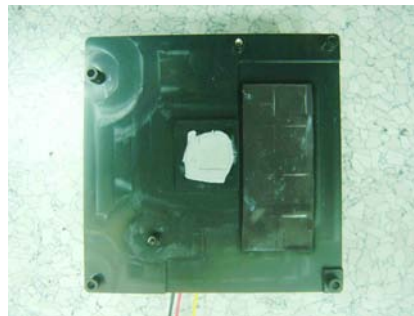
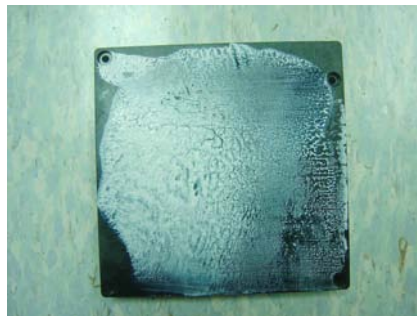
Sample Configuration & Quantity Under Test:

1. CPU: Intel Atom E3845 / 1.91GHz
2. BIOS Ver. COM-BT R1.2 (CMBTAM12) (04/09/2015)
3. Chipset: Intel BT
4. Memory: Innodisk 8G / DDR3 1333 / SK hynix H5TC4G83AFR PBA
5. USB Flash: Transcend 8GB (For DOS Mode Power On/Off Test Only)
6. 2.5" SATA SSD: Innodisk 3MG2-P / 64GB
7. Test Software: Windows 10 / Run PassMark Burn In Test 8.1 Pro(1003)
8. Carrier Board: ECB-920A A1.0
9. ATX Power Supply: CWT DSA400P-C
10. Cooler / Heat-Spreader:

Cooler



Heat-Spreader and Thermal Pad



Temp./humidity power on/off test

Test Date: 06-15 ~ 16-2018

Test Site: AAEON QE Dept.

Test Standard: Refer to IEC 68-2-30 Testing procedures
 Test Db: Damp Heat Test
 Refer to IEC 68-2-1 Testing procedures
 Test Ad: Cold Test

Test Equipment:

Programmable Temperature & Humidity Chamber: (K.SON. INS. TECH. CORP.)
 Model: THS-B6T-150+LN2
 Date of Calibration: 03/16/18
 Due date of Calibration: 03/15/19
 Serial Number: 6487KT

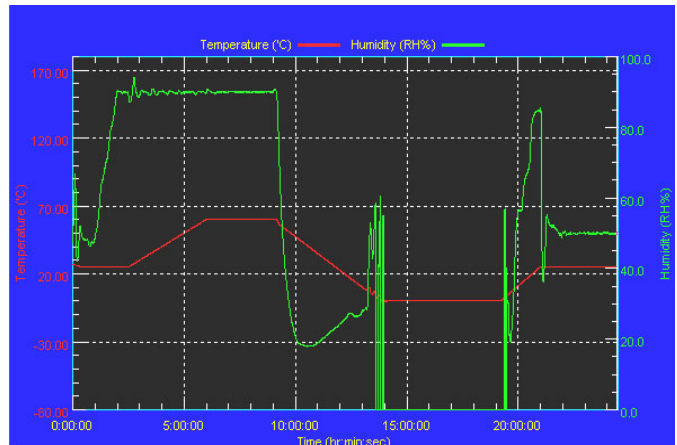
Temperature & Humidity Power On/Off Test:

1. Test High Temp./Humidity: 60°C @90% RH
2. Test Low Temperature: 0°C
3. Test Time: 24Hours / Cycle
4. Test Cycle: 1 Cycle
5. Test Software: DOS Mode / Run Boot Up Record Program ver 1.41

Testing Specification:

Step	Temperature (°C)	Humidity (%RH)	Duration (HH:MM)
1	25	50	00:30
2	25	50	00:30
3	25	90	01:00
4	25	90	00:30
5	60	90	03:30
6	60	90	03:00
7	0	0	04:50
8	0	0	05:23
9	25	50	01:47
10	25	50	03:00

Test Curve:



Test Result:

	Actual	Successful	Failure rate	Test Result
Power On/Off	1088/times	1088/times	0 %	

Note: 1. Failure rate need to under 0%.
 2. Power on/off fixture setting: on - 40 sec / off - 40 sec

Temperature variation operation test

Test Date: 06-18 ~ 19-2018

Test Site: AAEON QE Dept.

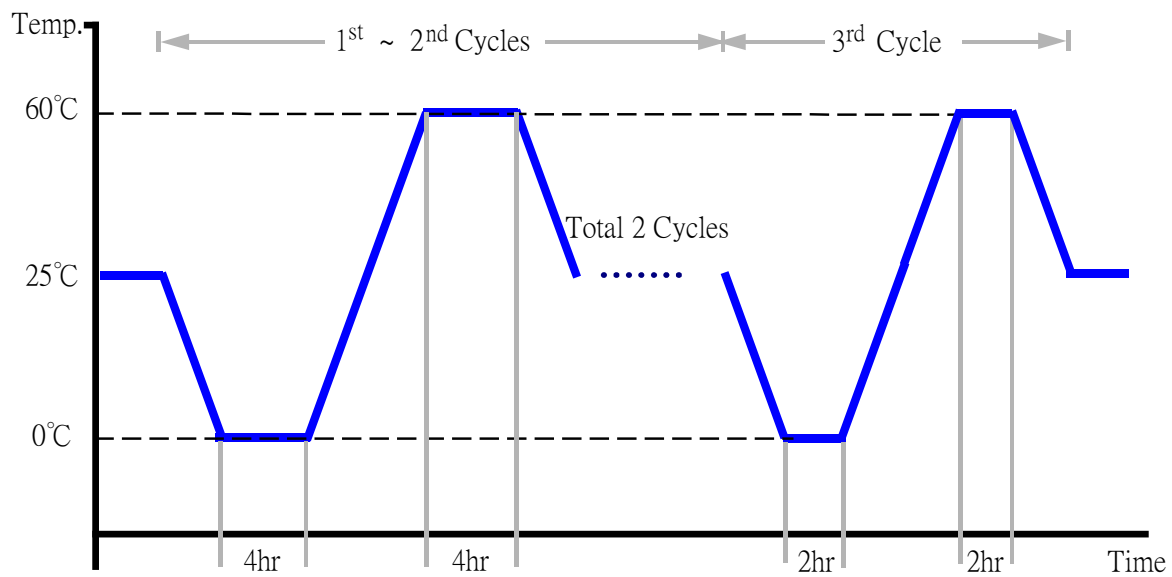
Test Standard: Refer to IEC 68-2-14 Testing procedures
Test N: Change of temperature Test

Test Equipment:

Programmable Temperature & Humidity Chamber: (K.SON. INS. TECH. CORP.)
Model: THS-B6T-150+LN2
Date of Calibration: 03/16/18
Due date of Calibration: 03/15/19
Serial Number: 6487KT

Temperature & Humidity Cycle Test:

1. Test Low Temperature: 0°C (1~3 cycles)
2. Test High Temperature: 60°C (1~3 cycles)
3. Test dwell time: 4Hrs (1~2 cycles)
2Hrs (3rd cycle)
4. Temperature slope: 2°C/min
5. Test cycle: 3 cycles
6. Test Environment Curve:



Test Result:

No issues were found during the temperature variation operation test.

Cold start and hot start test

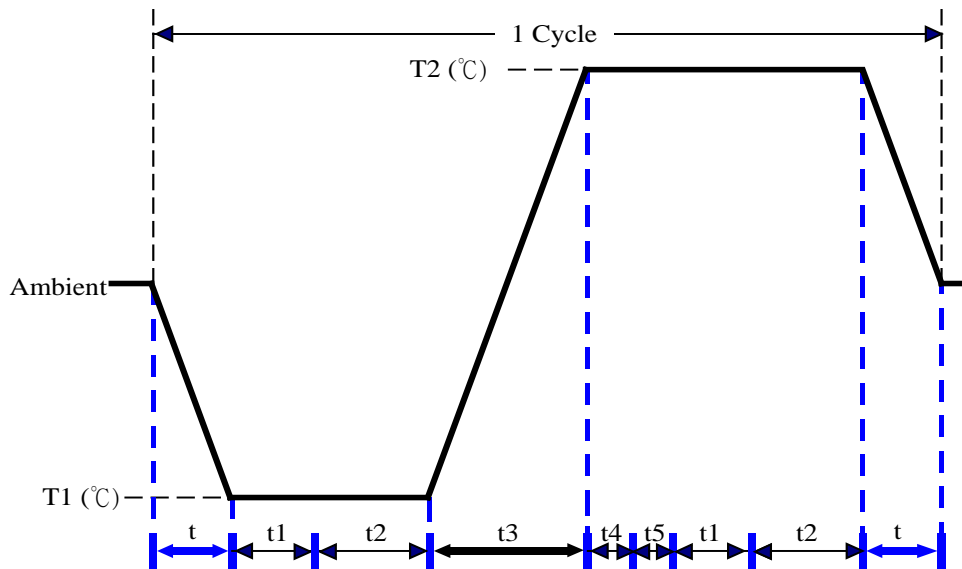
Test Date: 06-14 ~ 15-2018

Test Site: AAEON QE Dept.

Test Standard: Refer to IEC 68-2-14 Testing procedures
Test N: Change of temperature Test

Test Equipment:
 Programmable Temperature & Humidity Chamber: (K.SON. INS. TECH. CORP.)
 Model: THS-B6T-150+LN2
 Date of Calibration: 03/16/18
 Due date of Calibration: 03/15/19
 Serial Number: 6487KT

Test Condition:



Parameters	Description
T1	0°C
T2	60°C
t1	1 hrs
t2	2 hrs
t4, t5	30 min
t, t3	2°C/min
n (Cycle)	1

t,t3 = temperature slope
 t, t1: Power Off
 t2: Power on/off test 10 times (on 2 min / off 5min)
 t3,t4: Run PassMark Burn In Test
 t5: Windows 10 Software restart test 2 times
 Test Software: Windows 10

Test Result:

- a. No issues were found during the cold start test.
- b. No issues were found during the hot start test.