



*Industrial Computing Platform Partner*

# **COM-45SP**

## **Temperature/Humidity Test Report**

**Report NO: 08E020047**

**Issued by:          Rex Chang          /          10/02/2008**  
\_\_\_\_\_  
**Test Engineer          Date**

**Reviewed by:      Wenyuan Yang      /      10/02/2008**  
\_\_\_\_\_  
**Manager              Date**

# Test item list

1. <i>Test item list</i> -----	2
2. <i>Temp./humidity power on/off test</i> -----	3
3. <i>Temperature variation operation test</i> -----	4
4. <i>Cold start and hot start test</i> -----	5

## Test Product: COM-45SP A0.2 + EMB-916M A1.0

### Sample Configuration & Quantity Under Test:

1. CPU: Intel Core 2 Duo / T9400 / 2.53GHz CPU (Bios Ver.0.6)
2. Chipset: Intel GM45 / ICH9M
3. VGA: Intel GM45
4. Memory: DSL 2GB / SEC K4B1G0846D (DDR3-1066) \* 2
5. CFD: PQI 32MB
6. SATA HDD: Seagate ST380815AS / 80GB
7. Test Software: Windows XP / Run PassMark Burn In Test Pro 4.0
8. ATX Power Supply: Seventeam ST-350EAG-05G
9. CPU Cooler



# Temp./humidity power on/off test

**Test Date:** 09-27~28-2008

**Test Site:** AAEON QA Internal Lab.

**Test Standard:** Reference IEC 68-2-30 Testing procedures  
Test Db: Damp Heat Test

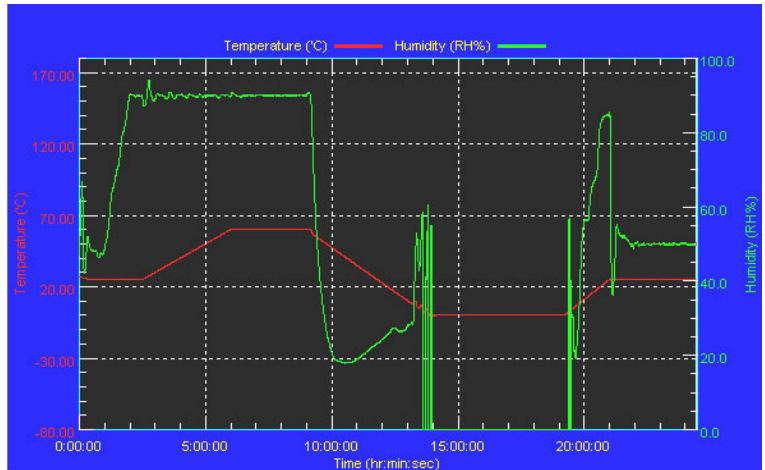
**Test Equipment:**  
Programmable Temperature & Humidity Chamber  
K.SON. INS. TECH. CORP.  
Model: THS-A4C-100  
Date of Calibration: 06/18/08  
Serial Number: 3188

## Temperature & Humidity Power On/Off Test:

### Testing Specification:

Step	Temperature (°C)	Humidity (%RH)	Duration (HH:MM)
1	25	50	00:30
2	25	50	00:30
3	25	90	01:00
4	25	90	00:30
5	60	90	03:30
6	60	90	03:00
7	0	0	04:50
8	0	0	05:23
9	25	50	01:47
10	25	50	03:00

### Test Curve:



### Test Result:

No problem was found during the temperature & humidity power on/off test.

**Test Date:** 09-30-2008 ~ 10-01-2008

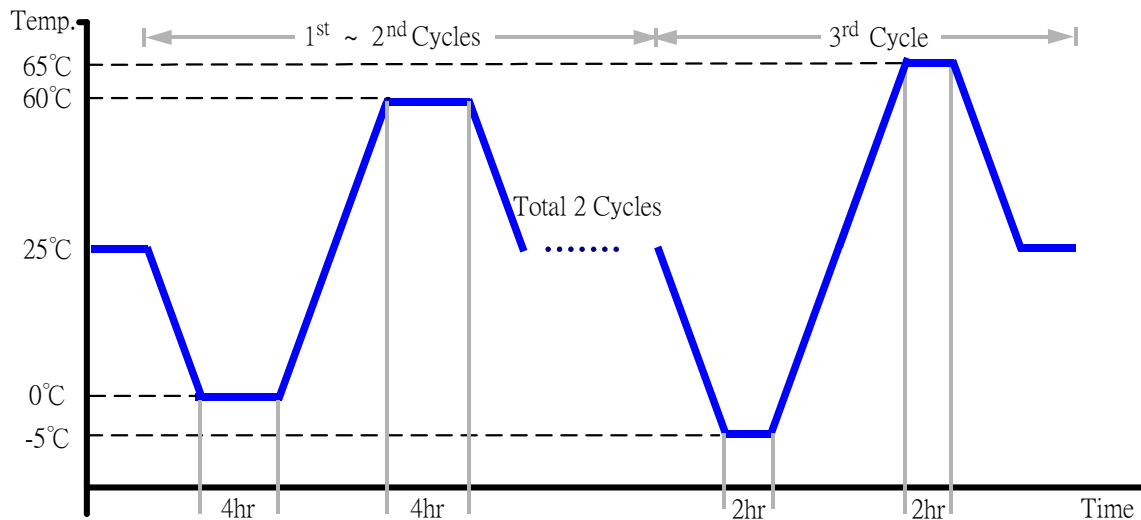
**Test Site:** AAEON QA Internal Lab.

**Test Standard:** Reference IEC 68-2-14 Testing procedures  
Test N: Change of temperature Test

**Test Equipment:**  
Programmable Temperature & Humidity Chamber  
K.SON. INS. TECH. CORP.  
Model: THS-A4C-100  
Date of Calibration: 06/18/08  
Serial Number: 3188

### Temperature & Humidity Cycle Test:

1. Test Low Temperature: 0°C (1~2 cycles)  
-5°C (3<sup>rd</sup> cycle)
2. Test High Temperature: 60°C (1~3 cycles)  
65°C (3<sup>rd</sup> cycle)
3. Test dwell time: 4Hrs (1~2 cycles)  
2Hrs (3<sup>rd</sup> cycle)
4. Temperature slope: 2°C/min
5. Test cycle: 3 cycles
6. Test Environment Curve:



### Test Result:

No problem was found during the temperature variation operation test.

# Cold start and hot start test

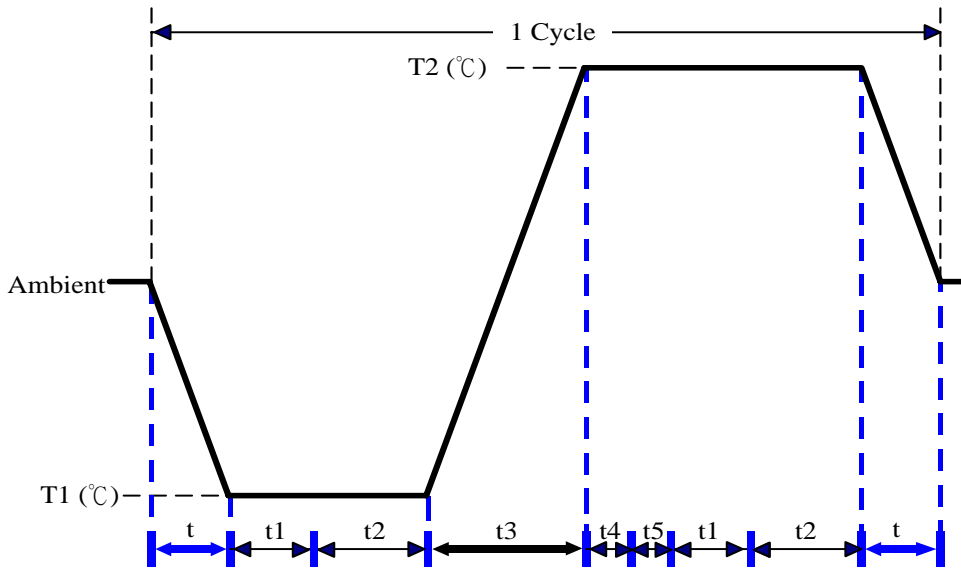
**Test Date:** 10-01-2008

**Test Site:** AAEON QA Internal Lab.

**Test Standard:** Reference IEC 68-2-14 Testing procedures  
Test N: Change of temperature Test

**Test Equipment:**  
Programmable Temperature & Humidity Chamber  
K.SON. INS. TECH. CORP.  
Model: THS-A4C-100  
Date of Calibration: 06/18/08  
Serial Number: 3188

**Test Condition:**



Parameters	Description
T1	-5°C
T2	65°C
t1	1 hrs
t2	2 hrs
t4, t5	30 min
t, t3	2°C/min
n (Cycle)	1

t,t3 = temprature slope  
t, t1: Power Off  
t2: Power on/off test 10 times (on 2 min / off 5min)  
t3,t4: Run PassMark Burn In Test  
t5: Win XP Software restart test 2 times  
Test Software:Windows XP

**Test Result:**

- a. No problem was found during the cold start test.
- b. No problem was found during the hot start test.