



AMB-551(SBC-780 A0.2)

Environment Test Report

Report NO : 03P020018

Issued by:

/

08/26/2003

Rex Chang
DV Engineer

Date

Reviewed by:

/

08/26/2003

Wayne Chen
A.V.P

Date

1. Test item list -----	2
2 Temperature cycle operation test -----	3
6. Cold start test -----	6

Num	Item	Spec
1.	Panel PC :	AMB-551
	1.Mother Board	AAEON SBC-780 A0.2
	2.LCD	AU M150XN05 1024*768 TFT
	3.Inverter	IV25185/T SPEC N0 H05-400-5051
	4.A/D Board	ASS' Y A/D Board V201 Rev:A0.3
	5.Switching Power Supply	SPS 115/230V 300W ATX PS ZIPPY AX2-5300FB-2S
	6.CPU	Intel Pentium 1GHz (133*7.5)
	7.DRAM	256MB ELPIDA D45128841G5-A75-9JF(PC133 SDRAM)
	8.System BIOS	SBC-780 BIOS 0.3
	9.HDD	Maxtor Fireball 3 ATA/133 HDD40GB

AMB-551(SBC-780 Rev:A0.2)

Test Date: 08-22~26-2003

Test Product: AMB-551 (SBC-780 A0.2) Panel PC

Test Site: AAEON DV Internal Lab.

Performed By : Rex Chang

Test Standard :

Reference IEC 68-2-61 Testing procedures
Test Z/ABD : Climatic Sequence Test

Test Equipment:

Programmable Temperature & Humidity Chamber

K.SON. INS. TECH. CORP.

Model : THS-D4H+-100

Date of Calibration : 06/03/03

Serial Number: 1241

Temperature Measurement :

20 Channel Thermal Recorder:

YOKOGAWA Inc,

Model : DA100-13-1D

Date of Calibration : 01/03/03

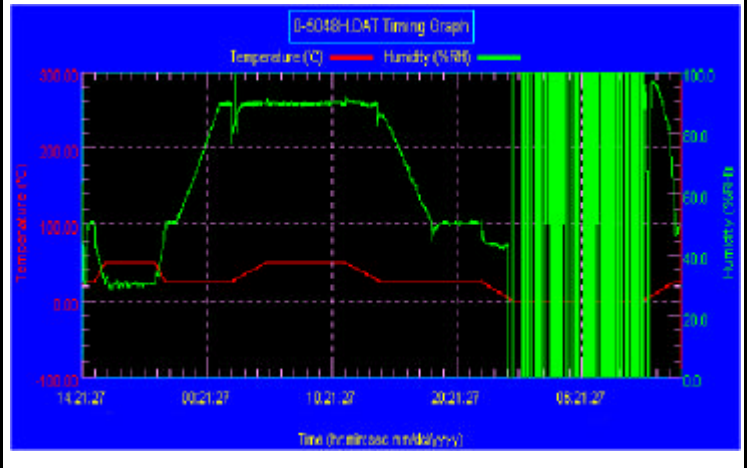
Serial Number: 12A323190

Temperature & Humidity Cycle Test:

Testing Specification

Step	Temperature ()	Humidity (%RH)	Duration (HH:MM)
1	25	50	00:30
2	25	50	00:30
3	50	30	00:50
4	50	30	04:00
5	25	50	00:50
6	25	50	00:50
7	25	90	03:30
8	25	90	01:00
9	50	90	02:46
10	50	90	06:21
11	25	90	02:46
12	25	50	04:07
13	25	50	03:30
14	25	50	00:30
15	0	0	02:30
16	0	0	10:30
17	25	50	02:30
18	25	50	00:30

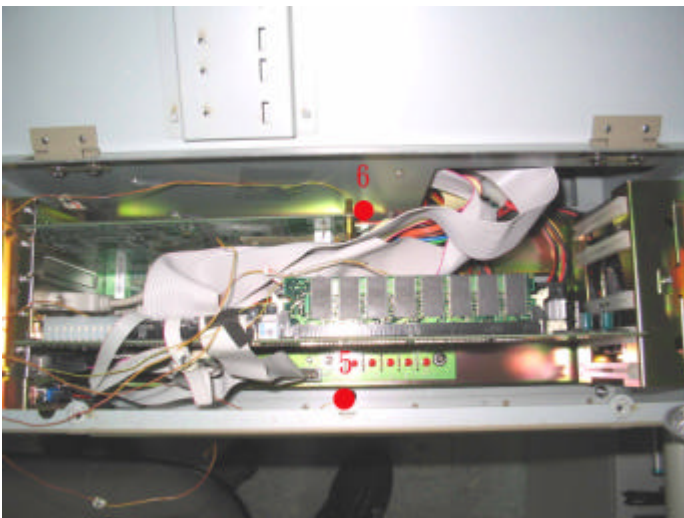
Test Curve:



Sample Configuration & Quantity Under Test:

Using one AMB-551 PanelPC.

Temperature Recorder:
Measuring Accelerometer Position:



Note : 1.Dummy load : 5V/1A(5W);12V/0.5A(6W) x 1 pcs

Thermal profile data :**AMB-551 15" LCD Panel PC**

Point	Temp. Stage		
	50	25	0
1. CPU	65.6	42.0	18.2
2. VIA VT8686T Chipset	62.7	38.3	13.7
3. Memory	67.7	43.8	19.3
4. VIA VT82C686B Chipset	72.6	48.8	24.6
5. Inside Air Temperature (1)	70.4	46.5	22.3
6. Inside Air Temperature (1)	76.1	51.2	26.3
7. HDD Surface	72.5	49.0	25.2
8. Inside Air Temperature (3)	59.3	34.4	9.5
9. Control Box External Surface	50.4	25.6	0.8
10. Chamber Air Temperature	50.4	25.6	0.8

Sample Configuration & Quantity Under Test:

Quantity: 1 (AMB-551 15" Panel PC)

Test Result:

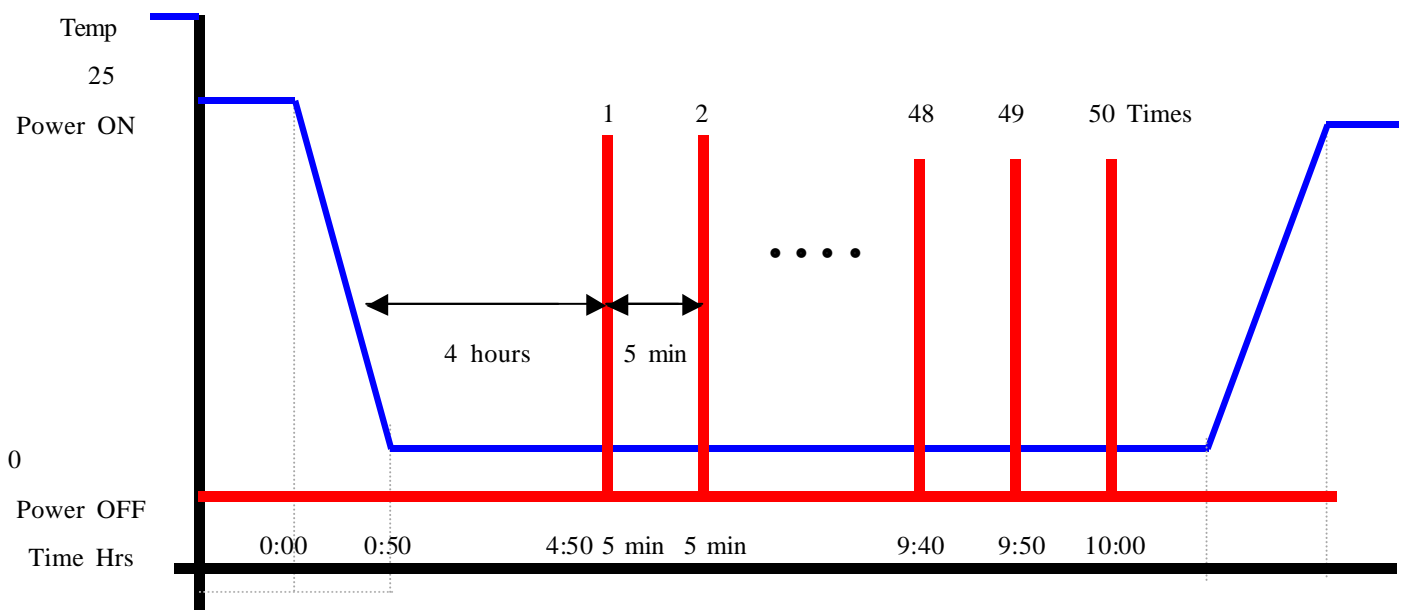
Passed.

The AMB-551 Industrial Panel PC meets temperature cycle test

AMB-551 (SBC-780 A0.2)

Test Date: 08-26-2003**Test Product:** AMB-551 15" LCD Panel PC.**Test Site:** AAEON DV Internal Lab.**Performed By :** Rex Chang**Test Standard :** Reference IEC 68-2-1 Testing procedures
Test Ab : Cold Test**Test Equipment:**Programmable Temperature & Humidity Chamber
K.SON. INS. TECH. CORP.
Model : THS-D4H+-100
Date of Calibration : 06/03/03
Serial Number: 1241**Test Condition :**

1. Test Temperature : 0
2. Test Times : 5 Hours or 50 times of ON/OFF
 - (1) Power off for 4 hours before 1' st power on. Then once complete boot, power off immediately .
 - (2) After 5 min later power on again and wait until booting is completed.
 - (3) Repeat (2) for around 4:50
 - (4) Power off then wait for 10 min before final power on operation.
3. Number of test : 50 times
4. Test Software : Windows XP
5. Test Environment Curve :



AMB-551 (SBC-780 A0.2)

Sample Configuration & Quantity Under Test:

Quantity: 1

Test Result:

Passed.

The AMB-551 15" LCD Panel PC meets cold start tes t



AMB-551(SBC-860 A1.0) Environment Test Report

Report NO : 03P020022

Issued by:

/

09/29/2003

Rex Chang
DV Engineer

Date

Reviewed by:

/

09/29/2003

Wayne Chen
A.V.P

Date

1. Test item list -----	2
2 Temperature cycle operation test -----	3
6. Cold start test -----	6

Num	Item	Spec
1.	Panel PC :	AMB-551
	1.Mother Board	AAEON SBC-860 A1.0
	2.LCD	AU M150XN05 1024*768 TFT
	3.Inverter	IV25185/T SPEC N0 H05-400-5051
	4.A/D Board	ASS' Y A/D Board V201 Rev:A0.3
	5.Switching Power Supply	SPS.ATX 100-240V 300W AC With PFC.UMEC.UPF300-AF
	6.CPU	Intel Pentium4 1.5 GHz (100*15)
	7.DRAM	512MB SAMSUNG 229 K4H560838C-TCB3 (DDR333)
	8.System BIOS	SBC-860_10 BIOS Rev:1.0
	9.HDD	Maxtor Fireball 3 ATA/133 HDD40GB

AMB-551(SBC-860 Rev:A1.0)

Test Date: 09-26~29-2003

Test Product: AMB-551 (SBC-860 A1.0) Panel PC

Test Site: AAEON DV Internal Lab.

Performed By : Rex Chang

Test Standard :

Reference IEC 68-2-61 Testing procedures
 Test Z/ABD : Climatic Sequence Test

Test Equipment:

Programmable Temperature & Humidity Chamber
 K.SON. INS. TECH. CORP.
 Model : THS-D4H+-100
 Date of Calibration : 06/03/03
 Serial Number: 1241

Temperature Measurement :

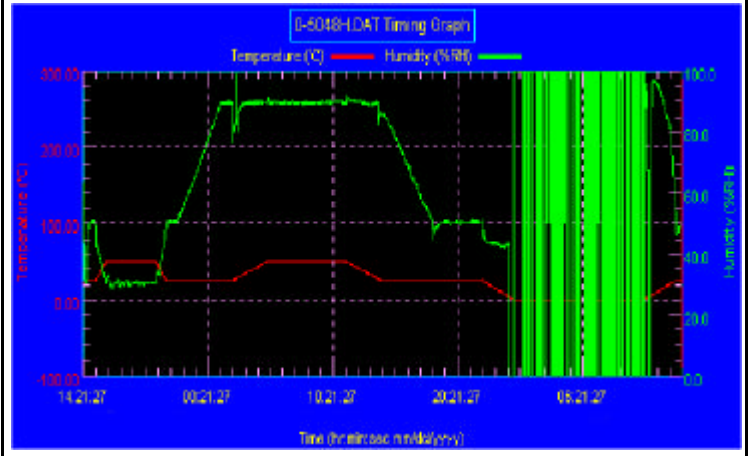
20 Channel Thermal Recorder:
 YOKOGAWA Inc,
 Model : DA100-13-1D
 Date of Calibration : 01/03/03
 Serial Number: 12A323190

Temperature & Humidity Cycle Test:

Testing Specification

Step	Temperature ()	Humidity (%RH)	Duration (HH:MM)
1	25	50	00:30
2	25	50	00:30
3	50	30	00:50
4	50	30	04:00
5	25	50	00:50
6	25	50	00:50
7	25	90	03:30
8	25	90	01:00
9	50	90	02:46
10	50	90	06:21
11	25	90	02:46
12	25	50	04:07
13	25	50	03:30
14	25	50	00:30
15	0	0	02:30
16	0	0	10:30
17	25	50	02:30
18	25	50	00:30

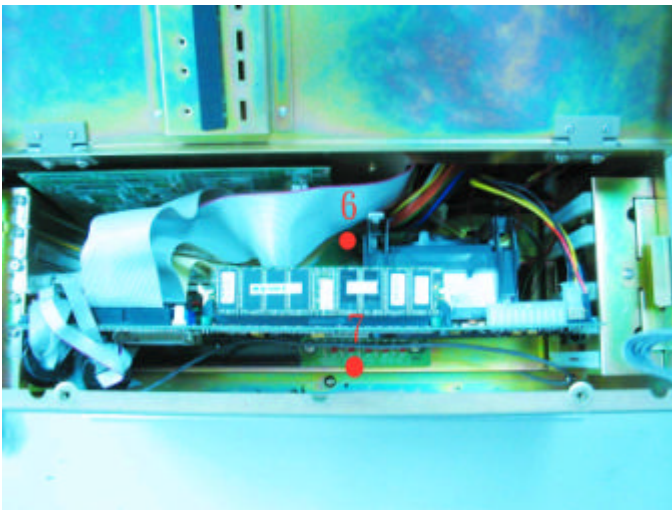
Test Curve:



Sample Configuration & Quantity Under Test:

Using one AMB-551 Panel PC.

Temperature Recorder: Measuring Accelerometer Position:



Note : 1.Dummy load : 5V/1A(5W);12V/0.5A(6W) x 1 pcs

AMB-551(SBC-860 Rev:A1.0)**Thermal profile data :****AMB-551 15" LCD Panel PC**

Point	Temp. Stage		
	50	25	0
1. CPU	61.8	36.8	11.2
2. Intel RG82845GV-SL6NR Chipset	72.7	48.8	27.1
3. Intel FW82801DB Chipset	72.0	47.2	23.3
4. ALC201 AC'97 Audio Codec	76.8	52.8	28.5
5. Memory	69.6	44.7	22.0
6. Inside Air Temperature (1)	67.0	42.9	19.9
7. Inside Air Temperature (2)	63.4	37.5	11.9
8. HDD Surface	61.8	38.4	16.0
9. Inside Air Temperature (3)	53.9	29.1	6.4
10. Control Box. External Surface	56.0	31.1	5.8
11. Chamber Air Temperature	51.1	26.8	1.8

Sample Configuration & Quantity Under Test:

Quantity: 1 (AMB-551 15" Panel PC)

Test Result:**Passed.**

The AMB-551 Industrial Panel PC meets temperature cycle test

AMB-551 (SBC-860 A1.0)

Test Date: 09-25-2003

Test Product: AMB-551 15" LCD Panel PC.

Test Site: AAEON DV Internal Lab.

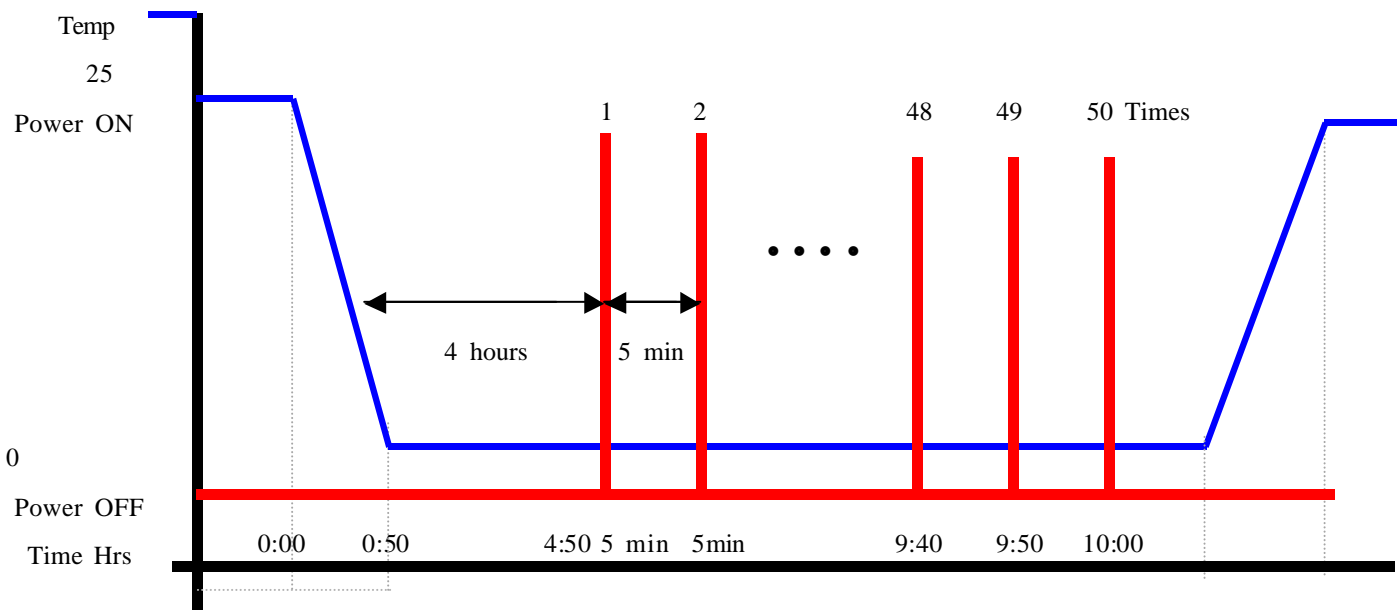
Performed By : Rex Chang

Test Standard : Reference IEC 68-2-1 Testing procedures
Test Ab : Cold Test

Test Equipment:
Programmable Temperature & Humidity Chamber
K.SON. INS. TECH. CORP.
Model : THS-D4H+-100
Date of Calibration : 06/03/03
Serial Number: 1241

Test Condition :

1. Test Temperature : 0
2. Test Times : 5 Hours or 50 times of ON/OFF
 - (1) Power off for 4 hours before 1' st power on. Then once complete boot, power off immediately .
 - (2) After 5 min later power on again and wait until booting is completed.
 - (3) Repeat (2) for around 4:50
 - (4) Power off then wait for 10 min before final power on operation.
3. Number of test : 50 times
4. Test Software : Windows XP
5. Test Environment Curve :



AMB-551 (SBC-860 A1.0)

Sample Configuration & Quantity Under Test:

Quantity: 1

Test Result:

Passed.

The AMB-551 15" LCD Panel PC meets cold start tes t