



AMB-2053HTT-E4 Environment Test Report

Report NO : 03P020002

Issued by:

/

01/07/2003

Rex Chang
DV Engineer

Date

Reviewed by:

/

01/07/2003

Wayne Chen
DV Manager

Date

1. Test item list -----	2
2 Temperature cycle operation test -----	3
3. Cold start test -----	6

Num	Item	Spec
1.	LCD panel PC:	AMB-2053HTT-E4
	1.LCD	Fujitsu 38XGC6V-06
	2.Power	MAGIC POWER MPD-8071-S 70W
	3. Inverter	SI JING HARNG 8592F-01
2.	CPU Board:	SBC-658 A1.0
	1.CPU	Pentium 850MHz (100*8.5)
	2.Memory	ELPIDA D45128841G5-A75-9JF PC-133 SDRAM 256MB

AMB-2053HTT-E4

Test Date: 01-03~01-05-2003

Test Product: AMB-2053HTT-E4 15" LCD flat panel PC

Test Site: AAEON DV Internal Lab.

Performed By : Rex Chang

Test Standard :

Reference IEC 68-2-61 Testing procedures
 Test Z/ABD : Climatic Sequence Test

Test Equipment:

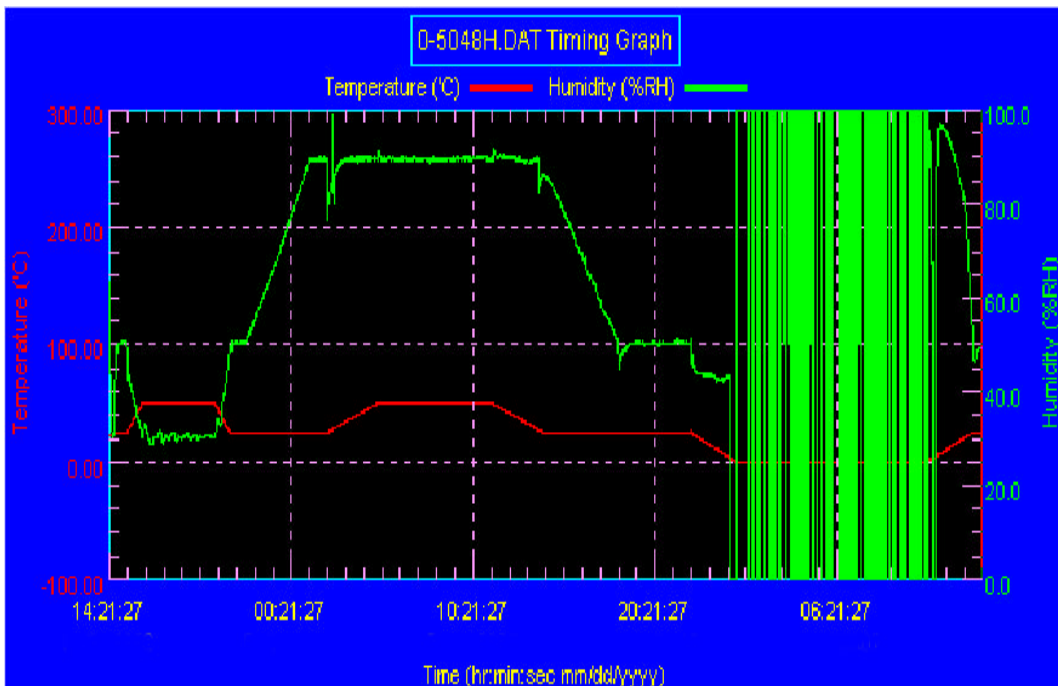
Programmable Temperature & Humidity Chamber
 K.SON. INS. TECH. CORP.
 Model : THS-D4H+-100
 Date of Calibration : 06/10/01
 Serial Number: 1241

Temperature & Humidity Cycle Test:

Testing Specification

Step	Temperature ()	Humidity (%RH)	Duration (HH:MM)
1	25	50	00:30
2	25	50	00:30
3	50	30	00:50
4	50	30	04:00
5	25	50	00:50
6	25	50	00:50
7	25	90	03:30
8	25	90	01:00
9	50	90	02:46
10	50	90	06:21
11	25	90	02:46
12	25	50	04:07
13	25	50	03:30
14	25	50	00:30
15	0	0	02:30
16	0	0	10:30
17	25	50	02:30
18	25	50	00:30

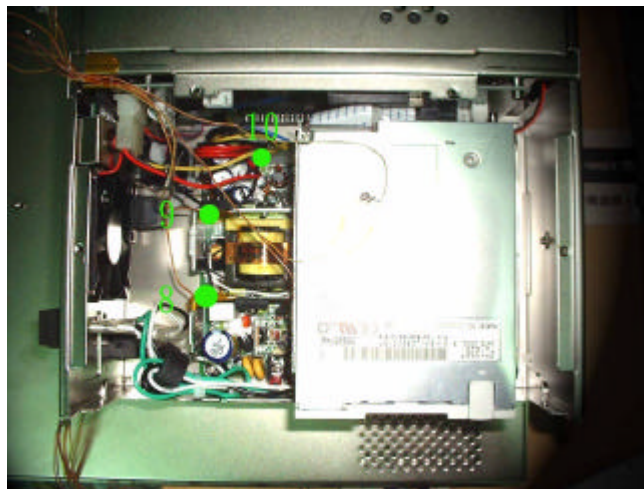
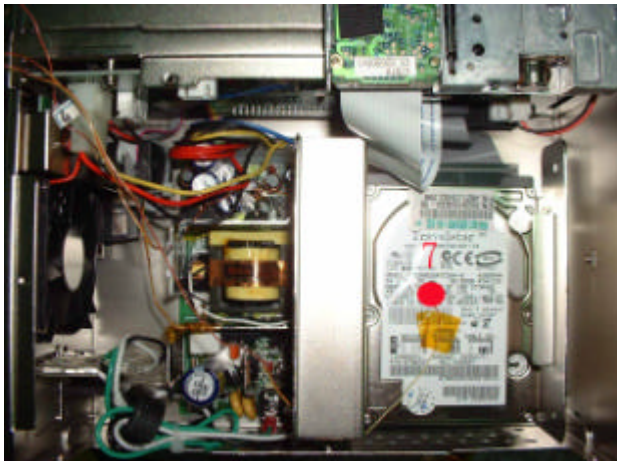
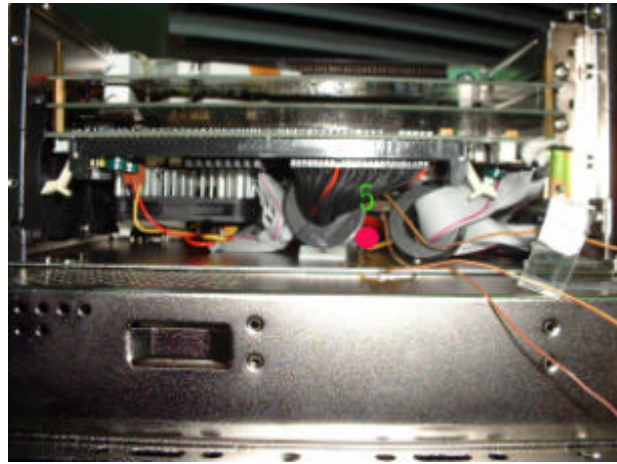
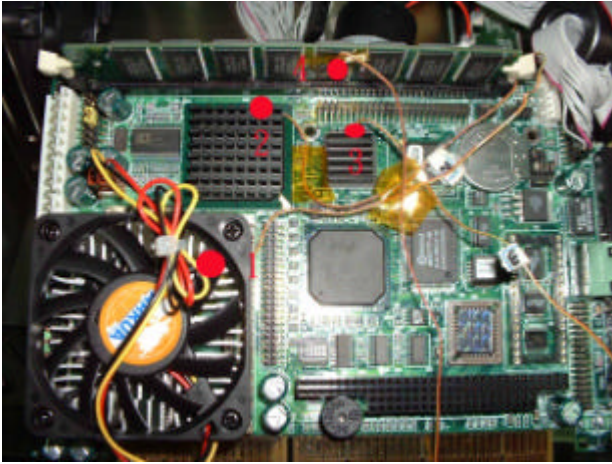
Test Curve:



AMB-2053HTT-E4

Sample Configuration & Quantity Under Test:

Using one AMB-2053HTT-E4 15" LCD flat panel PC.

Measuring Accelerometer Position:

Note : 1.Dummy load : 5V/1A(5W);12V/0.5A(6W) x 2 pcs

AMB-2053HTT-E4**Thermal profile data :**

Point	Temp. Stage		
	50	25	0
1.Pentium 850MHz CPU Surface	61.5	36.4	10.6
2.Intel 82443BX Chipset	64.7	40.0	14.5
3.C&T 69000 VGA Chipset	60.9	36.2	10.6
4.Memory	57.4	32.9	7.7
5.Control Box.Inside air temperature	55.5	31.3	6.3
6. Control Box External Surface	52.5	27.3	2.3
7.HDD	53.9	29.4	4.7
8.Power Heat Sink(1)	81.8	56.4	30.6
9.Power Heat Sink(2)	78.4	56.5	33.6
10.Power Control Box.Inside air temperature	57.4	32.8	7.0
11. Chamber air temperature	51.4	26.0	0.9

Test Result :**Passed.**

The Using one AMB-2053HTT-E4 15" LCD flat panel PC meets temperature cycle test.

AMB-2053HTT-E4**Test Date:** 01-06-2003**Test Product:** AMB-2053HTT-E4 15" LCD flat panel PC.**Test Site:** AAEON DV Internal Lab.**Performed By :** Rex Chang**Test Standard :** Reference IEC 68-2-1 Testing procedures
Test Ab : Cold Test**Test Equipment:**Programmable Temperature & Humidity Chamber
K.SON. INS. TECH. CORP.

Model : THS-D4H+-100

Date of Calibration : 06/10/01

Serial Number: 1241

Test Condition :

1. Test Temperature : 0

2. Test Times : 5Hrs

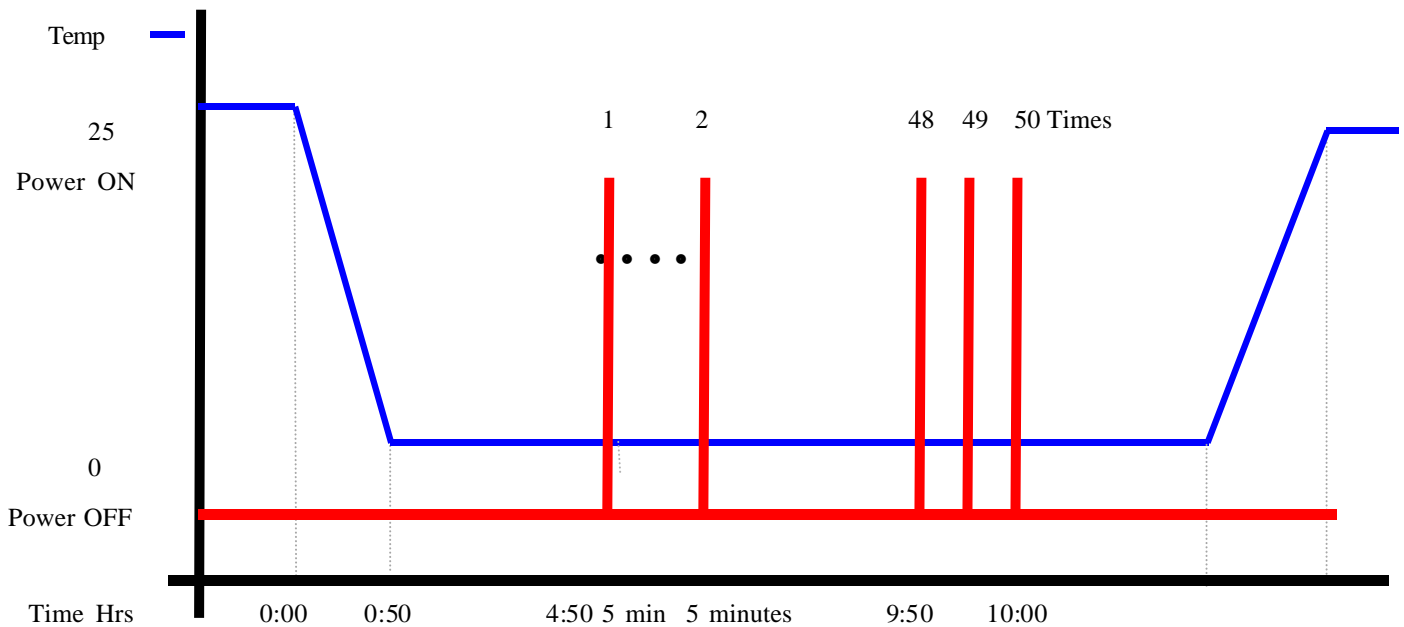
Power off 4 hours before first time power on

Power off to next power on between 10 minutes

3. Number of test : 50 times

4. Test Software : MS-DOS

5. Test Environment Curve :

**Sample Configuration & Quantity Under Test:**

Quantity: 1 (AMB-2053HTT-E4)

Test Result:**Passed.**

The AMB-2053HTT-E4 15" LCD flat panel PC meets cold start test