



AAEONTechnology INC.
ISO-9001/ISO-14001 Certified
Industrial Automation PCs

AMB-2023 (ACS-2303)

Temperature / Humidity Test Report

Issued by:

Rex Chang
QE Engineer

/

04/26/2002

Date

Reviewed by:

Wen - Yuan Yang
QE Manager

/

04/26/2002

Date

1. Test Product: Modular System Industrial Panel PCs

2. Model Name: AMB-2023(ACS-2303)

3. Test Date: 04-25-2002

4. Test Site: AAEON QA Internal Lab.

5. Test Equipment

Type	MFR	Model Number	Serial Number	Last CAL.
Programmable Temperature & Humidity Chamber	KSON	THS-D4H+-100	1241	06/10/01

6. Test Standard:

NO.	Description
IEC 68-2-61	Test Z/ABD : Climatic Sequence Test
N/A	Power ON/OFF 50 Times at 0

7. Testing Item:

Temperature & Humidity Cycle
 Test 0 Power On/Off Test

8. Additional Test Peripheral:

Configuration	Model
Test O.S.	Win98SE
Test Software	Windows Media Player (VCD viewing)
Test Fixture (For Test Software)	Temperature Recorder Fixture
Test Fixture	Power on/off(110V) Fixture

9. Sample Configuration & Quantity Under Test:

Quantity: 1 (12.1" LCD + ACS-2303 Control Box)

Sample Configuration:

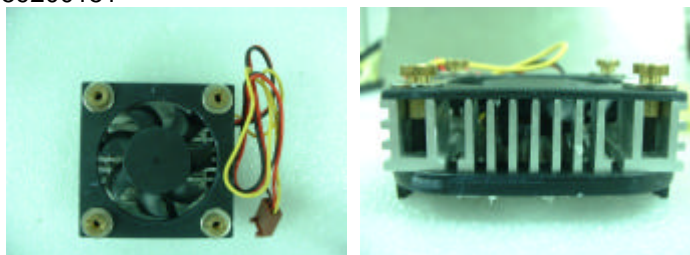
9-1 12.1" VGA Color TFT LCD Displays

Component	Model Name	Temperature		Humidity	
		Operation	Storage	Operation	Storage
12.1" LCD	TOSHIBA LTM12C289	0 ~ 50	-20 ~ 60	10 ~90%RH	10 ~90%RH
12.1" Touch Screen	Penmount 95419	-20 ~ 50	-40 ~ 70	2 weeks at 50 /90%RH	70 ,240 hours at ambient humidity -40 , continuous at ambient humidity
Inverter	CHI SAM CDA-084A	0 ~	-20 ~ 70	10 ~95%RH.	10 ~95%RH
Switching Power Supply	SKYNET SNP-8071-A	0 ~ 50	-40 ~ 85	—	—

9-2 ACS-2303 Control Box

CPU	Intel Celeron 566 MHz
DRAM	128MB NEC D45128841G5-A75-9JF(PC133 SDRAM)
PCB	Rev.CI7BP-1.00
System BIOS Version	ACS-2303B For amb-2212 BIOS Rev.2.01
HDD	Fujitsu MPG3204AT-E
Power (P/N)	1757307031
Cooler (P/N)	1759200151

Cooler (P/N) : 1759200151



10. Test Result:

Standard	Description	Result
IEC 68-2-61	Temperature & Humidity Cycle Test (Windows Media player used for viewing VCD)	Pass
N/A	Power ON/OFF 50 Times at 0	Pass

Note : 1.Dummy load : 5V/1A(5W);12V/0.5A(6W) x 2 pcs

2.There is one additional fan(a total of two) in the expansion slot side of control box.

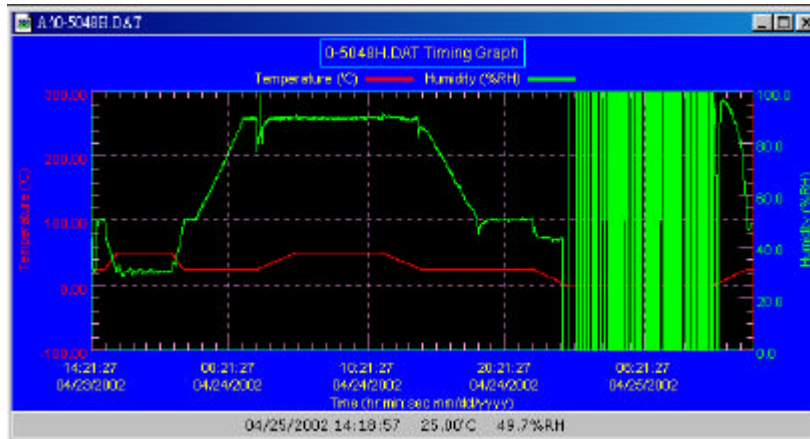


11. Temperature & Humidity Cycle Test:

11-1 Testing Specification:

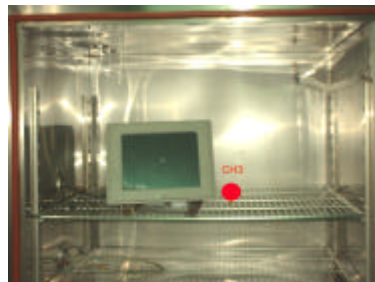
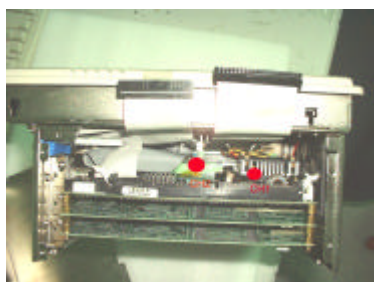
Step	Temperature ()	Humidity (%RH)	Duration (HH:MM)
1	25	50	00:30
2	25	50	00:30
3	50	30	00:50
4	50	30	04:00
5	25	50	00:50
6	25	50	00:50
7	25	90	03:30
8	25	90	01:00
9	50	90	02:46
10	50	90	06:21
11	25	90	02:46
12	25	50	04:07
13	25	50	03:30
14	25	50	00:30
15	0	0	02:30
16	0	0	10:30
17	25	50	02:30
18	25	50	00:30

11-2 Test Curve:

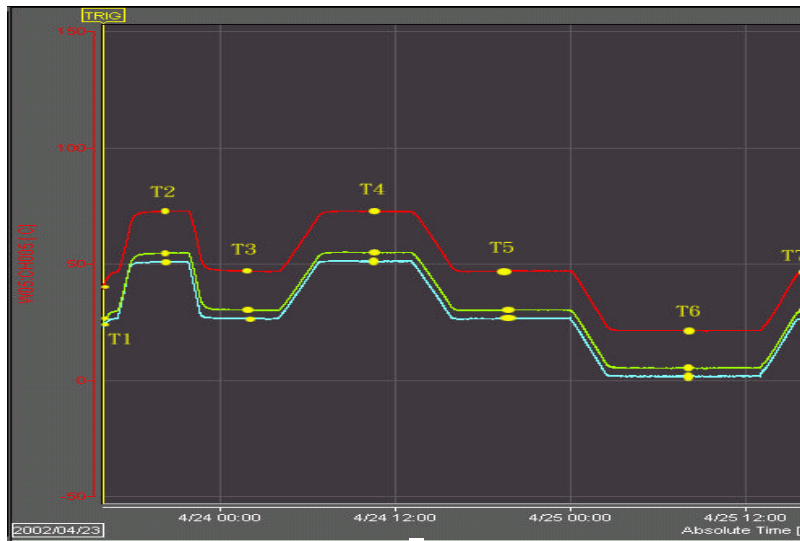


12. Temperature Recorder

12-1 Measuring Accelerometer Position:



12-2 Temperature chart:



Temp. Stage \ Channel	Channel 1 (CPU)	Channel 2 (Control Box)	Channel 3 (Chamber)
T1 (25)	39.1	24.0	20.0
T2 (50)	72.7	54.6	50.9
T3 (25)	47.1	30.2	26.6
T4 (50)	72.8	55.1	51.2
T5 (25)	47.1	30.3	26.7
T6 (0)	21.3	5.2	1.5
T7 (25)	47.1	30.2	26.4

13. Power ON/OFF 50 Times at 0 :

13-1 Testing Specification:

Step	Temperature ()	Humidity (%RH)	Duration (HH:MM)
1	25	50	00:10
2	25	50	00:20
3	0	0	01:30
4	0	0	01:00
5	25	0	01:30
6	25	50	00:30

13-2 Test Curve:

