



AMB-232A

Environment Test Report

Report NO : 03P020004

Issued by:

/

03/05 /2003

Rex Chang
Test Engineer

Date

Reviewed by:

/

03/05/2003

Wayne Chen
A.V.P

Date

1. <i>Test item list</i> -----	2
2. <i>Temperature cycle operation test</i> -----	3
3. <i>High temperature storage test</i> -----	4
4. <i>Low temperature storage test</i> -----	6
5. <i>Humidity test</i> -----	7
6. <i>Cold start test</i> -----	8

Sample 1 (AC Power)

Num	Item	Spec
1.	Control Box :	AEC-206(SBC-860)
2.	LCD panel :	AMB-232AT-D1
	1.LCD	10.4".SAMSUNG. LTN104S2-L01.1LAMP
	2.Power Adapter	EDAC 100/240V.12V.5A.60W.DC.With Lock EA1050A(13)
	3.A/D board	AAEON ADB-100A
	4.Inverter	KING CORE HY1006
	5.Touch Screen	Dynapro TS-95422

Sample 2 (DC Power)

Num	Item	Spec
1.	Control Box :	AEC-206(SBC-860)
2.	LCD panel :	AMB-232A-C4
	1.LCD	10.4".SAMSUNG. LTN104S2-L01.1LAMP
	2. DC TO DC BOARD	AAEON GM89-008 18~36V.1A.36W.DC
	3.A/D board	AAEON ADB-100A
	4.Inverter	KING CORE HY1006
	5.Touch Screen	Dynapro TS-95422

AMB-232A

Test Date: 18~20-11-2003

Test Product: TD-312A 10.4" LCD flat panel monitor.

Test Site: AAEON DV Internal Lab.

Performed By : Rex Chang

Test Standard :

Reference IEC 68-2-61 Testing procedures
 Test Z/ABD : Climatic Sequence Test

Test Equipment:

Programmable Temperature & Humidity Chamber
 K.SON. INS. TECH. CORP.
 Model : THS-D4H+-100
 Date of Calibration : 06/10/01
 Serial Number: 1241

Temperature Measurement :

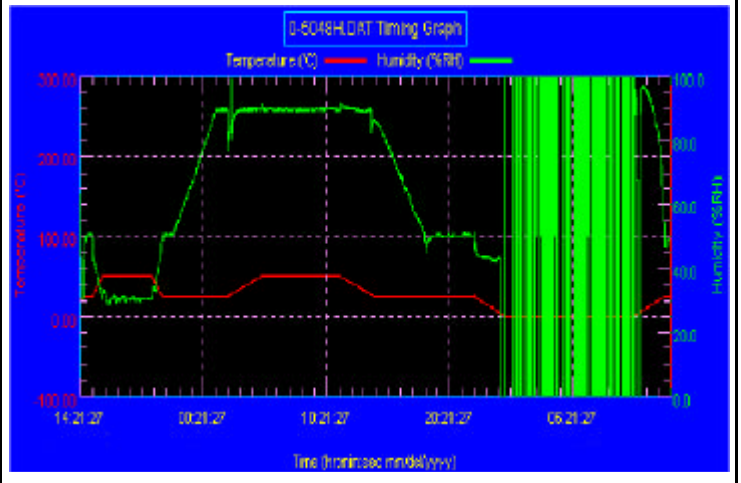
20 Channel Thermal Recorder:
 YOKOGAWA Inc,
 Model : DA100-13-1D
 Date of Calibration : 02/01/02
 Serial Number: 12A323190

Temperature & Humidity Cycle Test:

Testing Specification

Step	Temperature ()	Humidity (%RH)	Duration (HH:MM)
1	25	50	00:30
2	25	50	00:30
3	50	30	00:50
4	50	30	04:00
5	25	50	00:50
6	25	50	00:50
7	25	90	03:30
8	25	90	01:00
9	50	90	02:46
10	50	90	06:21
11	25	90	02:46
12	25	50	04:07
13	25	50	03:30
14	25	50	00:30
15	0	0	02:30
16	0	0	10:30
17	25	50	02:30
18	25	50	00:30

Test Curve:



Sample Configuration & Quantity Under Test:

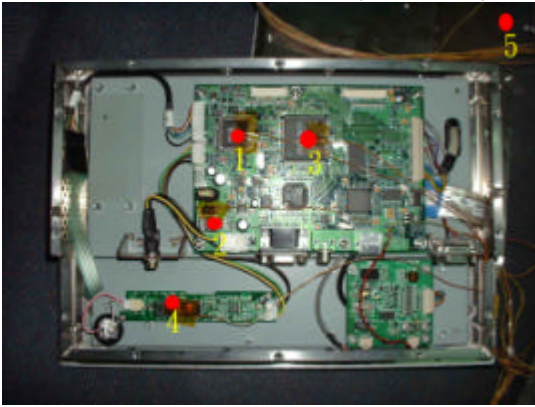
Using two AMB-232A 10.4" LCD flat panel monitor.

Control Box : AEC-206(SBC-860)

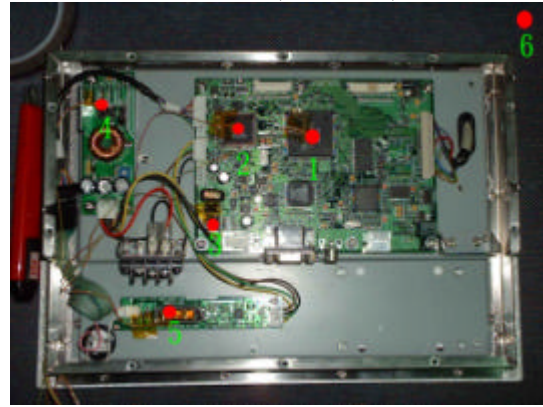
AMB-232A

Temperature Recorder:

Measuring Accelerometer Position:
AMB-232AT-D1 (AC Power)



AMB-232A-C4 (DC Power)



Thermal profile data :

AMB -232AT -D1 (AC Power)

Point	Temp. Stage		
	50	25	0
1.ALi M6759 (U3)	78.7	55.2	31.2
2.NS JM24AB LM2576S-ADJ (U16)	69.9	46.6	22.1
3.TOPRO TP6740SVQ (U5)	74.1	50.7	25.4
4.Inverter	67.8	46.0	22.6
5.Chamber air temperature	50.7	25.9	0.6

AMB -232A-C4 (DC Power)

Point	Temp. Stage		
	50	25	0
1.TOPRO TP6740SVQ (U5)	76.7	48.2	24.3
2.ALi M6759 (U3)	69.4	54.1	30.6
3.NS JM24AB LM2576S-ADJ (U16)	69.4	46.1	21.8
4.DC to DC board - Heat sink	60.0	36.0	11.6
5.Inverter	67.6	45.5	21.8
6.Chamber air temperature	50.7	25.9	0.6

Test Result :

Passed.

The AMB-232A 10.4" LCD Monitor meets temperature cycle test.

AMB-232A**Test Date:** 11-15~17-2003**Test Product:** AMB-232A 10.4" LCD flat panel monitor.**Test Site:** AAEON DV Internal Lab.**Performed By :** Rex Chang**Test Standard :** Reference IEC 68-2-2 Testing procedures
Test Bb : Dry Heat Test (Non-operation)**Test Equipment:**

Programmable Temperature & Humidity Chamber

K.SON. INS. TECH. CORP.

Model : THS-D4L+-100

Date of Calibration : 10/28/02

Serial Number: 2582

Testing Item:

1. Test Temperature: 60
2. Test Times: 48Hrs
3. Test Software: Windows media Player (Video test soft-MPEG form HDD)
4. Test Environment Curve:

**Sample Configuration & Quantity Under Test:**

Quantity: 2 (AMB-232AT-D1 & AMB-232A-C4 10.4" LCD)

Test Result:**Passed.**

The AMB-232A 10.4" LCD Monitor meets High temperature storage test.

AMB-232A**Test Date:** 20-22~21-2003**Test Product:** TD-312A 10.4" LCD flat panel monitor.**Test Site:** AAEON DV Internal Lab.**Performed By :** Rex Chang**Test Standard :** Reference IEC 68-2-1
Testing procedures Test Ab : Cold Test (Non-operation)**Test Equipment:**

Programmable Temperature & Humidity Chamber

K.SON. INS. TECH. CORP.

Model : THS-D4H+-100

Date of Calibration : 10/28/02

Serial Number: 2582

Testing Item:

1. Test Temperature : -20
2. Test Times : 48Hrs
3. Test Software : Windows media Player (Video test soft-MPEG form HDD)
4. Test Environment Curve :

**Sample Configuration & Quantity Under Test:**

Quantity: 2 (AMB-232AT-D1 & AMB-232A-C4 10.4" LCD)

Test Result:**Passed.**

The AMB-232A 10.4" LCD Monitor meets Low temperature storage test

AMB-232A**Test Date:** 02-27~03-01-2003**Test Product:** OPD-215A 15" LCD flat panel monitor.**Test Site:** AAeon DV Internal Lab.**Performed By :** Rex Chang**Test Standard :** Reference IEC 68-2-30 Testing procedures
Test Db : Humidity test (Non-operation)**Test Equipment:**

Programmable Temperature & Humidity Chamber

K.SON. INS. TECH. CORP.

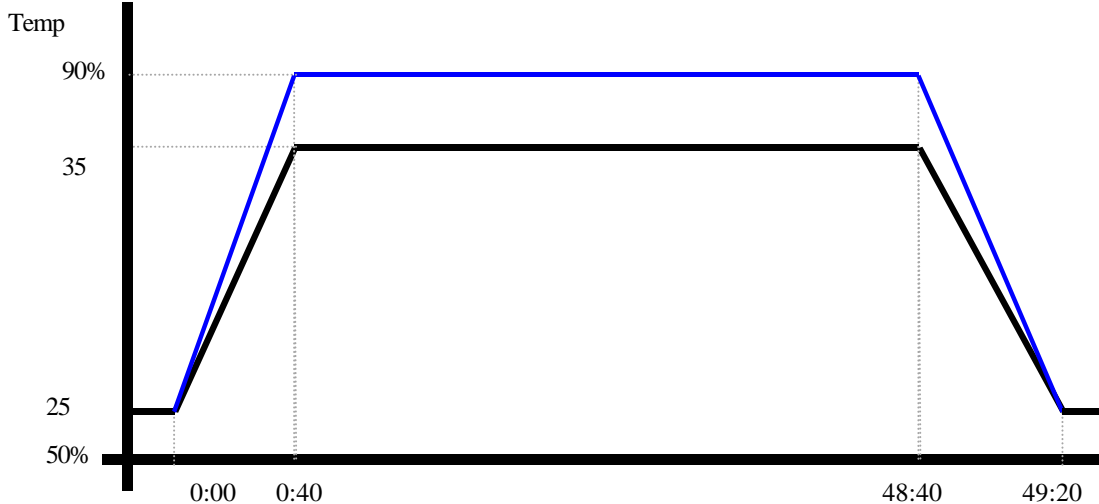
Model : THS-D4H+-100

Date of Calibration : 06/10/02

Serial Number: 1241

Testing Item:

1. Test Temperature: 35
2. Test Humidity : 90%RH
3. Test Times: 48Hrs
4. Test Software : Windows media Player (Video test soft-MPEG form HDD)
5. Test Environment Curve:

Humidity %**Sample Configuration & Quantity Under Test:**

Quantity: 2 (AMB-232AT-D1 & AMB-232A-C4 10.4" LCD)

Test Result:**Passed.**

The AMB-232A 10.4" LCD Monitor meets Humidity test

AMB-232A

Test Date: 09-10-2003

Test Product: AMB-232A 10.4" LCD flat panel monitor.

Test Site: AAEON DV Internal Lab.

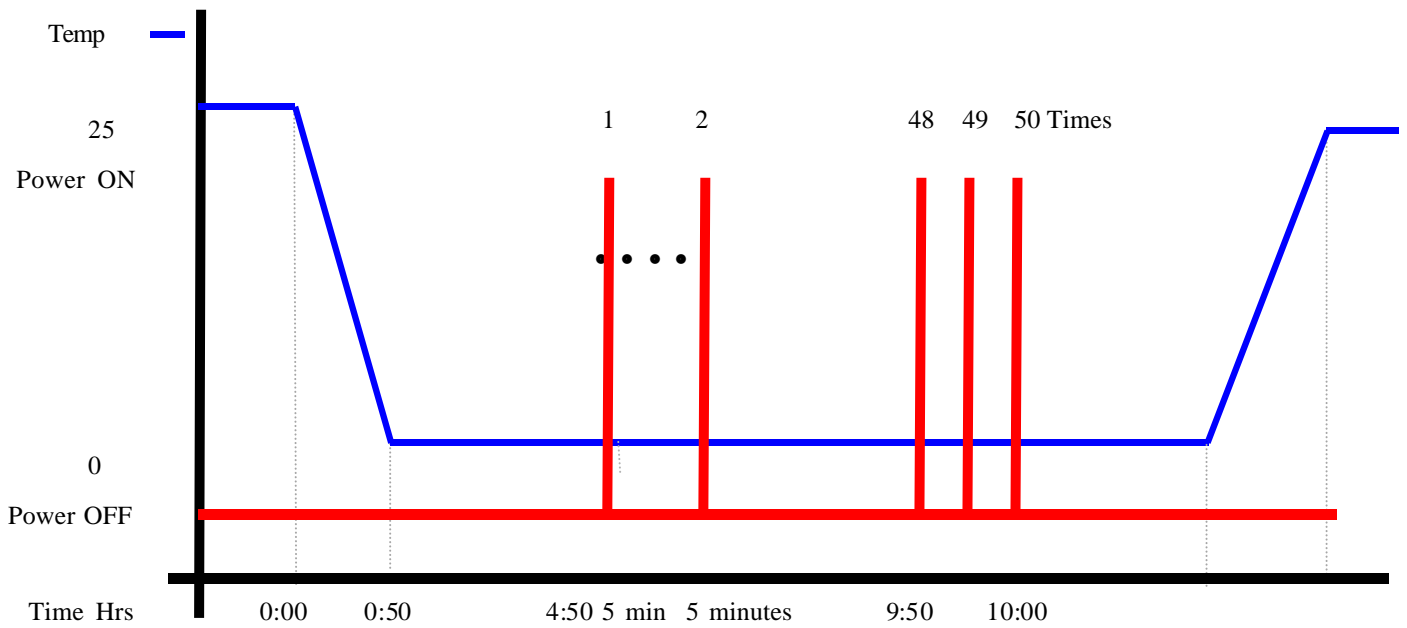
Performed By : Rex Chang

Test Standard : Reference IEC 68-2-1 Testing procedures
Test Ab : Cold Test

Test Equipment:
Programmable Temperature & Humidity Chamber
K.SON. INS. TECH. CORP.
Model : THS-D4H+-100
Date of Calibration : 06/10/02
Serial Number: 1241

Test Condition :

1. Test Temperature : 0
2. Test Times : 5Hrs
Power off 4 hours before first time power on
Power off to next power on between 10 minutes
3. Number of test : 50 times
4. Test Software : Windows98SE
5. Test Environment Curve :



AMB-232A

Sample Configuration & Quantity Under Test:

Quantity: 2 (AMB-232AT-D1 & AMB-232A-C4 10.4" LCD)

Test Result:

Passed.

The AMB-232A 10.4" LCD Monitor meets Low temperature storage test