



AAEONTechnology INC.
ISO-9001/ISO-14001 Certified
Industrial Automation PCs

AFW-1000

Temperature / Humidity Test Report

Issued by:

/

04/01/2002

Rex Chang
QE Engineer

Date

Reviewed by:

/

04/01/2002

Wen - Yuan Yang
QE Manager

Date

1. Test Product: Firewall System
2. Model Name: AFW-1000-E5
3. Test Date: 03-29-2002
4. Test Site: AAEON QA Internal Lab.
5. Test Equipment

Type	MFR	Model Number	Serial Number	Last CAL.
Programmable Temperature & Humidity Chamber	KSON	THS-D4H+-100	1241	06/10/01

6. Test Standard:

NO.	Description
IEC 68-2-61	Test Z/ABD : Climatic Sequence Test

7. Testing Item:

Temperature & Humidity Cycle

8. Additional Test Peripheral:

Configuration	Model
Test O.S.	Win2000 Advanced Server
Test Software	Windows Media Player (VCD viewing)
Test Fixture	Temperature Recorder Fixture

9. Test Environment:

Temperature: 20 ± 2

Humidity: 60 ± 20%RH

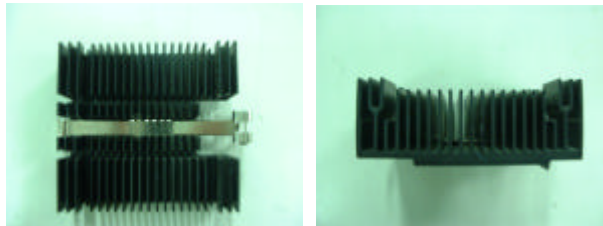
10. Sample Configuration & Quantity Under Test:

Quantity: 1

Sample Configuration:

CPU	Intel Pentium 1GHz (133x6 ; 1.75V)
DRAM	SO-DIMM 256MB HITACHI 52256165BTT75 (PC-133 SDRAM)
PCB	SBC-659 Rev.A0.3
System BIOS Version	SBC-659 BIOS Rev.1.3
PC-104 Plus Card	PCM-3730 (Support 3 sets 10/100Base-T Fast Ethernet)
HDD	Fujitsu MPG3204AT-E
Power (P/N)	1757307031
Heat Sink (P/N)	MO36011000

Heat Sink (P/N) : MO36011000



11. Test Result:

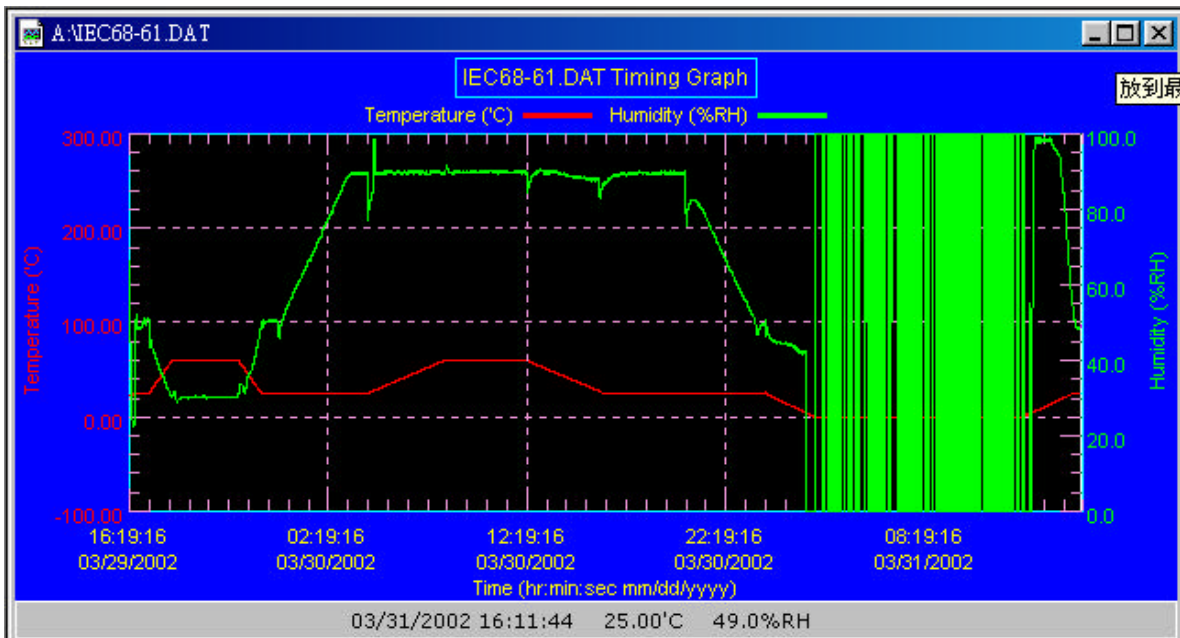
Standard	Description	Result
IEC 68-2-61	Temperature & Humidity Cycle Test (Windows Media player used for viewing VCD)	Pass

12. Temperature & Humidity Cycle Test:

12-1 Testing Specification:

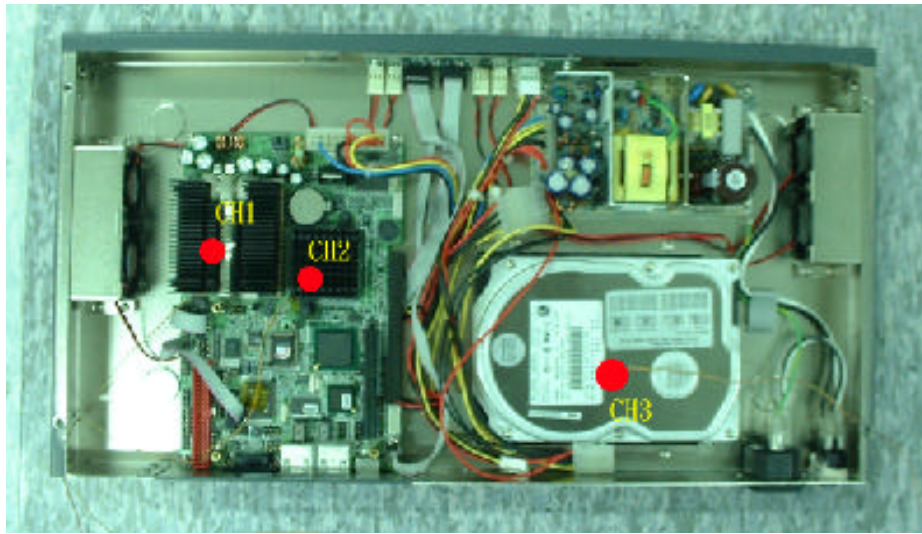
Step	Temperature ()	Humidity (%RH)	Duration (HH:MM)
1	25	50	00:30
2	25	50	00:30
3	60	30	01:10
4	60	30	03:20
5	25	50	01:10
6	25	50	00:50
7	25	90	03:30
8	25	90	01:00
9	60	90	03:53
10	60	90	04:07
11	25	90	03:53
12	25	50	04:07
13	25	50	03:30
14	25	50	00:30
15	0	0	02:30
16	0	0	10:30
17	25	50	02:30
18	25	50	00:30

12-2 Test Curve:

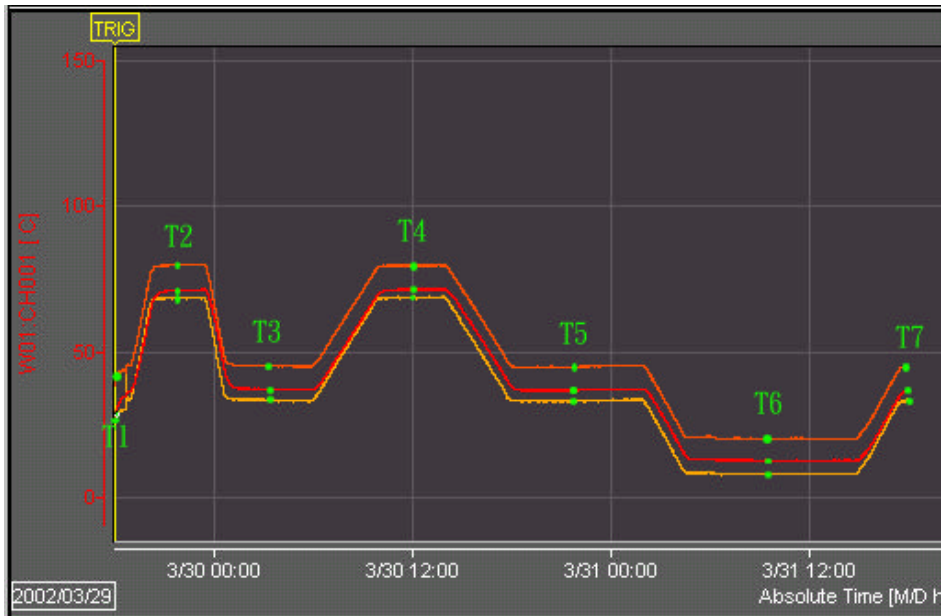


13. Temperature Recorder

13-1 Measuring Accelerometer Position:



13-2 Temperature chart:



Channel	Channel 1	Channel 2	Channel 3
Temp. Stage			
T1 (25)	29.3	42.7	31.9
T2 (60)	68.8	79.9	71.4
T3 (25)	33.6	45.4	37.3
T4 (60)	68.8	79.8	71.5
T5 (25)	33.5	45.2	37.1
T6 (0)	8.4	20.5	12.8
T7 (25)	34.1	45.5	37.1