



AEC-204 Ver.B (HSB-660S) Environment Test Report

Report NO: 04P020002

Issued by:

/

01/19/2004

Rex-Chang
Test Engineer

Date

Reviewed by:

/

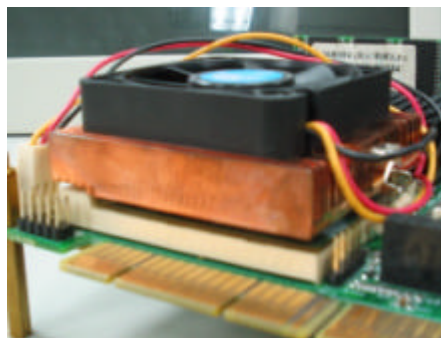
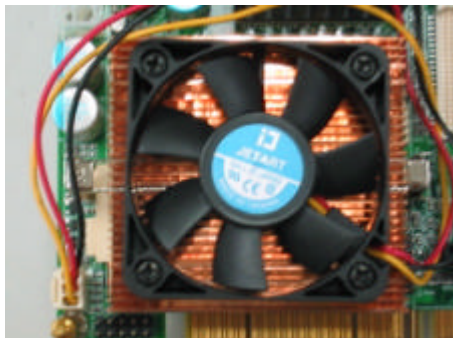
01/19/2004

Wenquan Yang
Manager

Date

1. <i>Test item list</i> -----	2
2. <i>Temperature cycle operation test</i> -----	3
3. <i>High temperature / Humidity storage test</i> -----	5
4. <i>Low temperature storage test</i> -----	6
5. <i>Humidity test</i> -----	7
6. <i>Cold start test</i> -----	8

Num	Item	Spec
1.	Control Box :	AEC-204 Ver.B 4-Slot Half-Size Industrial Wall-mount Chassis
	1. Main Board	AAEON HSB-660S Half-size CPU card (BIOS: 1.0)
	2. CPU	Pentium III / 1.4GHz
	3. Memory	512MB SEITEC PM72V56841CT-6 (SDRAM PC133)
	4. Power Supply	Enhance ENP-1815 SPS 115/230V, 150W (AT Power)
	5. HDD	Maxtor Fireball 3 ATA/133 HDD 40GB
	6.CD-ROM	Quanta Storage SCR-242
	7.CPU Cooler	1759200329



AEC-204 Ver.B 4-Slot Half-Size Industrial Wall-mount Chassis

Test Date: 01-16~18-2004

Test Product: AEC-204 Ver.B 4-Slot Half-Size Industrial Wall-mount Chassis (HSB-660S Rev: A0.2).

Test Site: AAEON QA Internal Lab.

Performed By: Rex Chang

Test Standard:

Reference IEC 68-2-61 Testing procedures
Test Z/ABD: Climatic Sequence Test

Test Equipment:

Programmable Temperature & Humidity Chamber
K.SON. INS. TECH. CORP.
Model: THS-D4H+-100
Date of Calibration: 06/03/03
Serial Number: 1241

Temperature Measurement:

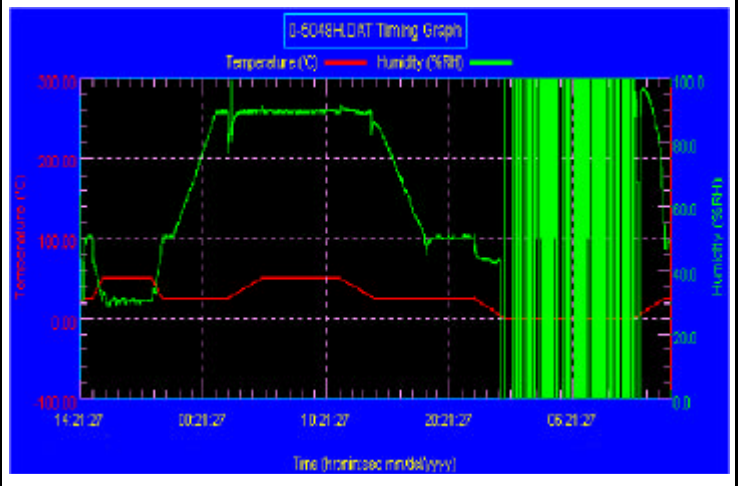
20 Channel Thermal Recorder:
YOKOGAWA Inc,
Model: DA100-13-1D
Date of Calibration: 12/25/03
Serial Number: 12A323190

Temperature & Humidity Cycle Test:

Testing Specification

Step	Temperature ()	Humidity (%RH)	Duration (HH:MM)
1	25	50	00:30
2	25	50	00:30
3	50	30	00:50
4	50	30	04:00
5	25	50	00:50
6	25	50	00:50
7	25	90	03:30
8	25	90	01:00
9	50	90	02:46
10	50	90	06:21
11	25	90	02:46
12	25	50	04:07
13	25	50	03:30
14	25	50	00:30
15	0	0	02:30
16	0	0	10:30
17	25	50	02:30
18	25	50	00:30

Test Curve:



Sample Configuration & Quantity Under Test:

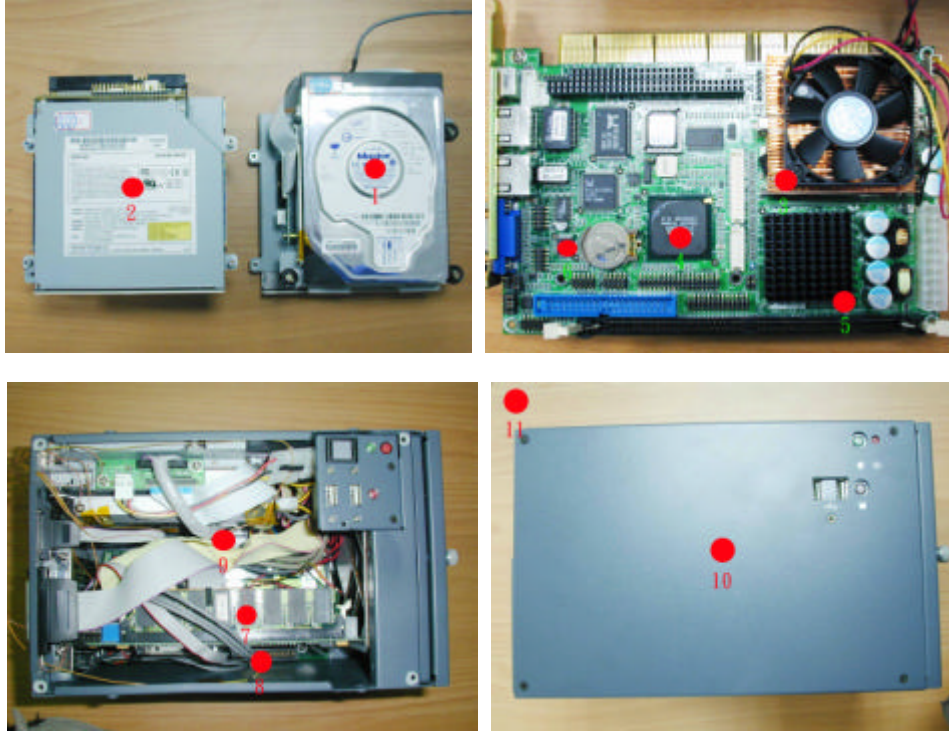
Using one AEC-204 Ver.B 4-Slot Half-Size Industrial Wall-mount Chassis (HSB-660S).

AEC-204 Ver.B 4-Slot Half-Size Industrial Wall-mount Chassis

Temperature Recorder:

Measuring Accelerometer Position:

AEC-204B 4-Slot Half-Size Industrial Wall-mount Chassis



The thermal profile data:

AEC-204 Ver.B

Point	Temp. Stage		
	50	25	0
1. HDD Surface	57.5	32.3	7.7
2. CD-ROM Surface	52.5	27.3	2.6
3. CPU	73.0	47.7	22.4
4. V/A VT82686B Chipset	56.1	31.1	6.1
5. V/A VT8606 Chipset	64.3	39.0	13.7
6. ALC201 AC'97 Audio Codec	65.3	40.2	16.4
7. Memory (2)	57.8	32.9	7.6
8. Inside Air Temperature (1)	53.3	28.1	3.2
9. Inside Air Temperature (2)	52.4	29.3	4.5
10. Control Box. External Surface	51.6	26.6	1.8
11. Chamber Air Temperature	50.1	25.4	0.7

Test Result :

Sample Configuration & Quantity Under Test:

Quantity: 1 (AEC-204 Ver.B)

Passed.

The AEC-204 Ver.B (HSB-660S Rev: A0.2) meets temperature cycle test.

Test Date: 01-13~16-2004

Test Product: AEC-204 Ver.B 4-Slot Half-Size Industrial Wall-mount Chassis (HSB-660S Rev: A0.2).

Test Site: AAEON QA Internal Lab.

Performed By: Rex Chang

Test Standard: Reference IEC 68-2-2 Testing procedures
Test Bb: Dry Heat Test (Non-operation)

Test Equipment:

Programmable Temperature & Humidity Chamber
K.SON. INS. TECH. CORP.
Model: THS-D4L+-100
Date of Calibration: 10/17/03
Serial Number: 2582

Testing Item:

1. Test Temperature: 60
2. Test Times: 48Hrs
3. Test Software: Windows media Player (Video test soft-MPEG form HDD)
4. Test Environment Curve:



Sample Configuration & Quantity Under Test:

Quantity: 1 (AEC-204 Ver.B)

Test Result:

Passed.

The AEC-204 Ver.B (HSB-660S Rev: A0.2) meets High temperature storage test.

Test Date: 01-8~10-2004

Test Product: AEC-204 Ver.B 4-Slot Half-Size Industrial Wall-mount Chassis (HSB-660S Rev: A0.2).

Test Site: AAEON QA Internal Lab.

Performed By: Rex Chang

Test Standard: Reference IEC 68-2-1
Testing procedures Test Ab: Cold Test (Non-operation)

Test Equipment:

Programmable Temperature & Humidity Chamber
K.SON. INS. TECH. CORP.

Model: THS-D4H+-100

Date of Calibration: 10/17/03

Serial Number: 2582

Testing Item:

1. Test Temperature: -20
2. Test Times: 48Hrs
3. Test Software: Windows media Player (Video test soft-MPEG form HDD)
4. Test Environment Curve:



Sample Configuration & Quantity Under Test:

Quantity: 1 (AEC-204 Ver.B)

Test Result:

Passed.

The AEC-204 Ver.B (HSB-660S Rev: A0.2) meets Low temperature storage test

Test Date: 01-11~13-2004

Test Product: AEC-204 Ver.B 4-Slot Half-Size Industrial Wall-mount Chassis (HSB-660S Rev: A0.2).

Test Site: AAEON QA Internal Lab.

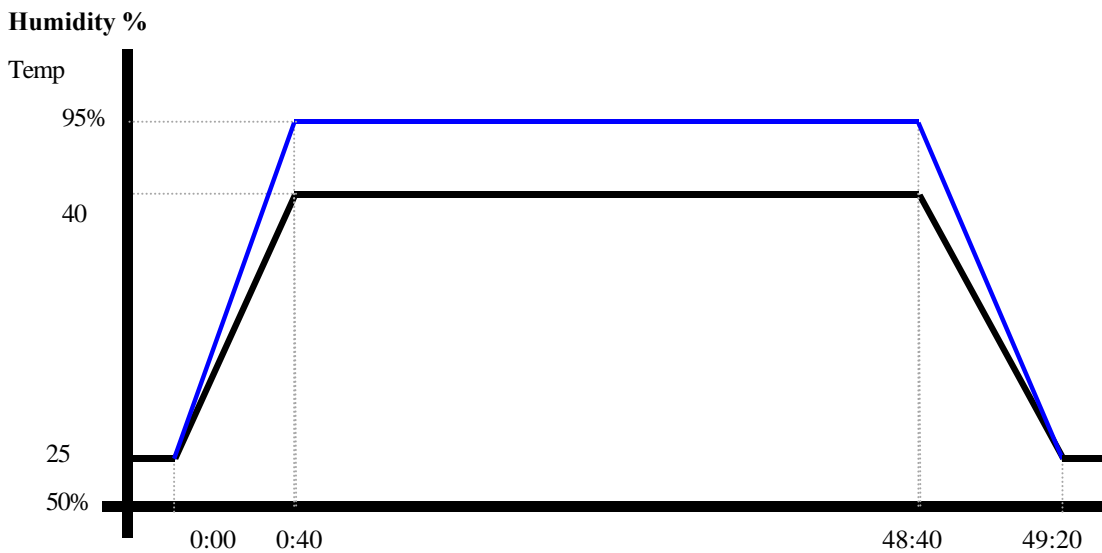
Performed By: Rex Chang

Test Standard: Reference IEC 68-2-3 Testing procedures
Test Ca: Damp heat, steady state (Non-operation)

Test Equipment:
Programmable Temperature & Humidity Chamber
K.SON. INS. TECH. CORP.
Model: THS-D4H+-100
Date of Calibration: 06/03/03
Serial Number: 1241

Testing Item:

1. Test Temperature: 40
2. Test Humidity : 95%RH
3. Test Times: 48Hrs
4. Test Software : Windows media Player (Video test soft-MPEG form HDD)
5. Test Environment Curve:



Sample Configuration & Quantity Under Test:
Quantity: 1 (AEC-204 Ver.B)

Test Result:

Passed.

The AEC-204 Ver.B (HSB-660S Rev: A0.2) meets Humidity test

Test Date: 01-06-2004

Test Product: AEC-204 Ver.B 4-Slot Half-Size Industrial Wall-mount Chassis (HSB-660S Rev: A0.2).

Test Site: AAEON QA Internal Lab.

Performed By: Rex Chang

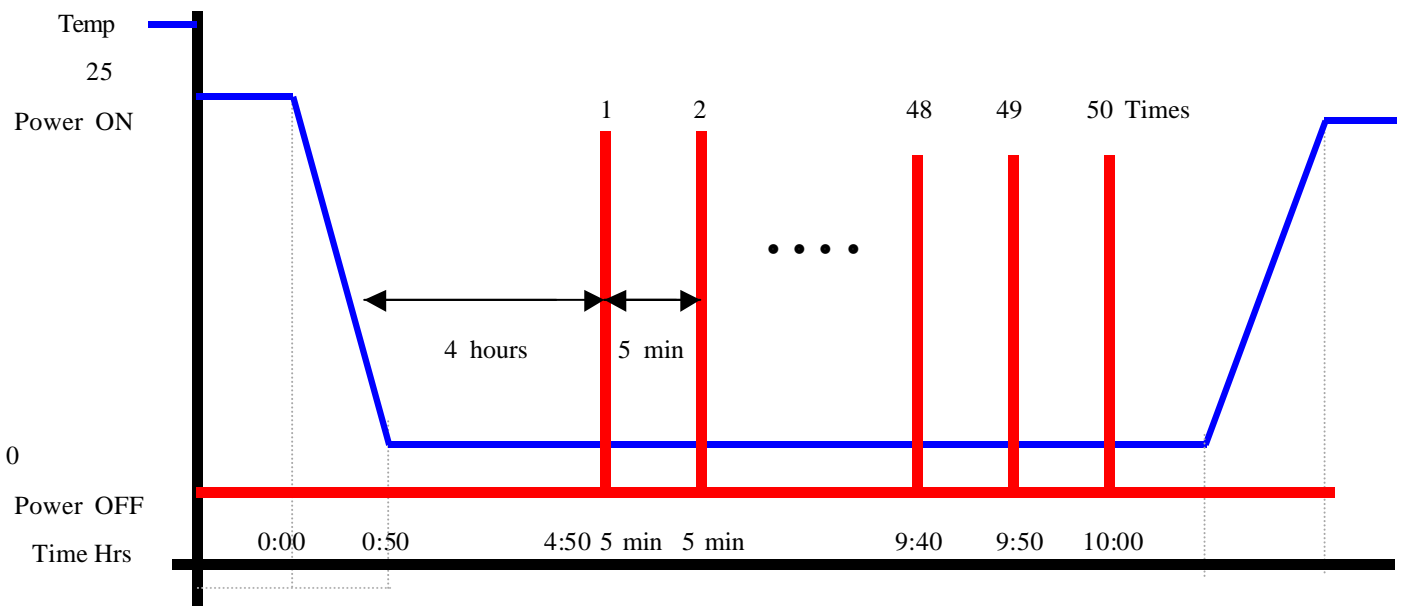
Test Standard: Reference IEC 68-2-1 Testing procedures
Test Ab: Cold Test

Test Equipment:

Programmable Temperature & Humidity Chamber
K.SON. INS. TECH. CORP.
Model: THS-D4H+-100
Date of Calibration: 06/03/03
Serial Number: 1241

Test Condition:

1. Test Temperature: 0
2. Test Times: 5 Hours or 50 times of ON/OFF
 - (1) Power off for 4 hours before 1' st power on. Then once complete boot, power off immediately.
 - (2) After 5 min later power on again and wait until booting is completed.
 - (3) Repeat (2) for around 4:50
 - (4) Power off then wait for 5 min before final power on operation.
3. Number of test: 50 times
4. Test Software: Windows 2000
5. Test Environment Curve:





Cold Start test

Report NO. 04P020002

AEC-204 Ver.B 4-Slot Half-Size Industrial Wall-mount Chassis

Sample Configuration & Quantity Under Test:

Quantity: 1 (AEC-204 Ver.B)

Test Result:

Passed.

The AEC-204 Ver.B (HSB-660S Rev: A0.2) meets Cold start test



AEC-204 Ver.B (SBC-657)

AC & DC Power

Environment Test Report

Report NO: 04P020004

Issued by:

Rex-Chang

/

03/04/2004

Test Engineer

Date

Reviewed by:

Wenyuan Yang

/

03/04/2004

Manager

Date

1. Test item list -----	2
2 Temperature cycle operation test -----	3
3. High temperature / Humidity storage test -----	5
4. Low temperature storage test -----	6
5. Humidity test -----	7

Sample 1:

Num	Item	Spec
1.	Control Box :	AEC-204 Ver.B 4-Slot Half-Size Industrial Wall-mount Chassis
	1. Main Board	AAEON SBC-657 Half-size CPU card (BIOS: SBC-657/HSB-657I 1.3)
	2. CPU	Onboard VIA C3 Eden / 667MHz
	3. Memory	512MB HITACHI HB52RF648DC-75B (PC133 SO-DIMM)
	4. Power Supply	Enhance ENP-1815 SPS 115/230V, 150W (AC Power)
	5. Backplane	AAEON BP-204SS-P1-A11 (BP-204PSA Rev. A1.1)
	6. HDD	Maxtor Fireball 3 ATA/133 HDD 40GB
	7.CD-ROM	Quanta Storage SCR-242

Sample 2:

Num	Item	Spec
1.	Control Box :	AEC-204 Ver.B 4-Slot Half-Size Industrial Wall-mount Chassis
	1. Main Board	AAEON SBC-657 Half-size CPU card (BIOS: SBC-657/HSB-657I 1.3)
	2. CPU	Onboard VIA C3 Eden / 667MHz
	3. Memory	512MB HITACHI HB52RF648DC-75B (PC133 SO-DIMM)
	4. Power Supply	MAGIC POWER MPD-8071-S / 72W (DC 24V)
	5. Backplane	AAEON BP-204SS-P1-A11 (BP-204PSA Rev. A1.1)
	6. HDD	Maxtor Fireball 3 ATA/133 HDD 40GB
	7.CD-ROM	Quanta Storage SCR-242

AEC-204 Ver.B 4-Slot Half-Size Industrial Wall-mount Chassis

Test Date: 03-01~03-2004

Test Product: AEC-204 Ver.B 4-Slot Half-Size Industrial Wall-mount Chassis (SBC-657 Rev: A1.0).

Test Site: AAEON QA Internal Lab.

Performed By: Rex Chang

Test Standard:

Reference IEC 68-2-61 Testing procedures
Test Z/ABD: Climatic Sequence Test

Test Equipment:

Programmable Temperature & Humidity Chamber
K.SON. INS. TECH. CORP.

Model: THS-D4H+-100
Date of Calibration: 06/03/03
Serial Number: 1241

Temperature Measurement:

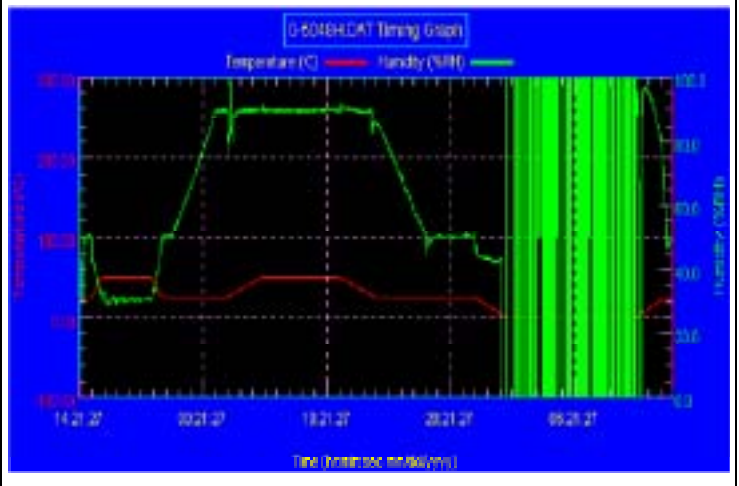
20 Channel Thermal Recorder:
YOKOGAWA Inc,
Model: DA100-13-1D
Date of Calibration: 12/25/03
Serial Number: 12A323190

Temperature & Humidity Cycle Test:

Testing Specification

Step	Temperature ()	Humidity (%RH)	Duration (HH:MM)
1	25	50	00:30
2	25	50	00:30
3	50	30	00:50
4	50	30	04:00
5	25	50	00:50
6	25	50	00:50
7	25	90	03:30
8	25	90	01:00
9	50	90	02:46
10	50	90	06:21
11	25	90	02:46
12	25	50	04:07
13	25	50	03:30
14	25	50	00:30
15	0	0	02:30
16	0	0	10:30
17	25	50	02:30
18	25	50	00:30

Test Curve:



Sample Configuration & Quantity Under Test:

Using one AEC-204 Ver.B 4-Slot Half-Size Industrial Wall-mount Chassis (SBC-657).

AEC-204 Ver.B 4-Slot Half-Size Industrial Wall-mount Chassis

Temperature Recorder:

Measuring Accelerometer Position:

AEC-204B 4-Slot Half-Size Industrial Wall-mount Chassis (DC Power)



Thermal profile data:

AEC-204 Ver.B (DC Power)

Point	Temp. Stage		
	50	25	0
1. HDD Surface	55.2	30.8	6.3
2. CD-ROM Surface	52.2	27.6	2.9
3. CPU	60.3	35.3	10.1
4. V/A VT82686B Chipset	59.8	35.3	10.4
5. Heat Sink Surface	58.0	33.1	8.0
6. V/A VT8606 Chipset	59.1	34.7	9.8
7. Memory	62.3	37.6	12.6
8. Inside Air Temperature (1)	52.5	27.9	2.9
9. Inside Air Temperature (2)	53.4	28.7	3.7
10. Control Box. External Surface	51.5	26.9	2.1
11. Chamber Air Temperature	50.3	25.6	0.8

Test Result :

Sample Configuration & Quantity Under Test:

Quantity: 2

1. AEC-204 Ver.B (AC Power).
2. AEC-204 Ver.B (DC Power).

Passed.

Test Date: 02-27~03-01-2004

Test Product: AEC-204 Ver.B 4-Slot Half-Size Industrial Wall-mount Chassis (SBC-657 Rev: A1.0).

Test Site: AAEON QA Internal Lab.

Performed By: Rex Chang

Test Standard: Reference IEC 68-2-2 Testing procedures
Test Bb: Dry Heat Test (Non-operation)

Test Equipment:

Programmable Temperature & Humidity Chamber
K.SON. INS. TECH. CORP.

Model: THS-D4L+-100

Date of Calibration: 10/17/03

Serial Number: 2582

Testing Item:

1. Test Temperature: 60
2. Test Times: 48Hrs
3. Test Software: Windows media Player (Video test soft-MPEG form HDD)
4. Test Environment Curve:



Sample Configuration & Quantity Under Test:

Quantity: 1 (AEC-204 Ver.B with DC power)

Test Result:

Passed.

Test Date: 02-25~27-2004

Test Product: AEC-204 Ver.B 4-Slot Half-Size Industrial Wall-mount Chassis (SBC-657 Rev: A1.0).

Test Site: AAEON QA Internal Lab.

Performed By: Rex Chang

Test Standard: Reference IEC 68-2-1
Testing procedures Test Ab: Cold Test (Non-operation)

Test Equipment:

Programmable Temperature & Humidity Chamber
K.SON. INS. TECH. CORP.

Model: THS-D4H+-100

Date of Calibration: 10/17/03

Serial Number: 2582

Testing Item:

1. Test Temperature: -20
2. Test Times: 48Hrs
3. Test Software: Windows media Player (Video test soft-MPEG form HDD)
4. Test Environment Curve:



Sample Configuration & Quantity Under Test:

Quantity: 1 (AEC-204 Ver.B with DC power)

Test Result:

Passed.

Test Date: 02-27~03-01-2004

Test Product: AEC-204 Ver.B 4-Slot Half-Size Industrial Wall-mount Chassis (SBC-657 Rev: A1.0).

Test Site: AAEON QA Internal Lab.

Performed By: Rex Chang

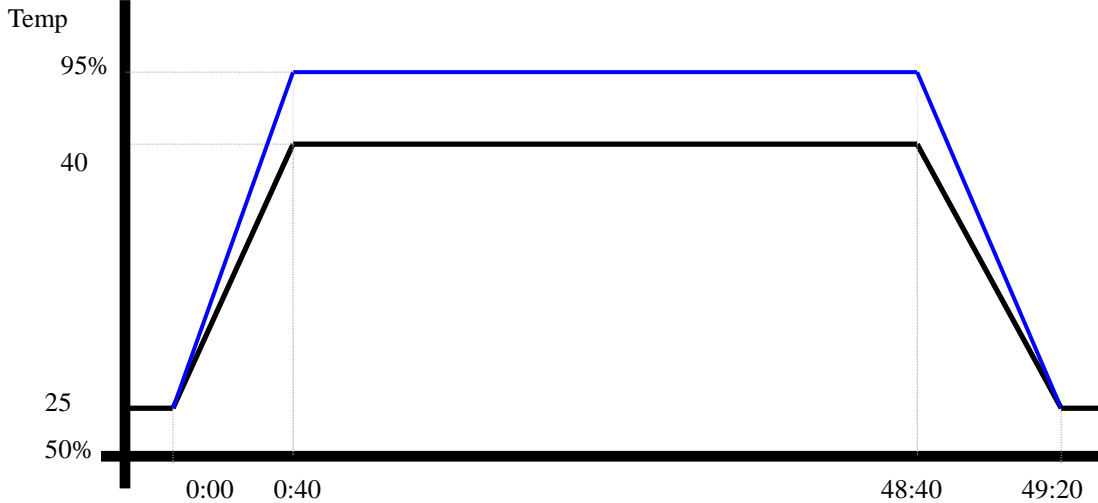
Test Standard: Reference IEC 68-2-3 Testing procedures
Test Ca: Damp heat, steady state (Non-operation)

Test Equipment:
Programmable Temperature & Humidity Chamber
K.SON. INS. TECH. CORP.
Model: THS-D4H+-100
Date of Calibration: 06/03/03
Serial Number: 1241

Testing Item:

1. Test Temperature: 40
2. Test Humidity : 95%RH
3. Test Times: 48Hrs
4. Test Software : Windows media Player (Video test soft-MPEG form HDD)
5. Test Environment Curve:

Humidity %



Sample Configuration & Quantity Under Test:
Quantity: 1 (AEC-204 Ver.B with DC power)

Test Result:

Passed.

Test Date: 02-25~26-2004

Test Product: AEC-204 Ver.B 4-Slot Half-Size Industrial Wall-mount Chassis (SBC-657 Rev: A1.0).

Test Site: AAEON QA Internal Lab.

Performed By: Rex Chang

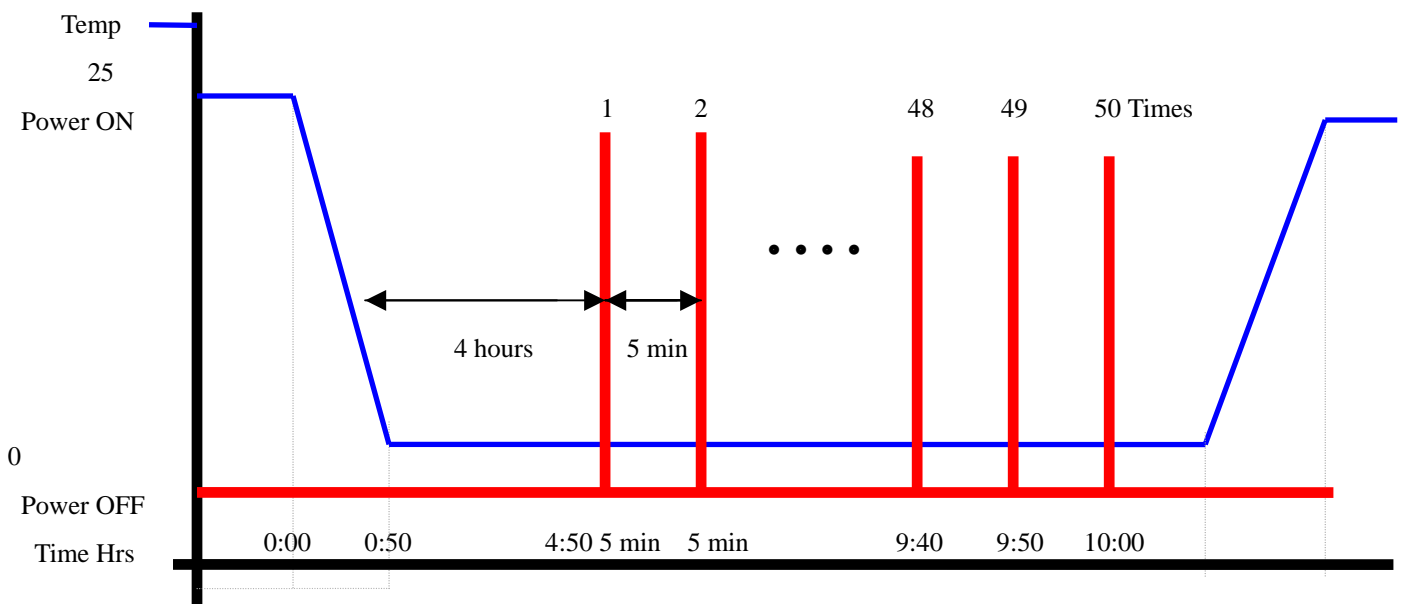
Test Standard: Reference IEC 68-2-1 Testing procedures
Test Ab: Cold Test

Test Equipment:

Programmable Temperature & Humidity Chamber
K.SON. INS. TECH. CORP.
Model: THS-D4H+-100
Date of Calibration: 06/03/03
Serial Number: 1241

Test Condition:

1. Test Temperature: 0
2. Test Times: 5 Hours or 50 times of ON/OFF
 - (1) Power off for 4 hours before 1st power on. Then once complete boot, power off immediately.
 - (2) After 5 min later power on again and wait until booting is completed.
 - (3) Repeat (2) for around 4:50
 - (4) Power off then wait for 5 min before final power on operation.
3. Number of test: 50 times
4. Test Software: Windows 2000
5. Test Environment Curve:





Cold Start test

Report NO. 04P020004

AEC-204 Ver.B 4-Slot Half-Size Industrial Wall-mount Chassis

Sample Configuration & Quantity Under Test:

Quantity: 2

1. AEC-204 Ver.B (AC Power)
2. AEC-204 Ver.B (DC Power)

Test Result:

Passed.



AEC-204 Ver.B (HSB-460I)

AC & DC Power

Environment Test Report

Report NO: 04P020005

Issued by:

Rex-Chang

/

03/31/2004

Test Engineer

Date

Reviewed by:

Wenyuan Yang

/

03/31/2004

Manager

Date

1. Test item list -----	2
2 Temperature cycle operation test -----	3
3. High temperature / Humidity storage test -----	5
4. Low temperature storage test -----	6
5. Humidity test -----	7
6. Cold Start -----	8

Sample 1:

Num	Item	Spec
1.	Control Box :	AEC-204 Ver.B 4-Slot Half-Size Industrial Wall-mount Chassis
	1. Main Board	AAEON HSB-460I A1.0 Half-size CPU card (BIOS: HSB-460I 1.0A)
	2. CPU	Onboard Geode GX1 / 300MHz
	3. Memory	256MB HYNIX HY57V28820HCT-H (PC133 SDRAM)
	4. Power Supply	Enhance ENP-1815 SPS 115/230V, 150W (AC Power)
	5. Backplane	AAEON BP-204SI-A13 (BP-204 ISA Bus Backplan Rev.A1.3)
	6. HDD	Maxtor Fireball 3 ATA/133 HDD 40GB
	7.CD-ROM	Quanta Storage SCR-242

Sample 2:

Num	Item	Spec
1.	Control Box :	AEC-204 Ver.B 4-Slot Half-Size Industrial Wall-mount Chassis
	1. Main Board	AAEON HSB-460I A1.0 Half-size CPU card (BIOS: HSB-460I 1.0A)
	2. CPU	Onboard Geode GX1 / 300MHz
	3. Memory	256MB HYNIX HY57V28820HCT-H (PC133 SDRAM)
	4. Power Supply	MAGIC POWER MPD-8071-S / 72W (DC 24V)
	5. Backplane	AAEON BP-204SI-A13 (BP-204 ISA Bus Backplan Rev.A1.3)
	6. HDD	Maxtor Fireball 3 ATA/133 HDD 40GB
	7.CD-ROM	Quanta Storage SCR-242

AEC-204 Ver.B 4-Slot Half-Size Industrial Wall-mount Chassis

Test Date: 03-18~21-2004 (AEC-204 Ver.B DC Power)
 03-26~29-2004 (AEC-204 Ver.B AC Power)

Test Product: AEC-204 Ver.B 4-Slot Half-Size Industrial Wall-mount Chassis (HSB-460I Rev: A1.0).

Test Site: AAEON QA Internal Lab.

Performed By: Rex Chang

Test Standard:

Reference IEC 68-2-61 Testing procedures
 Test Z/ABD: Climatic Sequence Test

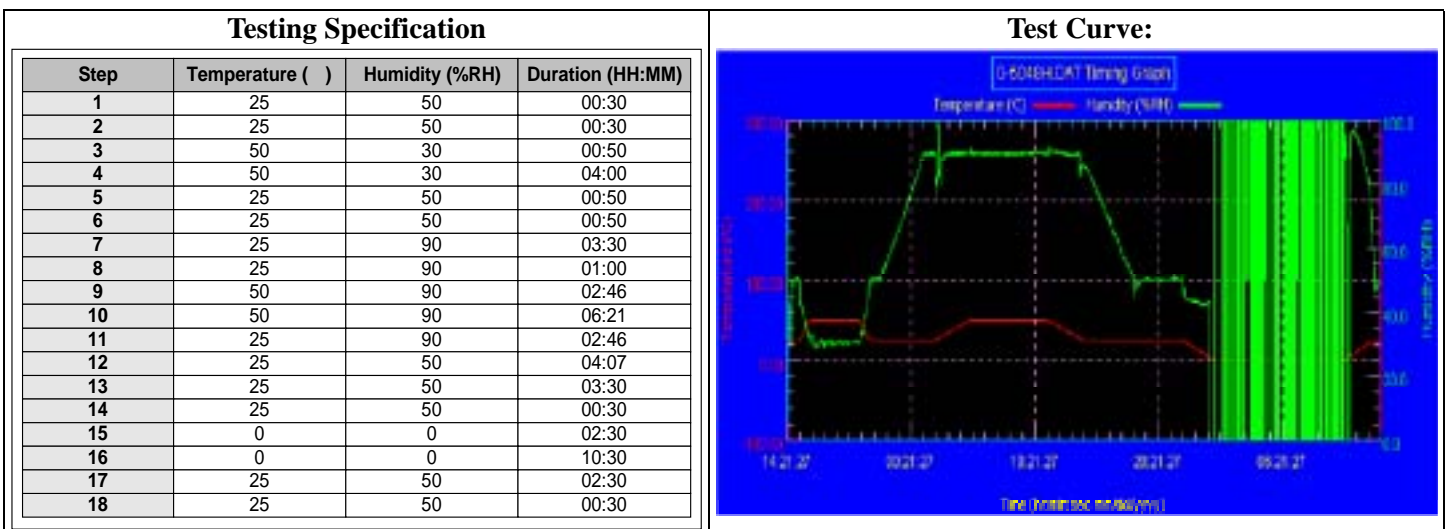
Test Equipment:

Programmable Temperature & Humidity Chamber
 K.SON. INS. TECH. CORP.
 Model: THS-D4H+-100
 Date of Calibration: 06/03/03
 Serial Number: 1241

Temperature Measurement:

20 Channel Thermal Recorder :
 YOKOGAWA Inc,
 Model: DA100-13-1D
 Date of Calibration: 12/25/03
 Serial Number: 12A323190

Temperature & Humidity Cycle Test:



Sample Configuration & Quantity Under Test:

Using one AEC-204 Ver.B 4-Slot Half-Size Industrial Wall-mount Chassis (HSB-460I).

AEC-204 Ver.B 4-Slot Half-Size Industrial Wall-mount Chassis**Temperature Recorder:**

Measuring Accelerometer Position:

AEC-204B 4-Slot Half-Size Industrial Wall-mount Chassis (AC Power)**Thermal profile data:****AEC-204 Ver.B (AC Power)**

Point	Temp. Stage		
	50	25	0
1. HDD Surface	51.5	27.1	2.1
2. CD-ROM Surface	54.6	30.2	5.8
3. CPU	55.1	30.9	6.3
4. CS5530A Chipset	61.4	36.8	11.9
5. Memory	53.7	29.2	4.3
6. Inside Air Temperature (1)	51.3	26.8	1.9
7. Inside Air Temperature (2)	52.2	27.5	2.7
8. Control Box. External Surface	50.9	26.3	1.5
9. Chamber Air Temperature	50.5	25.8	1.1

Test Result :**Sample Configuration & Quantity Under Test:**

Quantity: 2

1. AEC-204 Ver.B (AC Power).
2. AEC-204 Ver.B (DC Power).

Passed.

Test Date: 03-15~17-2004

Test Product: AEC-204 Ver.B 4-Slot Half-Size Industrial Wall-mount Chassis (HSB-460I Rev: A1.0).

Test Site: AAEON QA Internal Lab.

Performed By: Rex Chang

Test Standard: Reference IEC 68-2-2 Testing procedures
Test Bb: Dry Heat Test (Non-operation)

Test Equipment:

Programmable Temperature & Humidity Chamber
K.SON. INS. TECH. CORP.

Model: THS-D4L+-100

Date of Calibration: 10/17/03

Serial Number: 2582

Testing Item:

1. Test Temperature: 60
2. Test Times: 48Hrs
3. Test Software: Windows media Player (Video test soft-MPEG form HDD)
4. Test Environment Curve:



Sample Configuration & Quantity Under Test:

Quantity: 1 (AEC-204 Ver.B with DC power)

Test Result:

Passed.

Test Date: 03-12~14-2004

Test Product: AEC-204 Ver.B 4-Slot Half-Size Industrial Wall-mount Chassis (HSB-460I Rev: A1.0).

Test Site: AAEON QA Internal Lab.

Performed By: Rex Chang

Test Standard: Reference IEC 68-2-1
Testing procedures Test Ab: Cold Test (Non-operation)

Test Equipment:

Programmable Temperature & Humidity Chamber
K.SON. INS. TECH. CORP.

Model: THS-D4H+-100

Date of Calibration: 10/17/03

Serial Number: 2582

Testing Item:

1. Test Temperature: -20
2. Test Times: 48Hrs
3. Test Software: Windows media Player (Video test soft-MPEG form HDD)
4. Test Environment Curve:



Sample Configuration & Quantity Under Test:

Quantity: 1 (AEC-204 Ver.B with DC power)

Test Result:

Passed.

Test Date: 03-09~11-2004

Test Product: AEC-204 Ver.B 4-Slot Half-Size Industrial Wall-mount Chassis (HSB-460I Rev: A1.0).

Test Site: AAEON QA Internal Lab.

Performed By: Rex Chang

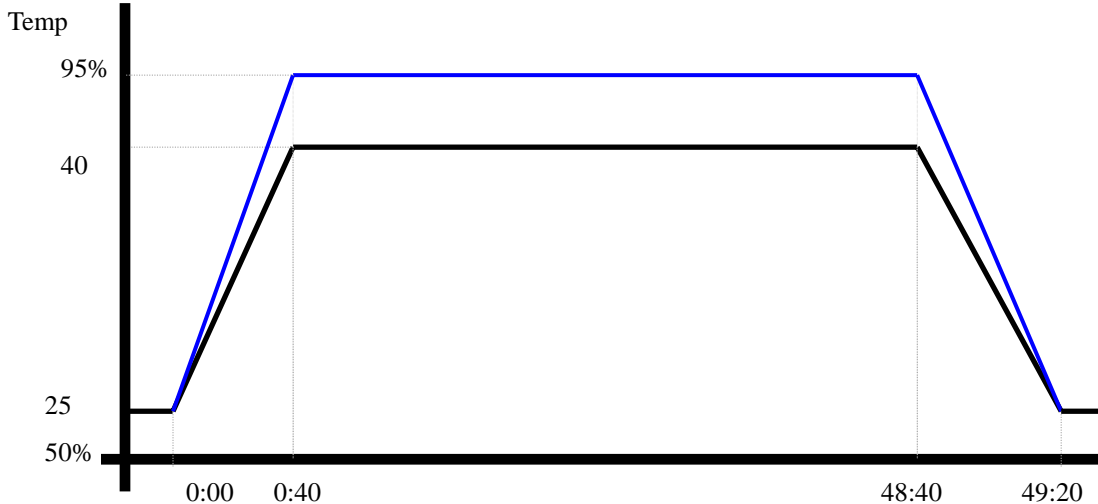
Test Standard: Reference IEC 68-2-3 Testing procedures
Test Ca: Damp heat, steady state (Non-operation)

Test Equipment:
Programmable Temperature & Humidity Chamber
K.SON. INS. TECH. CORP.
Model: THS-D4H+-100
Date of Calibration: 06/03/03
Serial Number: 1241

Testing Item:

1. Test Temperature: 40
2. Test Humidity: 95%RH
3. Test Times: 48Hrs
4. Test Software: Windows media Player (Video test soft-MPEG form HDD)
5. Test Environment Curve:

Humidity %



Sample Configuration & Quantity Under Test:
Quantity: 1 (AEC-204 Ver.B with DC power)

Test Result:

Passed.

AEC-204 Ver.B 4-Slot Half-Size Industrial Wall-mount Chassis

Test Date: 03-11~12-2004 (AEC-204 Ver.B DC Power)
03-30~31-2004 (AEC-204 Ver.B AC Power)

Test Product: AEC-204 Ver.B 4-Slot Half-Size Industrial Wall-mount Chassis (HSB-460I Rev: A1.0).

Test Site: AAEON QA Internal Lab.

Performed By: Rex Chang

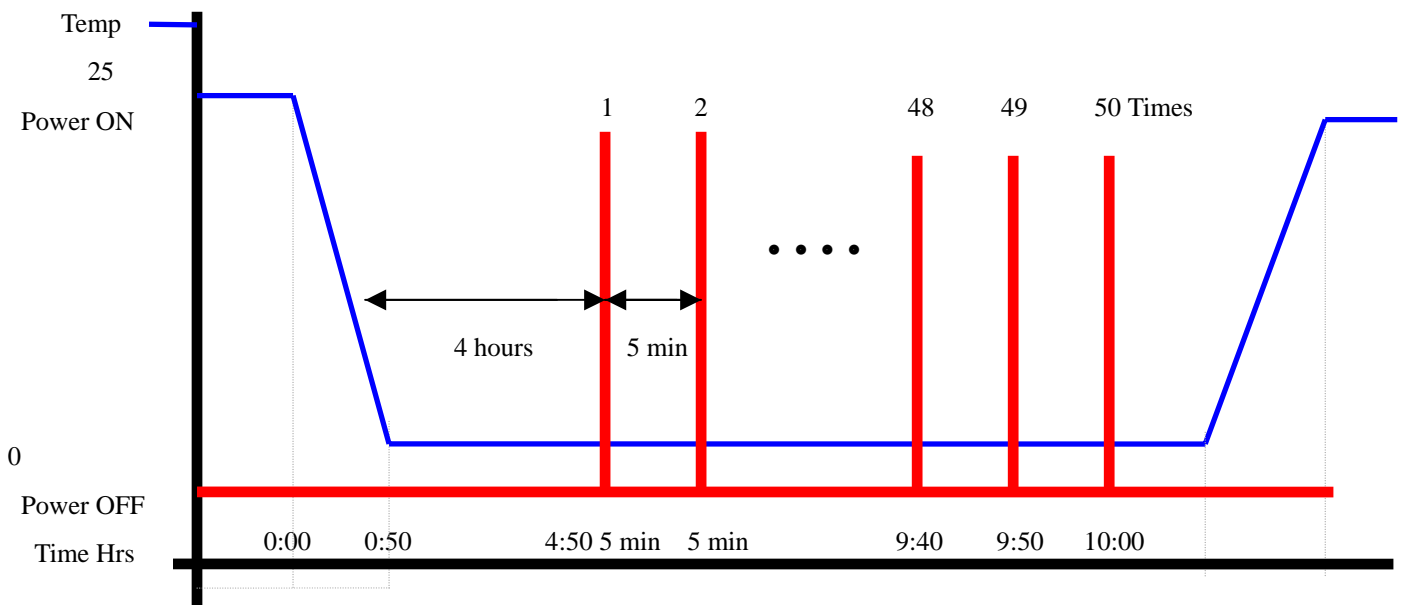
Test Standard: Reference IEC 68-2-1 Testing procedures
Test Ab: Cold Test

Test Equipment:

Programmable Temperature & Humidity Chamber
K.SON. INS. TECH. CORP.
Model: THS-D4H+-100
Date of Calibration: 06/03/03
Serial Number: 1241

Test Condition:

1. Test Temperature: 0
2. Test Times: 5 Hours or 50 times of ON/OFF
 - (1) Power off for 4 hours before 1' st power on. Then once complete boot, power off immediately.
 - (2) After 5 min later power on again and wait until booting is completed.
 - (3) Repeat (2) for around 4:50
 - (4) Power off then wait for 5 min before final power on operation.
3. Number of test: 50 times
4. Test Software: Windows 2000
5. Test Environment Curve:





Cold Start test

Report NO. 04P020005

AEC-204 Ver.B 4-Slot Half-Size Industrial Wall-mount Chassis

Sample Configuration & Quantity Under Test:

Quantity: 2

1. AEC-204 Ver.B (AC Power)
2. AEC-204 Ver.B (DC Power)

Test Result:

Passed.