

# RTC-700T

(Non Packaging / Operating Mode)

## Drop Test Report

Report NO: 12R030004

Summary	<p><input checked="" type="checkbox"/> <b>Pass</b></p> <p><input type="checkbox"/> <b>Fail</b></p> <p>Note : There is/are ____ defect(s) not list in the report, please check it in the DTS Website.</p> <p><input type="checkbox"/> <b>Pass with Deviation</b></p> <p>Comment: _____</p>
---------	---

Issue date

2012-12-20

Approval

Tom Lin

Test Engineer

Rex Chang

# Test item list

---

- 1. *Test item list* ----- 2
- 2. *Configuration of EUT* ----- 3
- 3. *Non-packaging / operation drop test* ----- 4

## Testing Result

Num	Test item list	Result	Remark
1	Non-packaging / operating drop test	Pass	

# Configuration of EUT

<b>Test Product: RTC-700T</b>		
<b>Sample Configuration &amp; Quantity Under Test:</b>		
<b>Num</b>	<b>Item</b>	<b>Spec</b>
RTC-700T(with 3G Module)		
1.	TABLET PC	RTC-700T
	1. CPU	Intel® Oka Trail [Z670] / 1.5GHz
	2. Memory	DDR2 1GB SDRAM / Hynix.H5PS1G83EFR-S6C
	3. LCD Monitor	7" WXGA ( 1024 x 600) TFT LCD with Projected Capacitive Touch screen panel
	4. Audio Codec	REALTEK.ALC662-GR
	5.GPS	u-blox AMY-5M
	6.WiFi / Bluetooth	FANGTEC RTL8188CUS-BC8_WB
	7.3G Module	HuaWei.EM820W
	8.mSATA	Intel® SSDMAEMC040G2
	9.O.S..	Windows 7
2.	Battery	Lithium-Polymer high capacity battery (27.3WHr), 6 Hours Battery Life.
3.	AC Adapter	L.T.E. LTE24E-S2-2 AC Adapter

# Drop Test

**Test Date:** 12-18-2012

**Test Product:** RTC-700T

**Test Site:** AAEON QE Dept.

**Test Standard:**

Reference MIL-STD 810G Method 516.6 Procedure IV. Transit drop test.

**Test Equipment:**

Drop Tester

KING DESIGN Co. LTD.

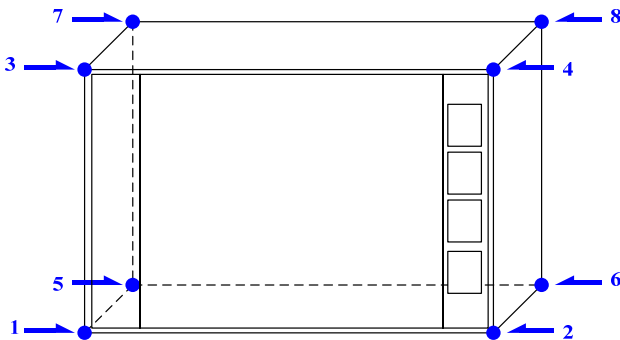
Model: KD-128A

Serial Number: UU110099190

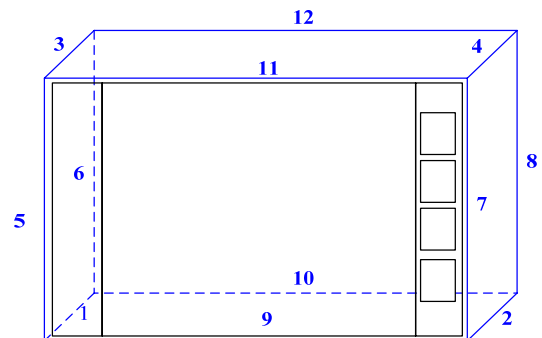
**Test Condition:**

1. Unit is Operating
2. Test Environment: Room Temperature.
3. Test Procedure: 122cm drop on the 2 inches plywood over concrete
4. Test Phase: 8 corners. 12 edges. 6 faces (total of 26 drops)
5. Test cycle: 1 cycle
6. Test High: 122cm
7. Test Weight: 0.69Kg
8. Sample Quantity: 2 unit
9. Test Drawing:

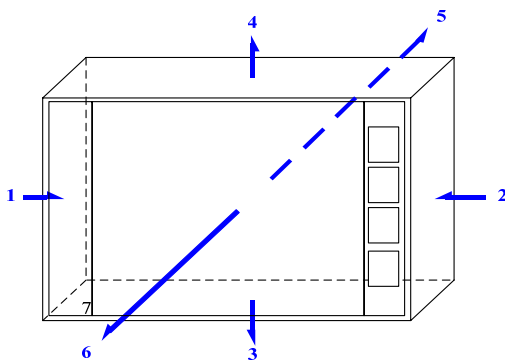
**Corners define**



**Edges define**



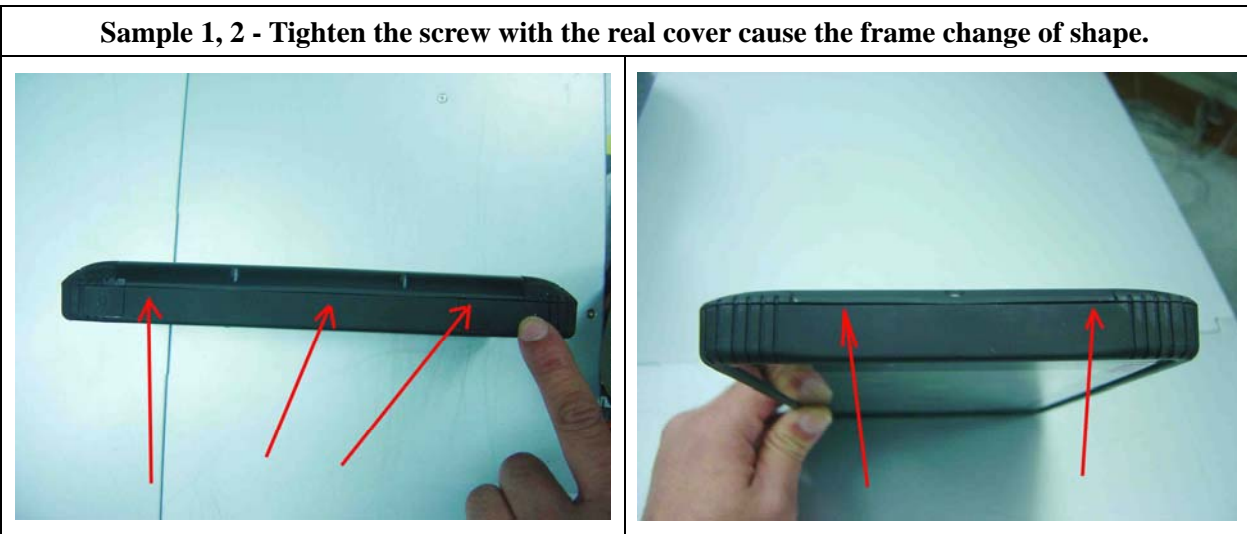
**Faces define**



# Drop Test

## Test Result:

### Before test:

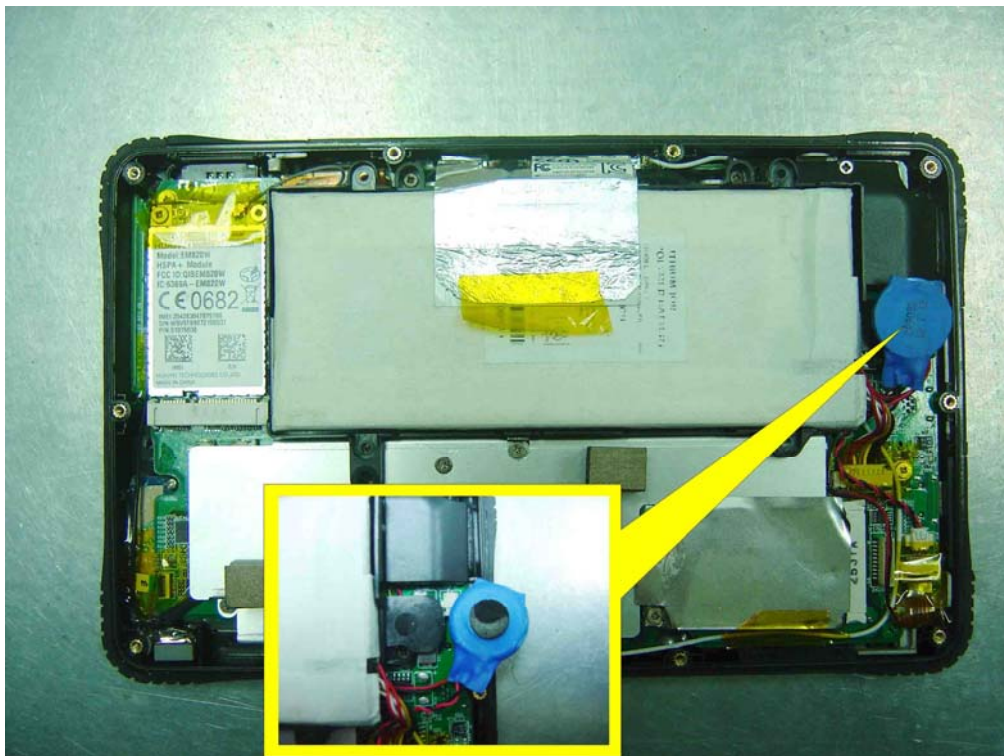


### During Test:

Test Item	8 corners	12 edges	6 faces	Note
Sample No.				
Sample 1	Pass	Fail	---	Note 1

### Note(\*):

- The system has noise when the test unit dropped with edge 3. the result is loose with the battery double sticker.



# Drop Test

Test Item Sample No.	8 corners	10 edges	6 faces	Note
Sample 2	---	Pass	Pass	Note 1, 2

Note(\*):

1. The test sample 1 failed with edge 3, next step is test sample 2 with edge 3.
2. The test system shut down suddenly when the test unit dropped with edge 6, the re-start unit work normally.



## After test:

1. Observation with our frame is no any defect. There is no any loose with antenna and part disconnect.
2. Turn on the power and check the 3G, camera, video microphone, WiFi, light-sensor, Bluetooth, GPS, HDMI, Micro SD storage, screen rotation, Hot key, USB function work correct under WIN 7.