



**AAEON Technology INC.**  
ISO-9001/ISO-14001 Certified  
Industrial Automation PCs

# OPD-217A

## Drop Test Report

Issued by:

\_\_\_\_\_  
JACKSON CHEN  
ME Engineer

/

03/24/2003

\_\_\_\_\_  
Date

Reviewed by:

\_\_\_\_\_  
J.F LIN  
ME Manager

/

03/24/2003

\_\_\_\_\_  
Date

1. Test Product: **17" Open Display Monitors**

2. Model Name: OPD-217A

3. Test Date: 03/24/2003

4. Test Site: AAEON QA Internal Lab.

5. Test Equipment

Type	MFR	Model Number	Serial Number	Last CAL.
Drop Tester	King Design	KD-128A	R2110086389	N/A
Weight Scale	SAN HO Scales Co., LTD.	EW-120K	NMJL0449	10/03/01

6. Test Specification:

Parameters	Targets
EUT Weight	15.4kg
Drop Height	92 cm
Drop Onto	1 corner, 3 edges & 6 faces

7. Test Condition

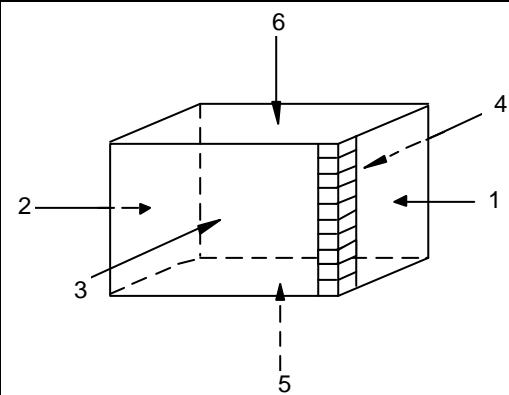
Temperature: 20 ± 2

Humidity: 60 ± 20%RH

Sample Package: 1 unit in double-package.



8. Direction Definition



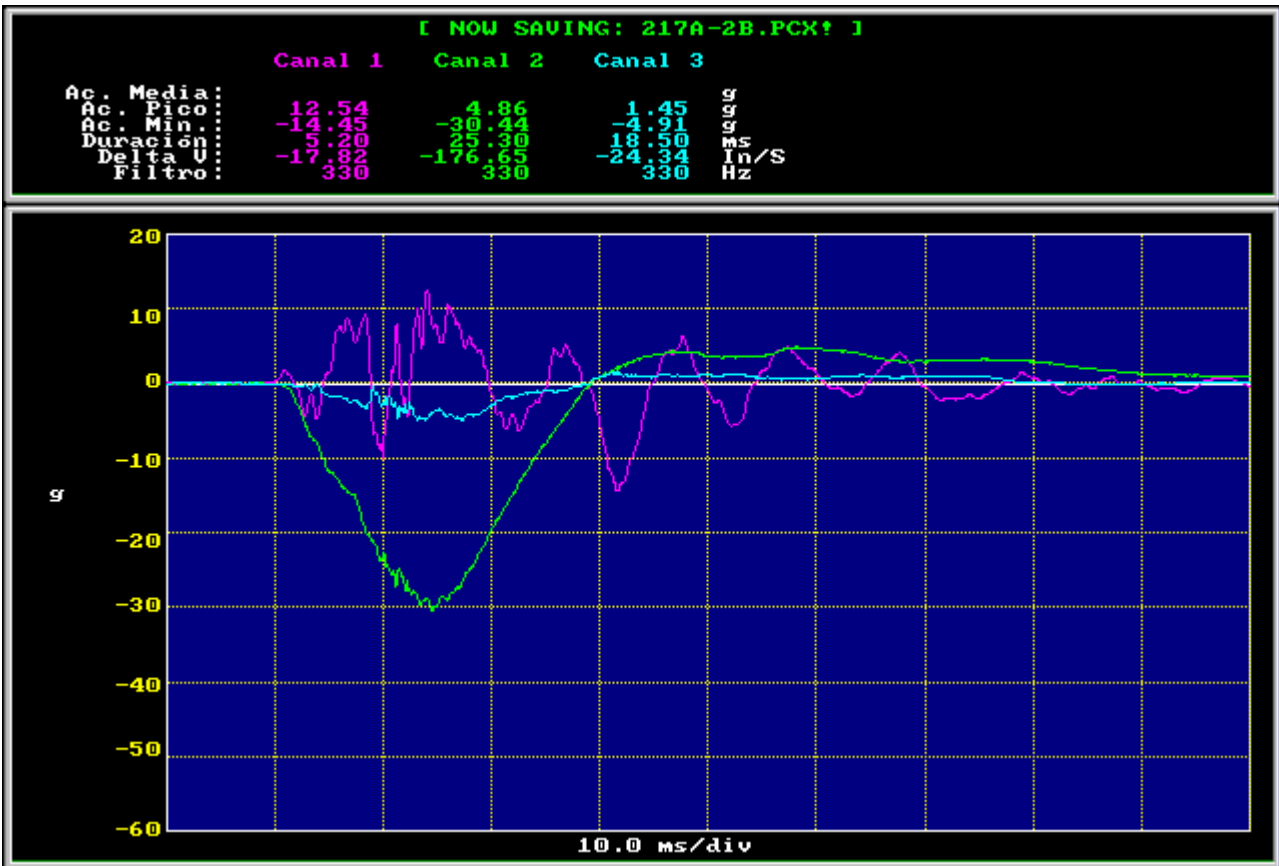
<b>1</b>	The 1-3-5 Corner	Corner
<b>2</b>	The shortest edge radiating from that corner	Edge
<b>3</b>	The next longest edge radiating from that corner	Edge
<b>4</b>	The longest edge radiating from that corner	Edge
<b>5</b>	Flat on one of the smallest faces	Flat
<b>6</b>	Flat on one of the opposite small faces	Flat
<b>7</b>	Flat on one of the medium faces	Flat
<b>8</b>	Flat on one of the opposite medium faces	Flat
<b>9</b>	Flat on one of the largest faces	Flat
<b>10</b>	Flat on one of the opposite largest faces	Flat

9. Test Result:

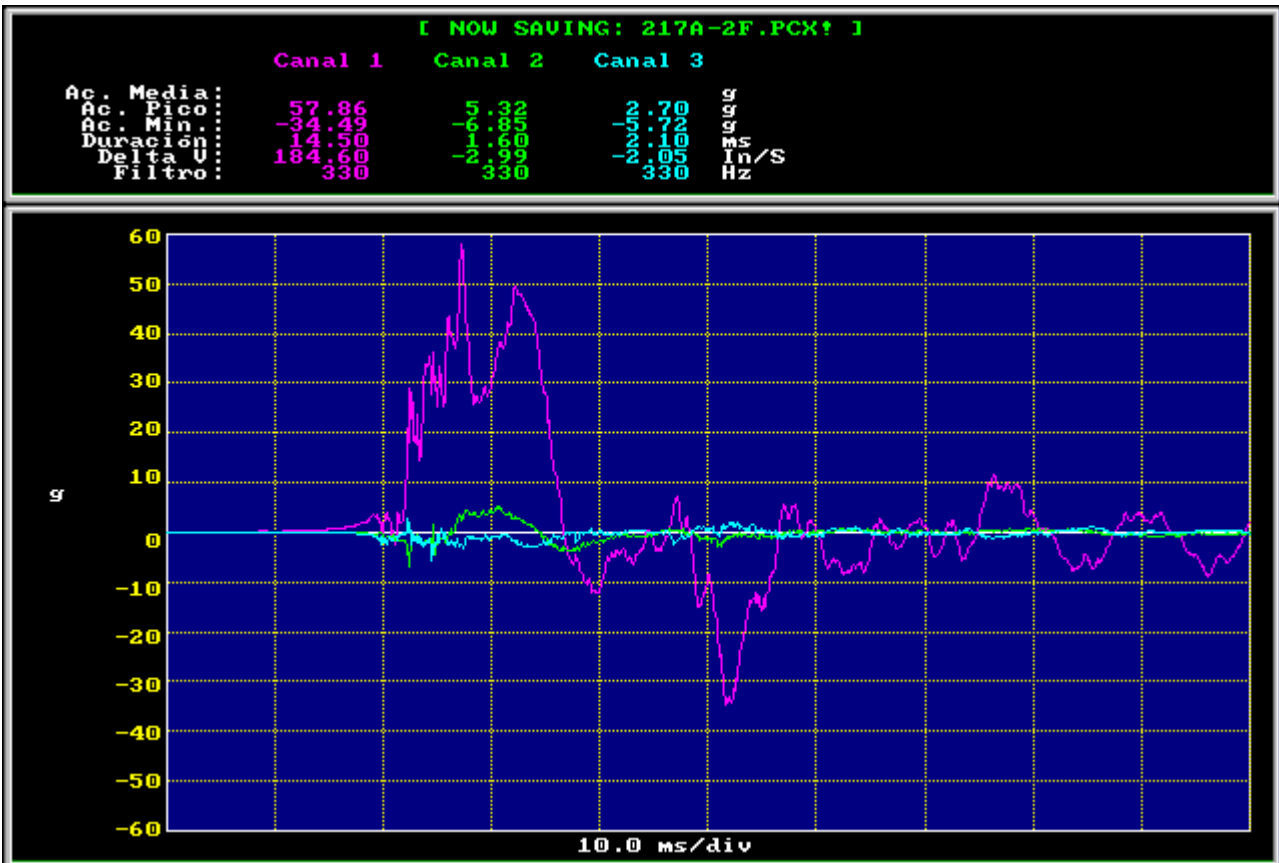
We check the LCD display in the box after PACKING DROP test. All of them have no damage appearance and pass functionality test.

10. Testing Report

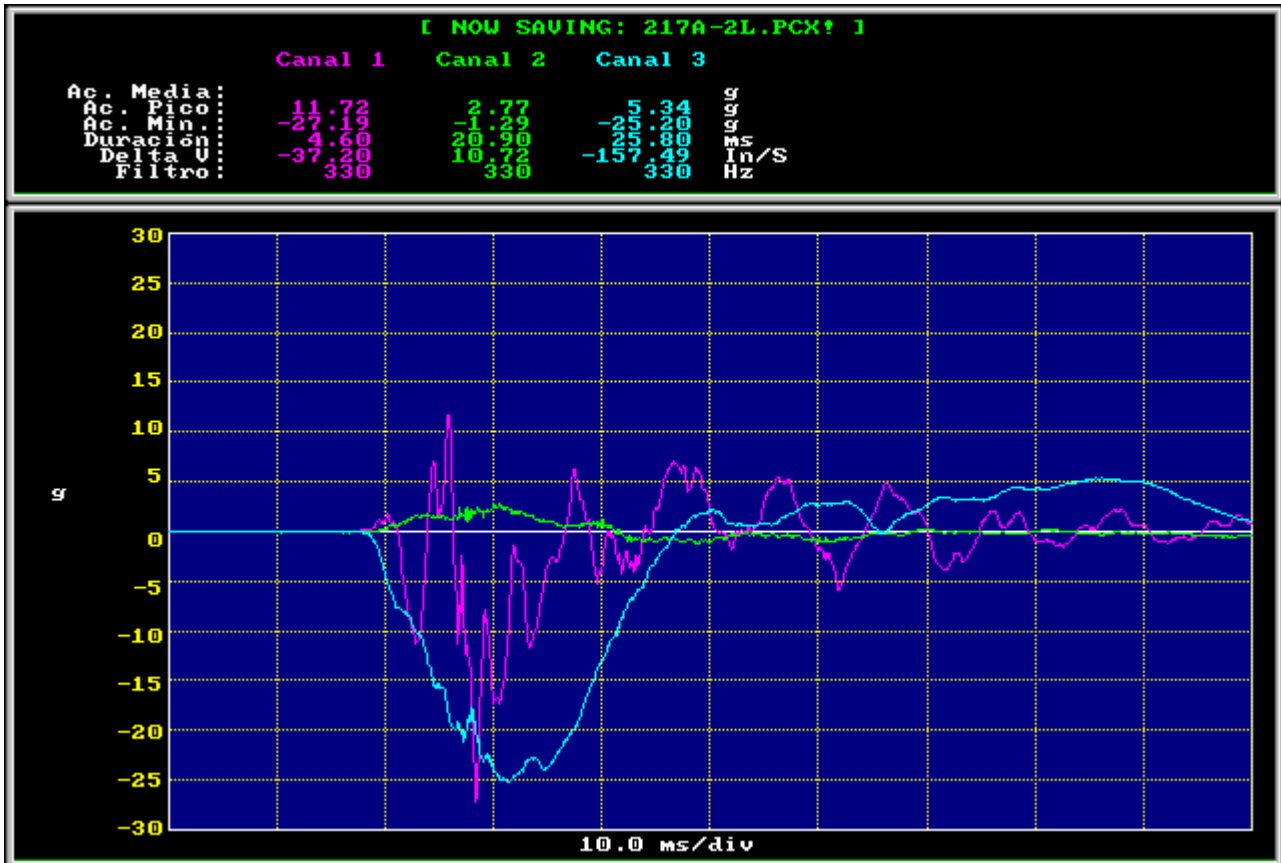
BOTTOM



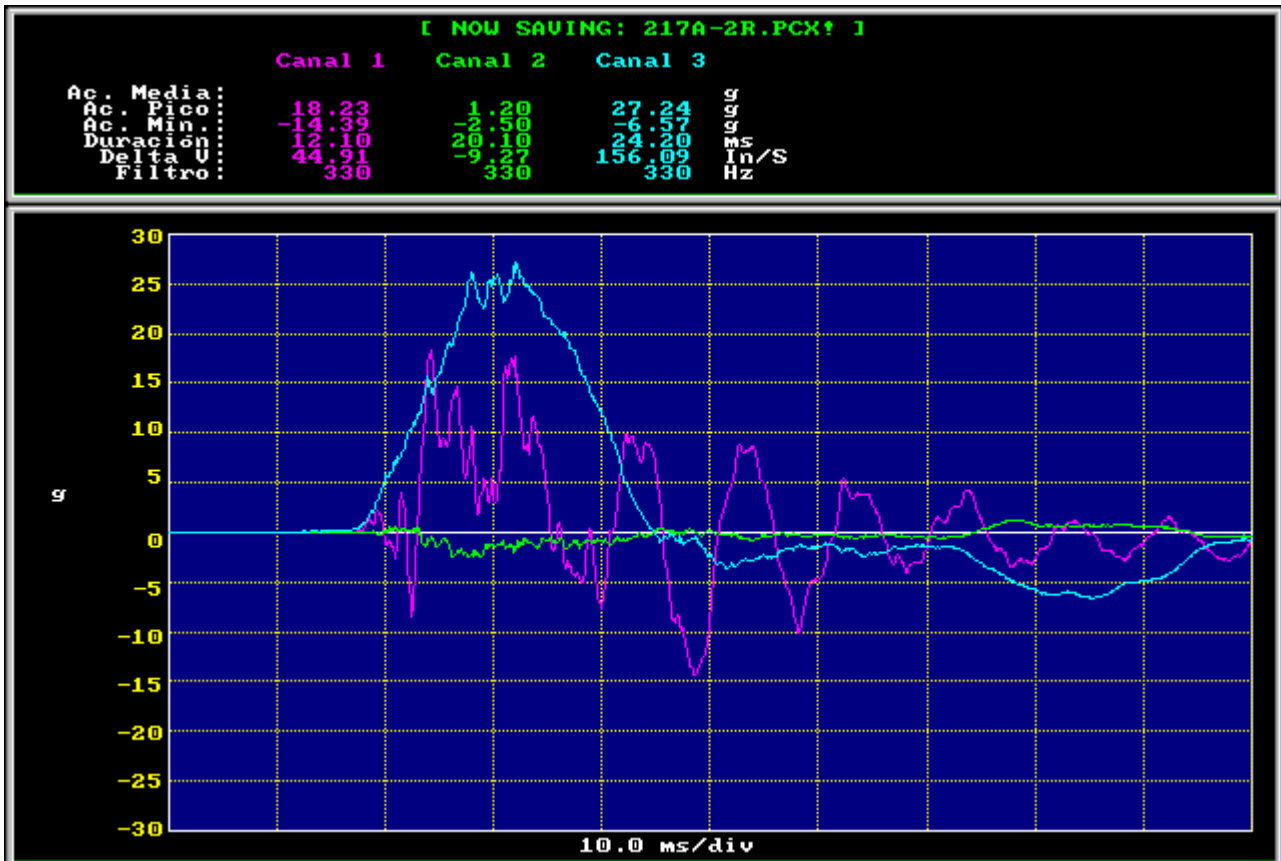
FRONT



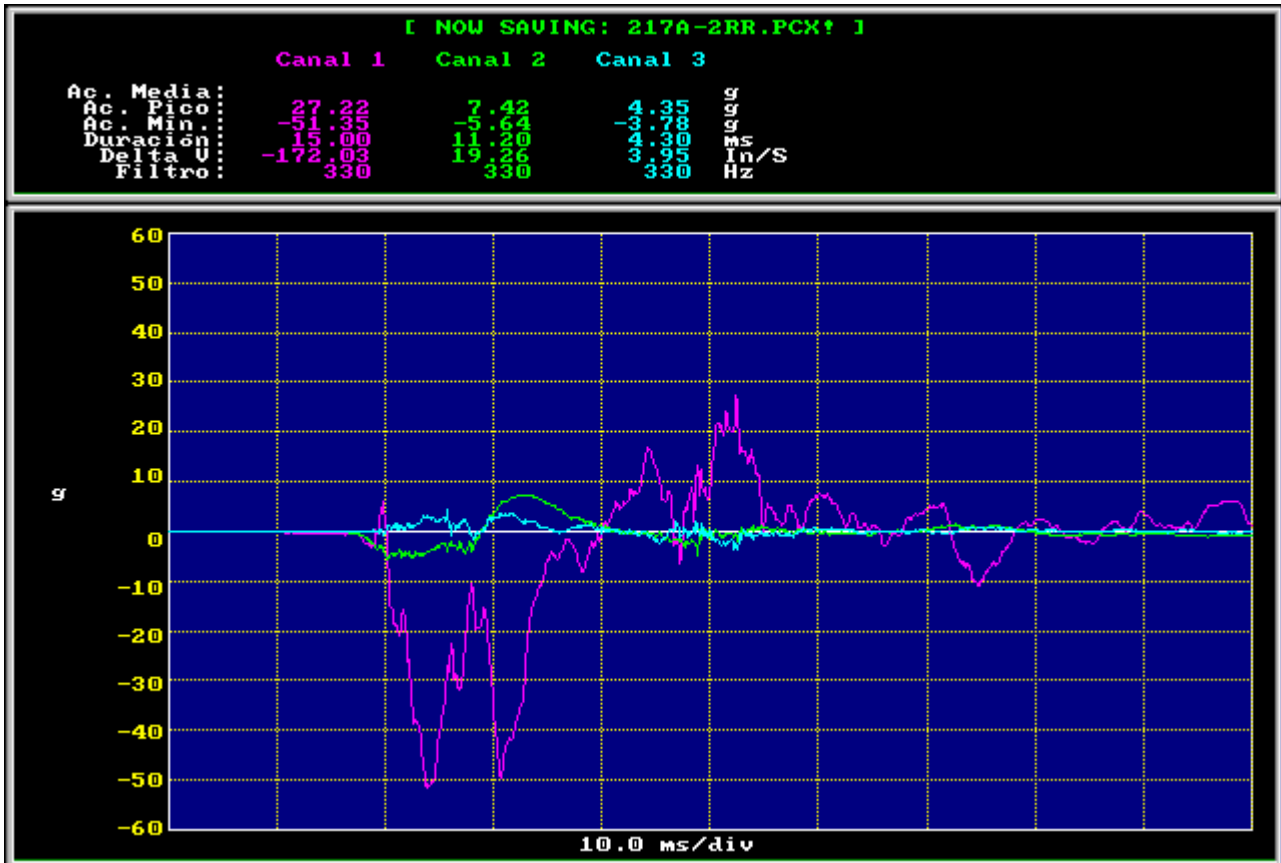
## LEFT



## RIGHT



## BACK



## TOP

