



Sealed Air Taiwan Ltd.

Taiwan Packaging Laboratory

No 20 Lane 238 Tun-Hwa N. Road, Taipei, Taiwan. Tel:(886)02-2713-5321 Fax:(886)02-2713-5334

International Safe Transit Association
Certified Packaging Laboratory



ID Number: ST-2304

Sep 15, 2000

Prepared for: ASTECH TECHNOLOGY CO., LTD.
Product: AMB-2051
Carton Information: Double Wall AB-flute
510x370x235mm Inside Dimensions
Current Packaging: Instapak Gflex
Test Method: International Safe Transit Association (ISTA) Procedure 1A-Pre-shipment test for packaged products weighing under 100 pounds.
Test Equipment: Lansmont Precision Drop Tester
Package Weight: 12kgs
Drop Height: 30"
Drop Description: 10 drops
Manufacturers joint lower corner, three radiating edges, and six faces.

After testing, the outer container still afforded reasonable protection to its contents. There was no apparent physical damage to the unit. Functional testing, however, was not performed.

CONCLUSION: Provided that this unit is found to be in good working order, this package is suitable for common parcel shipment of this product.
It meets or exceeds the drop test portion of the International Safe Transit Association Procedure 1A pre-shipment test specifications.



Please contact with me if you have any question!!

Tony Chang

Mark Hsu
Packaging Lab manager/Packaging Designer
Tony Chang
Packaging Designer



Sealed Air Taiwan Ltd.
Taiwan Packaging Laboratory

No 20 Lane 238 Tun-Hwa N. Road, Taipei, Taiwan. Tel:(886)02-2713-5321 Fax:(886)02-2713-5334

**International Safe Transit Association
Certified Packaging Laboratory**



ID Number: ST-2304

Sep 15, 2000

Prepared for: ASTECH TECHNOLOGY CO., LTD.
Product: AMB-2051
Carton Information: Double Wall AB-flute
510x370x235mm Inside Dimensions
Current Packaging: Instapak Gflex
Test Method: International Safe Transit Association (ISTA) Procedure 1A-Pre-shipment test for packaged products weighing under 100 pounds.
Test Equipment: Lansmont Precision Drop Tester
Package Weight: 12kgs
Drop Height: 30"
Drop Description: 10 drops
Manufacturers joint lower corner, three radiating edges, and six faces.

After testing, the outer container still afforded reasonable protection to its contents. There was no apparent physical damage to the unit. Functional testing, however, was not performed.



CONCLUSION: Provided that this unit is found to be in good working order, this package is suitable for common parcel shipment of this product. It meets or exceeds the drop test portion of the International Safe Transit Association Procedure 1A pre-shipment test specifications.

Please contact with me if you have any question!!

Tony Chang

Mark Hsu
Packaging Lab manager/Packaging Designer
Tony Chang
Packaging Designer



Sealed Air Taiwan Ltd.

Taiwan Packaging Laboratory

No 20 Lane 238 Tun-Hwa N. Road, Taipei, Taiwan. Tel:(886)02-2713-5321 Fax:(886)02-2713-5334

International Safe Transit Association
Certified Packaging Laboratory

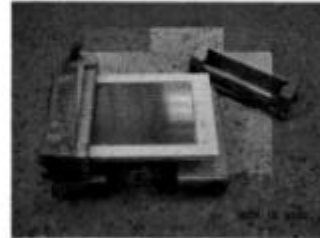


ID Number: ST-2304

Sep 15, 2000

Prepared for: ASTECH TECHNOLOGY CO., LTD.
Product: AMB-2051
Carton Information: Double Wall AB-flute
510x370x235mm Inside Dimensions
Current Packaging: Instapak Gflex
Test Method: International Safe Transit Association (ISTA) Procedure 1A-Pre-shipment test for packaged products weighing under 100 pounds.
Test Equipment: Lansmont Precision Drop Tester
Package Weight: 12kgs
Drop Height: 30"
Drop Description: 10 drops
Manufacturers joint lower corner, three radiating edges, and six faces.

After testing, the outer container still afforded reasonable protection to its contents. There was no apparent physical damage to the unit. Functional testing, however, was not performed.



CONCLUSION: Provided that this unit is found to be in good working order, this package is suitable for common parcel shipment of this product. It meets or exceeds the drop test portion of the International Safe Transit Association Procedure 1A pre-shipment test specifications.

Please contact with me if you have any question!!

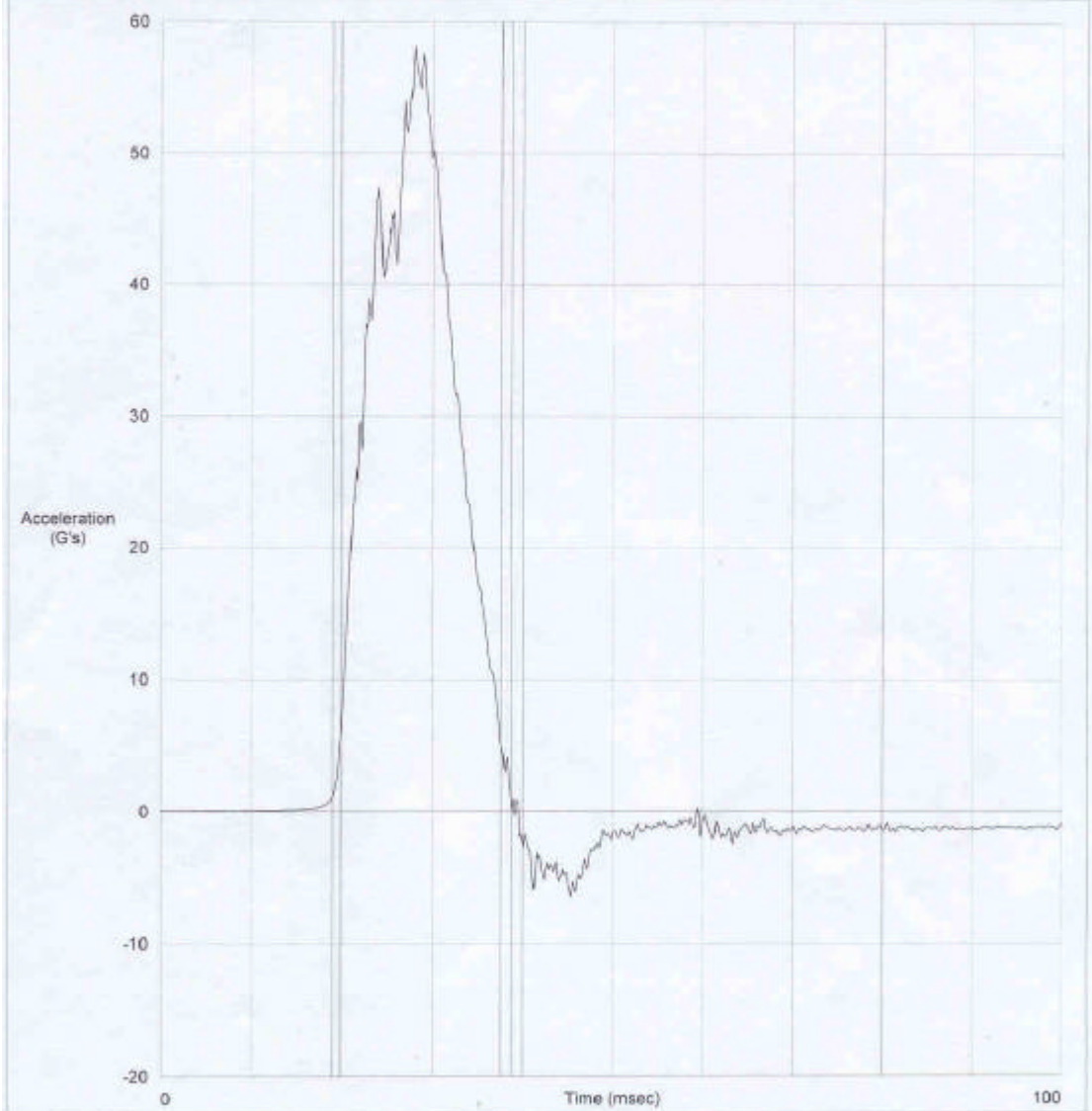
Tony Chang

Mark Hsu
Packaging Lab manager/Packaging Designer
Tony Chang
Packaging Designer



TEST
PARTNER

Channel Description:	G's	msec	In/S	Filter Hz	Max G's	Min G's
Ch 1 Channel 1	58.10	17.80	238.29	330.00	58.10	-6.45



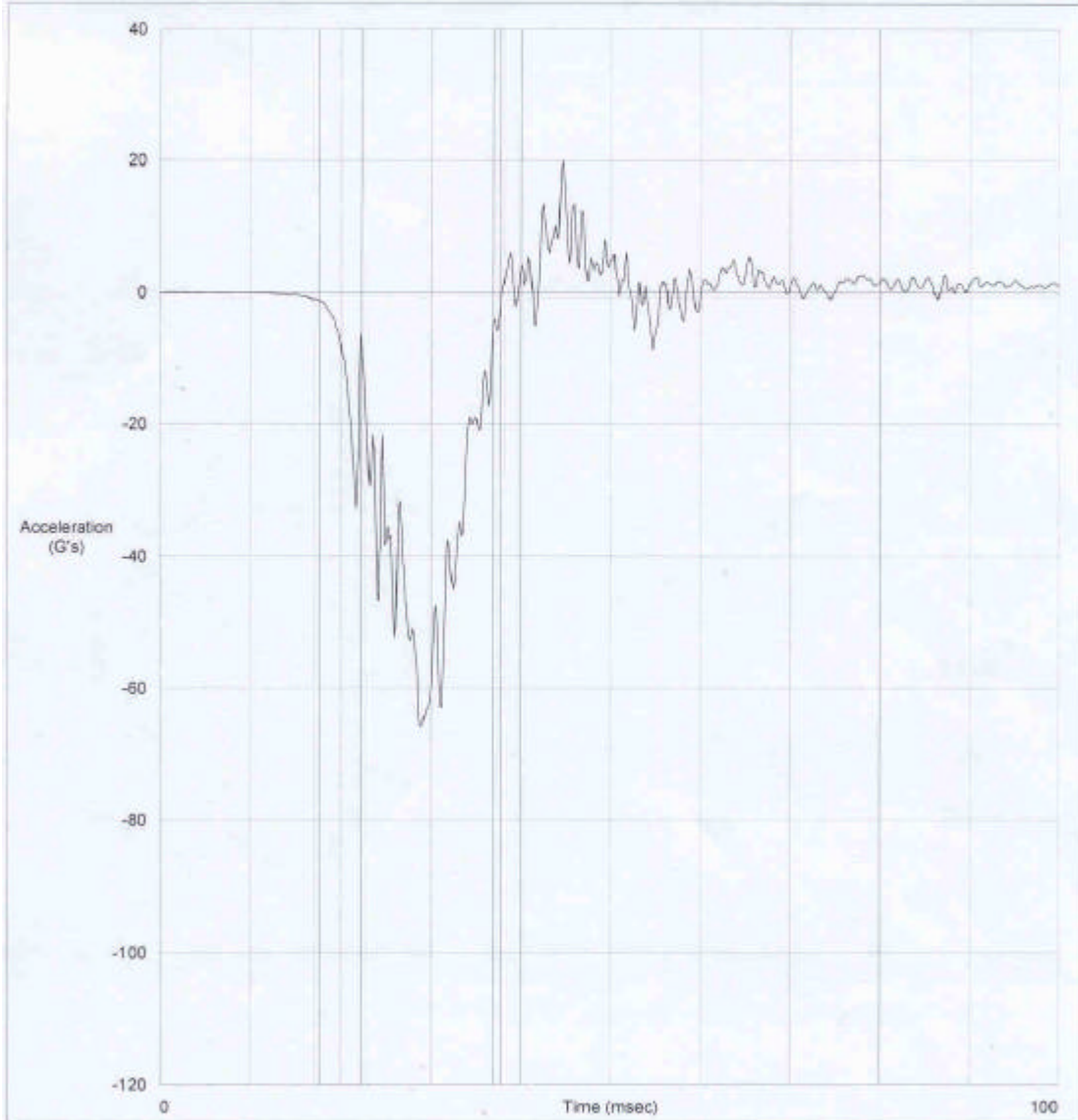
Test ID: AMB-2051
Drop Height: 30 Inch

Remarks:



TEST
PARTNER

Channel Description:	G's	msec	In/S	Filter Hz	Max G's	Min G's
Ch 3 Channel 3	-65.79	14.60	-235.29	330.00	19.87	-65.79



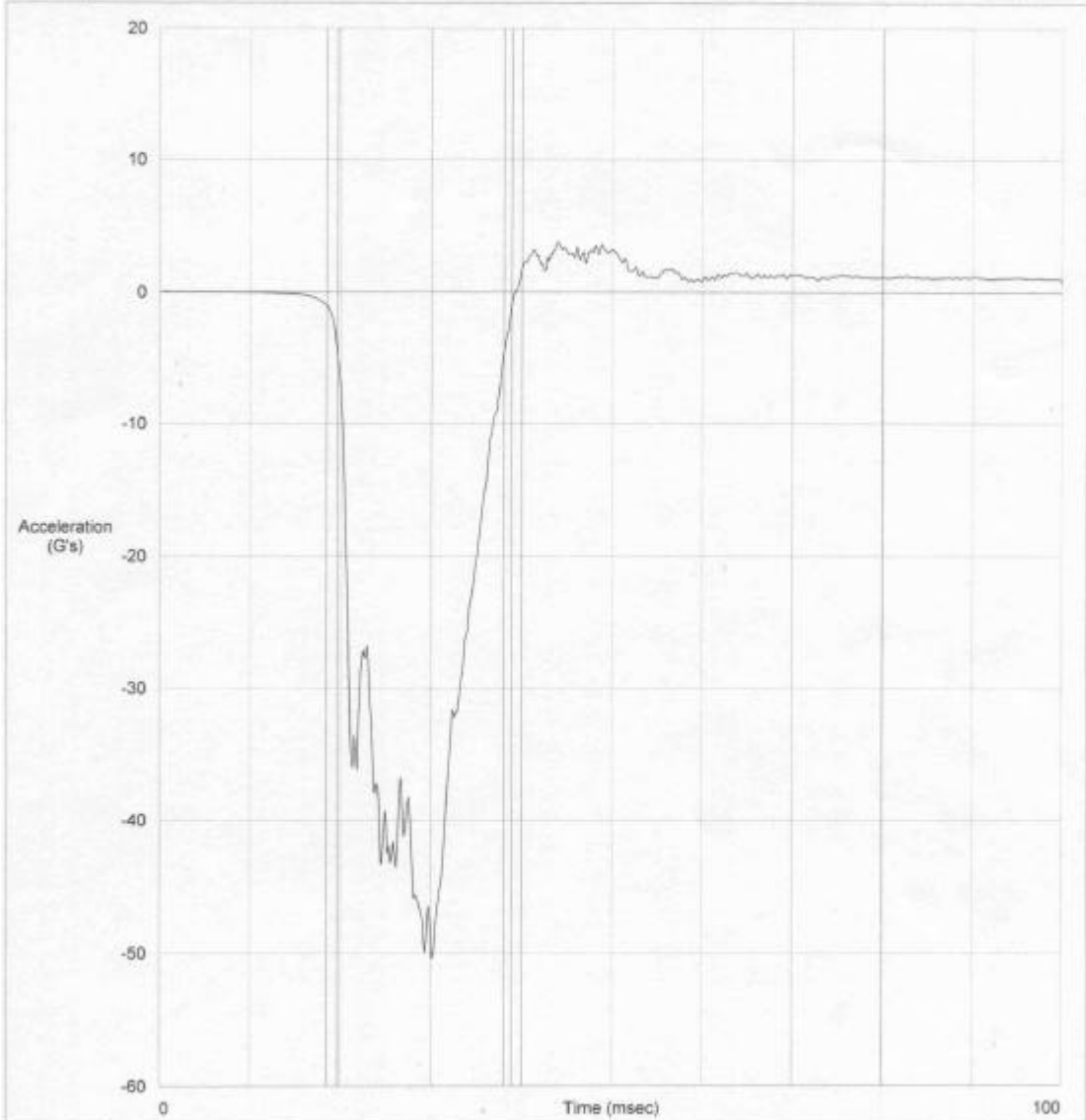
Test ID: AMB-2051
Drop Height: 30 Inch

Remarks:



TEST
PARTNER

Channel Description:	G's	msec	In/S	Filter Hz	Max G's	Min G's
Ch 1 Channel 1	-50.44	16.40	-227.07	330.00	3.80	-50.44

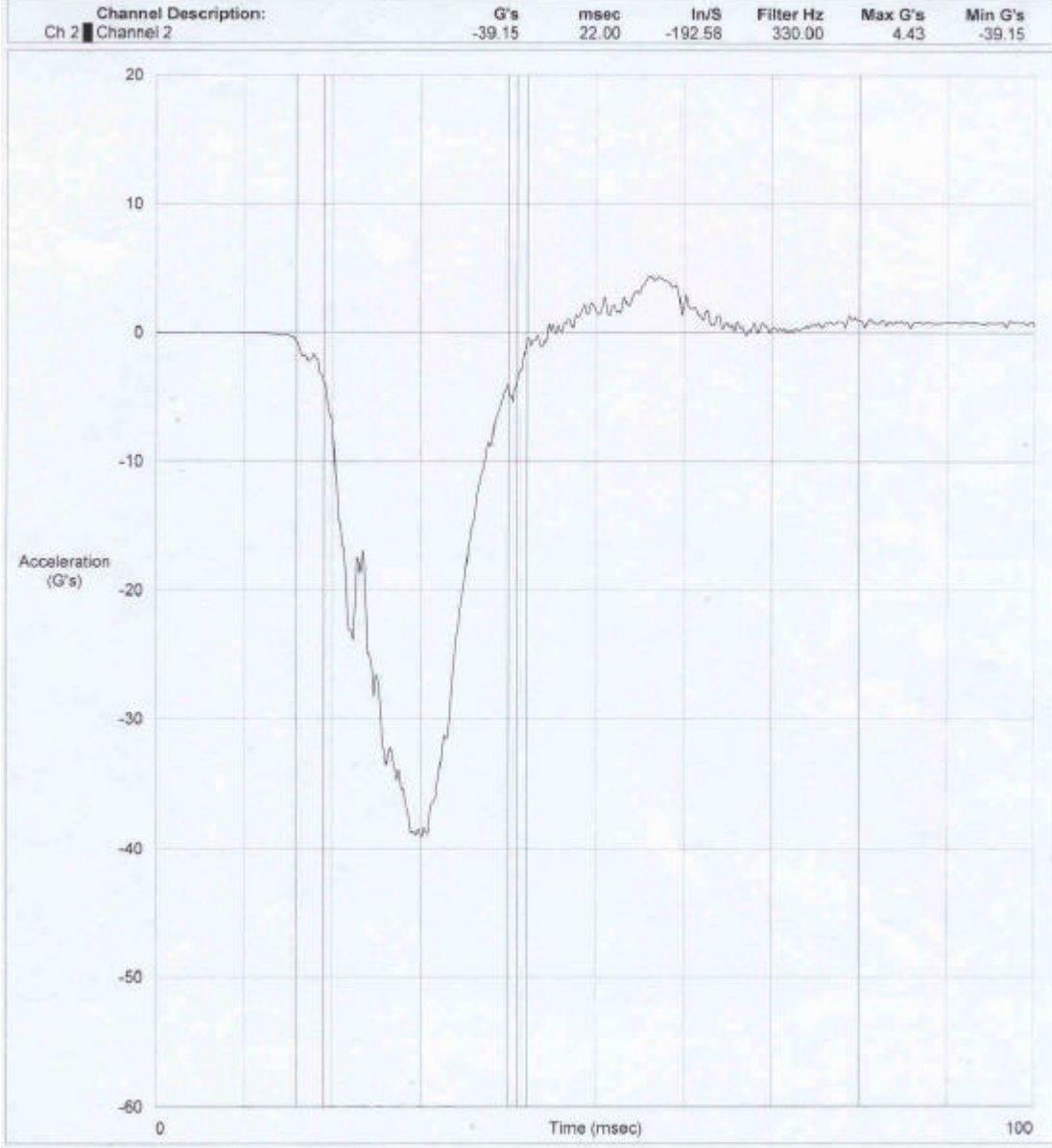


Test ID: AMB-2051
Drop Height: 30 Inch

Remarks:



TEST
PARTNER



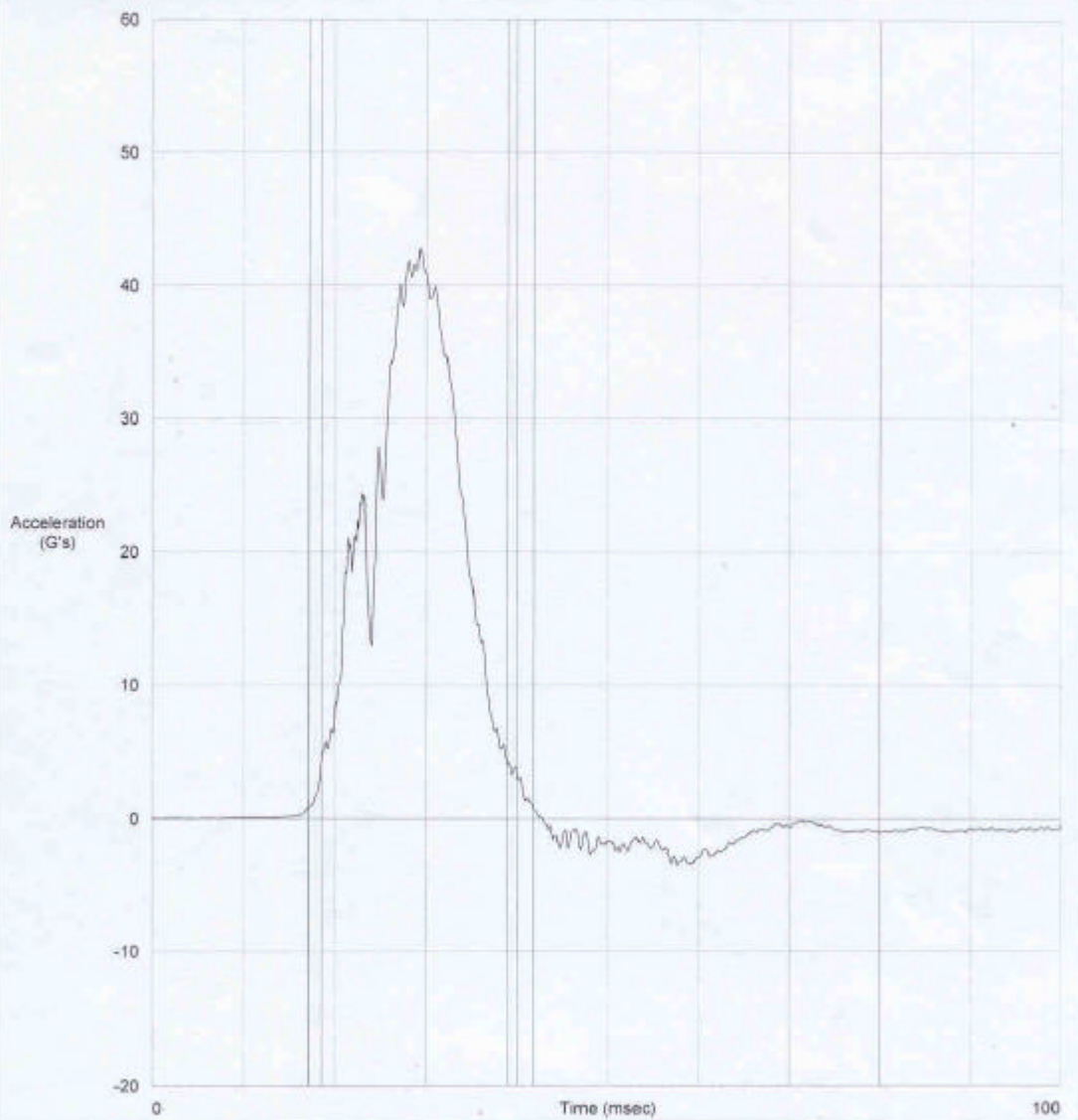
Test ID: AMB-2051
Drop Height: 30 Inch

Remarks:



TEST
PARTNER

Channel Description:	G's	msec	In/S	Filter Hz	Max G's	Min G's
Ch 2 Channel 2	42.75	20.40	190.61	330.00	42.75	-3.51

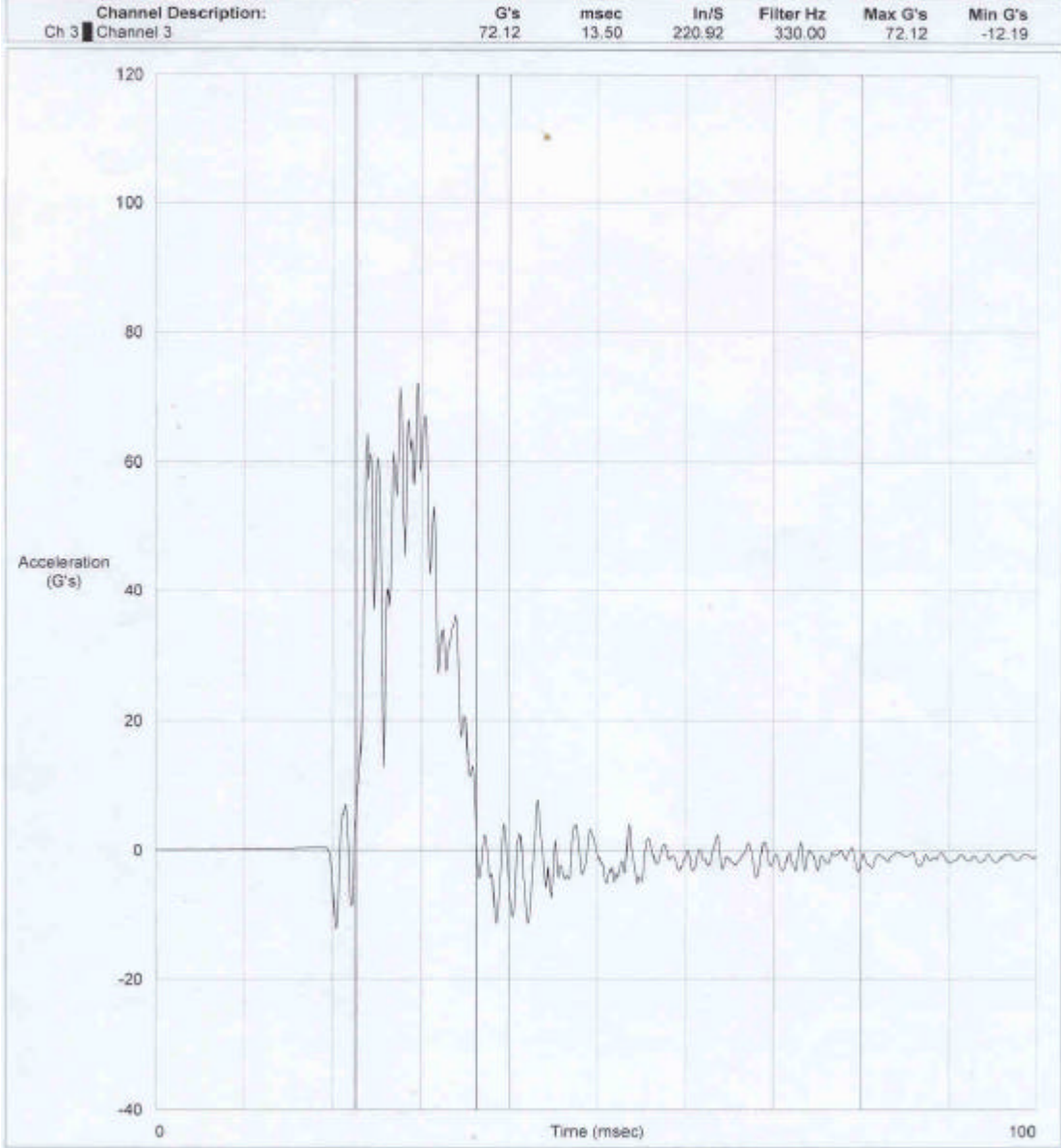


Test ID: AMB-2051
Drop Height: 30 Inch

Remarks:



TEST
PARTNER



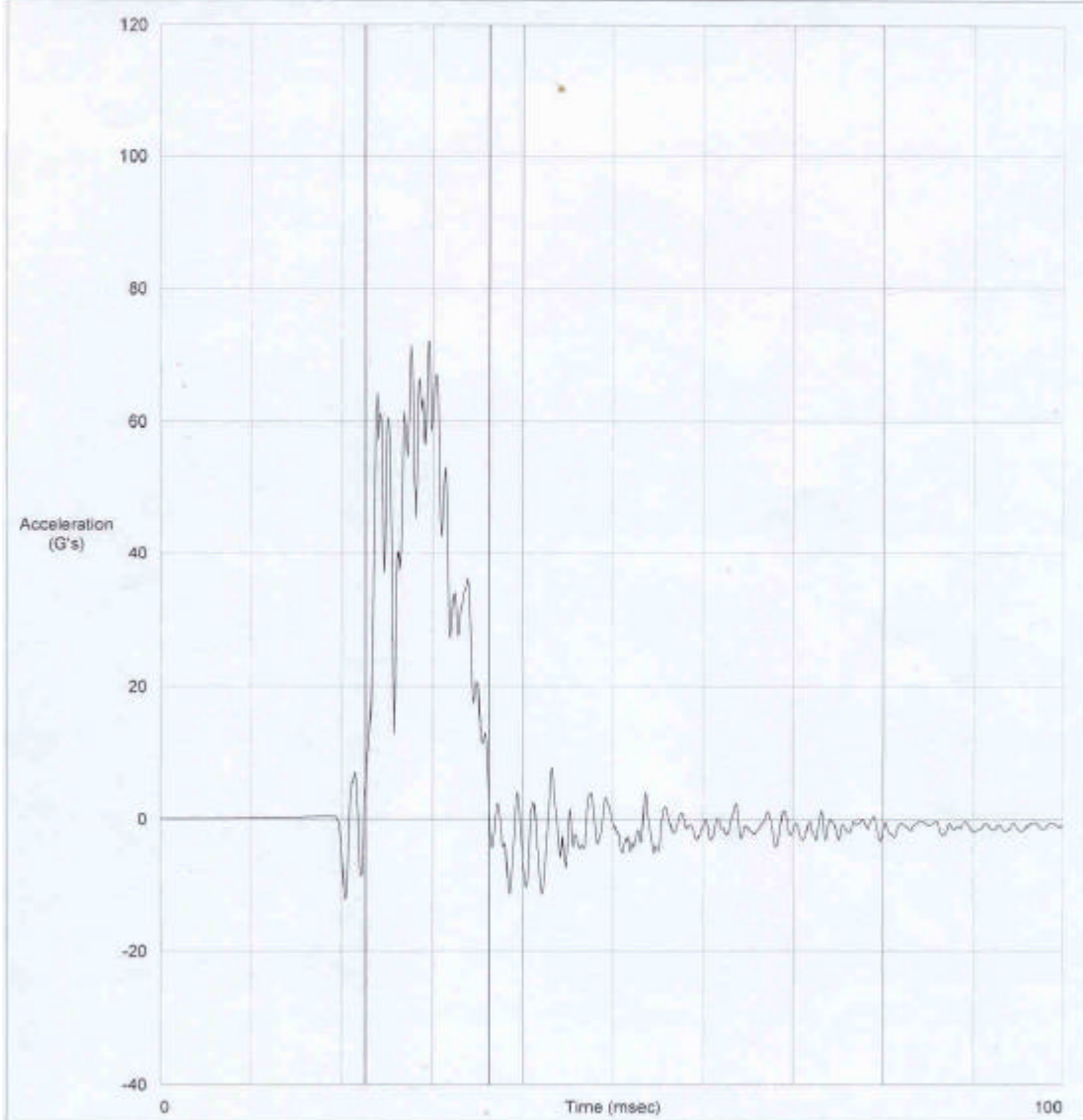
Test ID: AMB-2051
Drop Height: 30 Inch

Remarks:



TEST
PARTNER

Channel Description:	G's	msec	In/S	Filter Hz	Max G's	Min G's
Ch 3 Channel 3	72.12	13.50	220.92	330.00	72.12	-12.19



Test ID: AMB-2051
Drop Height: 30 Inch

Remarks: