

CE TEST REPORT

according to

**European Standard EN 55022:1994/A1:1995/A2:1997 Class A
EN61000-3-2:1995/A12:1996/A13:1997/A1:1998/A2:1998/prA14:2000,
EN 61000-3-3:1995/A1:1998 and EN 55024:1998
(EN61000-4-2:1995, EN61000-4-3:1996, EN61000-4-4:1995,
EN61000-4-5:1995, EN61000-4-6:1996, EN61000-4-8:1993,
EN61000-4-11:1994)**

Equipment : IPC

Model No. : AMB-2457

Applicant : **AAEON TECHNOLOGY INC.**
5F, No. 135, Lane 235, Pao Chiao Rd., Hsin-Tien
City, Taipei, Taiwan, R.O.C.

- The test result refers exclusively to the test presented test model / sample.
- Without the written authorization of the test lab., the Test Report may not be copied.
- This test report is only applicable to European Community.

SPORTON International Inc.

6F, No. 106, Sec. 1, Hsin Tai Wu Rd., Hsi Chih, Taipei Hsien, Taiwan, R.O.C.

Table of Contents

CERTIFICATE OF COMPLIANCE.....	4
1. General Description of Equipment under Test.....	5
1.1 Applicant.....	5
1.2 Manufacturer.....	5
1.3 Basic Description of Equipment under Test.....	5
1.4 Feature of Equipment under Test.....	5
2. Test Configuration of Equipment under Test.....	6
2.1 Test Manner.....	6
2.2 Description of Test System.....	6
3. Test Software.....	10
4. General Information of Test.....	11
4.1 Test Facility.....	11
4.2 Standard for Methods of Measurement.....	11
4.3 Test in Compliance with.....	11
4.4 Frequency Range Investigated.....	11
4.5 Test Distance.....	11
5. Test of Conducted Powerline.....	12
5.1 Description of Major Test Instruments.....	12
5.2 Test Procedures.....	13
5.3 Typical Test Setup Layout of Conducted Powerline.....	14
5.4 Test Result of AC Powerline Conducted Emission.....	15
5.5 Photographs of Conducted Powerline Test Configuration.....	16
6. Test of Radiated Emission.....	17
6.1 Description of Major Test Instruments.....	17
6.2 Test Procedures.....	18
6.3 Typical Test Setup Layout of Radiated Emission.....	19
6.4 Test Result of Radiated Emission.....	20
6.5 Photographs of Radiated Emission Test Configuration.....	21
7. Harmonics Test.....	22
7.1 Standard.....	22
7.2 Test Procedure.....	22
7.3 Test Equipment Settings.....	22
7.4 Test Setup.....	22
7.5 Current Harmonics Test.....	23
8. Voltage Fluctuations Test.....	25
8.1 Standard.....	25
8.2 Test Procedure.....	25
8.3 Test Equipment Settings.....	25
8.4 Test Setup.....	25
8.5 Test Result Of Voltage Fluctuation And Flicker Test.....	26
8.6 Photographs Of Harmonics Test, Voltage Fluctuation And Flicker Test.....	28
9. Electrostatic Discharge Immunity Test (ESD).....	29
9.1 Test setup.....	29
9.2 Test Setup for Tests Performed in Laboratory.....	30
9.3 ESD Test Procedure.....	31
9.4 Test Severity Levels.....	32

9.5 Test Points33

9.6 Photographs of Electrostatic Discharge Immunity Test.....35

10. Radio Frequency Electromagnetic Field Immunity Test (RS).....36

10.1 Test setup36

10.2 Test Procedure.....37

10.3 Test Severity Levels.....37

10.4 Photographs of Radio Frequency Electromagnetic Field Immunity Test.....38

11. Electrical Fast Transient/Burst Immunity Test (EFT/BURST)39

11.1 Test setup39

11.2 Test on Power Line.....40

11.3 Test on Communication Lines40

11.4 Test Procedure.....41

11.5 Test Severity Levels.....42

11.6 Photographs of Electrical Fast Transient/BURST Immunity Test.....43

12. SURGE IMMUNITY TEST45

12.1 TEST RECORD45

12.2 TEST LEVEL46

12.3 TEST PROCEDURE46

12.4 OPERATING CONDITION.....47

12.5 Photographs of SURGE IMMUNITY TEST.....48

13. CONDUCTED DISTURBANCES INDUCED BY RADIO-FREQUENCY FIELD IMMUNITY TEST (CS)...49

13.1 TEST LEVEL49

13.2 OPERATING CONDITION.....49

13.3 TEST PROCEDURE50

14. Power Frequency Magnetic Field immunity tests.....51

15. VOLTAGE DIPS AND VOLTAGE INTERRUPTIONS IMMUNITY TESTS.....52

15.1 TEST RECORD OF VOLTAGE INTERRUPTION.....52

15.2 TEST RECORD OF VOLTAGE DIPS52

15.3 TESTING REQUIREMENT AND PROCEDURE.....53

15.4 TEST CONDITIONS.....53

15.5 OPERATING CONDITION.....53

15.6 Photographs of VOLTAGE DIPS AND VOLTAGE INTERRUPTIONS IMMUNITY TESTS54

16. Antenna Factor & Cable Loss55

17. List of Measuring Equipment Used56

18. Notice for Class A Product.....58

19. Declaration of Conformity and the CE Mark59

Appendix A. Photographs of EUT A1 ~ A40

CERTIFICATE OF COMPLIANCE

according to

**European Standard EN 55022:1994/A1:1995/A2:1997 Class A
EN61000-3-2:1995/A12:1996/A13:1997/A1:1998/A2:1998/prA14:2000,
EN 61000-3-3:1995/A1:1998 and EN 55024:1998
(EN61000-4-2:1995, EN61000-4-3:1996, EN61000-4-4:1995,
EN61000-4-5:1995, EN61000-4-6:1996, EN61000-4-8:1993,
EN61000-4-11:1994)**

Equipment : IPC

Model No. : AMB-2457

Applicant : **AAEON TECHNOLOGY INC.**
5F, No. 135, Lane 235, Pao Chiao Rd., Hsin-Tien
City, Taipei, Taiwan, R.O.C.

I HEREBY CERTIFY THAT :

The measurements shown in this test report were made in accordance with the procedures given in **EUROPEAN COUNCIL DIRECTIVE 89/336/EEC**. The equipment was *passed* the test performed according to **European Standard EN 55022:1994/A1:1995/A2:1997 Class A , EN61000-3-2:1995/A12:1996/A13:1997/A1:1998/A2:1998/prA14:2000, EN61000-3-3:1995/A1:1998 and EN 55024:1998 (EN61000-4-2:1995, EN61000-4-3:1996, EN61000-4-4:1995, EN61000-4-5:1995, EN61000-4-6:1996, EN61000-4-8:1993, EN61000-4-11:1994)**. The test was carried out on Apr. 10, 2001 at **SPORTON International Inc. LAB.**



K. J. Lin
Manager

SPORTON International Inc.

6F, No. 106, Sec. 1, Hsin Tai Wu Rd., Hsi Chih, Taipei Hsien, Taiwan, R.O.C.

1. General Description of Equipment under Test

1.1 Applicant

AAEON TECHNOLOGY INC.
5F, No. 135, Lane 235, Pao Chiao Rd., Hsin-Tien
City, Taipei, Taiwan, R.O.C.

1.2 Manufacturer

Same as 1.1.

1.3 Basic Description of Equipment under Test

Equipment : IPC
Model No. : AMB-2457
Trade Name : AAEON
STP DATA CABLE : Double-Shielded, 10m
Panel DATA CABLE : Double-Shielded, 0.2m
Power Supply Type : Switching
AC Power Cord : Non-Shielded, 1.75m, 3 pin

1.4 Feature of Equipment under Test

CPU : INTEL CELERON 366MHz
15" XGA color TFT LCD display
Aluminum alloy front panel heavy-duty steel chassis
Memory : 32MB SDRAM (Up to 768MB)
LCD/CRT controller : C&T 89000 VGA controller 2MB SDRAM embedded. CRT& LCD panel support
Network (LAN) : Realtek RTL8139B 10/100 Base-T Ethernet controller (optional)
1 x RS-232
1 parallel port (supports ECP/EPP)
1 PS/2 keyboard interface
Expansion Slots: 7 ISA/PCI slots.
CDROM : VINTECH/VISS24A/24x
HDD : Quantium/Fireball™ Ict
Power : MAGIC/MPI-925A

2. Test Configuration of Equipment under Test

2.1 Test Manner

- a. During testing, the interface cables and equipment positions were varied according to european Standard EN 55022.
- b. The remote workstation, SONY Monitor, DELL PS/2 Keyboard, HP Printer and ACEEX Modem were connected to the EUT for EMI test. The remote workstation included SONY Monitor, DELL PS/2 Keyboard and FIC PC.
- c. The remote workstation, HP Monitor, DELL PS/2 Keyboard, HP Printer and ACEEX Modem were connected to the EUT for EMS test. The remote workstation included SYNCO Monitor, DELL PS/2 Keyboard, PRIMAX PS/2 Mouse and DELL PC
- d. Frequency range investigated: conduction 150 KHz to 30 MHz, radiation 30 MHz to 1000MHz.

2.2 Description of Test System

< EMI >

Support Unit 1. -- Monitor (SONY) – for remote and local workstation

FCC ID	: AK8GDM17SE2T
Model No.	: GDM-17SE2T
Power Supply Type	: Switching
Power Cord	: Non-Shielded
Serial No.	: SP0013
Data Cable	: Shielded, 1.15m

Support Unit 2. -- PS/2 Keyboard (DELL) – for remote and local workstation

FCC ID	: GYUM90SK
Model No.	: AT101W
Serial No.	: SP0019
Data Cable	: Shielded, 1.5m

Support Unit 3. -- Printer (HP) – for local workstation

FCC ID	: DSI6XU2225
Model No.	: 2225C
Power Supply Type	: Linear
Power Cord	: Non-Shielded
Serial No.	: SP0014
Data Cable	: Shielded, 360 degree via metal backshells, 1.2m

Support Unit 4. -- Modem (ACEEX) – for local workstation

FCC ID : IFAXDM1414
Model No. : DM1414
Power Supply Type : Linear
Power Cord : Non-Shielded
Serial No. : SP0015
Data Cable : Shielded, 360 degree via metal backshells, 1.15m

Support Unit 5. -- Personal Computer (FIC) – for remote workstation

FCC ID : N/A
Model No. : P2L97
Power Supply Type : Switching
Power Cord : Non-Shielded
Serial No. : SP0037
Data Cable : Shielded
Remark : This support device was tested to comply with FCC standards and authorized under a declaration of conformity.

< EMS >

Support Unit 1. -- Monitor (HP) – for local workstation

FCC ID : ACJ93312116
Model No. : D2807A
Power Supply Type : Switching
Power Cord : Non-Shielded
Serial No. : SP0053
Data Cable : Shielded, 1.7m

Support Unit 2. -- PS/2 Keyboard (DELL) – for remote and local workstation

FCC ID : GYUM92SK
Model No. : AT101(DE8M)
Serial No. : SP0054
Data Cable : Shielded, 1.9m

Support Unit 3. -- Printer (HP) – for local workstation

FCC ID : DSI6XU2225
Model No. : 2225C
Power Supply Type : Linear
Power Cord : Non-Shielded
Serial No. : SP0014
Data Cable : Shielded, 1.35m

Support Unit 4. -- Modem (ACEEX) – for local workstation

FCC ID : IFAXDM1414
Model No. : DM1414
Power Supply Type : Linear
Power Cord : Non-Shielded
Serial No. : SP0015
Data Cable : Shielded, 1.15m

Support Unit 5. -- Personal Computer (DELL) – for remote workstation

FCC ID : N/A
Model No. : DCS
Power Supply Type : Switching
Power Cord : Non-Shielded
Serial No. : SP0038
Data Cable : Shielded
Remark : This support device was tested to comply with FCC standards and authorized under a declaration of conformity.

Support Unit 6. -- Monitor (SYNCO) – for remote workstation

FCC ID : N/A
Model No. : GM-568
Power Supply Type : Switching
Power Cord : Non-Shielded
Serial No. : SP0022
Data Cable : Shielded, 1.7m
Remark : This support device was tested to comply with FCC standards and authorized under a declaration of conformity.

3. Test Software

< EMI >

An executive program, EMITEST.EXE under WIN 98, which generate a complete line of continuously repeating " H " pattern were used as the test software.

The programs were executed as follows :

- a. Turn on the power of all equipment.
- b. The PC reads the test program from the floppy disk drive and runs it.
- c. The PC sends " H " messages to the monitor, and the monitor displays " H " patterns on the screen.
- d. The PC sends " H " messages to the printer, then the printer prints them on the paper.
- e. The PC sends " H " messages to the modem.
- f. The PC sends " H " messages to the internal Hard Disk, and the Hard Disk reads and writes the message.
- g. Repeat the steps from b to f.

At the same time, the following programs were executed:

- Executed "CD player" to play music.
- Executed "LAN TEST.BAT" was executed to link with the remote workstation to receive and transmit data by TP cable.

< EMS >

Two executive programs, EMITEST.EXE & WINFCC.EXE under WIN 98, which generate a complete line of continuously repeating " H " pattern were used as the test software.

The programs were executed as follows :

- a. Turn on the power of all equipment.
- b. The PC reads the test program from the floppy disk drive and runs it.
- c. The PC sends " H " messages to the monitor, and the monitor displays " H " patterns on the screen.
- d. The PC sends " H " messages to the printer, then the printer prints them on the paper.
- e. The PC sends " H " messages to the modem.
- f. The PC sends " H " messages to the internal Hard Disk, and the Hard Disk reads and writes the message.
- g. Repeat the steps from b to f.

At the same time, "Network Neighborhood" was executed to link with the remote workstation to receive and transmit data by TP cable.

4. General Information of Test

4.1 Test Facility

< EMI >

This test was carried out by SPORTON International Inc.

Test Site Location : No. 3, Lane 238, Kang Lo Street, Nei Hwu District,
Taipei 11424, Taiwan, R.O.C.
TEL : 886-2-2631-4739
FAX : 886-2-2631-9740

< EMS >

This test was carried out by SPORTON International Inc.

Test Site Location : No. 30-2, Lin 6, Diing-Fwu Tsuen, Lin-Kou-Hsiang,
Taipei Hsien, Taiwan, R.O.C.
TEL : 886-2-2601-1640
FAX : 886-2-2601-1695

4.2 Standard for Methods of Measurement

EMI Test (conduction and radiation) : European Standard EN 55022 Class A
Harmonics Test : European Standard EN 61000-3-2.
Voltage Fluctuations Test : European Standard EN 61000-3-3.
EMS Test : European Standard EN 55 024:1998.
(ESD: EN 61 000-4-2, RS: EN 61 000-4-3, EFT: EN 61 000-4-4, SURGE: EN 61 000-4-5,
CS: EN 61 000-4-6, Power Frequency Magnetic Field: EN 61 000-4-8, DIPS: EN 61 000-4-11)

4.3 Test in Compliance with

EMI Test (conduction and radiation) : European Standard EN 55022 Class A
Harmonics Test : European Standard EN 61000-3-2.
Voltage Fluctuations Test : European Standard EN 61000-3-3.
EMS Test : European Standard EN 55 024:1998.
(ESD: EN 61 000-4-2, RS: EN 61 000-4-3, EFT: EN 61 000-4-4, SURGE: EN 61 000-4-5,
CS: EN 61 000-4-6, Power Frequency Magnetic Field: EN 61 000-4-8, DIPS: EN 61 000-4-11)

4.4 Frequency Range Investigated

- Conducted emission test: from 150 kHz to 30 MHz
- Radiated emission test: from 30 MHz to 1,000 MHz
- Radio frequency electromagnetic field immunity test : 80-1000 MHz.

4.5 Test Distance

The test distance of radiated emission test from antenna to EUT is 10 M.

The test distance of radio frequency electromagnetic field immunity test from antenna to EUT is 3 M.

5. Test of Conducted Powerline

Conducted Emissions were measured from 150 kHz to 30 MHz with a bandwidth of 9 kHz on the 230V AC power and return leads of the EUT according to the methods defined in European Standard EN 55022 Clause 9. The EUT was placed on a nonmetallic stand in a shielded room 0.8 meters above the ground plane as shown in section 5.3. The interface cables and equipment positioning were varied within limits of reasonable applications to determine the position producing maximum conducted emissions.

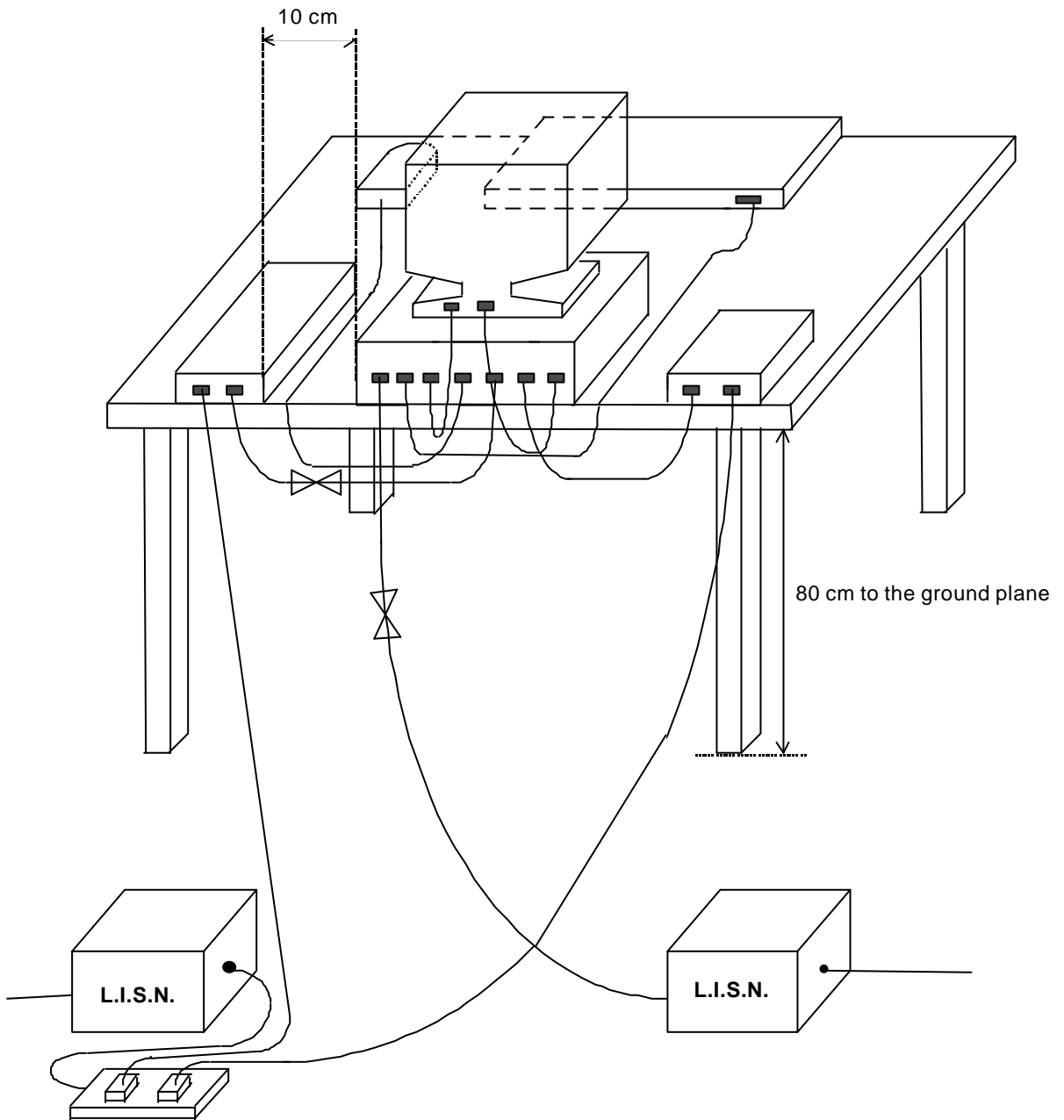
5.1 Description of Major Test Instruments

- Test Receiver (R&S ESH3)
 - Attenuation 0 dB
 - Start Frequency 0.15 MHz
 - Stop Frequency 30 MHz
 - Step MHz 0.007 MHz
 - IF Bandwidth 9 KHz

5.2 Test Procedures

- a. The EUT was placed on a desk 0.8 meters height from the metal ground plane and 0.4 meter from the conducting wall of the shielding room and it was kept at least 0.8 meters from any other grounded conducting surface.
- b. Connect EUT to the power mains through a line impedance stabilization network (LISN).
- c. All the support units are connect to the other LISN.
- d. The LISN provides 50 ohm coupling impedance for the measuring instrument.
- e. The CISPR states that a 50 ohm , 50 microhenry LISN should be used.
- f. Both sides of AC line were checked for maximum conducted interference.
- g. The frequency range from 150 kHz to 30 MHz was searched.
- h. Set the test-receiver system to Peak Detect Function and Specified Bandwidth with Maximum Hold Mode.
- i. If the emission level of the EUT in peak mode was 6 dB lower than the limit specified, then testing will be stopped and peak values of EUT will be reported, otherwise, the emissions which do not have 6 dB margin will be retested one by one using the quasi-peak method and/or average methods and reported.

5.3 Typical Test Setup Layout of Conducted Powerline



5.4 Test Result of AC Powerline Conducted Emission

5.4.1 Test mode : 1024x768 48K/60Hz LAN : 100Mbps CRT+PANEL

Frequency Range of Test : from 150 kHz to 30 MHz

Temperature : 23°C

Relative Humidity : 52 %

Test Date : Apr. 10, 2001

The Conducted Emission test was passed at minimum margin LINE 24.277 MHz / 41.20 dBuV.

Freq. (MHz)	Line or Neutral	Meter Reading				Limits				Margin	
		Q.P. (dBuV)	A.V. (dBuV)	Q.P. (uV)	A.V. (uV)	Q.P. (dBuV)	A.V. (dBuV)	Q.P. (uV)	A.V. (uV)	Q.P. (dB)	A.V. (dB)
0.158	L	45.10	41.90	179.89	124.45	79.00	66.00	8912.51	1995.26	-33.9	-24.1
0.238	L	45.90	42.00	197.24	125.89	79.00	66.00	8912.51	1995.26	-33.1	-24.0
24.277	L	43.90	41.20	156.68	114.82	73.00	60.00	4466.84	1000.00	-29.1	-18.8
0.158	N	44.50	41.30	167.88	116.14	79.00	66.00	8912.51	1995.26	-34.5	-24.7
0.238	N	46.40	42.90	208.93	139.64	79.00	66.00	8912.51	1995.26	-32.6	-23.1
24.270	N	43.40	40.80	147.91	109.65	73.00	60.00	4466.84	1000.00	-29.6	-19.2

Test Engineer : Benson
 BENSON TSAI

5.5 Photographs of Conducted Powerline Test Configuration

- The photographs show the configuration that generates the maximum emission.

FRONT VIEW



REAR VIEW



6. Test of Radiated Emission

Radiated emissions from 30 MHz to 1000 MHz were measured with a bandwidth of 120 kHz according to the methods defines in European Standard EN 55022, Clause 10. The EUT was placed on a nonmetallic stand in the open-field site, 0.8 meter above the ground plane, as shown in section 6.3. The interface cables and equipment positions were varied within limits of reasonable applications to determine the positions producing maximum radiated emissions.

6.1 Description of Major Test Instruments

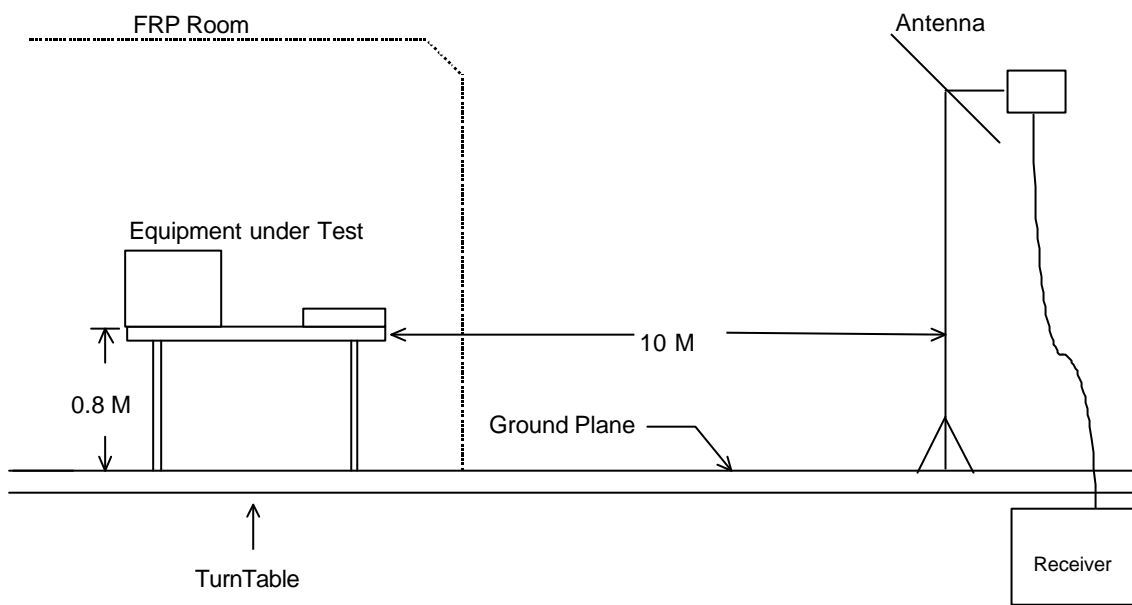
- Amplifier (HP 8447D)
 - Attenuation 0 dB
 - RF Gain 25 dB
 - Signal Input 0.1 MHz to 1.3 GHz

- Spectrum Analyzer (ADVANTEST R3261C)
 - Attenuation 0 dB
 - Start Frequency 30 MHz
 - Stop Frequency 1000 MHz
 - Resolution Bandwidth 1 MHz
 - Video Bandwidth 1 MHz
 - Signal Input 9 KHz to 2.6 GHz

6.2 Test Procedures

- a. The EUT was placed on a rotatable table top 0.8 meter above ground.
- b. The EUT was set 10 meters from the interference-receiving antenna which was mounted on the top of a variable height antenna tower.
- c. The table was rotated 360 degrees to determine the position of the highest radiation.
- d. The antenna is a half wave dipole and its height is varied between one meter and four meters above ground to find the maximum value of the field strength both horizontal polarization and vertical polarization of the antenna are set to make the measurement.
- e. For each suspected emission the EUT was arranged to its worst case and then tune the antenna tower (from 1 M to 4 M) and turn table (from 0 degree to 360 degrees) to find the maximum reading.
- f. Set the test-receiver system to Peak Detect Function and specified bandwidth with Maximum Hold Mode.
- g. If the emission level of the EUT in peak mode was 6 dB lower than the limit specified, then testing will be stopped and peak values of EUT will be reported, otherwise, the emissions which do not have 6 dB margin will be repeated one by one using the quasi-peak method and reported.

6.3 Typical Test Setup Layout of Radiated Emission



6.4 Test Result of Radiated Emission

6.4.1 Test mode : 1024x768 48K/60Hz LAN : 100Mbps CRT+PANEL

Frequency Range of Test : from 30 MHz to 1000 MHz

Test Distance : 10 M

Temperature : 25°C

Relative Humidity : 60 %

Test Date : Apr. 10, 2001


Emission level (dBuV/m) = 20 log Emission level (uV/m)

Corrected Reading : Antenna Factor + Cable Loss + Reading = Emission

The Radiated Emission test was passed at minimum margin:

VERTICAL 37.200 MHz / 39.12 dBuV Antenna Height 1 Meter , Turntable Degree 0 °.

Frequency (MHz)	Polarity	Antenna Factor (dB/m)	Cable Loss (dB)	Reading (dBuV)	Limits		Emission (dBuV/m)	Level (uV/m)	Margin (dB)
					(dBuV/m)	(uV/m)			
37.200	V	16.53	1.03	21.56	40.00	100.00	39.12	90.36	-0.88
66.800	V	6.23	1.39	31.37	40.00	100.00	38.99	89.02	-1.01
157.500	V	10.06	2.16	24.26	40.00	100.00	36.48	66.68	-3.52
162.300	V	9.79	2.22	24.97	40.00	100.00	36.98	70.63	-3.02
205.600	V	9.43	2.71	24.04	40.00	100.00	36.18	64.42	-3.82
51.300	H	10.87	1.19	24.11	40.00	100.00	36.17	64.34	-3.83

Test Engineer : 
 BENSON TSAI

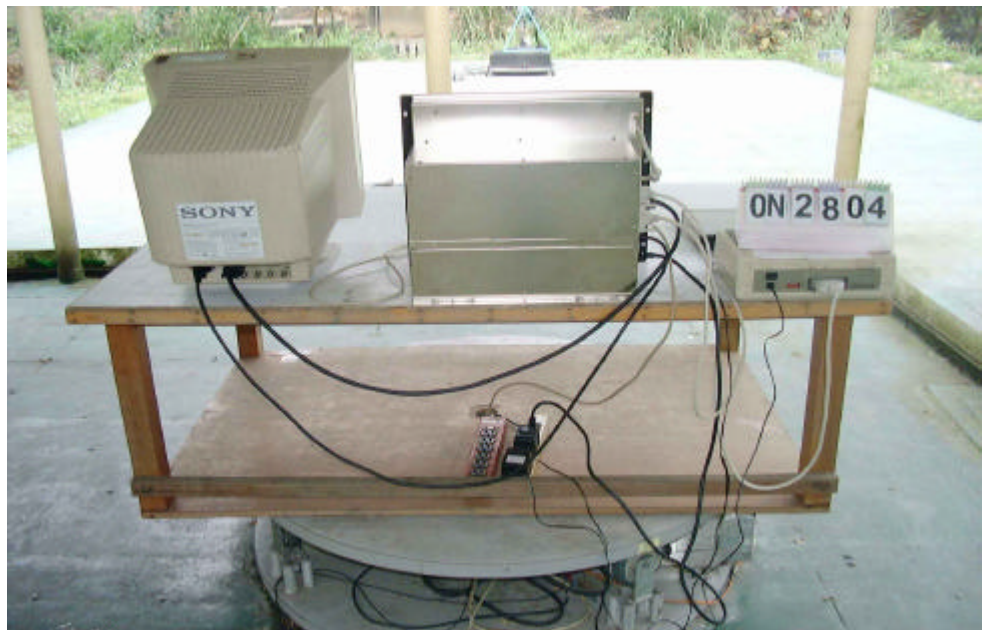
6.5 Photographs of Radiated Emission Test Configuration

- The photographs show the configuration that generates the maximum emission.

FRONT VIEW



REAR VIEW



7. Harmonics Test

7.1 Standard

- Standard : EN 61000-3-2:1995/A12:1996/A13:1997/A1:1998/A2:1998/prA14:2000

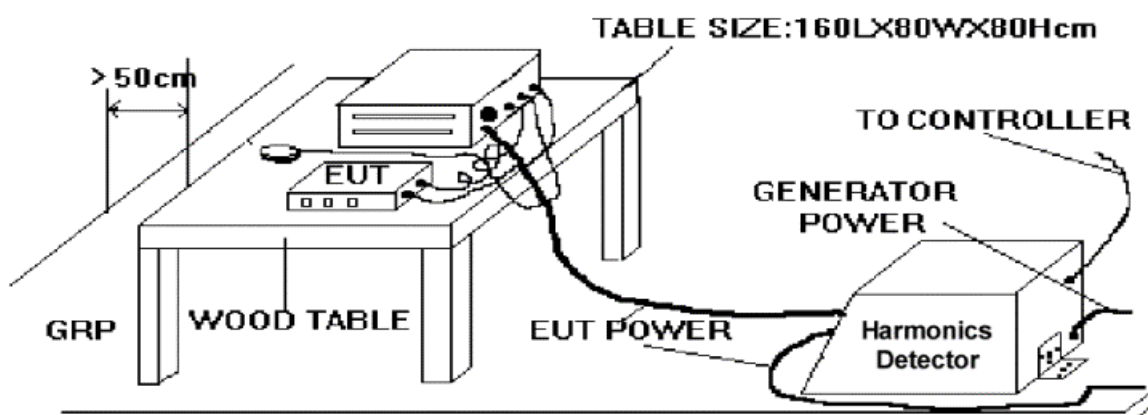
7.2 Test Procedure

The measured values of the harmonics components of the input current, including line current and neutral current, shall be compared with the limits given in Clause 7 of EN 61000-3-2.

7.3 Test Equipment Settings

- Line Voltage : 230 V
- Line Frequency : 50 Hz
- Device Class : D
- Current Measurement Range : High
- Measurement Delay : 10.0 seconds
- Test Duration : 2.00 minutes
- Class determination Pre-test Duration : 10.00 seconds

7.4 Test Setup




7.5 Current Harmonics Test

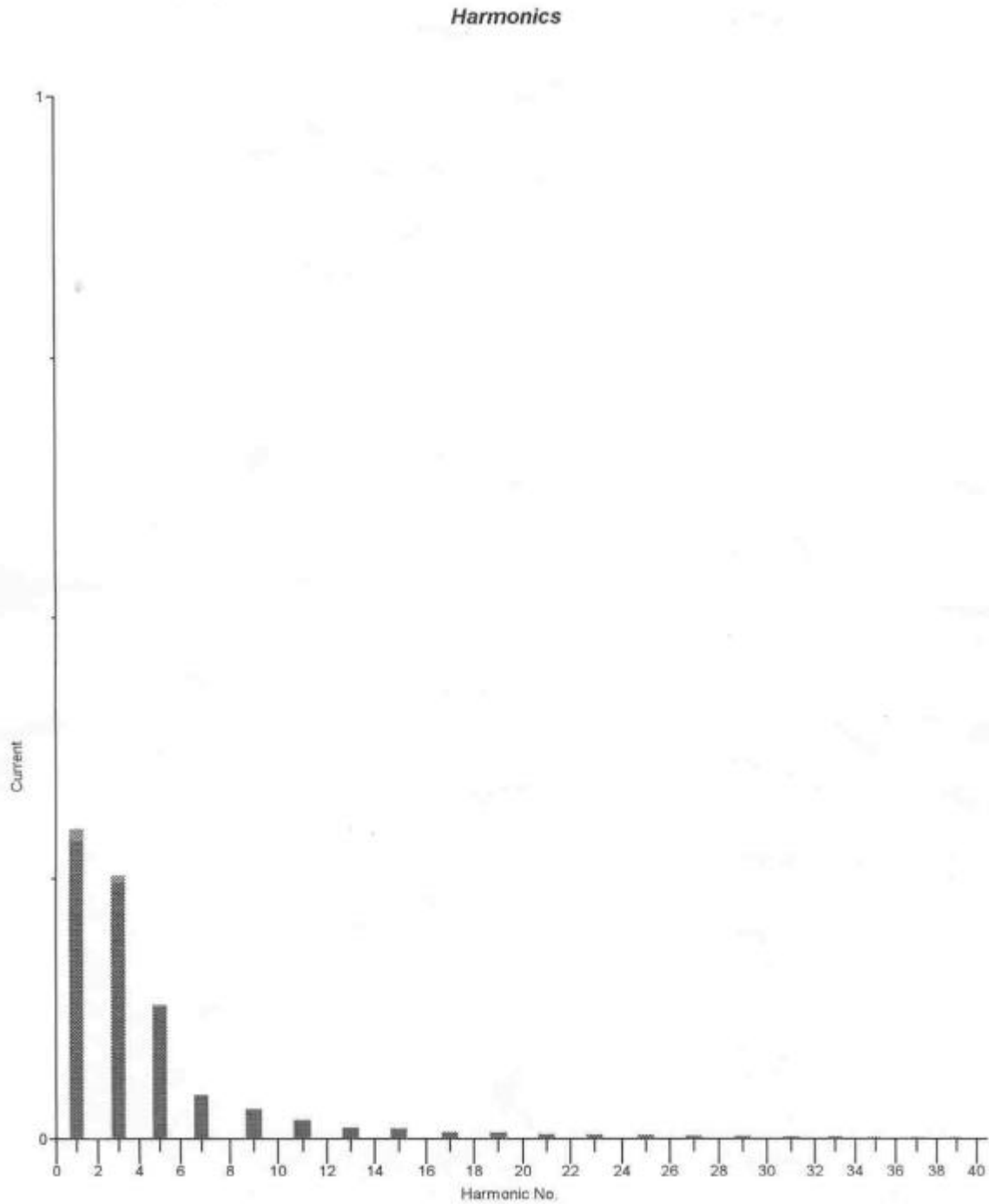
7.5.1 Test Data Of Current Harmonics

- FINAL TEST RESULT : **PASS**
- Fundamental Current : 0.304 A
- Real Power : 75.9 W
- Power Factor : 0.732
- Percent in Envelope : 99.2 %
- Temperature : 25
- Relative Humidity : 58% RH
- Test Date : Mar. 27, 2001

Harmonic Number	Standard Limit (A rms)	Cursor Value (A rms)	Cursor Value (% Limit)	Mean Value (A rms)	Mean Value (% Limit)	Max. Span Value (A rms)
Fund:		0.2861		0.2866		0.2979
2		0.0004		0.0004		0.0011
3	0.2582	0.2455	95.1	0.2451	94.9	0.2526
4		0.0004		0.0002		0.0006
5	0.1443	0.1265	87.7	0.1263	87.5	0.1287
6		0.0002		0.0002		0.0004
7	0.0759	0.0420	55.4	0.0420	55.3	0.0424
8		0.0003		0.0002		0.0006
9	0.0380	0.0279	73.6	0.0278	73.3	0.0288
10		0.0002		0.0001		0.0003
11	0.0266	0.0179	67.5	0.0180	67.6	0.0181
12		0.0002		0.0002		0.0004
13	0.0225	0.0103	45.6	0.0103	45.7	0.0107
14		0.0002		0.0001		0.0003
15	0.0195	0.0099	51.0	0.0099	51.0	0.0102
16		0.0002		0.0003		0.0006
17	0.0172	0.0063	36.9	0.0064	37.0	0.0066
18		0.0001		0.0001		0.0002
19	0.0154	0.0062	40.6	0.0062	40.2	0.0063
20		0.0001		0.0001		0.0002
21	0.0139	0.0046	32.7	0.0046	33.0	0.0047
22		0.0001		0.0001		0.0002
23	0.0127	0.0040	31.6	0.0040	31.3	0.0041
24		0.0001		0.0001		0.0003
25	0.0117	0.0037	31.9	0.0037	31.9	0.0039
26		0.0000		0.0001		0.0002
27	0.0108	0.0030	28.0	0.0031	28.3	0.0032
28		0.0001		0.0001		0.0002
29	0.0101	0.0029	29.2	0.0029	29.2	0.0031
30		0.0001		0.0001		0.0002
31	0.0094	0.0024	25.4	0.0024	25.0	0.0025
32		0.0001		0.0001		0.0003
33	0.0089	0.0023	26.4	0.0024	27.0	0.0025
34		0.0000		0.0001		0.0002
35	0.0084	0.0021	25.5	0.0021	25.6	0.0022
36		0.0000		0.0001		0.0002
37	0.0079	0.0018	22.7	0.0018	22.7	0.0020
38		0.0000		0.0001		0.0002
39	0.0075	0.0018	24.2	0.0018	23.5	0.0019
40		0.0000		0.0001		0.0002

Test Engineer : 
 ROXY CHOU

7.5.2 Test Graph Of Harmonics



8. Voltage Fluctuations Test

8.1 Standard

- Standard : EN 61000-3-3:1995/A1:1998

8.2 Test Procedure

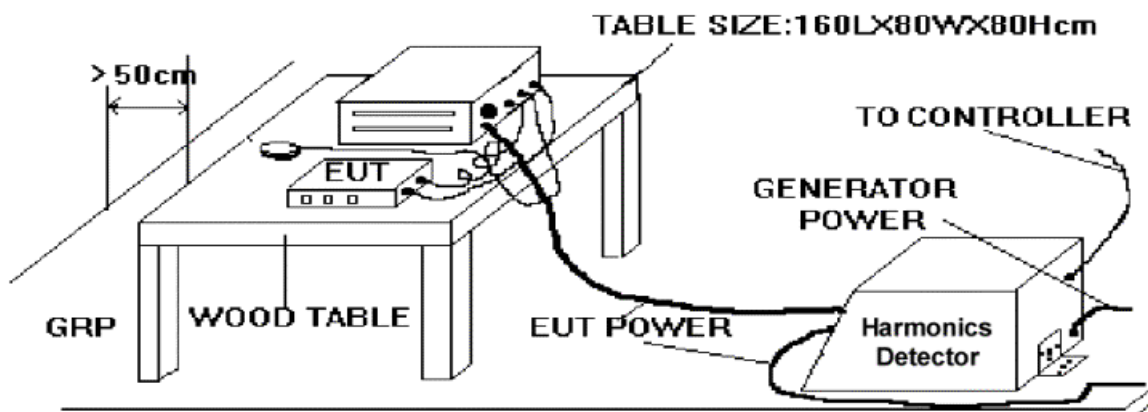
The equipment shall be tested under the conditions of **Clause 5**.

The total impedance of the test circuit, excluding the appliance under test, but including the internal impedance of the supply source, shall be equal to the reference impedance. The stability and tolerance of the reference impedance shall be adequate to ensure that the overall accuracy of $\pm 8\%$ is achieved during the whole assessment procedure.

8.3 Test Equipment Settings

- Line Voltage : 230 V
- Line Frequency : 50 Hz
- Measurement Delay : 10.0 seconds
- Pst Integration Time : 10 minutes
- Pst Integration Periods : 1
- Test Duration : 00:10:00 minutes

8.4 Test Setup




8.5 Test Result Of Voltage Fluctuation And Flicker Test

8.5.1 Test Data Of Voltage Fluctuation And Flicker

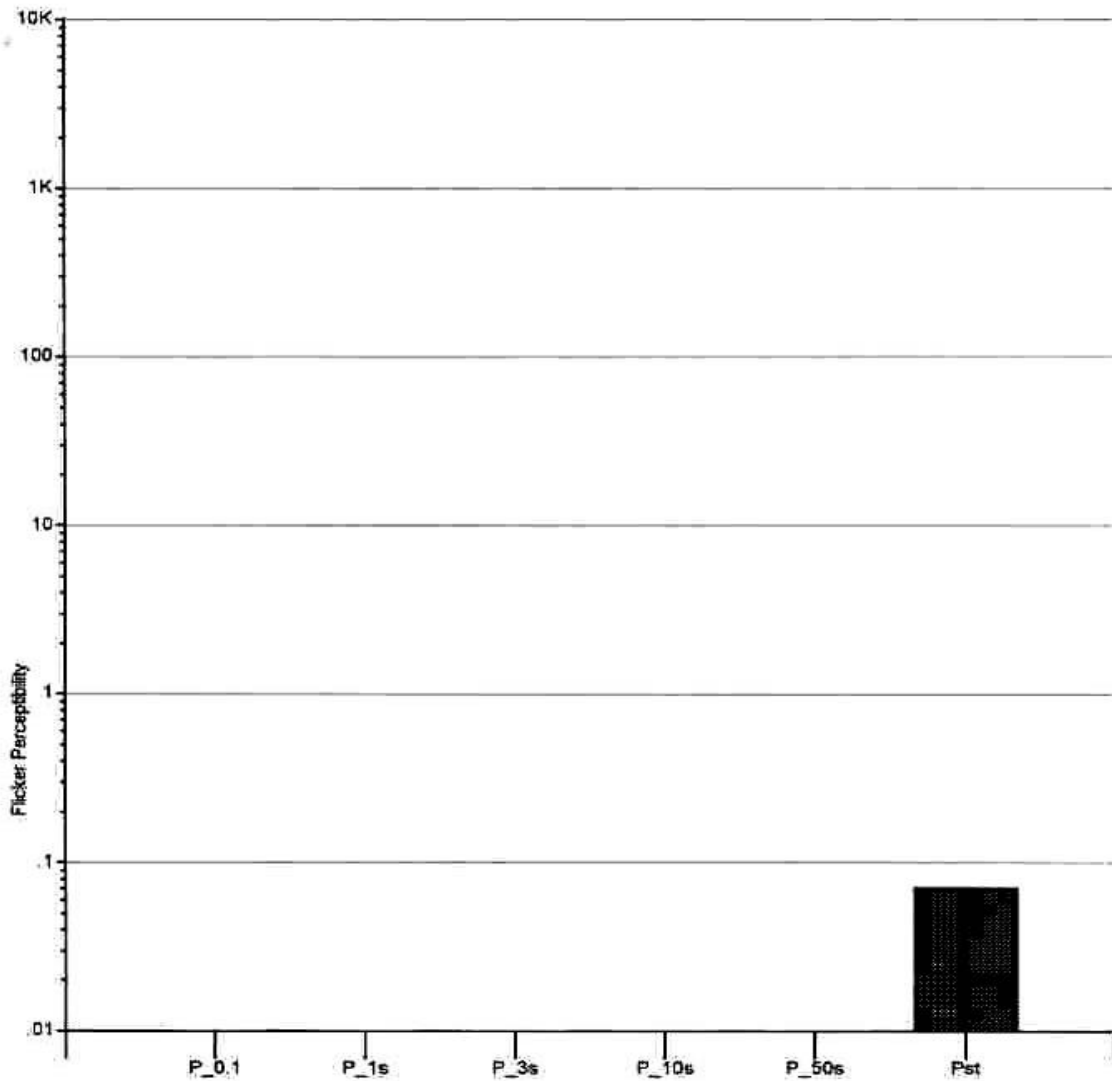
- FINAL TEST RESULT : **PASS**
- Temperature : 25
- Relative Humidity : 58% RH
- Test Date : Mar. 27, 2001

	Pst	Plt	Dc (%)	Dmax (%)	Dt (%)
Reading	0.070	0.00	0.00	0.00	0.00
Limit	0.65	1.0	3.0	4.0	3.0

Test Engineer : 
ROXY CHOU

8.5.2 Test Graph Of Voltage Fluctuation And Flicker

Pst Histogram



8.6 Photographs Of Harmonics Test, Voltage Fluctuation And Flicker Test

FRONT VIEW



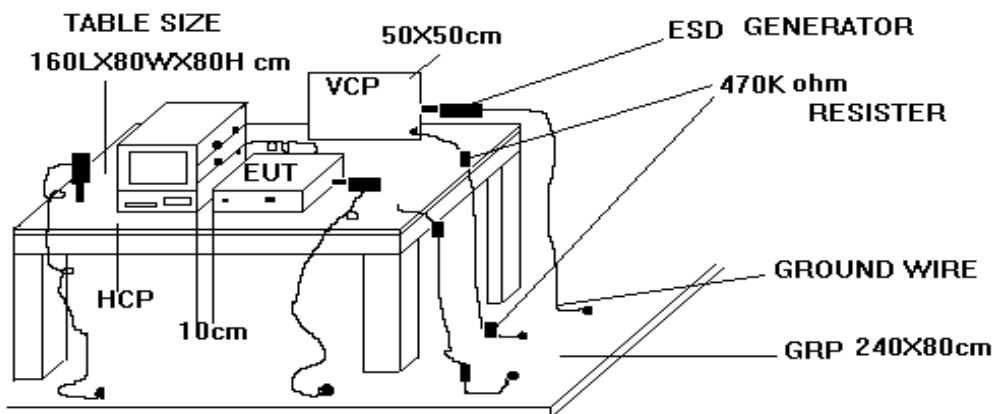
REAR VIEW



9. Electrostatic Discharge Immunity Test (ESD)

Pass Performance Criteria	: B
Basic Standard	: EN 61 000-4-2:1995
Generic Standard	: EN 55024:1998
Level	: 3 for air discharge, : 2 for contact discharge
Tested voltage	: ± 2 / ± 4 / ± 8 KV for air discharge, : ± 2 / ± 4 KV for contact discharge
Temperature	: 22 °C
Relative Humidity	: 52 %
Test Date	: Mar. 23, 2001

9.1 Test setup



The test setup consists of the test generator, EUT and auxiliary instrumentation necessary to perform DIRECT and INDIRECT application of discharges to the EUT as applicable, in the follow manner :

- CONTACT DISCHARGE to the conductive surfaces and to coupling plane;
- AIR DISCHARGE at insulating surfaces.

The preferred test method is that of type tests performed in laboratories and the only accepted method of demonstrating conformance with this standard. The EUT was arranged as closely as possible to arrangement in final installed conditions.

9.2 Test Setup for Tests Performed in Laboratory

A ground reference plane was provided on the floor of the test site. It was a metallic sheet (copper or aluminum) of 0.25 mm, minimum thickness; other metallic may be used but they shall have at least 0.65 mm thickness. In the SPORTON EMC LAB., we provided 1 mm thickness aluminum ground reference plane or 1 mm thickness stainless steel ground reference plane. The minimum size of the ground reference plane is 1 m x 1 m, the exact size depending on the dimensions of the EUT. It was connected to the protective grounding system.

The EUT was arranged and connected according to its functional requirements. A distance of 1m minimum was provided between the EUT and the wall of the lab. and any other metallic structure. In cases where this length exceeds the length necessary to apply the discharges to the selected points, the excess length shall, where possible, be placed non-inductively off the ground reference plane and shall not come closer than 0.2m to other conductive parts in the test setup.

Where the EUT is installed on a metal table, the table was connected to the reference plane via a cable with a 470k ohm resistor located at each end, to prevent a build-up of charge. The test setup was consist a wooden table, 0.8m high, standing on the ground reference plane. A HCP, 1.6 m x 0.8 m, was placed on the table. The EUT and cables was isolated from the HCP by an insulating support 0.5 mm thick. The VCP size, 0.5 m x 0.5 m.

9.3 ESD Test Procedure

- a. In the case of air discharge testing the climatic conditions shall be within the following ranges:
- ambient temperature: 15 to 35 ;
 - relative humidity : 30% to 60%;
 - atmospheric pressure : 68 KPa (680 mbar) to 106 KPa (1060 mbar).
- b. Test programs and software shall be chosen so as to exercise all normal modes of operation of the EUT. The use of special exercising software is encouraged, but permitted only where it can be shown that the EUT is being comprehensively exercised.
- c. The test voltage shall be increased from the minimum to the selected test severity level, in order to determine any threshold of failure. The final severity level should not exceed the product specification value in order to avoid damage to the equipment.
- d. The test shall be performed with single discharges. On preselected points at least ten single discharges (in the most sensitive polarity) shall be applied.
- e. For the time interval between successive single discharges an initial value of one second is recommended. Longer intervals may be necessary to determine whether a system failure has occurred.
- f. In the case of contact discharges, the tip of the discharge electrode shall touch the EUT before the discharge switch is operated.
- g. In the case of painted surface covering a conducting substrate, the following procedure shall be adopted :
- If the coating is not declared to be an insulating coating by the equipment manufacturer, then the pointed tip of the generator shall penetrate the coating so as to make contact with the conducting substrate.
 - Coating declared as insulating by the manufacturer shall only be submitted to the air discharge.
 - The contact discharge test shall not be applied to such surfaces.
- h. In the case of air discharges, the round discharge tip of the discharge electrode shall be approached as fast as possible (without causing mechanical damage) to touch the EUT . After each discharge, the ESD generator (discharge electrode) shall be removed from the EUT. The generator is then retriggered for a new single discharge. This procedure shall be repeated until the discharges are completed. In the case of an air discharge test, the discharge switch, which is used for contact discharge, shall be closed.

9.4 Test Severity Levels

9.4.1 Contact Discharge

Level	Test Voltage (KV) of Contact discharge
1	± 2
2	± 4
3	± 6
4	± 8
X	Specified

Remark : "X" is an open level.

9.4.2 Air Discharge

Level	Test Voltage (KV) of Air Discharge
1	± 2
2	± 4
3	± 8
4	± 15
X	Specified

Remark : "X" is an open level.


9.5 Test Points

9.5.1 Test Result of Air Discharge

Test Point	Voltage	Tested No.	Observation	Result
Case	$\pm 2 / \pm 4 / \pm 8$ KV	BY 10	NORMAL	PASS
Power Switch	$\pm 2 / \pm 4 / \pm 8$ KV	BY 10	NORMAL	PASS
FAN	$\pm 2 / \pm 4 / \pm 8$ KV	BY 10	NORMAL	PASS
LED	$\pm 2 / \pm 4 / \pm 8$ KV	BY 10	NORMAL	PASS
Key pad	$\pm 2 / \pm 4 / \pm 8$ KV	BY 10	NORMAL	PASS
AC SOCKET	$\pm 2 / \pm 4 / \pm 8$ KV	BY 10	NORMAL	PASS
LCD Panel	$\pm 2 / \pm 4 / \pm 8$ KV	BY 10	NORMAL	PASS

9.5.2 Test Result of Contact Discharge

Polarity	Voltage	Tested No.	Observation	Result
Horizontal(At Front)	±2 / ±4 KV	BY 25	NORMAL	PASS
Horizontal (At Left)	±2 / ±4 KV	BY 25	NORMAL	PASS
Horizontal (At Right)	±2 / ±4 KV	BY 25	NORMAL	PASS
Horizontal (At Rear)	±2 / ±4 KV	BY 25	NORMAL	PASS
Vertical (At Front)	±2 / ±4 KV	BY 25	NORMAL	PASS
Vertical (At Left)	±2 / ±4 KV	BY 25	NORMAL	PASS
Vertical (At Right)	±2 / ±4 KV	BY 25	NORMAL	PASS
Vertical (At Rear)	±2 / ±4 KV	BY 25	NORMAL	PASS
Case	±2 / ±4 KV	BY 25	NORMAL	PASS
Screw	±2 / ±4 KV	BY 25	NORMAL	PASS
Bracket	±2 / ±4 KV	BY 25	NORMAL	PASS
PS/2 Port	±2 / ±4 KV	BY 25	NORMAL	PASS
Printer port	±2 / ±4 KV	BY 25	NORMAL	PASS
Com1 Port	±2 / ±4 KV	BY 25	NORMAL	PASS
Key lock	±2 / ±4 KV	BY 25	NORMAL	PASS
VGA port	±2 / ±4 KV	BY 25	NORMAL	PASS

Test Engineer : 
 ROXY CHOU

9.6 Photographs of Electrostatic Discharge Immunity Test

FRONT VIEW



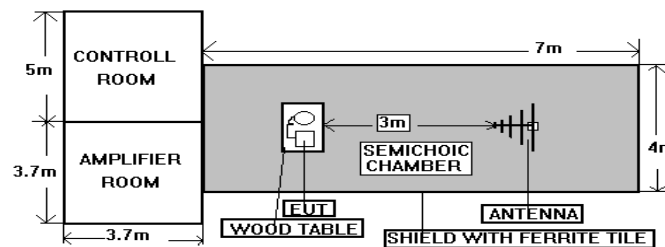
REAR VIEW



10. Radio Frequency Electromagnetic Field Immunity Test (RS)

Pass Performance Criteria	: A
Basic Standard	: EN 61 000-4-3:1996
Generic Standard	: EN 55024:1998
Level	: 2
Frequency Range	: 80-1000 MHz
Field Strength	: 3 V/m (Modulated 80% AM)
Temperature	: 25 °C
Relative Humidity	: 56 %
Test Date	: Mar. 23, 2001

10.1 Test setup



NOTE : The SPORTON 7m x 4m x 4m semichoice chamber is compliance with the sixteen points uniform field requirement as stated in IEC 1000-4-3 Section 6.2.

The procedure defined in this part requires the generation of electromagnetic fields within which the test sample is placed and its operation observed. To generate fields that are useful for simulation of actual (field) conditions may require significant antenna drive power and the resultant high field strength levels. To comply with local regulations and to prevent biological hazards to the testing personnel, it is recommended that these tests be carried out in a shielded enclosure or semichoice chamber.

10.2 Test Procedure


- a. The equipment to be tested is placed in the center of the enclosure on a wooden table. The equipment is then connected to power and signal leads according to pertinent installation instructions.
- b. The bilog antenna which is enabling the complete frequency range of 80-1000 MHz is placed 3m away from the equipment. The required field strength is determined by placing the field strength meter(s) on top of or directly alongside the equipment under test and monitoring the field strength meter via a remote field strength indicator outside the enclosure while adjusting the continuous-wave to the applicable antennae.
- c. The test is normally performed with the antenna facing the most sensitive side of the EUT. The polarization of the field generated by the biconical antenna necessitates testing each position twice, once with the antenna positioned vertically and again with the antenna positioned horizontally. The circular polarization of the field from the log-spiral antenna makes a change of position of the antenna unnecessary.
- d. At each of the above conditions, the frequency range is swept 80-1000 MHz, pausing to adjust the R.F. signal level or to switch oscillators and antenna. The rate of sweep is in the order of 1.5×10^{-3} decades/s. The sensitive frequencies or frequencies of dominant interest may be discretely analyzed.

10.3 Test Severity Levels

Frequency Band : 80-1000 MHz

Level	Test field strength (V/m)
1	1
2	3
3	10
X	Specified

Remark : "X" is an open class.

Test Engineer : 
 ROXY CHOU

10.4 Photographs of Radio Frequency Electromagnetic Field Immunity Test

FRONT VIEW



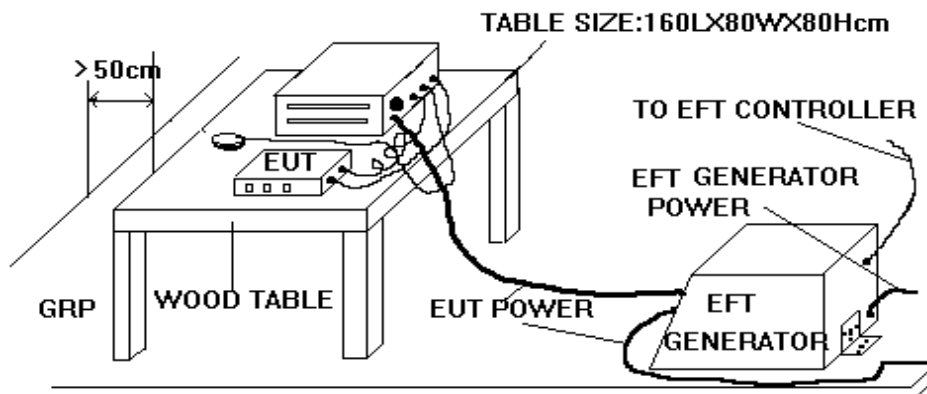
REAR VIEW



11. Electrical Fast Transient/Burst Immunity Test (EFT/BURST)

Pass Performance Criteria	: B
Basic Standard	: EN 61 000-4-4:1995
Generic Standard	: EN 55024:1998
Level	: on Power Supply -- 2 : on I/O signal, data and control line -- 2
Tested voltage	: on Power Supply -- 0.5/1.0 KV : on I/O signal, data and control line -- 0.25/0.50 KV
Temperature	: 25°C
Relative Humidity	: 58%
Test Date	: Mar. 23, 2001

11.1 Test setup



The EUT was placed on a ground reference plane and was insulated from it by an insulating support about 0.1m thick. If the EUT is table-top equipment, it was located approximately 0.8m above the GRP.. The GRP. was a metallic sheet (copper or aluminum) of 0.25 mm ,minimum thickness; other metallic may be used but they shall have at least 0.65 mm thickness. It shall project beyond the EUT by at least 0.1m on all sides and connected to the protective earth. In the SPORTON EMC LAB. we provided 1 mm thickness aluminum ground reference plane or 1 mm thickness stainless steel ground reference plane. The minimum size of the ground reference plane is 1 m x 1 m, the exact size depending on the dimensions of the EUT. It was connected to the protective grounding system. The EUT was arranged and connected according to its functional requirements. The minimum distance between the EUT and other conductive structures, except the GRP. beneath the EUT, was more than 0.5 m. Using the coupling clamp, the minimum distance between the coupling plates and all other conductive structures, except the GRP. beneath the EUT, was more than 0.5 m. The length of the signal and power lines between the coupling device and the EUT was 1m or less.

11.2 Test on Power Line

- a. The EFT/B-generator was located on the GRP.. The length from the EFT/B-generator to the EUT as not exceed 1 m.
- b. The EFT/B-generator provides the ability to apply the test voltage in a non-symmetrical condition to the power supply input terminals of the EUT.

11.3 Test on Communication Lines

- a. The coupling clamp is composed of a clamp unit for housing the cable (length more than 3 m), and was placed on the GRP..
- b. The coupling clamp provides the ability of coupling the fast transient/bursts to the cable under test.

11.4 Test Procedure


- a. In order to minimize the effect of environmental parameters on test results, the climatic conditions when test is carrying out shall comply with the following requirements:
- ambient temperature: 15 to 35 ;
 - relative humidity : 45% to 75%;
 - atmospheric pressure : 68 KPa (680 mbar) to 106 KPa (1060 mbar).
- b. In order to minimize the effect of environmental parameters on test results, the electromagnetic environment of the laboratory shall not influence the test results.
- c. The variety and diversity of equipment and systems to be tested make it difficult to establish general criteria for the evaluation of the effects of fast transients/bursts on equipment and systems.
- d. The test results may be classified on the basic of the operating conditions and the functional specification of the equipment under test, according to the following performance criteria :
- Normal performance within the specification limits.
 - Temporary degradation or loss of function or performance which is self-recoverable.
 - Temporary degradation or loss of function or performance which requires operator intervention or system reset.
 - Degradation or loss of function which is not recoverable due to damage of equipment (components).

11.5 Test Severity Levels

The following test severity levels are recommended for the fast transient/burst test :

Open circuit output test voltage \pm 10%		
Level	On Power Supply	On I/O signal, data and control line
1	0.5 KV	0.25 KV
2	1.0 KV	0.50 KV
3	2.0 KV	1.00 KV
4	4.0 KV	2.00 KV
X	Specified	Specified

Remark : " X " is an open level. The level is subject to negotiation between the user and the manufacturer or is specified by the manufacturer.

Test Engineer : 
 ROXY CHOU

11.6 Photographs of Electrical Fast Transient/BURST Immunity Test

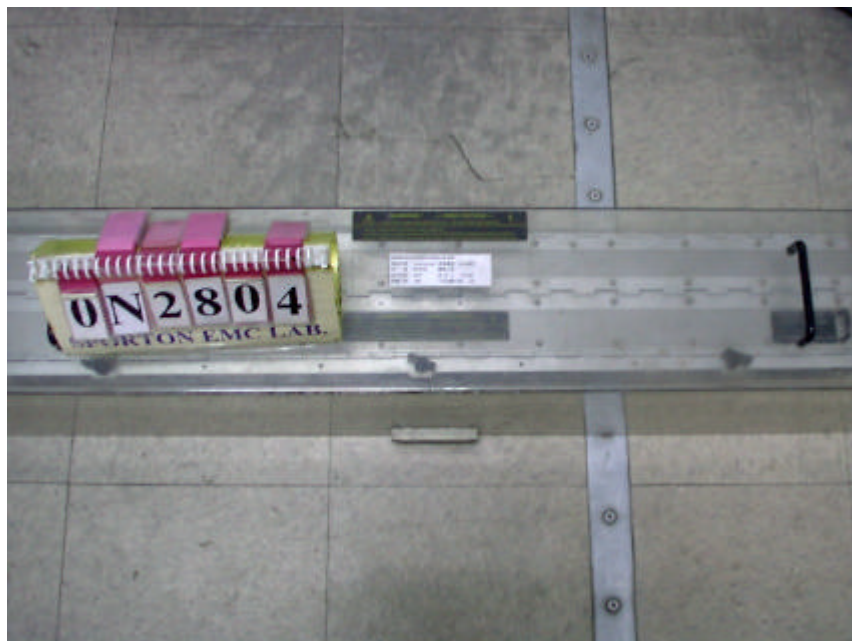
FRONT VIEW



REAR VIEW



CLAMP



12. SURGE IMMUNO SURGE IMMUNITY TEST

- **Pass** performance Criteria : **B**
- Basic Standard : EN 61 000-4-5 (1995)
- Generic Standard : EN 55 024:1998
- Input Voltage, Frequency : 230Vac, 50Hz
- Level : on Signal ports And Telecommunication – N/A
: on Input AC Power Port -- 3
- Test Voltage : on Signal ports And Telecommunication – N/A
: on Input AC Power Port -- $\pm 1.0 / \pm 2.0$ KV
- Temperature : 26 °C
- Relative Humidity : 58 %
- Test Date : May. 23, 2001
- Remake : The test on signal and telecommunication ports is not required due to Normal functioning cannot be achieved because of the input of the CDN on the EUT.

12.1 TEST RECORD

Voltage (KV)	Test Location	Polarity	Phase Angle				Test Result
			0°	90°	180°	270°	
1 KV	L - N	+	B	B	B	B	<u>PASS</u>
		-	B	B	B	B	<u>PASS</u>
2 KV	L - PE	+	B	B	B	B	<u>PASS</u>
		-	B	B	B	B	<u>PASS</u>
	N - PE	+	B	B	B	B	<u>PASS</u>
		-	B	B	B	B	<u>PASS</u>

⊕ Remark : PE = DC output GND

12.2 TEST LEVEL

Level	Open-circuit test voltage, $\pm 10\%$, KV
1	0.5
2	1.0
3	2.0
4	4.0
x	Specified

NOTE - x is an open class.
This level can be specified in the product specification.

12.3 TEST PROCEDURE

- a. Climatic conditions
The climatic conditions shall comply with the following requirements :
 - ambient temperature : 15 to 35
 - relative humidity : 10 % to 75 %
 - atmospheric pressure : 86 kPa to 106 kPa (860 mbar to 1060 mbar)
- b. Electromagnetic conditions
The electromagnetic environment of the laboratory shall not influence the test results.
- c. The test shall be performed according the test plan that shall specify the test set-up with
 - generator and other equipment utilized;
 - test level (voltage/current);
 - generator source impedance;
 - internal or external generator trigger;
 - number of tests : at least five positive and five negative at the selected points;
 - repetition rate : maximum 1/min.
 - inputs and outputs to be tested;
 - representative operating conditions of the EUT;
 - sequence of application of the surge to the circuit;

- phase angle in the case of a.c. power supply;
- actual installation conditions, for example :
 - AC : neutral earthed,
 - DC : (+) or (-) earthed to simulated the actual earthing conditions.

- d. If not otherwise specified the surges have to be applied synchronized to the voltage phase at the zero-crossing and the peak value of the a.c. voltage wave (positive and negative).

- e. The surges have to be applied line to line and line(s) and earth. When testing line to earth, the test voltage has to be applied successively between each of the lines and earth, if there is no other specification.

- f. The test procedure shall also consider the non-linear current-voltage characteristics of the equipment under test. Therefore the test voltage has to be increased by steps up to the test level specified in the product standard or test plan.


- g. All lower levels including the selected test level shall be satisfied. For testing the secondary protection, the output voltage of the generator shall be increased up to the worstcase voltage breakdown level (let-through level) of the primary protection.

- h. If the actual operating signal sources are not available, they may be simulated. Under no circumstances may the test level exceed the product specification. The test shall be carried out according to the test plan.

- i. To find all critical points of the duty cycle of the equipment, a sufficient number of positive and negative test pulses shall be applied. For acceptance test a previously unstressed equipment shall be used to the protection devices shall be replaced.

12.4 OPERATING CONDITION

Full system

Test Engineer : 
ROXY CHOU

12.5 Photographs of SURGE IMMUNITY TEST

FRONT VIEW



REAR VIEW



13.CONDUCTED DISTURBANCES INDUCED BY RADIO-FREQUENCY FIELD IMMUNITY TEST (CS)

- **Pass** performance Criteria : **A**
- Basic Standard : EN 61 000-4-6 (1996)
- Generic Standard : EN 55 024 :1998
- Input Voltage, Frequency : AC 230V, 50Hz
- Level : 2
- Test Voltage : 3 V/rms (Modulated, 1KHz, 80%, AM)
- Frequency Range : 0.15 MHz to 80 MHz
- Test Port : on Input AC Power Port And Signal ports
- Temperature : 25° C
- Relative Humidity : 56 %
- Test Date : May. 23, 2001

13.1 TEST LEVEL

Level	Voltage Level (EMF),
1	1 V
2	3 V
3	10 V
x	Specified

NOTE - x is an open class.
This level can be specified in the product specification.

13.2 OPERATING CONDITION

Full system

13.3 TEST PROCEDURE

- a. The EUT shall be operated within its intended climatic conditions. The temperature and relative humidity should be recorded.
- b. This test method test can be performed without using a sell shielded enclosure. This is because the disturbance levels applied and the geometry of the setups are not likely to radiated a high amount of energy, especially at the lower frequencies. If under certain circumstances the radiated energy is too high, a shielded enclosure has to be used.
- c. The test shall be performed with the test generator connected to each of the coupling and decoupling devices in turn while the other non-excited RF-input ports of the coupling devices are terminated by a 50 ohm load resistor.
- d. Filters shall be used to prevent (higher order or sub-) harmonics form disturbing the EUT. A High-Pass Filter. 100KHz, (HPF) may be required with the test generator. The band stop characteristics of the Low-Pass Filters (LPF) shall be sufficient to suppress the harmonics down to the immunity level required within that band. These filters shall be inserted with the test generator before setting the test level.
- e. The frequency range is swept from 150 KHz to 230 MHz, using the signal levels established during the setting process, and with the disturbance signal 80% amplitude modulated with a 1KHz sinewave, pausing to adjust the RF-signal level or to switch coupling devices as necessary. The rate of sweep shall no exceed 1.5×10^{-3} decades/s. Where the frequency is swept incrementally, the step size shall no exceed 1% of the start and thereafter 1% of the preceding frequency value.
- f. The dwell time at each frequency shall not be less than the time necessary for the EUT to be exercised, and able to respond. Sensitive frequencies e.g. clock frequency(ies) and harmonics or frequencies of dominant interest shall be analyzed separately.
- g. An alternative test procedure may be adopted, wherein the frequency range is swept incrementally, with a step size not exceeding 4% of the start ad thereafter 4% of the preceding frequency value. The test level should be at least twice the value of the specified test level.
- h. In cases of dispute, the test procedure using a step size not exceeding 1% of the start and thereafter 1% of preceding frequency value shall take precedence.
- i. Attempts should be made to fully exercise the EUT during testing, and to fully interrogate all exercise modes selected for susceptibility.
- j. The use of special exercising programs is recommended.
- k. Testing shall be performed according to a Test Plan, which shall be included in the test report.
- l. It may be necessary to carry out some investigatory testing in order to establish some aspects of the test plan.

Test Engineer : _____


ROXY CHOU

14. Power Frequency Magnetic Field immunity tests

The EUT does not contain device susceptible to magnetic fields.
So the power frequency magnetic field test is not applicable to this equipment.

15. VOLTAGE DIPS AND VOLTAGE INTERRUPTIONS IMMUNITY TESTS

- **Pass** performance Criteria : C for voltage interruption, B for voltage dips
- Basic Standard : EN 61 000-4-11 (1994)
- Generic Standard : EN 55 024:1998
- Input Voltage, Frequency : AC 230V, 50Hz
- Temperature : 26 °C
- Relative Humidity : 58 %
- Test Date : Mar. 23, 2001

15.1 TEST RECORD OF VOLTAGE INTERRUPTION

Voltage (V)	Phase Angle								% Reduction	periods (s)
	0 °	45 °	90 °	135 °	180 °	225 °	270 °	315 °		
230	C	C	C	C	C	C	C	C	>95%	250

15.2 TEST RECORD OF VOLTAGE DIPS

Voltage (V)	Phase Angle								% Reduction	periods (s)
	0 °	45 °	90 °	135 °	180 °	225 °	270 °	315 °		
230	B	B	B	B	B	B	B	B	30	25
230	B	B	B	B	B	B	B	B	>95 %	0.5

15.3 TESTING REQUIREMENT AND PROCEDURE

The test was based on EN 61 000-4-11 (1994)


15.4 TEST CONDITIONS

1. Source voltage and frequency : 230V / 50Hz, Single phase.
2. Test of interval : 10 sec.
3. Level and duration : Sequency of 3 dips/interrupts.
4. Voltage rise (and fall) time : 1 ~ 5 μ s.
5. Test severity :

Voltage dip and Interrupt reduction (%)	Test Duration (ms)
30	500
60	100
100	10
100	80
100	5000

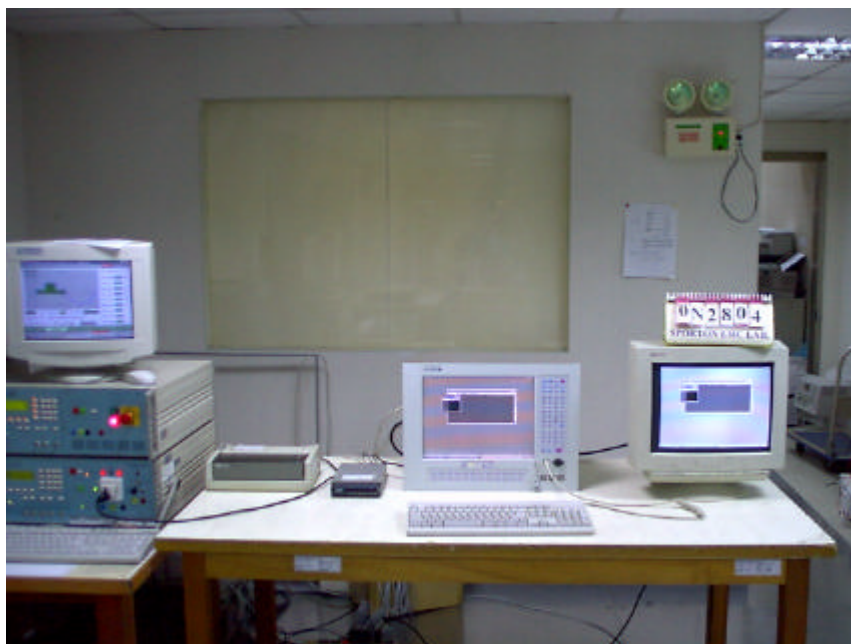
15.5 OPERATING CONDITION

Full system

Test Engineer : 
ROXY CHOU

15.6 Photographs of VOLTAGE DIPS AND VOLTAGE INTERRUPTIONS IMMUNITY TESTS

FRONT VIEW



REAR VIEW



16. Antenna Factor & Cable Loss

Frequency (MHz)	Antenna Factor (dB)	Cable Loss (dB)
30	17.1	0.9
35	17.5	1.0
40	15.1	1.0
45	12.9	1.1
50	11.4	1.2
55	8.8	1.2
60	6.3	1.2
65	6.2	1.3
70	6.2	1.3
75	6.5	1.3
80	6.8	1.3
85	7.7	1.3
90	8.7	1.4
95	9.5	1.4
100	10.4	1.5
110	11.6	1.7
120	12.8	1.8
130	13.0	1.8
140	12.7	1.9
150	10.6	2.0
160	9.9	2.2
170	9.5	2.3
180	8.6	2.3
190	8.8	2.4
200	9.0	2.6
220	10.4	2.7
240	11.8	3.1
260	12.7	3.0
280	13.2	3.1
300	13.6	3.6
320	14.1	3.7
340	14.6	3.8
360	15.2	3.9
380	15.7	4.1
400	16.3	4.2
450	17.6	4.5
500	19.0	4.8
550	19.5	4.9
600	19.9	5.3
650	19.3	5.8
700	18.6	6.3
750	19.2	6.5
800	19.8	6.8
850	21.2	6.8
900	22.6	7.4
950	22.4	7.6
1000	22.1	8.0

NHOP4

17. List of Measuring Equipment Used

<EMI>

Instrument	Manufacturer	Model No.	Serial No.	Characteristics	Calibration Date	Remark
Test Receiver	R&S	ESH3	893495/013	9KHz – 30MHz	Jun. 19, 2000	Conduction
Spectrum Monitor	R&S	EZM	894987/011	-	Jun. 19, 2000	Conduction
LISN	EMCO	3810/2	9703-1838	50uH / 50 ohm	Sep. 01, 2000	Conduction
LISN	KYORITSU	KNW-407	8-1010-15	50uH / 50 ohm	Nov. 13, 2000	Conduction
Power Filter	CORCOM	MR12030	N/A	30A*2	N/A	Conduction
Spectrum Analyzer (site 4)	Advantest	R3261C	81720145	9KHz - 2.6GHz	May. 03, 2000	Radiation
Amplifier (Site 4)	HP	8447D	2944A08292	0.1MHz - 1.3GHz	Nov. 13, 2000	Radiation
Bilog Antenna (Site 4)	CHASE	CBL6112B	2444	30MHz - 2GHz	Jun. 24, 2000	Radiation
Half-wave dipole antenna (Site 4)	EMCO	3121C	8912-495	20MHz - 1GHz	Aug. 06, 2000	Radiation
Turn Table	EMCO	2080	9805-2065	0 ~ 360 degree	N/A	Radiation
Antenna Mast	EMCO	2075	9804-2151	1 m - 4 m	N/A	Radiation

<EMS>

Instrument	Manufacturer	Model No.	Characteristics	Calibration Date	Remark
ESD Simulator	KEYTEK	MZ-15/EC	0 KV - 15 KV	Apr. 14, 2000	ESD
OMNI-Tip	KEYTEK	TPC-2	0 KV - 15 KV	Jul. 23, 2000	ESD
Amplifier	AR	100W 1000M3	80 MHz - 1 GHz	N/A	RS
Isotropic Field Probe	AR	FP3000A	10 KHz - 1 GHz	Jun. 19, 2000	RS
IEEE-488 Interface	AR	CP3000	N/A	N/A	RS
System Interface	EMC Automation	200	HP-IB INTERFACE	N/A	RS
Power Meter	EMC Automation	438A	100 KHz -4.2 GHz	N/A	RS
Video Camera controller	EMC Automation	VCC-01	N/A	N/A	RS
Signal Generator	HP	8648A	100 KHz - 1 GHz	Sep. 10, 2000	RS
Signal Generator	R&S	SMX	100 KHz - 1 GHz	Nov. 06, 2000	RS
Antenna	CHASE	CBL6121A	26 MHz - 1 GHz	Jun. 12, 2000	RS
Amplifier	AR	75W 75A220	25MHz - 300MHz	Jun. 14, 2000	RS
EFT Generator	KEYTEK	CE-40	0 KV - 4.4 KV	Jul. 09, 2000	EFT
Capacitive Clamp	KEYTEK	CE-40-CCL	0 KV - 2 KV	Jun. 22, 2000	EFT
Harmonic/Flicker Test System	HP	6843A	4800VA 90A / 48A PEAK	Nov. 14, 2000	Harmonics, Flicker
Combination Wave Generator	EMC PARTNER AG Switzerland	MIG0603IN2	6 KV, 3 KA	Feb. 04, 2001	SURGE
Conducted Immunity Test System	FRANKONIA	CIT-10/W	100KHz ~ 266MHz	Jan. 09, 2001	CS
Magnetic field Antenna	EMC PARTNER	MF-1000	0.5 up to 150A / m	Feb. 01. 2001	Magnetic
EMC Immunity Tester	EMC PARTNER AG Switzerland	TRANSIENT 1000	0 ~ 260 rms, 16A	Feb. 01, 2001	DIP

18. Notice for Class A Product

This Notice is for class A product only. If the Equipment under Test is a class B product, this notice should be disregarded.

Class A ITE is a category of all other ITE which satisfies the class A ITE limits but not the class B ITE limits. Such equipment should not be restricted in its sale but the following warning shall be included in the instructions for use:

Warning

This is a class A product. In a domestic environment this product may cause radio interference in which case the user may be required to take adequate measures.

19. Declaration of Conformity and the CE Mark

There are three possible procedures pertaining to the declaration of conformity :

19.1 Conformity Testing and Declaration of Conformity by the Manufacturer or His Authorized Representative Established within the Community or by an Importer.

- Article 10 (1) of the EMC Directive,
- § 3 (1) no. 2a of the EMC Act.

19.2 Declaration of Conformity Issued by the Manufacturer or His Authorized Representative Established within the Community or by an Importer Following Testing of the Product and Issued of an EC certificate of conformity by a competent body.

- Article 10 (2) of the EMC Directive,
- § 3 (1) no. 2b of the EMC Act.

19.3 Declaration of Conformity Issued by the Manufacturer or His Authorized Representative Established within the Community or by an Importer Following Testing and Certification of the Product by a Notified Body.

- Article 10 (5) of the EMC Directive,
- § 3 (1) no. 2b of the EMC Act (radio transmitting installations).

19.4 Specimen For The CE Marking Of Electrical / Electronical Equipment

The components of the CE marking shall have substantially the same vertical dimension, which may not be less than 5 mm.



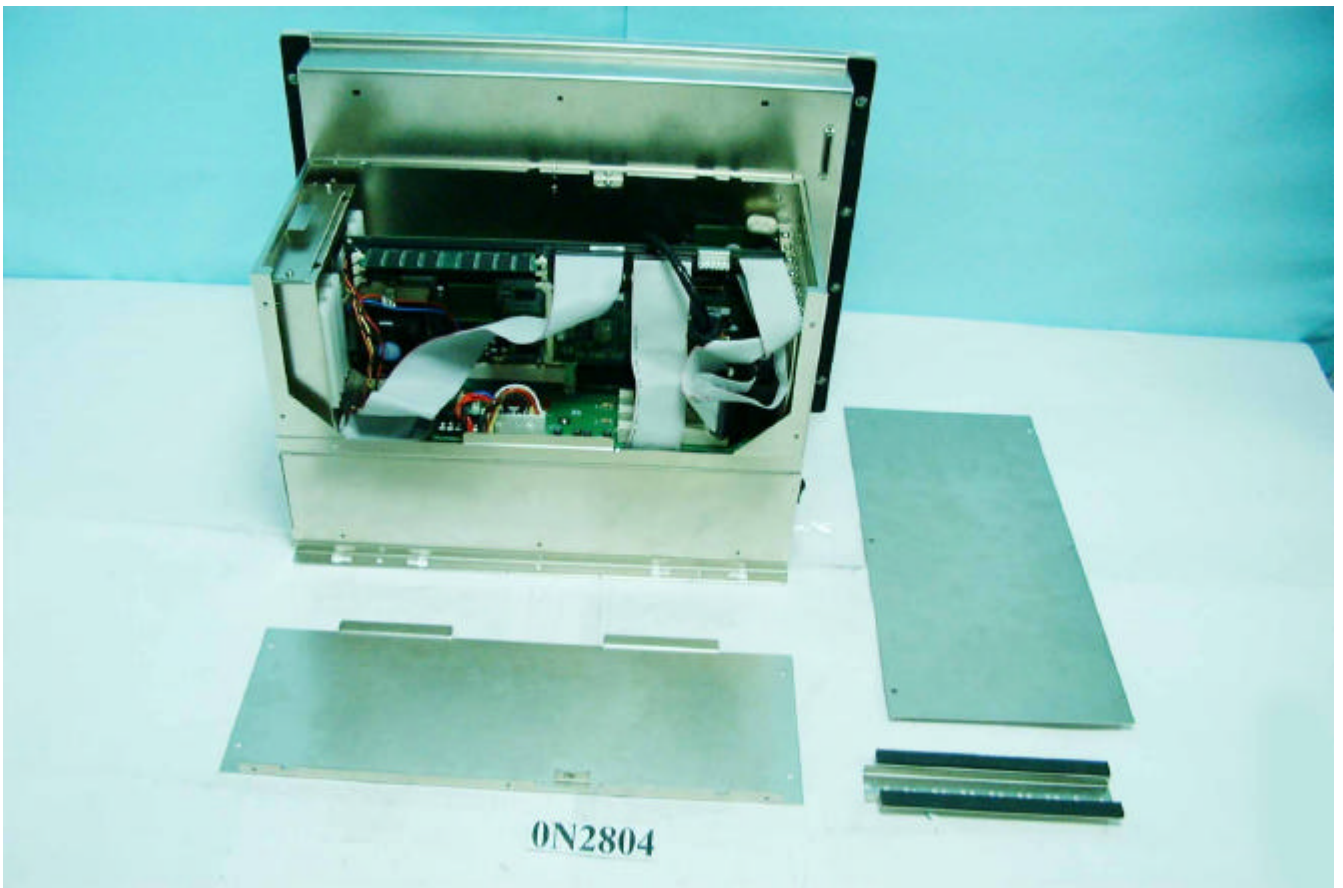
APPENDIX A. Photographs of EUT



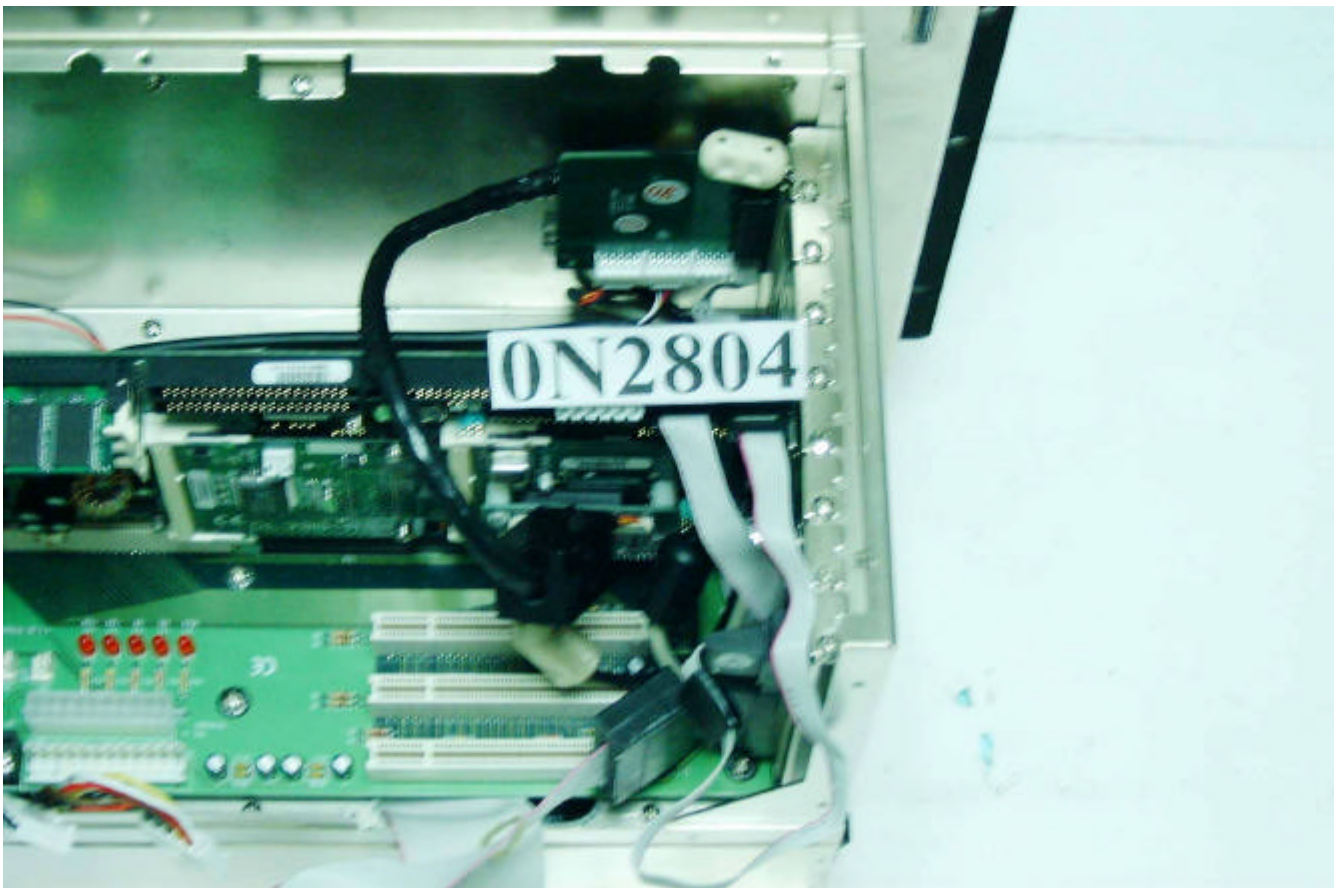
0N2804-01.jpg



0N2804-02.jpg



0N2804-03.jpg



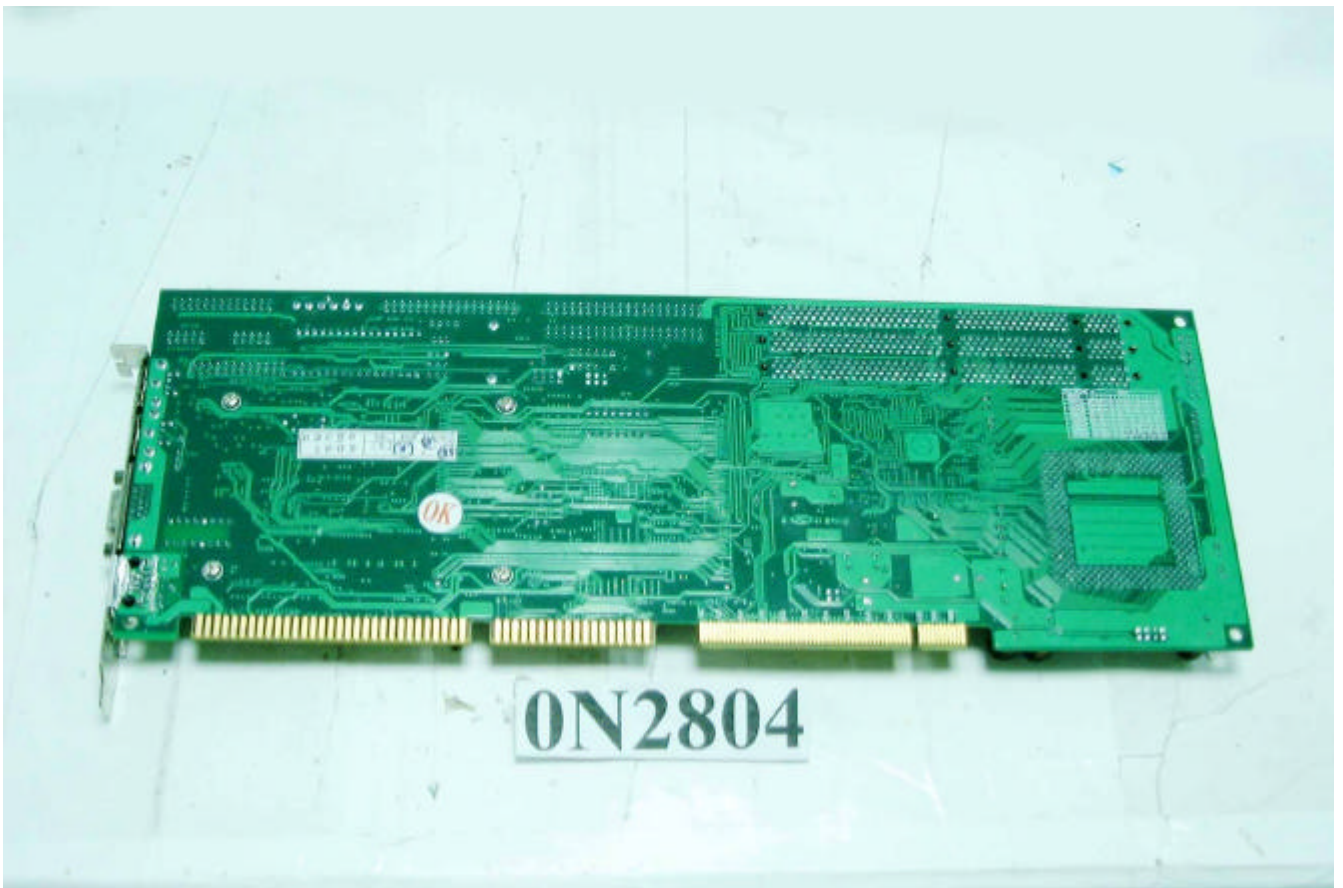
0N2804-04.jpg



0N2804-05.jpg



0N2804-06.jpg



0N2804-07.jpg



0N2804-08.jpg



0N2804-09.jpg



0N2804-10.jpg



0N2804-11.jpg



0N2804-12.jpg



0N2804-13.jpg



0N2804-14.jpg



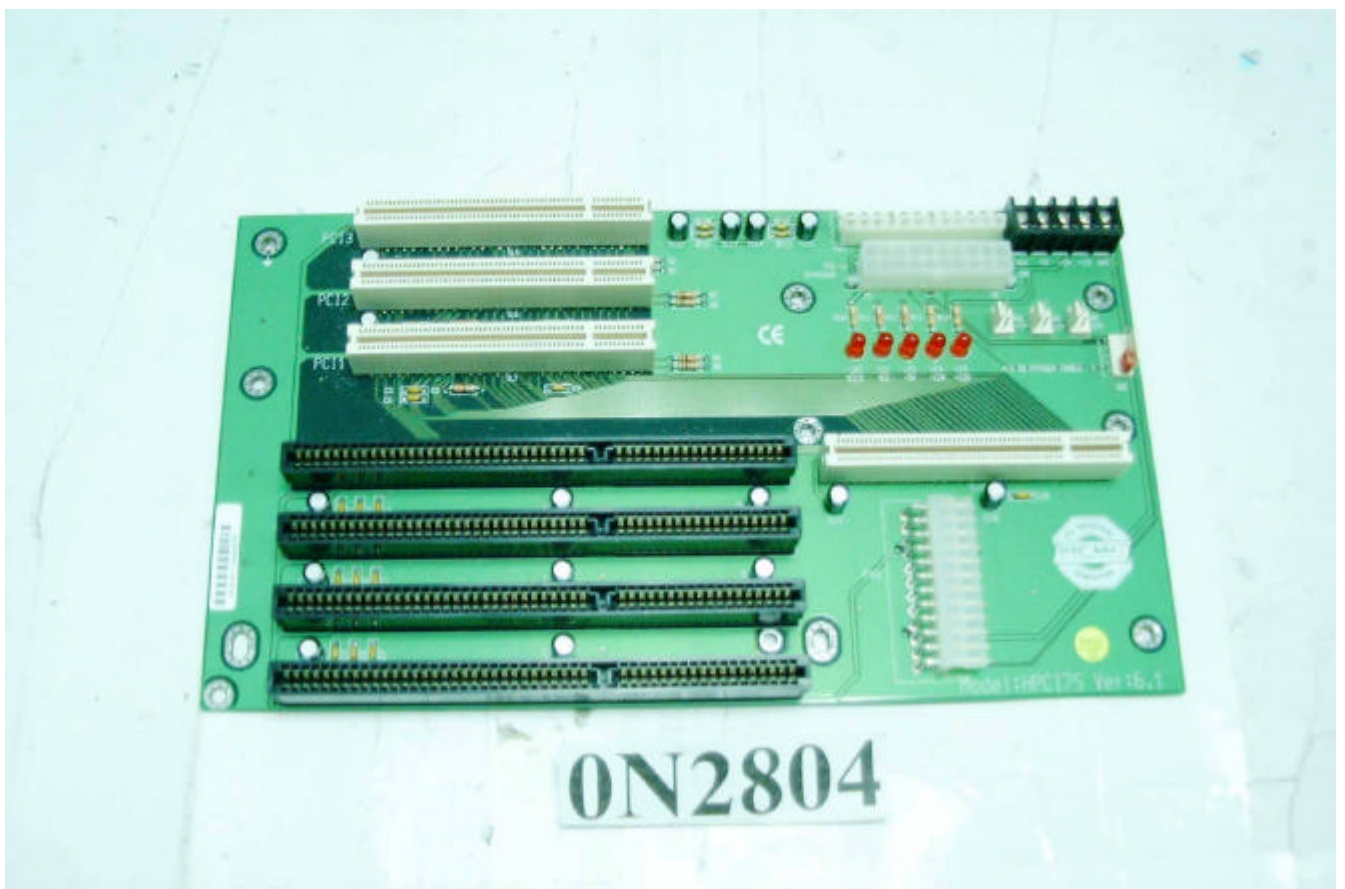
0N2804-15.jpg



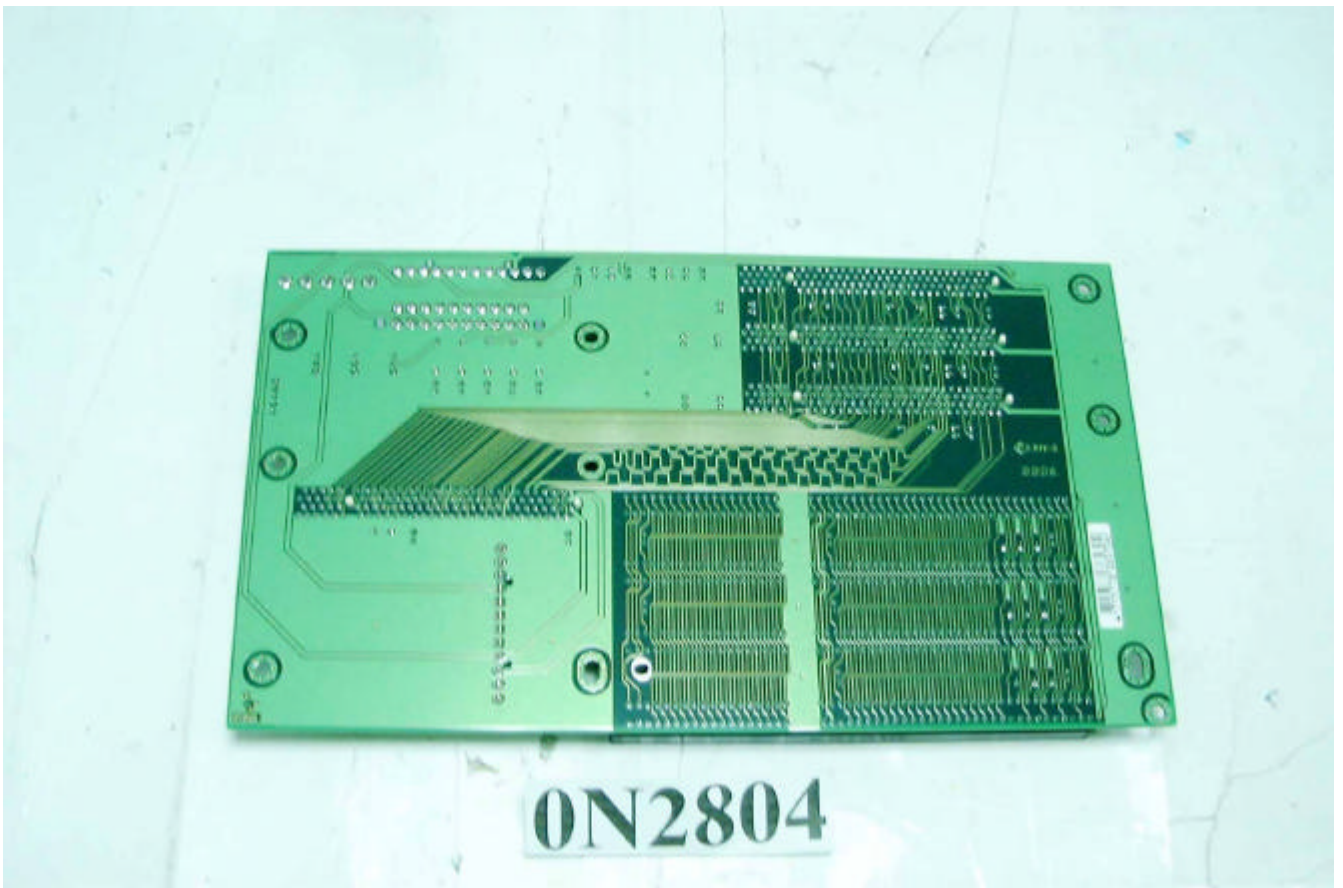
0N2804-16.jpg



0N2804-17.jpg



0N2804-18.jpg



0N2804-19.jpg



0N2804-20.jpg



0N2804-21.jpg



0N2804-22.jpg

0N2804

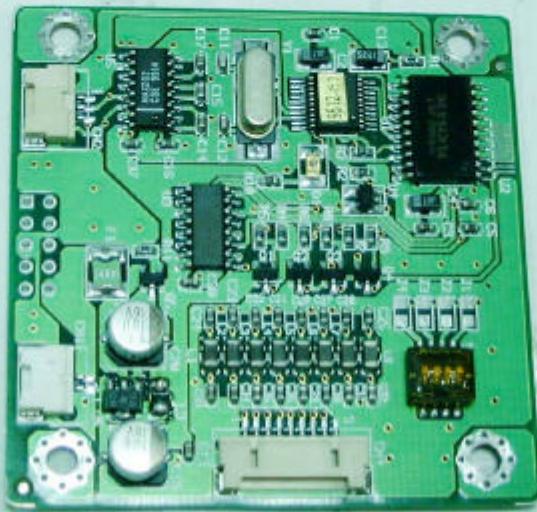


0N2804-23.jpg

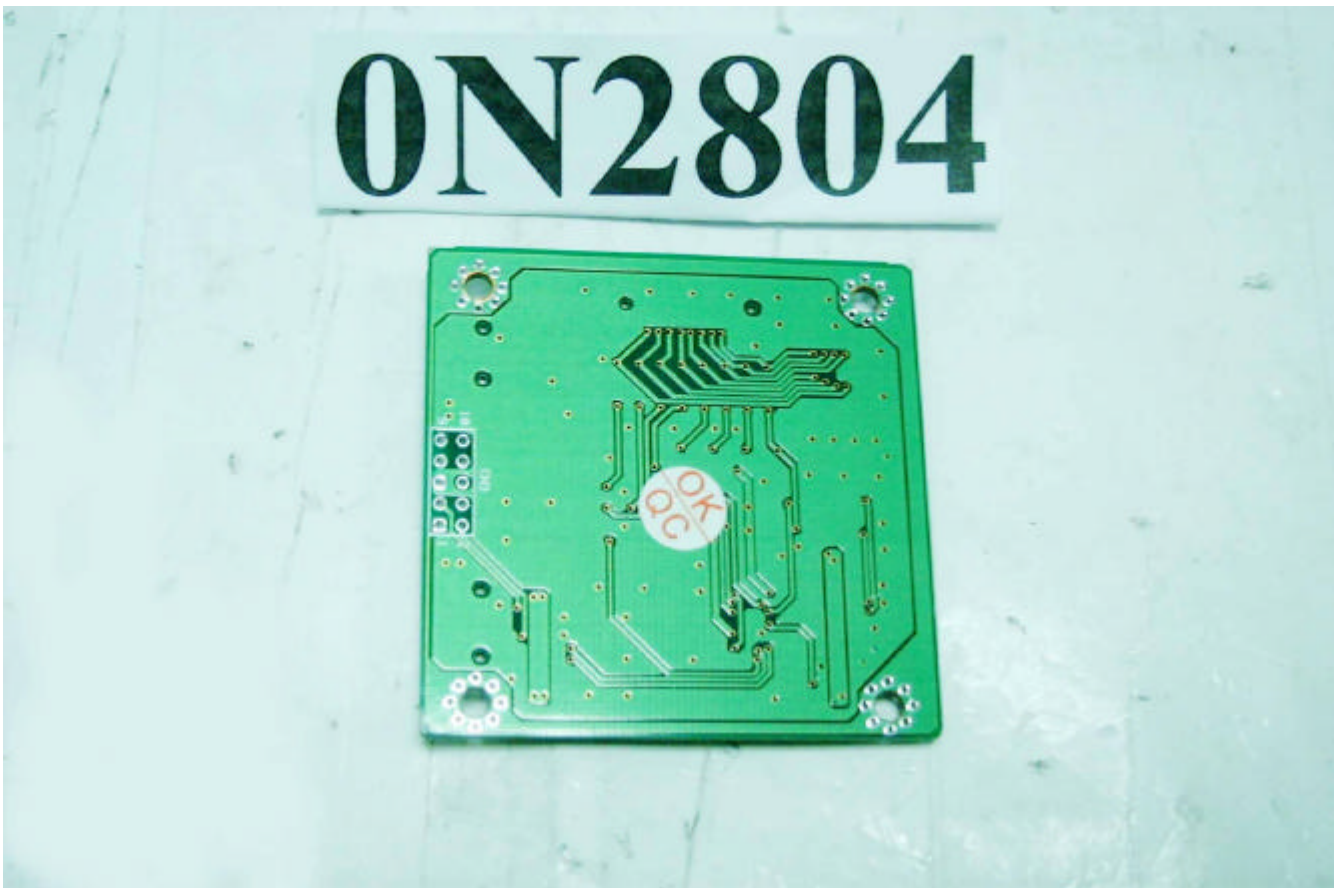


ON2804-24.jpg

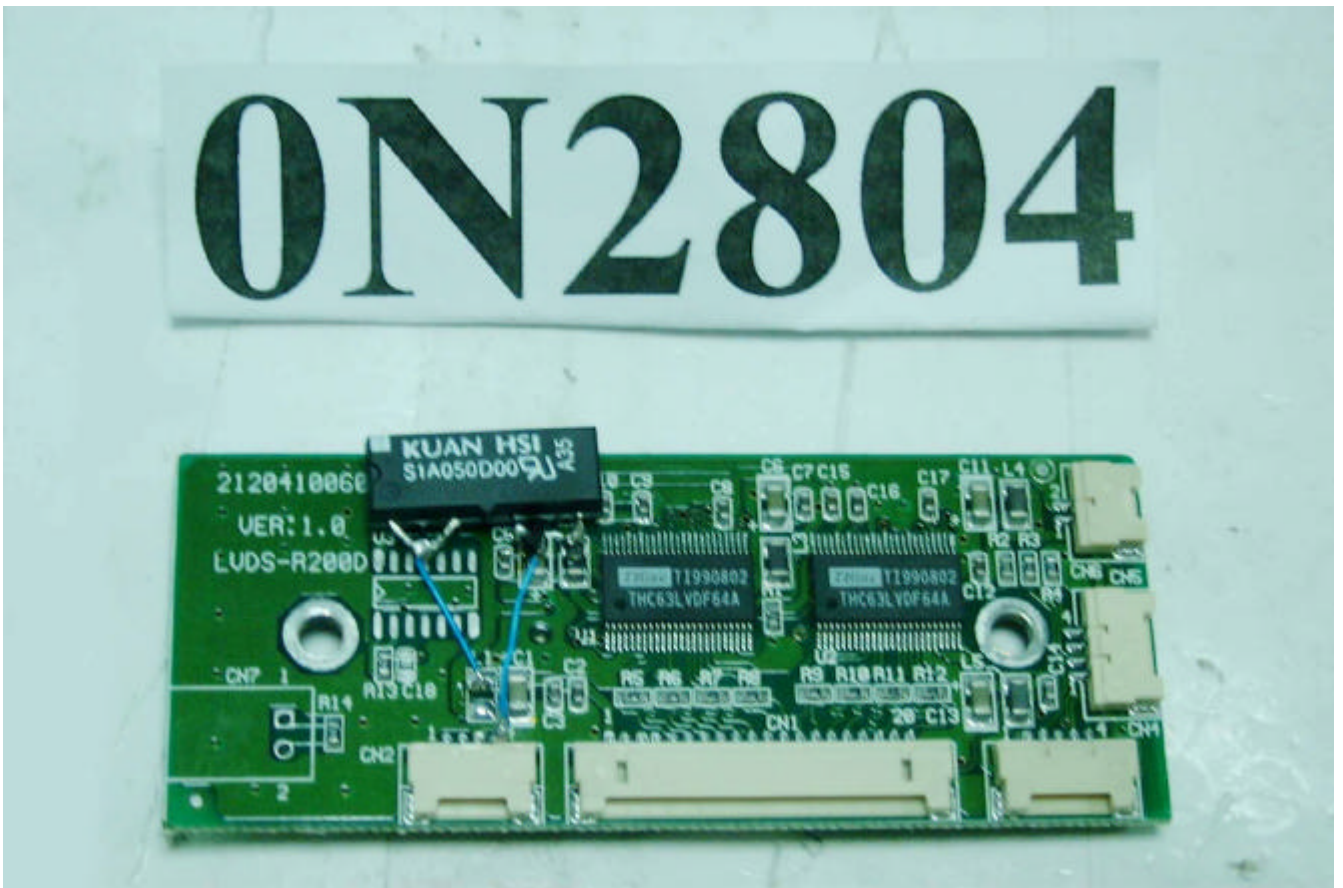
0N2804



0N2804-25.jpg



0N2804-26.jpg



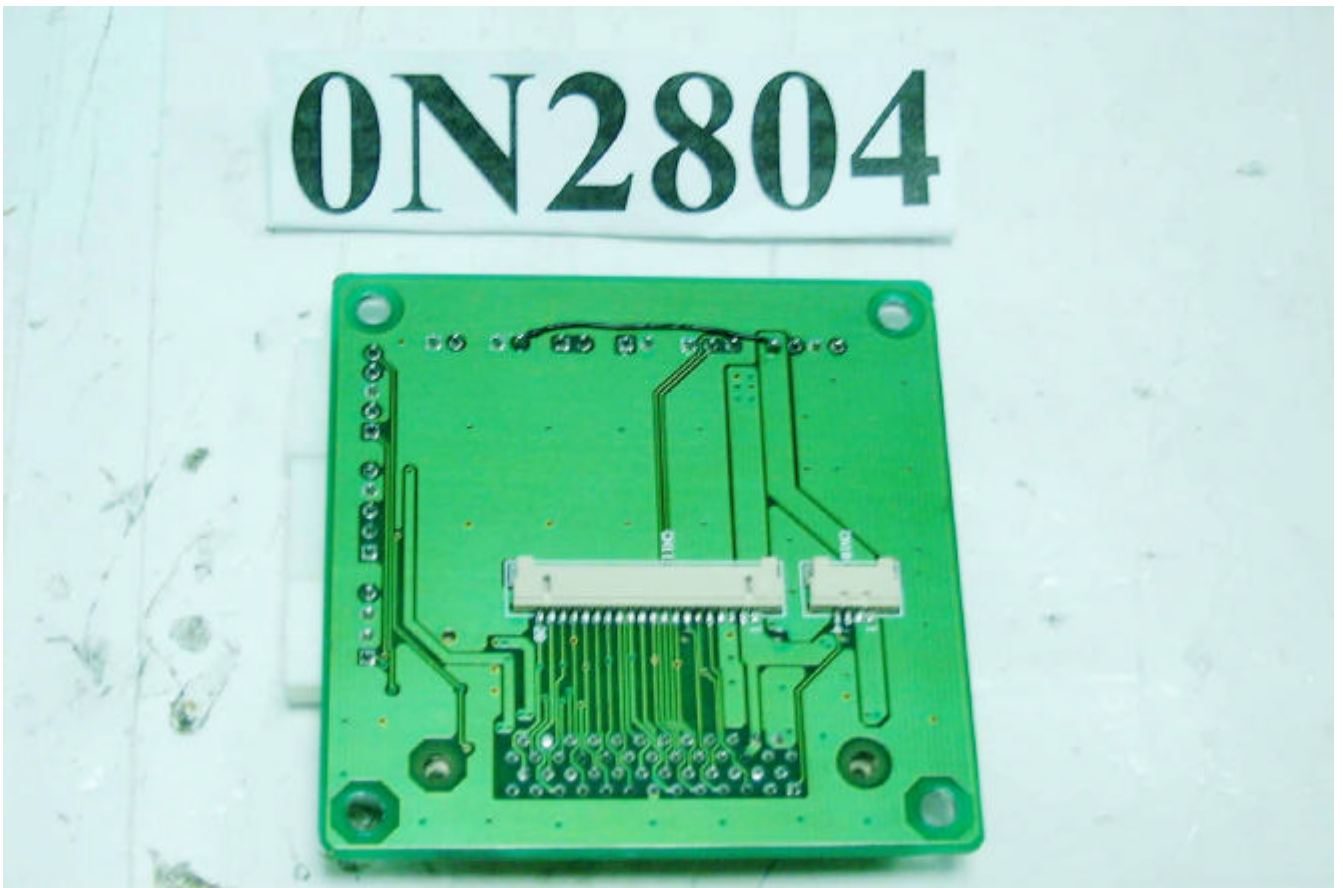
0N2804-27.jpg



0N2804-28.jpg



0N2804-29.jpg



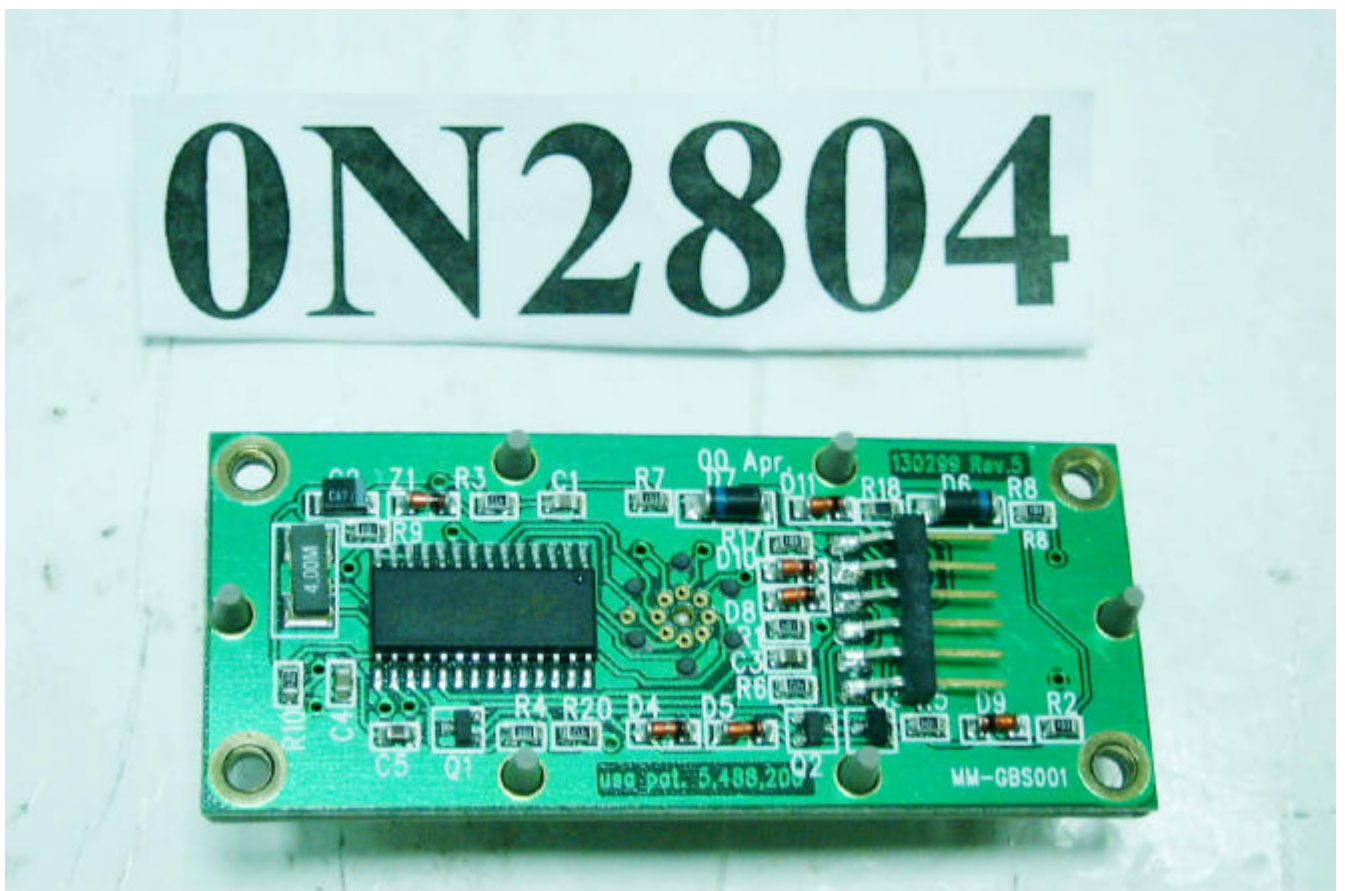
0N2804-30.jpg



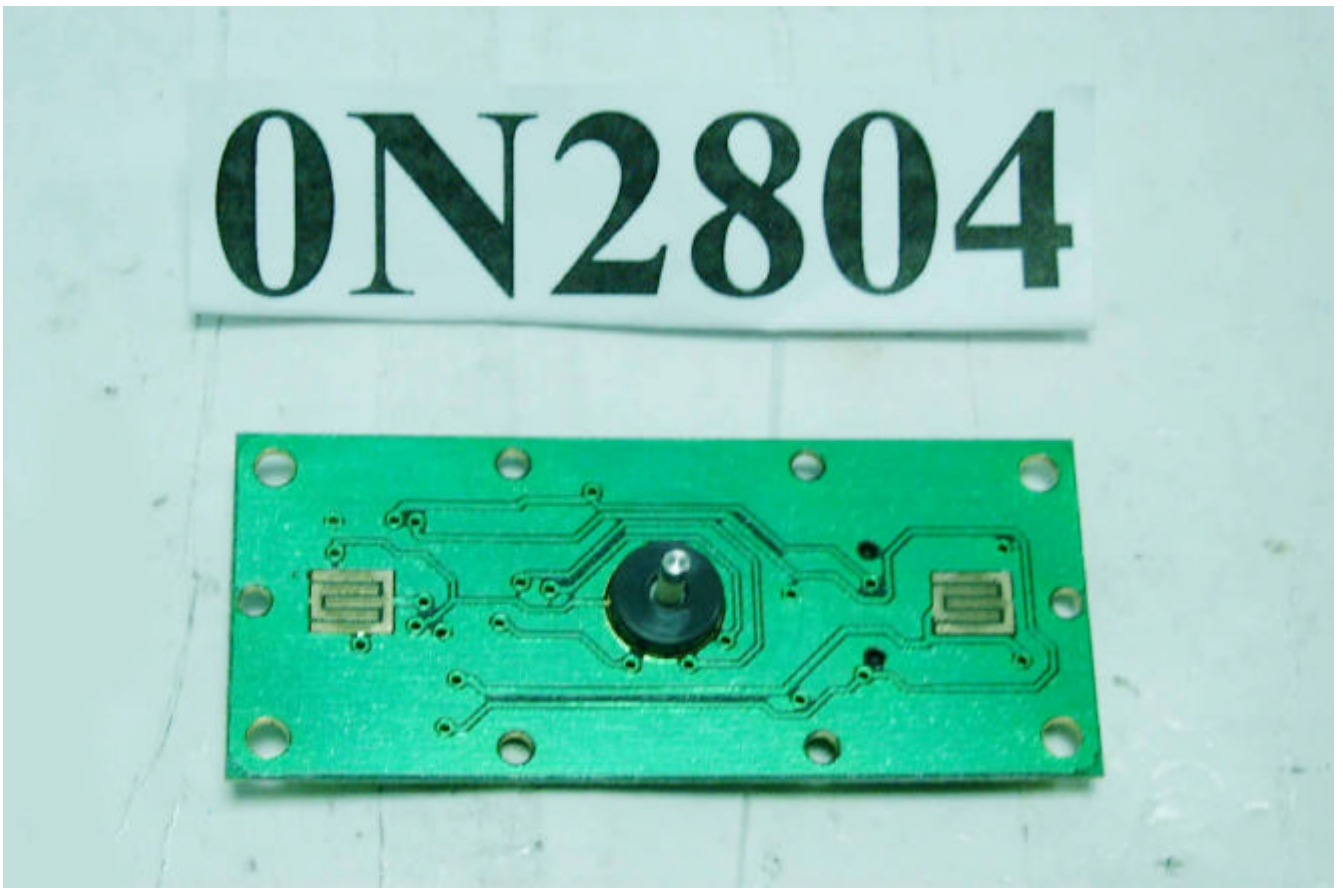
0N2804-31.jpg



0N2804-32.jpg



0N2804-33.jpg

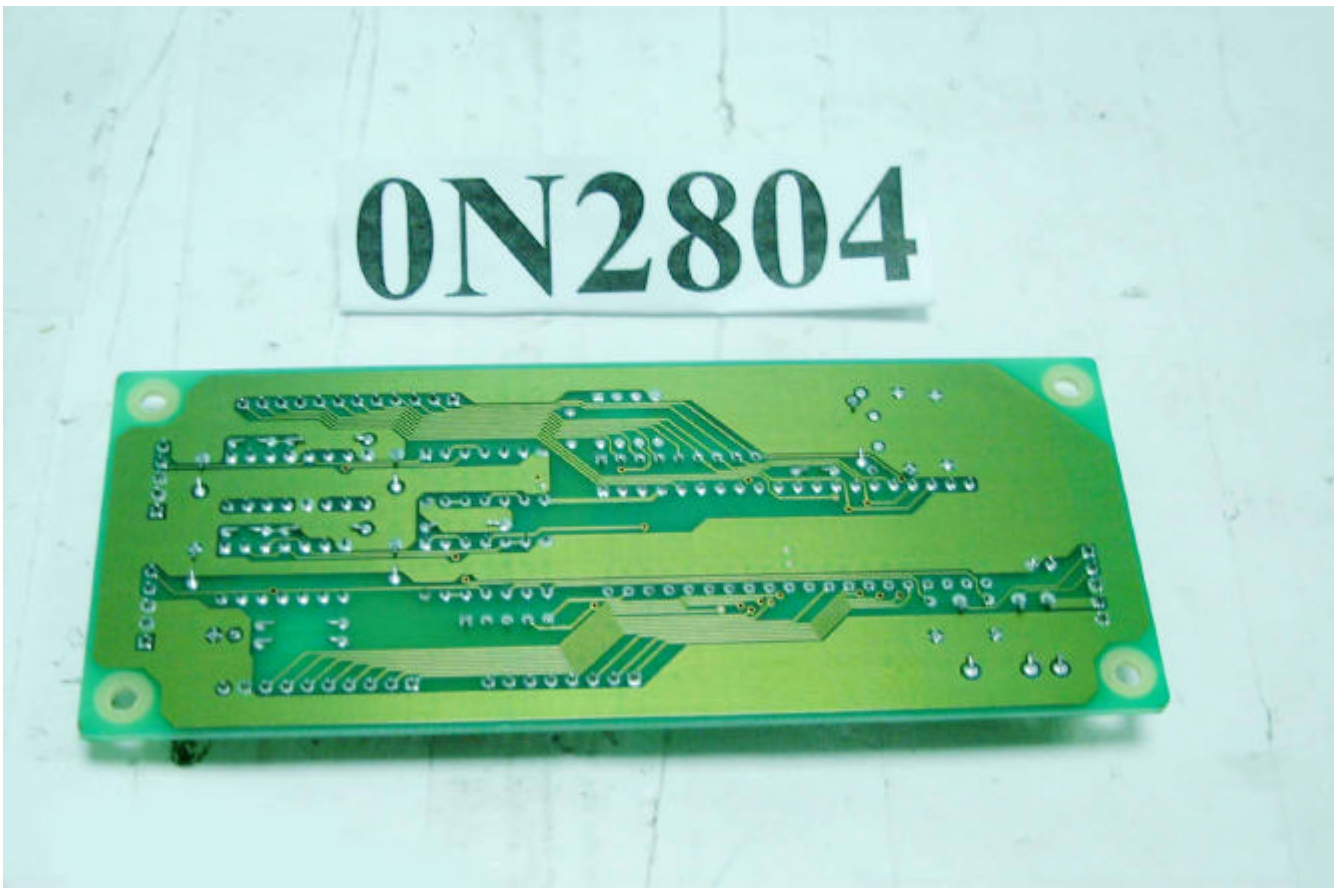


0N2804-34.jpg

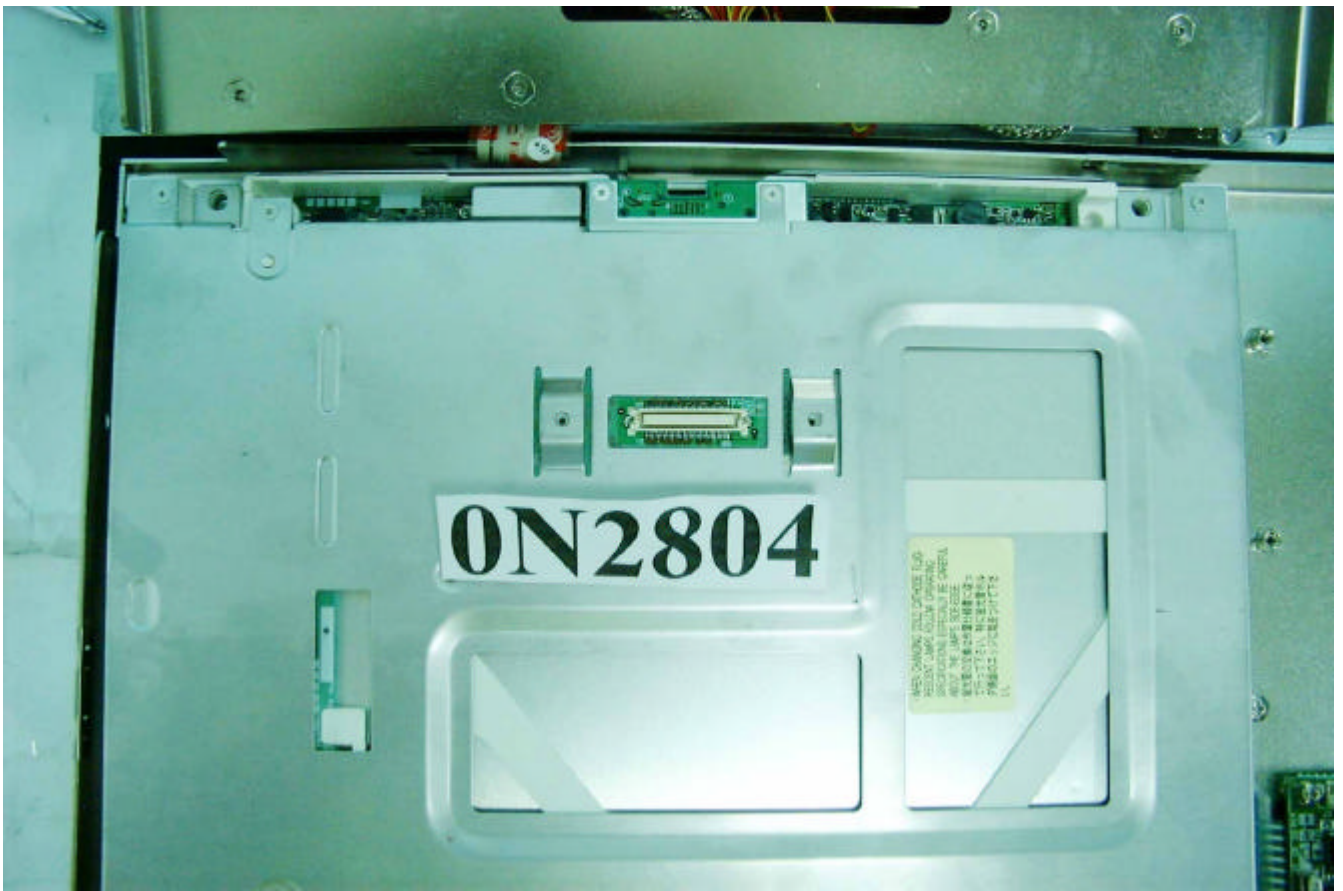
0N2804



0N2804-35.jpg



0N2804-36.jpg



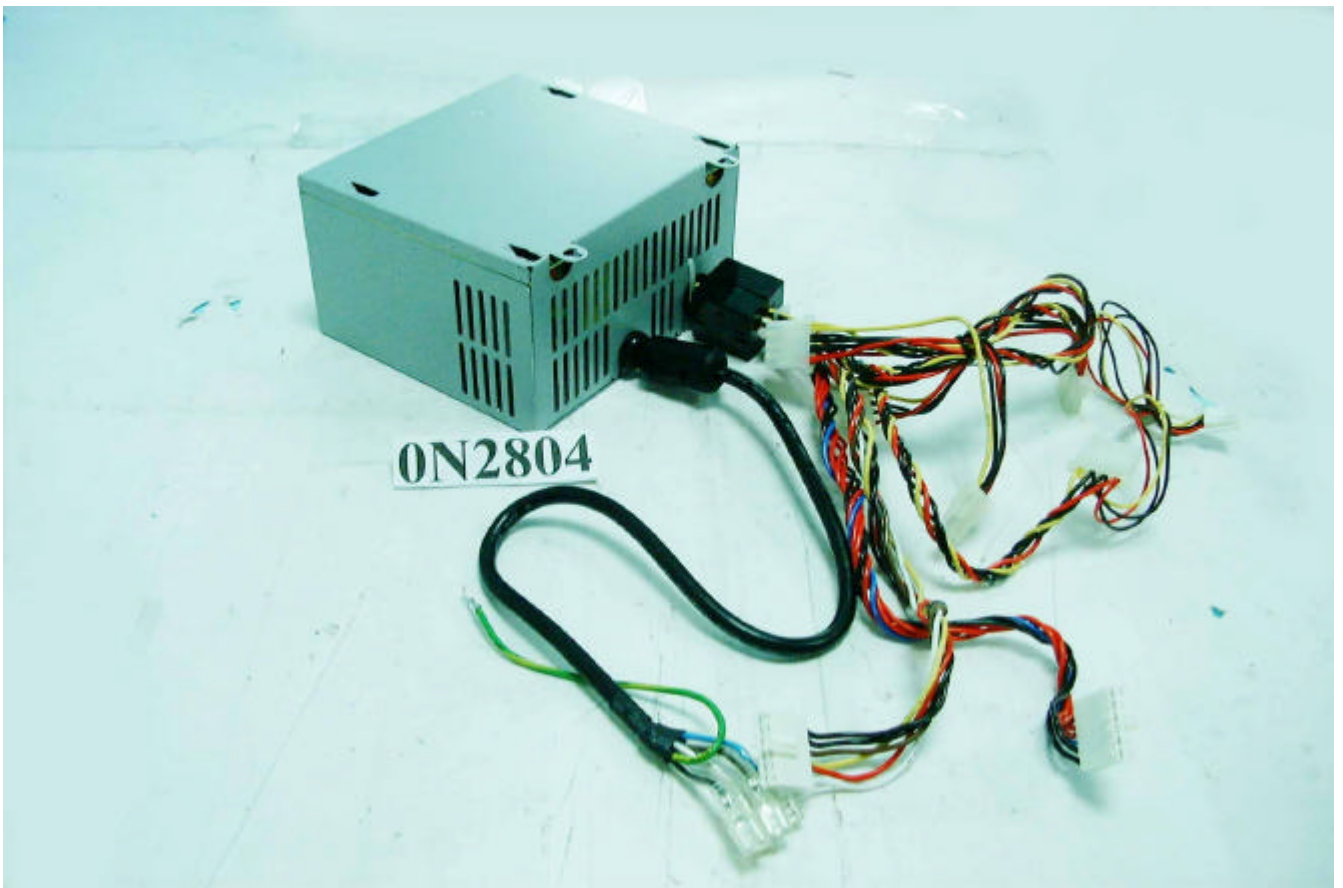
0N2804-37.jpg



ON2804-38.jpg



0N2804-39.jpg



0N2804-40.jpg