

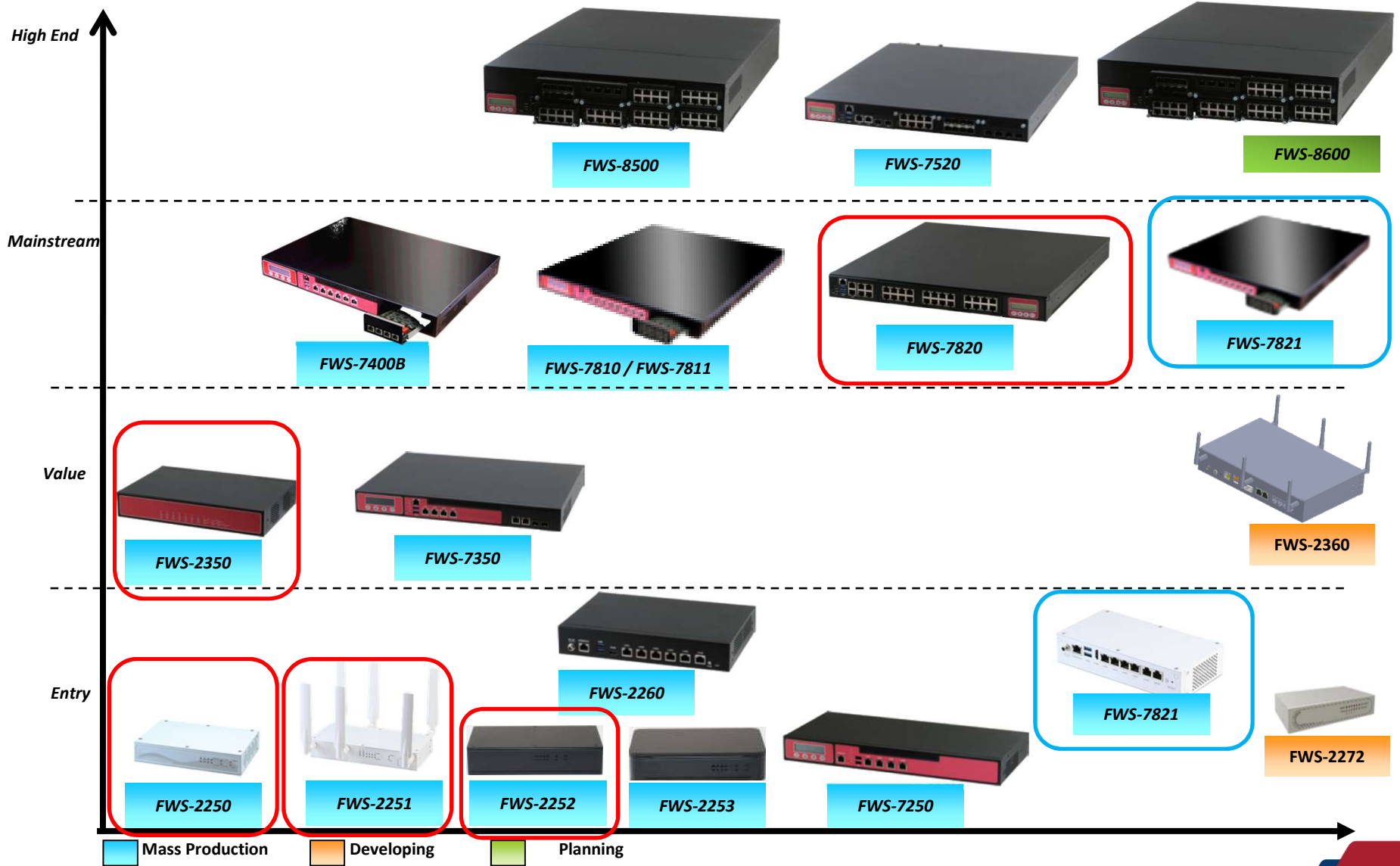


AAEON NSD Updates

FWS-2271 and FWS-7821

Marlo Banganga
Senior BDM
NSD Europe

Network Appliances Portfolio



FWS-2271 - Features

6 x 1 GbE
LAN Ports



ADVANCED ENCRYPTION STANDARD
NEW INSTRUCTIONS
(AES-NI)



2 x Mini
PCIe Slots

2 x SIM
Sockets



2 Pairs Bypass



CF
CFast

1 x 2.5"
HDD/SSD

Front &
Rear LAN
LED's



FWS-2271 - Applications



FWS-7821 - Features

8 x Copper or
6 x Copper + 2 Fiber

Up to 64GB DDR4 ECC
Memory

Configurable Storage:
- CF/Cfast/mSATA
- Up to 5 x 2.5"
HDD/SSD Internal
- Can Support 2 x
Removable
HDD/SSD bay in
front.

1 x NIM slot
1/2 x Rear Expansion

Support 2 pairs Bypass

TPM



Network Interface Modules



1 GbE Copper



1 GbE SFP



1 GbE SFP

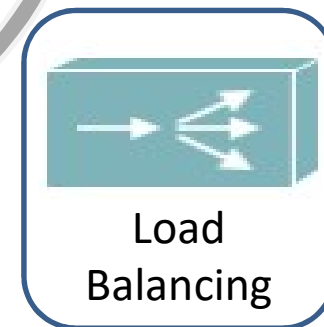
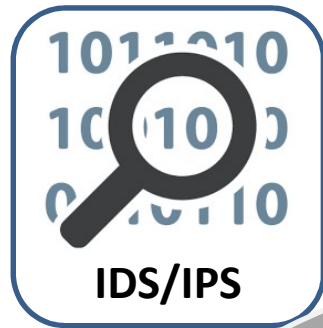


10 GbE SFP+



40 GbE QSFP

FWS-7821 Applications



SDK Services

Status LED Control

- LED Off
- Bi-color : Red / Green (Solid)
- Red Blinking (Slowly/Quickly)
- Green Blinking (Slowly/Quickly)

Software Program Button

- Get Register while Pin Level High/Low



NIM Recognition

- Get PCIe Slots Configuration Information
- Get Network Interface Modular Device Information

LAN ByPass I/O control

- Power On/Off ByPass Control
- WDT Timeout Mode Control
- BIOS Control and AP Layer Write through BIOS

LCM Control

- Get LCM Button Key
- LCM LCD On/Off
- Setting String on LCM

Use Cases

NGFW



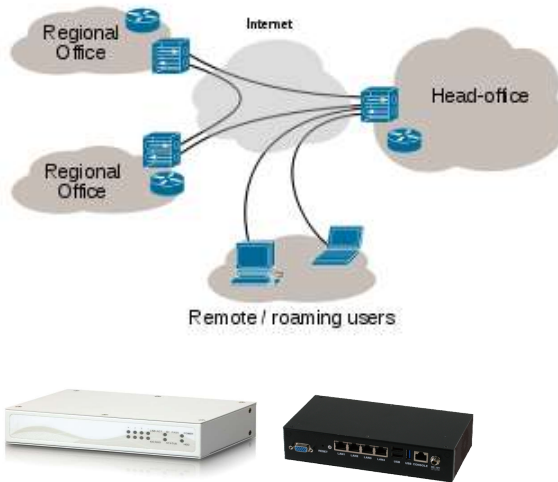
WAC



UTM



VPN



SD-WAN



Machine Vision

