

UP-CHT01

Maker Board

User's Manual 4th Ed

Copyright Notice

This document is copyrighted, 2022. All rights are reserved. The original manufacturer reserves the right to make improvements to the products described in this manual at any time without notice.

No part of this manual may be reproduced, copied, translated, or transmitted in any form or by any means without the prior written permission of the original manufacturer. Information provided in this manual is intended to be accurate and reliable. However, the original manufacturer assumes no responsibility for its use, or for any infringements upon the rights of third parties that may result from its use.

The material in this document is for product information only and is subject to change without notice. While reasonable efforts have been made in the preparation of this document to assure its accuracy, AAEMON assumes no liabilities resulting from errors or omissions in this document, or from the use of the information contained herein.

AAEMON reserves the right to make changes in the product design without notice to its users.

Acknowledgement

All other products' name or trademarks are properties of their respective owners.

- Microsoft Windows® is a registered trademark of Microsoft Corp.
- Intel® Celeron®, Pentium®, Atom®, and Xeon® are registered trademarks of Intel Corporation
- Intel® Core™ is a trademark of Intel Corporation
- ITE is a trademark of Integrated Technology Express, Inc.
- IBM, PC/AT, PS/2, and VGA are trademarks of International Business Machines Corporation.

All other product names or trademarks are properties of their respective owners.

Packing List

Before setting up your product, please make sure the following items have been shipped:

Item	Quantity
● UP-CHT01	1

If any of these items are missing or damaged, please contact your distributor or sales representative immediately.

About this Document

This User's Manual contains all the essential information, such as detailed descriptions and explanations on the product's hardware and software features (if any), its specifications, dimensions, jumper/connector settings/definitions, and driver installation instructions (if any), to facilitate users in setting up their product.

Users may refer to the product page on AAEON.com for the latest version of this document.

Safety Precautions

Please read the following safety instructions carefully. It is advised that you keep this manual for future references

1. All cautions and warnings on the device should be noted.
2. Make sure the power source matches the power rating of the device.
3. Position the power cord so that people cannot step on it. Do not place anything over the power cord.
4. Always completely disconnect the power before working on the system's hardware.
5. No connections should be made when the system is powered as a sudden rush of power may damage sensitive electronic components.
6. If the device is not to be used for a long time, disconnect it from the power supply to avoid damage by transient over-voltage.
7. Always disconnect this device from any AC supply before cleaning.
8. While cleaning, use a damp cloth instead of liquid or spray detergents.
9. Make sure the device is installed near a power outlet and is easily accessible.
10. Keep this device away from humidity.
11. Place the device on a solid surface during installation to prevent falls
12. Do not cover the openings on the device to ensure optimal heat dissipation.
13. Watch out for high temperatures when the system is running.
14. Do not touch the heat sink or heat spreader when the system is running
15. Never pour any liquid into the openings. This could cause fire or electric shock.
16. As most electronic components are sensitive to static electrical charge, be sure to ground yourself to prevent static charge when installing the internal components. Use a grounding wrist strap and contain all electronic components in any static-shielded containers.

17. If any of the following situations arises, please contact our service personnel:
 - i. Damaged power cord or plug
 - ii. Liquid intrusion to the device
 - iii. Exposure to moisture
 - iv. Device is not working as expected or in a manner as described in this manual
 - v. The device is dropped or damaged
 - vi. Any obvious signs of damage displayed on the device
18. **DO NOT LEAVE THIS DEVICE IN AN UNCONTROLLED ENVIRONMENT WITH TEMPERATURES BEYOND THE DEVICE'S PERMITTED STORAGE TEMPERATURES (SEE CHAPTER 1) TO PREVENT DAMAGE.**

Warning!



This device complies with Part 15 FCC Rules. Operation is subject to the following two conditions: (1) this device may not cause harmful interference, and (2) this device must accept any interference received including interference that may cause undesired operation.

Caution:

There is a danger of explosion if the battery is incorrectly replaced. Replace only with the same or equivalent type recommended by the manufacturer. Dispose of used batteries according to the manufacturer's instructions and your local government's recycling or disposal directives.

Attention:

Il y a un risque d'explosion si la batterie est remplacée de façon incorrecte. Ne la remplacer qu'avec le même modèle ou équivalent recommandé par le constructeur. Recycler les batteries usées en accord avec les instructions du fabricant et les directives gouvernementales de recyclage.

China RoHS Requirements (CN)

产品中有毒有害物质或元素名称及含量

AAEON Main Board/ Daughter Board/ Backplane

部件名称	有毒有害物质或元素					
	铅 (Pb)	汞 (Hg)	镉 (Cd)	六价铬 (Cr(VI))	多溴联苯 (PBB)	多溴二苯醚 (PBDE)
印刷电路板 及其电子组件	X	X	○	○	○	○
外部信号 连接器及线材	X	X	○	○	○	○

○: 表示该有毒有害物质在该部件所有均质材料中的含量均在 SJ/T 11363-2006 标准规定的限量要求以下。

X: 表示该有毒有害物质至少在该部件的某一均质材料中的含量超出 SJ/T 11363-2006 标准规定的限量要求。

备注: 此产品所标示之环保使用期限, 系指在一般正常使用状况下。

China RoHS Requirement (EN)

Poisonous or Hazardous Substances or Elements in Products

AAEON Main Board/ Daughter Board/ Backplane

Component	Poisonous or Hazardous Substances or Elements					
	Lead (Pb)	Mercury (Hg)	Cadmium (Cd)	Hexavalent Chromium (Cr(VI))	Polybrominated Biphenyls (PBB)	Polybrominated Diphenyl Ethers (PBDE)
PCB & Other Components	X	X	○	○	○	○
Wires & Connectors for External Connections	X	X	○	○	○	○
<p>O: The quantity of poisonous or hazardous substances or elements found in each of the component's parts is below the SJ/T 11363-2006-stipulated requirement.</p> <p>X: The quantity of poisonous or hazardous substances or elements found in at least one of the component's parts is beyond the SJ/T 11363-2006-stipulated requirement.</p> <p>Note: The Environment Friendly Use Period as labeled on this product is applicable under normal usage only</p>						

Table of Contents

Chapter 1 - Product Specifications	1
1.1 Specifications	2
Chapter 2 – Hardware Information	4
2.1 Dimensions	5
2.2 Jumpers and Connectors.....	6
2.3 List of Switches and Connectors.....	7
2.3.1 Power Button (SW1).....	8
2.3.2 RTC Battery Wafer (CN1)	8
2.3.3 USB 3.0 Micro Connector (CN6).....	8
2.3.4 USB 2.0 x 10P Wafer (CN7)	9
2.3.5 Dual USB Type A Connector 1 (CN8)	10
2.3.6 Dual USB Type A Connector 2 (CN9)	10
2.3.7 RJ-45 LAN Connector (CN10)	11
2.3.8 HDMI Connector (CN11).....	11
2.3.9 HAT 40 GPIO Connector (CN12).....	12
2.3.10 Reset Pin Header (CN14).....	13
2.3.11 DC Jack (CN30)	13
2.3.12 MIPI DSI/eDP Connector (CN31)	14
2.3.13 MIPI CSI Connector (CN32).....	15
2.3.14 Power Button Wafer (CN33).....	15
2.3.15 Update CPLD Header (CN34)	16
Chapter 3 – Drivers Installation	17
3.1 Driver Download and Installation.....	18

Chapter 1

Product Specifications

1.1 Specifications

System

Form Factor	3.34" x 2.20" (85mm x 56mm)
CPU	Intel® Atom™ x5-Z8350 Processor
CPU Frequency	Up to 1.84GHz
Chipset	Processor Integrated
Memory Type	Onboard DDR3L-1600
Max Memory Capacity	4GB
BIOS	SPI BIOS – 64Mb flash
Power Requirement	5V3A or 5V4A
Power Supply Type	DC-In
Power Consumption (Typical)	<6W (SoC SDP <2W)
Dimensions (L x W)	3.34" x 2.20" (85mm x 56mm)
Operating Temperature	32 ~ 140°F (0 ~ 60°C)
Operation Humidity	10 ~ 80% relative humidity, non-condensing
Certification	CE/FCC Class A

Display

VGA/LCD Controller	Intel® HD Graphics
--------------------	--------------------

I/O

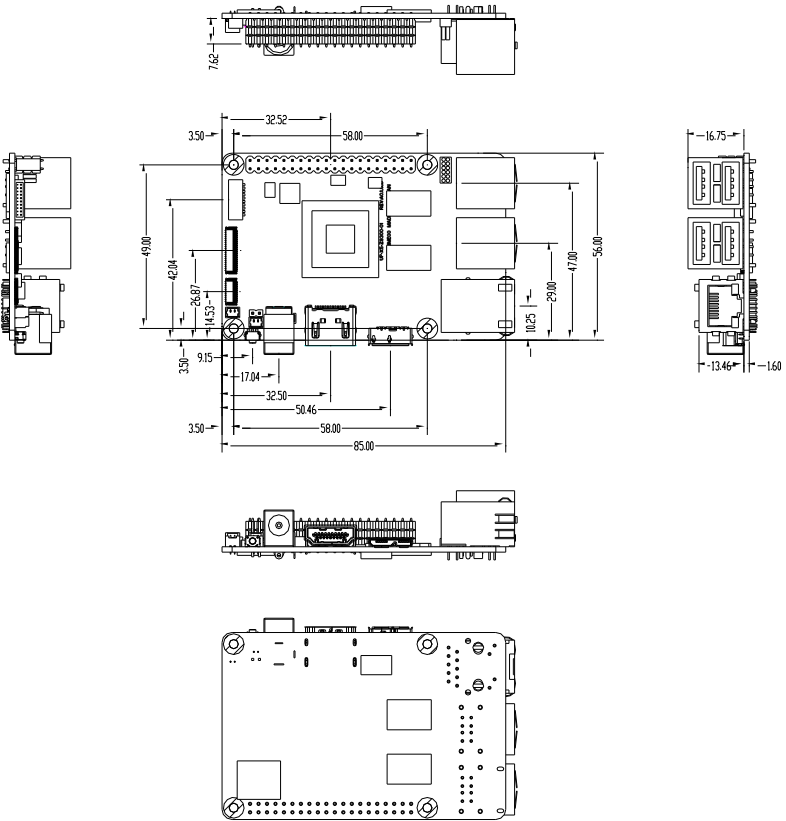
Ethernet	RTL8111H-CG
Audio	HDMI I2S
USB	USB 2.0 x 4 USB 3.0 x 1 (MicroUSB Type B, supports USB 3.0 OTG)
Onboard eMMC	16 GB / 32 GB / 64 GB
Expansion Slot	HAT 40 GPIO PIN for: Serial Port x 1 DIO 28-pin x 1 I2C x 2 SPI x 2 I2S x 1 ADC x 1 PWM x 2

Chapter 2

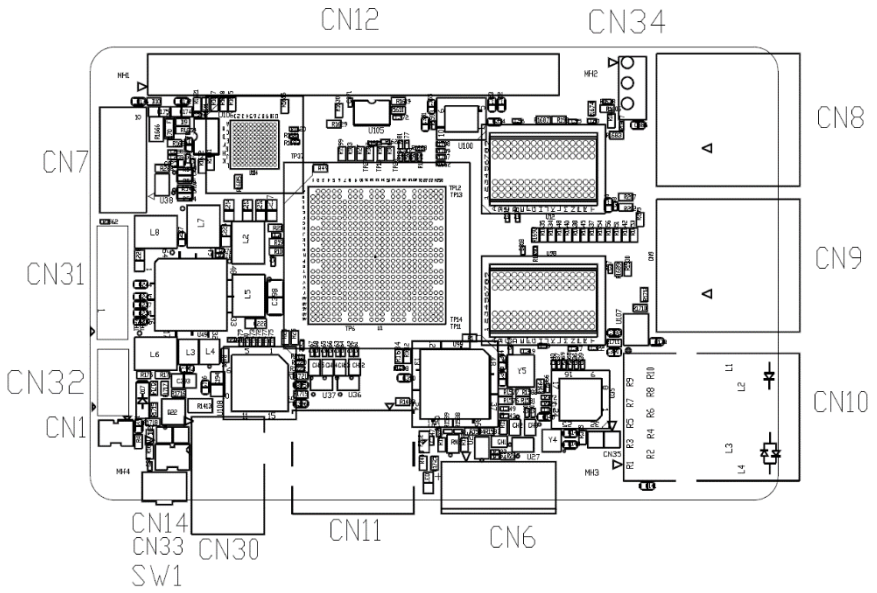
Hardware Information

2.1 Dimensions

Component Side



2.2 Jumpers and Connectors

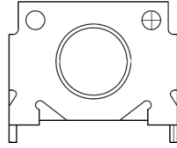


2.3 List of Switches and Connectors

Please refer to the table below for all of the board's jumpers that you can configure for your application

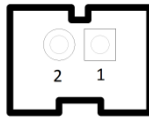
Label	Function
SW1	Power Button
CN1	RTC Battery
CN6	USB 3.0 Micro Connector
CN7	USB 2.0 1x10P Wafer
CN8	USB Type A Connector 1
CN9	USB Type A Connector 2
CN10	RJ45 LAN Connector
CN11	HDMI Connector
CN12	HAT 40 GPIO Connector
CN14	Reset Pin Header
CN30	DC Jack
CN31	MIPI DSI/eDP Connector
CN32	MIPI CSI Connector
CN33	Power Button Wafer
CN34	Update CPLD Header

2.3.1 Power Button (SW1)



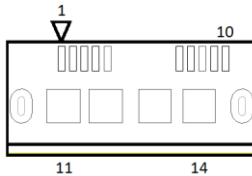
Position	Function
SW1 1	Power off (default)
SW1 0	Power on

2.3.2 RTC Battery Wafer (CN1)



Pin	Signal
1	+V_COIN_BAT
2	GND

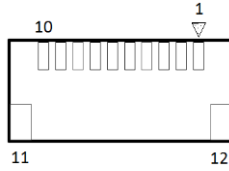
2.3.3 USB 3.0 Micro Connector (CN6)



Pin	Signal	Pin	Signal
1	USB_VCC	8	GND
2	USB2_D-	9	CROSSBAR_TX1_N
3	USB2_D+	10	CROSSBAR_TX1_P
4	USB2_ID	11	GND

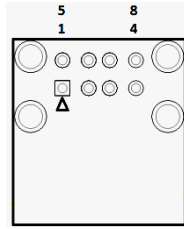
Pin	Signal	Pin	Signal
5	GND	12	GND
6	CROSSBAR_RX1_N	13	GND
7	CROSSBAR_RX1_P	14	GND

2.3.4 USB 2.0 x 10P Wafer (CN7)



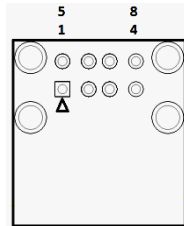
Pin	Signal	Pin	Signal
1	USB_VCC	7	USB_HSIC_P4_D+
2	USB_HSIC_P3_D-	8	GND
3	USB_HSIC_P3_D+	9	UART0_RXD
4	GND	10	UART0_TXD
5	USB_VCC	11	GND
6	USB_HSIC_P4_D-	12	GND

2.3.5 Dual USB Type A Connector 1 (CN8)



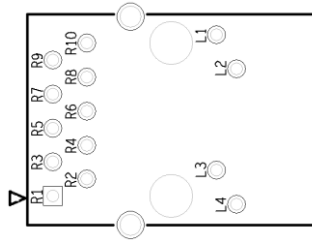
Pin	Signal	Pin	Signal
1	USB_VCC	5	USB_VCC
2	USB2_P1_D-	6	USB2_P2_D-
3	USB2_P1_D+	7	USB2_P2_D+
4	GND	8	GND

2.3.6 Dual USB Type A Connector 2 (CN9)



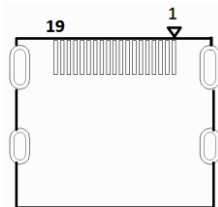
Pin	Signal	Pin	Signal
1	USB_VCC	5	USB_VCC
2	USB2_P3_D-	6	USB_HSIC_P2_D-
3	USB2_P3_D+	7	USB_HSIC_P2_D+
4	GND	8	GND

2.3.7 RJ-45 LAN Connector (CN10)



Pin	Signal	Pin	Signal
R1	LAN1_MDI0+	R8	LAN1_MDI2-
R2	LAN1_MDI0-	R9	LAN1_MDI3+
R3	LAN1_MDI1+	R10	LAN1_MDI3-
R4	LAN1_MDI1-	L1	LAN_ACTLEDP
R5	Center Tap	L2	LAN_ACTLEDN
R6	Center Tap	L3	LAN_LINK100#
R7	LAN1_MDI2+	L4	LAN_LINK1000#

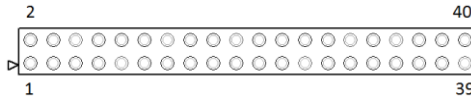
2.3.8 HDMI Connector (CN11)



Pin	Signal	Pin	Signal
1	DDI2_TX0_HDMI_DP+	11	GND
2	GND	12	DDI2_CLK_HDMI_DN-
3	DDI2_TX0_HDMI_DN-	13	HDMI_CEC_D
4	DDI2_TX1_HDMI_DP+	14	NC

Pin	Signal	Pin	Signal
5	GND	15	DDI2_DDC_CLK
6	DDI2_TX1_HDMI_DN-	16	DDI2_DDC_DAT
7	DDI2_TX2_HDMI_DP+	17	GND
8	GND	18	+5V_HDMI
9	DDI2_TX2_HDMI_DN-	19	DDI2_TYPE_C_HPDP
10	DDI2_CLK_HDMI_DP+		

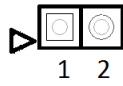
2.3.9 HAT 40 GPIO Connector (CN12)



Pin	Signal	Pin	Signal
1	3V3	2	5V
3	GPIO0/I2C1_SDA	4	5V
5	GPIO1/I2C1_SCL	6	GND
7	GPIO2/ADC-input	8	GPIO15/UART_TX
9	GND	10	GPIO16/UART_RX
11	GPIO3	12	GPIO17/I2S_CLK
13	GPIO4	14	GND
15	GPIO5	16	GPIO18
17	3V3	18	GPIO19
19	GPIO6/SPI_MOSI	20	GND
21	GPIO7/SPI_MISO	22	GPIO20
23	GPIO8/SPI_CLK	24	GPIO21/SPI_CS0N
25	GND	26	GPIO22/SPI_CS1N
27	GPIO9/I2C0_SDA	28	GPIO23/I2C0_SCL
29	GPIO10	30	GND

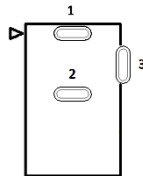
Pin	Signal	Pin	Signal
31	GPIO11	32	GPIO24/PWM0
33	GPIO12/PWM1	34	GND
35	GPIO13/I2S_FRM	36	GPIO25
37	GPIO14	38	GPIO26/I2S_DATAIN
39	GND	40	GPIO27/I2S_DATAOUT

2.3.10 Reset Pin Header (CN14)



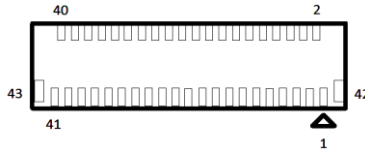
Pin	Signal
1	PMU_RSTBTN_N
2	GND

2.3.11 DC Jack (CN30)



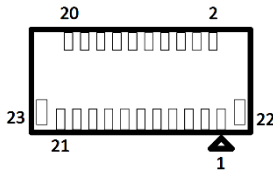
Pin	Signal
1	+V5
2	GND
3	GND

2.3.12 MIPI DSI/eDP Connector (CN31)



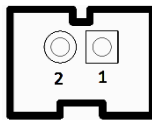
Pin	Signal	Pin	Signal	Pin	Signal
1	MDSI_A_DATA1_DN	16	DDI0_TX0_DP	31	DDI0_HPD_CONN
2	MDSI_A_DATA1_DP	17	DDI0_TX0_DN	32	DDI0_BKLT_R_CTRL
3	GND	18	GND	33	DDI0_VDD_EN
4	MDSI_A_CLK_DN	19	DDI0_TX1_DP	34	DDI0_BKLT_EN
5	MDSI_A_CLK_DP	20	DDI0_TX1_DN	35	NC
6	GND	21	GND	36	NC
7	MDSI_A_DATA0_DN	22	DDI0_TX2_DP	37	+3.3V
8	MDSI_A_DATA0_DP	23	DDI0_TX2_DN	38	+3.3V
9	GND	24	GND	39	+3.3V
10	I2C2_3P3_SCL	25	DDI0_TX3_DP	40	+3.3V
11	I2C2_3P3_SDA	26	DDI0_TX3_DN	41	+3.3V
12	GND	27	GND	42	GND
13	DDI1_DDC_C_CLK	28	DDI0_AUX_DP	43	GND
14	DDI1_DDC_C_DAT	29	DDI0_AUX_DN		
15	GND	30	GND		

2.3.13 MIPI CSI Connector (CN32)



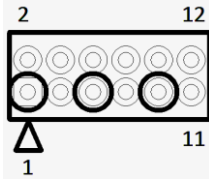
Pin	Signal	Pin	Signal
1	GND	13	GND
2	MCSI_1_DATA1_DN	14	CAM_MCLK
3	MCSI_1_DATA1_DP	15	GND
4	GND	16	I2C2_SOC_SCL
5	MCSI_1_CLK_DN	17	I2C2_SOC_SDA
6	MCSI_1_CLK_DP	18	CAM_RST_N
7	GND	19	FLASH_RESET_N
8	MCSI_1_DATA0_DN	20	+2.8V
9	MCSI_1_DATA0_DP	21	GND_CAM
10	GND	22	GND
11	+1.2V	23	GND
12	+1.8V		

2.3.14 Power Button Wafer (CN33)



Pin	Signal
1	PWR_SW#_CTL_R
2	GND

2.3.15 Update CPLD Header (CN34)



Pin	Signal	Pin	Signal
1	CHT_GPIO_TMS	2	CPLD_TMS
3	CHT_GPIO_TDI	4	CPLD_TDI
5	CHT_GPIO_TCK	6	CPLD_TCK
7	CHT_GPIO_TDO	8	CPLD_TDO
9	FAN_PWM	10	+1.8V
11	+5V	12	GND

Chapter 3

Drivers Installation

3.1 Driver Download and Installation

You can download drivers for UP Board (UP-CHT01) by visiting <https://www.up-community.org> and going to the Downloads section to find the relevant driver(s).