

# UP Squared V2 Edge

---

Edge System  
UPS-EDGE-EHL01

User's Manual 1<sup>st</sup> Ed

## Copyright Notice

---

This document is copyrighted, 2022. All rights are reserved. The original manufacturer reserves the right to make improvements to the products described in this manual at any time without notice.

No part of this manual may be reproduced, copied, translated, or transmitted in any form or by any means without the prior written permission of the original manufacturer. Information provided in this manual is intended to be accurate and reliable. However, the original manufacturer assumes no responsibility for its use, or for any infringements upon the rights of third parties that may result from its use.

The material in this document is for product information only and is subject to change without notice. While reasonable efforts have been made in the preparation of this document to assure its accuracy, AAEMON assumes no liabilities resulting from errors or omissions in this document, or from the use of the information contained herein.

AAEMON reserves the right to make changes in the product design without notice to its users.

## Acknowledgement

---

All other products' name or trademarks are properties of their respective owners.

- Microsoft®, Windows® are registered trademarks of Microsoft Corp.
- Intel®, Pentium®, and Celeron® are registered trademarks of Intel Corporation
- Intel Atom™ is a trademark of Intel Corporation
- ITE is a trademark of Integrated Technology Express, Inc.

All other product names or trademarks are properties of their respective owners.

## Packing List

---

Before setting up your product, please make sure the following items have been shipped:

Item	Quantity
● UP Squared V2 Edge	1

If any of these items are missing or damaged, please contact your distributor or sales representative immediately.

## About this Document

---

This User's Manual contains all the essential information, such as detailed descriptions and explanations on the product's hardware and software features (if any), its specifications, dimensions, jumper/connector settings/definitions, and driver installation instructions (if any), to facilitate users in setting up their product.

Users may refer to the product page at [AAEON.com](http://AAEON.com) for the latest version of this document.

## Safety Precautions

---

Please read the following safety instructions carefully. It is advised that you keep this manual for future references

1. All cautions and warnings on the device should be noted.
2. Make sure the power source matches the power rating of the device.
3. Position the power cord so that people cannot step on it. Do not place anything over the power cord.
4. Always completely disconnect the power before working on the system's hardware.
5. No connections should be made when the system is powered as a sudden rush of power may damage sensitive electronic components.
6. If the device is not to be used for a long time, disconnect it from the power supply to avoid damage by transient over-voltage.
7. Always disconnect this device from any AC supply before cleaning.
8. While cleaning, use a damp cloth instead of liquid or spray detergents.
9. Make sure the device is installed near a power outlet and is easily accessible.
10. Keep this device away from humidity.
11. Place the device on a solid surface during installation to prevent falls
12. Do not cover the openings on the device to ensure optimal heat dissipation.
13. Watch out for high temperatures when the system is running.
14. Do not touch the heat sink or heat spreader when the system is running
15. Never pour any liquid into the openings. This could cause fire or electric shock.
16. As most electronic components are sensitive to static electrical charge, be sure to ground yourself to prevent static charge when installing the internal components. Use a grounding wrist strap and contain all electronic components in any static-shielded containers.

17. If any of the following situations arises, please the contact our service personnel:
  - i. Damaged power cord or plug
  - ii. Liquid intrusion to the device
  - iii. Exposure to moisture
  - iv. Device is not working as expected or in a manner as described in this manual
  - v. The device is dropped or damaged
  - vi. Any obvious signs of damage displayed on the device
18. **DO NOT LEAVE THIS DEVICE IN AN UNCONTROLLED ENVIRONMENT WITH TEMPERATURES BEYOND THE DEVICE'S PERMITTED STORAGE TEMPERATURES (SEE CHAPTER 1) TO PREVENT DAMAGE.**

## FCC Statement

---

### **Warning!**



This device complies with Part 15 FCC Rules. Operation is subject to the following two conditions: (1) this device may not cause harmful interference, and (2) this device must accept any interference received including interference that may cause undesired operation.

### **Caution:**

*There is a danger of explosion if the battery is incorrectly replaced. Replace only with the same or equivalent type recommended by the manufacturer. Dispose of used batteries according to the manufacturer's instructions and your local government's recycling or disposal directives.*

### **Attention:**

*Il y a un risque d'explosion si la batterie est remplacée de façon incorrecte. Ne la remplacer qu'avec le même modèle ou équivalent recommandé par le constructeur. Recycler les batteries usées en accord avec les instructions du fabricant et les directives gouvernementales de recyclage.*



## 产品中有毒有害物质或元素名称及含量

AAEON System

QO4-381 Rev.A0

部件名称	有毒有害物质或元素					
	铅 (Pb)	汞 (Hg)	镉 (Cd)	六价铬 (Cr(VI))	多溴联苯 (PBB)	多溴二苯醚 (PBDE)
印刷电路板 及其电子组件	×	○	○	○	○	○
外部信号 连接器及线材	×	○	○	○	○	○
外壳	○	○	○	○	○	○
中央处理器 与内存	×	○	○	○	○	○
硬盘	×	○	○	○	○	○
液晶模块	×	○	○	○	○	○
光驱	×	○	○	○	○	○
触控模块	×	○	○	○	○	○
电源	×	○	○	○	○	○
电池	×	○	○	○	○	○

本表格依据 SJ/T 11364 的规定编制。

○：表示该有毒有害物质在该部件所有均质材料中的含量均在 GB/T 26572 标准规定的限量要求以下。

×：表示该有害物质的某一均质材料超出了 GB/T 26572 的限量要求，然而该部件仍符合欧盟指令 2011/65/EU 的规范。

备注：

- 一、此产品所标示之环保使用期限，系指在一般正常使用状况下。
- 二、上述部件物质中央处理器、内存、硬盘、光驱、电源为选购品。
- 三、上述部件物质液晶模块、触控模块仅一体机产品适用。

**Hazardous and Toxic Materials List**

AAEON System

QO4-381 Rev.A0

Component Name	Hazardous or Toxic Materials or Elements					
	Lead (Pb)	Mercury (Hg)	Cadmium (Cd)	Hexavalent Chromium (Cr(VI))	Polybrominated biphenyls (PBBs)	Polybrominated ethers (PBDEs)
PCB and Components	X	O	O	O	O	O
Wires & Connectors for Ext.Connections	X	O	O	O	O	O
Chassis	O	O	O	O	O	O
CPU & RAM	X	O	O	O	O	O
HDD Drive	X	O	O	O	O	O
LCD Module	X	O	O	O	O	O
Optical Drive	X	O	O	O	O	O
Touch Control Module	X	O	O	O	O	O
PSU	X	O	O	O	O	O
Battery	X	O	O	O	O	O

This form is prepared in compliance with the provisions of SJ/T 11364.

O: The level of toxic or hazardous materials present in this component and its parts is below the limit specified by GB/T 26572.

X: The level of toxic of hazardous materials present in the component exceed the limits specified by GB/T 26572, but is still in compliance with EU Directive 2011/65/EU (RoHS 2).

Notes:

1. The Environment Friendly Use Period indicated by labelling on this product is applicable only to use under normal conditions.
2. Individual components including the CPU, RAM/memory, HDD, optical drive, and PSU are optional.
3. LCD Module and Touch Control Module only applies to certain products which feature these components.

# Table of Contents

---

<b>Chapter 1 - Product Specifications</b> .....	<b>1</b>
1.1 Specifications .....	2
<b>Chapter 2 – Hardware Information</b> .....	<b>4</b>
2.1 Dimensions .....	5
2.2 Jumpers and Connectors.....	6
2.3 List of Jumpers and Connectors.....	8
2.3.1 PWR Button (SW1) .....	9
2.3.2 BIOS Prog (CN1).....	9
2.3.3 Fan (CN19).....	10
2.3.4 USB Header (CN3).....	10
2.3.5 M.2 2280 M-Key (CN4).....	11
2.3.6 Power Input (CN6) .....	13
2.3.7 USB 3.0 (CN7).....	13
2.3.8 DP/HDMI (CN9) .....	14
2.3.9 M.2 2230 E-Key (CN10).....	15
2.3.10 RS-232/422 (CN11) .....	17
2.3.11 LAN (CN12) .....	18
2.3.12 USB 3.0 (CN13) .....	19
2.3.13 RTC (CN14) .....	20
2.3.14 SATA (CN15) .....	20
2.3.15 SATA Power (CN16).....	21
2.3.16 Front Panel (CN17) .....	21
2.3.17 Audio (CN18) .....	22
2.3.18 Auto-Power Button Selection (JP1).....	22
<b>Chapter 3 – Software Installation</b> .....	<b>23</b>
3.1 Linux Setup .....	24

3.2	Windows Drivers Installation .....	24
3.3	Unknown Device Troubleshooting .....	25
<b>Appendix A – UP Framework SDK Installation .....</b>		<b>27</b>
A.1	Introduction .....	28
A.2	Installation for Windows 10.....	28
A.3	Installation for Windows IoT Core.....	31
<b>Appendix B – Cables and Connectors .....</b>		<b>33</b>
B.1	Cables and Connectors.....	34

# Chapter 1

---

Product Specifications

## 1.1 Specifications

### System

CPU	Intel® Celeron® N6210 Pentium® J6426 Processor SoC
Memory	Up to 16GB LPDDR4
Graphics	Intel® UHD Graphics
Storage	Up to 64GB eMMC
Ethernet	Gigabit Ethernet (full speed) RJ-45 x 2
Expansion Slot	M.2 2230 E-Key x 1 (PCIe [x2], USB 2.0 x 1) M.2 2280 M-Key x 1 (PCIe [x2]) SATA III x 1
Security	Onboard TPM 2.0
OS Support	Microsoft Windows 10 (full) Windows IOT Core Ubuntu 20.04 LTS Yocto 3.1

### I/O Placements

USB	USB 2.0 x 2 (from 10 pin wafer x 1) USB 3.2 Gen 2 Type A x 3
Display Port	HDMI 1.4b x 1 DP 1.2 x 1
Ethernet	Gigabit Ethernet (full speed) RJ-45 x 2
COM	RS-232/422 x 1
Audio	Line out x 1 Mic in x 1

## Power Supply

Power requirement	12V DC-in, 5A
Power supply type	AT/ATX
Power Consumption (Typical)	30~38W

## Mechanical

Mounting	VESA Mounting
Dimensions (WxHxD)	3.74" x 3.74" x 2.16" (95mm x 95mm x 55mm)
Net Weight	0.99 lb. (0.45 Kg)
Gross Weight	1.32 lb. (0.6 Kg)

## Environmental

Operating Temperature	32°F ~ 140°F (0°C ~ 60°) / 0.5 airflow
Operating Humidity	0% ~ 90% relative humidity, non-condensing
Storage Temperature	-4°F ~ 158°F (-20°C ~ 70°C)
MTBF	465,586
Certification	CE/FCC Class A, RoHS Compliant, REACH

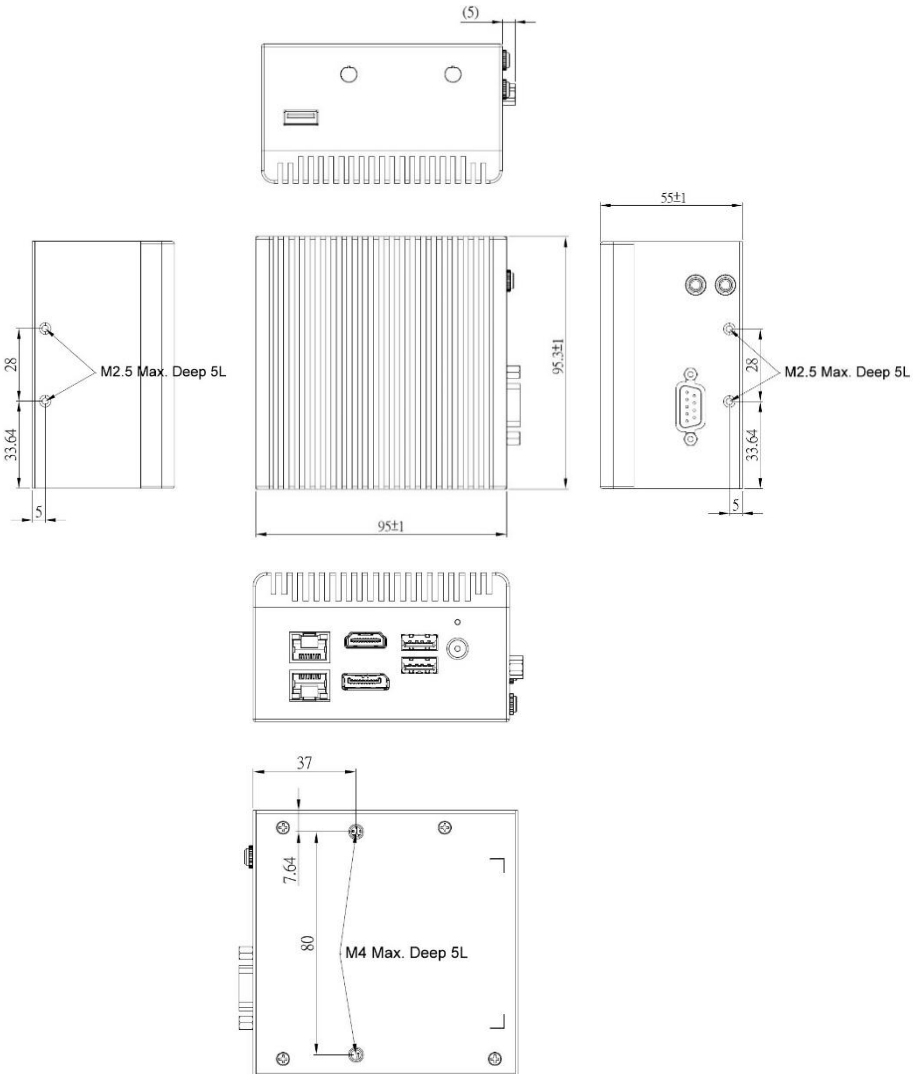
# Chapter 2

---

Hardware Information

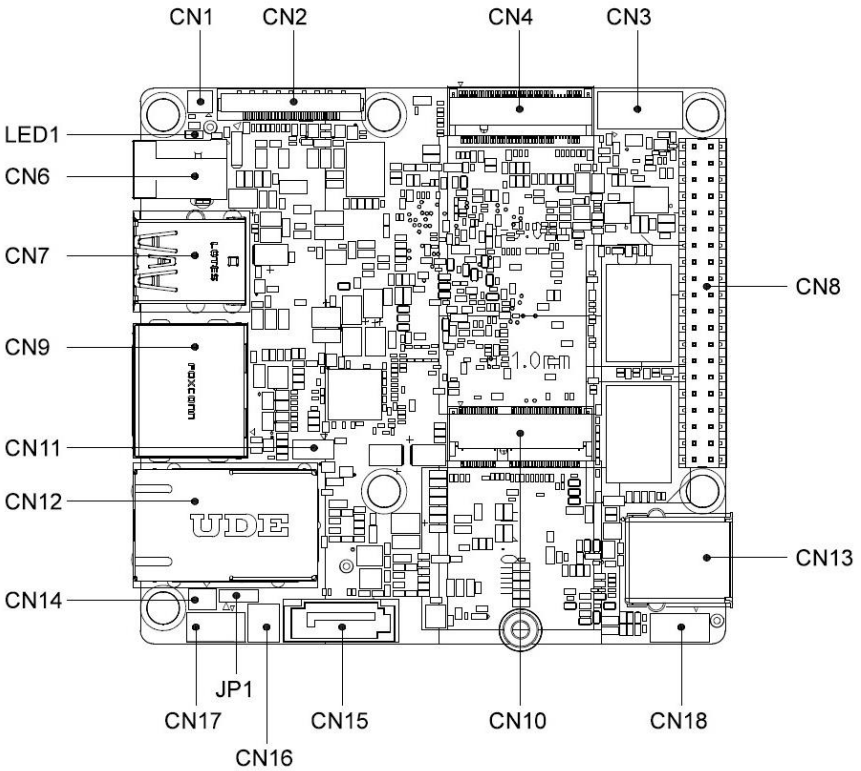


## 2.1 Dimensions



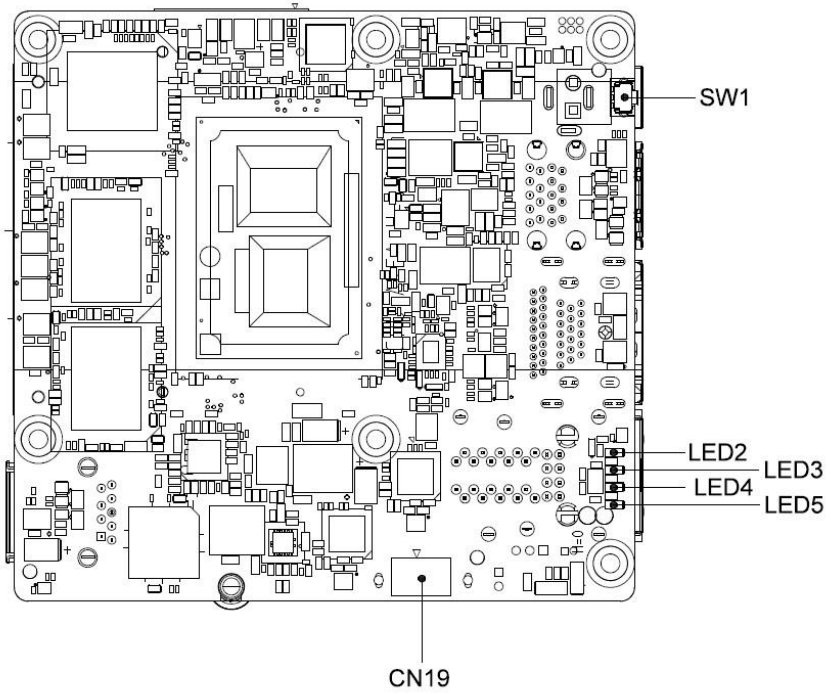
## 2.2 Jumpers and Connectors

Top:



**Note:** eDP (CN2) and 40-Pin HAT (CN8) connectors are only present at board-level (AAEON P/N: UPS-EHL01 - UP Squared V2), and are not part of the edge system I/O (AAEON P/N: UPS-EDGE-EHL01 - UP Squared V2 Edge).

Bottom:



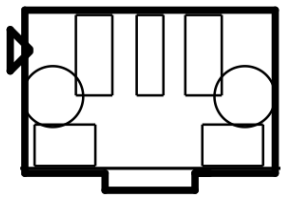
## 2.3 List of Jumpers and Connectors

Please refer to the table below for all of the board's connectors that you can configure for your application

Label	Function
SW1	PWR button
CN19	FAN
CN1	BIOS Prog
CN3	USB Header
CN4	M.2 2280 M-Key
CN6	Power Input
CN7	USB 3.0
CN9	DP/HDMI
CN10	M.2 2230 E-Key
CN11	RS232/RS422
CN12	LAN
CN13	USB 3.0
CN14	RTC
CN15	SATA
CN16	SATA PWR
CN17	Front Panel
CN18	Audio
LED1	PWR LED
LED2	LED2
LED3	LED3
LED4	LED4
LED5	LED5

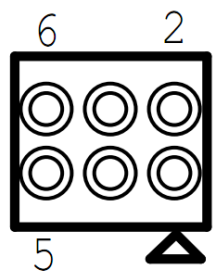
Label	Function
JP1	Auto-Power Button Selection

### 2.3.1 PWR Button (SW1)



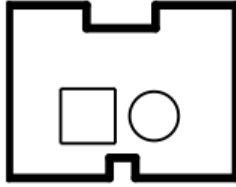
Pin	Signal	Pin	Signal	Pin	Signal
1	GND	2	PS_ON_SW	3	GND

### 2.3.2 BIOS Prog (CN1)



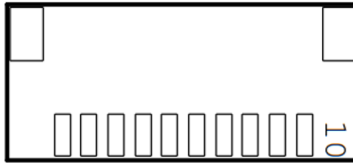
Pin	Signal	Pin	Signal
1	SPI_BIOS_MISO	2	SPI_BIOS_CLK
3	GND	4	SPI_BIOS_CS0#
5	+VCC_SPI	6	SPI_BIOS_MOSI

### 2.3.3 Fan (CN19)



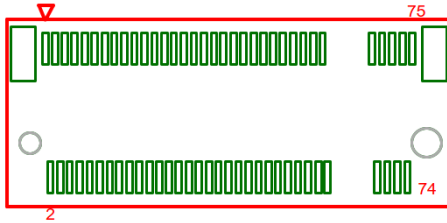
Pin	Signal	Pin	Signal
1	FAN_PWR (12V)	2	GND

### 2.3.4 USB Header (CN3)



Pin	Signal	Pin	Signal
1	+5V	2	USB2_DN6
3	USB2_DP6	4	GND
5	+5V	6	USB2_DN7
7	USB2_DP7	8	GND
9	UART1_RXD	10	UART1_TXD

### 2.3.5 M.2 2280 M-Key (CN4)

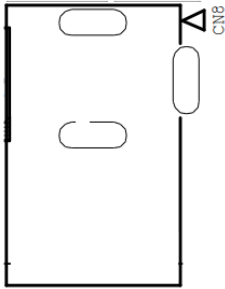


Pin	Signal	Pin	Signal
1	GND	2	+3.3V_NGFF
3	NC	4	+3.3V_NGFF
5	NC	6	+3.3V_NGFF
7	NC	8	NC
9	GND	10	NC
11	NC	12	+3.3V_NGFF
13	NC	14	+3.3V_NGFF
15	GND	16	+3.3V_NGFF
17	NC	18	+3.3V_NGFF
19	NC	20	NC
21	GND	22	NC
23	NC	24	NC
25	NC	26	NC
27	GND	28	NC
29	PCIE_P5_RX_DN	30	NC
31	PCIE_P5_RX_DP	32	NC
33	GND	34	NC
35	PCIE_P5_TX_DN	36	NC
37	PCIE_P5_TX_DP	38	GPPC_E_4_SATA_DEVSLP_0

Pin	Signal	Pin	Signal
39	GND	40	SMB_CLK_1V8
41	PCIE_P4_RX_DN	42	SMB_DATA_1V8
43	PCIE_P4_RX_DP	44	NC
45	GND	46	NC
47	PCIE_P4_TX_DN	48	NC
49	PCIE_P4_TX_DP	50	BUF_PLT_RST#
51	GND	52	NC
53	PCIE_CLK4_DN	54	WAKE_N
55	PCIE_CLK4_DP	56	NC
57	GND	58	NC
59	KEY	60	KEY
61	KEY	62	KEY
63	KEY	64	KEY
65	KEY	66	KEY
67	NC	68	SUS_CLK_CPU
69	NC	70	+3P3V_NGFF
71	GND	72	+3P3V_NGFF
73	GND	74	+3P3V_NGFF
75	GND	-	-

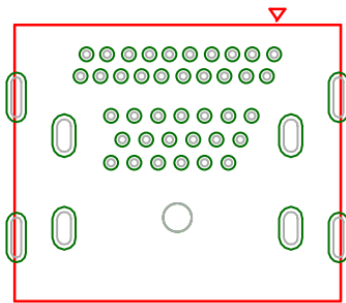


### 2.3.6 Power Input (CN6)



Pin	Signal	Pin	Signal	Pin	Signal
1	VCC_12V	2	GND	3	GND

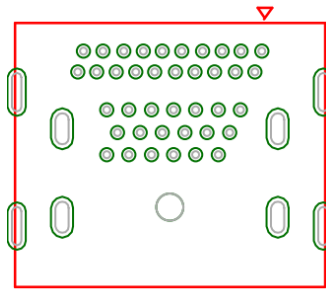
### 2.3.7 USB 3.0 (CN7)



Pin	Signal	Pin	Signal
1	+V5	2	USB2_ DN1
3	USB2_ DP1	4	GND
5	USB3_RXN_P1	6	USB3_RXP_P1
7	GND	8	USB3_TXN_P1

Pin	Signal	Pin	Signal
9	USB3_TXP_P1	10	+V5
11	USB2_DN2	12	USB2_DP2
13	GND	14	USB3_RXN_P2
15	USB3_RXP_P2	16	GND
17	USB3_TXN_P2	18	USB3_TXP_P2

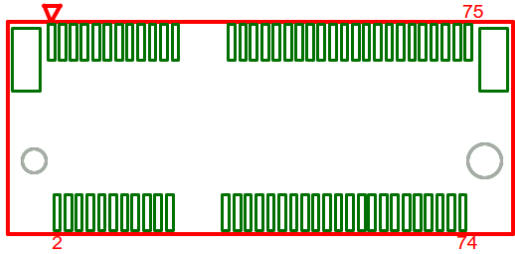
### 2.3.8 DP/HDMI (CN9)



Pin	Signal	Pin	Signal
1	TXP_DP_0	2	GND
3	TXN_DP_0	4	TXP_DP_1
5	GND	6	TXN_DP_1
7	TXP_DP_2	8	GND
9	TXN_DP_2	10	CLK_DP_D_P
11	GND	12	CLK_DP_D_N
13	GND	14	GND
15	AUX_P	16	GND
17	AUX_N	18	DP_HPD
19	GND	20	+3.3V
21	TXP_HDMI_0	22	GND

Pin	Signal	Pin	Signal
23	TXN_HDMI_0	24	TXP_HDMI_1
25	GND	26	TXN_HDMI_1
27	TXP_HDMI_2	28	GND
29	TXN_HDMI_2	30	CLK_HDMI_DP
31	GND	32	CLK_HDMI_DN
33	HDMI_CEC_O	34	NC
35	DDCCLK	36	DDCDATA
37	GND	38	5V
39	HDMI_HPD	-	-

### 2.3.9 M.2 2230 E-Key (CN10)

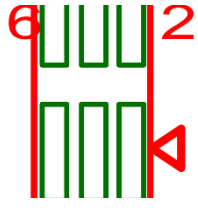


Pin	Signal	Pin	Signal
1	GND	2	+3P3VAUX_WIFI
3	USB2_P4_DP	4	+3P3VAUX_WIFI
5	USB2_P4_DN	6	NC
7	GND	8	NC
9	NC	10	NC
11	NC	12	NC
13	GND	14	NC

Pin	Signal	Pin	Signal
15	NC	16	NC
17	NC	18	GND
19	GND	20	NC
21	NC	22	RXD
23	NC	24	KEY
25	KEY	26	KEY
27	KEY	28	KEY
29	KEY	30	KEY
31	KEY	32	UART0_TXD
33	GND	34	UART0_CTS
35	PCIE_P6_TXP	36	UART0_RTS
37	PCIE_P6_TXN	38	NC
39	GND	40	NC
41	PCIE_P6_RXP	42	NC
43	PCIE_P6_RXN	44	NC
45	GND	46	NC
47	PCIE_CLKP0	48	NC
49	PCIE_CLKN0	50	M.2_BTWIFI_SUS_CLK
51	GND	52	PLT_RST#
53	CLKREQ_N	54	NC
55	WAKE_N	56	NC
57	GND	58	NC
59	PCIE_P7_TXP	60	NC
61	PCIE_P7_TXN	62	NC
63	GND	64	NC
65	PCIE_P7_RXP	66	NC
67	PCIE_P7_RXN	68	NC

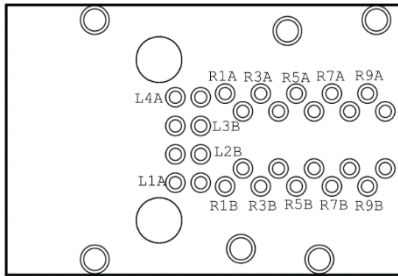
Pin	Signal	Pin	Signal
69	GND	70	NC
71	NC	72	+3P3VAUX_WIFI
73	NC	74	+3P3VAUX_WIFI
75	GND	-	-

### 2.3.10 RS-232/422 (CN11)



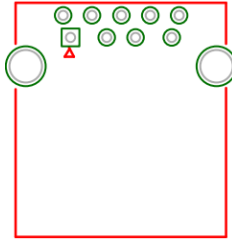
Pin	Signal	Pin	Signal
1	NC	2	GND
3	RTS/TX+	4	RX/RX+
5	CTS/RX-	6	TX/TX-

### 2.3.11 LAN (CN12)



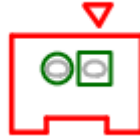
Pin	Signal	Pin	Signal
L1A	LAN1_ACTLEDN	L1B	LAN2_ACTLEDN
L2A	LAN1_ACTLEDP	L2B	LAN2_ACTLEDP
L3A	LAN1_LINK1000#	L3B	LAN2_LINK1000#
L4A	LAN1_LINK100#	L4B	LAN2_LINK100#
R1A	LAN1_MDI0+	R1B	LAN2_MDI0+
R2A	LAN1_MDI0-	R2B	LAN2_MDI0-
R3A	LAN1_MDI1+	R3B	LAN2_MDI1+
R4A	LAN1_MDI1-	R4B	LAN2_MDI1-
R5A	LAN1_MDI2+	R5B	LAN2_MDI2+
R6A	LAN1_MDI2-	R6B	LAN2_MDI2-
R7A	LAN1_MDI3+	R7B	LAN2_MDI3+
R8A	LAN1_MDI3-	R8B	LAN2_MDI3-
R9A	LAN1_DAC	R9B	LAN2_DAC
R10A	LAN1_GND	R10B	LAN2_GND

### 2.3.12 USB 3.0 (CN13)



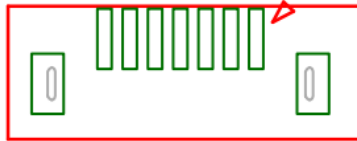
Pin	Signal	Pin	Signal
1	+V5P0_USB_1	2	USB2_DN3
3	USB2_DP3	4	GND
5	USB3_RXN3	6	USB3_RXP3
7	GND	8	USB3_TXN3
9	USB3_TXP3	-	-

### 2.3.13 RTC (CN14)



Pin	Signal	Pin	Signal
1	+V3P3A_RTC	2	GND

### 2.3.14 SATA (CN15)

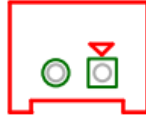


Pin	Signal	Pin	Signal
1	GND	2	SATA_TXP0
3	SATA_TXN0	4	GND
5	SATA_RXN0	6	SATA_RXP0
7	GND	-	-



### 2.3.15 SATA Power (CN16)

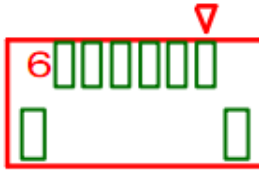
---



Pin	Signal	Pin	Signal
1	+V5S	2	GND

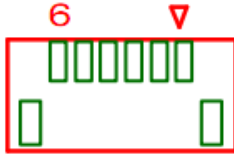
### 2.3.16 Front Panel (CN17)

---



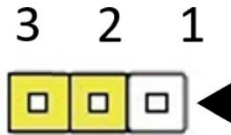
Pin	Signal	Pin	Signal
1	GND	2	SYSRST#
3	GND	4	PS_ON_SW
5	GND	6	SYS_LED+

### 2.3.17 Audio (CN18)



Pin	Signal	Pin	Signal
1	LOUT_R	2	LOUT_L
4	AUD_GND	5	MIC_IN_JD
7	AUDIO-JD	8	MIC_L_CN

### 2.3.18 Auto-Power Button Selection (JP1)



Pin	Signal
1-2	Disable
2-3	Enable (Default)

# Chapter 3

---

Software Installation

## 3.1 Linux Setup

---

UPS-EDGE-EHL01 supports Linux operating systems (see Chapter 1 for specifications). For instructions on how to install a Linux OS onto your UPS-EDGE-EHL01, you can find several guides and tutorials in the wiki section of the UP Board website at <https://up-board.org> for both installing supported distributions as well as porting your own Linux build.

## 3.2 Windows Drivers Installation

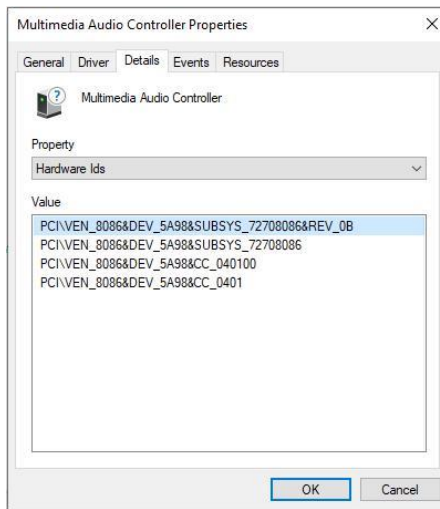
---

Drivers for UPS-EDGE-EHL01 can be downloaded from the UP Board website by following the link <https://up-board.org> and navigating to the Downloads section, then clicking on the UP Squared V2 Edge to find all relevant drivers.

### 3.3 Unknown Device Troubleshooting

After installing Windows drivers on UP Squared V2 Edge (UPS-EDGE-EHL01), you will see some unknown devices shown on device manager. Most unknown devices can be fixed by manually installing the driver from the Intel Serial IO 5.123.1.1023, except for Multimedia Audio Controller but here's how to fix it:

#### Multimedia Audio Controller

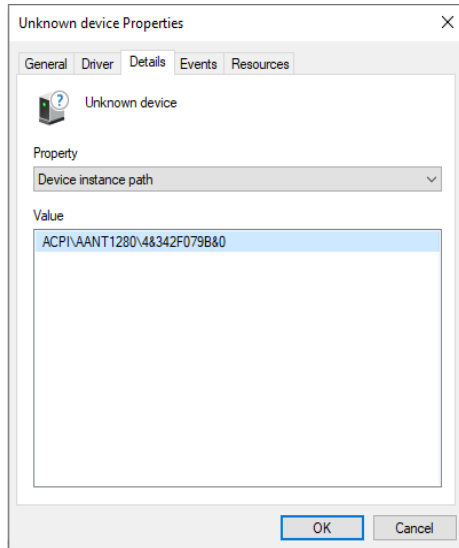


To fix the yellow exclamation mark “Multimedia Audio Controller”, please go to BIOS setting and revise the default as below:

**Setup > Chipset > PCH-IO Configuration > HD-Audio Configuration**

Find **HD-Audio DSP** and change the setting to “Disabled”

**VEN\_AANT&DEV\_1280:** This is the ADC for Linux, there is no Windows driver. This can be ignored.



# Appendix A

---

UP Framework SDK Installation

## A.1 Introduction

---

This section provides instructions for the installation of the UP Framework SDK. Instructions are provided for Windows 10 and Windows IoT Core. You can download the latest version of UP Framework SDK from the UP community:

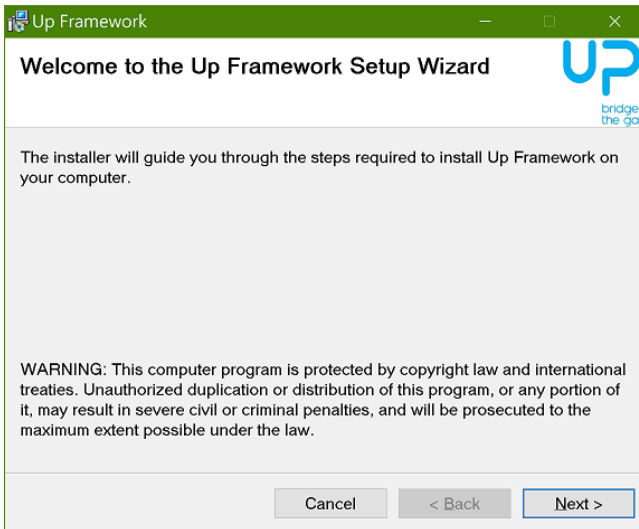
<https://downloads.up-community.org/download/up-sdk-for-windows-10-and-windows-iot/>

## A.2 Installation for Windows 10

---

### Step 1

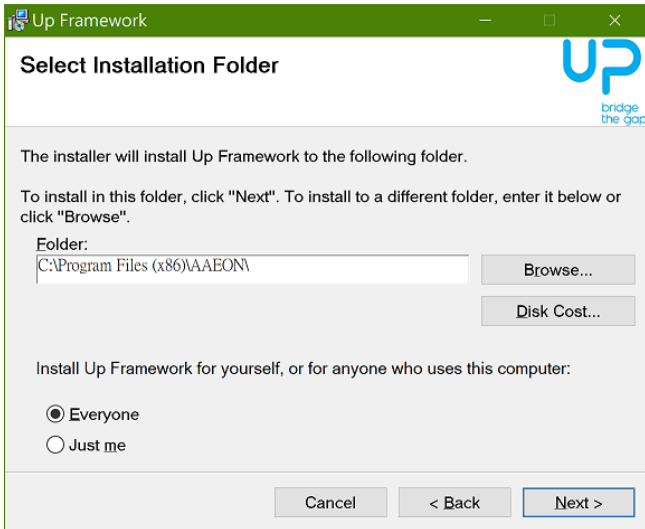
Locate the downloaded file UpFrameworkSetup.msi and run the installer. Press “Next” to begin the setup process.





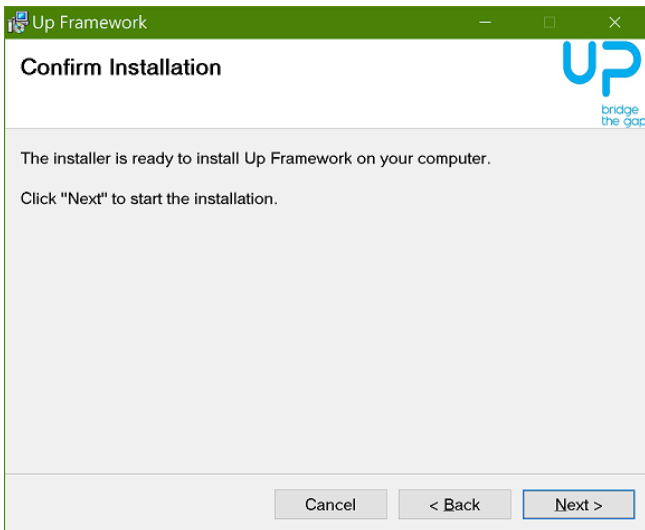
## Step 2

Select the installation folder. Default destination path is C:\Program Files(x86)\AAEON\  
You may also choose to install the UP Framework SDK for all users or only the current user. Press "Next" to continue installation.



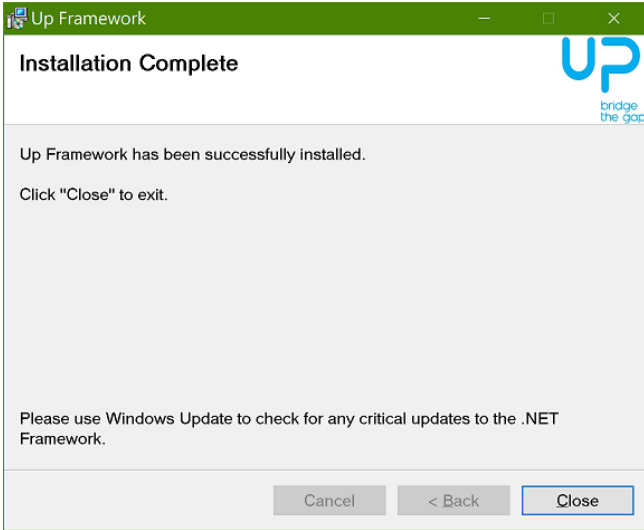
## Step 3

Press "Next" to confirm the installation.



## Step 4

Press "Close" to exit once setup is complete.



## A.3 Installation for Windows IoT Core

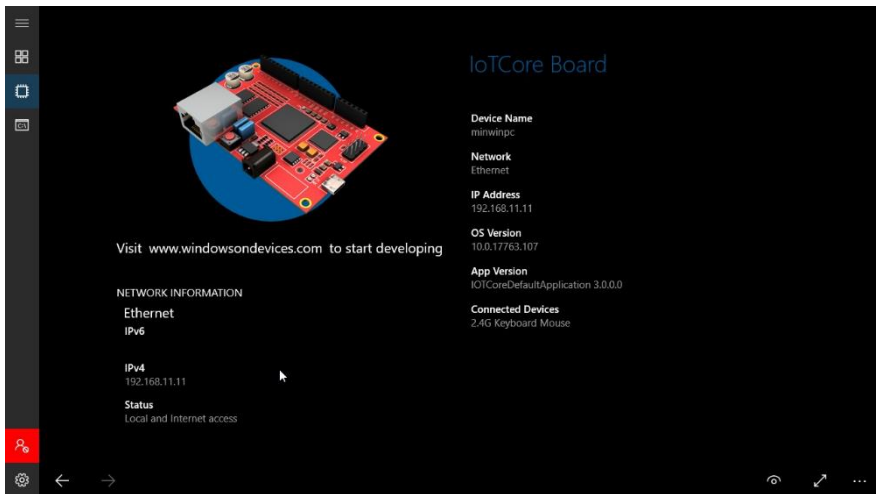
Before you begin, make sure you have downloaded and installed the latest version of the Windows IoT Core image from the UP community.

Installation requires using a connected PC with the UP Framework SDK software downloaded and saved.

**Note:** Make sure the UP IoT Core device is connected to the same network as the PC you are using to install the software from.

### Step 1

Turn on your UP IoT Core device and note the IP address at the home screen.

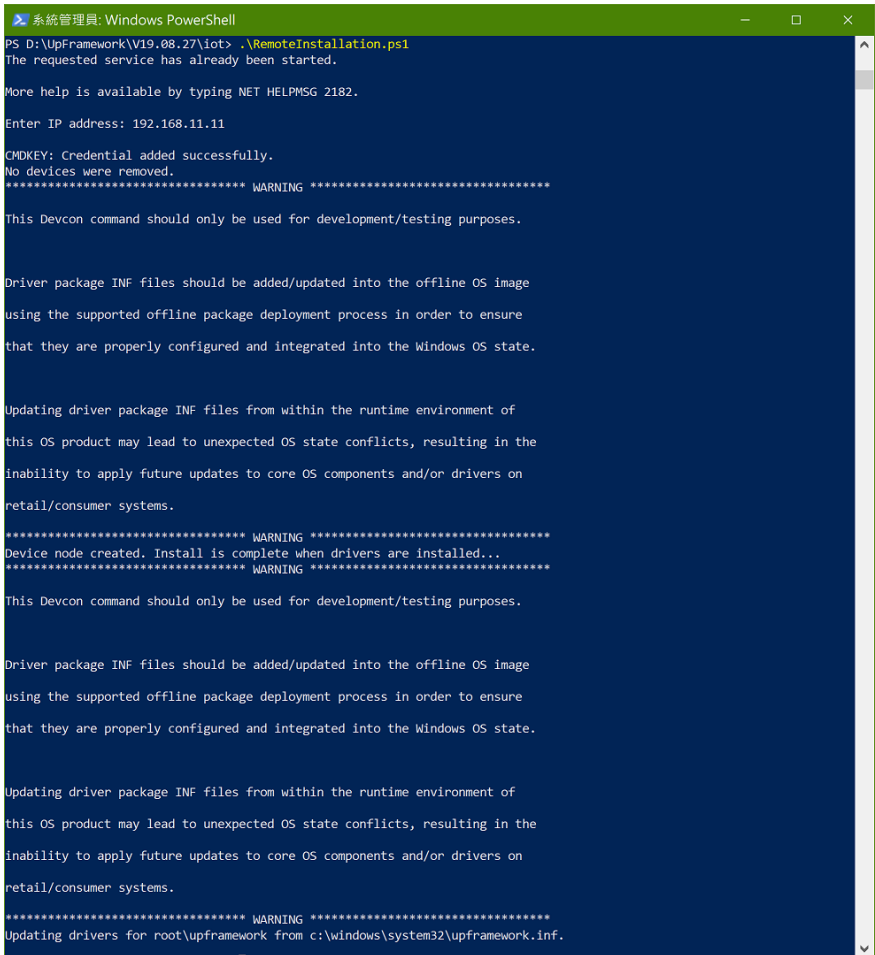


## Step 2

Download the UP Framework SDK to your PC and unzip the files.

Open PowerShell as an Administrator. Run the command `RemotelyInstallation.ps1` to install the UP Framework SDK.

Enter the IP address of the UP IoT Core device when prompted.



```
系統管理員: Windows PowerShell
PS D:\UpFramework\19.08.27\iot> .\RemotelyInstallation.ps1
The requested service has already been started.

More help is available by typing NET HELPMSG 2182.

Enter IP address: 192.168.11.11

CMDKEY: Credential added successfully.
No devices were removed.
***** WARNING *****

This Devcon command should only be used for development/testing purposes.

Driver package INF files should be added/updated into the offline OS image
using the supported offline package deployment process in order to ensure
that they are properly configured and integrated into the Windows OS state.

Updating driver package INF files from within the runtime environment of
this OS product may lead to unexpected OS state conflicts, resulting in the
inability to apply future updates to core OS components and/or drivers on
retail/consumer systems.

***** WARNING *****
Device node created. Install is complete when drivers are installed...
***** WARNING *****

This Devcon command should only be used for development/testing purposes.

Driver package INF files should be added/updated into the offline OS image
using the supported offline package deployment process in order to ensure
that they are properly configured and integrated into the Windows OS state.

Updating driver package INF files from within the runtime environment of
this OS product may lead to unexpected OS state conflicts, resulting in the
inability to apply future updates to core OS components and/or drivers on
retail/consumer systems.

***** WARNING *****
Updating drivers for root\upframework from c:\windows\system32\upframework.inf.
```

# Appendix B

---

Cables and Connectors

## B.1 Cables and Connectors

This table provides detailed information about the cables and connectors used by the UP Squared V2 Edge (UPS-EDGE-EHL01). If you have any questions about the configuration of your board, please contact your AAEON sales representative.

Location	Connector	Function Description	Mating Cable PN/ CONN PN	Mating Cable Description
SW1	<a href="#">1601000990</a>	PWR button		
CN1	<a href="#">165300320Q</a>	BIOS Prog		
CN19	<a href="#">1655802020</a>	FAN		
CN3	<a href="#">1655X00031</a>	USB Header	170010015G	(TF)USB Cable.10P 1.0mm Housing.USB A(F).15cm
CN4	<a href="#">165420753B</a>	M.2 2280 M-Key		
CN6	<a href="#">1652503109</a>	Power Input		
CN7	<a href="#">1654801832</a>	USB 3.0		
CN9	<a href="#">1654403931</a>	DP/HDMI		
CN10	<a href="#">1654207533</a>	M.2 2230 E-Key		
CN11	<a href="#">165300320Q</a>	RS-232/422	170X000556	(TF)COM Port.2*3P to D-SUB 9PP.Pitch=1.0mm.COM port cable.100mm.FLYINGWAY.FWAA-1529.for UPS-EHL01
CN12	<a href="#">1652828200</a>	LAN		
CN13	<a href="#">1654809302</a>	USB 3.0		
CN14	1655X00019	RTC	175011301K	(TF)Lithium Battery.CR2032H.3V.240mA H.w/cable 90mm.DIP.Battery power.BP-CR2032-M90-001
CN15	<a href="#">1654907009</a>	SATA	1709070500	(TF)SATA CABLE.7P Pitch 1.27mm.50cm
CN16	<a href="#">1655302025</a>	SATA PWR	1702150155 1702150306	(TF)Power Cable.15P SATA(F).2P 2.0mm Housing(PH).15cm (TF)Power Cable.15P SATA(F).2P 2.0mm Housing(PH).30cm

Location	Connector	Function Description	Mating Cable PN/ CONN PN	Mating Cable Description
CN17	<a href="#">1655906033</a>	Front Panel	170X000306	(TF)Cable.to 6P 1.00mm housing.Power switch cable.SW w/green LED.20cm.FLYINGWAY,FWAA-1348
CN18	<a href="#">1655906033</a>	Audio	170X000382	(TF)Cable.6PPitch=1.0mm.150mm.FLYINGWAY,FWAA-1473.Audio Jack Cable
LED1	<a href="#">1304300140</a>	PWR LED		
LED2	<a href="#">1304300140</a>	LED2		
LED3	<a href="#">1304200043</a>	LED3		
LED4	<a href="#">1304101440</a>	LED4		
LED5	<a href="#">1304000043</a>	LED5		
JP1	<a href="#">165300310G</a>	Auto-Power Button Selection		