

# Quick Installation Guide

## PICO-KBU4-SEMI

This document will guide you through the basic installation process for your new PICO-KBU4-SEMI.

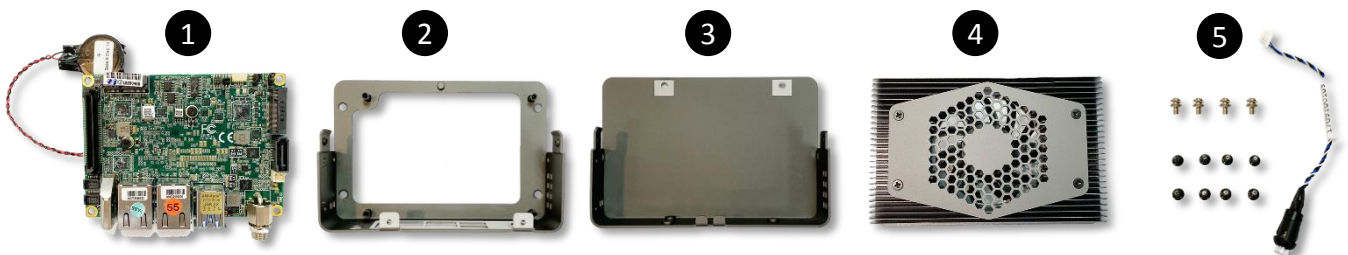


### PICO-KBU4-SEMI



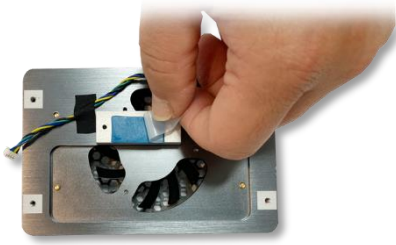
Item	Description	Remark/PN
1	PICO-KBU4-SEMI	MB
2	Top Chassis	M17KBU4000
3	Bottom Chassis	M17KBU4010
4	Cooler	17592SEMI0
5	Accessory kits	
	Power Button Cable x1	1709100109
	Screw.M3. Black x8pcs	S1D3004031
	Screw.M3 Nickel x4pcs	S1D5106010

### Packing

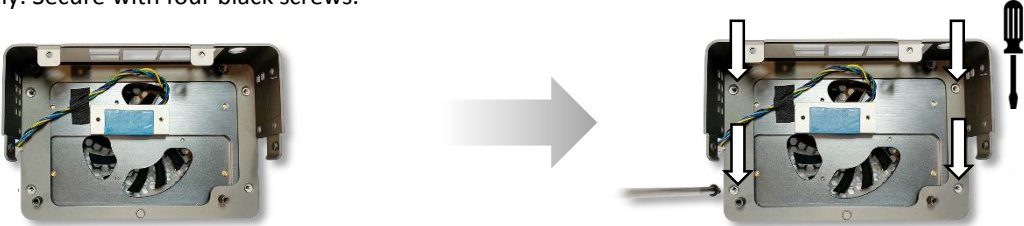


## Install Guide Steps

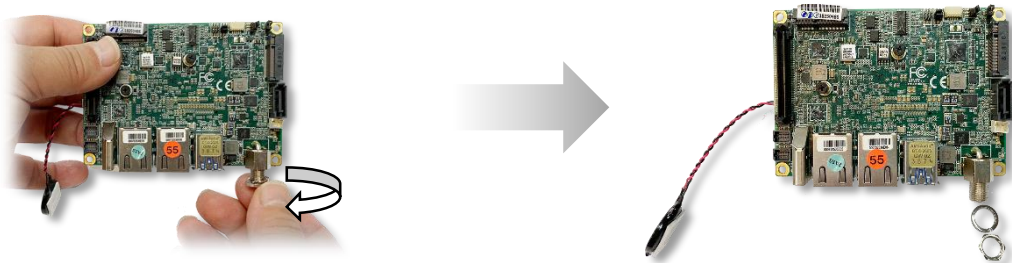
**Step 1:** On the thermal assembly, remove the plastic covering as shown.



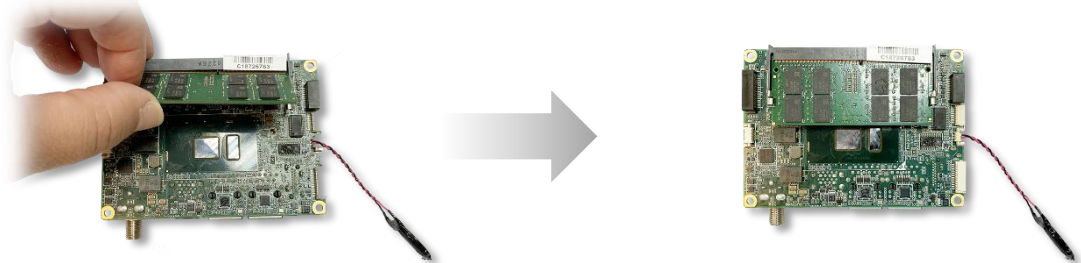
**Step 2:** Place the top chassis onto the thermal assembly. Note the orientation of the chassis with the thermal assembly. Secure with four black screws.



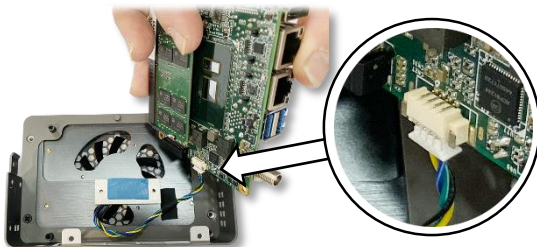
**Step 3:** On the PICO-KBU4 board, remove the nut and washer from the power input port.



**Step 4:** On the processor side of the PICO-KBU4 board, install the memory RAM module. Insert at an angle ( $\sim 30^\circ$ ) and then gently press down until it is secured in place.



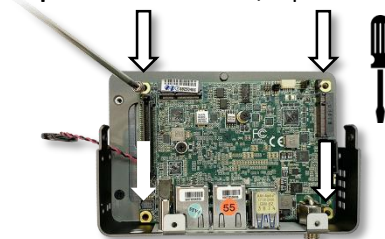
**Step 5:** Connect the thermal fan cable to the PICO-KBU4 board as shown.



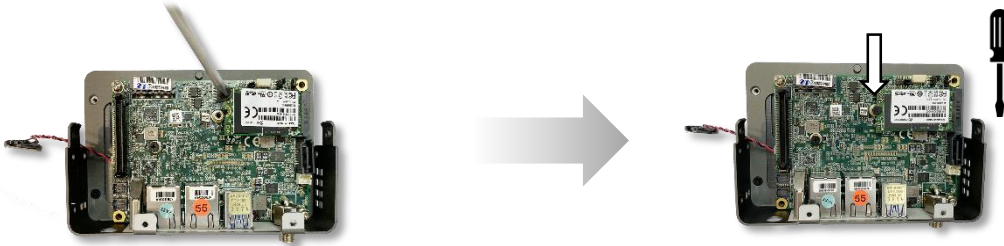
**Step 6:** Insert the PICO-KBU4 board into the chassis assembly with the processor side toward the thermal assembly. DO NOT place the CMOS battery between the board and thermal assembly.



**Step 7:** Check that the I/O ports are properly aligned. Secure board with four nickel screws.



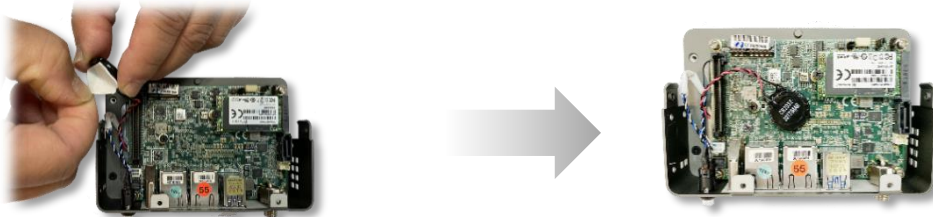
**Step 8:** To install m.2 storage module, first remove the securing screw. Insert the m.2 module at an angle (~30°). Press down gently and secure with screw.



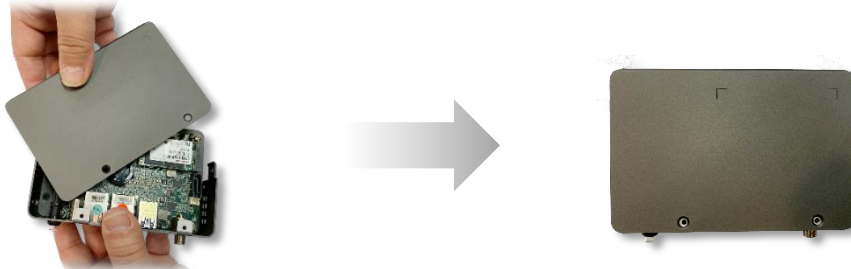
**Step 9:** Thread the power button cable through the hole for the power button. Plug the cable into the front panel connector (the 2nd connector from the front, CN15 in user manual), then gently push the power button in until it is secure (you will hear a 'snap'). NOTE: Be careful not to tangle the power button cable with the CMOS battery cable.



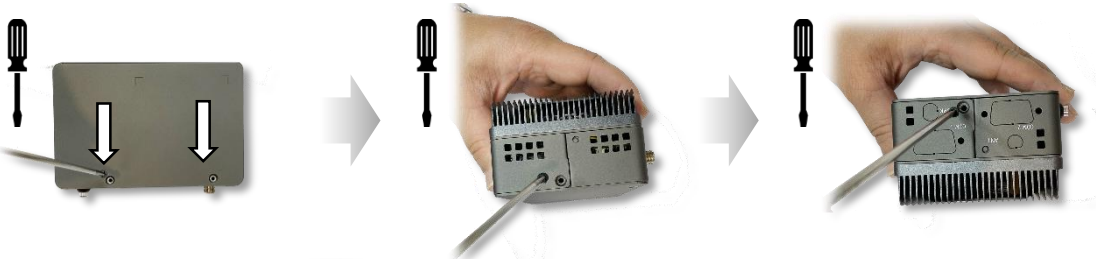
**Step 10:** Peel the backing off of the tape on the CMOS battery. Gently press the battery onto the PICO-KBU4 board to secure it.



**Step 11:** Attach the bottom chassis by first lining up the right side, then swivel the chassis into place. NOTE: the bottom chassis does not slide directly on, it must swivel into place as shown in the figure.



**Step 12:** Ensure the bottom chassis is properly lined up and attached. Use black screws to secure, two screws on the bottom and one screw on the left and right sides of the chassis.



**Step 13:** Replace the washer and nut for the power input port.

