

Notice

This guide is designed for experienced users to setup the system in the shortest time.

Safety Precautions

Warning!



Always completely disconnect the power cord from your board whenever you are working on it. Do not make connections while the power is on, because a sudden rush of power can damage sensitive electronic components.

Caution!



Always ground yourself to remove any static charge before touching the board. Modern electronic devices are very sensitive to static electric charges. Use a grounding wrist strap at all times. Place all electronic components on a static-dissipative surface or in a static-shielded bag when they are not in the chassis



A Message to the Customer

First of all, thank you for purchasing PER-V30C Mini PCI Video Capture module. This Quick Installation Guide will help you on the process of the installation. Please read it thoroughly before you start to install it. The product comes with a sheet of warranty for two years assurances except for improper use. Therefore, we strongly suggest you to read and refer to the Quick Installation Guide before any installation. You may visit AAEON website for the latest version of the instruction. Please refer to <http://www.aaeon.com.tw/>

Product Warranty

AAEON Customer Services

All products in AAEON are designed as the strictest specifications to ensure that the products will own the reliable performance in the typical industrial environments. Whether your purchase from AAEON is made to the purpose of the laboratory or the factory facility, you can be assured that every purchase in AAEON will provide the reliability and stability of operation. Your satisfaction is our primary concern. Here is a guide for AAEON's customer services. Ensure you get the full benefits of our services, please follow the instructions below step by step.

Technical Support

We require you to get the maximum performance from your products. If you run into technical difficulties, we'll be here always for you. For the most frequently asked questions, you can easily find solutions in your product documentation. The guide is specified detailedly so please refer to it first. Therefore, we suggest strongly that you can read it before asking for a customer service over the phone. If you still cannot find the answer, gather all questions you can think of and have the product at hand before giving a call to your dealer. All dealers of AAEON are well-trained and ready to provide you as many supports as we can. Based on the customer service we've encountered until

now, most of problems are minor and able to be easily solved over the phone. In addition, free-charged technical support is available from AAEON engineers in the office time. We are always pleased to give advice regarding to any installation and operation for AAEON products.

Ordering Information

- PER-V30C-A10

Mini PCI Single Channel Video Capture Module with Philips SAA7135

Packing List

- 1700030300 Audio Out Cable
- 1700090302 Audio & Video In Cable
- Quick Installation Guide
- Utility CD

Driver Installation Notice

Under the circumstance of Windows® 2000, service pack 4 update is essential.

Under the circumstance of Windows® XP, service pack 1 update is essential.

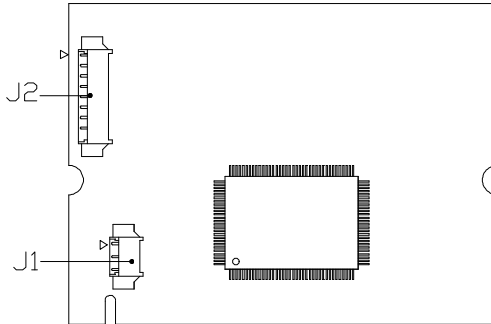
Content

A Message to the Customer	2
Product Warranty	3
Ordering Information	5
Packing List.....	5
Driver Installation Notice	5
1.1 Specifications	7
1.2 Location of Jumpers and Connectors	8
1.3 Mechanical Drawing	8
1.4 Audio Line out & AV Input Cable	9
1.5 J1 Audio Line out Connector	9
1.6 J2 AV Input Connector	10
1.7 Driver Installation	10

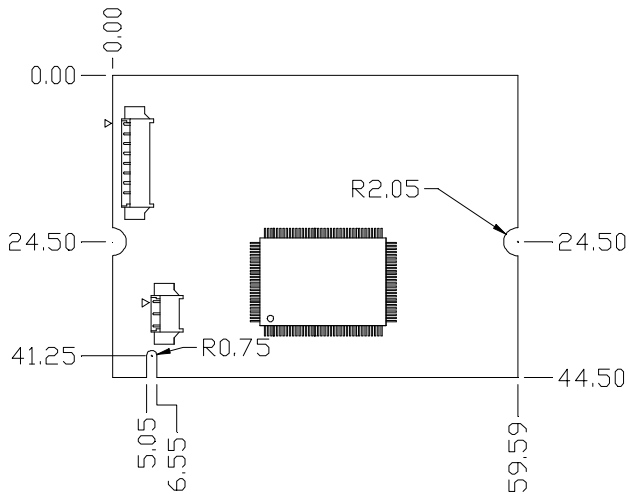
1.1 Specifications

- Form Factor Mini PCI Type III B
(44.5mm x 59.6mm)
- Video Decoder Philips SAA7135
- Video Input CVBS & S-Video
- Video Format Support NTSC & PAL
- Sample Rate 720 pixels / line
- Software Support Microsoft Windows® 2000 / XP
WDM driver for DirectShow based
application
- Operating Temperature 32°F~140°F (0°C~60°C)

1.2 Location of Jumpers and Connectors



1.3 Mechanical Drawing

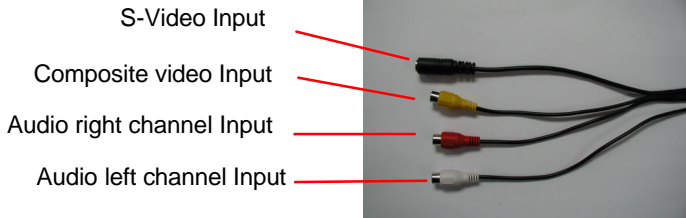


1.4 Audio Line out & AV Input Cable

Audio Line out Cable



AV Input Cable



1.5 J1 Audio Line out Connector

Pin	Signal
1	AUDIO_OUTR_CONN
2	AUDIO_OUTLCONN
3	GND

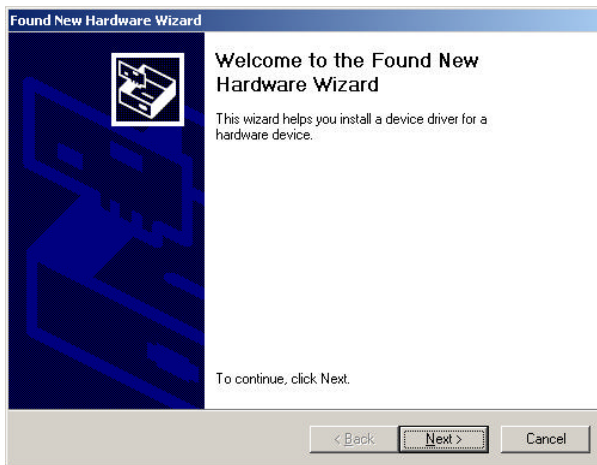
1.6 J2 AV Input Connector

Pin	Signal	Pin	Signal
1	SVH_YIN_CONN	2	SVH_CIN_CONN
3	GND	4	GND
5	CVBS_IN_CONN	6	GND
7	AUDIO_INR_CONN	8	AUDIO_INL_CONN
9	GND		

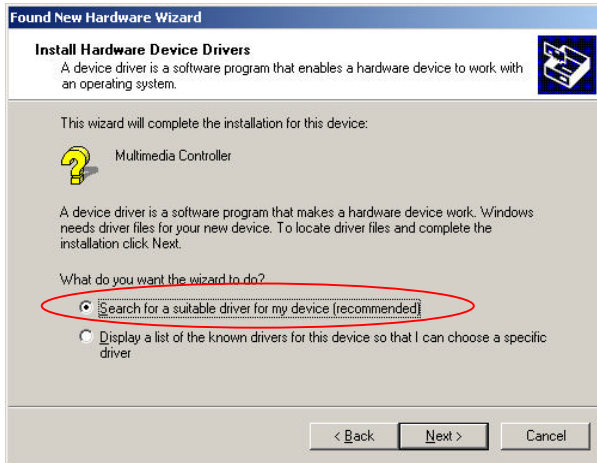
1.7 Driver Installation

AAEON appreciates you purchase our Mini PCI video Capture Module. We strongly recommend that you follow the steps below to complete the installation.

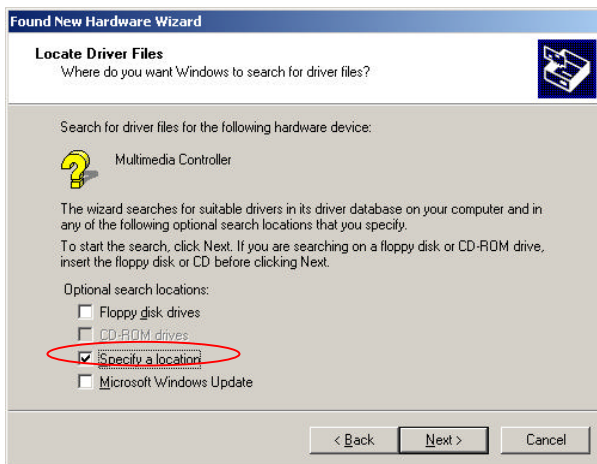
1. The window will be shown after you insert PER-V30C and boot up your system.



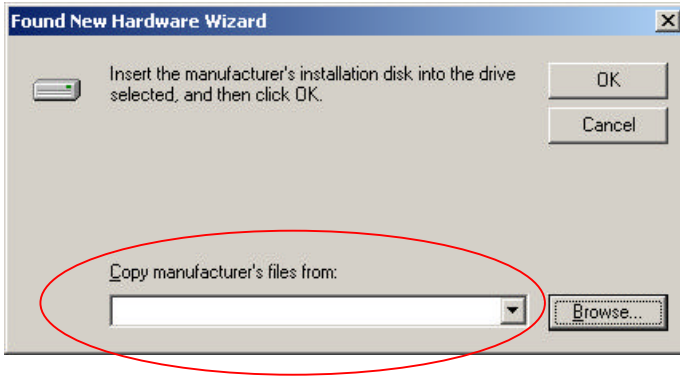
2. Choose the option as the illustration and click Next.



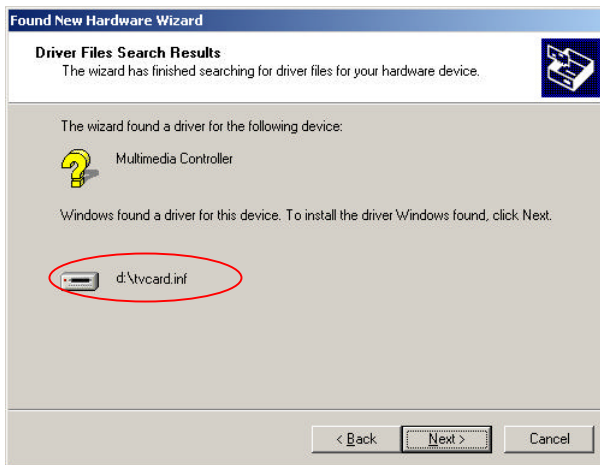
3. Tick "Specify a location" and click Next.



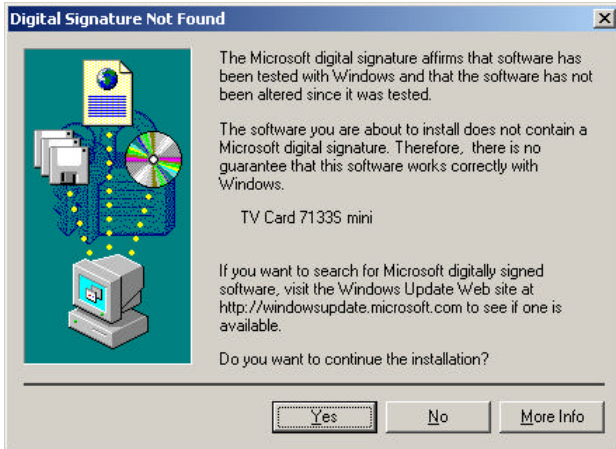
4. Select the CD-ROM drive location and find out *tvcard.inf*



5. When you find out the path of *tvcard.inf*, the window will be show as below.



- Click "Yes" and follow the next.



- You've done the PER-V30C driver installation. Reboot your system to make it renew.

