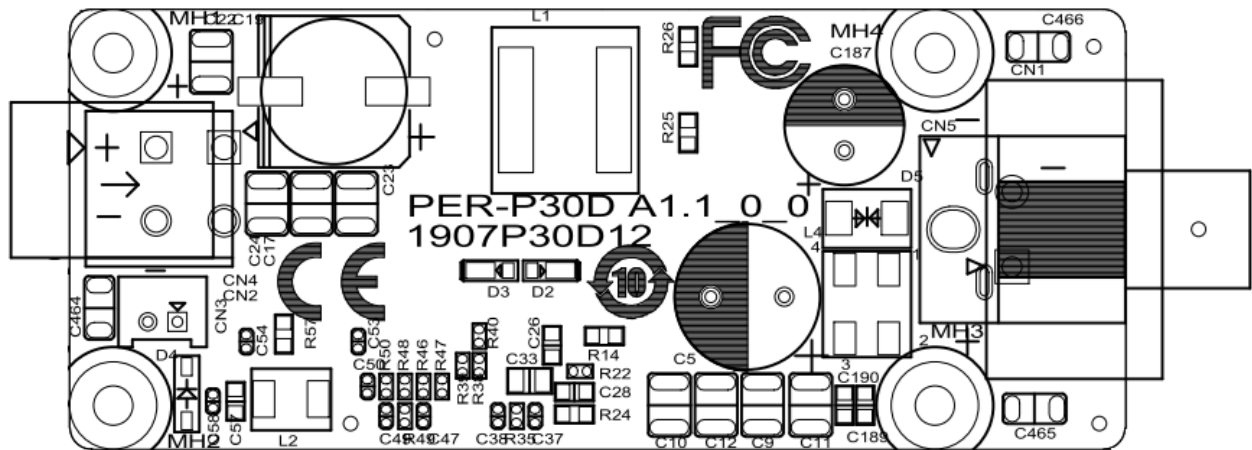


Jumper and Connector Setting for PER-P30D A1.0_0_0

1 List of Connectors

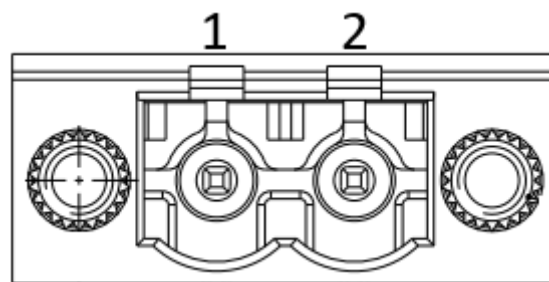


2 Connectors & Pin Headers

Label	Function
CN1(colay CN5)	9V – 36V Input Power Connector
CN2(colay CN4)	12V Output Power Connector
CN3	5V Output Power Connector

3 Connector Definition

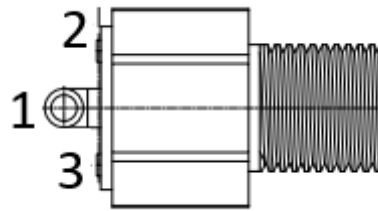
3.1 9V – 36V Input Power Connector (CN1) (Co-lay CN5)



Pin	Pin Name	Signal Type	Signal Level
1	9-36V	PWR	9-36V(16A)
2	GND	GND	

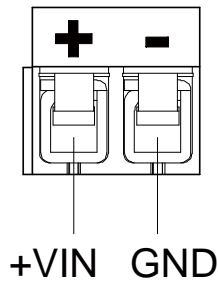
Jumper and Connector Setting for PER-P30D A1.0_0_0

3.2 9V – 36V Input Power DC Jack (CN5)



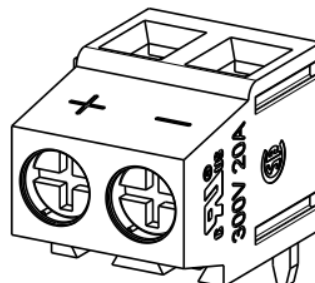
Pin	Pin Name	Signal Type	Signal Level
1	9-36V	PWR	9-36V(16A)
2	GND	GND	
3	GND	GND	

3.3 12V Output Power Connector (CN2) (Co-lay CN4)



Pin	Pin Name	Signal Type	Signal Level
1	12V	PWR	12V(10A)
2	GND	GND	

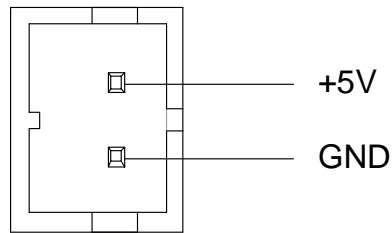
3.4 12V Output Power Connector (CN4)



Pin	Pin Name	Signal Type	Signal Level
1	12V	PWR	12V(10A)
2	GND	GND	

Jumper and Connector Setting for PER-P30D A1.0_0_0

3.5 5V Output Power Connector (CN3)



Pin	Pin Name	Signal Type	Signal Level
1	+5V	PWR	+5V(1.5A)
2	GND	GND	

Note: CN3 offers 1.5A current for SATA CONN.

Connector No.	Function	Mating Connector		Available Cable	AAEON Cable P/N
		Vendor	Model No.		
CN1	9-36V Input Power Connector	Dinkle	2ESDVM-02P 5ESDV-02P	NA	1652602901165260210A
CN5	9-36V Input Power DC Jack	Shen Ming	655-237	NA	NA
CN2/CN4	12V Output Power Connector	NA	NA	Power cable 15cm	170X000742
CN3	5V Output Power Connector	JST	JST PHR-2	SATA power cable 15cm	1702150155