

PCM-3538R-Receiver

PCM-3538T-Transmitter

Notice:

This guide is designed for experienced users to setup the system within the shortest time. For detailed information, please always refer to the electronic user's manual.

Safety Precautions

Warning!



Always completely disconnect the power cord from your chassis whenever you work with the hardware. Do not make connections while the power is on. Sensitive electronic components can be damaged by sudden power surges. Only experienced electronics personnel should open the PC chassis.

Caution!



Always ground yourself to remove any static charge before touching the CPU card. Modern electronic devices are very sensitive to static electric charges. As a safety precaution, use a grounding wrist strap at all times. Place all electronic components in a static-dissipative surface or static-shielded bag when they are not in the chassis.

Notice

If PCM-3538T/R is incorporated with Gene-5310, the LVDS panel voltage **must be** 3.3 Volt.

Quick Installation Guide

PCM-3538R Jumper & Connector

Jumpers

Label	Function
J1	Power Supply Connector
JP1	LCD VCC 5V
JP2	LCD VCC On/Off
JP3	LCD Clock

Connectors

CN1	LVDS Channel 1 (Even)
CN2	LVDS Cable Connector (D Type)
CN3	LVDS Channel 2 (Odd)
CN4	Hirose DF-13-10P
CN5	Hirose DF-13-40P
CN6	Hirose DF-13-20P

PCM-3538T Jumper & Connector

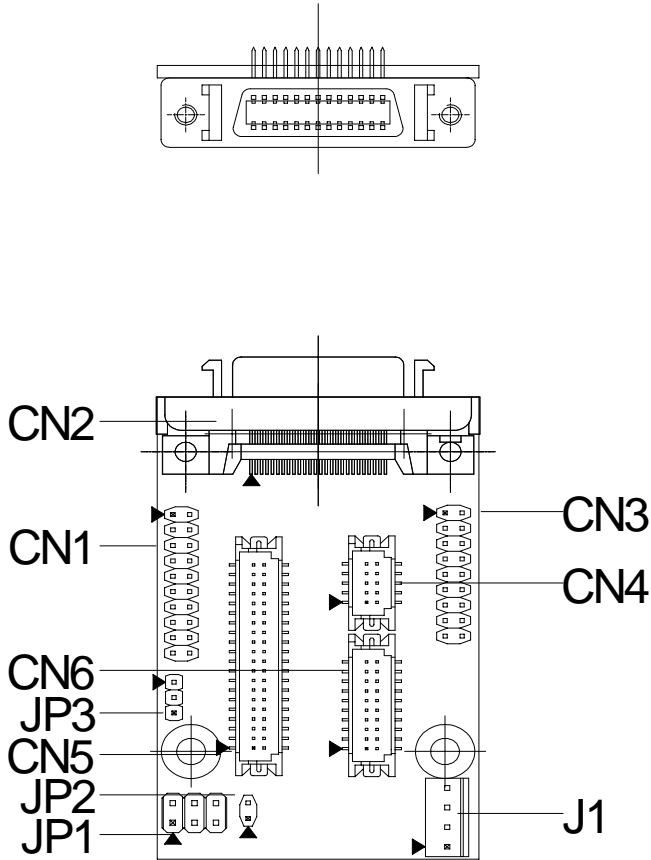
Jumpers

Label	Function
J1	LCD Voltage Adjust

Connectors

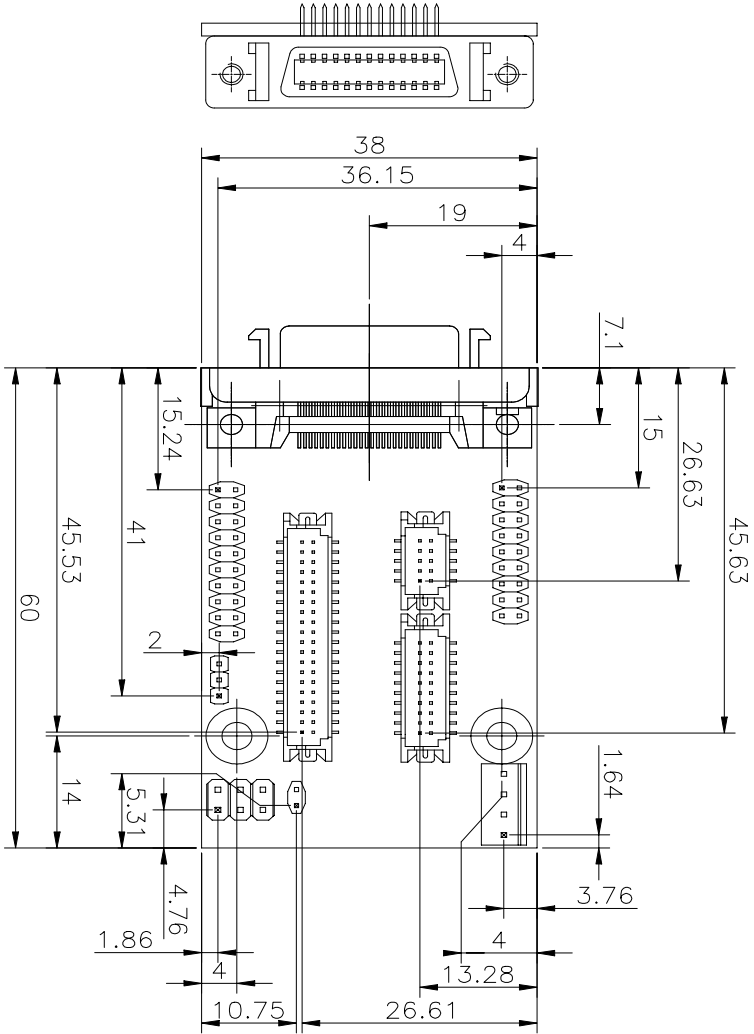
CN1	LVDS Channel 1 (Even)
CN2	LVDS Cable Connector (D Type)
CN3	LVDS Channel 2 (Odd)
CN4	Hirose DF-13-10P
CN5	Hirose DF-13-40P
CN6	Hirose DF-13-20P

PCM-3538R Board Layout

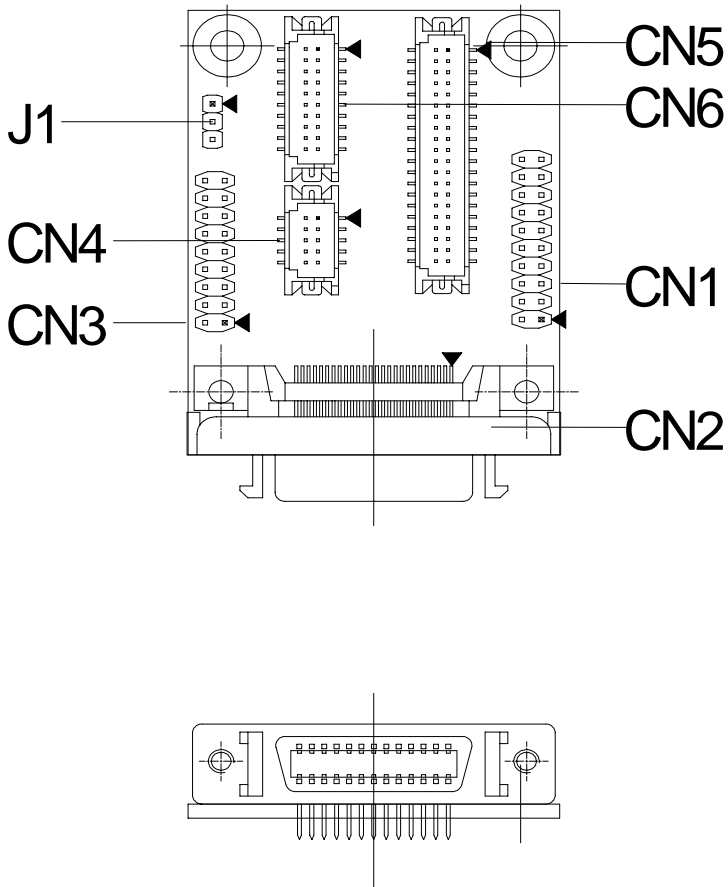


Quick Installation Guide

PCM-3538R Mechanical Drawing

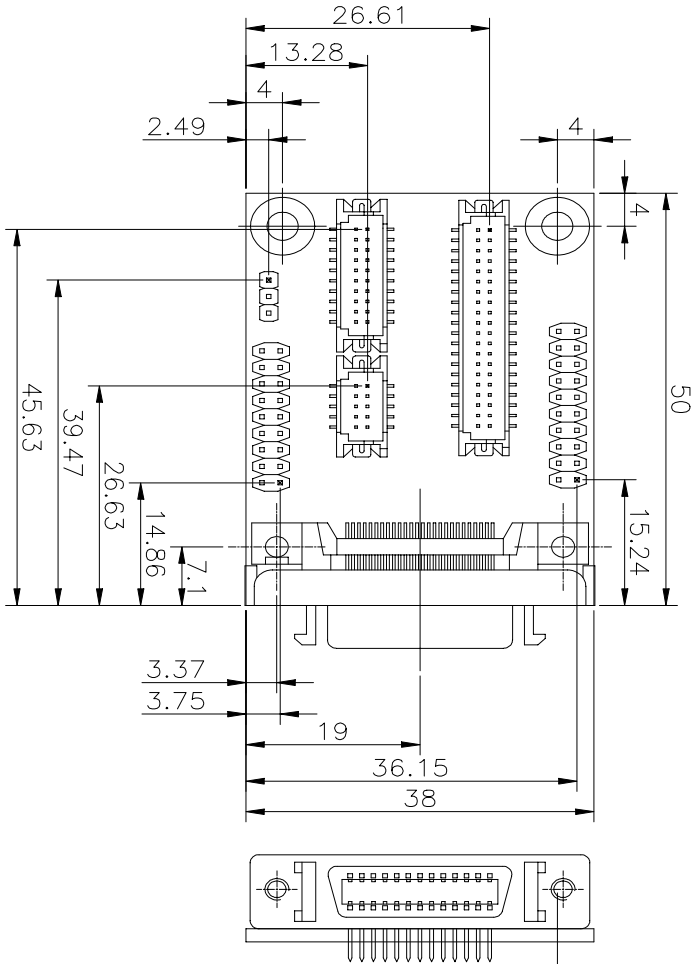


PCM-3538T Board Layout



Quick Installation Guide

PCM-3538T Mechanical Drawing



Installing PCM-3538R & PCM-3538T

PCM-3538R acts as the receiver module in this LVDS interface, it is to be placed with the LCD panel.

PCM-3538T acts as the transmitter module in this LVDS interface, it is to be placed with the single board computer.

Quick Installation Guide

PCM-3538R & PCM-3538T



PCM-3538R LVDS Even (CN1)

Pin	Signal	Pin	Signal
1	RXE1P	2	RXE1M
3	GND	4	GND
5	RXECKP	6	RXECKM
7	GND	8	LCD VCC
9	LCD VCC	10	LCD VCC
11	RXE2P	12	RXE2M
13	GND	14	GND
15	RXE0P	16	RXE0M
17	RXE3P	18	RXE3M
19	NC	20	NC

Quick Installation Guide

PCM-3538R LVDS Cable Connector (CN2)

PIN	SIGNAL	PIN	SIGNAL
1	RXE0M	2	RXE3M
3	RXE1P	4	RXE2M
5	GND	6	RXECKP
7	LCD VCC	8	GND
9	RXO0P	10	RXO1M
11	RXO3M	12	RXO2P
13	RXOCKM	14	RXE0P
15	RXE1M	16	RXE3P
17	RXE2P	18	RXECKM
19	GND	20	LCD VCC
21	RXO0M	22	GND
23	RXO1P	24	RXO2M
25	RXO3P	26	RXOCKP

PCM-3538R LVDS ODD (CN3)

PIN	SIGNAL	PIN	SIGNAL
1	RXO1P	2	RXO1M
3	GND	4	GND
5	RXOCKP	6	RXOCKM
7	GND	8	LCD VCC
9	LCD VCC	10	LCD VCC
11	RXO2P	12	RXO2M
13	GND	14	GND
15	RXO0P	16	RXO0M
17	RXO3P	18	RXO3M

Quick Installation Guide

Power Supply Connector (J1) PCM-3538R

(J1) Pin definition

Pin	Function
1	5V
2	GND
3	GND
4	12V

LCD VCC (JP2) PCM-3538R

LCD VCC (JP2)

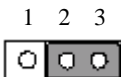
ON (must enable for LCD engagement)



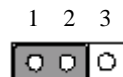
LCD Clock (JP3) PCM-3538R

LCD Clock (JP3)

LCD CLK+*



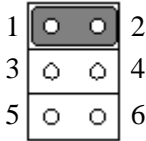
LCD CLK-



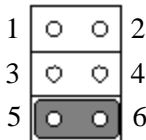
Default*

LCD Voltage Select (JP1) PCM-3538R

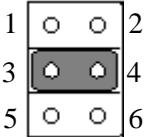
(JP1)



LCD VCC (5V)



LCD VCC (3.3V)



Cable Adjust LCD Voltage *

Default*

LCD Voltage Select (J1) PCM-3538T

LCD Voltage Select (J1)

5V

1 2 3



3.3V

1 2 3



Quick Installation Guide

PCM-3538T LVDS EVEN (CN1)

PIN	SIGNAL	PIN	SIGNAL
1	TXE1P	2	TXE1M
3	GND	4	GND
5	TXECKP	6	TXECKM
7	GND	8	LCD VCC
9	LCD VCC	10	LCD VCC
11	TXE2P	12	TXE2M
13	GND	14	GND
15	TXE0P	16	TXE0M
17	TXE3P	18	TXE3M

PCM-3538T LVDS Cable Connector (CN2)

PIN	SIGNAL	PIN	SIGNAL
1	TXE0M	2	TXE3M
3	TXE1P	4	TXE2M
5	GND	6	TXECKP
7	LCD VCC	8	GND
9	TXO0P	10	TXO1M
11	TXO3M	12	TXO2P
13	TXOCKM	14	TXE0P
15	TXE1M	16	TXE3P
17	TXE2P	18	TXECKM
19	GND	20	LCD VCC
21	TXO0M	22	GND
23	TXO1P	24	TXO2M
25	TXO3P	26	TXOCKP

Quick Installation Guide

PCM-3538T LVDS ODD (CN3)

PIN	SIGNAL	PIN	SIGNAL
1	TXO1P	2	TXO1M
3	GND	4	GND
5	TXOCKP	6	TXOCKM
7	GND	8	LCD VCC
9	LCD VCC	10	LCD VCC
11	TXO2P	12	TXO2M
13	GND	14	GND
15	TXO0P	16	TXO0M
17	TXO3P	18	TXO3M

Hirose DF-13-10P Connector (CN4)

PIN	SIGNAL	PIN	SIGNAL
1	GND	2	GND
3	BB0	4	BB1
5	GB0	6	GB1
7	RB0	8	RB1
9	GND	10	GND

Quick Installation Guide

Hirose DF-13-20P Connector (CN6)

1	GND	2	GND
3	BB2	4	BB3
5	BB4	6	BB5
7	BB6	8	BB7
9	GB2	10	GB3
11	GB4	12	GB5
13	GB6	14	GB7
15	RB2	16	RB3
17	RB4	18	RB5
19	RB6	20	RB7

Hirose DF-13-40P Connector (CN5)

PIN	SIGNAL	PIN	SIGNAL
1	LCD_VCC5	2	LCD_VCC5
3	GND	4	GND
5	LCD_VCC3	6	LCD_VCC3
7	GND	8	GND
9	BA0	10	BA1
11	BA2	12	BA3
13	BA4	14	BA5
15	BA6	16	BA7
17	GA0	18	GA1
19	GA2	20	GA3
21	GA4	22	GA5
23	GA6	24	GA7
25	RA0	26	RA1
27	RA2	28	RA3
29	RA4	30	RA5
31	RA6	32	RA7
33	GND	34	GND
35	LCD CLK	36	LCD VS
37	LCD DE	38	LCD HS
39	VCC3	40	NC

Quick Installation Guide

