

Flat Panel/CRT Controller Display Drivers and Utilities

This chapter provides information about:

- Driver types and installation

Software Drivers

This chapter describes the operation and installation of the display drivers supplied on the Supporting CD-ROM that are shipped with your product.

The onboard VGA adapter is based on the CHIPS VGA Flat Panel/CRT controller and is fully IBM VGA compatible. This controller offers a large set of extended functions and higher resolutions. If you intend to use your VGA adapter in standard VGA modes only, you do not need to install any of these drivers. Since your VGA adapter is fully compatible, it does not require any special drivers to operate in standard modes.

The purpose of the enclosed software drivers is to take advantage of the extended features of the CHIPS VGA Flat Panel/CRT controller.

Hardware configuration

Some of the high-resolution drivers provided in this package will work only in certain system configurations. If a driver does not display correctly, try the following:

1. Change the display controller to CRT-only mode, rather than flat panel or simultaneous display mode. Some high-resolution drivers will display correctly only in CRT mode.
2. If a high-resolution mode is not supported on your system, try using a lower-resolution mode. For example, 1024 x 768 mode will not work on some systems, but 800 x 600 mode is supported on most.

Necessary prerequisites

The instructions in this manual assume that you understand elementary concepts of MS-DOS and the IBM Personal Computer. Before you attempt to install any driver from the Supporting CD-ROM, you should:

- Know how to copy files from a CD-ROM to a directory on the hard disk
- Understand the MS-DOS directory structure

If you are uncertain about any of these concepts, please refer to the DOS or OS/2 user reference guides for more information before you proceed with the installation.

Before you begin

Make sure you know the version of the application for which you are installing drivers. The Supporting CD-ROM contain drivers for several versions of certain applications. For your driver to operate properly, you must install the driver for your version of the application program.

Windows® 95

These drivers are designed to work with Microsoft® Windows®. You can install these drivers through the Windows® operating system.

Driver installation

1. Install Windows® 95 as you normally would for a VGA display. Click the Start button, go to Settings and click on Control Panel. Choose the Display icon and double click on the icon. In the Display Properties window, show as figure 1:



figure 1

Click the setting button, then click the Advanced Properties icon into the Advanced Display properties windows, show as figure2:



figure 2

click on Change Display Type. In the Change Display Type window, click on the Change button under Adapter Type into the select Device window show as figure 3: This will bring up the Select Device window.



figure 3

2. Place the Supporting CD-ROM in your CD-ROM drive.

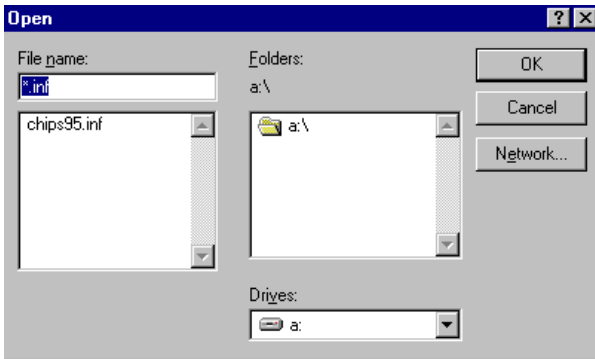


figure 4

In the Select Device window, click on Have Disk, Select Browse, and find the Win95 driver "chips95.inf" in the Supporting CD-ROM:

cd-rom: \CD ROM\model name\driver\vga driver
 \win95\chips95.inf and then click OK.

"cd-rom" : the drive letter of your CD-ROM drive

"model name" : the model number of your product

The name of the Chips And Tech " 69000 PCI " driver will appear highlighted in the Models list box how as figure. Click OK to start the driver installation show as figure 5:

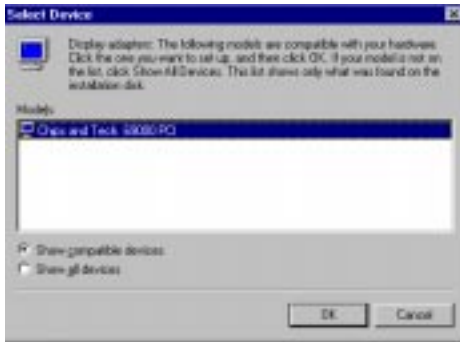


figure 5

3. Once the installation is complete, the Advanced display Properties window will reappear. Show as figure 6:

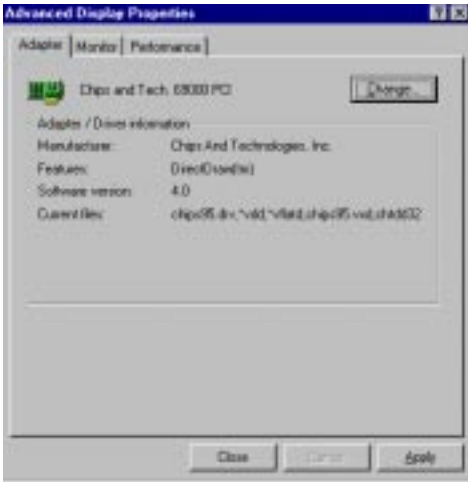


figure 6

Click on close to close the window. Then the Display Properties window will reappear. Show as figure 7:



figure 7

Click on Apply. Restart the system for the new settings to take effect, show as figure 8:

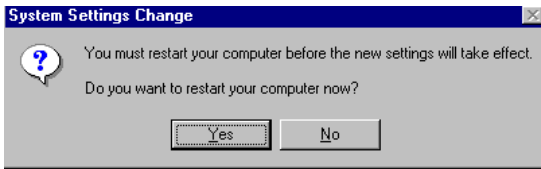


figure 8

Windows® 3.1

These drivers are designed to work with Microsoft Windows Version 3.1. You should install these drivers through Windows.

Driver installation

1. Install Windows as you normally would for a VGA display. Run Windows to make sure that it is working correctly.
2. Place the Supporting CD-ROM into your CD-ROM drive. In Windows Program Manager, choose File from the Options Menu. Then from the pull-down menu, choose Run. At the Command Line prompt, type.

```
cd-rom:\CD ROM\model name\driver\vga driver\win31\setup.exe
```

Press the <ENTER> key or click OK to begin the installation.

"cd-rom" : the drive letter of your CD-ROM drive

"model name" : the model number of your product

At this point the setup program locates the directory where Windows is installed. For proper operation, the drivers must be installed in the Windows subdirectory.

3. Press <ENTER> to complete the installation. Once completed, you can find the icon Chips CPL under the Control Panel. The icon allows you to select and load the installed drivers.

OS/2

These drivers are designed to function with the OS/2 Version 4.0, 3.0 and 2.11 operating systems.

To install this driver, do the following steps:

1. Open an OS/2 full screen or windowed session.
2. Place the Supporting CD-ROM into your CD-ROM drive.
3. At the OS/2 command prompt, type the following commands to copy the files to the OS/2 drive:

```
cd-rom :\CD ROM\model name\driver\vga driver\os2\setup.cmd
```

"cd-rom" : the drive letter of your CD-ROM drive

"model name" : the model number of your product

When the Setup Program is completed, you will need to perform a shutdown and then restart the system in order for changes to take effect.

A log of the information output during the install can be found in <root>:\OS2\INSTALL\DISPLAY.LOG

4. After restarting the system, perform the following steps:
 1. Open the OS/2 System folder.
 2. Open the System Setup folder.
 3. Open the Display Driver Install Object.

This step will execute the Display Driver Installation (DSPINSTL) utility program to finish installation of the new drivers.

4. When the Display Driver Install window appears, select Primary Display and then select OK.
5. When the Primary Display Driver List window appears, select "Chips and Technologies 69000" from the list of adapter types, then select OK or install the video driver.

6. When the installation is complete, you will need to shut down and then restart the system for the changes to take effect. Make sure to remove the installation diskette before restarting the system.

Windows® NT 3.51

These drivers are designed to work with Microsoft® Windows®.

Driver installation

1. Install Windows® NT 3.51 as you normally would for a VGA display. Click the Start button, go to Settings and click on Control Panel icon. Then choose the Display and double click on the icon. In the Display Properties window, click the Setting button, then click the Display Type button into the Display Type windows, then click on Change button from the Adapter Type icon. And click on Have Disk button in the change display window.
2. Place the Supporting CD-ROM into your CD-ROM drive.

and type:

```
cd-rom: \CD ROM\model name\drive\vga drive\  
win98 nt\windows.nt\nt35\Oemsetup.inf
```

"cd-rom" : the drive letter of your CD-ROM drive

"model name" : the model number of your product

Select the adapter "Chips and Tech 69000PCI" and click OK.

Click on Install to install the selected driver. Once the installation is complete, shut down and restart the system.

Driver installation

1. Install Windows® 98 as you normally would for a VGA display. Click the Start button, go to Settings and click on Control Panel icon. Then choose the Display and double click on the icon. In the Display Properties window, click the Setting button from the Display Type window, and click on Advanced button in the change display window. Next select the Adapter menu from the many tabs in the Advanced window. Then select Change from the adapter menu. A Update Device Driver Wizard will appear, click on the Next button at the bottom. The next Driver Wizard window will provide you with two choices, select Display a list of all the Drivers in a specific location, so you can select the driver you want. Following select the Have Disk option. You will be asked to provide the manufacturers file from a certain location, select your CD-ROM drive and click on Browse.

2. Place the Supporting CD-ROM into your CD-ROM drive. In the Select Device window, click on Have Disk, select "Browse" and find the WIN 98 driver from:

```
cd-rom : \CD ROM\model name\driver\vga driver\win98  
\windows.\Oemsetup.inf
```

"cd-rom" : the drive letter of your CD-ROM drive

"model name" : the model number of your product

and then click OK. The name of the Chips and Technologies, Inc. Video Controller driver will appear highlighted in the Modules list box. Select Chips and Tech. 69000 and Click OK. Click OK to start the driver installation.

3. Once the installation is complete, the Change Display Type window will reappear. Click on close to close the window. Then the Display Properties window will reappear. Click on Apply. Restart the system for the new settings to take effect.

Windows® NT 4.0

Driver installation

1. Install Windows® NT 4.0 as you normally would for a VGA display. Click the Start button, go to Settings and click on Control Panel icon. Then choose the Display and double click on the icon. In the Display Properties window, click the Setting button, then click the Display Type button into the Display Type windows, then click on Change button from the Adapter Type icon. And click on Have Disk button in the change display window.
2. Place the Supporting CD-ROM into your CD-ROM drive. In the Select Device window, click on Have Disk, select "Browse" and find the NT 4.0 driver from:

```
cd-rom : \CD ROM\model name\driver\vga driver\          win98  
nt\windows.nt\nt40\Oemsetup.inf
```

"cd-rom" : the drive letter of your CD-ROM drive

"model name" : the model number of your product

and then click OK. The name of the Chips and Technologies, Inc. Video Controller driver will appear highlighted in the Modules list box. Select Chips and Tech. 69000 and Click OK. Click OK to start the driver installation.

3. Once the installation is complete, the Change Display Type window will reappear. Click on close to close the window. Then the Display Properties window will reappear. Click on Apply. Restart the system for the new settings to take effect.