

Subcompact Board

GENE-6350

GENE-6350

Intel® Ultra Low Voltage
Celeron® 400/650MHz Processor
Subcompact Board
With LCD, Ethernet,
6 Channel Audio & Mini PCI

GENE-6350 Rev. A Manual 1st Ed.

July. 2004

Copyright Notice

This document is copyrighted, 2004. All rights are reserved. The original manufacturer reserves the right to make improvements to the products described in this manual at any time without notice.

No part of this manual may be reproduced, copied, translated, or transmitted in any form or by any means without the prior written permission of the original manufacturer. Information provided in this manual is intended to be accurate and reliable. However, the original manufacturer assumes no responsibility for its use, or for any infringements upon the rights of third parties that may result from its use.

The material in this document is for product information only and is subject to change without notice. While reasonable efforts have been made in the preparation of this document to assure its accuracy, AAEON assumes no liabilities resulting from errors or omissions in this document, or from the use of the information contained herein.

AAEON reserves the right to make changes in the product design without notice to its users.

Acknowledgments

All other product's name or trademarks are properties of their respective owners.

- Award is a trademark of Award Software International, Inc.
- CompactFlash™ is a trademark of the Compact Flash Association.
- Intel®Ultra Low Voltage Celeron®is trademark of Intel®Corporation.
- Microsoft Windows® is a registered trademark of Microsoft Corp.
- ITE is a trademark of Integrated Technology Express, Inc.
- IBM, PC/AT, PS/2, and VGA are trademarks of International Business Machines Corporation.
- SoundBlaster is a trademark of Creative Labs, Inc.

Packing List

Before you begin installing your card, please make sure that the following materials have been shipped:

- 1 GENE-6350 CPU Card
- 1 IDE cable
- 1 FDD cable
- 1 PS/2 KB mouse cable
- 2 USB cable
- 1 Audio cable
- 1 5.1 channel Audio cable
- 3 COM Port cable
- 1 TV-Out cable (For TV-Out Model Only)
- 1 DVI cable (For DVI Model Only)
- 1 Parallel Port cable
- 1 Jumper Cap
- 1 Quick Installation Guide
- 1 CD-ROM for manual (in PDF format) and drivers

If any of these items should be missing or damaged, please contact your distributor or sales representative immediately.

Contents

Chapter 1 General Information

1.1 Introduction	1-2
1.2 Features	1-4
1.3 Specifications	1-5

Chapter 2 Quick Installation Guide

2.1 Safety Precautions	2-2
2.2 Location of Connectors and Jumpers	2-3
2.3 Mechanical Drawing.....	2-5
2.4 List of Jumpers	2-7
2.5 List of Connectors	2-8
2.6 Setting Jumpers.....	2-10
2.7 Clear CMOS Selection (JP1)	2-11
2.8 COM 3 Ring /+5V/+12V Selection (JP2).....	2-11
2.9 COM 4 Ring/+5V/+12V Selection (JP3).....	2-11
2.10 COM 2 RS-232/422/485 Selection (JP4 & JP5)	2-12
2.11 TFT_LCD Clock Selection (JP6)	2-12
2.12 SIR Connector (CN1).....	2-12
2.13 USB Connector (CN2)	2-13
2.14 USB Connector (CN3)	2-13
2.15 Audio Input/Output Connector (CN4)	2-13
2.16 Audio 5.1 Channel Connector(CN5)	2-14
2.17 Floppy Connector (CN6)	2-14

2.18 Primary IDE Hard Drive Connector (CN7)	2-15
2.19 Digital IO Connector (CN8).....	2-16
2.20 LPT Port Connector (CN9)	2-16
2.21 RS-232 Serial Port Connector (CN10, CN13 & CN21)	2-17
2.22 DVI Connector (CN11)	2-17
2.23 TV-Out Connector (CN12)	2-17
2.24 RS-232/422/485 Serial Port Connector (CN14).....	2-18
2.25 10/100Base-T Ethernet Connector (CN15)	2-18
2.26 Option ATX Power Connector (CN16).....	2-19
2.27 Big 4P Power Connector (CN17).....	2-19
2.28 TTL_LCD Connector (CN18)	2-19
2.29 PS/2 / KB / Mouse Connector (CN19)	2-20
2.30 CRT Display Connector (CN20)	2-21
2.31 Front Panel Connector (CN22)	2-21
2.32 CompactFlash Disk Connector (CN23)	2-21
2.33 Fan Connector (Fan2).....	2-22

Chapter 3 Award BIOS Setup

3.1 System Test and Initialization.	3-2
3.2 Award BIOS Setup.....	3-3
3.3 Main Menu	3-5
3.4 Advanced BIOS Features	3-6
3.5 Advanced Chipset Features	3-7
3.6 Integrated Peripherals	3-9
3.7 Power Management Setup.....	3-11
3.8 PnP/PCI configuration	3-12

3.9 PC Health Status.....	3-13
3.10 Clk / Voltage control.....	3-14
3.11 Load Optimized Defaults.....	3-15
3.12 Set Password	3-16
3.13 Save & Exit Setup.....	3-17
3.14 Exit without saving	3-18

Chapter 4 Driver Installation

4.1 Installation.....	4-3
-----------------------	-----

Appendix A Programming The Watchdog Timer

A.1 Programming	A-2
A.2 W83697 UF Watchdog Timer Initial Program	A-4

Appendix B I/O Information

B.1 I/O Address Map	B-2
B.2 1 st MB Memory Address Map	B-2
B.3 IRQ Mapping Chart	B-3
B.4 DMA Channel Assignments.....	B-3

Chapter

1

**General
Information**

1.1 Introduction

GENE-6350 is AAEON new generation subcompact board which provide higher performance, multi-functional choice and develop comprehensive applications of 3.5" board.

High stability computing platform

GENE-6350 applies for Intel Ultra Low Voltage Celeron®400/650MHz processor owning the Intel processor style which is high-performed and high-stable feature. Compared with other same level processors, Intel Ultra Low Voltage Celeron®400/650 can support higher computing ability but the power consumption won't increase for the sake of the high performance. The processor will be your best choice in the pursuit of high performance with low power consumption.

Your marvelous choice for compact multi-media platform

GENE-6350 not only play DVD format but also support 5.1 channel sound effect output which make your multi-media platform offer the excellent video display and 3D surrounding audio quality. Undoubtedly, GENE-6350 is the model with multi-orientation. Besides, it provides several display interfaces including CRT, LCD, TV, DVI. Furthermore, under the CRT/LCD, LCD/TV, LCD/DVI configuration, the model can show the different contents in two separate display monitor. For the merits of multi-media platform, GENE-6350 will become your marvelous and unique choice in 2004.

Extensive possibility

GENE-6350 can support comprehensive functions even it is just a 3.5 size embedded board. All functions and applications you need have almost integrated to the model. But it can still be expanded other function on it, which minimize your effort. On-board Type-III Mini PCI is right for you to have the quick and cheap expandable program.

Mini PCI is a standard expanded interface. The users can purchase Mini PCI easily from the retail market to go with wireless LAN, modem, capture card etc. It will upgrade largely the capability and efficiency for your application. The merits mentioned above have broken the stereotype that the compact size board lacks of the expansion possibility. We believe that GENE-6350 is exactly the perfect model for your choice.

1.2 Features

- Onboard Intel®Ultra Low Voltage Celeron®Processor
- Up to 24-bit TTL TFT LCD
- 10/100Mbps Fast Ethernet
- AC-97 3D surround 5.1 channel Audio
- Supports Type II CompactHash™ Memory
- 4 COM / 4 USB 2.0 / TV-out / Mini PCI / Digital I/O
- +5V only operation

1.3 Specifications

System

- CPU: Onboard Intel®Ultra Low Voltage Celeron®400 /650MHz Processor
- Memory: 200-pin DDR SODIMM x 1, Max. 512MB (DDR 266MHz)
- Chipset: VIA CLE 266 + VIA VT8235
- Ethernet: Realtek RTL8100BL, 10/100Base-Tx RJ-45 connector x 1
- BIOS: AWARD 256KB FLASH ROM
- Watchdog Timer: Generate a time-out system reset
- H/W Status Monitoring: Supports power supply voltages, and temperatures monitoring
- SSD: Type II CompactFlash slot x 1
- Expansion Interface: Type III Mini PCI socket x 1
- Battery: Lithium battery
- Power Supply Voltage: +5V. AT/ATX
- Board Size 5.75”(L) x 4”(W) (146mm x 101.6mm)
- Gross Weight: 0.88lb (0.4kg)
- Operating Temperature: 32 F~140 F (0 C~60 C)

Display

- Chipset: VIA CLE 266
- Memory size: Shared system memory up to 64 MB
- Resolutions: Up to 1280 X 1024 @ 32 bit colors for CRT;
Up to 1024 X 768 @ 24 bpp colors for LCD
- TV-Out: Support NTSC and PAL standard
Support CRT/LCD, CRT/TV, LCD/TV, CRT/DVI (Optional)
Simultaneous display
Support CRT/LCD, LCD/TV, LCD/DVI (optional) dual view (Win 98 / XP Only)
- DVI: Manufacturer option

I/O

- MIO: EIDE x 1(UDMA33 x 1), FDD x 1, KB x 1, Mouse x 1, RS-232 x 3, RS-232/422/485 x 1, Parallel x 1
- IrDA: One IrDA Tx/Rx header
- Audio: MIC in, Line in, Line out / Speaker
Out 5.1 output
- USB: Two 5 x 2 pin header support 4 USB 2.0 port

- Digital I/O Support 4 in and 4 out

Chapter

2

Quick Installation Guide

Notice:

The Quick Installation Guide is derived from Chapter 2 of user manual. For other chapters and further installation instructions, please refer to the user manual CD-ROM that came with the product.



2.1 Safety Precautions

Warning!

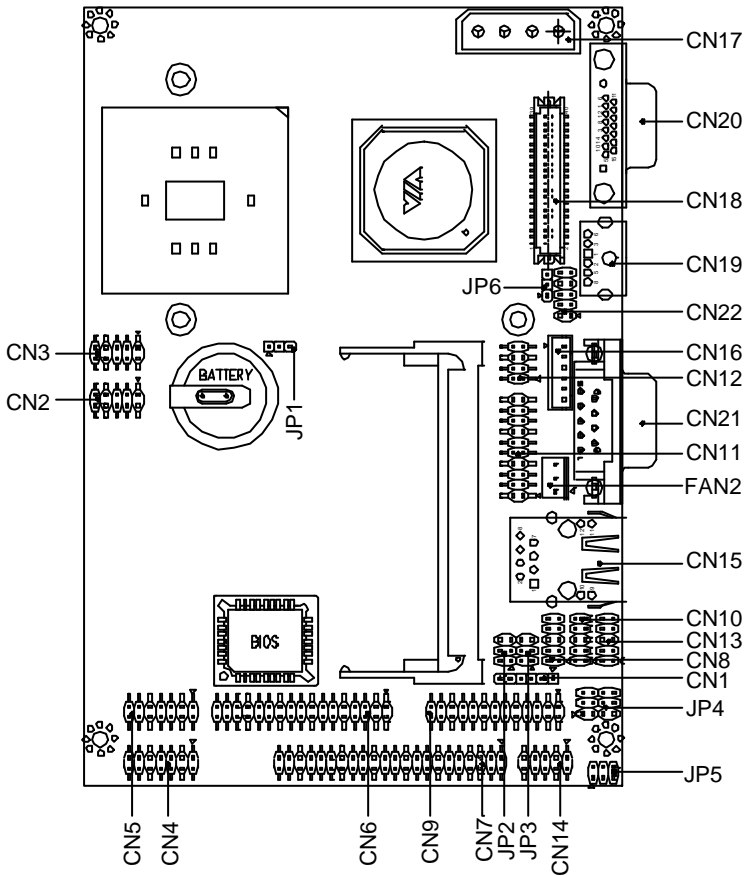
Always completely disconnect the power cord from your board whenever you are working on it. Do not make connections while the power is on, because a sudden rush of power can damage sensitive electronic components.

Caution!

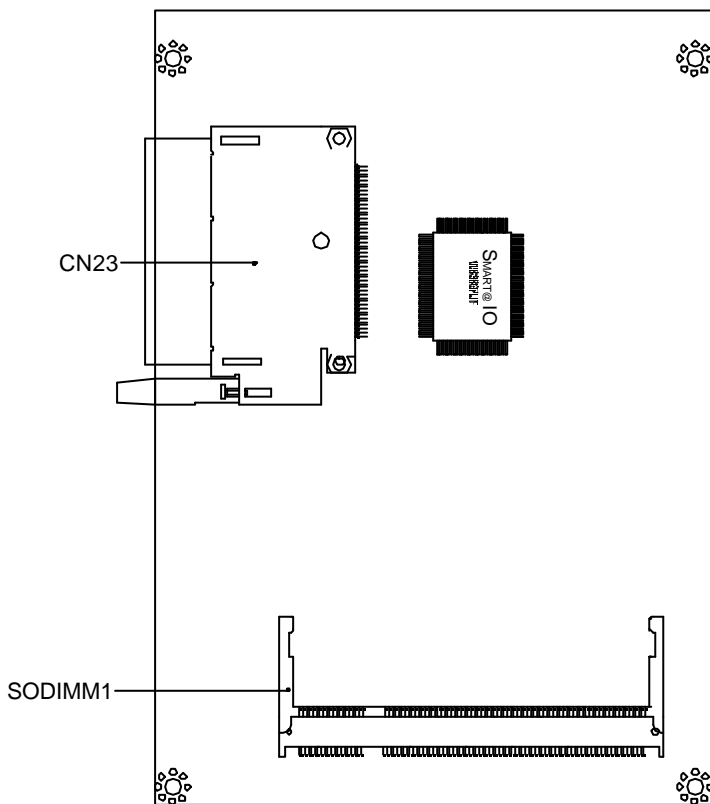
Always ground yourself to remove any static charge before touching the board. Modern electronic devices are very sensitive to static electric charges. Use a grounding wrist strap at all times. Place all electronic components on a static-dissipative surface or in a static-shielded bag when they are not in the chassis

2.2 Location of Connectors and Jumpers

Component Side

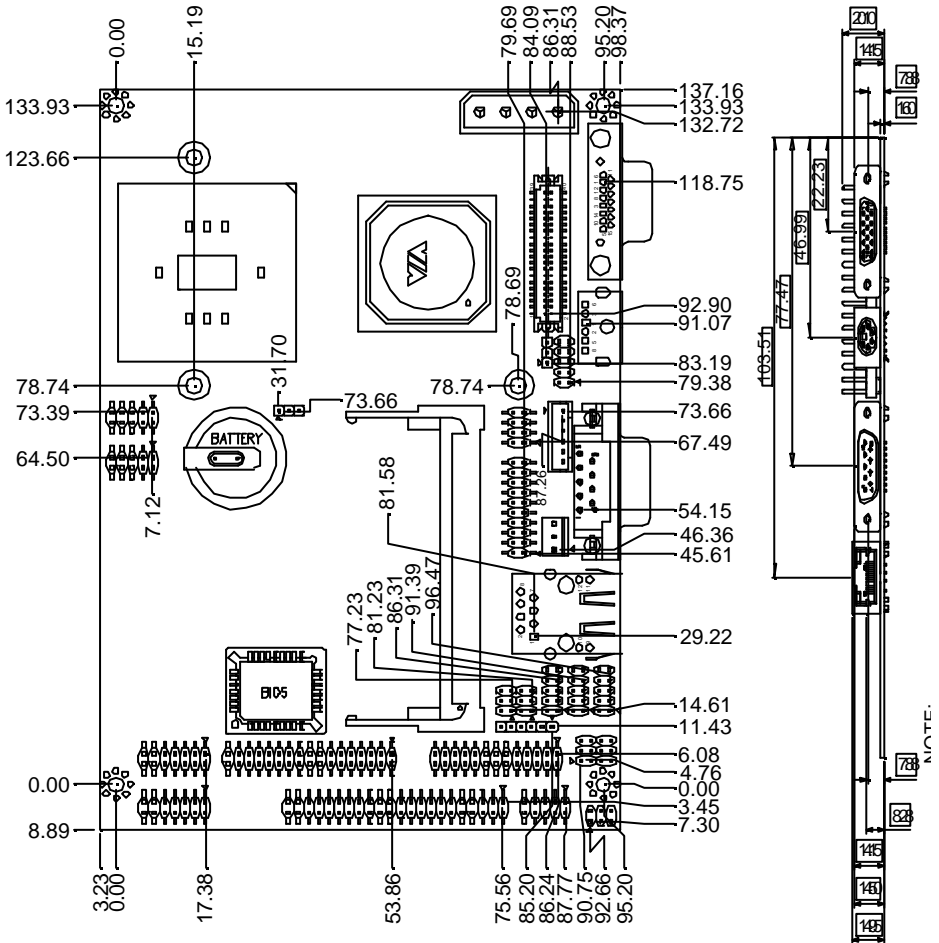


Solder Side



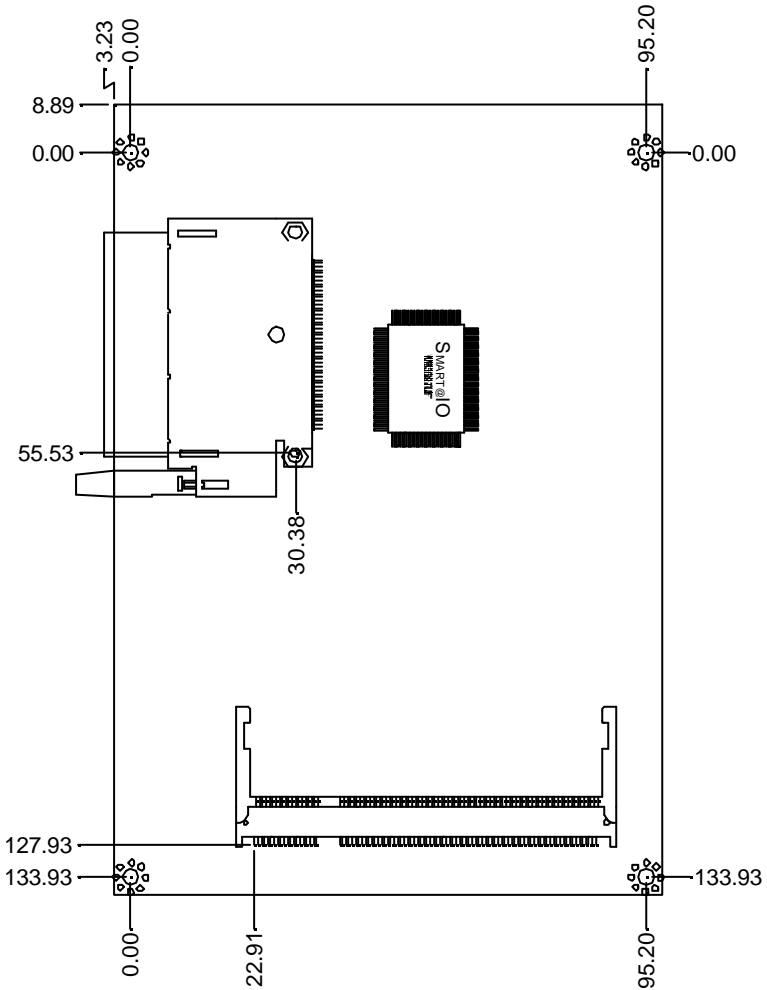
2.3 Mechanical Drawing

Component Side



NOTE:

Solder Side



2.4 List of Jumpers

The board has a number of jumpers that allow you to configure your system to suit your application.

The table below shows the function of each of the board's jumpers:

Jumpers

Label	Function
JP1	Clear CMOS
JP2	COM3 Ring/+5V/+12V Selection
JP3	COM4 Ring/+5V/+12V Selection
JP4	COM2 RS-232/422/485 Mode Selection – 1
JP5	COM2 RS-232/422/485 Mode Selection – 2
JP6	TTL-LCD Clock Selection

2.5 List of Connectors

The board has a number of connectors that allow you to configure your system to suit your application. The table below shows the function of each board's connectors:

Connectors

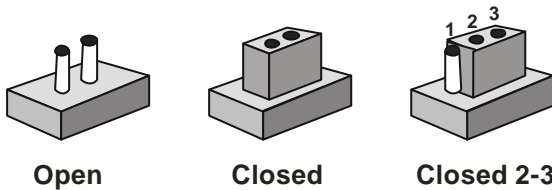
Label	Function
CN1	SIR Connector
CN2 (USB3, USB4)	USB Connector
CN3 (USB1, USB2)	USB Connector
CN4	Audio Input/Output Connector
CN5	Audio 5.1 Channel Connector
CN6	Floppy Drive Connector
CN7	Primary IDE Hard Drive Connector
CN8	Digital IO Connector
CN9	LPT Port Connector
CN10 (COM3)	RS-232 Serial Port Connector
CN11	DVI Connector
CN12	TV out Connector
CN13 (COM4)	RS-232 Serial Port Connector
CN14 (COM2)	RS-232/422/485 Serial Port Connector
CN15 (LAN)	Ethernet 10/100 Base-T RJ-45 Phone Jack
CN16	Option ATX Power Connector
CN17	Big 4 Pin Power Connector

CN18	TTL_LCD Connector
CN19	PS/2 Keyboard/ Mouse Connector
CN20	CRT Display Connector
CN21 (COM1)	RS-232 Serial Port Connector
CN22	Front Panel
CN23	CompactFlash Disk Connector
FAN2	System Fan Connector
MPCI1	MINIPCI Connector
SODIMM1	DDR SODIMM Connector

2.6 Setting Jumpers

You configure your card to match the needs of your application by setting jumpers. A jumper is the simplest kind of electric switch. It consists of two metal pins and a small metal clip (often protected by a plastic cover) that slides over the pins to connect them. To “close” a jumper you connect the pins with the clip.

To “open” a jumper you remove the clip. Sometimes a jumper will have three pins, labeled 1, 2 and 3. In this case you would connect either pins 1 and 2 or 2 and 3.



A pair of needle-nose pliers may be helpful when working with jumpers.

If you have any doubts about the best hardware configuration for your application, contact your local distributor or sales representative before you make any change.

Generally, you simply need a standard cable to make most connections.

2.7 Clear CMOS Selection (JP1)

JP1	Function
1-2	Protected (Default)
2-3	Clear

2.8 COM3 Ring/+5V/+12V Selection (JP2)

JP2	Function
1-2	+12V
3-4	+5V
5-6	Ring (Default)

2.9 COM4 Ring/+5V/+12V Selection (JP3)

JP3	Function
1-2	+12V
3-4	+5V
5-6	Ring (Default)

2.10 COM2 RS-232/422/485 Selection (JP4 & JP5)

JP4	JP5	Function
1-2, 4-5, 7-8, 10-11	1-2	RS-232 (Default)
2-3, 5-6, 8-9, 11-12	3-4	RS-422
2-3, 5-6, 8-9, 11-12	5-6	RS-485

2.11 TFT_LCD Clock Selection (JP6)

JP6	Function
1-2	CLK (Default)
2-3	Reverse CLK

2.12 SIR Connector (CN1)

Pin	Signal
1	+5V
2	N.C.
3	IRRX
4	GND
5	IRTX
6	N.C.

2.13 USB Connector (CN2)

Pin	Signal	Pin	Signal
1	+5V	2	GND
3	USBD2-	4	GND
5	USBD2+	6	USBD3+
7	GND	8	USBD3-
9	GND	10	+5V

2.14 USB Connector (CN3)

Pin	Signal	Pin	Signal
1	+5V	2	GND
3	USBD0-	4	GND
5	USBD0+	6	USBD1+
7	GND	8	USBD1-
9	GND	10	+5V

2.15 Audio Input/Output Connector (CN4)

Pin	Signal	Pin	Signal
1	MIC_in	2	MIC_Vcc
3	Audio Ground	4	CD_GND
5	LINE_in L	6	CD_L
7	LINE_in R	8	CD_GND
9	Audio Ground	10	CD_R
11	LINE_out L	12	LINE_out R
13	Audio Ground	14	Audio Ground

2.16 Audio 5.1 Channel Connector (CN5)

Pin	Signal	Pin	Signal
1	Front out R	2	Audio Ground
3	Front out L	4	Audio Ground
5	Surround out R	6	Audio Ground
7	Surround out L	8	Audio Ground
9	Low Frequency Effect out	10	Audio Ground
11	Center out	12	Audio Ground
13	S/PDIF out	14	S/PDIF in

2.17 Floppy Connector (CN6)

Pin	Signal	Pin	Signal
1	GND	2	#REDWC
3	GND	4	N.C.
5	GND	6	#DS1
7	GND	8	#INDEX
9	GND	10	#MOTOR A
11	GND	12	#DRIVE SELECT B
13	GND	14	#DRIVE SELECT A
15	GND	16	#MOTOR B
17	GND	18	#DIR
19	GND	20	#STEP
21	GND	22	#WRITE DATA
23	GND	24	#WRITE GATE
25	GND	26	#TRACK0
27	GND	28	#WRITE PROTECT
29	GND	30	#READ DATA

31	GND	32	#SIDE1
33	GND	34	#DISK CHANGE

2.18 Primary IDE Hard Drive Connector (CN7)

Pin	Signal	Pin	Signal
1	IDE RESET	2	GND
3	DATA7	4	DATA8
5	DATA6	6	DATA9
7	DATA5	8	DATA10
9	DATA4	10	DATA11
11	DATA3	12	DATA12
13	DATA2	14	DATA13
15	DATA1	16	DATA14
17	DATA0	18	DATA15
19	GND	20	N.C.
21	REQ	22	GND
23	IO WRITE	24	GND
25	IO READ	26	GND
27	IO READ	28	GND
29	DACK	30	GND
31	IRQ 14	32	N.C.
33	ADDR1	34	UDMA DETECT
35	ADDR0	36	ADDR2
37	CS#1	38	CS#3
39	LED	40	GND
41	+5V	42	+5V
43	GND	44	N.C.

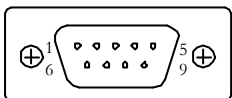
2.19 Digital IO Connector (CN8)

Pin	Signal	Pin	Signal
1	IN1	2	IN2
3	IN3	4	IN4
5	OUT1	6	OUT2
7	OUT3	8	OUT4
9	+5V	10	GND

2.20 LPT Port Connector (CN9)

Pin	Signal	Pin	Signal
1	#STROBE	14	#AFD
2	DATA0	15	#ERROR
3	DATA1	16	#INIT
4	DATA2	17	#SLIN
5	DATA3	18	GND
6	DATA4	19	GND
7	DATA5	20	GND
8	DATA6	21	GND
9	DATA7	22	GND
10	#ACK	23	GND
11	BUSY	24	GND
12	PE	25	GND
13	SELECT	26	N.C.

2.21 RS-232 Serial Port Connector (CN10, CN13 & CN21)



Pin	Signal	Pin	Signal
1	DCD	2	RXD
3	TXD	4	DTR
5	GND	6	DSR
7	RTS	8	CTS
9	RI	10	N.C.

2.22 DVI Connector (CN11)

Pin	Signal	Pin	Signal
1	DVI TX1+	2	DVI TX1-
3	GND	4	GND
5	DVI_TXCLK+	6	DVI_TXCLK-
7	GND	8	+5V
9	HPDET	10	+5V
11	DVI_TX2+	12	DVI_TX2-
13	GND	14	GND
15	DVI_TX0+	16	DVI_TX0-
17	N.C.	18	N.C.
19	SM_DAT	20	SM_CLK

2.23 TV out Connector (CN12)

Pin	Signal	Pin	Signal
1	Y	2	CVBS
3	GND	4	GND
5	C	6	N.C.

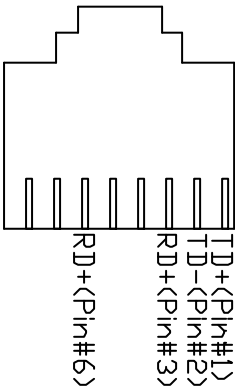
7 GND

8 N.C.

2.24 RS-232/422/485 Serial Port Connector (CN14)

Pin	Signal	Pin	Signal
1	DCD (422TXD-/485DATA-)	2	RXD (422RXD+)
3	TXD (422TXD+/485DATA+)	4	DTR (422RXD-)
5	GND	6	DSR
7	RTS	8	CTS
9	RI/+12V	10	N.C.

2.25 10/100 Base-T Ethernet Connector (CN15)



Pin	Signal	Pin	Signal
1	TX+	2	TX-
3	TCT	4	N.C.
5	N.C.	6	RCT
7	RX+	8	RX-
9	ACT_LED	10	+3.3V
11	LINK_LED	12	+3.3V

2.26 Option ATX Power Connector (CN16)

Pin	Signal
1	N.C.
2	GND
3	N.C.
4	GND
5	PS-ON
6	+5VSB

2.27 Big 4P Power Connector (CN17)

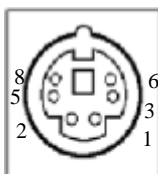
Pin	Signal
1	+5V
2	GND
3	GND
4	+12V

2.28 TTL_LCD Connector (CN18)

Pin	Signal	Pin	Signal
1	+5V	2	+5V
3	GND	4	GND
5	+3.3V	6	+3.3V
7	ENBKL	8	GND
9	B0	10	B1
11	B2	12	B3
13	B4	14	B5

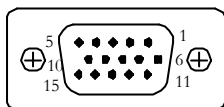
15	B6	16	B7
17	G0	18	G1
19	G2	20	G3
21	G4	22	G5
23	G6	24	G7
25	R0	26	R1
27	R2	28	R3
29	R4	30	R5
31	R6	32	R7
33	GND	34	GND
35	DOT_CLOCK	36	VSYNC
37	DE	38	HSYNC
39	N.C.	40	ENAVEE

2.29 PS/2 Keyboard / Mouse Connector (CN19)



Pin	Signal
8	MS_CLK
5	+5VSB
2	MS-DATA
1	KB_DATA
3	GND
6	KB_CLK

2.30 CRT Display Connector (CN20)



Pin	Signal	Pin	Signal
1	RED	2	GREEN
3	BLUE	4	N.C.
5	GND	6	GND
7	GND	8	GND
9	+5V	10	GND
11	N.C.	12	DDCDAT
13	HSYNC	14	VSYNC
15	DDCCLK	16	GND

2.31 Front Panel Connector (CN22)

Pin	Signal	Pin	Signal
1	Power On Button (-)	2	Power On Button (+)
3	IDE LED (-)	4	IDE LED (+)
5	External Buzzer (-)	6	External Buzzer (+)
7	Power LED (-)	8	Power LED (+)
9	Reset Switch (-)	10	Reset Switch (+)

2.32 CompactFlash Disk Connector (CN23)

Pin	Signal	Pin	Signal
1	GND	26	GND
2	DATA3	27	DATA11
3	DATA4	28	DATA12
4	DATA5	29	DATA13
5	DATA6	30	DATA14
6	DATA7	31	DATA15

7	CS#1	32	CS#3
8	GND	33	GND
9	GND	34	IO READ
10	GND	35	IO WRITE
11	GND	36	+5V
12	GND	37	IRQ15
13	+5V	38	+5V
14	GND	39	CSEL
15	GND	40	N.C.
16	GND	41	IDE RESET
17	GND	42	IO READY
18	ADDR2	43	N.C.
19	ADDR1	44	+5V
20	ADDR0	45	DASP
21	DATA0	46	DIAG
22	DATA1	47	DATA8
23	DATA2	48	DATA9
24	N.C.	49	DATA10
25	GND	50	GND

2.33 Fan Connector (Fan2)

Pin	Signal
1	Speed Sense
2	+5V
3	GND

Chapter

3

**Award
BIOS Setup**

3.1 System test and initialization

These routines test and initialize board hardware. If the routines encounter an error during the tests, you will either hear a few short beeps or see an error message on the screen. There are two kinds of errors: fatal and non-fatal. The system can usually continue the boot up sequence with non-fatal errors. Non-fatal error messages usually appear on the screen along with the following instructions:

Press <F1> to RESUME

Write down the message and press the F1 key to continue the boot up sequence.

System configuration verification

These routines check the current system configuration against the values stored in the CMOS memory. If they do not match, the program outputs an error message. You will then need to run the BIOS setup program to set the configuration information in memory.

There are three situations in which you will need to change the CMOS settings:

1. You are starting your system for the first time
2. You have changed the hardware attached to your system
3. The CMOS memory has lost power and the configuration information has been erased.

The GENE-6350 CMOS memory has an integral lithium battery backup for data retention. However, you will need to replace the complete unit when it finally runs down.

3.2 Award BIOS Setup

Awards BIOS ROM has a built-in Setup program that allows users to modify the basic system configuration. This type of information is stored in battery-backed CMOS RAM so that it retains the Setup information when the power is turned off.

Entering setup

Power on the computer and press immediately. This will allow you to enter Setup.

Main Menu

Use this menu for basic system configuration. (Date, time, IDE, etc.)

Advanced BIOS Features

Allow you to choose the VIRUS warning feature for IDE Hard Disk boot sector protection. If this function is enabled and someone attempt to write data into this area, BIOS will show a warning message on screen and alarm beep.

Advanced Chipset Features

DRAM timings, AGP functions etc.

Integrated Peripherals

Use this menu to specify your settings for integrated peripherals. (Onchip IDE device, Onchip PCI device, Super IO device, mouse etc.)

Power Management Setup

Use this menu to specify your settings for power management.

PnP/PCI Configurations

This entry appears if your system supports PnP/PCI.

PC Health Status

This menu shows you the status of PC.

Clk/Voltage Control

This menu shows you the display of Clock and Spread Spectrum Control.

Load Optimized Defaults

Use this menu to load the BIOS default values that are factory settings for optimal performance system operations. While AWARD has designated the custom BIOS to maximize performance, the factory has the right to change these defaults to meet their needs.

Set Password

Change / Set / Disable password.

Save and Exit Setup

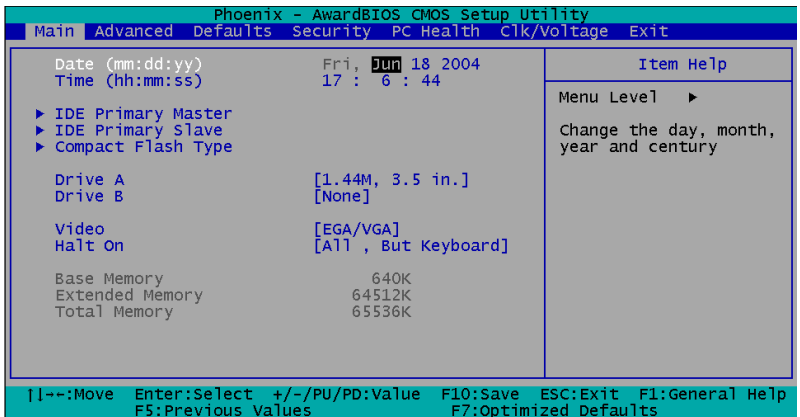
Save the changes you've made to CMOS and exit setup.

Exit Without Saving

Abandon all CMOS value changes and exit setup.

3.3 Main Menu

When you choose Main Menu, the screen shown below is displayed. This Main Menu allows users to configure system components such as date, time, hard disk drive, floppy drive and display. Once a field is highlighted, on-line help information is displayed in the right box of the Menu screen.



3.4 Advanced BIOS Features

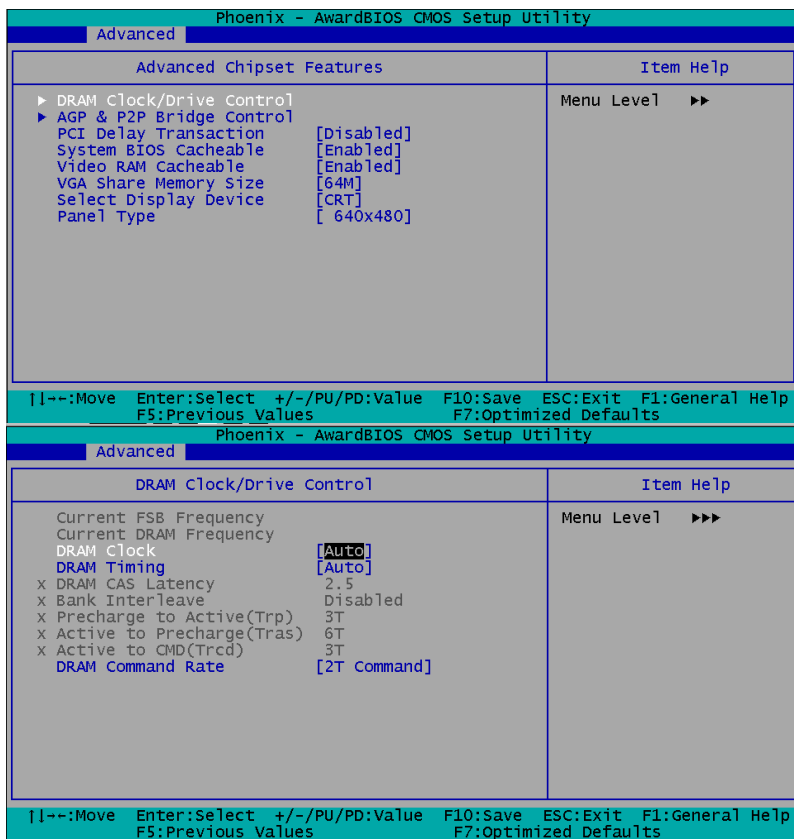
By choosing Advanced BIOS Features, the screen below is displayed. This sample screen contains the manufacturer's default values for the GENE-6350.

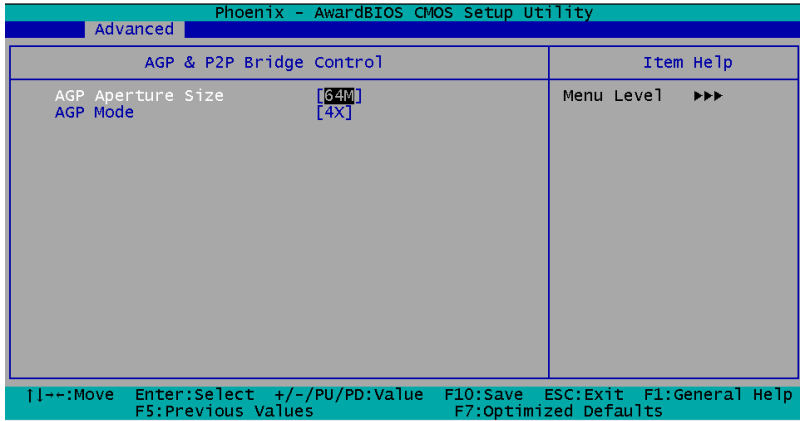
Phoenix - AwardBIOS CMOS Setup Utility			
Advanced		Item Help	
Advanced BIOS Features			
Virus Warning	[Disabled]	Menu Level ►► Allows you to choose the VIRUS warning feature for IDE Hard Disk boot sector protection. If this function is enabled and someone attempt to write data into this area , BIOS will show a warning message on screen and alarm beep	
CPU Internal Cache	[Enabled]		
External Cache	[Enabled]		
CPU L2 Cache ECC Checking	[Enabled]		
Quick Power On Self Test	[Enabled]		
First Boot Device	[Floppy]		
Second Boot Device	[HDD-0]		
Third Boot Device	[CDROM]		
Boot Other Device	[Enabled]		
Swap Floppy Drive	[Disabled]		
Boot Up Floppy Seek	[Enabled]		
Boot Up NumLock Status	[On]		
Gate A20 Option	[Fast]		
Typeomatic Rate Setting	[Disabled]		
x Typeomatic Rate (Chars/Sec)	6		
x Typeomatic Delay (Msec)	250		
Security Option	[Setup]		
MPS Version Control For OS	[1.4]		
OS Select For DRAM > 64MB	[Non-OS2]		
Video BIOS Shadow	[Enabled]		
Small Logo(EPA) Show	[Disabled]		
[↑↓←→]:Move Enter:Select +/-/PU/PD:Value F10:Save ESC:Exit F1:General Help F5:Previous Values F7:Optimized Defaults			

3.5 Advanced Chipset Features

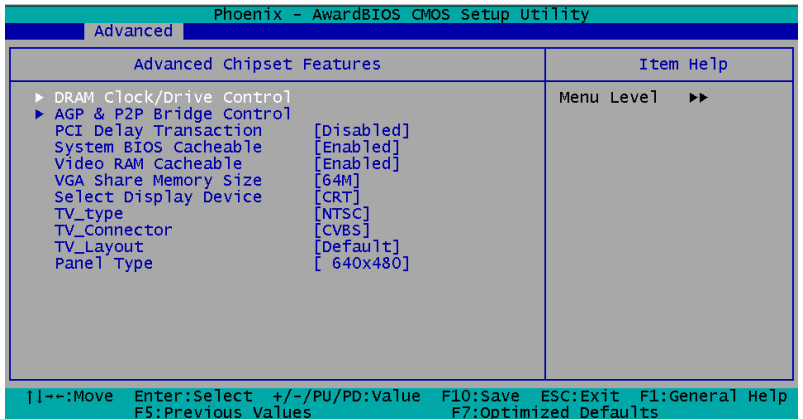
By choosing the Advanced Chipset Features, the screen below is displayed. This sample screen contains the manufacturer's default values for the GENE-6350.

For DVI support



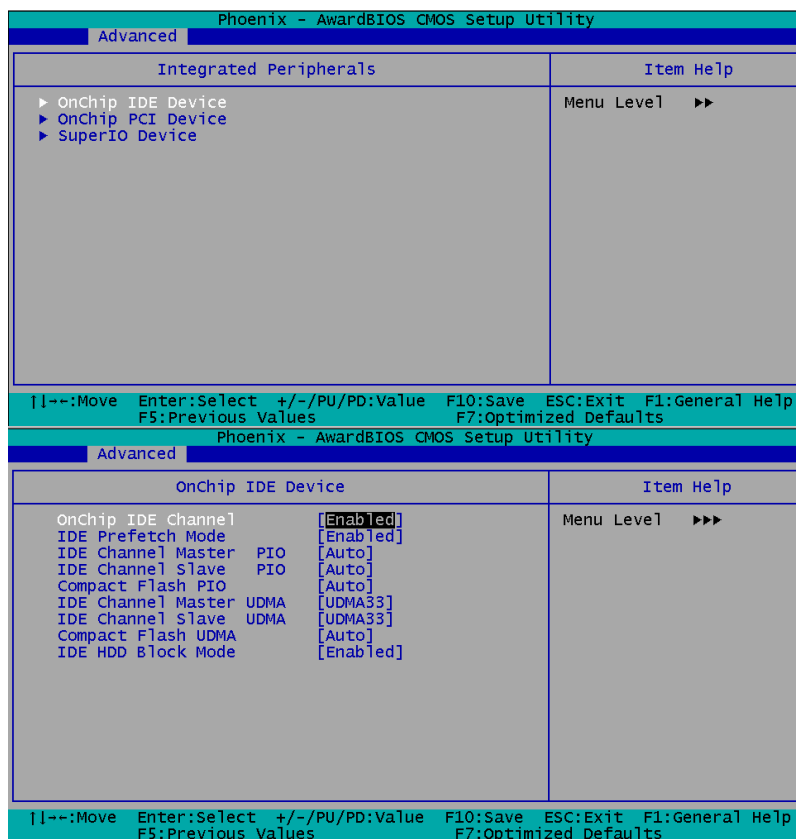


For TV-Out support



3.6 Integrated Peripherals

By choosing the Integrated, the screen below is displayed. This sample screen contains the manufacturer's default values for the GENE-6350.



Phoenix - AwardBIOS CMOS Setup Utility		
Advanced		
OnChip PCI Device		Item Help
Onboard Sound Device	[Enabled]	Menu Level >>>
Onboard Lan Device	[Enabled]	
Boot ROM function	[Disabled]	
OnChip USB Controller	[All Enabled]	
OnChip EHCI Controller	[Enabled]	
USB Device Function	[Enabled]	
USB Keyboard Support	[Enabled]	
USB Mouse Support	[Enabled]	
[]<<:Move Enter:Select +/-/PU/PD:Value F10:Save ESC:Exit F1:General Help F5:Previous Values F7:Optimized Defaults		
Phoenix - AwardBIOS CMOS Setup Utility		
Advanced		
SuperIO Device		Item Help
Onboard FDC Controller	[Enabled]	Menu Level >>>
Onboard Serial Port 1	[3F8/IRQ4]	
Onboard Serial Port 2	[2F8/IRQ3]	
Onboard Serial Port 3	[3E8/IRQ11]	
Onboard Serial Port 4	[2E8/IRQ10]	
UART Mode Select	[Normal]	
RxD , TxD Active	[Hi,Lo]	
IR Transmission Delay	[Enabled]	
UR2 Duplex Mode	[Half]	
Use IR Pins	[IR-Rx2Tx2]	
Onboard Parallel Port	[378/IRQ7]	
Parallel Port Mode	[SPP]	
EPP Mode Select	[EPP1.7]	
ECP Mode Use DMA	[3]	
[]<<:Move Enter:Select +/-/PU/PD:Value F10:Save ESC:Exit F1:General Help F5:Previous Values F7:Optimized Defaults		

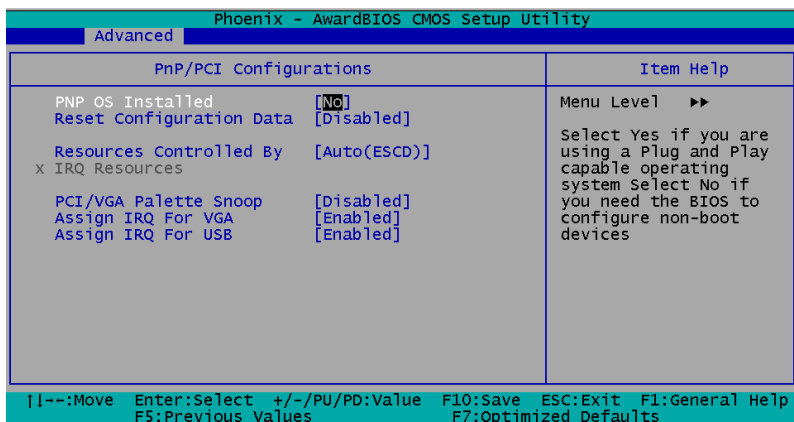
3.7 Power Management Setup

By choosing the Power Management Setup, the screen below is displayed. This sample screen contains the manufacturer's default values for the GENE-6350.

Phoenix - AwardBIOS CMOS Setup Utility	
Advanced	
Power Management Setup	Item Help
ACPI function	[Enabled]
Power Management Option	[User Define]
HDD Power Down	[Disable]
Suspend Mode	[Disable]
Video Off Option	[Suspend -> Off]
Video Off Method	[DPMS Support]
MODEM Use IRQ	[3]
Soft-Off by PWRBTN	[Instant-Off]
AC Loss Auto Restart	[Auto]
▶ IRQ/Event Activity Detect	
[Left Arrow]--:Move Enter:Select +/-/PU/PD:Value F10:Save ESC:Exit F1:General Help F5:Previous Values F7:Optimized Defaults	
Phoenix - AwardBIOS CMOS Setup Utility	
Advanced	
IRQ/Event Activity Detect	Item Help
PS2KB Wakeup Select	[Hot Key]
PS2KB Wakeup from S3/S4/S5	[Disable]
x Power Button Lock	Enabled
PS2MS Wakeup from S3/S4/S5	[Disabled]
VGA	[OFF]
LPT & COM	[LPT/COM]
HDD & FDD	[ON]
PCI Master	[OFF]
Wake up on LAN	[Disabled]
Modem Ring (Com 3,4 only)	[Disabled]
RTC Alarm Resume	[Disabled]
x Date (of Month)	0
x Resume Time (hh:mm:ss)	0 : 32 : 0
▶ IRQs Activity Monitoring	
[Left Arrow]--:Move Enter:Select +/-/PU/PD:Value F10:Save ESC:Exit F1:General Help F5:Previous Values F7:Optimized Defaults	

3.8 PnP/PCI configuration

By choosing the PnP/PCI configurations, the screen below is displayed. This sample screen contains the manufacturer's default values for the GENE-6350.



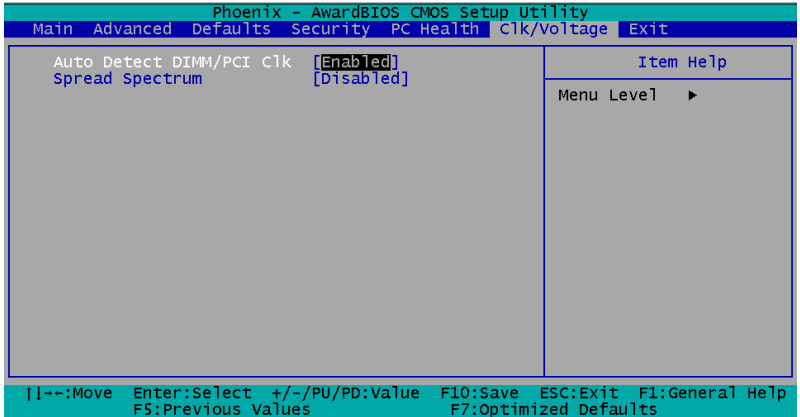
3.9 PC Health Status

By choosing the PC Health Status, the screen below is displayed. This sample screen contains the manufacturer's default values for the GENE-6350.

```
Phoenix - AwardBIOS CMOS Setup Utility
Main Advanced Defaults Security PC Health Clk/Voltage Exit
CPU Warning Temperature [Disabled] Item Help
Power on show status [Disabled]
Current CPU Temperature
Current System Temperature
Current System FAN Speed
Vcore
+ 1.25 V
+ 3.3 V
+ 5 V
Menu Level ▶
| | --:Move Enter:Select +/-/PU/PD:Value F10:Save ESC:Exit F1:General Help
F5:Previous Values F7:Optimized Defaults
```

3.10 Clk/Voltage control

By choosing the Clk/Voltage Control, the screen below is displayed. This sample screen contains the manufacturer's default values for the GENE-6350.

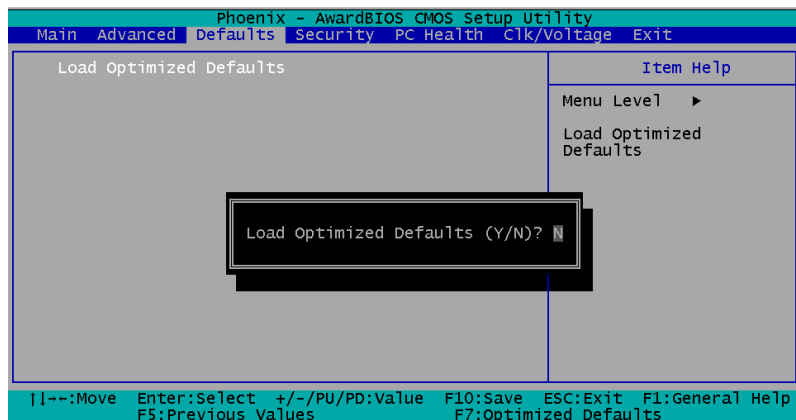


3.11 Load Optimized Defaults

When you press <Enter> on this item you get a confirmation dialog box:

Load Optimized Defaults (Y/N)?

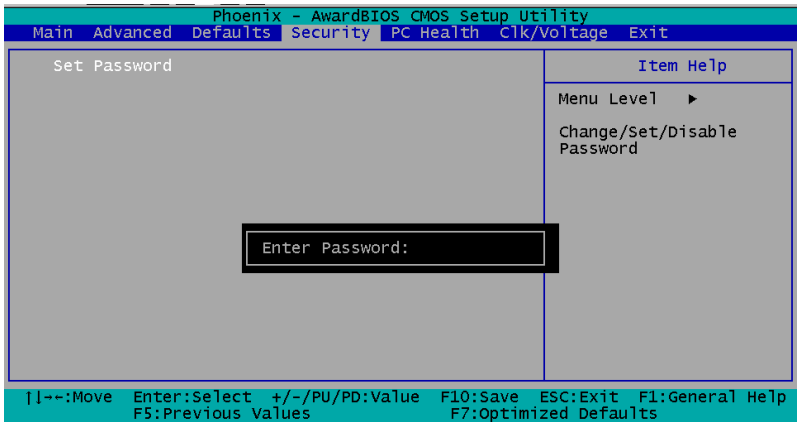
Pressing "Y" loads the default values that are manufacturer's settings for optimal performance system operations.



3.12 Set Password

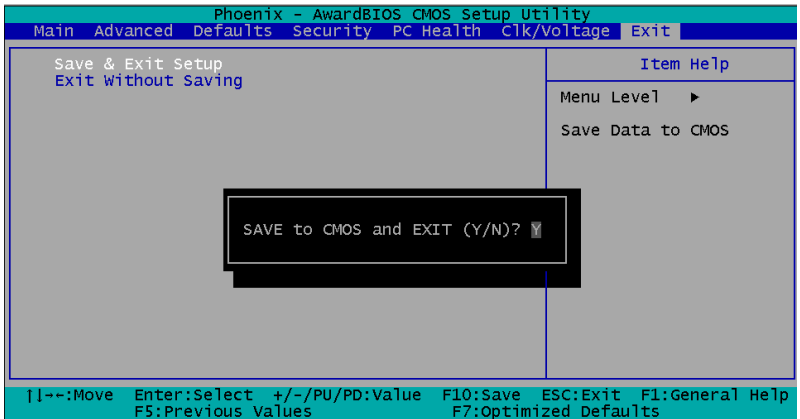
In the Security, there's a function for the users to set up the password. All you need to do is enter the password and then the system will ask you to confirm the password that you've typed to double check. Press ESC key if you want to exit the screen where you have been.

NOTE: To clear the password, simply press Enter when asked to enter a password. Then the password function is disabled.



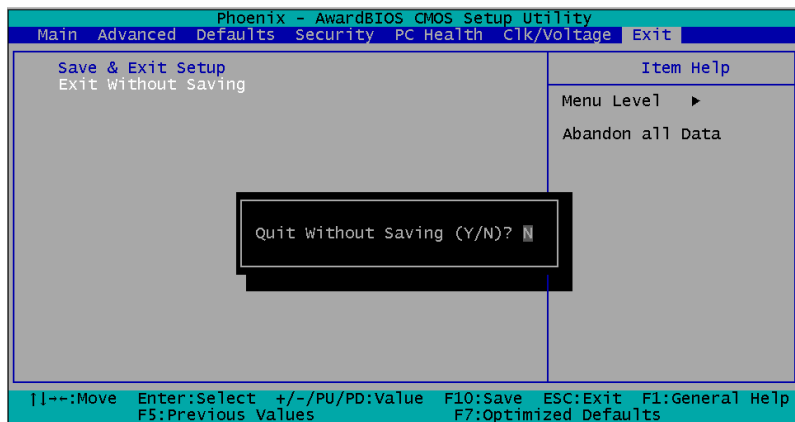
3.13 Save & Exit Setup

If you select this option and press <Enter>, the values entered in the setup utilities will be recorded in the chipset's CMOS memory. The microprocessor will check this every time you turn on your system and compare this to what it finds as it checks the system. This record is required for the system to operate.



3.14 Exit without saving

Selecting this option and pressing <Enter> allows you to exit the Setup program without recording any new value or changing old one.



Chapter

4

**Driver
Installation**

The GENE-6350 comes with a CD-ROM that contains all drivers and utilities that meet your needs.

Follow the sequence below to install the drivers:

Step 1 – Install VIA CLE266 Graphics for Win 98SE driver

VIA CLE266 Graphics for Win XP / 2000

Step 2 – Install Chipset Audio Driver for Win 98SE /XP / 2000

ALC650 codec Driver for Win 98SE / XP / 2000

Step 3 – Install USB 2.0 Driver for Win XP / 2000

Step 4 – Install Realtek RTL8100BL Driver for Win 98SE / XP /
2000

Remark

USB 2.0 Drivers are available for download using Windows Update for both Windows XP and Windows 2000. For additional information regarding USB 2.0 support in Windows XP and Windows 2000, please visit www.microsoft.com/hwdev/usb/.

Please read instructions below for further detailed installations.

4.1 Installation:

Insert the GENE-6350 CD-ROM into the CD-ROM Drive. And install the drivers from Step 1 to Step 4 in order.

Step 1 – Install VIA CLE266 Graphics for Win 98SE driver

VIA CLE266 Graphics for Win XP / 2000

1. Click on the **CLE266_98ME_160108_wIShld_logod**
OR CLE266_XP2K_16943209_wIShld_logod folder and then double click on the setup.exe.
2. Follow the instructions that the window will show you.
3. The system will help you install the driver automatically.
4. Please re-start your computer.

Step 2 – Install Chipset Audio Driver for Win 98SE /XP / 2000

ALC650 codec Driver for Win 98SE / XP / 2000

1. Click on the **ComboAudio_A1u390a** OR **Realtek AC97 ALC650** folder and then double click on the **setup.exe**.
2. Follow the instructions that the window will show you.
3. The system will help you install the driver automatically.
4. Please re-start your computer.

Step 3 – Install USB 2.0 Driver for Win XP / 2000

(See page 4-2 remark first)

1. Click on the **VIAUSB2V258-L-M** folder and then double click on the **setup.exe**.
2. Follow the instructions that the window will show you.
3. The system will help you install the driver automatically.

Step 4 – Install Realtek RTL8100BL Driver for Win 98SE / XP / 2000

1. Click on the **Windows 98_me_2000_xp** folder and then double click on the **setup.exe**.
2. Follow the instructions that the window will show you.
3. The system will help you install the driver automatically.

Appendix

A

**Programming the
Watchdog Timer**

A.1 Programming

GENE-6350 utilizes Winbond W83697UF chipset as its watchdog timer controller. Below are the procedures to complete its configuration and the AAEON initial watchdog timer program is also attached based on which you can develop customized program to fit your application.

WatchDog Timer Configuration Registers

Logical Device 8

CRF3--Select WDTO count mode

CRF4--Watch Dog Timer time-out value

CRF5—Watch Dog Timer status

CRF3 (PLED mode register. Default 0 x 00)

Bit Reserved

[7:3]:

Bit 2: select WDTO count mode.

0 second

1 minute

Bit [1:0]: select PLED mode

00 Power LED pin is tri-stated.

01 Power LED pin is droved low.

10 Power LED pin is a 1Hz toggle pulse with 50 duty cycle.

11 Power LED pin is a 1/4Hz toggle pulse with 50 duty cycle.

CF4 (Default 0 x 00)

Watchdog Timer Time-out value. Writing a non-zero value to this register causes the counter to load the value to watchdog counter and start counting down. Reading this register returns current value in watchdog counter instead of watchdog timer time-out value.

Bit [7:0]: = 0 x 00 Time-out Disable

= 0 x 01 Time-out occurs after 1 second/minute

= 0 x 02 Time-out occurs after 2 second/minutes

= 0 x 03 Time-out occurs after 3 second/minutes

.....

= 0 x FF Time-out occurs after 255 second/minutes

CF5 (Default 0 x 00)

Bit [7]: Reserved.

Bit [6]: invert Watchdog Timer Status

Bit 5: Force Watchdog Timer Time-out, Write only

- 1 Force Watchdog Timer Time-out event; this bit is self-clearing.

Bit 4: Watchdog Timer Status, R/W

- 1 Watchdog Timer Time-out occurred.
- 0 Watchdog Timer counting

Bit [3:0]: These bits select IRQ resource for Watchdog. Setting of 2 selects SMI.

A.2 W83697UF Watchdog Timer Initial Program

-----Enter W83697UF configuration mode

```
mov    al,87h    ;Unlock 83697UF register
out    4eh,al
out    4eh,al
```

-----Select Logic device 8(Watch dog device)

```
mov    al,07     ;logic device register
out    4eh,al
mov    al,8      ;logic device 8
out    4fh,al
```

-----Select CRF3 (Set unit to minute or second)

```
mov    al,0f3h
out    4eh,al
in     al,4fh
or     al,11111011b ;bit 2 :0-> second
                        ;    :1-> minute
                        ;Select second in this example
```

-----Select CRF4 (Set timeout value)

```
mov    al,0f4h
out    4eh,al
mov    al,0ah    ;10 seconds in this example
                        ;Set this value to 0 disable timeout
out    4fh,al
```

-----Exit configuration mode

```
mov    al,0aah
```

```
out    4eh,al
```

Appendix

B

I/O Information

B.1 I/O Address Map

Address	Description	User Address
000-01F	DMA Controller #1	000-000F
020-03F	Interrupt Controller #1, Master	020-021
040-05F	System Time	040-043
060-06F	8042 (Keyboard Controller)	060-064
070-07F	Real time Clock, NMI (non-maskable Interrupt) Mask	070-073
080-09F	DMA Page Register	080-08F
0A0-0BF	Interrupt Controller #2	0A0-0A1
0C0-0DF	DMA Controller #2	0C0-0DF
0F0-0FF	Math Coprpcessor	0F0-0FF
170-177	Secondary IDE Channel	170-177
1F0-1F7	Primary IDE Channel	1F0-1F7
2E8-2EF	Serial Port 4	2E8-2EF
2F8-2FF	Serial Port 2	2F8-2FF
378-37F	Parallel Printer Port 1	378-37F
3B0-3DF	EGA / VGA card	3B0-3DF
3E8-3EF	Serial Port 3	3E8-3EF
3F0-3F7	Diskette Controller	3F2-3F7
3F8-3FF	Serial Port 1	3F8-3FF

B.2 1st MB Memory Address Map

Memory Address	Description
00000-9FFFF	System memory
A0000-BFFFF	VGA buffer
C0000-CFFFF	VGA BIOS
E0000-FFFFFF	System BIOS

B.3 IRQ Mapping Chart

IRQ0	System Timer	IRQ8	System CMOS / Real time clock
IRQ1	Keyboard	IRQ9	Microsoft ACPI – Compliant system
IRQ2	Cascade to IRQ Controller	IRQ10	COM4
IRQ3	COM2	IRQ11	COM3
IRQ4	COM1	IRQ12	PS/2 mouse
IRQ5	Unused	IRQ13	FPU
IRQ6	Floppy Disk Controller	IRQ14	Primary IDE
IRQ7	Printer	IRQ15	Secondary IDE

B.4 DMA Channel Assignments

DMA Channel	Function
0	Available
1	Available
2	Standard Floppy Disk Controller
3	Available
4	Direct Memory Access Controller
5	Available
6	Available
7	Available