

ARES-WH10

Server Board

User's Manual 2nd Ed

Copyright Notice

This document is copyrighted, 2022. All rights are reserved. The original manufacturer reserves the right to make improvements to the products described in this manual at any time without notice.

No part of this manual may be reproduced, copied, translated, or transmitted in any form or by any means without the prior written permission of the original manufacturer. Information provided in this manual is intended to be accurate and reliable. However, the original manufacturer assumes no responsibility for its use, or for any infringements upon the rights of third parties that may result from its use.

The material in this document is for product information only and is subject to change without notice. While reasonable efforts have been made in the preparation of this document to assure its accuracy, AAEMON assumes no liabilities resulting from errors or omissions in this document, or from the use of the information contained herein.

AAEMON reserves the right to make changes in the product design without notice to its users.

Acknowledgement

All other products' name or trademarks are properties of their respective owners.

- Microsoft Windows is a registered trademark of Microsoft Corp.
- Intel, Pentium, Celeron, and Xeon are registered trademarks of Intel Corporation
- Core, Atom are trademarks of Intel Corporation
- ITE is a trademark of Integrated Technology Express, Inc.
- IBM, PC/AT, PS/2, and VGA are trademarks of International Business Machines Corporation.

All other product names or trademarks are properties of their respective owners.

Packing List

Before setting up your product, please make sure the following items have been shipped:

Item	Quantity
● ARES-WH10 server board	1
● CPU carrier	1
● I/O Cable	2
● I/O Shield	1

If any of these items are missing or damaged, please contact your distributor or sales representative immediately.

About this Document

This User's Manual contains all the essential information, such as detailed descriptions and explanations on the product's hardware and software features (if any), its specifications, dimensions, jumper/connector settings/definitions, and driver installation instructions (if any), to facilitate users in setting up their product.

Users may refer to the AAEON.com for the latest version of this document.

Safety Precautions

Please read the following safety instructions carefully. It is advised that you keep this manual for future references

1. All cautions and warnings on the device should be noted.
2. Make sure the power source matches the power rating of the device.
3. Position the power cord so that people cannot step on it. Do not place anything over the power cord.
4. Always completely disconnect the power before working on the system's hardware.
5. No connections should be made when the system is powered as a sudden rush of power may damage sensitive electronic components.
6. If the device is not to be used for a long time, disconnect it from the power supply to avoid damage by transient over-voltage.
7. Always disconnect this device from any AC supply before cleaning.
8. While cleaning, use a damp cloth instead of liquid or spray detergents.
9. Make sure the device is installed near a power outlet and is easily accessible.
10. Keep this device away from humidity.
11. Place the device on a solid surface during installation to prevent falls
12. Do not cover the openings on the device to ensure optimal heat dissipation.
13. Watch out for high temperatures when the system is running.
14. Do not touch the heat sink or heat spreader when the system is running
15. Never pour any liquid into the openings. This could cause fire or electric shock.
16. As most electronic components are sensitive to static electrical charge, be sure to ground yourself to prevent static charge when installing the internal components. Use a grounding wrist strap and contain all electronic components in any static-shielded containers.

17. If any of the following situations arises, please the contact our service personnel:
 - i. Damaged power cord or plug
 - ii. Liquid intrusion to the device
 - iii. Exposure to moisture
 - iv. Device is not working as expected or in a manner as described in this manual
 - v. The device is dropped or damaged
 - vi. Any obvious signs of damage displayed on the device
18. **DO NOT LEAVE THIS DEVICE IN AN UNCONTROLLED ENVIRONMENT WITH TEMPERATURES BEYOND THE DEVICE'S PERMITTED STORAGE TEMPERATURES (SEE CHAPTER 1) TO PREVENT DAMAGE.**

Warning!



This device complies with Part 15 FCC Rules. Operation is subject to the following two conditions: (1) this device may not cause harmful interference, and (2) this device must accept any interference received including interference that may cause undesired operation.

Caution:

There is a danger of explosion if the battery is incorrectly replaced. Replace only with the same or equivalent type recommended by the manufacturer. Dispose of used batteries according to the manufacturer's instructions and your local government's recycling or disposal directives.

Attention:

Il y a un risque d'explosion si la batterie est remplacée de façon incorrecte. Ne la remplacer qu'avec le même modèle ou équivalent recommandé par le constructeur. Recycler les batteries usées en accord avec les instructions du fabricant et les directives gouvernementales de recyclage.

China RoHS Requirements (CN)

产品中有毒有害物质或元素名称及含量

AAEON Main Board/ Daughter Board/ Backplane

部件名称	有毒有害物质或元素					
	铅 (Pb)	汞 (Hg)	镉 (Cd)	六价铬 (Cr(VI))	多溴联苯 (PBB)	多溴二苯醚 (PBDE)
印刷电路板 及其电子组件	○	○	○	○	○	○
外部信号 连接器及线材	○	○	○	○	○	○
<p>○: 表示该有毒有害物质在该部件所有均质材料中的含量均在 SJ/T 11363-2006 标准规定的限量要求以下。</p> <p>X: 表示该有毒有害物质至少在该部件的某一均质材料中的含量超出 SJ/T 11363-2006 标准规定的限量要求。</p> <p>备注: 此产品所标示之环保使用期限, 系指在一般正常使用状况下。</p>						

China RoHS Requirement (EN)

Poisonous or Hazardous Substances or Elements in Products

AAEON Main Board/ Daughter Board/ Backplane

Component	Poisonous or Hazardous Substances or Elements					
	Lead (Pb)	Mercury (Hg)	Cadmium (Cd)	Hexavalent Chromium (Cr(VI))	Polybrominated Biphenyls (PBB)	Polybrominated Diphenyl Ethers (PBDE)
PCB & Other Components	○	○	○	○	○	○
Wires & Connectors for External Connections	○	○	○	○	○	○
<p>O: The quantity of poisonous or hazardous substances or elements found in each of the component's parts is below the SJ/T 11363-2006-stipulated requirement.</p> <p>X: The quantity of poisonous or hazardous substances or elements found in at least one of the component's parts is beyond the SJ/T 11363-2006-stipulated requirement.</p> <p>Note: The Environment Friendly Use Period as labeled on this product is applicable under normal usage only</p>						

Table of Contents

Chapter 1 - Product Specifications	1
1.1 Specifications	2
Chapter 2 – Hardware Information	4
2.1 Dimensions	5
2.2 Jumpers and Connectors	7
2.3 List of Jumpers	8
2.3.1 RTC Reset (CMOS1).....	8
2.3.2 Auto PWRBTN Selection (JP1)	8
2.3.3 ME Recover (JP2)	8
2.4 List of Connectors	9
2.4.1 Digital I/O: 2.0mm Pin Header 2x5P (DIO1)	10
2.4.2 USB2.0: 2.0mm Box Header 2x10P (CN5)	10
2.4.3 Front Panel Pin Header (FP1)	11
2.4.4 Case Open (CN9).....	12
Chapter 3 - AMI BIOS Setup	13
3.1 System Test and Initialization	14
3.2 AMI BIOS Setup	15
3.3 Setup submenu: Main	16
3.4 Setup submenu: Advanced.....	17
3.4.1 Advanced: Trusted Computing	18
3.4.2 Advanced: Hardware Monitor	21
3.4.3 Advanced: SIO Configuration.....	23
3.4.3.1 SIO Configuration: Serial Port Configuration	24
3.4.4 Advanced: PCI Subsystem Settings.....	25
3.4.5 Advanced: Serial Port Console Configuration	26
3.4.5.1 Serial Port Console Configuration: COM0 Console Redirection	

	Settings.....	27
3.4.5.2	Serial Port Console Configuration: Legacy Console Redirection Settings.....	30
3.4.5.3	Serial Port Console Configuration: Console Redirection EMS Settings.....	32
3.4.6	Advanced: NVMe Configuration	34
3.4.7	Advanced: Power Management	35
3.4.8	Advanced: Digital IO Port Configuration	37
3.4.9	Advanced: Case Open Configuration.....	39
3.5	Setup submenu: Platform Configuration	40
3.5.1	Platform Configuration: PCH Configuration	41
3.5.1.1	PCH Configuration: PCH SATA Configuration.....	42
3.5.1.2	PCH Configuration: PCH sSATA Configuration.....	43
3.5.2	Platform Configuration: Server ME Configuration.....	44
3.6	Setup submenu: Socket Configuration.....	45
3.6.1	Socket Configuration: Processor Configuration	46
3.6.2	Socket Configuration: Memory Configuration	47
3.6.2.1	Memory Configuration: Memory Topology	48
3.6.3	Socket Configuration: IIO Configuration.....	49
3.6.4	Socket Configuration: Intel® VT for Directed I/O (VT-d)	50
3.6.5	Socket Configuration: Advanced Power Management Configuration .51	
3.6.5.1	Advanced Power Management Configuration: CPU C State Control	52
3.7	Setup submenu: Security.....	53
3.7.1	Security: Secure Boot	55
3.7.1.1	Secure Boot: Key Management	57
3.8	Setup submenu: Boot	59
3.9	Setup submenu: Save & Exit.....	60

Chapter 4 – Driver Installation 61

 4.1 Driver Download/Installation 62

Chapter 1

Product Specifications

1.1 Specifications

System

Form Factor	ATX Sever Board Whitely Platform
Processor	Single Intel® Xeon® ICE LAKE-SP Processors
System Memory	6 x DDR4 2666 MHz RDIMM Slot
Chipset	Intel® C621A
Ethernet	Intel® i210 Gigabit Ethernet x 2
COM	RS-232 x 1
BIOS	AMI BIOS
Serial ATA	SATA II port x 8, support RAID 0, 1, 5,10
Audio and VGA	1
Expansion Interface	PCIe 3.0[x16] x 3, PCIe 3.0[x4] x 3(use PCIe[x8] slot), PCIe 3.0[x8] x 1
Watchdog Timer	1~255 steps by software programming
RTC	Internal RTC
System Fan	5x 4-pin fan headers (up to 5 fans)
Front I/O Panel	N/A
Rear I/O Panel	USB 3.0 x 6, 1 Gb RJ45 LAN x 2, Audio in x 1, Audio out x 1, RS-232 x 1, VGA x 1
Color	N/A
Power Supply	
Dimension	305 × 244 mm
Power Consumption	TBD
MTBF (Hours)	TBD

Display

Chipset	Intel C621A
Graphic Engine	TBD
Resolution	TBD
Connector	VGA

I/O

Serial Port	RS-232 x 1
K/B and Mouse	N/A
USB	USB 3.0 x 6

Environmental

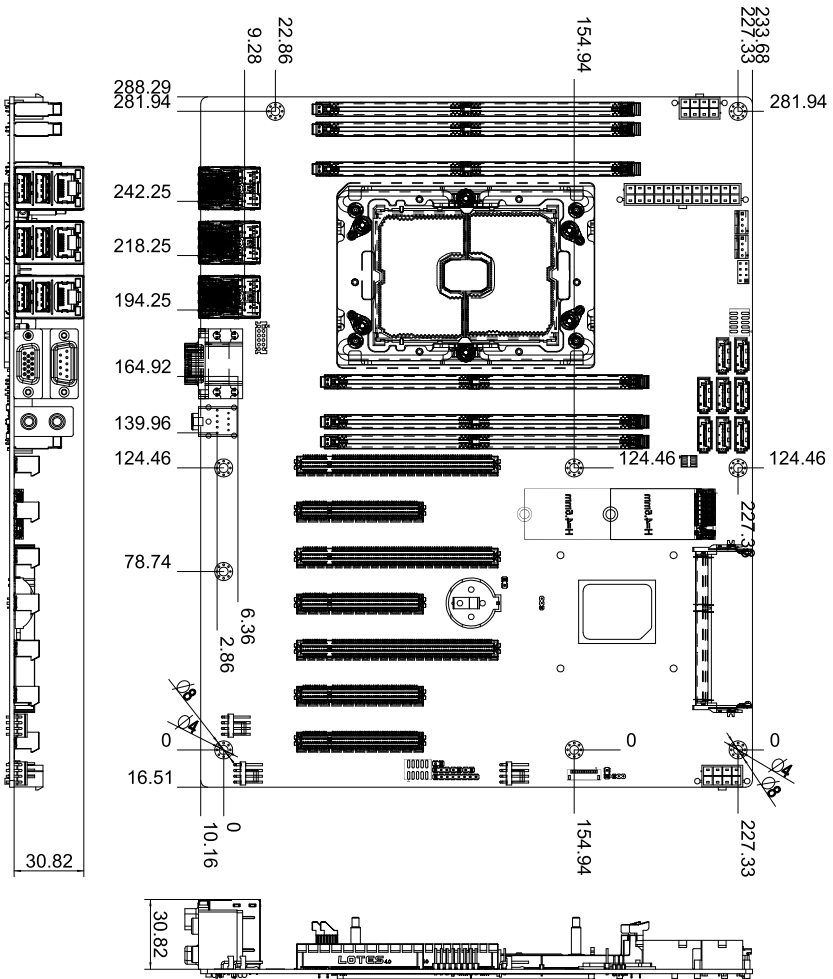
Operating Temperature	0°C ~ 60°C (32°F ~ 140°F)
Storage Temperature	-4°F ~ 140°F (-20°C ~ 60°C)
Operating Humidity	10%~80% relative humidity, non-condensing
Storage Humidity	10%~80% @40°C; non-condensing

Chapter 2

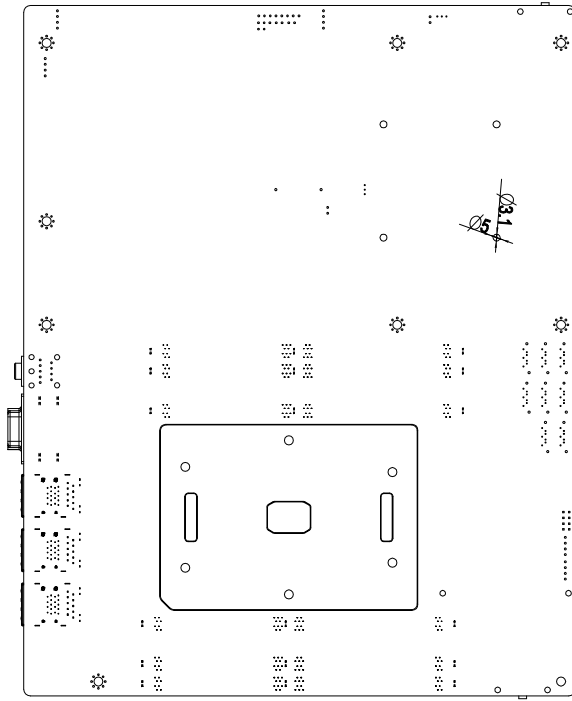
Hardware Information

2.1 Dimensions

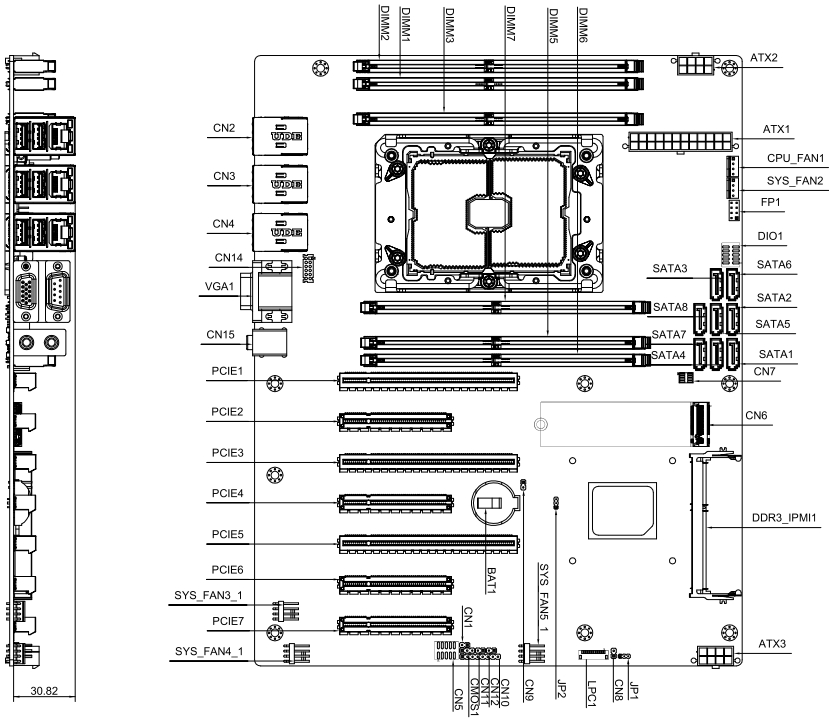
Component Side



Solder Side



2.2 Jumpers and Connectors



Note:

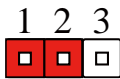
- For a fully configured system, we recommend that you use a power supply unit (PSU) that complies with ATX 12V Specification 2.0 (or later version) and provides a minimum power of 500W.
- We recommend that you use a PSU with a higher power output when configuring a system with more power-consuming devices. The system may become unstable or may not boot up if the power is inadequate.
- If you want to use two or more high-end PCIe x16 cards please connect ATX3, and use a PSU with 1000W power or above to ensure the system stability.

2.3 List of Jumpers

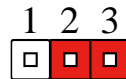
Please refer to the table below for all of the board's jumpers that you can configure for your application

Label	Function
CMOS1	RTC Reset
JP1	Auto Power Button
JP2	ME Recover

2.3.1 RTC Reset (CMOS1)

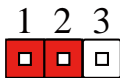


Normal

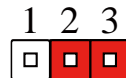


Clear CMOS

2.3.2 Auto PWRBTN Selection (JP1)

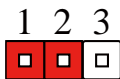


Normal

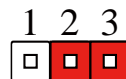


Auto PWRBTN

2.3.3 ME Recover (JP2)



Normal



ME Recover

2.4 List of Connectors

Please refer to the table below for all of the board's connectors that you can configure for your application

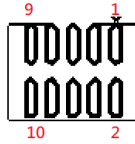
Label	Function
DIO1	Digital I/O
CN5	USB2.0 Port
FP1	Front Panel Pin Header
CPU_FAN1/2	CPU_FAN1
SYS_FAN3~5	CPU_FAN2
CN6	M.2 Key-M 2280
SATA1 ~ SATA8	SATA Port Connector
ATX1	24-Pin ATX Power Connector
ATX2/ATX3	8-Pin 12V Power Connector
PCIE1~PCIE7	Standard PCIe slot
DDR3_IPMI1 ^{Note 2}	IPMI Connector (AAEON IPMI only)
CN4	IPMI LAN only
CN14 ^{Note 2}	IPMI LAN Internal Connector.
CN2/CN3	USB3.0+LAN Connector
VGA1	VGA+COM Connector
CN15	Audio Connector
U211	LGA4189 Whitley CPU
DIMM1~8	DDR4 Slot
CN9	Case Open

Note 1: CN1/CN5/CN7/CN8/CN10/CN11/CN12/LPC1 are for Debug.

Note 2: CN14 & DDR3 are for future AAEON IPMI and only available on a project basis.

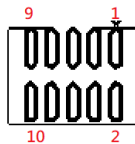
Note 3: PCIE2, PCIE4, PCIE6 are PCIe slots with x4 lanes. PCIE6 connects to PCH.

2.4.1 Digital I/O: 2.0mm Pin Header 2x5P (DIO1)



Pin	Signal	Signal Type
1	DIO0	Input / Output
2	DIO1	Input / Output
3	DIO2	Input / Output
4	DIO3	Input / Output
5	DIO4	Input / Output
6	DIO5	Input / Output
7	DIO6	Input / Output
8	DIO7	Input / Output
9	+3.3V	PWR
10	GND	GND

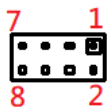
2.4.2 USB2.0: 2.0mm Box Header 2x10P (CN5)



Pin	Signal	Signal Type
1	+5V_USB	PWR
2	GND	GND
3	USBP_1N	DIFF
4	GND	GND

Pin	Signal	Signal Type
5	USBP_1P	DIFF
6	USBP_2P	DIFF
7	GND	GND
8	USBP_2N	DIFF
9	GND	GND
10	+5V_USB	PWR

2.4.3 Front Panel Pin Header (FP1)



Pin	Signal	Signal Type
1	Power On Button(+)	Input
2	Reset Switch (+)	Input
3	Power On Button(-)	GND
4	Reset Switch (-)	GND
5	HDD LED (+)	Output
6	Power LED(+)	POWER
7	HDD LED (-)	Output
8	Power LED(-)	GND

2.4.4 Case Open (CN9)

1


Pin	Signal	Signal Type
1	CASEOPEN#	Input
2	GND	GND

Chapter 3

AMI BIOS Setup

3.1 System Test and Initialization

The board uses certain routines to perform testing and initialization. If an error, fatal or non-fatal, is encountered, a few short beeps or an error message will be outputted. The board can usually continue the boot up sequence with non-fatal errors.

The system configuration verification routines check the current system configuration against the values stored in the CMOS memory. If they do not match, an error message will be outputted, in which case you will need to run the BIOS setup program to set the configuration information in memory.

There are three situations in which you will need to change the CMOS settings:

- You are starting your system for the first time
- You have changed your system's hardware
- The CMOS memory has lost power and the configuration information is erased

The system's CMOS memory uses a backup battery for data retention, which is to be replaced once emptied.

3.2 AMI BIOS Setup

The AMI BIOS ROM has a pre-installed Setup program that allows users to modify basic system configurations, which is stored in the battery-backed CMOS RAM and BIOS NVRAM so that the information is retained when the power is turned off.

To enter BIOS Setup, press or <F2> immediately while your computer is powering up.

The function for each interface can be found below.

Main – Date and time can be set here. Press <Tab> to switch between date elements

Advanced – Enable/ Disable boot option for legacy network devices

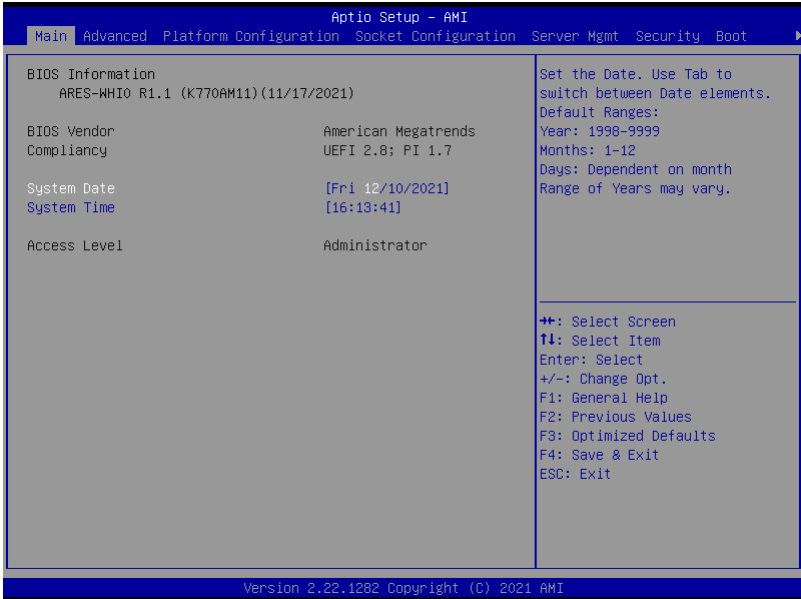
Chipset – For hosting bridge parameters

Boot – Enable/ Disable quiet Boot Option

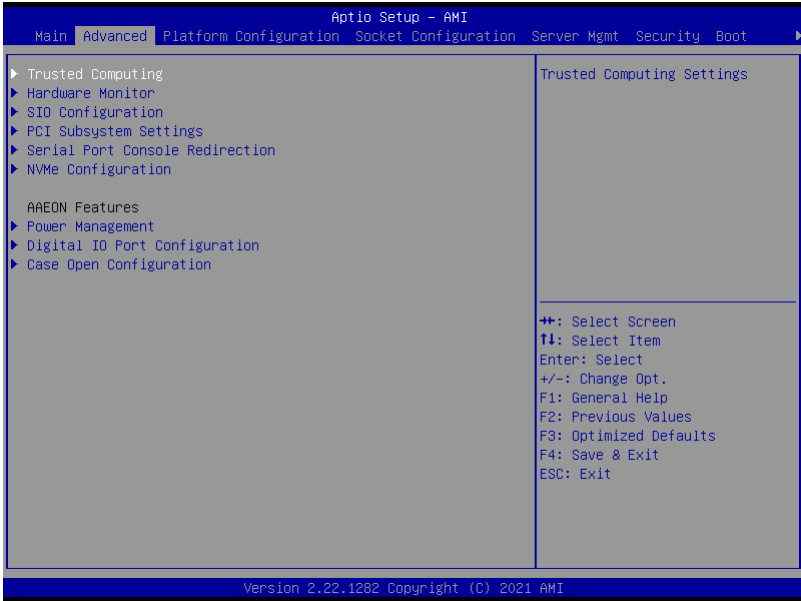
Security – The setup administrator password can be set here

Save & Exit – Save your changes and exit the program

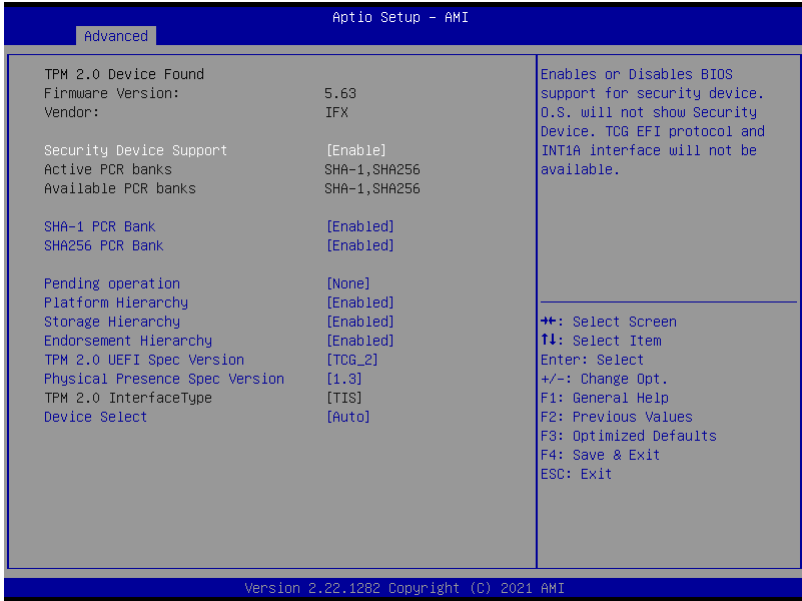
3.3 Setup submenu: Main



3.4 Setup submenu: Advanced



3.4.1 Advanced: Trusted Computing



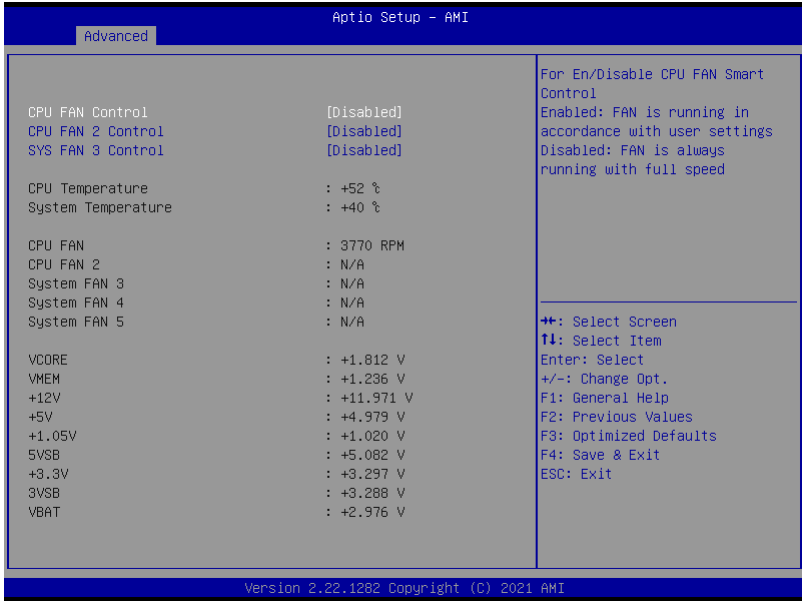
Options summary:

Security Deice	Enable	Optimal Default, Failsafe Default
Support	Disable	
Enables or Disables BIOS support for security device. O.S. will not show Security Device. TCG EFI protocol and INT1A interface will not be available.		
SHA-1 PCR Bank	Disabled	
	Enabled	Optimal Default, Failsafe Default
Enable or Disable SHA-1 PCR Bank		
SHA256 PCR Bank	Disabled	
	Enabled	Optimal Default, Failsafe Default
Enable or Disable SHA256 PCR Bank.		

Pending operation	None	Optimal Default, Failsafe Default
	TPM Clear	
Schedule an Operation for the Security Device. NOTE: Your Computer will reboot during restart in order to change State of Security Device.		
Platform Hierarchy	Enabled	Optimal Default, Failsafe Default
	Disabled	
Enable or Disable Platform Hierarchy		
Storage Hierarchy	Enabled	Optimal Default, Failsafe Default
	Disabled	
Enable or Disable Storage Hierarchy		
Endorsement Hierarchy	Enabled	Optimal Default, Failsafe Default
	Disabled	
Enable or Disable Endorsement Hierarchy		
TPM 2.0 UEFI Spec Version	TCG_2	Optimal Default, Failsafe Default
	TCG_1_2	
Select the TCH2 Spec Version Support. TCG_1_2: the Compatible mode for Win8/Win10 TCG_2: Support new TCG2 protocol and event format for Win10 or later		
Physical Presence Spec Version	1.3	Optimal Default, Failsafe Default
	1.2	
Select to Tell O.S. to support PPI Spec Version 1.2 or 1.3. Note some HCK tests might not support 1.3		
Device Select	Auto	Optimal Default, Failsafe Default
	TPM 1.2	
	TPM 2.0	

TPM 1.2 will restrict support to TPM 1.2 devices, TPM 2.0 will restrict support to TPM 2.0 devices, Auto will support both with the default set to TPM 2.0 devices if not found, TPM 1.2 devices will be enumerated.

3.4.2 Advanced: Hardware Monitor

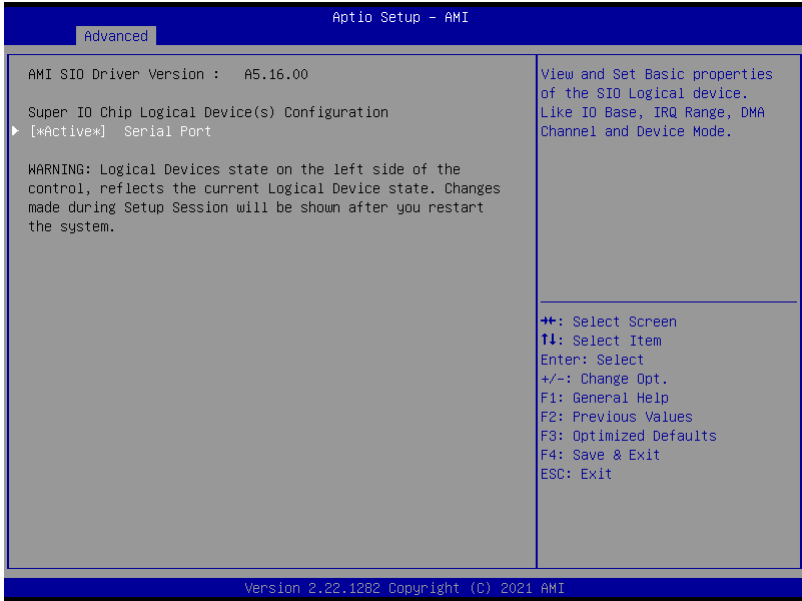


Options summary:

CPU FAN / CPU	Disabled	Optimal Default, Failsafe Default
FAN 2 / SYS FAN 3 Control	Enabled	
For En/Disable CPU FAN / CPU FAN 2 / SYS FAN 3 Smart Control		
Enabled: FAN is running in accordance with user settings		
Disabled: FAN is always running with full speed		
FAN Control Mode	Manual Mode	Optimal Default, Failsafe Default
	Automatic Mode	
Manual Mode: Depends on PWM Duty		
Automatic Mode: FAN Speed is depends on CPU Temperature		

PWM Duty	200	Optimal Default, Failsafe Default
Manual Mode: PWM Duty value Range:[0 - 255]		
Spin PWM	100	Optimal Default, Failsafe Default
The PWM Duty of FAN Spin Range:[0 - 255]		
Off Control Temperature	30	Optimal Default, Failsafe Default
Temperature Limit Value of Fan Off Note: Some fans have the minimum speed even if the PWM value is 0		
Start Control Temperature	50	Optimal Default, Failsafe Default
Temperature Limit Value of FAN Start Control		
Full Speed Temperature	80	Optimal Default, Failsafe Default
Temperature Limit Value of FAN Full Speed		
PWM Slope	5	Optimal Default, Failsafe Default
Slope PWM value/Degree C for FAN Speed Control Range:[1-15]		

3.4.3 Advanced: SIO Configuration



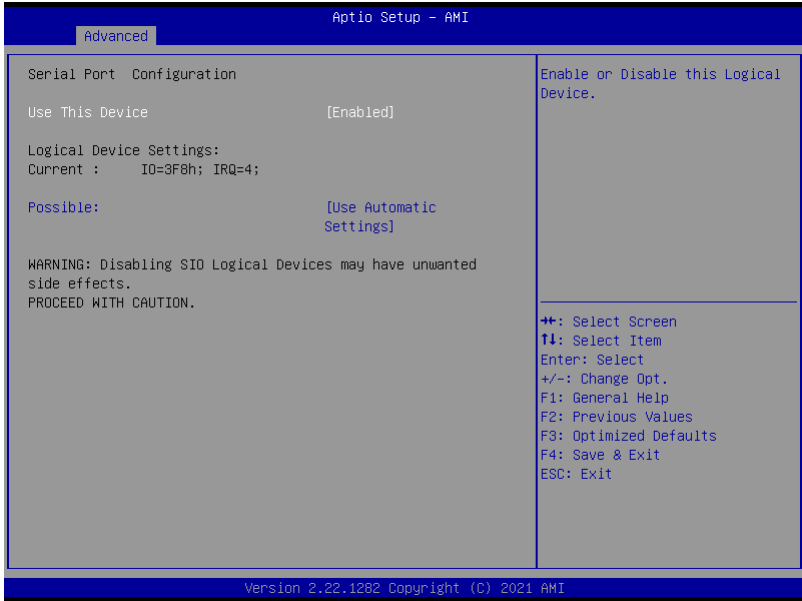
Options summary:

Serial Port

View and Set Basic properties of the SIO Logical device.

Like IO Base, IRQ Range, DMA Channel and Device Mode.

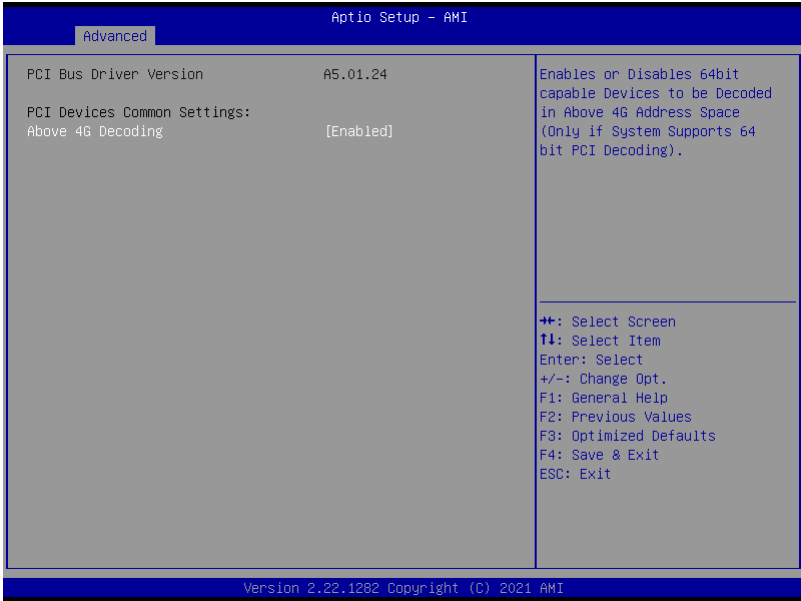
3.4.3.1 SIO Configuration: Serial Port Configuration



Options summary:

Use This Device	Enabled	Optimal Default, Failsafe Default
	Disabled	
Enable or Disable this Logical Device.		
Possible	Use Automatic Settings	Optimal Default, Failsafe Default
	IO=3F8h; IRQ=4;	
	IO=2F8h; IRQ=3;	
Allows the user to change the device resource settings. New settings will be reflected on this setup page after system restarts.		

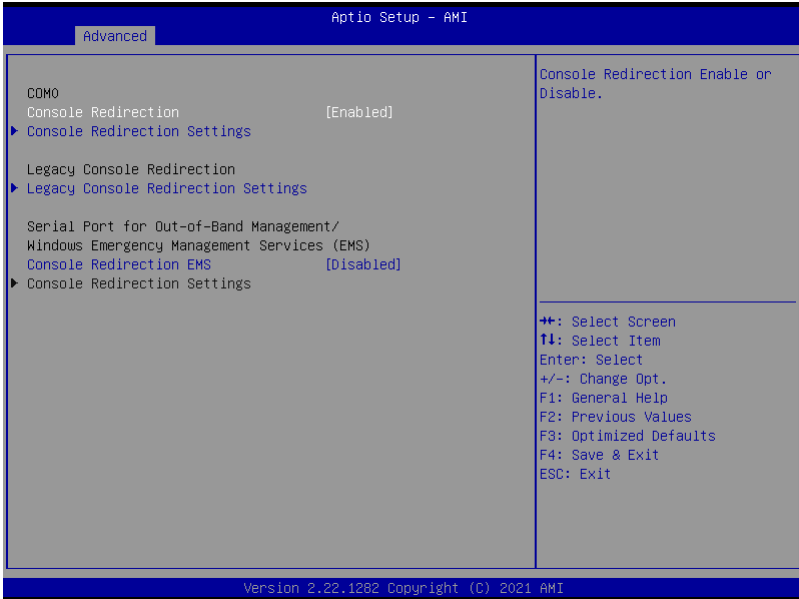
3.4.4 Advanced: PCI Subsystem Settings



Options summary:

Above 4G Decoding	Disabled	
	Enabled	Optimal Default, Failsafe Default
Enables or Disables 64bit capable Devices to be Decoded in Above 4G Address Space (Only if System Supports 64 bit PCI Decoding).		

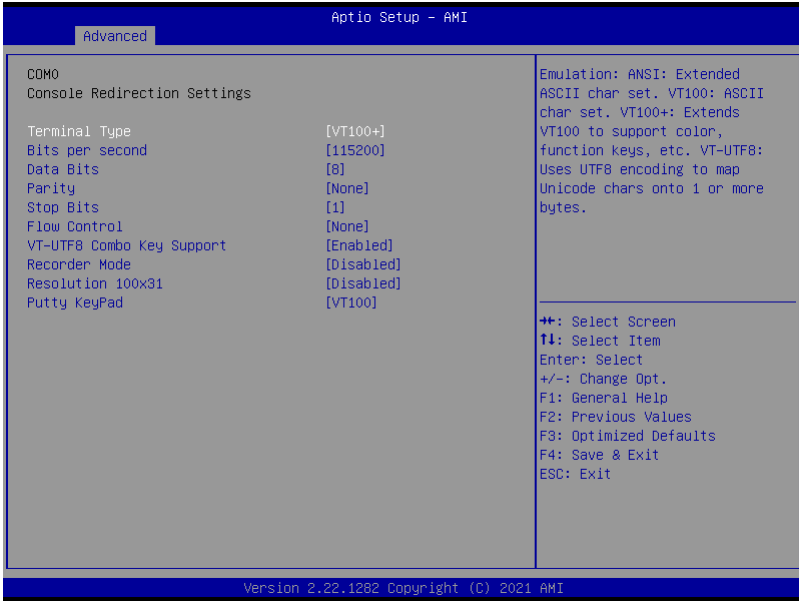
3.4.5 Advanced: Serial Port Console Configuration



Options summary:

Console	Enabled	Optimal Default, Failsafe Default
Redirection	Disabled	
Console Redirection Enable or Disable.		
Console Redirection Settings		
The settings specify how the host computer and the remote computer (which the user is using) will exchange data.		
Both computers should have the same or compatible settings.		
Console	Enabled	Optimal Default, Failsafe Default
Redirection EMS	Disabled	
Console Redirection Enable or Disable.		

3.4.5.1 Serial Port Console Configuration: COM0 Console Redirection Settings



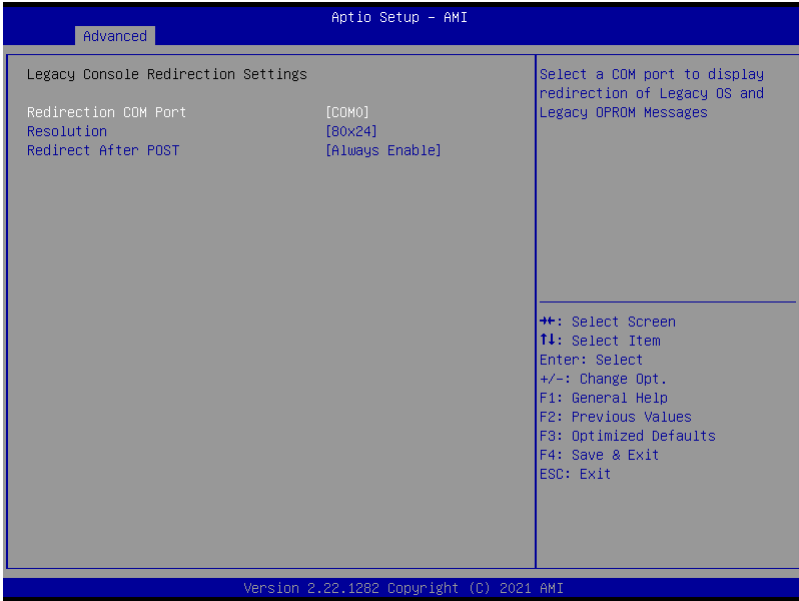
Options summary:

Terminal Type	VT100	
	VT100+	Optimal Default, Failsafe Default
	VT-UTF8	
	ANSI	
Emulation :		
ANSI : Extended ASCII char set.		
VT100 : ASCII char set.		
VT100+ : Extends VT100 to support color, function keys, etc.		
VT-UTF8 : Uses UTF8 encoding to map Unicode.		
Bits per second	9600	

	19200	
	38400	
	57600	
	115200	Optimal Default, Failsafe Default
<p>Selects serial port transmission speed. The speed must be matched on the other side. Long or noisy lines may require lower speeds.</p>		
Data bit	7	
	8	Optimal Default, Failsafe Default
Data Bits		
Parity	None	Optimal Default, Failsafe Default
	Even	
	Odd	
	Mark	
	Space	
<p>A Parity bit can be sent with the data bits to detect some transmission errors.</p> <p>Even : parity bit is 0 if the num of 1's in the data bits is even.</p> <p>Odd : parity bit is 0 if the num of 1's in the data bits is odd.</p> <p>Mark: parity bit is always 1.</p> <p>Space: Parity bit is always 0</p> <p>Mark and Space Parity do not allow for error detection. They can be used as an additional data bit.</p>		
Stop Bits	1	Optimal Default, Failsafe Default
	2	
<p>Stop bits indicate the end of a serial data packet. (A start bit indicates the beginning). The standard setting is 1 stop bit. Communication with slow devices may.</p>		
Flow control	None	Optimal Default, Failsafe Default
	Hardware RTS/CTS	

Flow control can prevent data loss from buffer overflow. When sending data, if the receiving buffers are full, a 'stop' signal can be sent to stop the data flow. Once the buffers are empty, a 'start' signal can be sent to re-start the flow. Hardware flow control uses two wires to send start/stop signals.		
VT-UTF8 Combo	Enabled	Optimal Default, Failsafe Default
Key Support	Disabled	
Enable VT-UTF8 Combination Key Support for ANSI/VT100 terminals.		
Recorder Mode	Disabled	Optimal Default, Failsafe Default
	Enabled	
With this mode enabled only text will be sent. This is to capture Terminal data.		
Resolution 100x31	Disabled	Optimal Default, Failsafe Default
	Enabled	
Enables or disables extended terminal resolution.		
Putty KeyPad	VT100	Optimal Default, Failsafe Default
	LINUX	
	XTERMR6	
	SCO	
	ESCN	
	VT400	
Select FunctionKey and KeyPad on Putty.		

3.4.5.2 Serial Port Console Configuration: Legacy Console Redirection Settings

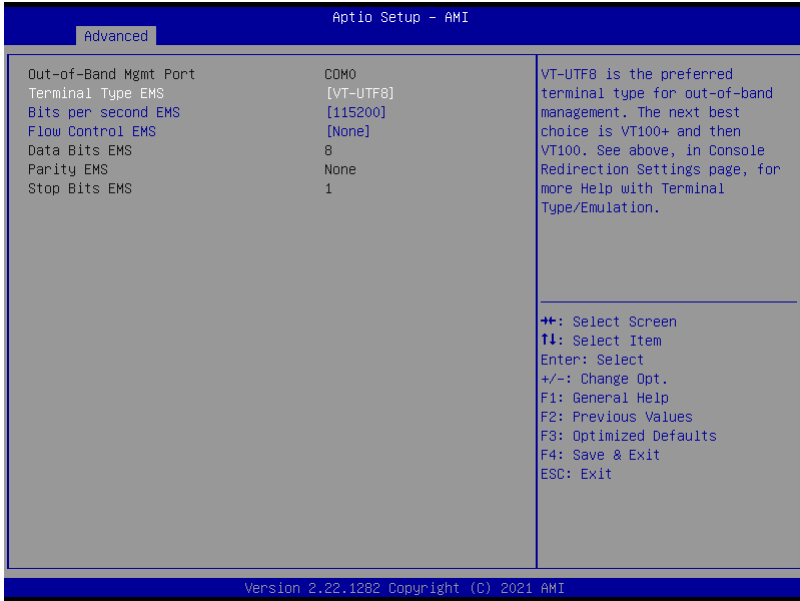


Options summary:

Redirection COM Port	COM0	Optimal Default, Failsafe Default
Select a COM port to display redirection of Legacy OS and Legacy OPRM Messages		
Resolution	80x24	Optimal Default, Failsafe Default
	80x25	
On Legacy OS, the Number of Rows and Columns supported redirection		
Redirect After POST	Always Enable	Optimal Default, Failsafe Default
	BootLoader	

When Bootloader is selected, then Legacy Console Redirection is disabled before booting to legacy OS. When Always Enable is selected, then Legacy Console Redirection is enabled for legacy OS. Default setting for this option is set to Always Enable.

3.4.5.3 Serial Port Console Configuration: Console Redirection EMS Settings

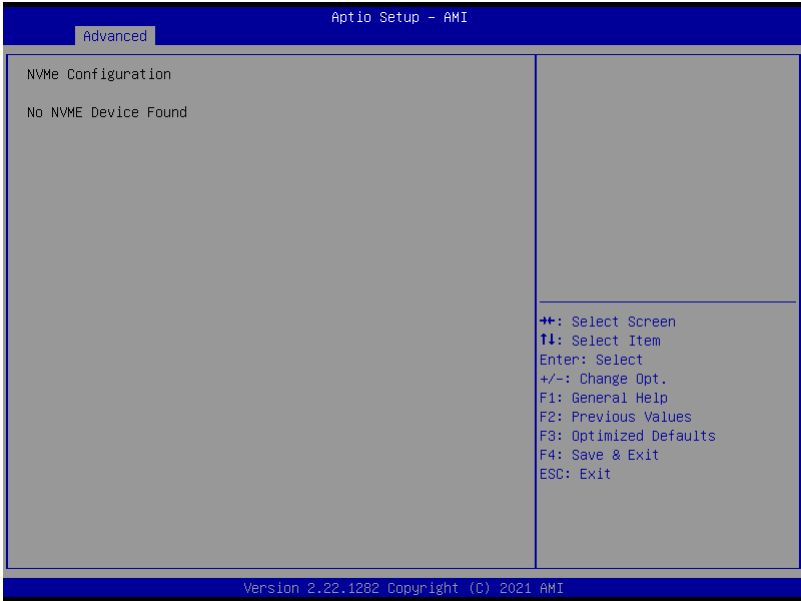


Options summary:

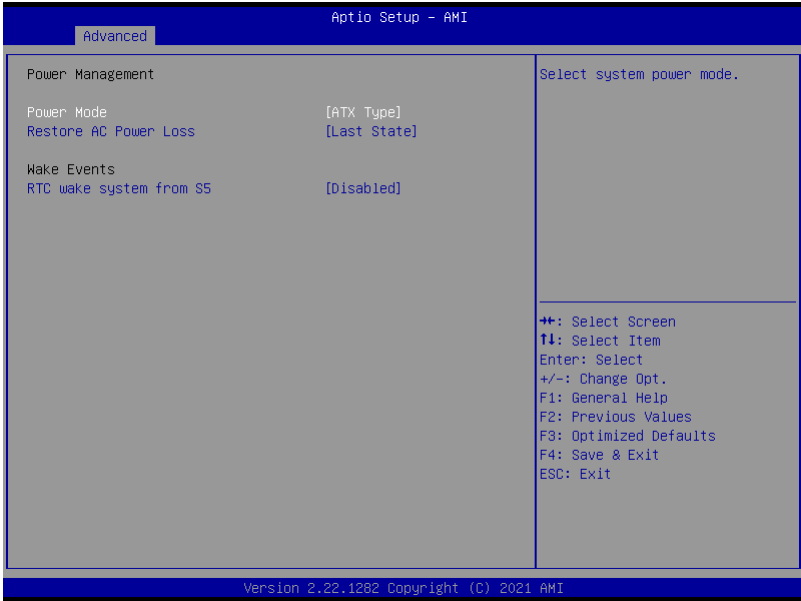
Terminal Type EMS	VT100	
	VT100+	
	VT-UTF8	Optimal Default, Failsafe Default
	ANSI	
VT-UTF8 is the preferred terminal type for out-of-band management. The next best choice is VT100+ and then VT100. See above, in Console Redirection Settings page, for more Help with Terminal Type/Emulation.		
Bits per second EMS	9600	
	19200	
	57600	

	115200	Optimal Default, Failsafe Default
<p>Selects serial port transmission speed. The speed must be matched on the other side. Long or noisy lines may require lower speeds.</p>		
Flow Control EMS	None	Optimal Default, Failsafe Default
	Hardware RTS/CTS	
	Software Xon/Xoff	
<p>Flow control can prevent data loss from buffer overflow.</p> <p>When sending data, if the receiving buffers are full, a 'stop' signal can be sent to stop the data flow. Once the buffers are empty, a 'start' signal can be sent to re-start the flow. Hardware flow control uses two wires to send start/stop signals.</p>		
Data Bits EMS	8	Optimal Default, Failsafe Default
Data Bits		
Parity EMS	None	Optimal Default, Failsafe Default
<p>A parity bit can be sent with the data bits to detect some transmission errors.</p> <p>Even: parity bit is 0 if the num of 1's in the data bits is even.</p> <p>Odd: parity bit is 0 if num of 1's in the data bits is odd.</p> <p>Mark: parity bit is always 1.</p> <p>Space: Parity bit is always 0.</p> <p>Mark and Space Parity do not allow for error detection.</p> <p>They can be used as an additional data bit.</p>		
Stop Bits EMS	1	Optimal Default, Failsafe Default
<p>Stop bits indicate the end of a serial data packet. (A start bit indicates the beginning). The standard setting is 1 stop bit. Communication with slow devices may.</p>		

3.4.6 Advanced: NVMe Configuration



3.4.7 Advanced: Power Management



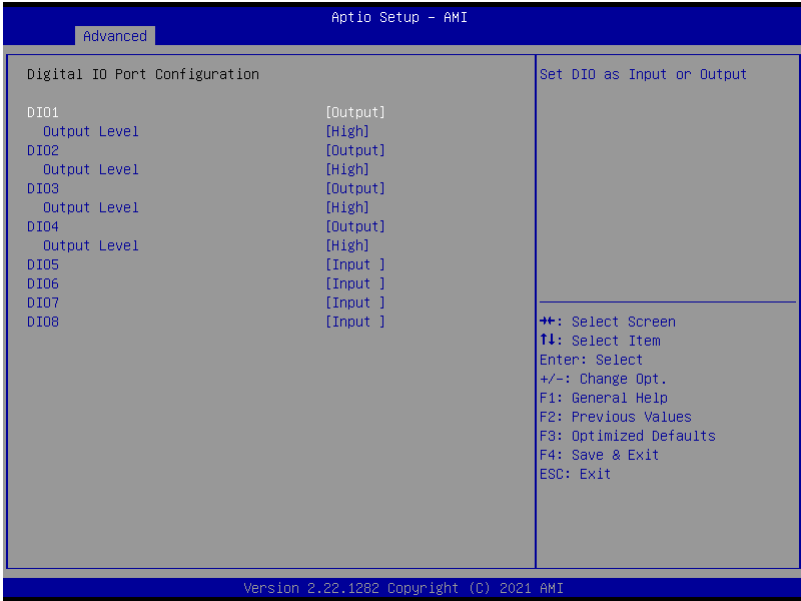
Options summary:

Power Mode	ATX Type	Optimal Default, Failsafe Default
	AT Type	
Select power supply mode.		
Restore AC Power Loss	Last State	Optimal Default, Failsafe Default
	Always On	
	Always Off	
Select power state when power is re-applied after a power failure.		
RTC wake system from S5	Disabled	Optimal Default, Failsafe Default
	Fixed Time	
	Bypass	

Fixed Time : System will wake on the hr :: min :: sec specified

Bypass: BIOS will not control RTC wake function during system shutdown

3.4.8 Advanced: Digital IO Port Configuration

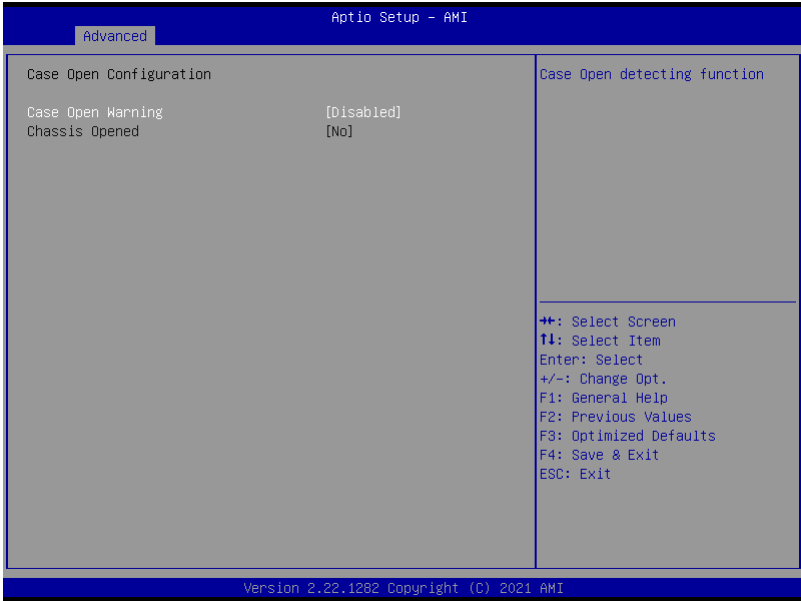


Options summary:

DIO Port1~4	Output	Optimal Default, Failsafe Default
	Input	
Set DIO as Input or Output		
DIO Port1~4 Output Level	High	Optimal Default, Failsafe Default
	Low	
Set output level when DIO pin is output		
DIO Port5~8	Output	Optimal Default, Failsafe Default
	Input	
Set DIO as Input or Output		
DIO Port5~8 Output Level	High	Optimal Default, Failsafe Default
	Low	

Set output level when DIO pin is output

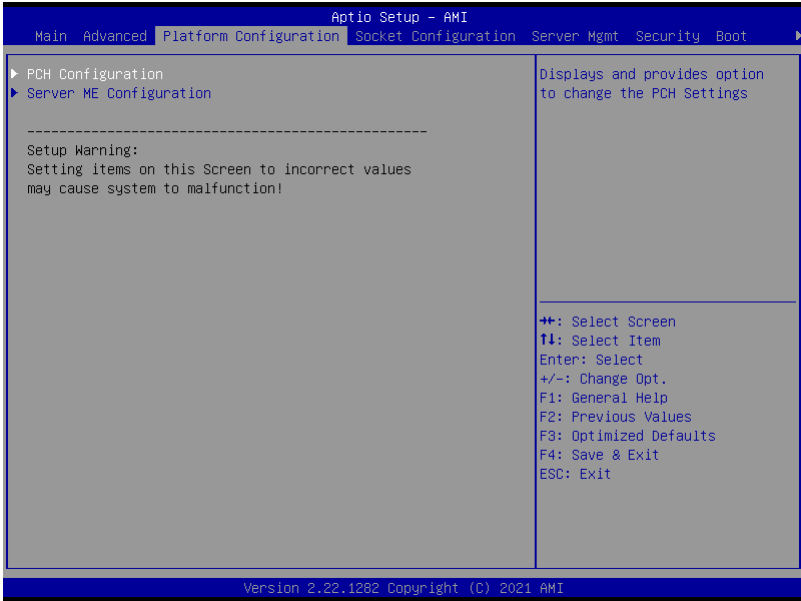
3.4.9 Advanced: Case Open Configuration



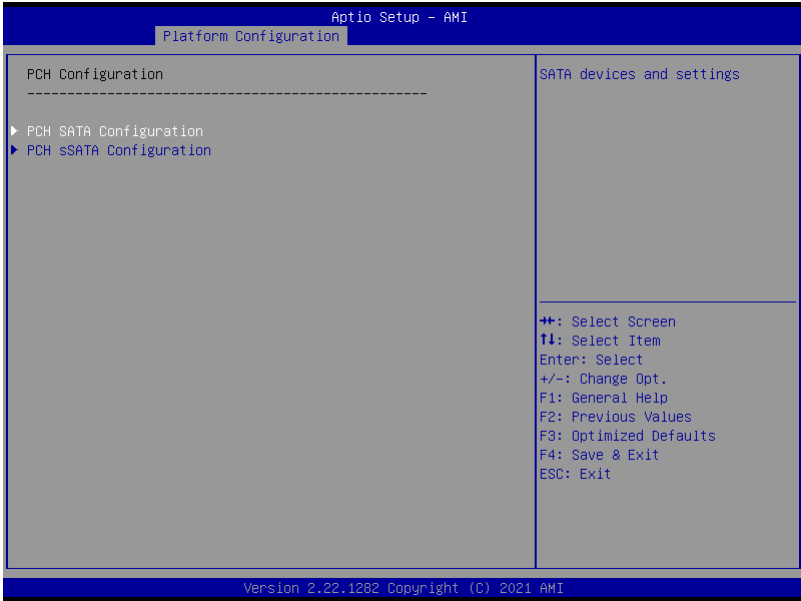
Options summary:

Case Open	Disabled	Optimal Default, Failsafe Default
Warning	Enabled	
	Clear	
Case Open detecting function		

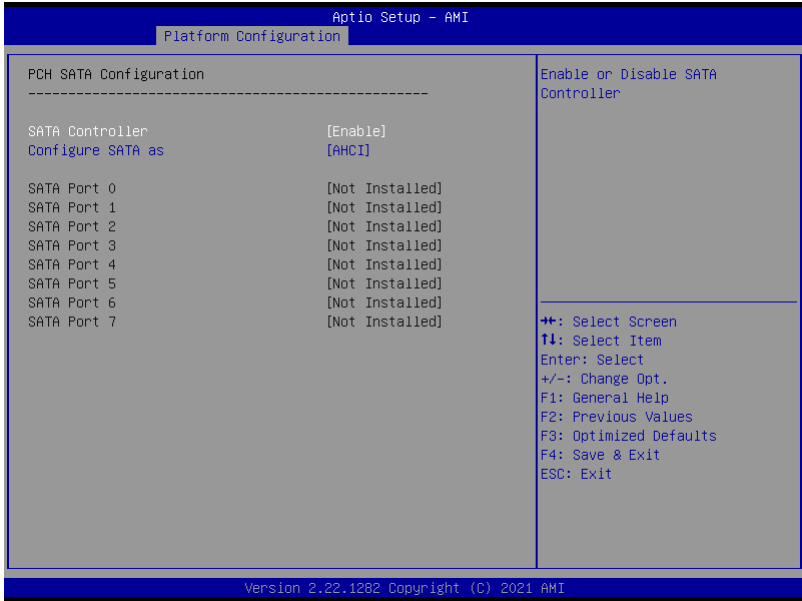
3.5 Setup submenu: Platform Configuration



3.5.1 Platform Configuration: PCH Configuration



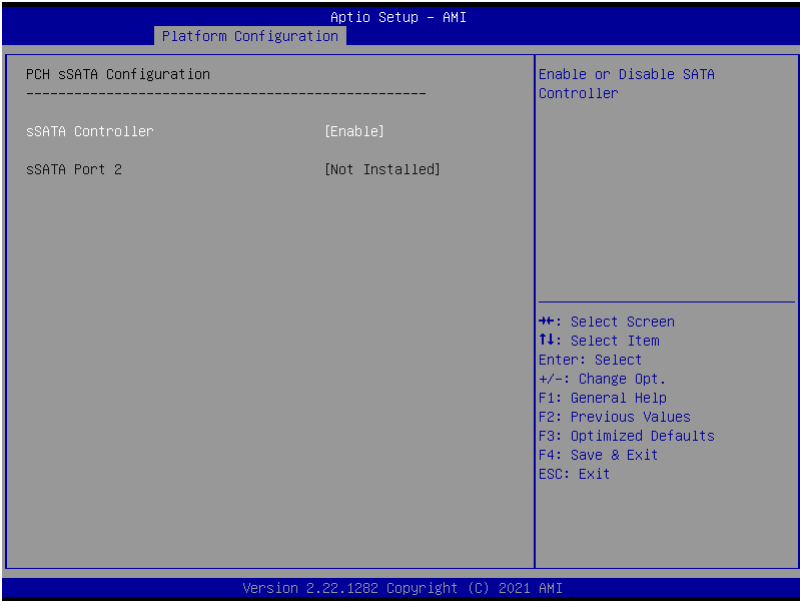
3.5.11 PCH Configuration: PCH SATA Configuration



Options summary:

SATA Controller	Disabled	Optimal Default, Failsafe Default
	Enabled	
Enable or Disable SATA Controller		
Configure SATA as	AHCI	Optimal Default, Failsafe Default
	RAID	
Identify the SATA port is connected to Solid State Drive or Hard Disk Drive		

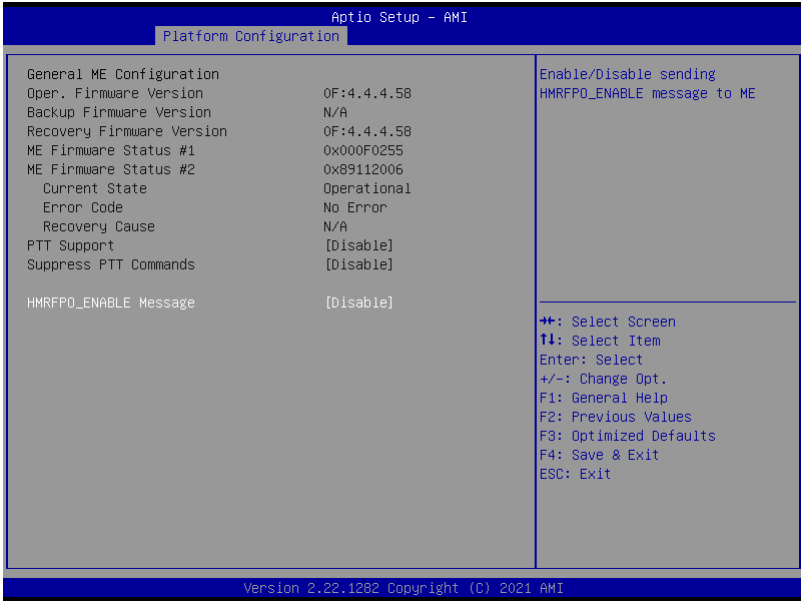
3.5.1.2 PCH Configuration: PCH sSATA Configuration



Options summary:

sSATA Controller	Disabled	Optimal Default, Failsafe Default
	Enabled	
Enable or Disable SATA Controller		

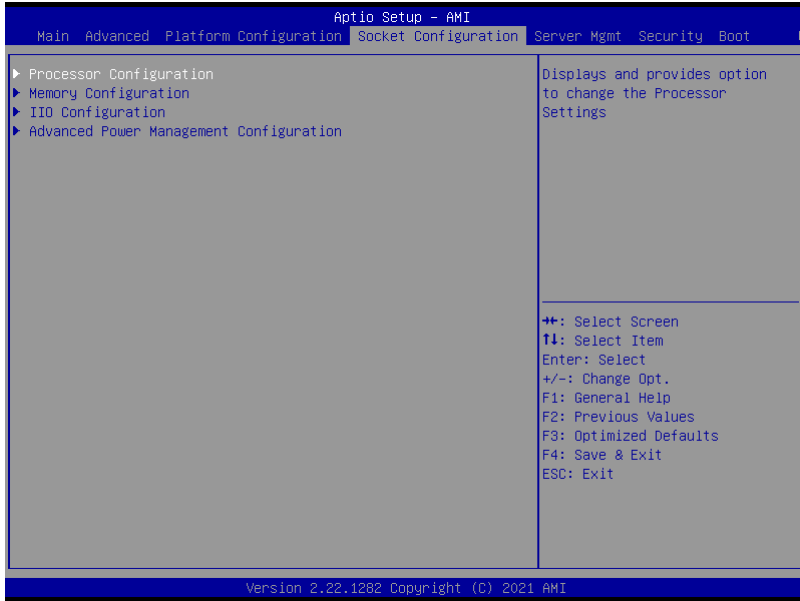
3.5.2 Platform Configuration: Server ME Configuration



Options summary:

HMRFFPO_ENABLE	Disable	Optimal Default, Failsafe Default
Message	Enable	
Enable/Disable sending HMRFFPO_ENABLE Message to ME		

3.6 Setup submenu: Socket Configuration



3.6.1 Socket Configuration: Processor Configuration

The screenshot shows the 'Aptio Setup - AMI' BIOS interface with the 'Socket Configuration' menu selected. The main display area is divided into two columns. The left column lists processor configuration details for two sockets, and the right column shows the Hyper-Threading status and navigation instructions.

Processor Configuration		Socket Configuration	
Processor BSP Revision	606A6 - ICX D0		
Processor Socket	Socket 0	Socket 1	
Processor ID	000606A6*	N/A	
Processor Frequency	2.200GHz	N/A	
Processor Max Ratio	16H	N/A	
Processor Min Ratio	08H	N/A	
Microcode Revision	0D0002E0	N/A	
L1 Cache RAM(Per Core)	80KB	N/A	
L2 Cache RAM(Per Core)	1280KB	N/A	
L3 Cache RAM(Per Package)	49152KB	N/A	
Processor 0 Version	Intel(R) Xeon(R) Gold 6338N CPU @ 2.20GHz		
Hyper-Threading [ALL]	[Enable]		

Enables Hyper Threading (Software Method to Enable/Disable Logical Processor threads.)

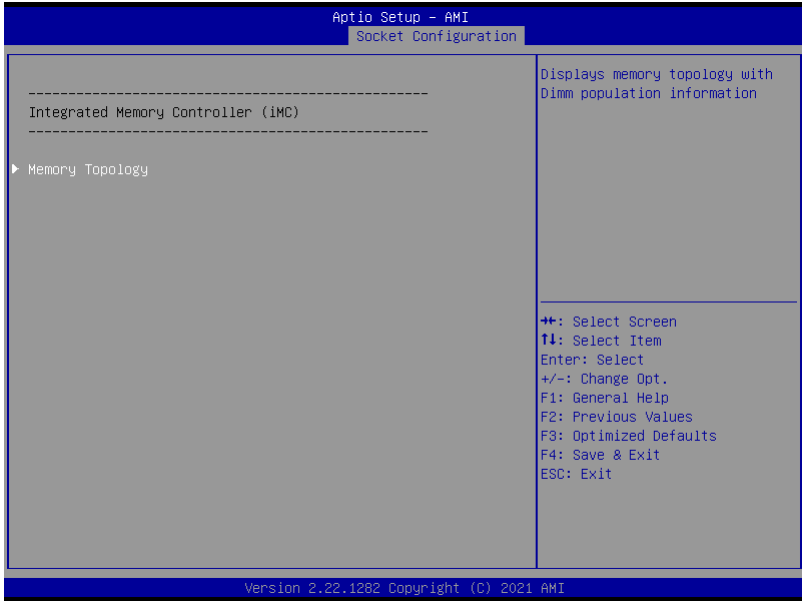
++: Select Screen
 F1: Select Item
 Enter: Select
 +/-: Change Opt.
 F1: General Help
 F2: Previous Values
 F3: Optimized Defaults
 F4: Save & Exit
 ESC: Exit

Version 2.22.1282 Copyright (C) 2021 AMI

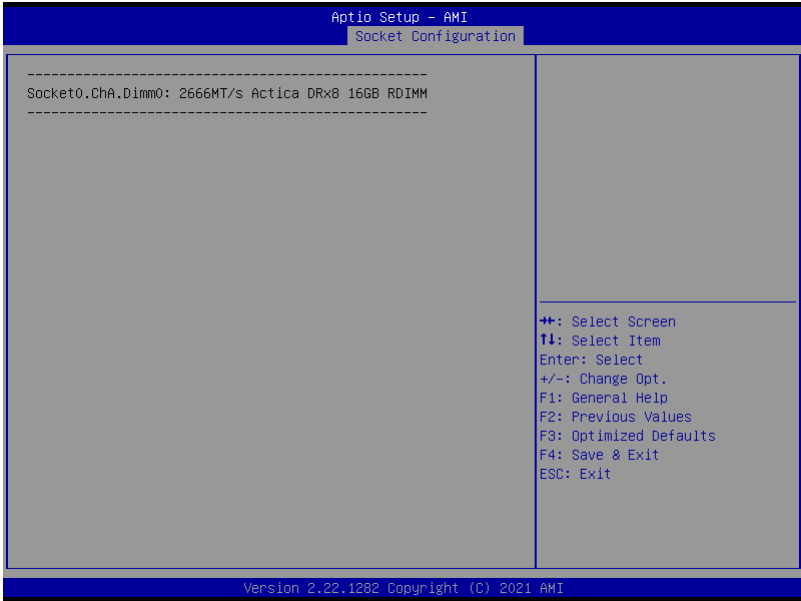
Options summary:

Hyper-Threading	Disable	Optimal Default, Failsafe Default
[ALL]	Enable	
Enables Hyper Threading (Software Method to Enable/Disable Logical Processor threads.)		

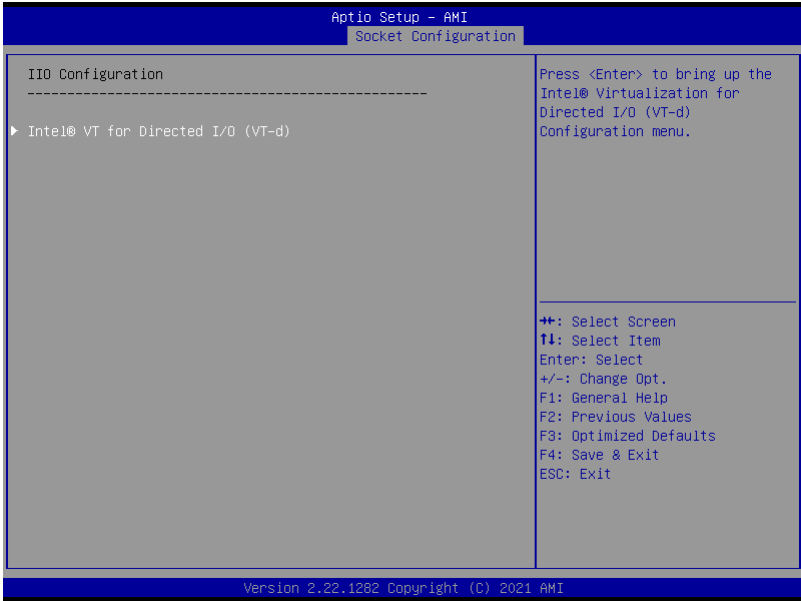
3.6.2 Socket Configuration: Memory Configuration



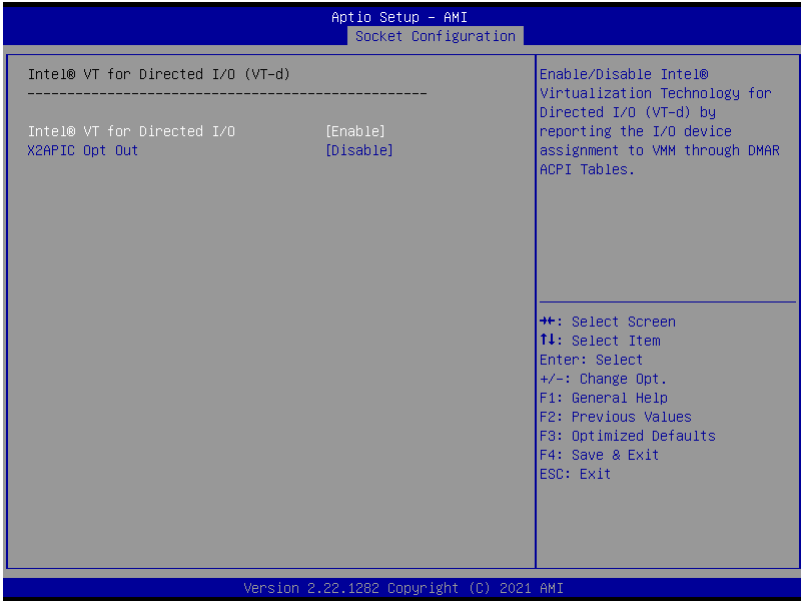
3.6.2.1 Memory Configuration: Memory Topology



3.6.3 Socket Configuration: IIO Configuration



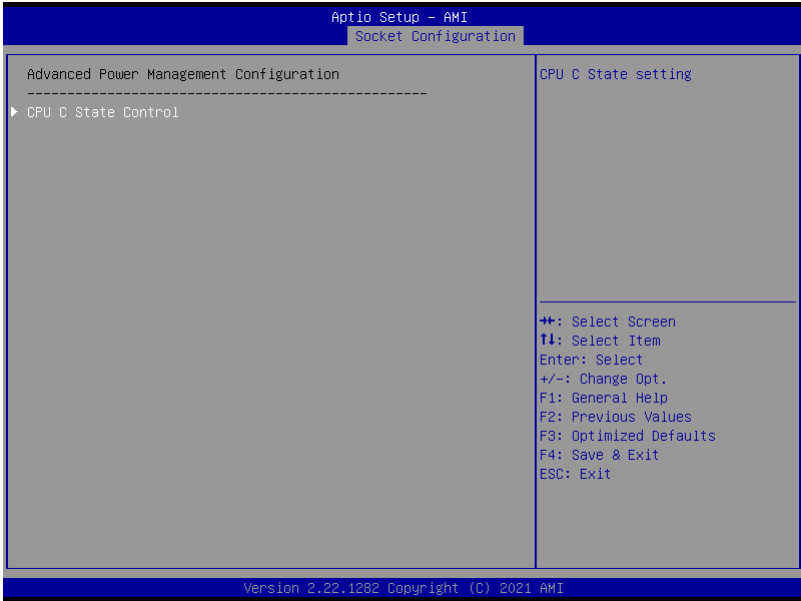
3.6.4 Socket Configuration: Intel® VT for Directed I/O (VT-d)



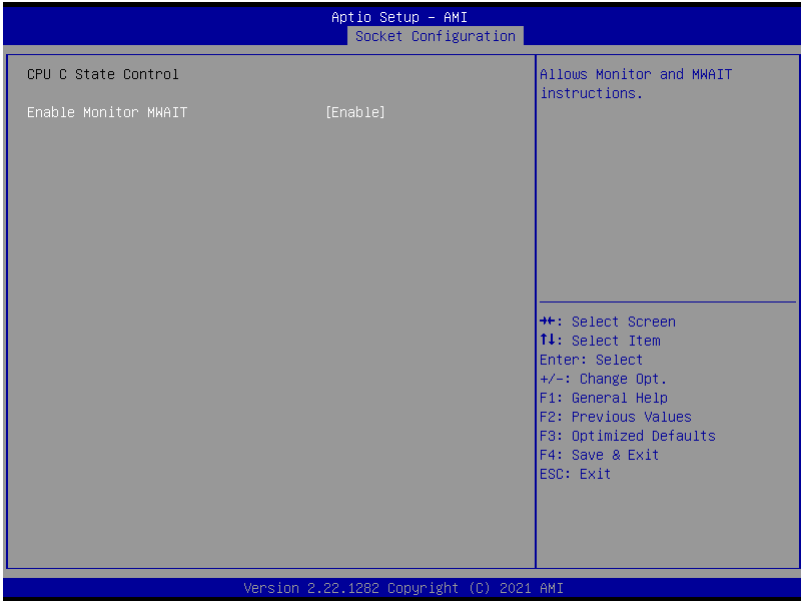
Options summary:

Intel® VT for Directed I/O	Enable	Optimal Default, Failsafe Default
	Disable	
Enables Hyper Threading (Software Method to Enable/Disable Logical Processor threads).		
X2APIC Opt Out	Enable	Optimal Default, Failsafe Default
	Disable	
Enable/Disable X2APIC_OPT_OUT bit		

3.6.5 Socket Configuration: Advanced Power Management Configuration



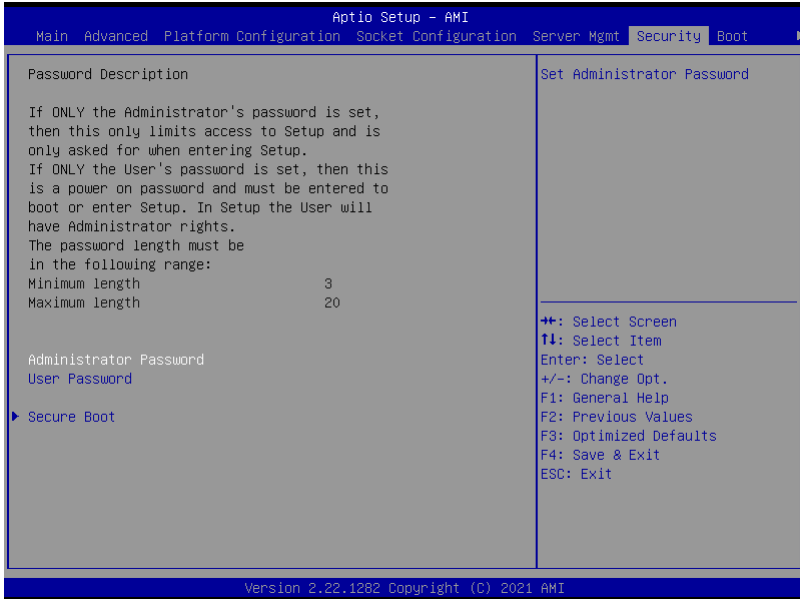
3.6.5.1 Advanced Power Management Configuration: CPU C State Control



Options summary:

Enable Monitor	Disable	Optimal Default, Failsafe Default
MWAIT	Enable	
Allows Monitor and MWAIT instructions.		

3.7 Setup submenu: Security



Change User/Administrator Password

If an Administrator Password is set, it will be required during boot up, or when the user enters the Setup utility. Please Note that a User Password does not provide access to many of the features in the Setup utility.

Select the password you wish to set, press Enter to open a dialog box to enter your password (you can enter no more than six letters or numbers). Press Enter to confirm your entry, after which you will be prompted to retype your password for a final confirmation. Press Enter again after you have retyped it correctly.

Removing the Password

Highlight this item and type in the current password. At the next dialog box press Enter to disable password protection.

3.7.1 Security: Secure Boot

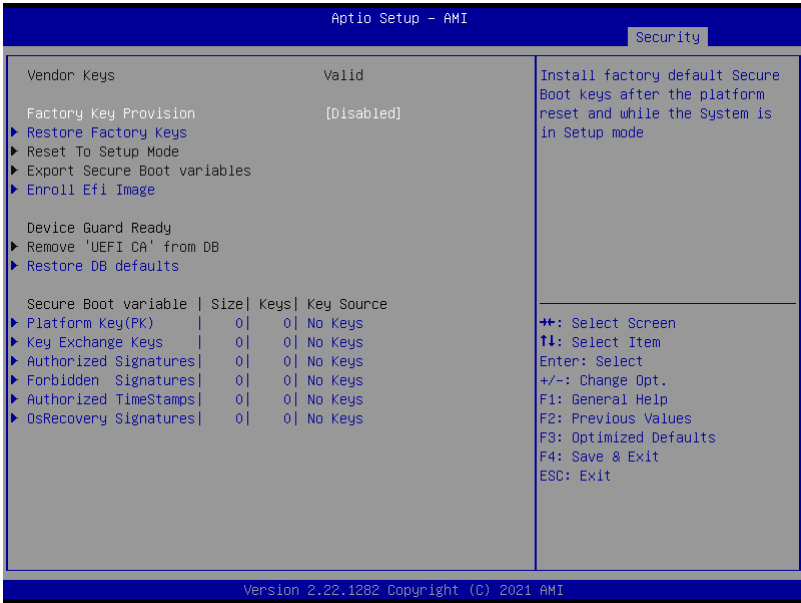


Options summary:

Secure Boot	Disabled	Optimal Default, Failsafe Default
	Enabled	
Secure Boot feature is Active if Secure Boot is Enabled, Platform Key(PLK) is enrolled and the System is in User mode. The mode change requires platform reset		
Secure Boot Mode	Standard	Optimal Default, Failsafe Default
	Custom	
Secure Boot mode options: Standard or Custom. In Custom mode, Secure Boot Policy variables can be configured by a physically present user without full authentication		
Restore Factory Keys	Force System to User Mode. Install factory default Secure Boot key databases.	

Reset To Setup Mode	Delete all Secure Boot key databases from NVRAM
---------------------	---

3.7.1.1 Secure Boot: Key Management



Options summary:

Factory Key	Disabled	Optimal Default, Failsafe Default
Provision	Enabled	
Install factory default Secure Boot keys after the platform reset and while the System is in Setup mode		
Restore Factory Keys	Force System to User Mode. Install factory default Secure Boot key databases.	
Reset To Setup Mode	Delete all Secure Boot key databases from NVRAM	
Export Secure Boot variables	Copy NVRAM content of Secure Boot variables to files in a root folder on a file system device	

Enroll Efi Image	Allow the image to run in Secure Boot mode. Enroll SHA256 Hash certificate of a PE image into Authorized Signature Database (db)
Remove 'UEFI CA' from DB	Device Guard ready system must not list 'Microsoft UEFI CA' Certificate in Authorized Signature database (db)
Restore DB defaults	Restore DB variable to factory defaults

Secure Boot Variables

Enroll Factory Defaults or load certificates from a file:

1. Public Key Certificate in:

- a) EFI_SIGNATURE_LIST
- b) EFI_CERT_X509 (DER encoded)
- c) EFI_CERT_RSA2048 (bin)
- d) EFI_CERT_SHAXXX

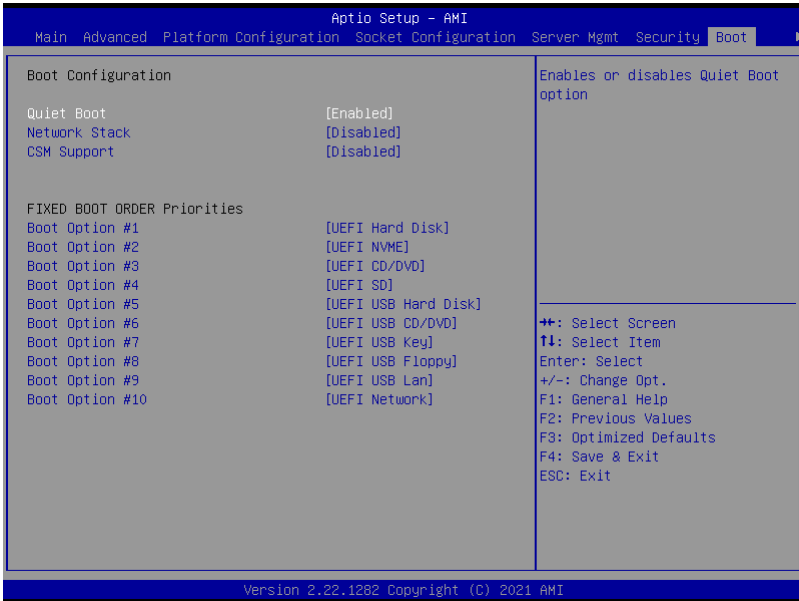
2. Authenticated UEFI Variable

3. EFI PE/COFF Image(SHA256)

Key Source:

Default, External, Mixed

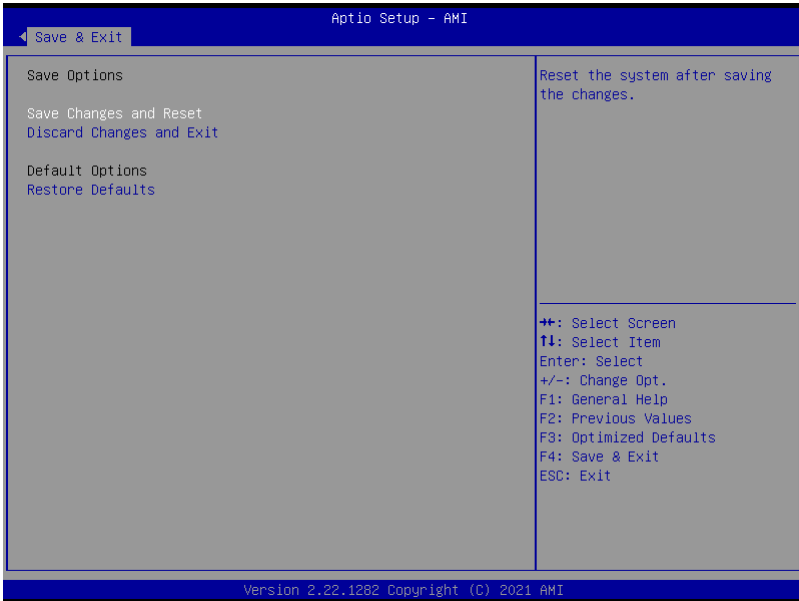
3.8 Setup submenu: Boot



Options summary:

Quiet Boot	Disabled	Optimal Default, Failsafe Default
	Enabled	
Enable or Disable Quiet Boot option.		
Network Stack	Disabled	Optimal Default, Failsafe Default
	Enabled	
Enable/Disable UEFI Network Stack.		
CSM Support	Disabled	Optimal Default, Failsafe Default
	Enabled	
Enable/Disable CSM Support.		
FIXED BOOT ORDER Priorities	Sets the system boot order	

3.9 Setup submenu: Save & Exit



Options summary:

Save Changes and Reset	Reset the system after saving the changes.
Discard Changes and Exit	Exit system setup without saving any changes.
Restore Defaults	Restore/Load Default values for all the setup options.

Chapter 4

Driver Installation

4.1 Driver Download/Installation

Drivers for the ARES-WHI0 can be downloaded from the product page on the AAEON website by following this link:

<https://www.aaeon.com/en/p/intel-ice-lake-xeon-server-board-ares-who>

Download the driver(s) you need, extract them to their respective folders and follow the steps below to install them.

Step 1 – Install Chipset Drivers

1. Open the **Chipset-10.1.18736.8270-Public-Server-MUP** folder
2. Run the **SetupChipset.exe** in the folder
3. Follow the instructions
4. Drivers will be installed automatically

Step 2 – Install Graphics Drivers

1. Open the **SM750 WDDM2.0 v10.00.18.00-1119-sign(MS)-60028** folder
2. Run the **setup.exe** file in the folder
3. Follow the instructions
4. Drivers will be installed automatically

Step 3 – Install Network Driver

1. Open the **Intel LAN 26.6** folder, then open the **Wired_driver_26.6_x64** subfolder
2. Run the **Wired_driver_26.6_x64.exe** file in the subfolder
3. Follow the instructions
4. Drivers will be installed automatically

Step 4 – Install Audio Driver

1. Open the **Audio Driver V8978** folder
2. Run the **Setup.exe** file in the folder
3. Follow the instructions
4. Drivers will be installed automatically